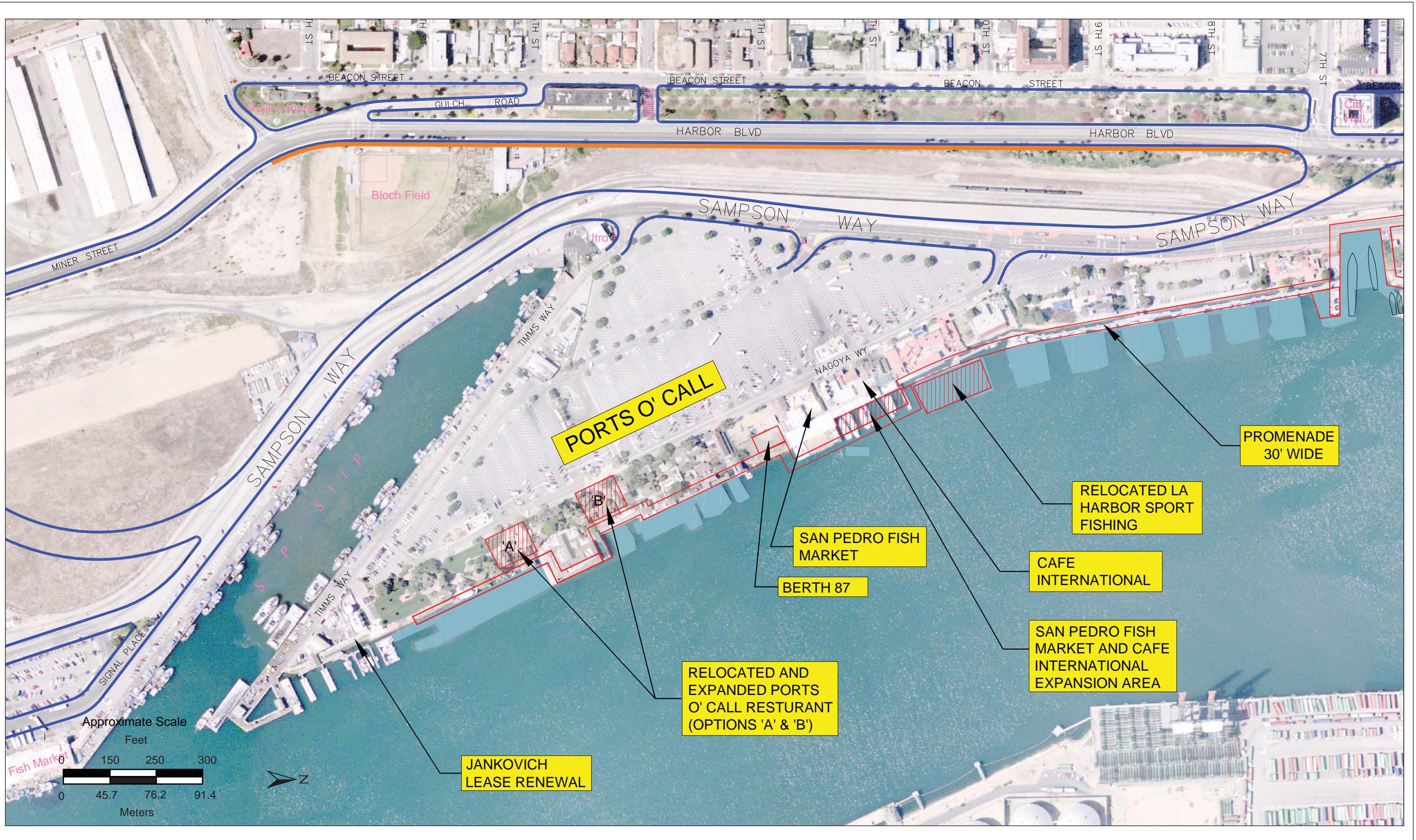


G:\SOCAL_TEAM\1.2_PROJECTS\POLA\105472.05_BRIDGE_TO_BREAKWATER\106_GRAPHICS\PORTS_REDEVELOPMENT.AI AC (12-14-06)



SOURCE: Port of Los Angeles, 2002

Figure 8
Ports O'Call Redevelopment
San Pedro Waterfront Project