

THE PORT
OF LOS ANGELES **LA**

America's Port

Public Access Investment Plan

September 23, 2021 Board of Harbor Commissioners



BACKGROUND



The PAIP provides a **transparent, sustainable, and predictable** 10-year investment strategy for public access projects.

- **Approved in February 2015 along with a first round of projects. Plan runs through 2025.**
- **Provides \$ 400 M + for new projects and operations/maintenance**
 - **10% of Operating Income allocated to new projects.**
- **Second round of project prioritization process began in 2019 and was concluded in March 2020 prior to onset of pandemic.**

BACKGROUND



3/2019

3/2020

6/2020

6/2021



Port initiates process for stakeholder input on funding for a second round of projects.

Selection of new PAIP projects put on hold due to economic uncertainty stemming from COVID 19.

Reassessment of PAIP budget based upon effects of pandemic and project cost increase left limited funds for future projects.

California loosens most COVID 19 restrictions and significantly reopens the state.

ESTIMATED ALLOCATION TOTALS*

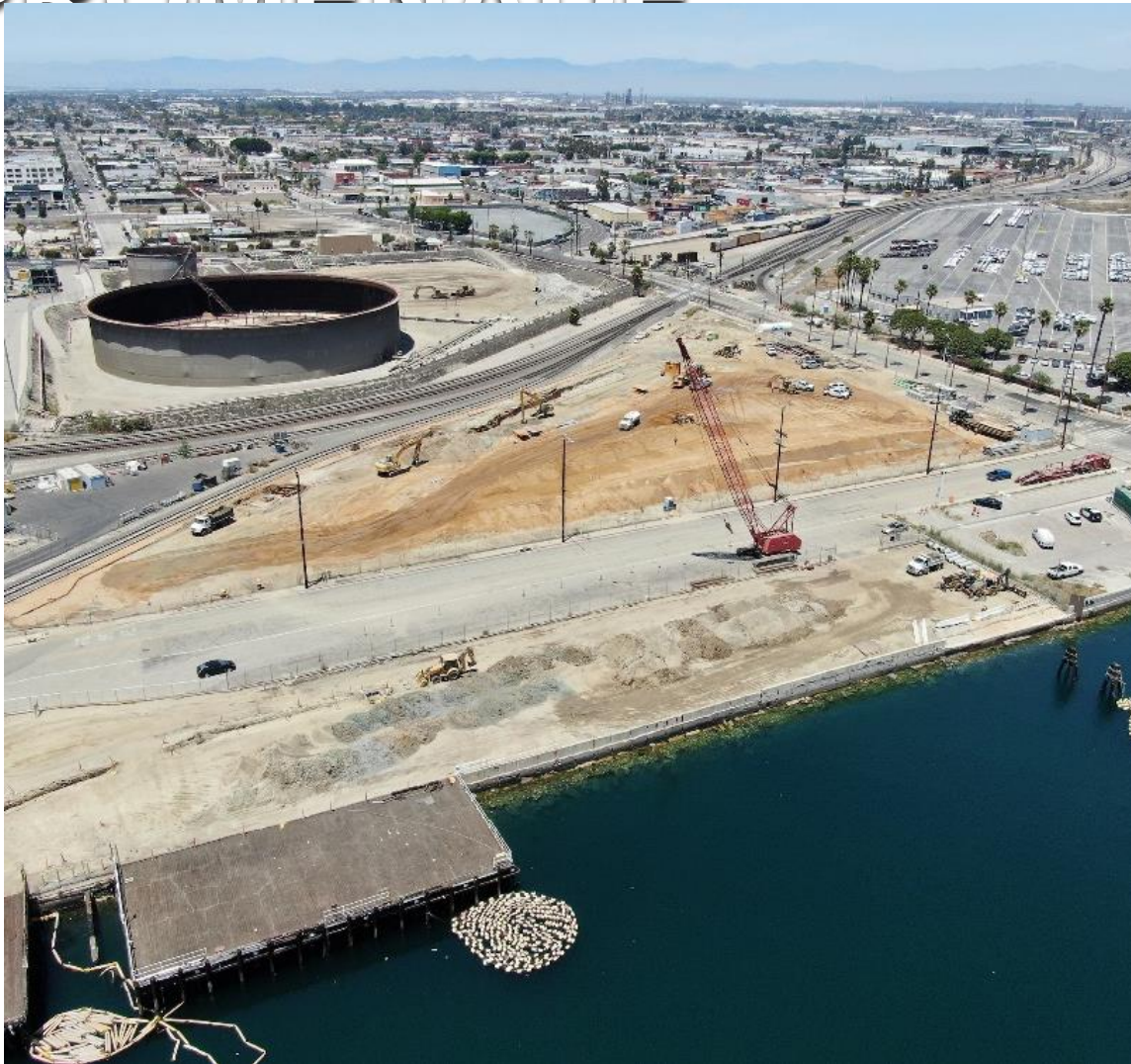


PAIP allocation for waterfront projects has increased from its original \$200 million estimate.

\$ 138.4 M	Actual allocations for Years 1 to 6
+ <u>\$ 95.3 M</u>	Estimated allocations for Years 7 to 10
\$ 233.7 M	Projected Total

<u>Projects</u>	<u>Previous Budget</u>	<u>Current Budget</u>	<u>Status</u>
Harbor Blvd & 7 th Street Intersection	\$15.6 M	\$15.3 M	Complete
West Harbor Promenade and Town Square	\$48.9 M	\$58.2 M	Construction complete September 2021
Harbor Blvd. from Miner St. to SP Slip	\$6.0 M	\$8.9 M	Construction complete July 2021
West Harbor Promenade Phase II	N/A	\$16.5 M	Construction to start January 2023
Total San Pedro	\$70.5 M	\$98.9 M	
Wilmington Waterfront Promenade	\$54.3 M	\$71.1 M	Construction complete Spring 2023
WYSAC Building	\$3.1 M	\$3.1 M	Design
Avalon Promenade & Gateway Phase 1	\$25.3 M	\$23.8 M	Construction to start Summer 2022
Avalon Promenade & Gateway Phase 2	N/A	\$33.2 M	Design
Total Wilmington	\$82.7 M	\$131.2 M	
Total PAIP Projects	\$153.2 M	\$230.1 M	

WILMINGTON WATERFRONT PROMENADE



SAN PEDRO WATERFRONT TOWN SQUARE



NEW PROJECTS



<u>Project</u>	<u>Cost Range</u>	<u>Note</u>
San Pedro Waterfront Connectivity Plan	\$500K	Subject to RFP Bids
Harbor Boulevard Parkway Improvements (HACLA)	\$1.4M to \$1.6M	
Cabrillo Marine Aquarium (Life Support System)	\$900K	Subject to new Operating Agreement
Wilmington Youth Sailing Center	\$1.2 M	Subject to PDC
TOTAL (RANGE)	\$4.0M to \$4.2M	

LOOKING FORWARD



1. Monitor economy and PAIP allocation

2. PAIP construction projects

- West Harbor Promenade Phase 2
- Wilmington Waterfront Promenade
- Avalon Bridge and Gateway

3. Development opportunities

4. Continue Stakeholder Engagement

- Partner with stakeholders on San Pedro Waterfront Connectivity Plan