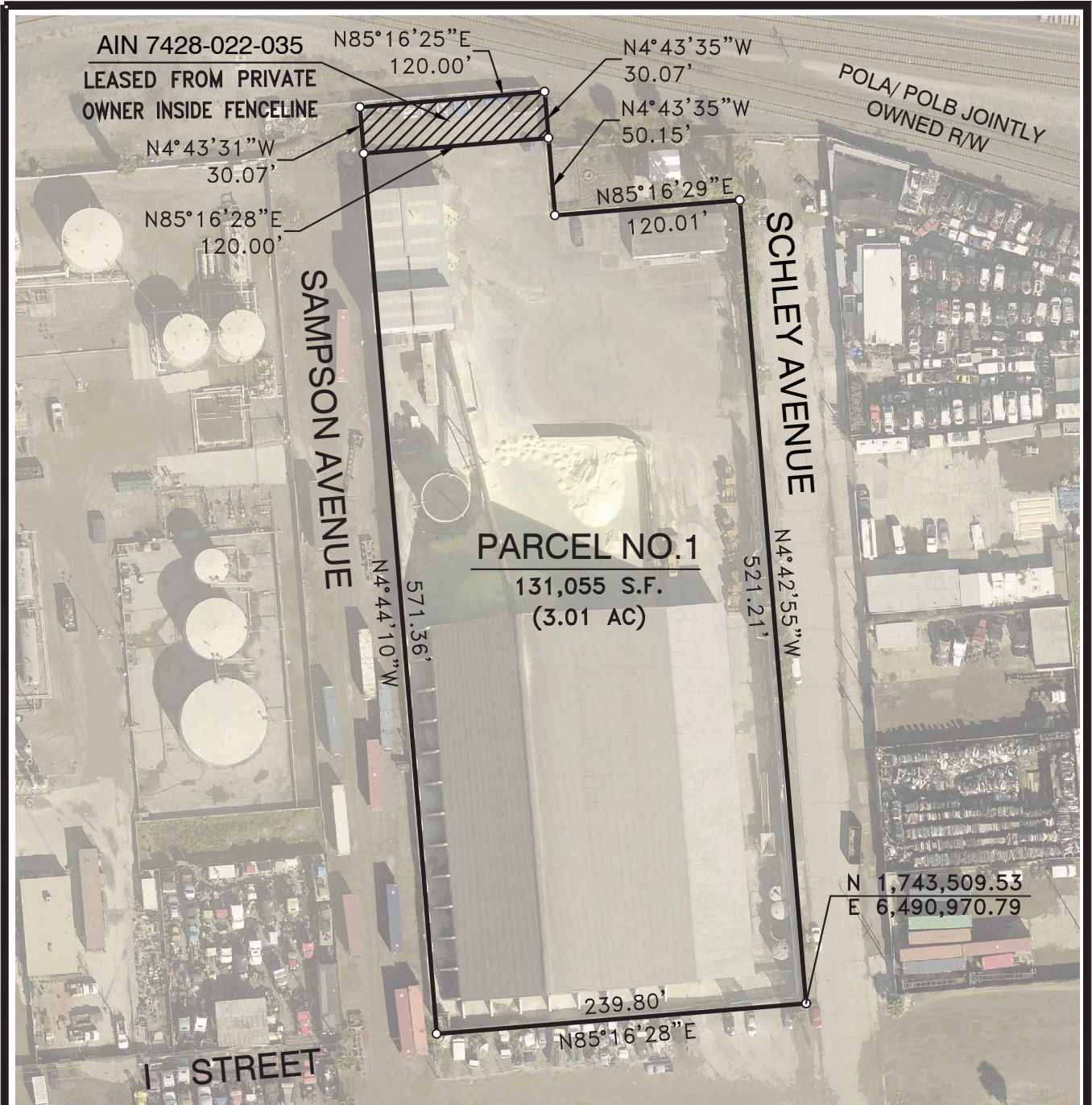
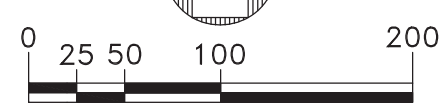


EXHIBIT A



NOTE:

- 1) No substructures are shown on this drawing. Accurate substructure information must be obtained from lessees and L.A.H.D. engineering records.
- 2) Horizontal Datum is based on the North American Datum of 1983 (NAD 83), California Coordinate System, Zone 5, Feet.
- 3) All distances shown on this drawing are grid distances. To obtain a reasonable representation of the ground distance, divide the distance herein by the average scale factor of 1.000076.



REV. NO. 1: 2/12 CHANGED AUTHORITY NUMBER *DRR ml*

REV. NO. 2: 2/24 REVISED PARCEL NO. 1, DELETED PARCEL NO. 2, & CHANGED AUTHORITY NO. *PH cus*

GRAPHIC SCALE

SCALE: 1"=100'		DATE:		RECOMMENDED FOR APPROVAL		PERMIT MAP - AUTHORITY NO. P964	
DRAWN: PSOMAS		5/03		CHIEF OF DESIGN		<b>H.J. BAKER &amp; BRO, LLC</b>	
CHECKED: PSOMAS		5/03		<i>[Signature]</i>			
DESIGNED: PSOMAS		ENGR/ARCH		ASSISTANT CHIEF HARBOR ENGINEER		APPROVED	
<i>[Signature]</i>		<i>[Signature]</i>		<i>[Signature]</i>		<p><b>THE PORT OF LOS ANGELES</b> ENGINEERING DIVISION P.O. BOX 151 SAN PEDRO, CA 90733-0151</p>	
<i>[Signature]</i>		<i>[Signature]</i>		<i>[Signature]</i>		DRAWING NUMBER <b>5-6018-1</b>	

POLAPRO5\_VER.1\_12/96  
5-6018-1