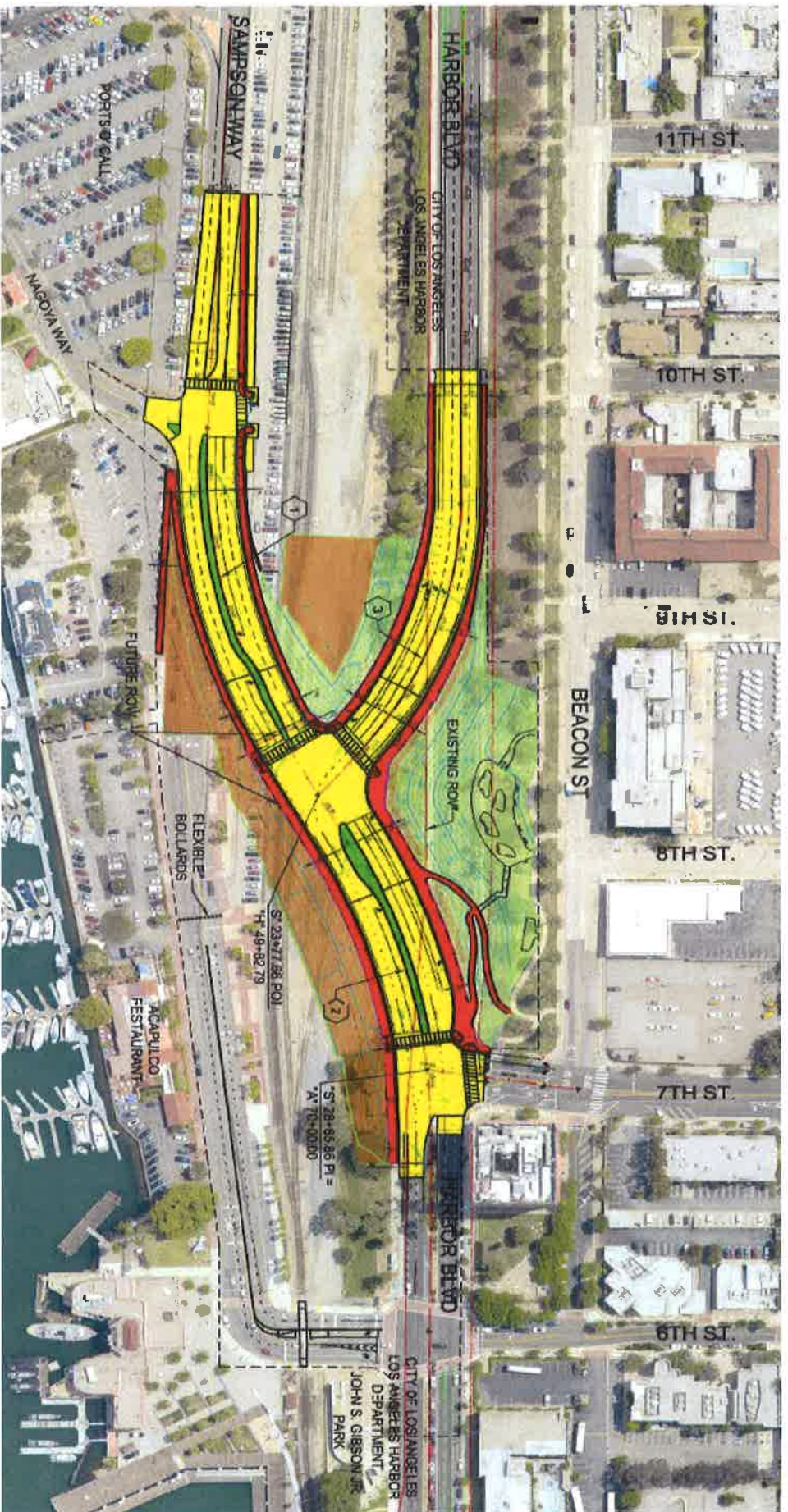


**Sampson Way Roadway Improvements –  
7<sup>th</sup> Street and Harbor Blvd. Intersection**



SCALE <b>AS SHOWN</b>	RECOMMENDED FOR APPROVAL	<b>TRANSMITTAL 3 - AERIAL SITE PLAN</b>	
DRAWN:	CHIEF OF DESIGN	<b>SAMPSON WAY ROADWAY IMPROVEMENTS – 7<sup>TH</sup> STREET AND HARBOR BLVD. INTERESTION</b>	
CHECKED:			
DESIGNED:			
	ASSISTANT HARBOR CHIEF ENGINEER	APPROVED	 <b>PORT OF LOS ANGELES</b> <small>CONSTRUCTION DIVISION P.O. BOX 151 SAN PEDRO, CA 90733-0151</small>
		CHIEF HARBOR ENGINEER	



# Sampson Way Roadway Improvements 7th Street and Harbor Boulevard Intersection

## Detailed Location Map