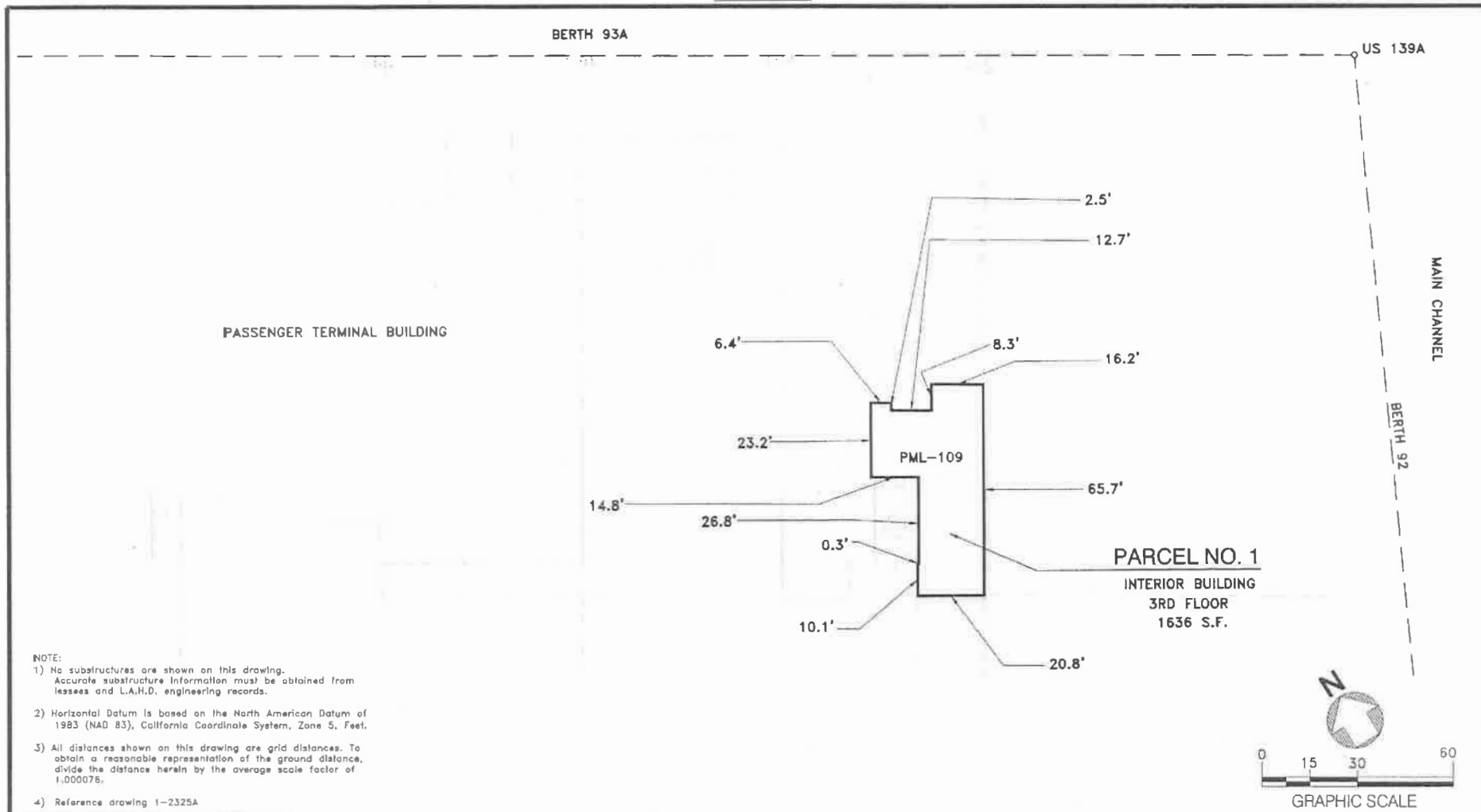



EXHIBIT A



- NOTE:
- 1) No substructures are shown on this drawing. Accurate substructure information must be obtained from lessees and L.A.H.D. engineering records.
 - 2) Horizontal Datum is based on the North American Datum of 1983 (NAD 83), California Coordinate System, Zone 5, Feet.
 - 3) All distances shown on this drawing are grid distances. To obtain a reasonable representation of the ground distance, divide the distance herein by the average scale factor of 1.000076.
 - 4) Reference drawing 1-2325A

NO.	DATE	DRAWN	REVISIONS -	CH'KD	APP'D	SCALE: 1"=30'	CHIEF OF DESIGN	PERMIT MAP - AUTHORITY NO. RP 17-11	
						DRAWN: J HO 06/17	<i>[Signature]</i>	ARCHDIOCESE OF LOS ANGELES EDUCATION AND WELFARE CORPORATION	
						CHECKED: D RAASCH 06/17	ASSISTANT CHIEF OF HARBOR ENGINEER	DRAWING NUMBER	
						DESIGNED: J HO 06/17	<i>[Signature]</i>	45680	
						ENGR/ARCH	<i>[Signature]</i> 6/13/17	 THE PORT OF LOS ANGELES ENGINEERING DIVISION 426 S. PALOUE VERDES STREET SAN PEDRO CA 90731-3309	
						<i>[Signature]</i>	CHIEF OF HARBOR ENGINEER		