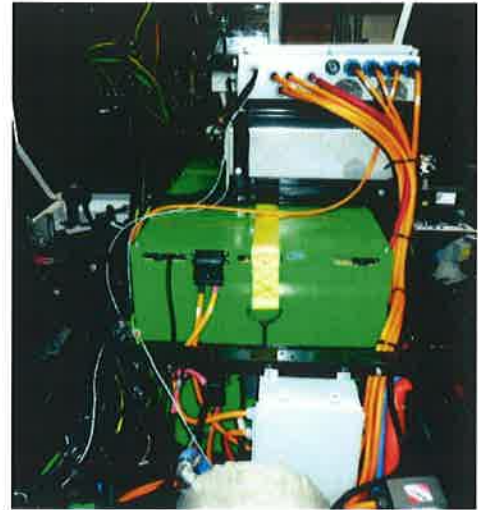




Electric Yard Tractor

Utilizing the ElecTruck™ Drive System



Vehicle Specifications:

- Features**
- Zero Emissions
 - Lower Lifecycle Cost than a Diesel Vehicle
 - Includes Proprietary Automated Manual Transmission
 - High Power Onboard Charger

Vehicle Curb Weight:	17,500 lbs
Towing Capacity:	62,500 lbs
Motor Power Rating:	150 kW
Energy Stored (Usable):	172 kWh
Recharge Time Using Onboard Charger:	2.5 Hours
Energy Consumption Towing 22,000 lbs:	1.69 kWh/Mile*
Loaded Range (Miles):	100+ miles
Loaded Range (Hours):	12+ Hours

For information contact:
 TransPower
info@transpowerusa.com
 (858) 248-4255

* Energy consumption data is from dynamometer testing conducted at UC Riverside using industry standard drive cycle. An Electric Yard Tractor is pictured above on the dyno.



13000 Danielson Street, Suite D Poway, California 92064