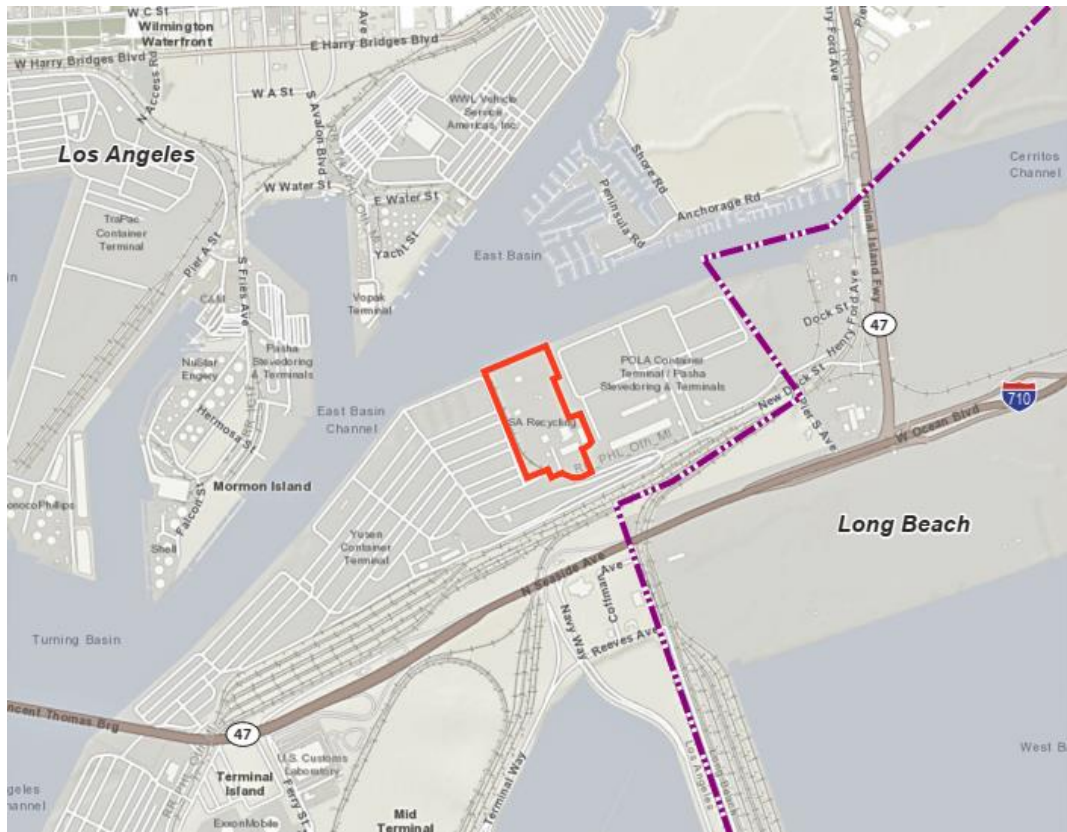


SA RECYCLING AMENDMENT TO PERMIT No. 750 PROJECT Draft Subsequent Environmental Impact Report

APP#190916-128
SCH#93071074



PREPARED FOR :

Environmental Management Division Los Angeles
Harbor Department
425 S. Palos Verdes Street
San Pedro, CA 90731



WITH ASSISTANCE FROM :

DUDEK

Table of Contents

Executive Summary	ES-1
ES.1 Introduction and Background	ES-1
ES.1.1 Background to the Subsequent Environmental Impact Report	ES-1
ES.1.2 Scope of the Draft SEIR	ES-2
ES.1.3 Purpose of the Draft SEIR	ES-3
ES.1.4 Uses and Scope of the SEIR.....	ES-3
ES.1.5 Purpose and Need	ES-4
ES.1.6 Project Objectives	ES-4
ES.2 Proposed Project.....	ES-4
ES.2.1 Project Location and Setting.....	ES-4
ES.2.2 Surrounding and Nearby Land Use.....	ES-5
ES.2.3 Project Description.....	ES-5
ES.3 Environmental Impacts.....	ES-6
ES.3.1 Impacts Not Considered in the SEIR.....	ES-11
ES.3.2 Impacts of the Proposed Project.....	ES-11
ES.4 Public Comment Issues Raised.....	ES-16
ES.5 Issues to be Resolved.....	ES-16
Chapter 1: Introduction	1-1
1.1 Introduction	1-1
1.2 Background	1-1
1.2.1 Project Location	1-1
1.2.2 Project Overview	1-1
1.3 CEQA and the Purpose of an EIR	1-2
1.4 Lead, Responsible, and Trustee Agencies	1-2
1.5 Purpose and Use of SEIR.....	1-6
1.6 Scope and Content of the Draft SEIR	1-8
1.6.1 Comments Received in Response to the IS/NOP.....	1-9
1.7 Organization of the Draft SEIR	1-10
1.8 Key Principles Guiding Preparation of this Draft SEIR.....	1-11
1.8.1 Emphasis on Significant Environmental Effects	1-11
1.8.2 Forecasting.....	1-12
1.8.3 Reliance on Environmental Thresholds and Substantial Evidence	1-12
1.8.4 Duty to Mitigate.....	1-12
1.8.5 Scope of Analysis	1-13
1.9 Availability of the Draft SEIR.....	1-13
Chapter 2: Project Description.....	2-1
2.1 Introduction	2-1
2.2 Background and Project Overview	2-1
2.2.1 Background	2-1

2.2.2	Previous Environmental Documentation.....	2-1
2.3	Project Purpose, Need, and Objectives	2-3
2.3.1	Purpose and Need	2-3
2.3.2	Project Objectives	2-3
2.4	Project Location and Setting.....	2-3
2.4.1	Regional Setting.....	2-3
2.4.2	Surrounding and Nearby Land Use.....	2-3
2.4.3	Existing Land Use and Zoning.....	2-4
2.4.4	Project Site	2-9
2.4.5	Current Operations	2-9
2.4.6	Regulatory Agency Permits.....	2-15
2.4.7	CEQA Baseline.....	2-19
2.5	Proposed Project Elements	2-20
2.5.1	Project Components	2-20
2.6	Relationship to Existing Statutes, Plans, Policies, and Other Regulatory Requirements	2-23
2.7	Other Public Agencies Whose Approval May be Required for Operations at the Site.....	2-28
Chapter 3: Environmental Impact Analysis		3.0-1
3.0-1	Introduction.....	3.0-1
3.0-2	Terminology Used in the Environmental Analysis.....	3.0-1
3.1	Air Quality and Meteorology.....	3.1-1
	Summary of Section.....	3.1-1
	Key Points.....	3.1-1
3.1.1	Introduction	3.1-1
3.1.2	Environmental Setting	3.1-2
3.1.3	Regulatory Setting.....	3.1-8
3.1.4	Methodology.....	3.1-17
3.1.5	Thresholds of Significance	3.1-23
3.1.6	Impact Determination.....	3.1-25
3.1.7	Significant Unavoidable Impacts	3.1-33
3.2	Cultural Resources.....	3.2-1
	Summary of Section.....	3.2-1
	Key Points.....	3.2-1
3.2.1	Introduction	3.2-2
3.2.2	Existing Conditions.....	3.2-2
3.2.3	Environmental Setting	3.2-4
3.2.4	Regulatory Setting.....	3.2-8
3.2.5	Methodology.....	3.2-14
3.2.6	Impact Determination.....	3.2-18
3.2.7	Significant Unavoidable Impacts	3.2-23

3.3	Greenhouse Gas Emissions.....	3.3-1
	Summary of Section.....	3.3-1
	Key Points.....	3.3-1
3.3.1	Introduction	3.3-1
3.3.2	Environmental Setting	3.3-1
3.3.3	Regulatory Setting.....	3.3-5
3.3.4	Methodology.....	3.3-11
3.3.5	Thresholds of Significance	3.3-14
3.3.6	Impact Determination.....	3.3-15
3.1.7	Significant Unavoidable Impacts	3.3-21
3.4	Hazards.....	3.4-1
	Section Summary.....	3.4-1
	Key Points.....	3.4-1
3.4.1	Introduction	3.4-1
3.4.2	Environmental Setting	3.4-2
3.4.3	Regulatory Setting.....	3.4-5
3.4.4	Methodology.....	3.4-14
3.4.5	Thresholds of Significance	3.4-14
3.4.6	Impact Determination.....	3.4-15
3.4.7	Significant Unavoidable Impacts	3.4-22
3.5	Hydrology and Water Quality.....	3.5-1
	Section Summary.....	3.5-1
	Key Points:.....	3.5-1
3.5.1	Introduction	3.5-2
3.5.2	Environmental Setting/CEQA Baseline.....	3.5-2
3.5.3	Regulatory Setting.....	3.5-7
3.5.4	Methodology.....	3.5-10
3.5.5	Thresholds Of Significance.....	3.5-11
3.5.6	Impact Determination.....	3.5-11
3.5.7	Significant Unavoidable Impacts	3.5-16
Chapter 4: Cumulative Analysis		4-1
	Chapter Summary	4-1
	Key Points.....	4-1
4.1	Introduction	4-1
4.1.1	Requirements for Cumulative Impact Analysis	4-1
4.1.2	Projects Considered in the Cumulative Analysis.....	4-2
4.2	Cumulative Impact Analysis	4-13
4.2.1	Air Quality	4-13
4.2.2	Cultural Resources.....	4-18
4.2.3	Greenhouse Gas Emissions	4-22
4.2.4	Hazards and Hazardous Materials	4-24

4.2.5 Hydrology and Water Quality 4-26

4.3 Mitigation Monitoring..... 4-29

Chapter 5: Significant Irreversible Changes.....5-1

5.1 Introduction5-1

5.2 Analysis of Irreversible Changes5-1

Chapter 6: References.....6-1

Chapter 7: List of SEIR Preparers 7-1

Chapter 8: Acronyms and Abbreviations8-1

Tables

ES-1 Summary of Impacts and Mitigation for the Proposed Project..... ES-12

1-1 Agencies Expected to Use this SEIR1-5

1-2 List of Required Discretionary Actions.....1-8

1-3 Summary of Written Comments Received on the Initial Study/
Notice of Preparation.....1-9

2-1 1996 Approved Project as Compared to Fiscal Year 2021/2022 Operations 2-19

2-2 SA Recycling Operations..... 2-20

2-3 Weight of Recyclable Steel for Each Department - Metal Scrap Weight 2-21

2-4 Estimated Total Volume of Concrete to be Removed 2-22

2-5 Statutes, Plans, Policies, and Other Regulatory Requirements 2-23

3.1-1 National and California Ambient Air Quality Standards..... 3.1-4

3.1-2 SCAB Attainment Status..... 3.1-4

3.1-3 Maximum Pollutant Concentrations Measured at the San Pedro
Monitoring Station 3.1-6

3.1-4 Baseline, Peak Day Emissions (pounds per day).....3.1-23

3.1-5 SCAQMD Regional Thresholds, Peak Day Emissions (pounds/day)3.1-24

3.1-6 SCAQMD Localized Significance Thresholds, Peak Day Emissions (pounds/day)3.1-24

3.1-7 Proposed Project Peak Day Emissions (pounds/day)3.1-26

3.1-8 Proposed Project On-Site Peak Day Emissions (pounds/day)3.1-28

3.1-9 Summary Matrix of Potential Impacts and Mitigation Measures for Air Quality
Associated with the Proposed Project3.1-32

3.2-1 Summary Matrix of Potential Impacts and Mitigation Measures/Standard
Conditions for Cultural Resources Associated with the Proposed Project3.2-22

3.3-1 CEQA Baseline, GHG Emissions (metric tons per year)3.3-13

3.3-2 Proposed Project Annual GHG Emissions (metric tons/year)3.3-15

3.3.-3 Consideration of State and Local GHG-Reducing Plans and Policies.....3.3-17

3.3-4 Summary Matrix of Potential Impacts and Mitigation Measures for GHG
Emissions Associated with the Proposed Project3.3-21

3.4-1 Summary Matrix of Potential Impacts and Mitigation Measures for Hazards Associated with the Proposed Project 3.4-21

3.5-1 Existing Beneficial Uses for Surface Waters of Water Bodies with Potential to Be Affected by the Project..... 3.5-3

3.5-2 Water Quality Impairments within the Project Area: Los Angeles/ Long Beach Inner Harbor 3.5-3

3.5-1 Summary Matrix of Potential Impacts and Mitigation Measures for Hazards Associated with the Proposed Project 3.5-16

4-1 Related and Cumulative Projects..... 4-7

Figures

ES-1 Regional Location ES-7

ES-2 Local Vicinity..... ES-9

1-1 Regional Location 1-3

2-1 Regional Location 2-5

2-2 Local Vicinity..... 2-7

2-3 Aerial Photograph..... 2-11

2-4 Dust Control and Noise Suppression Site Plan 2-13

3.1.1 South Coast Air Basin 3.1-3

3.3.1 South Coast Air Basin..... 3.3-2

4-1 Location of Cumulative Projects 4-5

Appendices

A Notice of Preparation

B Air Quality and GHG Calculations

C Cultural Records Search Bibliography

D Updated Department of Parks and Recreation Reports

E1 Department of Toxic Substances Control and SA Recycling Consent Order Final

E2 Off-Site Light Fibrous Material Investigative Work Plan (Amended)

E3 Off-Site Light Fibrous Material Cleanup/Removal Work Plan (Amended)

The Page Intentionally Left Blank.