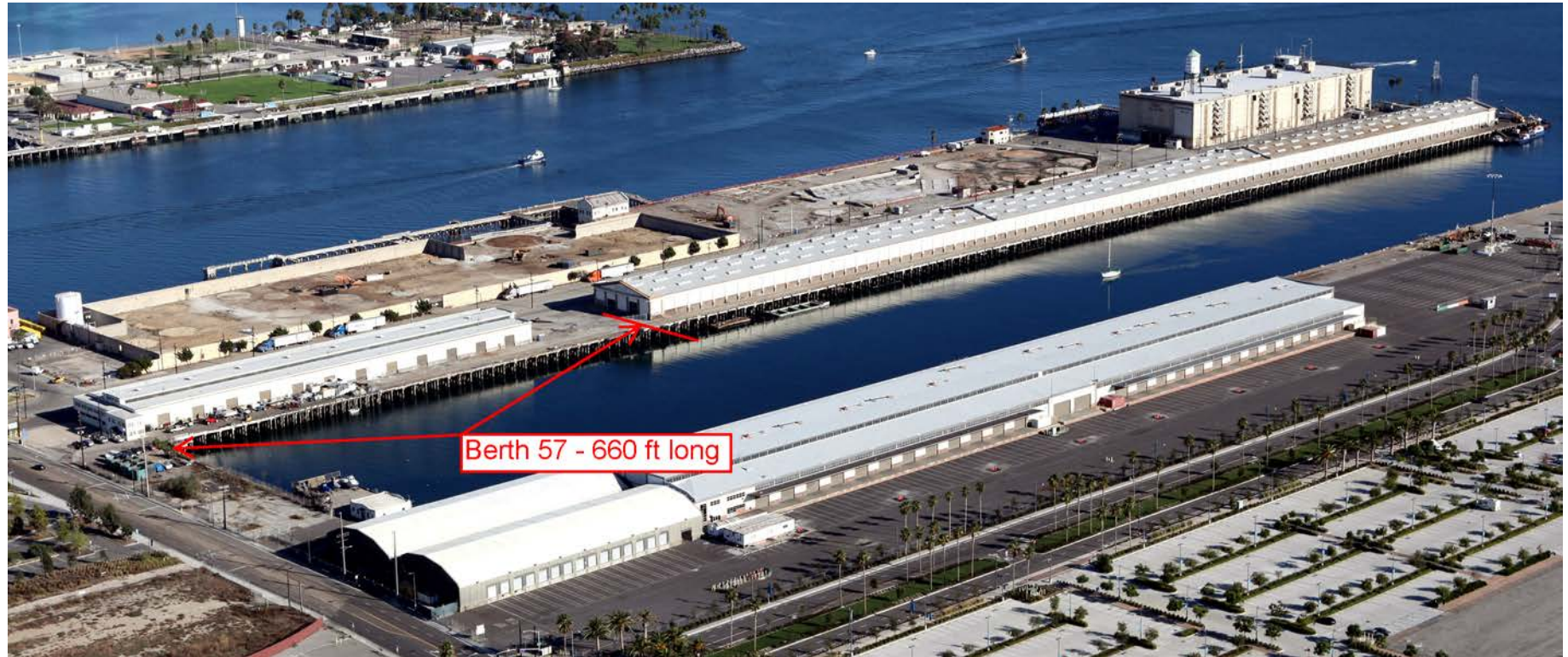


# Berth 57 Wharf & Ground Improvements Conceptual Study



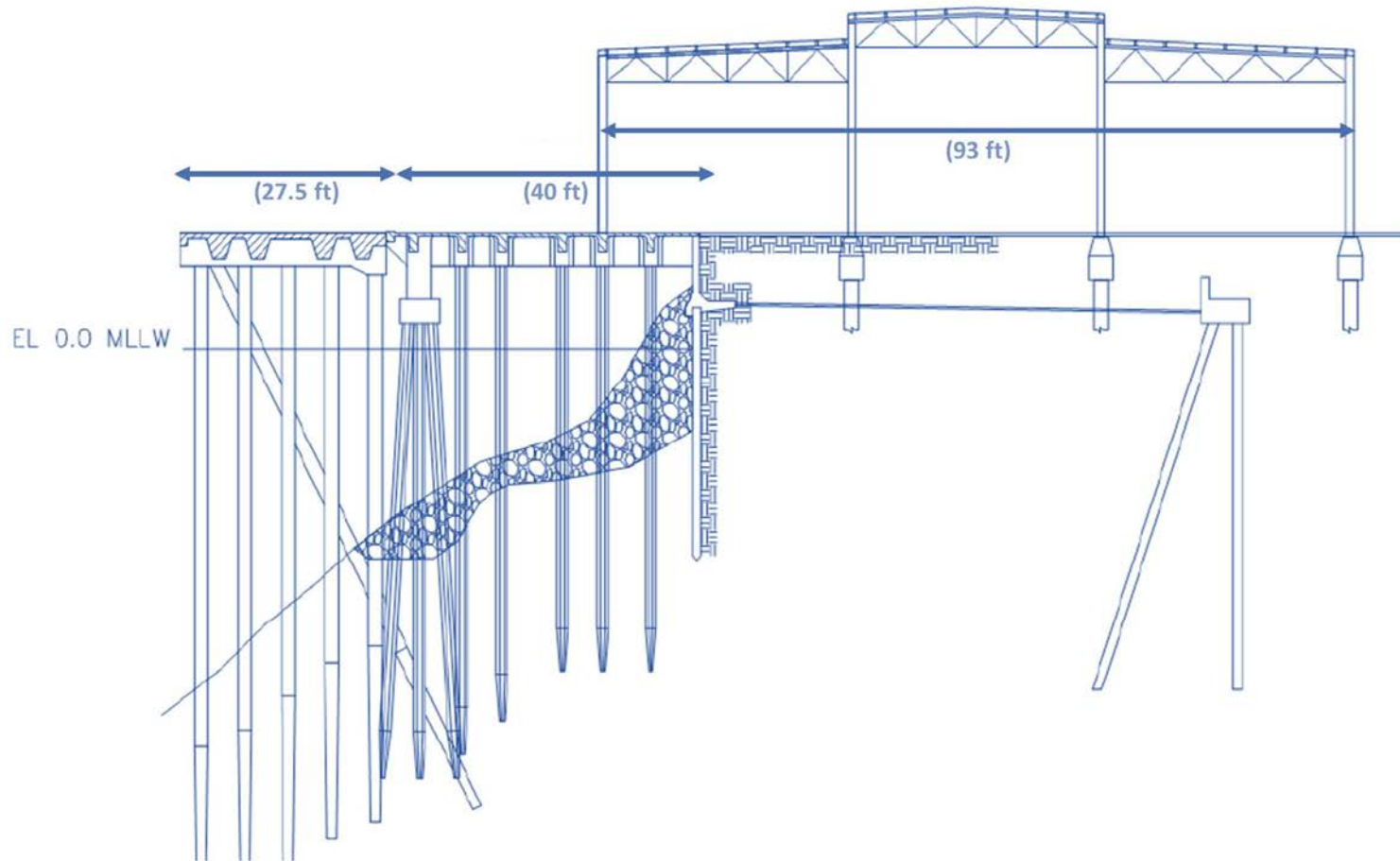
# PROJECT SITE



# Berth 57 Wharf and Ground Improvements

- ❑ Existing Berth 57 Wharf Section
- ❑ Alternative 1 – EIR Scope of Work
- ❑ Alternative 7 – recommended alternative to design
- ❑ Schedule

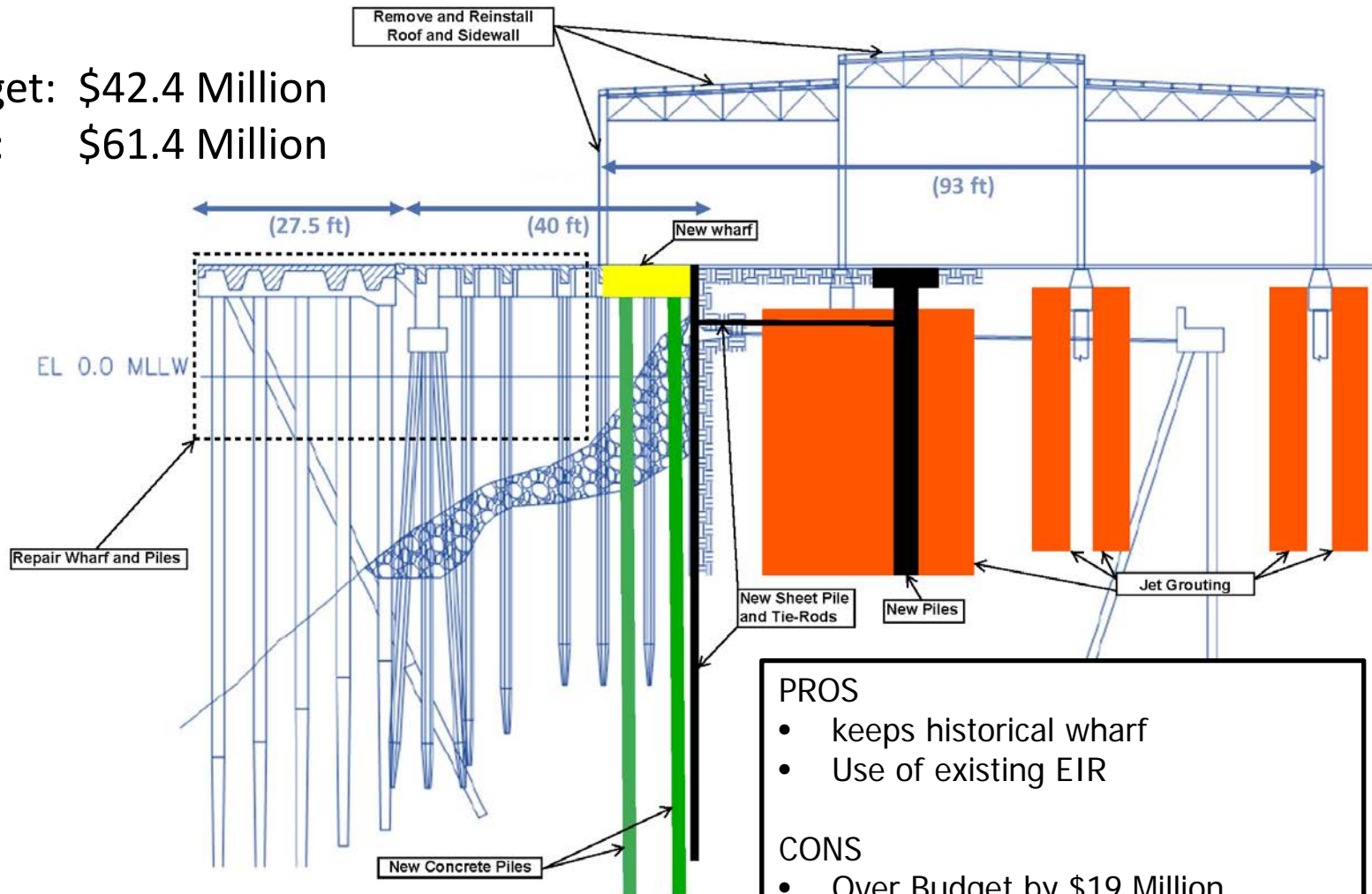
# Berth 57 Existing Wharf Section



# Alternative 1: EIR Scope of Work

Budget: \$42.4 Million

Cost: \$61.4 Million



## PROS

- keeps historical wharf
- Use of existing EIR

## CONS

- Over Budget by \$19 Million
- Compromises existing warehouse

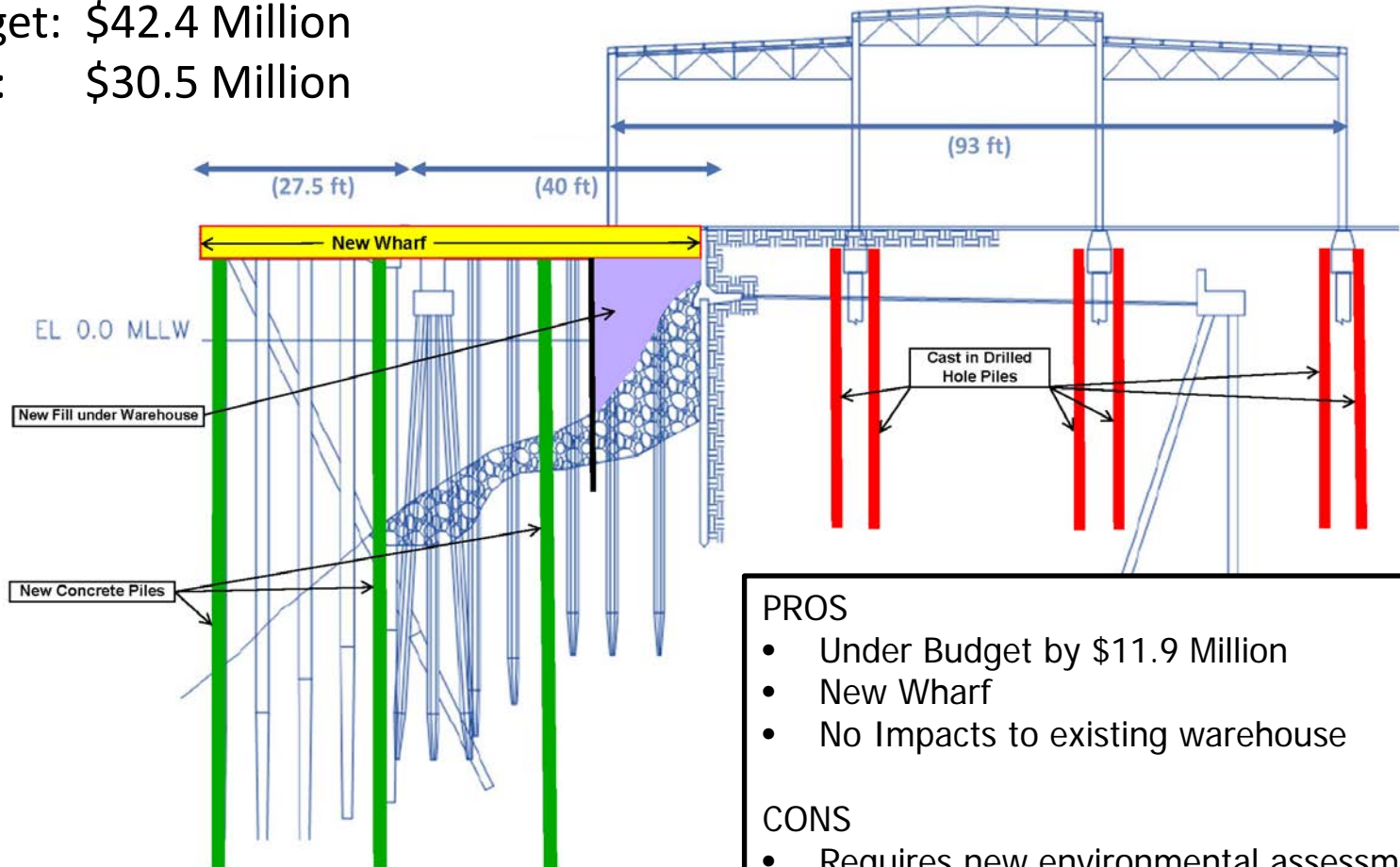


# Recommended

## Alternative 7: New Wharf with fill under Warehouse

Budget: \$42.4 Million

Cost: \$30.5 Million



### PROS

- Under Budget by \$11.9 Million
- New Wharf
- No Impacts to existing warehouse

### CONS

- Requires new environmental assessment

# Alternatives - Cost Estimates

Alternative	Description	Project Cost
1	EIR - Improved Landside Piles	\$ 61,400,000
2	Partial fill under wharf with existing piles at front three rows	\$ 35,000,000
3	Partial fill under wharf with new piles at front three rows	\$ 35,100,000
4	New wharf with existing piles at front three rows	\$ 34,300,000
5	New wharf with new piles at front three rows	\$ 35,200,000
6	Extended fill	\$ 33,900,000
7	New wharf with fill under warehouse	\$ 30,500,000
8	Complete fill under entire wharf	\$ 31,000,000