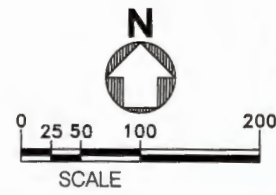


DWG: N:\cardinal\p924\13 WILEE\DWG\CardinalPipeline.dwg, 10/17/17, MALGORD  
 DATE: 10/08/2017 2:29pm, 10/17/17, 4:47, 13/01/CITY OF LOS ANGELES, 11/08/14, 08/1, 10/18  
 42684.DWG

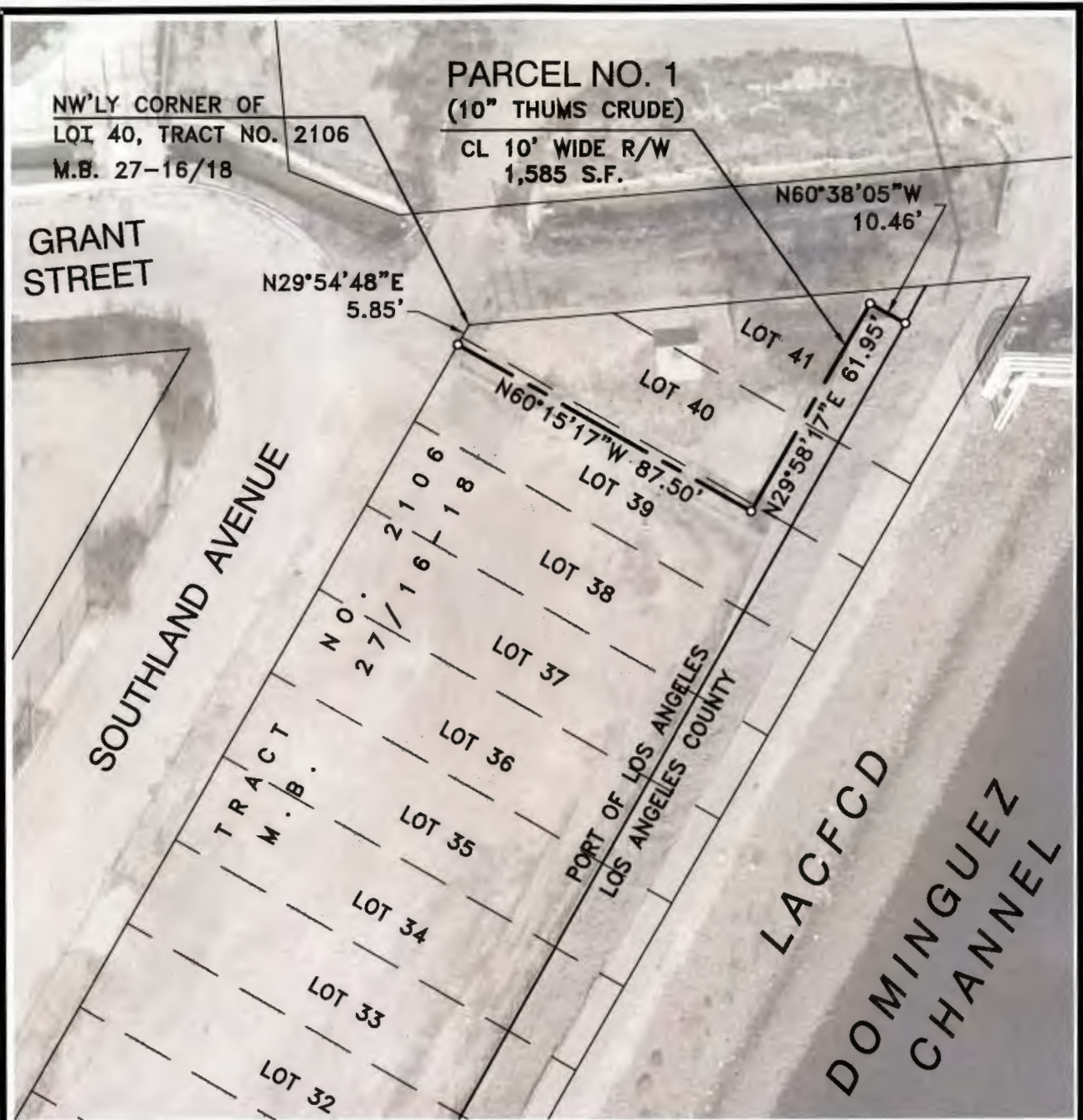


- NOTE:
- 1) No substructures are shown on this drawing. Accurate substructure information must be obtained from lessees and L.A.H.D. engineering records.
  - 2) Horizontal Datum is based on the North American Datum of 1983 (NAD 83), California Coordinate System, Zone 5, Feet.
  - 3) All distances shown on this drawing are grid distances. To obtain a reasonable representation of the ground distance, divide the distance herein by the average scale factor of 1.000076.
  - 4) Parcel No. 1 represents the alignment of the Breo Crude West Pipeline.

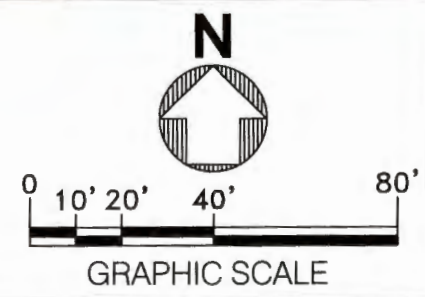


NO.	DATE	DRAWN	REVISIONS -	CH'KD	APP'D	SCALE: 1" = 100'	RECOMMENDED FOR APPROVAL	PERMIT MAP - AUTHORITY NO. P924	
						DRAWN: DRR 10/17	CHIEF OF DESIGN	<b>CARDINAL PIPELINE, LLC</b>	
						CHECKED: PH 10/17	<i>Monte Lopez</i>		
						DESIGNED: D. RAASCH 10/17	ASSISTANT CHIEF HARBOR ENGINEER	APPROVED	DRAWING NUMBER
						ENGR/ARCH	<i>Stuart L. Fricke</i>	<i>John M. Wall</i>	45684
						<i>Daryl R. Raasch</i>	CHIEF HARBOR ENGINEER	 THE PORT OF LOS ANGELES ENGINEERING DIVISION <small>435 S. PALM VARDEN STREET SAN PEDRO CA 90731-0300</small>	

TRANSMITTAL 2



- NOTE:**
- 1) No substructures are shown on this drawing. Accurate substructure information must be obtained from lessees and L.A.H.D. engineering records.
  - 2) Horizontal Datum is based on the North American Datum of 1983 (NAD 83), California Coordinate System, Zone 5, Feet.
  - 3) All distances shown on this drawing are grid distances. To obtain a reasonable representation of the ground distance, divide the distance herein by the average scale factor of 1.000076.



DWG: N:\card\proj\03\01\LEASER\signed Drawings\5-7350.dwg USER: RAASCHD  
 DATE: Nov 08 2017 2:28pm XREFS:BDRY-POLA BDRY-CITY IMAGE:LA\_6487\_1741s LA\_6487\_1741b  
 POLAPROS\_VER.1\_12/98  
 5-7350.DWG

SCALE: 1" = 40'	CHIEF OF DESIGN <i>Mark Roush</i>	<b>PERMIT MAP - AUTHORITY NO. P924</b>	
DRAWN: DRR 10/17	ASSISTANT CHIEF OF HARBOR ENGINEER <i>Stuart L. Fricke</i>		
CHECKED: PH 10/17	DESIGNED: D. RAASCH	<b>THE PORT OF LOS ANGELES ENGINEERING DIVISION 425 S. PALOS VERDES STREET SAN PEDRO CA 90731-3309</b>	
ENGR/ARCH <i>Daryl R. Raasch</i>	CHIEF HARBOR ENGINEER <i>William Wall</i>		
	DATE 11-8-17		