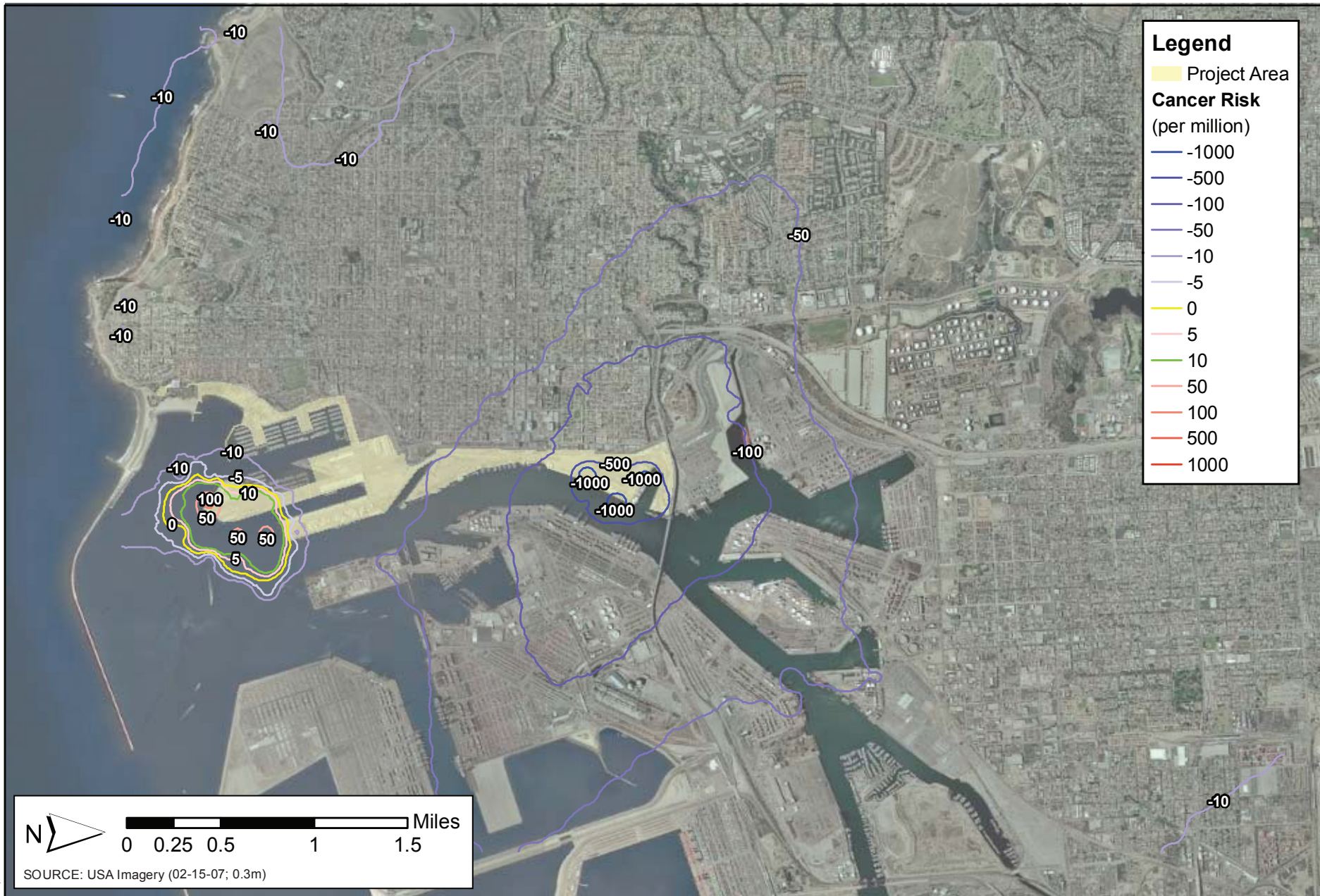


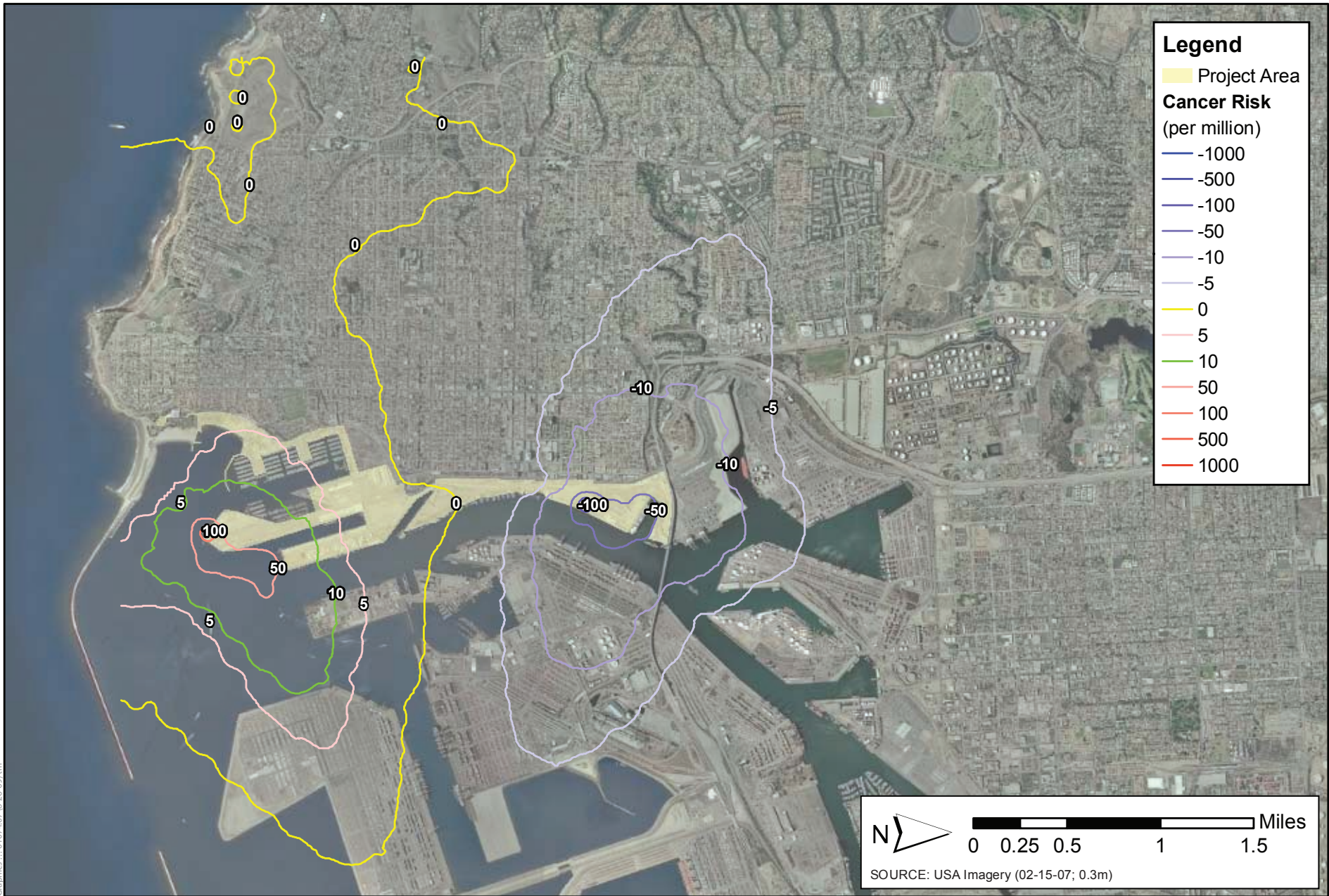
# D.3

**HEALTH RISK ASSESSMENT  
ADDITIONAL FIGURES D3.7-13, D3.7-14, D3.7-15,  
AND D3.7-16**



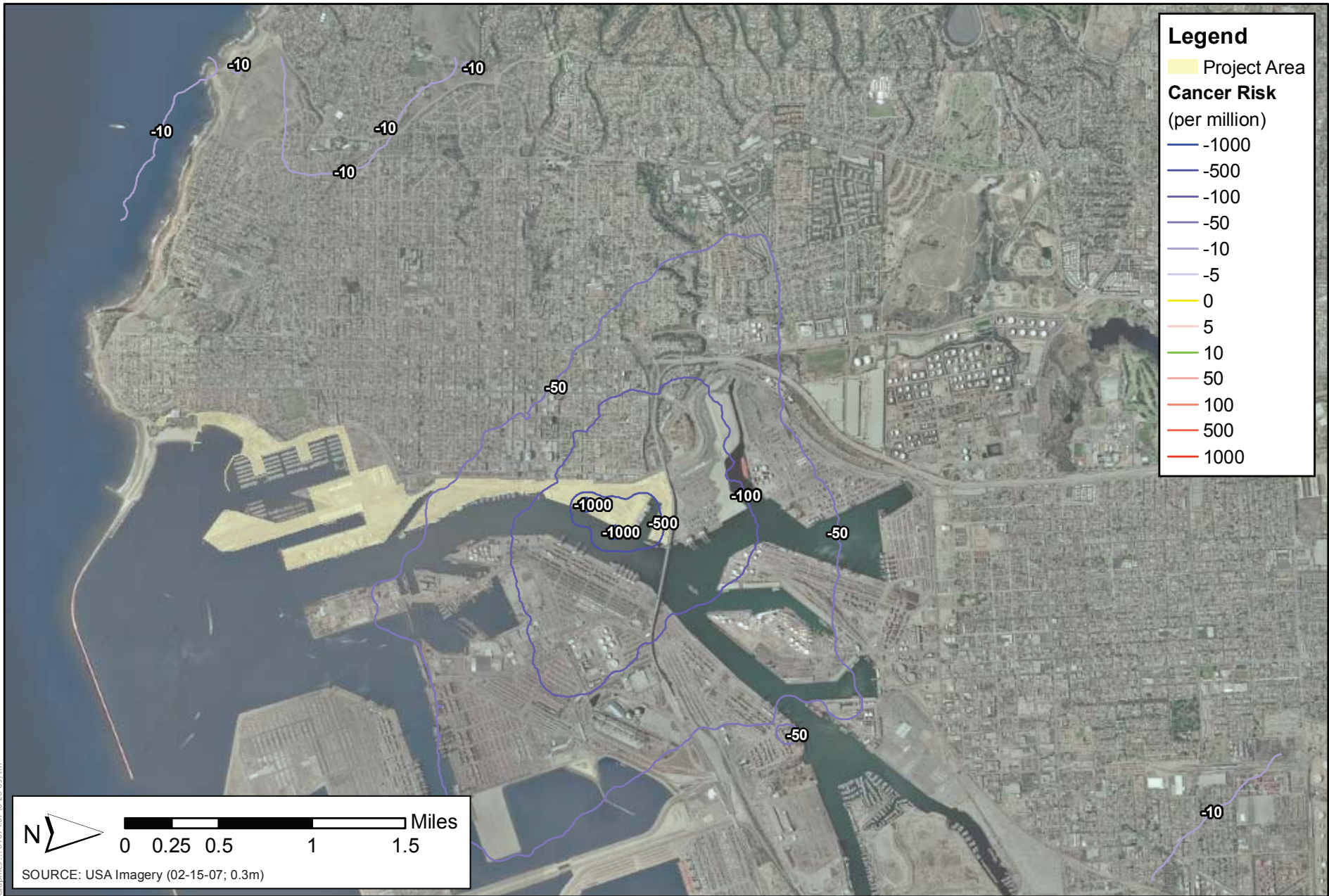
Graphics... 0107407 (8-26-09).tm

**Figure D3.7-13**  
**Isopleths of Residential Lifetime Cancer Risk:**  
**Mitigated Alternative 1 Minus CEQA Baseline**  
**San Pedro Waterfront Project**



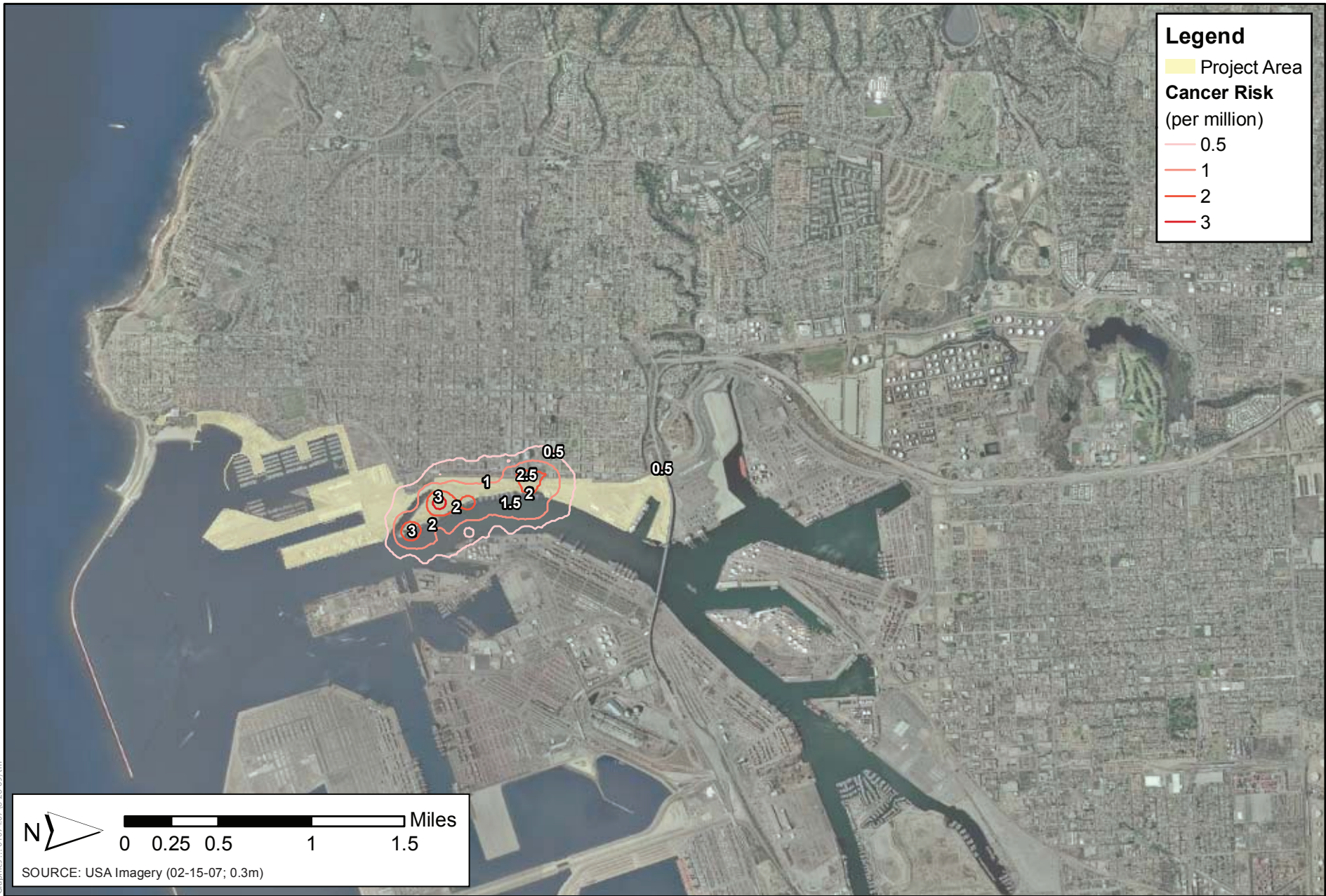
Graphics... 0107407 (8-26-09).tcm

**Figure D3.7-14**  
**Isopleths of Residential Lifetime Cancer Risk:**  
**Mitigated Alternative 1 Minus NEPA Baseline**  
**San Pedro Waterfront Project**



Graphics...0107407 (8-26-09).tm

**Figure D3.7-15**  
**Isopleths of Residential Lifetime Cancer Risk:**  
**Mitigated Alternative 4 Minus CEQA Baseline**  
**San Pedro Waterfront Project**



Graphics...0107407 (8-26-09).tm

**Figure D3.7-16**  
**Isopleths of Residential Lifetime Cancer Risk:**  
**Mitigated Alternative 4 Minus NEPA Baseline**  
**San Pedro Waterfront Project**