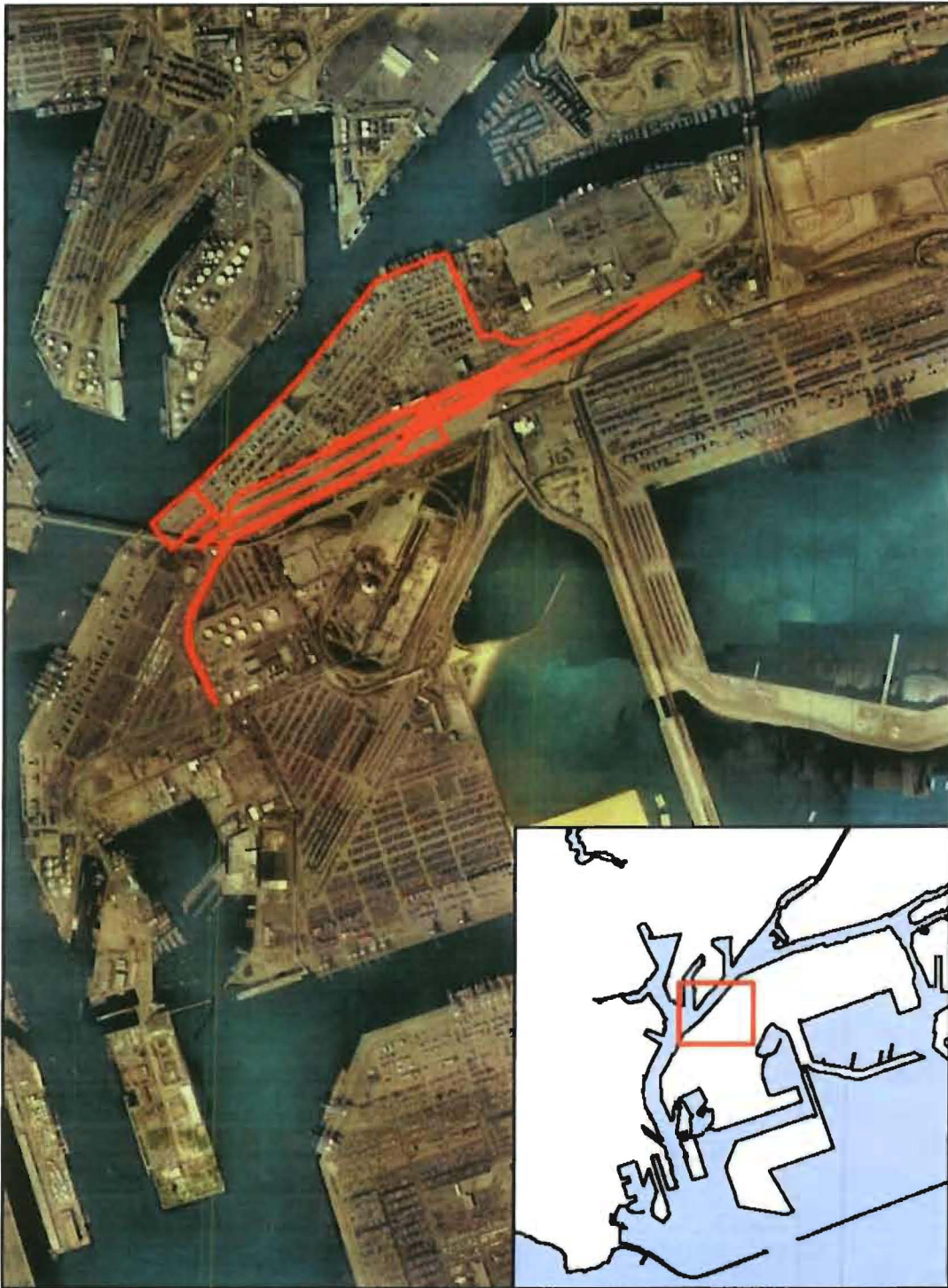


BERTHS 211-224



N
Transmittal No. ___

0 1,250 2,500
Feet

Harbor Department,
Planning & Economic Development
Map Produced 01/2011

LA
THE PORT
OF LOS ANGELES

RESOLUTION NO.

A Resolution of the Board of Harbor Commissioners of the City of Los Angeles ("Board") concerning Permit No. 692 with Yusen Terminals, Inc.

WHEREAS, Yusen Terminals, Inc. ("YTI") is the assignee of Nippon Yusen Kaisha and the current tenant of premises which include a container terminal at Berths 211-224 ("YTI Terminal") at the Port of Los Angeles ("Port"), under Los Angeles Harbor Department ("Harbor Department") Permit No. 692, as amended ("Permit");

WHEREAS, the Harbor Department, in conjunction with the U.S. Army Corps of Engineers, has completed the Main Channel Deepening project in the vicinity of the YTI Terminal;

WHEREAS, the Main Channel Deepening project now provides -53 ft. depths in the main channel and turning basins at the Port, thereby accommodating the largest modern container ships in service and under construction;

WHEREAS, the YTI Terminal is presently unable to take full advantage of the -53 ft. main channel depth due to wharves that only allow a maximum -45 ft. berth depth;

WHEREAS, YTI desires to:

- (a) improve the Berths 214-216 wharves and deepen the berth to accommodate new container vessels requiring -53 ft. berth depth, thereby providing the YTI Terminal with access to the newest and largest container vessels;
- (b) improve the Berths 217-220 wharves to accommodate 100-foot gauge gantry cranes and deepen the berth to accommodate new container vessels requiring -47 ft. berth depth;
- (c) obtain additional on-dock rail yard capacity in its portion of the Terminal Island Container Transfer Facility ("TICTF"); and
- (d) to obtain these terminal improvements in a manner that minimizes disruption to ongoing operations;

WHEREAS, YTI and the Harbor Department staff have worked closely together over the past months to arrive at a draft project scope consistent with the above-described YTI business objectives and a proposed schedule that would address YTI's needs ("Project");

TRANSMITTAL 2

WHEREAS, the proposed Project is also subject to compliance with all relevant provisions of the California Environmental Quality Act ("CEQA"), National Environmental Policy Act ("NEPA"), and the California Coastal Act ("Coastal Act"), the Board and U.S. Army Corps of Engineers certification of an environmental assessment, issuance of all relevant and necessary permits, all other applicable regulations, ordinances, policies and procedures governing development, leasing and use of Department property, and approval by the Board and the Los Angeles City Council ("City Council"); and

WHEREAS, the Board supports the planning of a proposed Project in order to preserve YTI's continued presence in the Port, subject to the certification of an environmental assessment and necessary approvals by the Board and City Council.

NOW, THEREFORE, the Board of Harbor Commissioners resolves that:

- 1) The Board supports the Executive Director directing Harbor Department staff to initiate the development process on the aforementioned YTI Terminal improvements by starting the preparation of an Environmental Impact Statement/Environmental Impact Report ("EIS/EIR") and performing the necessary preliminary design, cost estimating, and schedule planning work to support this EIS/EIR.
- 2) This Resolution is a pre-decisional action of the Board that reflects its interest in commencing the planning of the proposed Project and is not legally binding. Any proposed Project concerning YTI Terminal or berth or wharf improvements would be subject to consideration and action of the Board and the City Council in their sole and absolute discretion as provided by the Charter of the City of Los Angeles, CEQA, NEPA, the Coastal Act and other applicable law.

I HEREBY CERTIFY that the foregoing Resolution was adopted by the Board of Harbor Commissioners at its meeting held

KORLA TONDREAU
Commission Secretary

APPROVED AS TO FORM

February 7, 2013
CARMEN A. TRUTANICH, City Attorney

By: Joy M. Crose
JOY M. CROSE, Assistant General Counsel