

**SOUTH WILMINGTON
GRADE SEPARATION**

**TRAPAC TERMINAL
BERTHS 135-147**

LOCATION KEY PLAN

SOUTH WILMINGTON GRADE SEPARATION

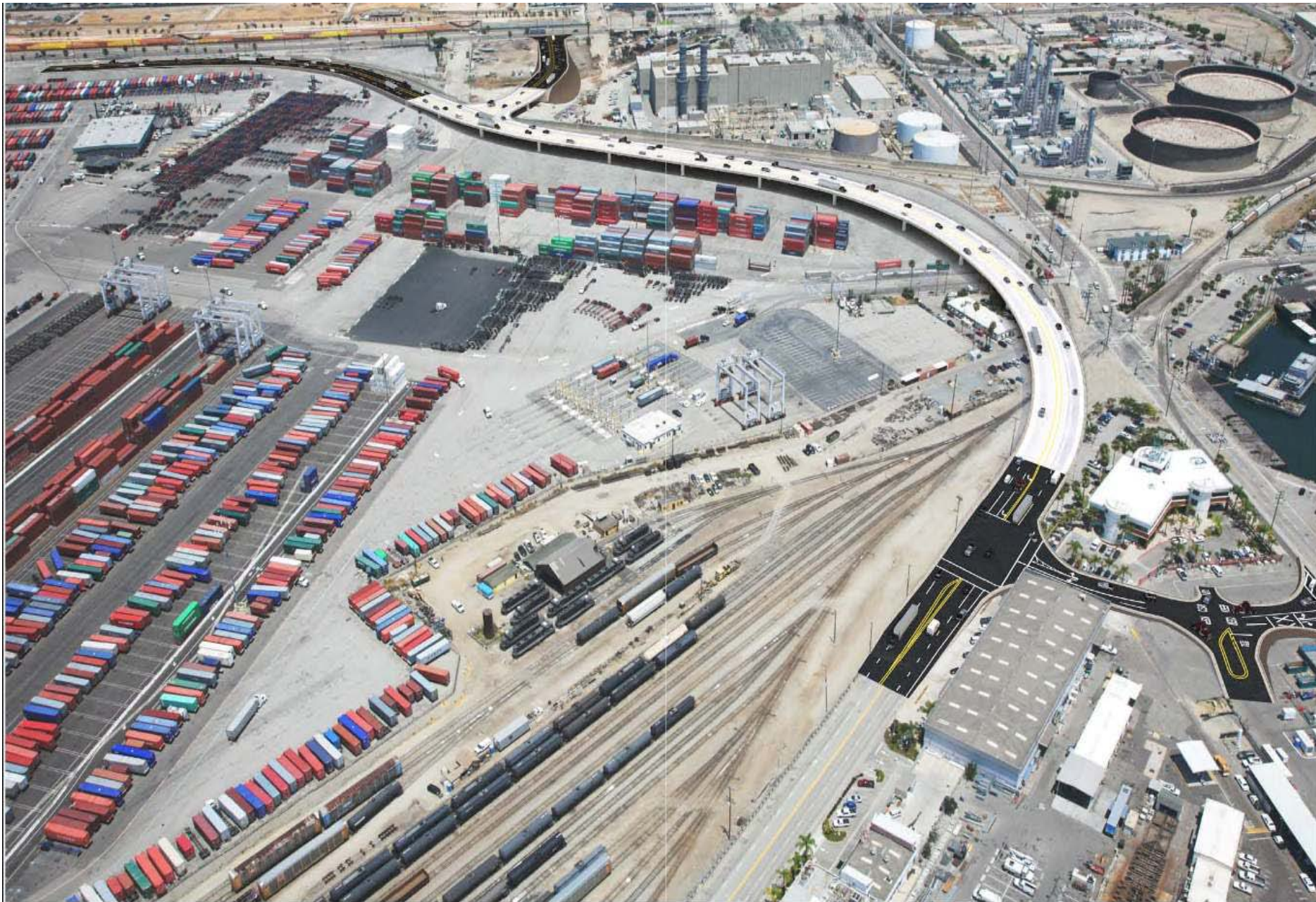
SCALE: NTS	DATE: OCT. 2012
DRAWN: M. SWORDS	SPEC. NO. 2690A
CHECKED: M. SWORDS	
DESIGNED:	
ENGR/ARCH	



**THE PORT OF
LOS ANGELES**
ENGINEERING DIVISION P.O. BOX 151 SAN PEDRO, CA 90733-0151

DRAWING NUMBER
Transmittal No. 3

POLAPROS_VER.1_12/96
X:XXXX XXXX



Conceptual Design of The South Wilmington Grade Separation