

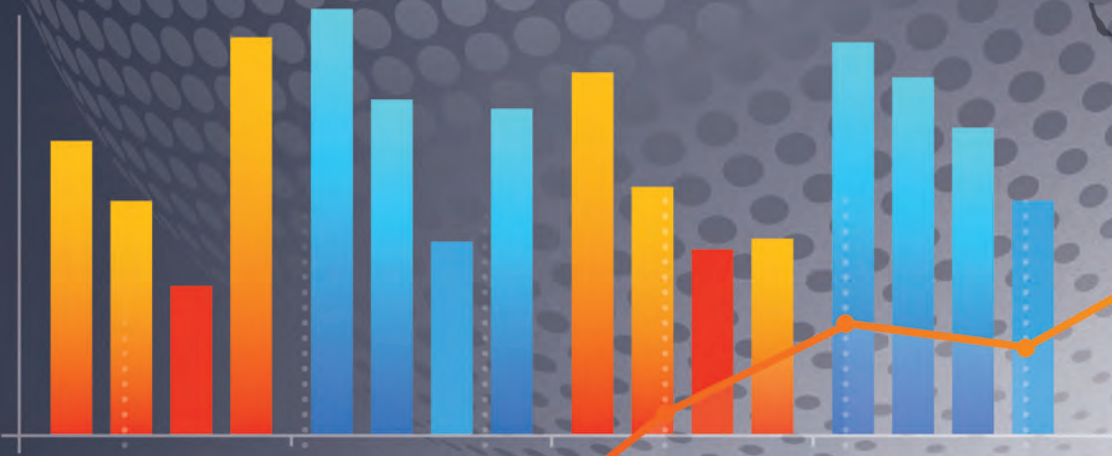
WORLD CITY

ustradenumbers.com

2022 L.A.-LONG BEACH

TRADE NUMBERS

San Pedro Bay Ports' \$400.60 billion in two-way trade with the world



Sponsored by:



LOS ANGELES AREA
CHAMBER OF COMMERCE



LOS ANGELES AREA
CHAMBER OF COMMERCE

Advancing Global Trade & Foreign Investment in Southern California



GLOBAL ENGAGEMENT & INTERNATIONAL TRADE

The Los Angeles region has come a long way and has become a center for technology, global commerce, culture and entertainment. Since 1888, the Los Angeles Area Chamber of Commerce has been there to help support and chart a course forward for such a dynamic region. And it's still happening today.

- ▶ **Los Angeles Regional Export Council** – helps put more businesses on a path to benefit from exporting by encouraging and assisting them as they look to begin or increase trade activity.
- ▶ **World Trade Week** – highlights the importance and benefits of and promotes global trade in Southern California through more than 40 events held throughout the month of May. Visit worldtradeweek.com.
- ▶ **Global Initiatives Council** – develops programs and events to promote global trade and investment to create regional employment.
- ▶ **Trade Missions** – matches Southern California businesses with potential partners overseas.
- ▶ **Diplomatic & Commercial Officers Group** – provides the infrastructure and venue where foreign trade diplomats can develop their own international trade strategies and programs as they perform their professional responsibilities.

For more information about the Los Angeles Area Chamber of Commerce or to find out how you can get involved with Global Engagement and International Trade, visit lachamber.com.



International trade

Vastly underappreciated, extraordinary even during Covid

One of the great benefits of what I do for a living is that I get to visit seaports, airports and border crossings all over the country.

From the seaports of Los Angeles and Long Beach in the southwest to the Port of Boston in the northeast. From Miami International Airport in the southeast to Seattle-Tacoma International in the northwest.

Seaports in Savannah, Virginia, Hueneme and Tampa. Renamed ports like JaxPort, Port Houston (with a space), PortMiami (without), SeaPort Manatee and PhilaPort. Texas border crossings Port Laredo, Eagle Pass, Brownsville and Pharr.

But there's nothing quite like the sight of the twin ports of Los Angeles and Long Beach.

The ability to move products around the world is truly an extraordinary and vastly underappreciated miracle of modern engineering, logistics and technology. Prior to the Covid-19 pandemic, we treated trade like we treat water from the tap. We didn't give it a thought.

Then came the pandemic. And not just

any pandemic; it was the worst in a century, one that reverberates around the globe still.

While the ships stranded in the Pacific waters off San Pedro Bay came to symbolize a supply-chain crisis for many, I saw it differently. I was amazed the supply-chain system held up as well as it did, setting the stage for the United States to set records last year for total exports, total imports and, of course, total trade.

One takeaway should be, of course, to fortify our diversification in the supply chain. One takeaway should *not* be an all-out retreat from "just in time" for "just in case," as some have argued.

There are other improvements needed, of course.

One less critical but nevertheless important one is the reason for this first-ever L.A.-Long Beach TradeNumbers: the need for better, cleaner data.

Since 2006, WorldCity has produced publications for just the Port of Los Angeles some years, for just Los Angeles International Airport some years, and for the entire Los Angeles Customs district for many years. (The Customs district includes these three ports as well as

several others in the general area.)

But, previously we had not combined the two.

The data we have used in this publication as well as those we have done around the country since we first launched Miami TradeNumbers in 2001 originates with U.S. Customs and Border Protection. CBP feeds it to the Census Bureau, which is our source for our publications as well as our website, ustradenumbers.com.

But the Census Bureau data for the Port of Los Angeles and the Port of Long Beach is inaccurate. The data from Census clearly credits billions of dollars of imports that enter into the Port of Long Beach to the Port of Los Angeles. For the better part of a year, I have been working with CBP and Census to rectify this and a number of other issues in other parts of the country.

Because I included the Port of Los Angeles and the Port of Long Beach in this effort, the Port of Los Angeles suggested combining the data into one publication, which would, in effect, overcome the problem.

And so, you have it, L.A.-Long Beach TradeNumbers. Enjoy ... but marvel too.

@TradeDataGuy

our products

WorldCity has been producing TradeNumbers publications since 2001 for airports, seaports and border crossings across the United States. They are published annually in three formats: the Executive Summary format, a full 64-page magazine format, and a handy pocket-sized version. WorldCity also hosts a website, ustradenumbers.com, updated monthly with pages of data for more than 200 countries, more than 1,800 specific export and import commodities, and more than 450 airports, seaports and border crossings. WorldCity produces videos, hosts webinars and distributes newsletters. WorldCity syndicates its content to airports, seaports and border crossings, updated monthly. Data for those ports is also "unlocked" and available to all at ustradenumbers.com.

our people

PRESIDENT: Ken Roberts

MANAGEMENT STAFF: Tatiana Panzardi

DATA & WEBSITE DEVELOPMENT: George Avelino

VIDEO PRODUCTION: George Avelino

GRAPHIC DESIGN: Vivian Chavez, Eric Borrazas, Suzette Sullivan, Hiram Henriquez

there's more

DOWNLOAD versions of our publications, including this one, at ustradenumbers.com.

SUBSCRIBE for up to 10 years of data for any export, import, country, airport, seaport or border crossing with a subscription to ustradenumbers.com.

ACCESS sponsored pages, which are open to all, including the pages for Los Angeles International Airport, Miami International Airport, Port Laredo, Del Rio, Pharr, Eagle Pass, Port Hueneme, Port Everglades and Mexico. For more information about the Content Syndication program or other assistance, contact info@worldcityweb.com.

WORLD CITY

www.ustradenumbers.com



/ustradenumbers



@ustradenumbers



worldcity



@tradenumbers
@tradedataguy



/ustradenumbers

TOP 25 COUNTRIES

95.09% OF ALL SAN PEDRO BAY TRADE

KEY

- ▲ Ranking increased 2020 to 2021
- ▼ Ranking decreased 2020 to 2021

Rank change

- | | |
|------|------------------|
| 0 | 01. China |
| 0 | 02. Japan |
| 0 | 03. Vietnam |
| 0 | 04. Taiwan |
| 0 | 05. South Korea |
| 0 | 06. Thailand |
| 0 | 07. Indonesia |
| 0 | 08. Malaysia |
| 0 | 09. Australia |
| 0 | 10. Philippines |
| 1 ▲ | 11. Cambodia |
| -1 ▼ | 12. India |
| 6 ▲ | 13. Brazil |
| 2 ▲ | 14. Ecuador |
| -2 ▼ | 15. Germany |
| -2 ▼ | 16. Singapore |
| 0 | 17. Mexico |
| -3 ▼ | 18. Hong Kong |
| 1 ▲ | 19. Bangladesh |
| -2 ▼ | 20. Italy |
| 6 ▲ | 21. Saudi Arabia |
| 0 | 22. Iraq |
| -2 ▼ | 23. New Zealand |
| 27 ▲ | 24. Guyana |
| 0 | 25. Colombia |

CHART OF TOP 50 TRADE PARTNERS, MORE DETAILS, PAGE 12

PAGE 12



TRADE GAIN: Trade grew the most with China (\$23.06 billion) and Vietnam (\$6.29 billion).



TRADE LOSS: Trade fell the most with Australia (\$826.92 million) and Hong Kong (\$188.44 million).



Germany
\$3.20B

Circle size represents total trade with country



Italy
\$1.94B



Iraq
\$1.48B



Guyana
\$1.29B



Mexico
\$2.13B



Colombia
\$1.27B



Ecuador
\$3.24B



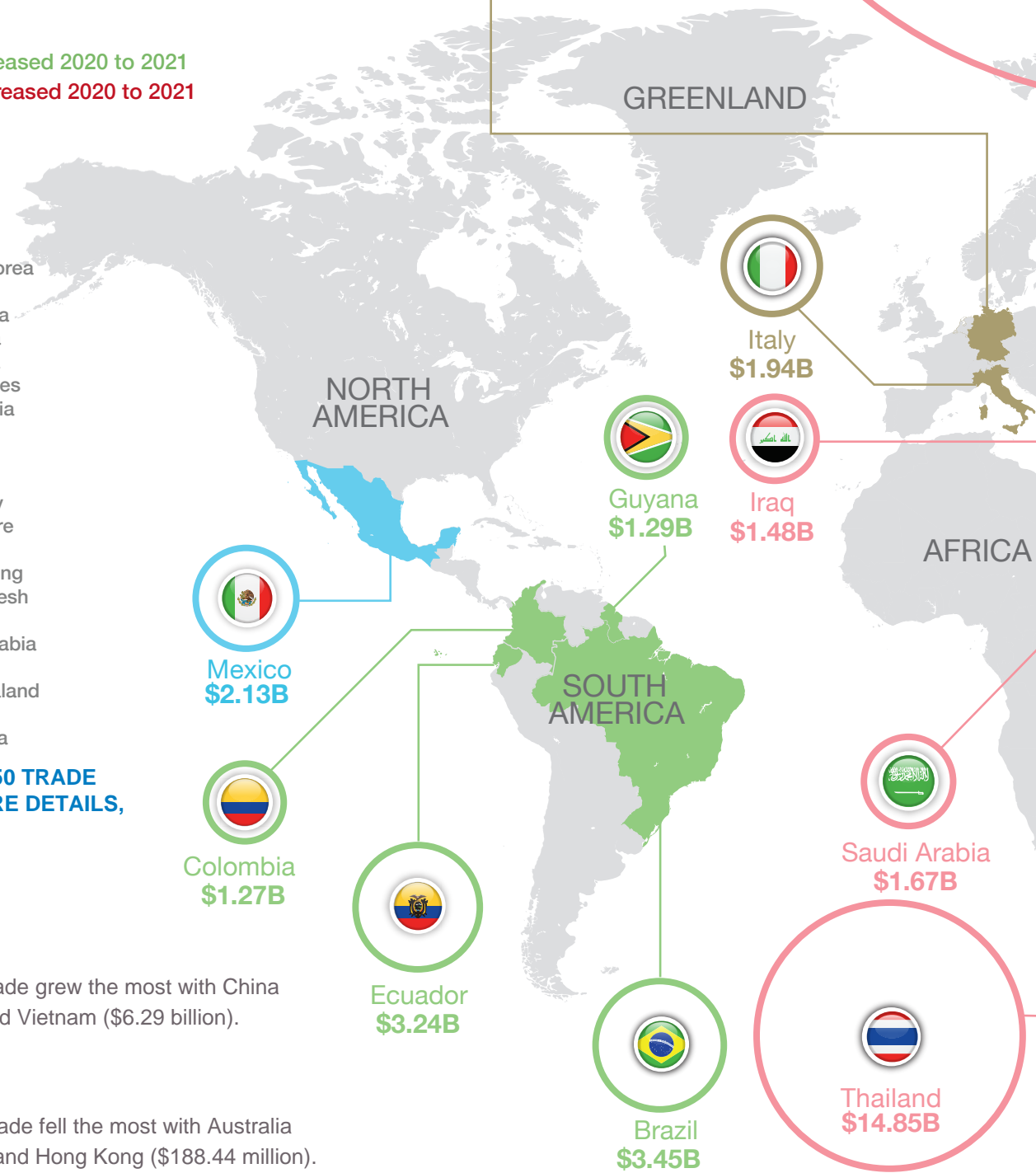
Brazil
\$3.45B



Saudi Arabia
\$1.67B



Thailand
\$14.85B



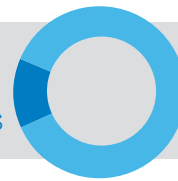
TOTAL TRADE IN BILLIONS
\$400.60
 13.92% ▲

EXPORTS IN BILLIONS
\$53.87
 -6.23% ▼

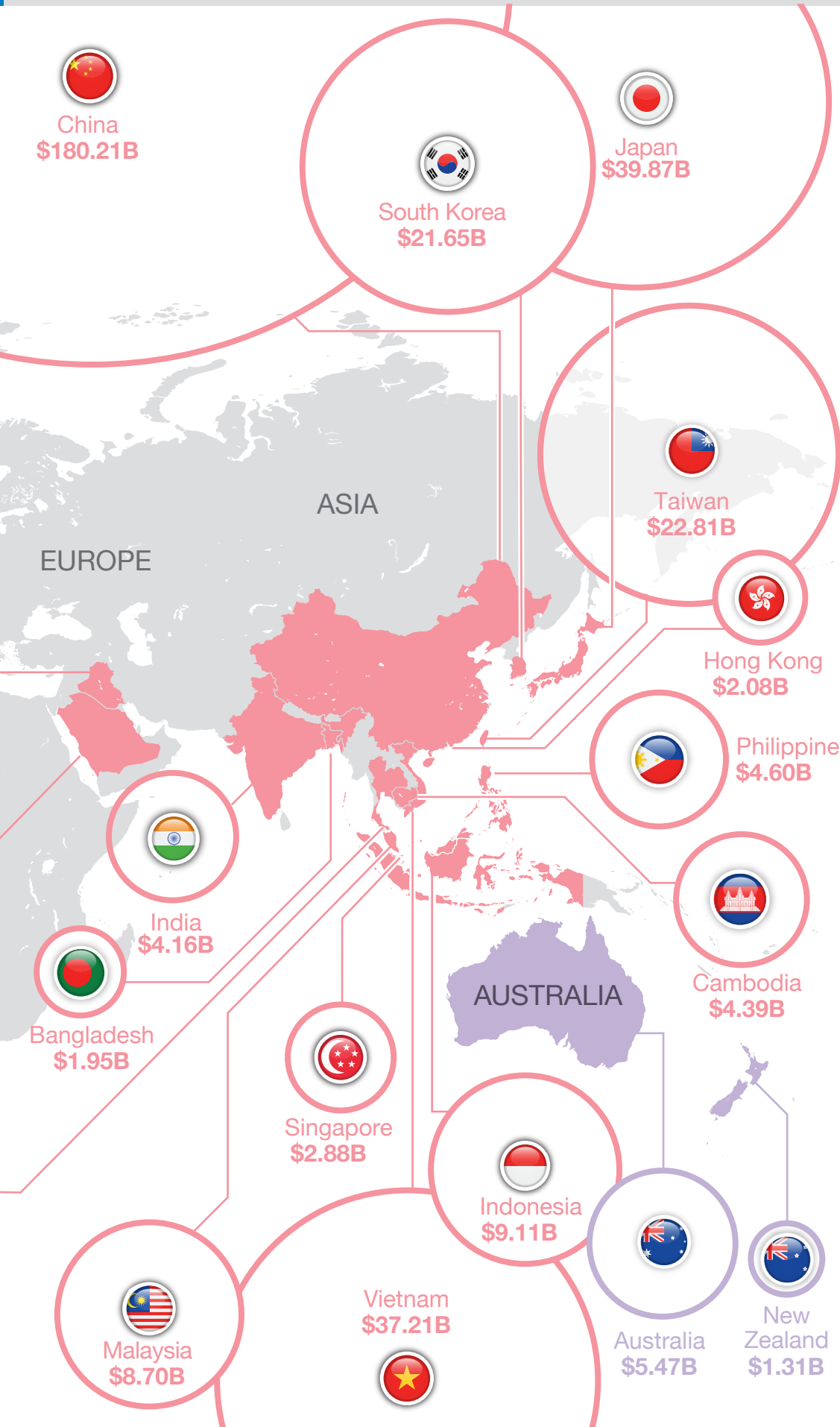
IMPORTS IN BILLIONS
\$346.73
 17.85% ▲

DEFICIT IN BILLIONS
-\$292.85

TRADE BALANCE
13%
 EXPORTS



87%
 IMPORTS



TOP 25 EXPORT PARTNERS

93.42% OF ALL EXPORTS

- 0 01. China
- 0 02. Japan
- 0 03. South Korea
- 0 04. Australia
- 0 05. Taiwan
- 0 06. Vietnam
- 0 07. Hong Kong
- 1 ▲ 08. Malaysia
- 2 ▲ 09. Thailand
- 2 ▼ 10. Singapore
- 1 ▼ 11. Indonesia
- 0 12. Philippines
- 0 13. India
- 0 14. Netherlands
- 1 ▲ 15. Germany
- 1 ▼ 16. New Zealand
- 1 ▲ 17. Belgium
- 1 ▼ 18. United Kingdom
- 0 19. United Arab Emirates
- 1 ▲ 20. Chile
- 1 ▲ 21. Mexico
- 2 ▼ 22. Saudi Arabia
- 6 ▲ 23. Peru
- 0 24. France
- 2 ▼ 25. Pakistan

TOP 25 IMPORT PARTNERS

96.18% OF ALL IMPORTS

- 0 01. China
- 1 ▲ 02. Vietnam
- 1 ▼ 03. Japan
- 0 04. Taiwan
- 0 05. South Korea
- 0 06. Thailand
- 0 07. Indonesia
- 0 08. Malaysia
- 0 09. Cambodia
- 0 10. Philippines
- 0 11. India
- 3 ▲ 12. Brazil
- 0 13. Ecuador
- 2 ▼ 14. Germany
- 1 ▼ 15. Italy
- 1 ▲ 16. Singapore
- 1 ▲ 17. Mexico
- 2 ▼ 18. Bangladesh
- 0 19. Iraq
- 4 ▲ 20. Saudi Arabia
- 1 ▼ 21. Australia
- 27 ▲ 22. Guyana
- 9 ▲ 23. Russia
- 3 ▼ 24. Colombia
- 3 ▼ 25. Chile

TOP 20 PORTS

KEY



Seaport



Airport



Border

Circle size represents total trade



Chicago O'Hare Int'l
\$304.99 BILLION

62.96%
OF ALL U.S. TRADE

KEY

- ▲ Ranking increased 2020 to 2021
- ▼ Ranking decreased 2020 to 2021

Rank change

- 1 ▲ 01. O'Hare Int'l Airport
- 1 ▼ 02. Port of Los Angeles
- 1 ▲ 03. Port Laredo
- 1 ▼ 04. JFK International Airport
- 0 05. Port of Newark/Liberty National
- 1 ▲ 06. Port of Houston
- 1 ▼ 07. Detroit Ambassador Bridge
- 0 08. Port of New Orleans/New Orleans Int'l
- 0 09. Los Angeles Int'l Airport
- 0 10. Port of Savannah
- 1 ▲ 11. Port Huron Blue Water Bridge
- 1 ▼ 12. Port of Long Beach
- 3 ▲ 13. Port of Virginia
- 1 ▼ 14. Port of Charleston
- 0 15. Buffalo Peace Bridge
- 2 ▼ 16. Cleveland Int'l Airport
- 0 17. Low-Value Shipments
- 0 18. Anchorage Int'l Airport
- 0 19. San Francisco Int'l Airport
- 1 ▲ 20. Miami Int'l Airport

The Port of Los Angeles and Port of Long Beach

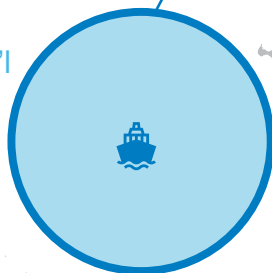
are combined on the map to more accurately reflect the trade that occurs at the two seaports. U.S. Census Bureau data undercounts Long Beach imports, crediting those to the Port of Los Angeles.



San Fran Int'l
\$70.55B



Los Angeles Int'l
\$139.29B



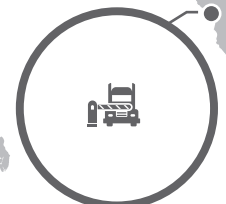
L.A.-Long Beach
\$400.60B

\$79.45B

Low-Value Shipments



Anchorage Int'l
\$72.29B



Port Laredo
\$248.50B

CHART OF
TOP 50 ports,
MORE DETAILS,
PAGE
13

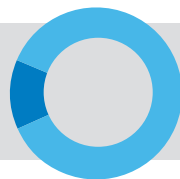
TOTAL TRADE IN BILLIONS
\$400.60
 13.92% ▲

EXPORTS IN BILLIONS
\$53.87
 -6.23% ▼

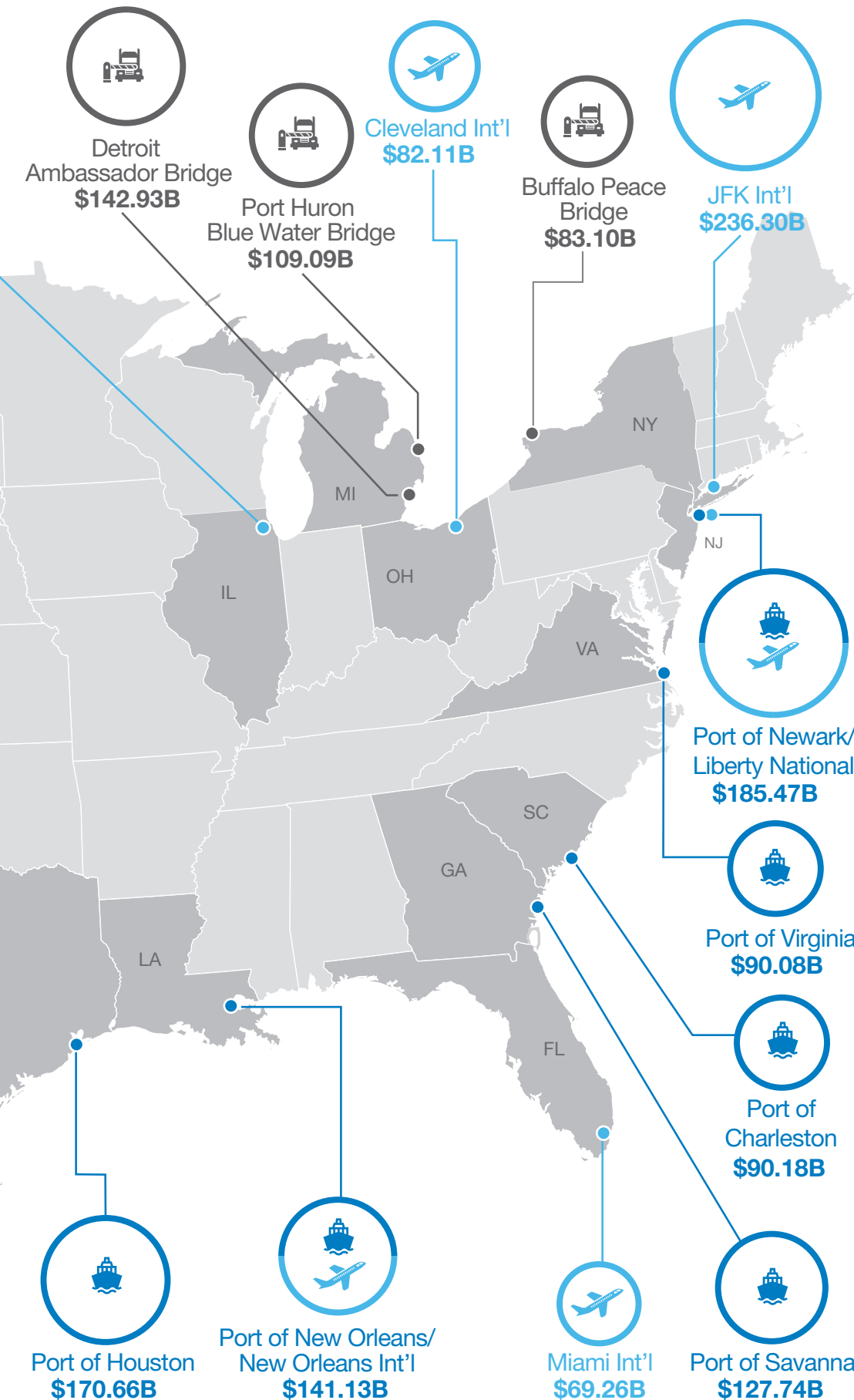
IMPORTS IN BILLIONS
\$346.73
 17.85% ▲

DEFICIT IN BILLIONS
-\$292.85

TRADE BALANCE
13%
 EXPORTS



87%
 IMPORTS



TOP 20 PORTS FOR EXPORTS

61.37% OF ALL U.S. EXPORTS

Rank change

- 1 ▲ 01. JFK Int'l Airport
- 1 ▼ 02. Port Laredo
- 0 03. Port of Houston
- 1 ▲ 04. Port of New Orleans/ New Orleans Int'l
- 1 ▼ 05. Detroit Ambassador Bridge
- 0 06. Chicago O'Hare Int'l Airport
- 0 07. Low-Value Exports
- 0 08. Los Angeles Int'l Airport
- 3 ▲ 09. Port of Corpus Christi
- 0 10. Port Huron Blue Water Bridge
- 2 ▼ 11. Cleveland Int'l Airport
- 1 ▼ 12. Buffalo Peace Bridge
- 1 ▲ 13. Miami Int'l Airport
- 1 ▼ 14. San Francisco Int'l Airport
- 1 ▲ 15. Port of New York
- 4 ▲ 16. Port of Virginia
- 2 ▲ 17. Port of Savannah
- 3 ▼ 18. Port of Charleston
- 1 ▼ 19. Port of Los Angeles
- 3 ▼ 20. Port of Long Beach

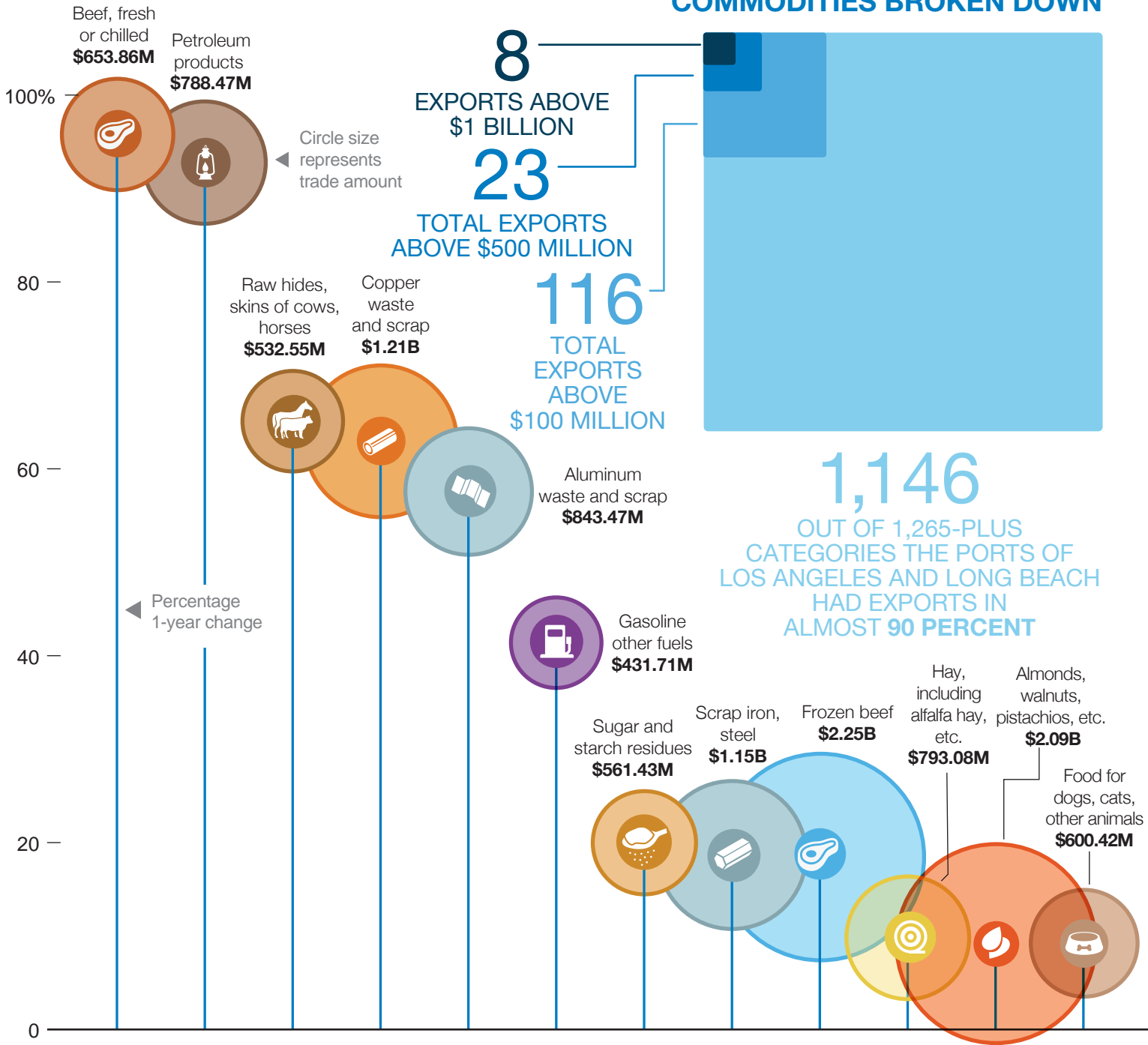
TOP 20 PORTS FOR IMPORTS

66.98% OF ALL U.S. IMPORTS

Rank change

- 0 01. Port of Los Angeles
- 0 02. O'Hare Int'l Airport
- 0 03. Port of Newark/Liberty National
- 1 ▲ 04. Port Laredo
- 1 ▼ 05. JFK Int'l Airport
- 0 06. Port of Savannah
- 0 07. Los Angeles Int'l Airport
- 0 08. Port of Long Beach
- 2 ▲ 09. Port of Houston
- 1 ▼ 10. Detroit Ambassador Bridge
- 1 ▼ 11. Port of New Orleans
- 0 12. Port of Charleston
- 1 ▲ 13. Port of Virginia
- 1 ▼ 14. Port Huron Blue Water Bridge
- 0 15. Anchorage Int'l Airport
- 1 ▲ 16. Port of Baltimore
- 6 ▲ 17. Ysleta Int'l Bridge
- 2 ▼ 18. Atlanta Int'l Airport
- 0 19. Buffalo Peace Bridge
- 1 ▲ 20. Cleveland Int'l Airport

COMMODITIES BROKEN DOWN



8
EXPORTS ABOVE
\$1 BILLION

23
TOTAL EXPORTS
ABOVE \$500 MILLION

116
TOTAL EXPORTS
ABOVE
\$100 MILLION

1,146
OUT OF 1,265-PLUS
CATEGORIES THE PORTS OF
LOS ANGELES AND LONG BEACH
HAD EXPORTS IN
ALMOST 90 PERCENT

-6.23%
OVERALL
DECREASE
IN 2021

13%

PERCENTAGE OF PORT OF LOS ANGELES
AND PORT OF LONG BEACH TRADE
THAT WAS AN EXPORT

TOTAL EXPORTS
\$53.87
BILLION

1-YEAR CHANGE
-6.23%

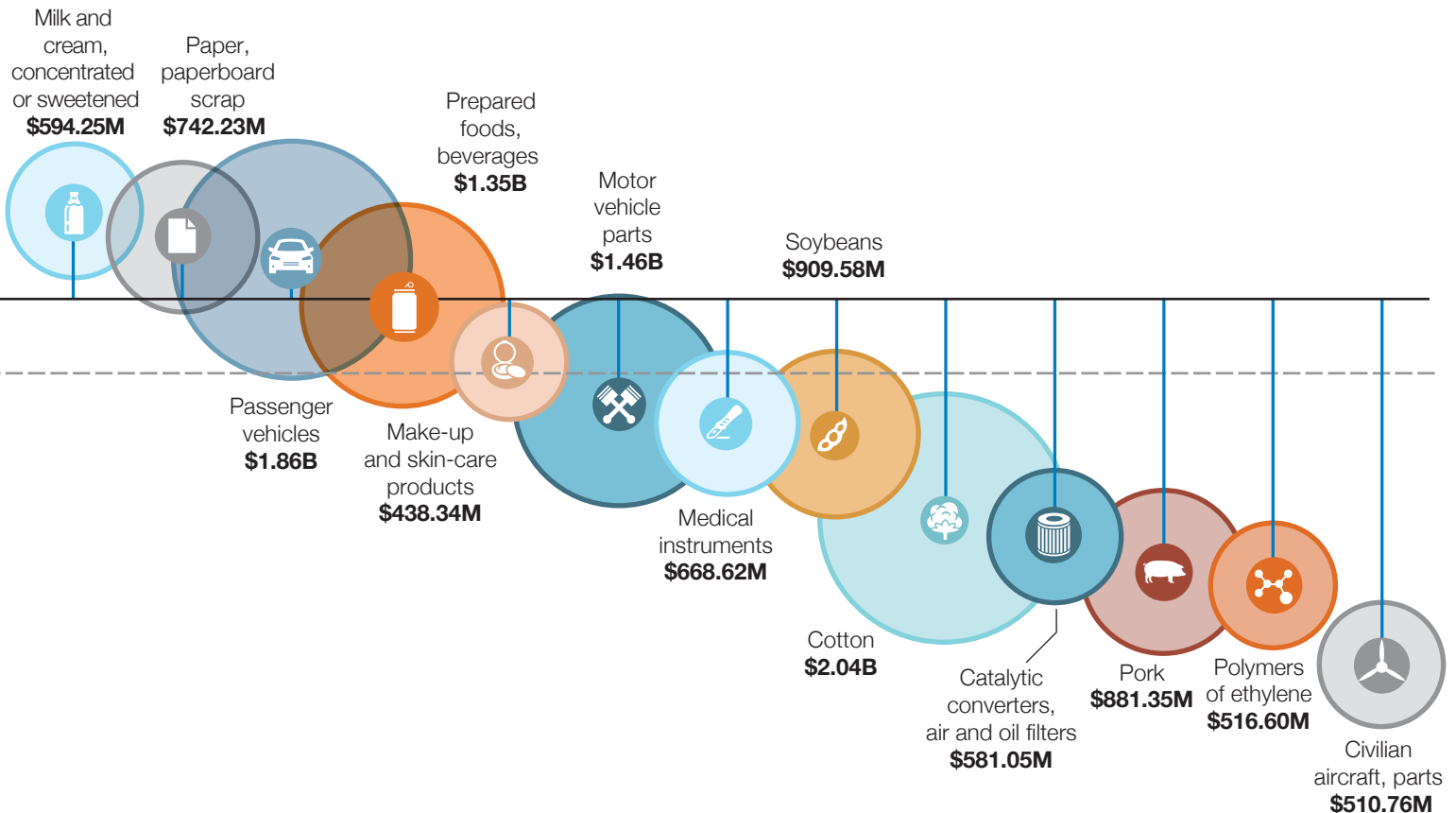
TOP 25 EXPORTS REPRESENT
45.41%
OF ALL EXPORTS

CHART OF TOP 50 EXPORTS,
PAGE 14

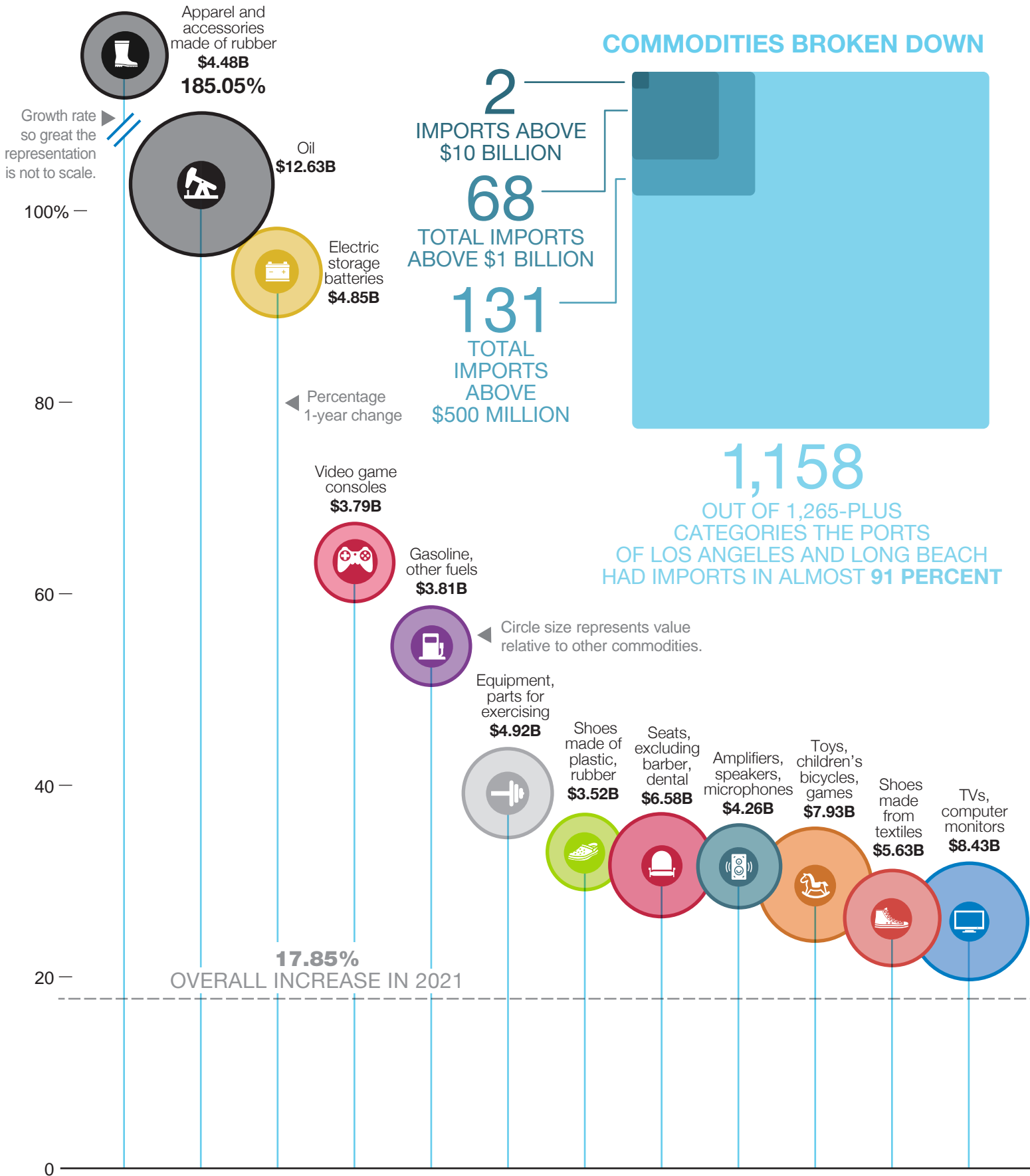
2021 | SAN PEDRO BAY'S TOP 25 EXPORTS

THE PACE OF CHANGE FIFTEEN OF TOP 25 EXPORTS INCREASED, 10 DECREASED

Overall, San Pedro Bay exports declined \$3.58 billion in value in 2021 when compared to 2020, according to Census Bureau data. Despite the 6.23 percent decrease overall, five top 25 exports increased by more than 50 percent, when compared to 2020. Four exports decreased more than 20 percent.



COMMODITIES BROKEN DOWN



TOTAL
IMPORTS
\$346.73
BILLION

1-YEAR CHANGE
17.85%

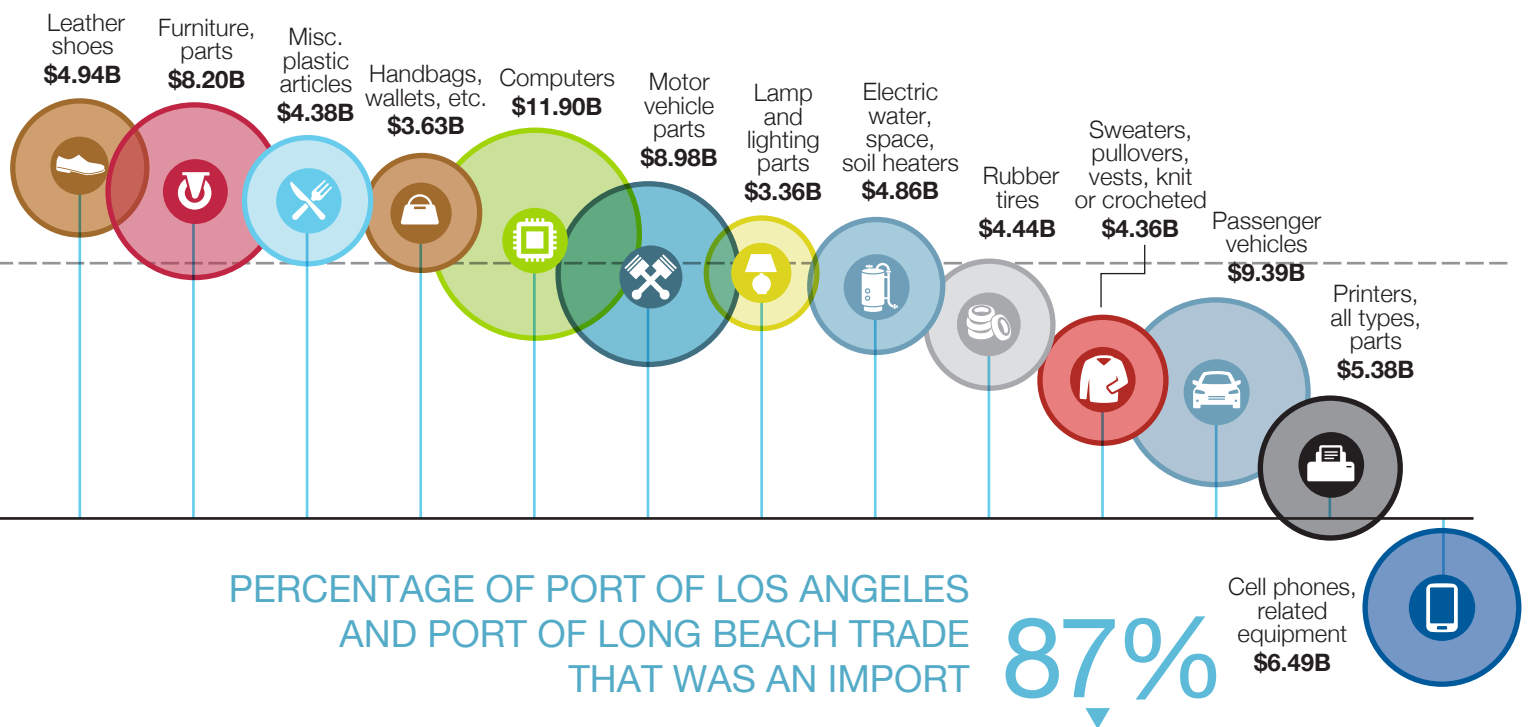
TOP 25 IMPORTS
REPRESENT
43.59%
OF ALL IMPORTS

CHART OF TOP
50 IMPORTS,
PAGE 15

2021 | SAN PEDRO BAY'S TOP 25 IMPORTS

THE PACE OF CHANGE OF THE TOP 25 IMPORTS, 24 INCREASED IN 2021

Overall, San Pedro Bay imports increased \$52.52 billion in value in 2021 when compared to 2020, according to Census Bureau data. The value of two imports more than doubled and another three increased more than 50 percent. Only cell phones and related equipment decreased in value, when compared to 2020.



Top 50 San Pedro Bay Trade Partners

1-YR CHG	2021 RANK	COUNTRY	TOTAL TRADE 2021	TOTAL TRADE 2020	CHANGE	TOTAL EXPORTS 2021	TOTAL EXPORTS 2020	CHANGE	TOTAL IMPORTS 2021	TOTAL IMPORTS 2020	CHANGE	SURPLUS/(DEFICIT) 2021
		World Total	\$400,596,753,262	\$351,651,888,157	13.92%	\$53,871,469,026	\$57,448,627,385	-6.23%	\$346,725,284,236	\$294,203,260,772	17.85%	(\$292,853,815,210)
0	1	China	\$180,214,653,489	\$157,158,620,538	14.67%	\$13,963,321,829	\$13,885,729,354	0.56%	\$166,251,331,660	\$143,272,891,184	16.04%	(\$152,288,009,831)
0	2	Japan	\$39,873,454,229	\$37,587,062,286	6.08%	\$6,995,029,592	\$7,557,409,530	-7.44%	\$32,878,424,637	\$30,029,652,756	9.49%	(\$25,883,395,045)
0	3	Vietnam	\$37,209,490,965	\$30,921,716,144	20.33%	\$2,231,733,001	\$2,294,946,524	-2.75%	\$34,977,757,964	\$28,626,769,620	22.19%	(\$32,746,024,963)
0	4	Taiwan	\$22,809,497,179	\$20,664,440,125	10.38%	\$3,590,365,138	\$3,631,880,936	-1.14%	\$19,219,132,041	\$17,032,559,189	12.84%	(\$15,628,766,903)
0	5	South Korea	\$21,650,432,103	\$19,673,733,144	10.05%	\$6,577,438,877	\$6,924,670,847	-5.01%	\$15,072,993,226	\$12,749,062,297	18.23%	(\$8,495,554,349)
0	6	Thailand	\$14,848,854,796	\$12,444,401,464	19.32%	\$1,301,994,415	\$1,216,309,207	7.04%	\$13,546,860,381	\$11,228,092,257	20.65%	(\$12,244,865,966)
0	7	Indonesia	\$9,113,488,235	\$8,021,273,244	13.62%	\$1,060,605,027	\$1,276,601,082	-16.92%	\$8,052,883,208	\$6,744,672,162	19.40%	(\$6,992,278,181)
0	8	Malaysia	\$8,704,511,829	\$6,929,923,365	25.61%	\$1,318,176,556	\$1,295,082,395	1.78%	\$7,386,335,273	\$5,634,840,970	31.08%	(\$6,068,158,717)
0	9	Australia	\$5,467,843,606	\$6,294,665,416	-13.14%	\$4,133,492,605	\$4,975,025,362	-16.92%	\$1,334,351,001	\$1,319,640,054	1.11%	\$2,799,141,604
0	10	Philippines	\$4,598,885,544	\$3,998,664,500	15.01%	\$1,028,159,887	\$987,196,399	4.15%	\$3,570,725,657	\$3,011,468,101	18.57%	(\$2,542,565,770)
1	11	Cambodia	\$4,385,383,359	\$3,478,997,332	26.05%	\$138,993,664	\$135,262,686	2.76%	\$4,246,389,695	\$3,343,734,646	27.00%	(\$4,107,396,031)
-1	12	India	\$4,163,773,689	\$3,639,381,740	14.41%	\$802,375,743	\$721,106,271	11.27%	\$3,361,397,946	\$2,918,275,469	15.18%	(\$2,559,022,203)
6	13	Brazil	\$3,450,641,958	\$1,688,646,359	104.34%	\$150,873,965	\$178,402,948	-15.43%	\$3,299,767,993	\$1,510,243,411	118.49%	(\$3,148,894,028)
2	14	Ecuador	\$3,241,590,440	\$1,929,385,282	68.01%	\$65,026,884	\$44,047,131	47.63%	\$3,176,563,556	\$1,885,338,151	68.49%	(\$3,111,536,672)
-2	15	Germany	\$3,204,908,093	\$3,257,583,456	-1.62%	\$593,931,926	\$616,947,948	-3.73%	\$2,610,976,167	\$2,640,635,508	-1.12%	(\$2,017,044,241)
-2	16	Singapore	\$2,875,976,204	\$2,950,017,184	-2.51%	\$1,069,035,402	\$1,487,849,222	-28.15%	\$1,806,940,802	\$1,462,167,962	23.58%	(\$737,905,400)
0	17	Mexico	\$2,128,412,448	\$1,756,682,572	21.16%	\$324,385,288	\$323,720,209	0.21%	\$1,804,027,160	\$1,432,962,363	25.89%	(\$1,479,641,872)
-3	18	Hong Kong	\$2,079,007,316	\$2,267,449,999	-8.31%	\$1,707,349,332	\$1,905,775,245	-10.41%	\$371,657,984	\$361,674,754	2.76%	\$1,335,691,348
1	19	Bangladesh	\$1,951,645,076	\$1,658,203,168	17.70%	\$148,556,499	\$173,249,669	-14.25%	\$1,803,088,577	\$1,484,953,499	21.42%	(\$1,654,532,078)
-2	20	Italy	\$1,942,301,570	\$1,743,072,565	11.43%	\$123,451,026	\$211,787,037	-41.71%	\$1,818,850,544	\$1,531,285,528	18.78%	(\$1,695,399,518)
6	21	Saudi Arabia	\$1,671,755,152	\$982,099,696	70.22%	\$286,016,381	\$373,793,636	-23.48%	\$1,385,738,771	\$608,306,060	127.80%	(\$1,099,722,390)
0	22	Iraq	\$1,480,035,220	\$1,439,767,278	2.80%	\$18,380,504	\$23,768,451	-22.67%	\$1,461,654,716	\$1,415,998,827	3.22%	(\$1,443,274,212)
-2	23	New Zealand	\$1,305,921,782	\$1,460,111,262	-10.56%	\$589,831,550	\$666,736,839	-11.53%	\$716,090,232	\$793,374,423	-9.74%	(\$126,258,682)
27	24	Guyana	\$1,294,953,247	\$193,744,093	568.38%	\$1,323,164	\$3,457,916	-61.74%	\$1,293,630,083	\$190,286,177	579.83%	(\$1,292,306,919)
0	25	Colombia	\$1,272,111,236	\$1,047,007,455	21.50%	\$122,386,271	\$113,855,997	7.49%	\$1,149,724,965	\$933,151,458	23.21%	(\$1,027,338,694)
10	26	Russia	\$1,252,339,978	\$538,970,539	132.36%	\$85,578,692	\$77,573,723	10.32%	\$1,166,761,286	\$461,396,816	152.88%	(\$1,081,182,594)
-4	27	Netherlands	\$1,144,674,912	\$1,211,906,186	-5.55%	\$617,072,797	\$667,647,928	-7.58%	\$527,602,115	\$544,258,258	-3.06%	\$89,470,682
-4	28	Chile	\$1,118,790,862	\$1,134,272,744	-1.36%	\$325,552,000	\$326,294,152	-0.23%	\$793,238,862	\$807,978,592	-1.82%	(\$467,686,862)
-1	29	France	\$878,491,270	\$818,082,566	7.38%	\$187,707,673	\$234,772,537	-20.05%	\$690,783,597	\$583,310,029	18.42%	(\$503,075,924)
-4	30	United Kingdom	\$866,103,782	\$1,045,876,409	-17.19%	\$374,080,895	\$548,905,828	-31.85%	\$492,022,887	\$496,970,581	-1.00%	(\$117,941,992)
2	31	United Arab Emirates	\$844,354,628	\$677,729,058	24.59%	\$363,215,439	\$439,507,493	-17.36%	\$481,139,189	\$238,221,565	101.97%	(\$117,923,750)
0	32	Spain	\$747,529,629	\$698,477,473	7.02%	\$155,198,855	\$215,483,257	-27.98%	\$592,330,774	\$482,994,216	22.64%	(\$437,131,919)
-2	33	Peru	\$687,813,152	\$711,067,864	-3.27%	\$220,452,512	\$173,605,978	26.98%	\$467,360,640	\$537,461,886	-13.04%	(\$246,908,128)
-4	34	Belgium	\$686,349,301	\$719,157,866	-4.56%	\$482,927,921	\$484,646,874	-0.35%	\$203,421,380	\$234,510,992	-13.26%	\$279,506,541
-6	35	Pakistan	\$672,378,959	\$771,422,585	-12.84%	\$184,049,971	\$304,465,911	-39.55%	\$488,328,988	\$466,956,674	4.58%	(\$304,279,017)
-1	36	Austria	\$644,194,747	\$622,213,453	3.53%	\$20,687,101	\$26,780,749	-22.75%	\$623,507,646	\$595,432,704	4.72%	(\$602,820,545)
16	37	Canada	\$621,149,139	\$184,030,848	237.52%	\$87,704,174	\$1,955,905	4,384.07%	\$533,444,965	\$182,074,943	192.98%	(\$445,740,791)
-1	38	Turkey	\$614,952,942	\$522,176,855	17.77%	\$104,854,724	\$84,759,717	23.71%	\$510,098,218	\$437,417,138	16.62%	(\$405,243,494)
9	39	Finland	\$402,185,780	\$205,173,343	96.02%	\$9,923,923	\$8,228,138	20.61%	\$392,261,857	\$196,945,205	99.17%	(\$382,337,934)
0	40	Switzerland	\$400,728,460	\$417,755,645	-4.08%	\$35,551,762	\$40,545,728	-12.32%	\$365,176,698	\$377,209,917	-3.19%	(\$329,624,936)
-2	41	Guatemala	\$380,741,276	\$456,483,952	-16.59%	\$107,804,797	\$151,323,703	-28.76%	\$272,936,479	\$305,160,249	-10.56%	(\$165,131,682)
-1	42	Sri Lanka	\$380,210,259	\$369,293,215	2.96%	\$48,854,260	\$41,441,179	17.89%	\$331,355,999	\$327,852,036	1.07%	(\$282,501,739)
-1	43	Norway	\$374,771,965	\$322,895,874	16.07%	\$28,746,915	\$28,371,458	1.32%	\$346,025,050	\$294,524,416	17.49%	(\$317,278,135)
-1	44	South Africa	\$362,537,417	\$314,993,164	15.09%	\$61,543,221	\$59,290,334	3.80%	\$300,994,196	\$255,702,830	17.71%	(\$239,450,975)
1	45	Argentina	\$354,149,061	\$298,239,082	18.75%	\$43,157,267	\$42,671,916	1.14%	\$310,991,794	\$255,567,166	21.69%	(\$267,834,527)
-8	46	Burma	\$349,502,221	\$513,112,687	-31.89%	\$27,196,431	\$98,909,332	-72.50%	\$322,305,790	\$414,203,355	-22.19%	(\$295,109,359)
11	47	Nigeria	\$338,438,706	\$148,712,267	127.58%	\$36,716,120	\$32,425,827	13.23%	\$301,722,586	\$116,286,440	159.46%	(\$265,006,466)
-3	48	Israel	\$335,849,163	\$311,819,603	7.71%	\$87,801,433	\$87,716,357	0.10%	\$248,047,730	\$224,103,246	10.68%	(\$160,246,297)
-15	49	Nicaragua	\$331,521,266	\$629,405,995	-47.33%	\$120,856,701	\$219,202,380	-44.87%	\$210,664,565	\$410,203,615	-48.64%	(\$89,807,864)
-3	50	Poland	\$275,072,650	\$251,131,100	9.53%	\$56,434,124	\$60,425,029	-6.60%	\$218,638,526	\$190,706,071	14.65%	(\$162,204,402)

Source: WorldCity analysis of U.S. Census Bureau data

Top 50 U.S. Ports

1-YR CHNG RANK	2021 PORT	TOTAL TRADE 2021	TOTAL TRADE 2020	CHANGE	TOTAL EXPORTS 2021	TOTAL EXPORTS 2020	CHANGE	TOTAL IMPORTS 2021	TOTAL IMPORTS 2020	CHANGE	SURPLUS/ (DEFICIT) 2021
	World Total	\$4,586,815,373,447	\$3,767,984,637,684	21.73%	\$1,753,941,405,889	\$1,431,405,492,962	22.53%	\$2,832,873,967,558	\$2,336,579,144,722	21.24%	(\$1,078,932,561,669)
1	1 Chicago O'Hare International Airport	\$304,989,922,134	\$242,618,059,858	25.71%	\$64,708,844,704	\$53,382,611,910	21.22%	\$240,281,077,430	\$189,235,447,948	26.97%	(\$175,572,232,726)
-1	2 Port of Los Angeles	\$296,720,609,851	\$260,207,117,901	14.03%	\$27,001,759,381	\$28,543,954,573	-5.40%	\$269,718,850,470	\$231,663,163,328	16.43%	(\$242,717,091,089)
1	3 Port Laredo	\$248,500,748,716	\$205,875,226,937	20.70%	\$99,118,568,947	\$80,006,632,411	23.89%	\$149,382,179,769	\$125,868,594,526	18.68%	(\$50,263,610,822)
-1	4 John F. Kennedy International Airport	\$236,304,584,806	\$217,054,497,047	8.87%	\$105,053,271,549	\$79,273,777,987	32.52%	\$131,251,313,257	\$137,780,719,060	-4.74%	(\$26,198,041,708)
0	5 Port of Newark	\$228,542,478,645	\$185,465,190,406	23.23%	\$19,420,177,563	\$15,261,651,024	27.25%	\$209,122,301,082	\$170,203,539,382	22.87%	(\$189,702,123,519)
1	6 Port of Houston	\$170,659,226,655	\$126,549,019,470	34.86%	\$94,759,728,592	\$74,035,305,167	27.99%	\$75,899,498,063	\$52,513,714,303	44.53%	\$18,860,230,529
-1	7 Detroit Ambassador Bridge	\$142,927,457,052	\$129,580,757,073	10.30%	\$75,320,866,706	\$67,193,453,043	12.10%	\$67,606,590,346	\$62,387,304,030	8.37%	\$7,714,276,360
0	8 Port of New Orleans	\$141,132,408,115	\$121,910,301,692	15.77%	\$80,424,833,371	\$65,464,583,617	22.85%	\$60,707,574,744	\$56,445,718,075	7.55%	\$19,717,258,627
0	9 Los Angeles International Airport	\$139,292,214,797	\$118,111,998,893	17.93%	\$56,761,625,022	\$48,851,385,004	16.19%	\$82,530,589,775	\$69,260,613,889	19.16%	(\$25,768,964,753)
0	10 Port of Savannah	\$127,737,413,026	\$104,666,626,555	22.04%	\$30,218,813,572	\$27,943,965,856	8.14%	\$97,518,599,454	\$76,722,660,699	27.11%	(\$67,299,785,882)
1	11 Port Huron Blue Water Bridge, Mich.	\$109,090,312,146	\$85,429,416,817	27.70%	\$48,897,976,884	\$38,856,789,835	25.84%	\$60,192,335,262	\$46,572,626,982	29.24%	(\$11,294,358,378)
-1	12 Port of Long Beach	\$103,876,143,411	\$91,793,730,723	13.16%	\$26,869,709,645	\$28,991,938,680	-7.32%	\$77,006,433,766	\$62,801,792,043	22.62%	(\$50,136,724,121)
3	13 Port of Virginia	\$90,977,183,781	\$68,998,139,421	31.85%	\$30,727,694,514	\$24,468,479,928	25.58%	\$60,249,489,267	\$44,529,659,493	35.30%	(\$29,521,794,753)
-1	14 Port of Charleston	\$90,183,446,714	\$78,347,997,882	15.11%	\$29,916,848,278	\$30,173,454,001	-0.85%	\$60,266,598,436	\$48,174,543,881	25.10%	(\$30,349,750,158)
0	15 Buffalo Peace Bridge, N.Y.	\$83,102,872,453	\$70,396,165,454	18.05%	\$42,474,603,816	\$36,712,152,082	15.70%	\$40,628,268,637	\$33,684,013,372	20.62%	\$1,846,335,179
-2	16 Cleveland's Hopkins International Airport	\$82,112,275,995	\$70,817,464,044	15.95%	\$43,752,276,770	\$39,977,136,076	9.44%	\$38,359,999,225	\$30,840,327,968	24.38%	\$5,392,277,545
0	17 Low-Value Shipments	\$79,450,495,468	\$66,904,051,103	18.75%	\$59,692,480,046	\$49,426,622,388	20.77%	\$19,758,015,422	\$17,477,428,715	13.05%	\$39,934,464,624
0	18 Anchorage International Airport	\$72,289,221,798	\$60,118,315,283	20.24%	\$25,117,956,885	\$19,391,742,366	29.53%	\$47,171,264,913	\$40,726,572,917	15.82%	(\$22,053,308,028)
0	19 San Francisco International Airport	\$70,547,257,954	\$59,044,532,844	19.48%	\$38,398,022,963	\$32,413,041,986	18.46%	\$32,149,234,991	\$26,631,490,858	20.72%	\$6,248,787,972
1	20 Miami International Airport	\$69,262,370,884	\$53,440,406,868	29.61%	\$39,652,751,526	\$31,348,025,903	26.49%	\$29,609,619,358	\$22,092,380,965	34.03%	\$10,043,132,168
5	21 Ysleta, Texas	\$64,520,850,854	\$42,641,877,751	51.31%	\$21,086,253,951	\$13,799,650,675	52.80%	\$43,434,596,903	\$28,842,227,076	50.59%	(\$22,348,342,952)
-2	22 Hartsfield-Jackson Atlanta International Airport	\$63,619,490,870	\$54,555,509,426	16.61%	\$21,658,163,279	\$15,490,247,726	39.82%	\$41,961,327,591	\$39,065,261,700	7.41%	(\$20,303,164,312)
0	23 Dallas-Fort Worth International Airport	\$61,373,004,382	\$50,057,849,678	22.60%	\$25,871,595,703	\$22,211,976,970	16.48%	\$35,501,408,679	\$27,845,872,708	27.49%	(\$9,629,812,976)
0	24 Port of Baltimore	\$61,333,233,726	\$49,627,181,780	23.59%	\$17,031,281,571	\$12,680,931,454	34.31%	\$44,301,952,155	\$36,946,250,326	19.91%	(\$27,270,670,584)
4	25 Port of Corpus Christi	\$56,777,686,156	\$36,535,659,013	55.40%	\$51,531,201,490	\$32,576,292,772	58.19%	\$5,246,484,666	\$3,959,366,241	32.51%	\$46,284,716,824
-1	26 Otay Mesa Freeway Border Crossing, Calif.	\$55,422,860,778	\$46,002,459,223	20.48%	\$18,723,279,278	\$15,056,544,441	24.35%	\$36,699,581,500	\$30,945,914,782	18.59%	(\$17,976,302,222)
-5	27 Port of Oakland	\$50,292,744,548	\$50,813,130,143	-1.02%	\$20,836,610,709	\$20,681,742,832	0.75%	\$29,456,133,839	\$30,131,387,311	-2.24%	(\$8,619,523,130)
0	28 Port of New York	\$45,008,137,768	\$38,692,916,850	16.32%	\$31,136,241,476	\$29,618,477,386	5.12%	\$13,871,896,292	\$9,074,439,464	52.87%	\$17,264,345,184
-2	29 Port of Tacoma, Wash.	\$44,545,402,622	\$40,978,204,567	8.71%	\$7,906,180,497	\$7,144,347,561	10.66%	\$36,639,222,125	\$33,833,857,006	8.29%	(\$28,733,041,628)
0	30 Pharr International Bridge	\$41,774,752,054	\$33,051,301,745	26.39%	\$16,508,515,337	\$11,478,762,335	43.82%	\$25,266,236,717	\$21,572,539,410	17.12%	(\$8,577,721,380)
2	31 Port of Philadelphia	\$34,149,206,867	\$27,430,886,814	24.49%	\$5,486,221,053	\$4,051,334,017	35.42%	\$28,662,985,814	\$23,379,552,797	22.60%	(\$23,176,764,761)
0	32 Eagle Pass	\$33,823,936,490	\$28,131,729,177	20.23%	\$10,477,712,033	\$7,570,882,949	38.39%	\$23,346,224,457	\$20,560,846,228	13.55%	(\$12,868,512,424)
1	33 Port of Seattle	\$31,599,636,711	\$25,728,627,843	22.82%	\$8,978,449,902	\$8,306,290,922	8.09%	\$22,621,186,809	\$17,422,336,921	29.84%	(\$13,642,736,907)
4	34 Pembina Border Crossing, N.D.	\$30,025,669,326	\$23,270,855,185	29.03%	\$15,967,419,906	\$12,177,059,688	31.13%	\$14,058,249,420	\$11,093,795,497	26.72%	\$1,909,170,486
2	35 Blaine / Surrey Border Crossing, Wash.	\$30,023,099,222	\$23,529,846,353	27.60%	\$14,227,727,396	\$12,265,991,578	15.99%	\$15,795,371,826	\$11,263,854,775	40.23%	(\$1,567,644,430)
-1	36 Rouses Point / Lacolle Border Crossing, N.Y.	\$29,359,667,375	\$24,240,773,067	21.12%	\$9,984,525,726	\$9,026,775,594	10.61%	\$19,375,141,649	\$15,213,997,473	27.35%	(\$9,390,615,923)
2	37 PortMiami	\$28,653,516,368	\$22,543,418,696	27.10%	\$10,227,072,946	\$7,942,420,133	28.77%	\$18,426,443,422	\$14,600,998,563	26.20%	(\$8,199,370,476)
-2	38 Santa Teresa Border Crossing, N.M.	\$27,386,341,466	\$24,001,435,295	14.10%	\$11,567,337,905	\$9,917,815,982	16.63%	\$15,819,003,561	\$14,083,619,313	12.32%	(\$4,251,665,656)
7	39 Seattle-Tacoma International Airport	\$26,771,574,377	\$16,132,255,120	65.95%	\$18,598,159,639	\$9,364,803,906	98.60%	\$8,173,414,738	\$6,767,451,214	20.78%	\$10,424,744,901
0	40 Nogales Border Crossing, Ariz.	\$25,138,552,833	\$22,413,360,403	12.16%	\$9,900,609,389	\$8,478,563,440	16.77%	\$15,237,943,444	\$13,934,796,963	9.35%	(\$5,337,334,055)
-10	41 El Paso Bridge of the Americas	\$24,437,840,171	\$29,980,326,994	-18.49%	\$15,728,907,958	\$15,190,524,591	3.54%	\$8,708,932,213	\$14,789,802,403	-41.12%	\$7,019,975,745
1	42 Port Everglades, Fla.	\$24,185,946,118	\$18,789,628,243	28.72%	\$11,788,898,301	\$9,659,268,693	22.05%	\$12,397,047,817	\$9,130,359,550	35.78%	(\$608,149,516)
-2	43 Port of Jacksonville, Fla.	\$23,477,533,995	\$21,830,581,775	7.54%	\$6,366,720,895	\$5,153,969,995	23.53%	\$17,110,813,100	\$16,676,611,780	2.60%	(\$10,744,092,205)
-2	44 Port of Brunswick, Ga.	\$22,708,690,397	\$18,979,922,599	19.65%	\$9,100,993,328	\$7,237,553,761	25.75%	\$13,607,697,069	\$11,742,368,838	15.89%	(\$4,506,703,741)
-1	45 Brownsville International Bridges	\$22,399,992,849	\$17,378,770,967	28.89%	\$12,520,590,924	\$8,483,748,089	47.58%	\$9,879,401,925	\$8,895,022,878	11.07%	\$2,641,188,999
4	46 Port Arthur	\$22,086,117,839	\$11,125,115,716	98.52%	\$11,269,349,699	\$5,364,800,680	110.06%	\$10,816,768,140	\$5,760,315,036	87.78%	\$452,581,559
1	47 Port of Mobile	\$21,360,843,762	\$15,232,203,514	40.23%	\$5,054,537,476	\$3,716,333,482	36.01%	\$16,306,306,286	\$11,515,870,032	41.60%	(\$11,251,768,810)
-3	48 Port of Alexandria Bay, N.Y.	\$20,339,384,909	\$16,321,744,938	24.62%	\$8,507,172,896	\$6,731,591,329	26.38%	\$11,832,212,013	\$9,590,153,609	23.38%	(\$3,325,039,117)
-2	49 Calexico/Mexicali (East) Border Crossing, Calif.	\$19,404,336,425	\$15,791,318,893	22.88%	\$7,106,861,604	\$5,531,339,370	28.48%	\$12,297,474,821	\$10,259,979,523	19.86%	(\$5,190,613,217)
2	50 Dulles International Airport, Va.	\$19,001,385,125	\$14,081,417,358	34.94%	\$7,283,054,606	\$4,552,911,027	59.96%	\$11,718,330,519	\$9,528,506,331	22.98%	(\$4,435,275,913)

Source: WorldCity analysis of U.S. Census Bureau data

Top 50 San Pedro Bay Export Commodities

1-YEAR CHANGE	2021 RANK		2021	2020	ONE-YEAR CHANGE
		Total, All Exports	\$53,871,469,026	\$57,448,627,385	-6.23%
2	1	Frozen beef	\$2,248,843,691	\$1,900,759,794	18.31%
0	2	Almonds, walnuts, pistachios, hazelnuts, etc.	\$2,085,921,758	\$1,909,299,720	9.25%
-2	3	Cotton	\$2,043,806,435	\$2,505,368,629	-18.42%
0	4	Passenger vehicles	\$1,863,072,065	\$1,803,620,608	3.30%
0	5	Motor vehicle parts	\$1,456,209,894	\$1,597,107,023	-8.82%
0	6	Prepared foods, beverages	\$1,347,419,221	\$1,362,281,180	-1.09%
4	7	Copper waste and scrap	\$1,214,122,198	\$746,091,218	62.73%
1	8	Scrap iron, steel	\$1,153,749,596	\$972,760,158	18.61%
-1	9	Soybeans	\$909,583,870	\$1,031,334,699	-11.81%
-3	10	Pork	\$881,347,993	\$1,150,838,389	-23.42%
8	11	Aluminum waste and scrap	\$843,472,149	\$535,694,952	57.45%
2	12	Hay, including alfalfa hay, etc.	\$793,077,539	\$721,793,918	9.88%
14	13	Petroleum products	\$788,468,669	\$409,225,167	92.67%
1	14	Paper, paperboard scrap	\$742,234,767	\$705,031,582	5.28%
-5	15	Medical instruments	\$668,619,483	\$751,305,237	-11.01%
20	16	Beef, fresh or chilled	\$653,862,974	\$334,011,124	95.76%
1	17	Food for dogs, cats, other animals	\$600,422,582	\$550,890,542	8.99%
-1	18	Milk and cream, concentrated or sweetened	\$594,252,758	\$554,395,968	7.19%
-6	19	Catalytic converters, air and oil filters	\$581,045,951	\$727,368,501	-20.12%
2	20	Sugar and starch residues	\$561,430,250	\$468,759,700	19.77%
17	21	Raw hides, skins of cows, horses	\$532,546,651	\$322,942,807	64.90%
-6	22	Polymers of ethylene	\$516,603,974	\$687,156,777	-24.82%
-11	23	Civilian aircraft, parts	\$510,759,730	\$742,113,949	-31.18%
-1	24	Make-up and skin-care products	\$438,338,958	\$465,141,407	-5.76%
17	25	Gasoline, other refined petroleum	\$431,705,350	\$305,583,357	41.27%
5	26	Internal organs from animals	\$415,838,129	\$380,299,695	9.34%
2	27	Polyethers, epoxides and polyesters, primary forms	\$412,140,629	\$387,485,172	6.36%
-4	28	Plastic plates, sheet, film	\$363,049,068	\$458,619,534	-20.84%
15	29	Mechanized medical equipment	\$331,650,955	\$294,298,873	12.69%
-5	30	Engine parts	\$331,209,770	\$422,818,541	-21.67%
-11	31	Pumps for dispensing liquids	\$325,751,022	\$504,700,349	-35.46%
-6	32	Taps, cocks and valves for pipes, tanks	\$312,540,521	\$416,225,769	-24.91%
27	33	Fruit, nuts, prepared or preserved	\$311,014,433	\$204,215,945	52.30%
11	34	Citrus fruit	\$305,229,187	\$286,655,380	6.48%
39	35	Electric storage batteries	\$289,186,113	\$177,091,246	63.30%
19	36	Hydrogen, raw gases	\$288,228,216	\$231,742,238	24.37%
-5	37	Compressors and pumps	\$283,836,318	\$377,511,614	-24.81%
99	38	Compounds of yttrium	\$279,408,332	\$97,066,815	187.85%
-6	39	Binders for found molds; chemical products	\$276,717,988	\$374,810,088	-26.17%
0	40	Misc. organic cleansers, including soaps	\$275,295,892	\$306,433,584	-10.16%
7	41	Borates	\$271,101,110	\$266,236,615	1.83%
30	42	Cow or horse leather	\$270,101,195	\$177,132,241	52.49%
-9	43	Transmission shafts, bearings, gears	\$247,163,856	\$362,114,365	-31.74%
27	44	Chocolate and other food products containing cocoa	\$246,236,271	\$182,223,669	35.13%
19	45	Aircraft parts	\$244,495,029	\$191,730,129	27.52%
279	46	Iron ores and concentrates	\$240,715,474	\$21,300,051	1,030%
4	47	Sand-blasting, other liquid-dispersing equipment	\$239,851,874	\$259,864,306	-7.70%
2	48	Misc. plastic articles	\$239,665,149	\$262,962,600	-8.86%
-19	49	Parts for heavy machinery	\$232,553,055	\$381,315,842	-39.01%
35	50	Machining centers for metal work	\$211,251,938	\$157,947,214	33.75%

Source: WorldCity analysis of U.S. Census Bureau data

Top 50 San Pedro Bay Import Commodities

1-YEAR CHANGE	2021 RANK		2021	2020	ONE-YEAR CHANGE
		Total, All Imports	\$346,725,284,236	\$294,203,260,772	17.85%
7	1	Oil	\$12,625,511,203	\$6,233,568,546	102.54%
-1	2	Computers	\$11,900,443,373	\$9,933,456,860	19.80%
-1	3	Passenger vehicles	\$9,390,639,817	\$8,619,165,796	8.95%
-1	4	Motor vehicle parts	\$8,979,647,482	\$7,674,224,748	17.01%
0	5	TVs, computer monitors	\$8,426,724,541	\$6,698,050,038	25.81%
0	6	Furniture, parts	\$8,196,707,326	\$6,681,517,366	22.68%
2	7	Toys, children's bicycles, games	\$7,931,032,867	\$6,122,738,575	29.53%
3	8	Seats, excluding barber, dental	\$6,578,842,327	\$4,995,658,958	31.69%
-5	9	Cell phones, related equipment	\$6,487,169,563	\$6,921,357,203	-6.27%
2	10	Shoes made from textiles	\$5,628,009,954	\$4,464,283,695	26.07%
-1	11	Printers, all types, parts	\$5,376,975,775	\$5,199,003,776	3.42%
3	12	Leather shoes	\$4,944,140,560	\$3,977,498,965	24.30%
5	13	Equipment, parts for exercising	\$4,918,264,278	\$3,533,255,231	39.20%
-1	14	Electric water, space, soil heaters	\$4,860,397,134	\$4,192,944,362	15.92%
12	15	Electric storage batteries	\$4,853,607,594	\$2,507,970,070	93.53%
27	16	Apparel and accessories made of rubber	\$4,480,220,514	\$1,571,758,899	185.05%
-1	17	Rubber tires	\$4,437,302,974	\$3,921,277,535	13.16%
-1	18	Misc. plastic articles	\$4,376,780,101	\$3,592,199,956	21.84%
-5	19	Sweaters, pullovers, vests, knit or crocheted	\$4,361,296,048	\$3,989,173,218	9.33%
-1	20	Amplifiers, speakers, microphones	\$4,260,831,453	\$3,239,532,178	31.53%
9	21	Gasoline, other refined petroleum	\$3,809,511,191	\$2,463,425,328	54.64%
12	22	Video game consoles	\$3,790,278,031	\$2,321,033,663	63.30%
-1	23	Handbags, wallets, jewelry cases, etc.	\$3,625,784,562	\$2,993,523,128	21.12%
1	24	Shoes made of plastic, rubber	\$3,522,914,381	\$2,648,498,577	33.02%
-2	25	Lamp and lighting parts	\$3,363,960,277	\$2,875,113,952	17.00%
-6	26	Power supplies, transformers	\$3,325,050,044	\$3,157,160,245	5.32%
1	27	Plastic tableware and other products	\$3,075,221,309	\$2,497,542,606	23.13%
-7	28	Photo-sensitive semi-conductors, parts	\$2,910,195,376	\$3,056,719,532	-4.79%
4	29	Compressors and pumps	\$2,817,015,700	\$2,397,921,477	17.48%
5	30	Refrigerators, freezers	\$2,771,680,764	\$2,298,861,121	20.57%
-7	31	Women's or girls' suits, not knit	\$2,725,738,772	\$2,740,132,154	-0.53%
-1	32	Insulated wire, cable	\$2,705,348,343	\$2,443,170,127	10.73%
-1	33	Taps, cocks and valves for pipes, tanks	\$2,700,133,155	\$2,437,628,107	10.77%
-27	34	Misc. articles made from textile materials	\$2,548,451,692	\$6,342,775,884	-59.82%
-9	35	TV cameras, camcorders, digital cameras	\$2,511,532,412	\$2,620,856,505	-4.17%
1	36	Saws, drills and other hand tools	\$2,396,834,004	\$2,180,882,940	9.90%
2	37	Women's or girls' suits, knit or crocheted	\$2,396,468,245	\$1,884,671,560	27.16%
0	38	Hardware for fixtures	\$2,263,674,473	\$1,969,551,082	14.93%
2	39	Catalytic converters, oil and air filters	\$1,980,159,742	\$1,745,471,116	13.45%
8	40	Carnival art	\$1,969,812,162	\$1,447,043,153	36.13%
4	41	Misc. iron or steel household articles and parts	\$1,953,990,607	\$1,470,652,454	32.87%
-2	42	Mattresses and other bedding products	\$1,916,721,020	\$1,748,915,920	9.59%
4	43	Screws, nuts, bolts, washers	\$1,886,781,809	\$1,457,861,091	29.42%
-2	44	Plastic boxes, containers	\$1,883,679,023	\$1,743,356,074	8.05%
6	45	Women's or girls' slips	\$1,832,118,968	\$1,379,850,327	32.78%
3	46	Mechanized medical equipment	\$1,775,673,731	\$1,444,078,613	22.96%
-18	47	Computer parts	\$1,723,623,778	\$2,490,907,538	-30.80%
10	48	Air-conditioning machines	\$1,711,347,944	\$1,181,230,249	44.88%
3	49	Electric domestic appliances, parts	\$1,691,549,875	\$1,335,445,319	26.67%
-6	50	Vacuum cleaners, parts	\$1,629,649,041	\$1,491,739,920	9.24%

Source: WorldCity analysis of U.S. Census Bureau data

FAST, CONNECTED & DEEP.

40 — Fastest delivery between U.S. markets and the Pacific Rim

— Optimal supply chain readiness

— Superior on-dock rail

45

— Innovative Port Optimizer™ supply chain solution

— Recognized industry leadership

50

— Diesel particulate emissions reductions
of more than 87% since 2005

— 53' Channel depth

EFFICIENCY FROM TOP TO BOTTOM.

portoflosangeles.org



@PortofLA

**THE PORT
OF LOS ANGELES** 