

City Dock No. 1 Marine Research Center Project

Public Scoping Meeting
for the Environmental Impact Report (EIR)

Lead Agency
Los Angeles Harbor Department
Environmental Management Division



January 13, 2011



Agenda

1. Introductions
2. CEQA Process Jan Green Rebstock
3. Project Description Adrienne Fedrick
4. Public Comments All
5. Closing Summary Jan Green Rebstock

Purpose of Scoping Meeting

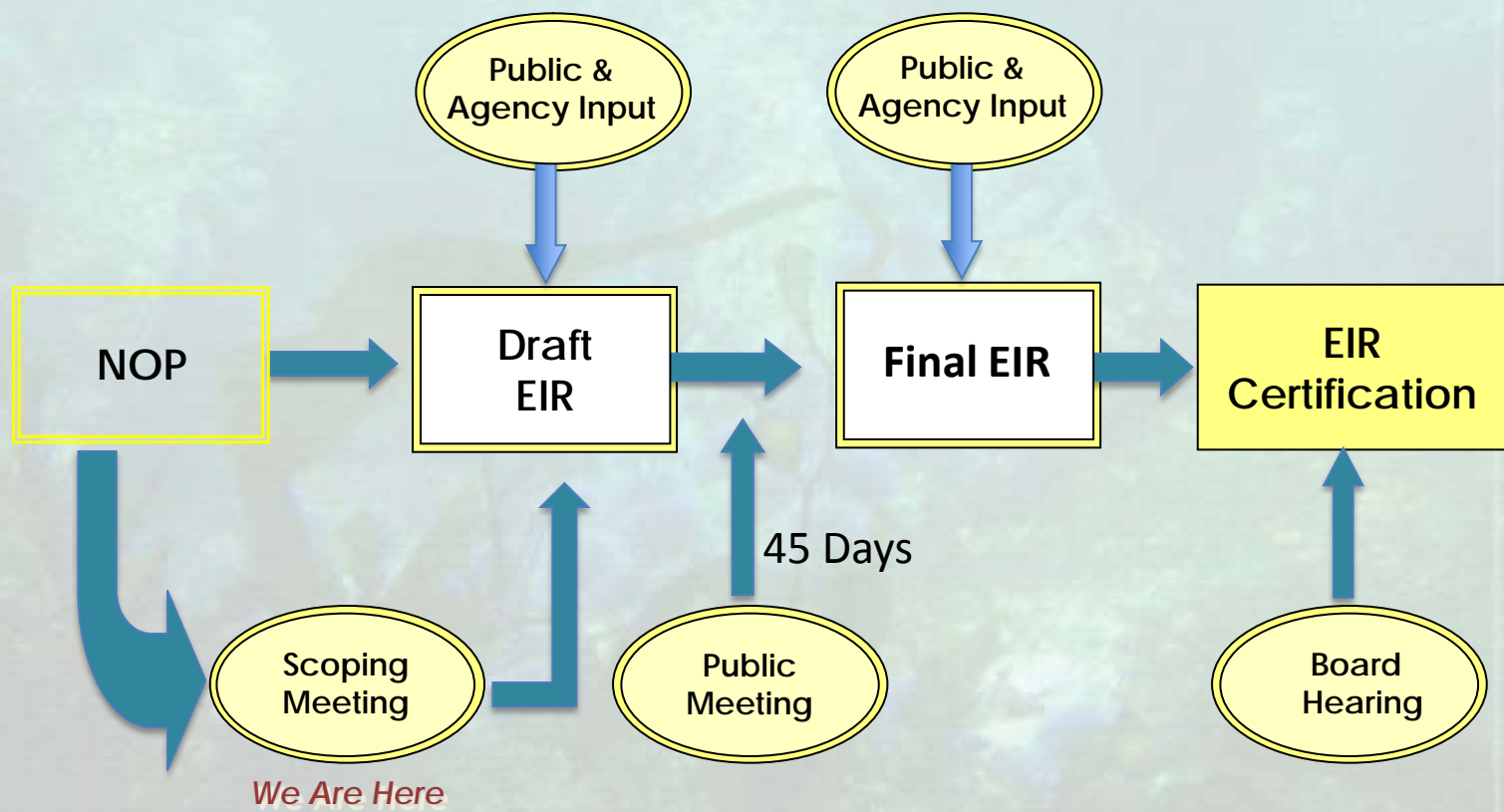
- Inform public that the Port is the Lead Agency under the California Environmental Quality Act (CEQA) in preparing the Environmental Impact Report (EIR)
- Provide information about the proposed Project
- Assist Port in identifying environmental issues, mitigation measures, and alternatives to be analyzed in the EIR
- Invite public participation on the scope of the environmental issues to be studied

CEQA Objectives

CEQA=California Environmental Quality Act

- Disclose potential environmental effects
- Identify how to avoid or reduce impacts
- Prevent environmental damage through mitigation or alternatives
- Disclose reasons for approval where significant impacts occur
- Foster interagency coordination in review of projects
- Enhance public participation

Environmental Review Process



Dec
2010

Summer
2011

Fall
2011

Winter
2011

Environmental Issues to be Addressed in the EIR

- Aesthetics
- Air quality
- Biological resources
- Cultural resources
- Geology & soils
- Greenhouse Gas Emissions
- Hazards & Hazardous Materials
- Hydrology & Water Quality
- Land Use & Planning
- Noise
- Population & Housing
- Public services
- Transportation & Traffic
- Utilities & Service Systems

Project Overview



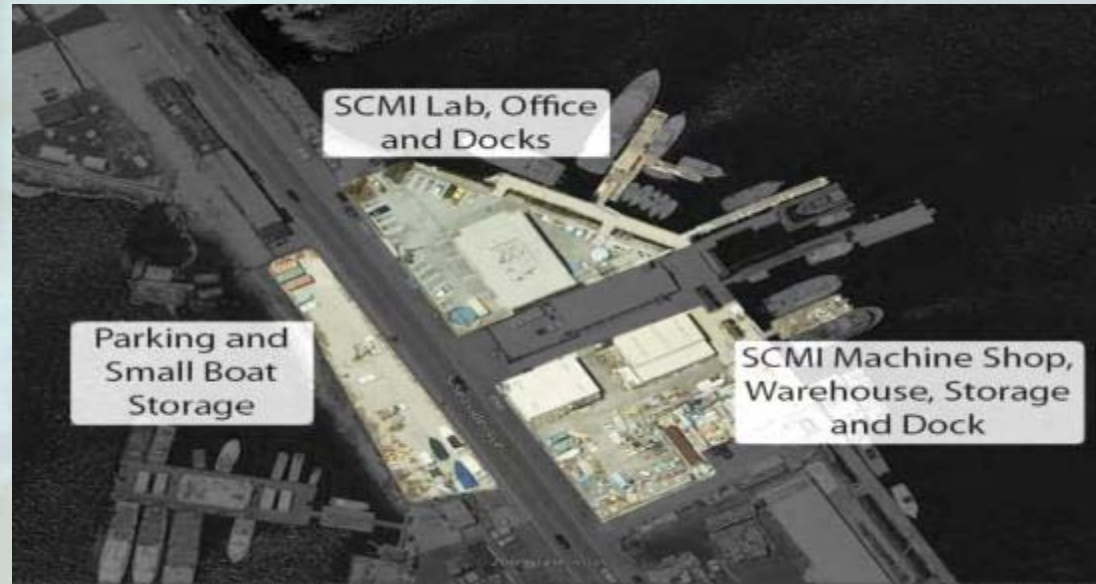
B. 56-60;
B.70 - 71

B. 260

Existing Facilities: Southern California Marine Institute



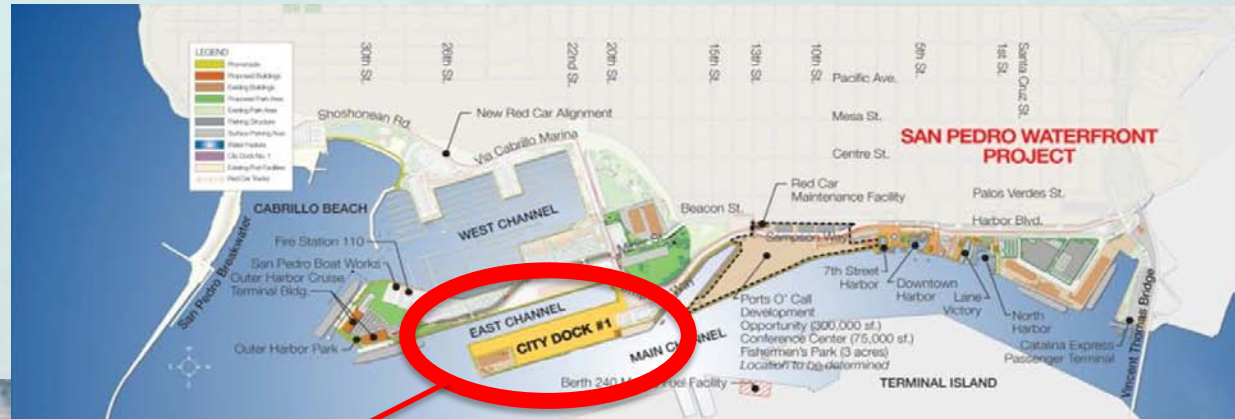
Constrained space and depth for cutting-edge research equipment and vessels.



10 Universities on 1.3 acres



Proposed Project Location



Proposed Project



The City Dock #1 vision is to become home to a thriving cluster of university researchers, educational facilities, and spin-off technology ventures seeking to solve problems, create jobs, and improve the quality of life in Los Angeles.

Project Objectives

- Construct a world-class marine research center at Berths 56-60 and 70-71 with state-of-the-art facilities
- Support research needs such as:
 - Climate Change
 - Robotics and remote sensing of oceans and habitat
 - Fisheries
 - Marine resource conservation and management
- Replace existing B. 260 SCMI facilities with a location that allows for expanded capabilities.
- Provide dock space for small and large (up to 300 feet) research vessels



Project Objectives

- Provide public amenities, including public education classroom space and interpretive exhibits related to marine research studies
- Provide a continuous waterfront promenade as approved in the San Pedro Waterfront Project
- Construct the world's largest seawater wave tank to study tsunamis and the generation of wave energy
- Provide a location for a marine-related business incubator park for synergy among research and commercial interests, for such uses as aquaculture, sustainable energy production, and marine exploration



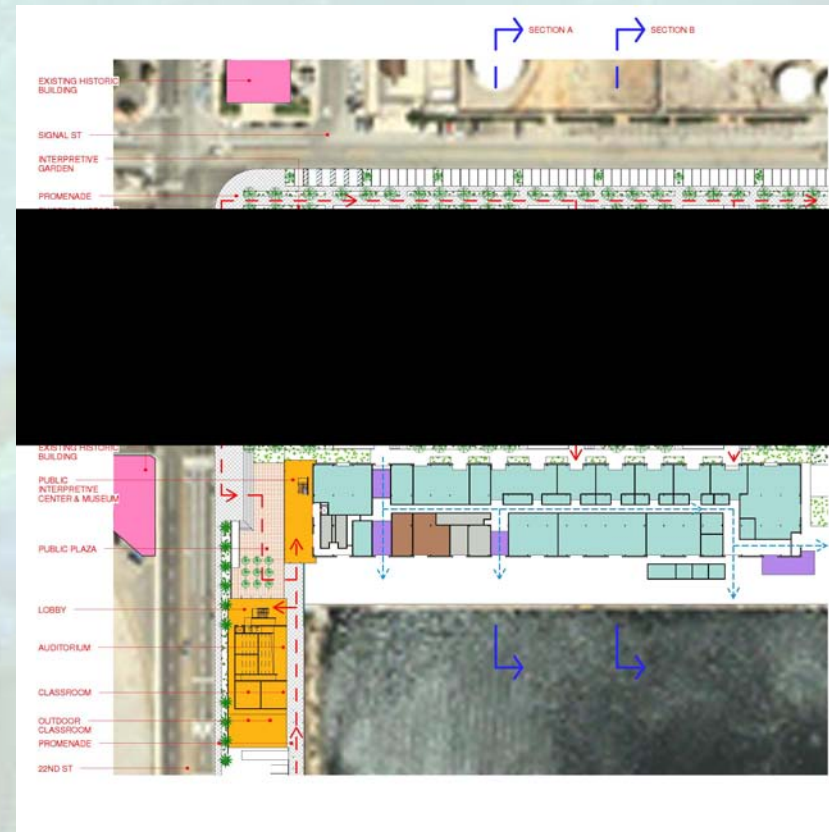
Proposed Project Site Plan



Proposed Project Elements

BERTHS 56-57

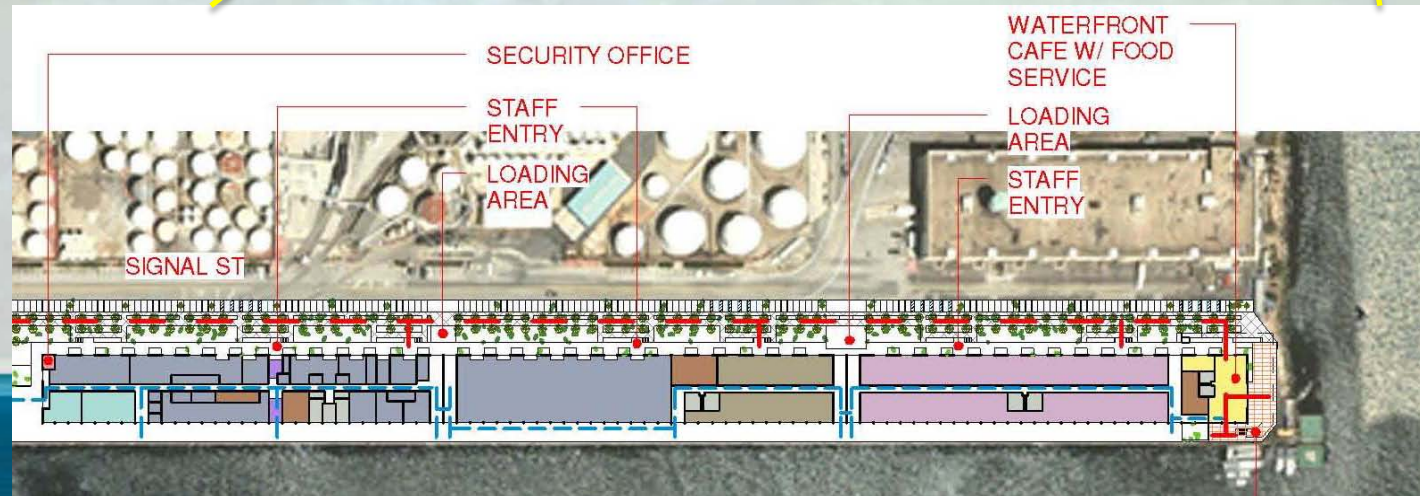
- Relocation of SCMI from B.260 on Terminal Island to Berths 56 and 57
- Demolition of SCMI Facility at B. 260 (Site Restoration)
- Wharf retrofit for Berths 57
- Adaptive reuse of Berth 57 existing transit shed (46,500 SF)
- Replacement of existing addition (3,600 SF)
- Berth 57 Facilities will include office space, research and teaching labs, classrooms, and storage areas.
- Construction of a new Learning Center at B.56 with a 150-seat auditorium/lecture hall and classroom space.



Proposed Project Elements

BERTHS 58-60

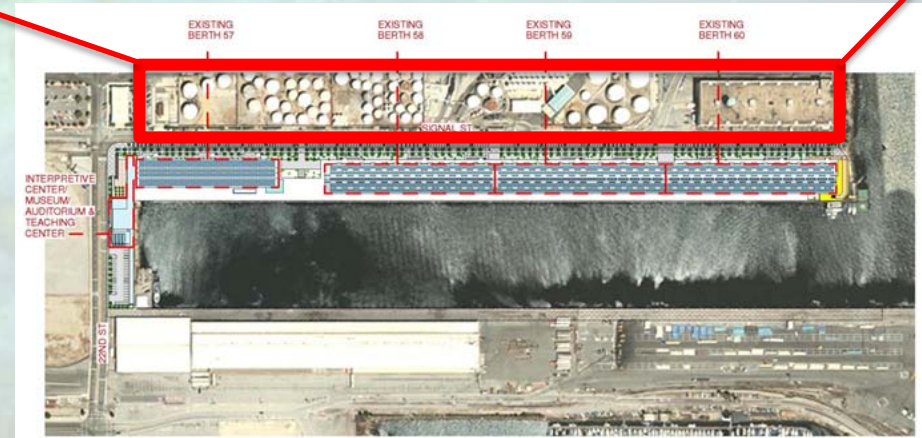
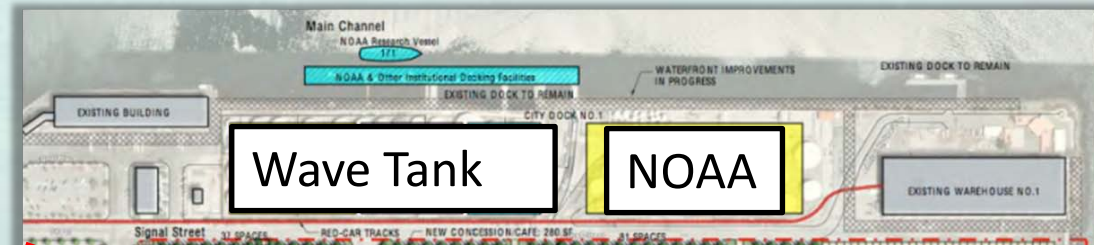
- Wharf Retrofit Berths 58-60
- Adaptive Reuse of transit shed Berths 58-60 (180,000 SF)
- Create a marine science business park/incubator space with offices and research labs within Berths 59-60 Transit Sheds



Proposed Project Elements

BERTHS 70-71

- Remediation and development of Berths 70 and 71
- 700 lineal feet of Docking Space at Berths 70-71
- Construction of 80,000 SF (36,000 cy) Wave Tank at Berths 70-71



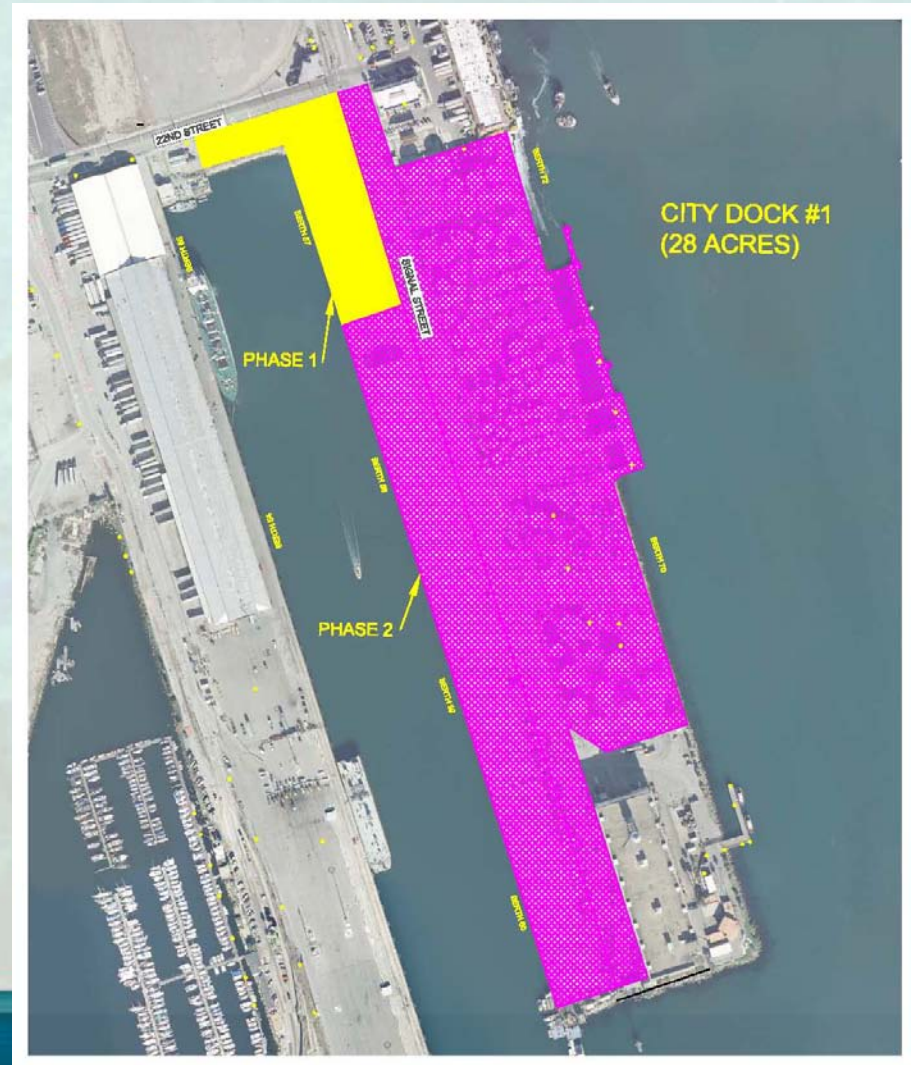
PHASING

Phase 1 (2012 – 2016)

- Berth 57 SCMI Relocation
- Berth 56 Interpretive Center/Auditorium
- Public Plaza at B.57

Phase 2 (2013 – 2024)

- Berth 58-60 SCMI Expansion & Business Park
- Berths 70-71 Development
- Signal Street Improvements
- Public Promenade
- Wave Tank



Project Alternatives

Project alternatives under consideration include:

- No Project
- Reduced Project
- New Construction at Berths 57-60

We Want Your Comments!

Oral Comments – a transcript of this meeting will be prepared and posted on the Port website

Comment Card - Complete and return tonight

Mail – Submit comment card or letter by mail to:

Christopher Cannon
Los Angeles Harbor Department
425 South Palos Verdes Street
San Pedro, California 90731

Send an e-mail to:

ceqacomments@portla.org

Please send e-mail comments in letter format as an attachment to the email. Comment letters should include the commenter's mailing address and the project title "City Dock No. 1 Marine Research Center" in the email subject line.

DUE JANUARY 31, 2011