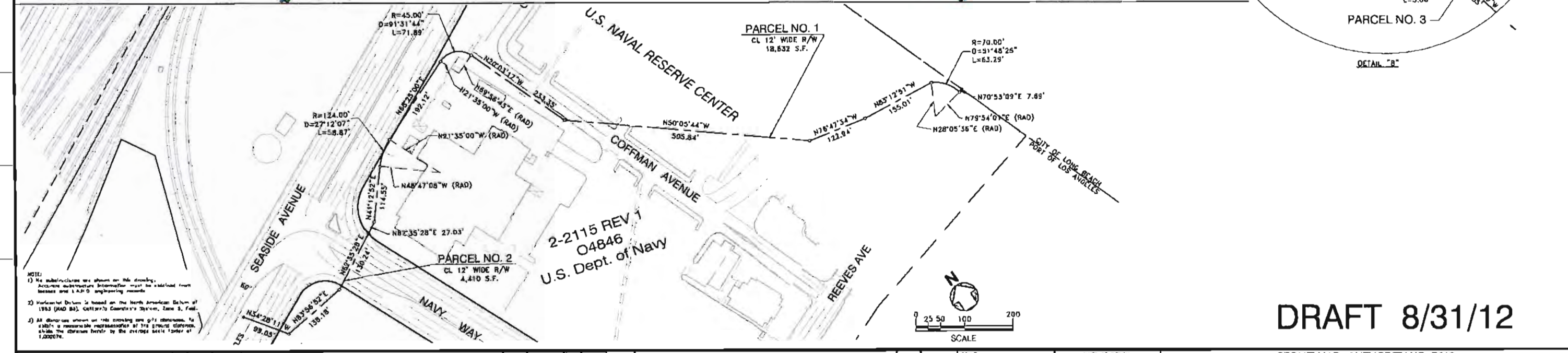
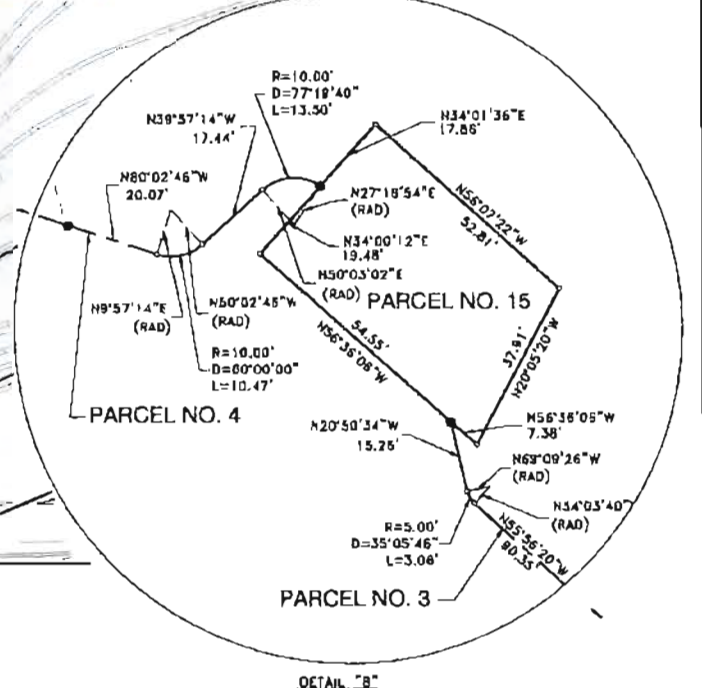
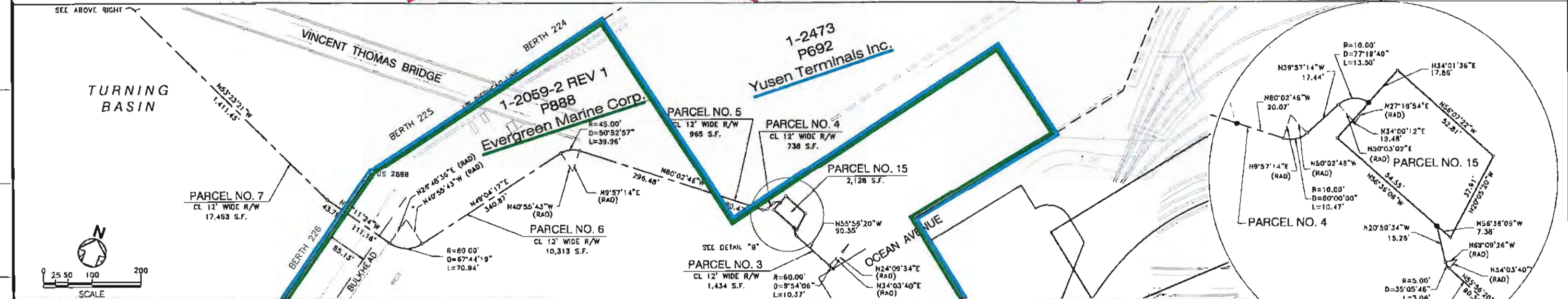
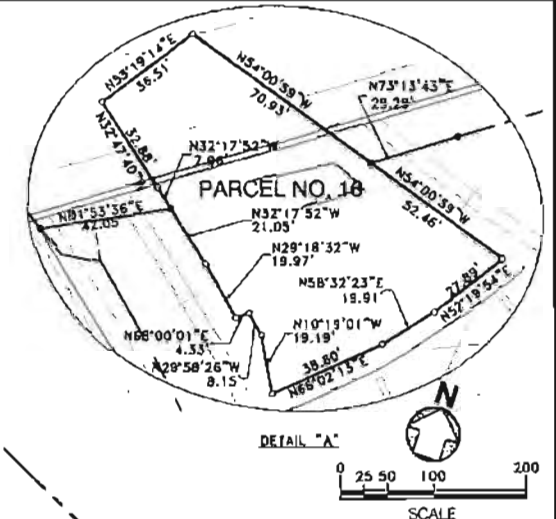
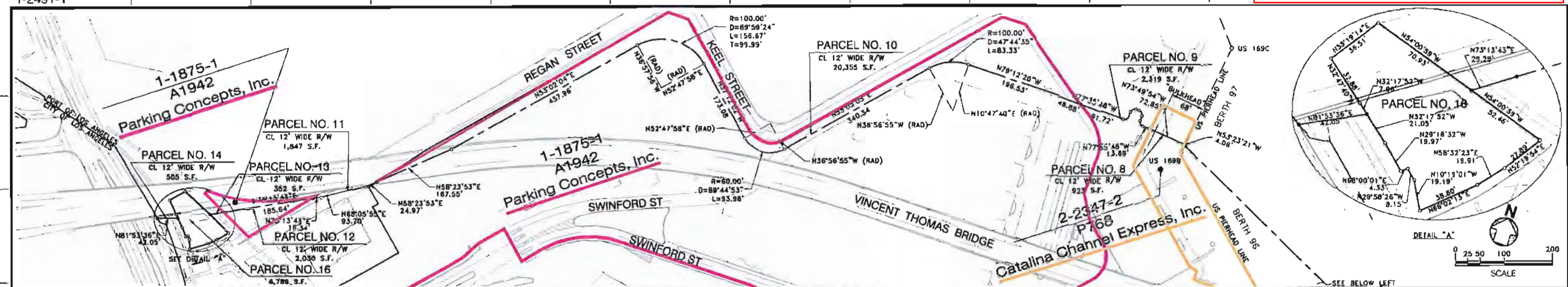


1-2491-1



NOTE:  
 1) No subdivisions are shown on this drawing. Accurate measurements hereinafter must be obtained from bearings and L&P O engineering records.  
 2) Horizontal Datum is based on the North American Datum of 1983 (NAD 83), California Coordinate System, Zone 5, East.  
 3) All distances shown on this drawing are g.c.s. distances. To obtain a measurable representation of the ground distances, obtain the distance thereat by the average scale factor of 1.00076.

DRAFT 8/31/12

EXHIBIT VI	NO.	DATE	DRAWN	REVISIONS	APPROVED	NO.	DATE	DRAWN	REVISIONS	APPROVED	SCALE	1"=100'	OWNER OF DESIGN	PERMIT MAP - AUTHORITY NO. P513
													UNITED STATES DEPARTMENT OF THE NAVY	
													THE PORT OF LOS ANGELES	GRAPHIC NUMBER
													1-2491-1	