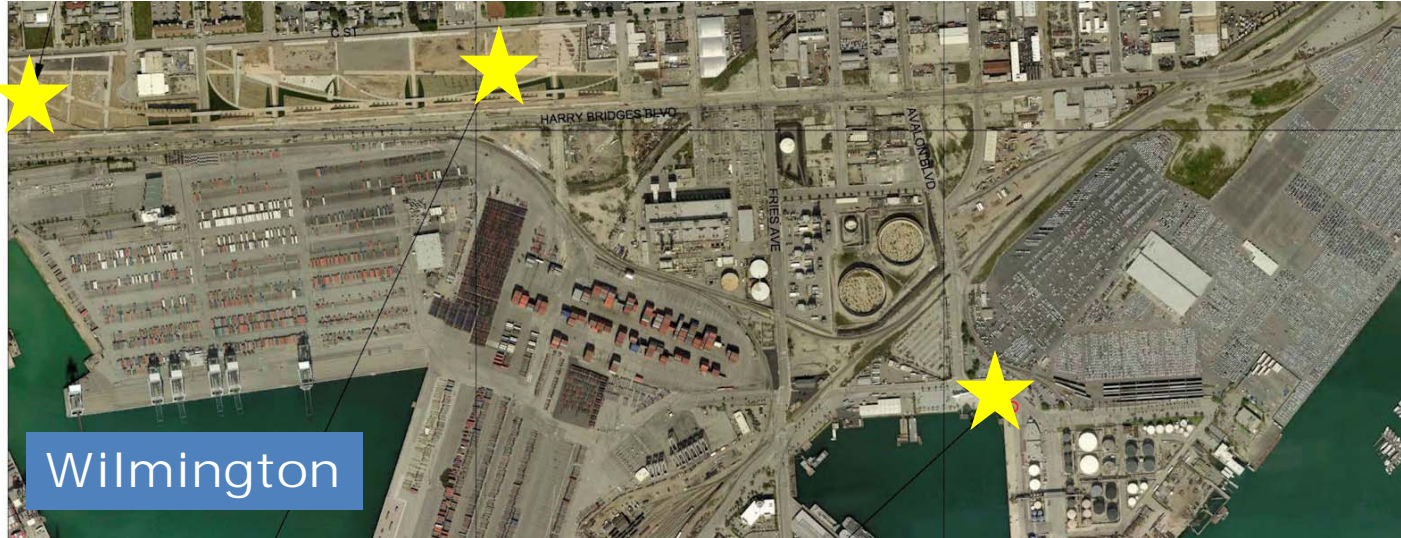




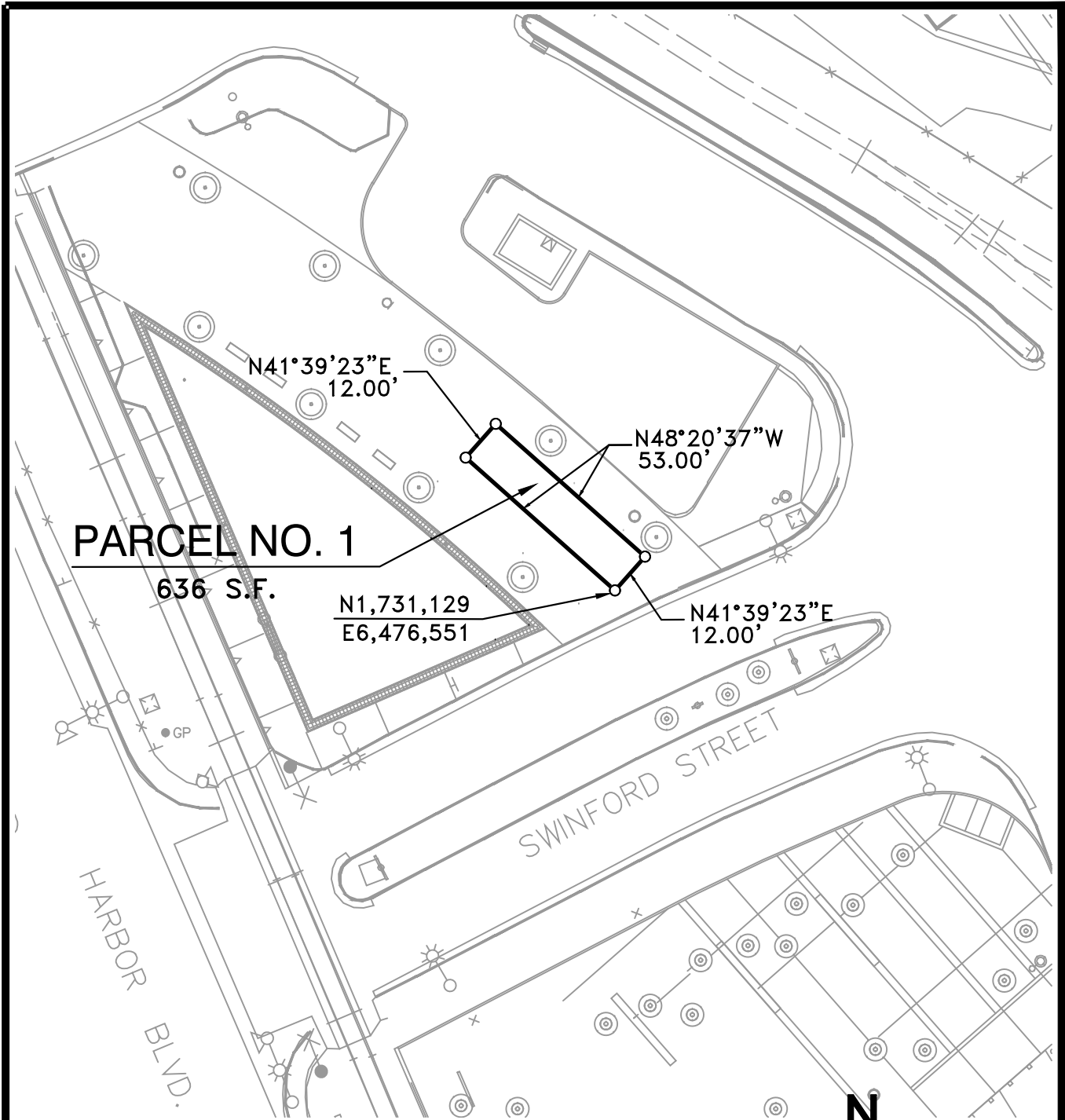
Proposed Station Locations





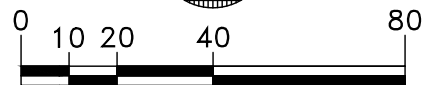
Proposed Station Locations

1. Fanfare Fountain
 - Cruise Terminal
2. Catalina Express
3. USS Iowa
4. Downtown Harbor
5. Crafted/22nd St Park
6. Ports O' Call
7. Doubletree Hotel
8. Cabrillo Beach
9. Wilmington Waterfront Park – West
10. Wilmington Waterfront Park – East
11. Banning's Landing



NOTE:

- 1) No substructures are shown on this drawing. Accurate substructure information must be obtained from lessees and L.A.H.D. engineering records.
- 2) Horizontal Datum is based on the North American Datum of 1983 (NAD 83), California Coordinate System, Zone 5, Feet.
- 3) All distances shown on this drawing are grid distances. To obtain a reasonable representation of the ground distance, divide the distance herein by the average scale factor of 1.000076.



GRAPHIC SCALE

SCALE: 1" = 40'	CHIEF OF DESIGN
DRAWN: C. VENTURA	ASSISTANT CHIEF OF HARBOR ENGINEER
CHECKED: D. RAASCH	
DESIGNED: C. VENTURA	
ENGR/ARCH	
	CHIEF HARBOR ENGINEER
	DATE

PERMIT MAP - AUTHORITY NO. TBD

METRO BIKE SHARE - FAN FAIR FOUNTAIN (CRUISE TERMINAL)



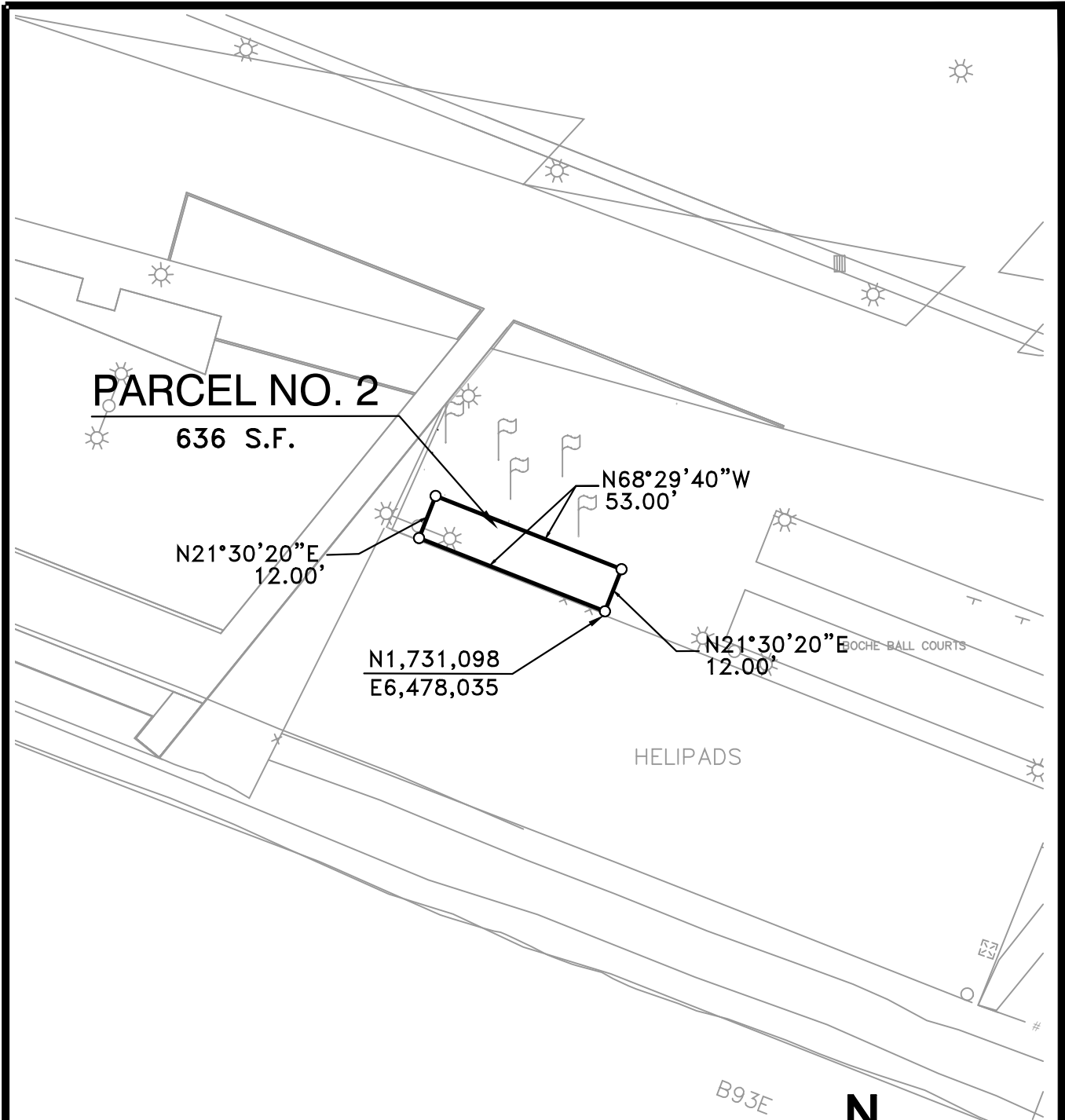
THE PORT OF LOS ANGELES
ENGINEERING DIVISION
 425 S. PALOS VERDES STREET SAN PEDRO CA 90731-3309

DRAWING NUMBER

5-7347-1

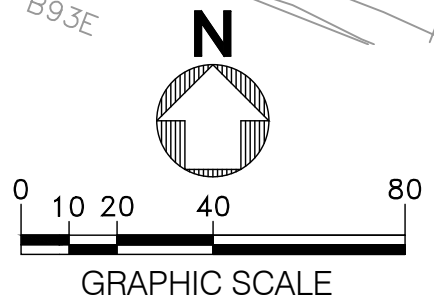
POLAPRO5_VER.1_12/96
 5-7347.DWG

DRAFT



NOTE:

- 1) No substructures are shown on this drawing. Accurate substructure information must be obtained from lessees and L.A.H.D. engineering records.
- 2) Horizontal Datum is based on the North American Datum of 1983 (NAD 83), California Coordinate System, Zone 5, Feet.
- 3) All distances shown on this drawing are grid distances. To obtain a reasonable representation of the ground distance, divide the distance herein by the average scale factor of 1.000076.



SCALE: 1" = 40'	CHIEF OF DESIGN
DRAWN: C. VENTURA	ASSISTANT CHIEF OF HARBOR ENGINEER
CHECKED: D. RAASCH	
DESIGNED: C. VENTURA	
ENGR/ARCH	
	CHIEF HARBOR ENGINEER
	DATE

PERMIT MAP - AUTHORITY NO. TBD
METRO BIKE SHARE - CATALINA EXPRESS



THE PORT OF LOS ANGELES
ENGINEERING DIVISION
 425 S. PALOS VERDES STREET SAN PEDRO CA 90731-3309

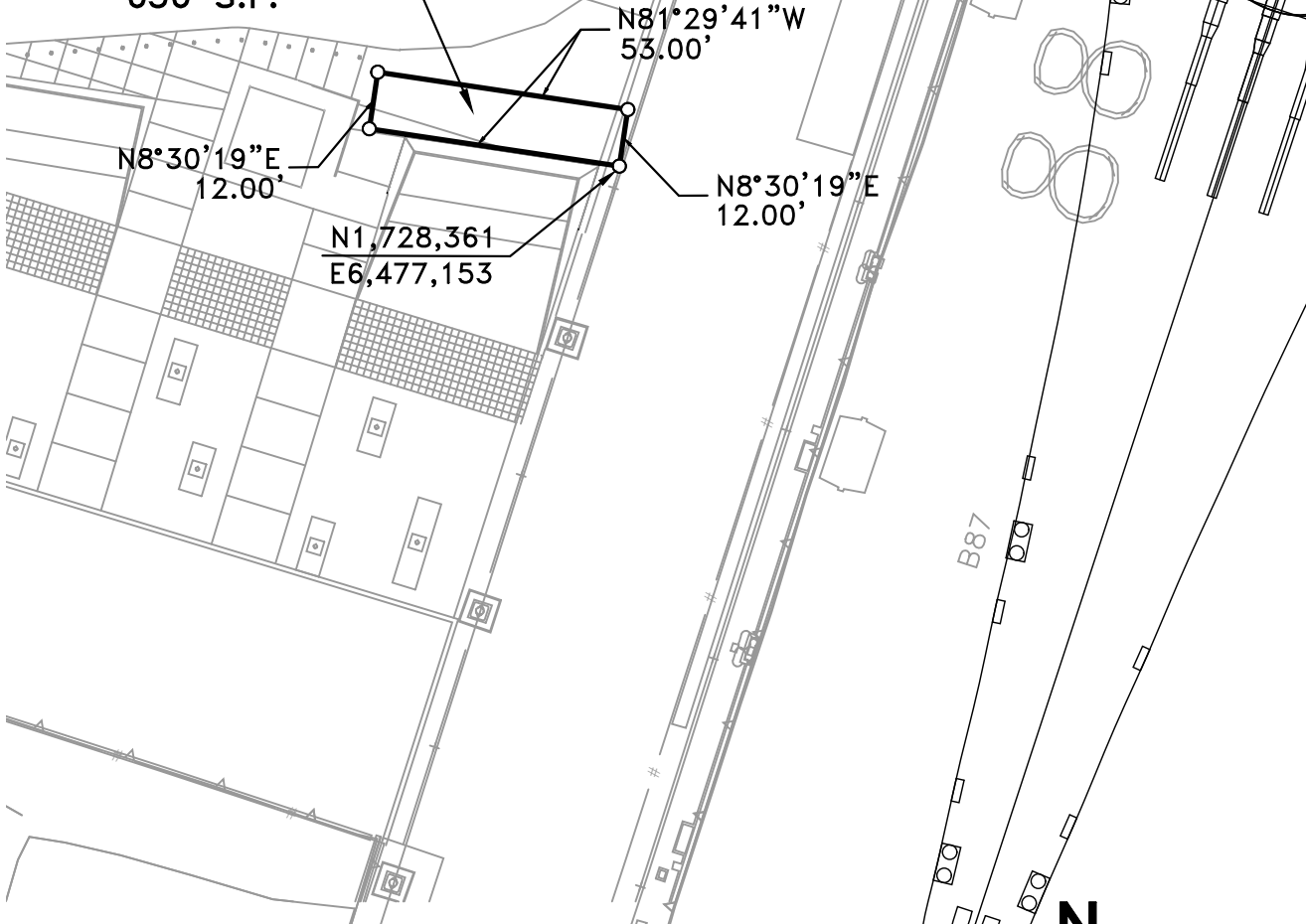
DRAWING NUMBER
5-7347-2

DRAFT

POLAPROS_VER.1_12/96
 5-7347.DWG

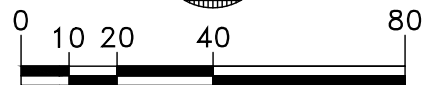
PARCEL NO. 3

636 S.F.



NOTE:

- 1) No substructures are shown on this drawing. Accurate substructure information must be obtained from lessees and L.A.H.D. engineering records.
- 2) Horizontal Datum is based on the North American Datum of 1983 (NAD 83), California Coordinate System, Zone 5, Feet.
- 3) All distances shown on this drawing are grid distances. To obtain a reasonable representation of the ground distance, divide the distance herein by the average scale factor of 1.000076.



GRAPHIC SCALE

SCALE: 1" = 40'	CHIEF OF DESIGN
DRAWN: C. VENTURA	ASSISTANT CHIEF OF HARBOR ENGINEER
CHECKED: D. RAASCH	
DESIGNED: C. VENTURA	
ENGR/ARCH	
	CHIEF HARBOR ENGINEER
	DATE

PERMIT MAP - AUTHORITY NO. TBD
METRO BIKE SHARE - U.S.S. IOWA

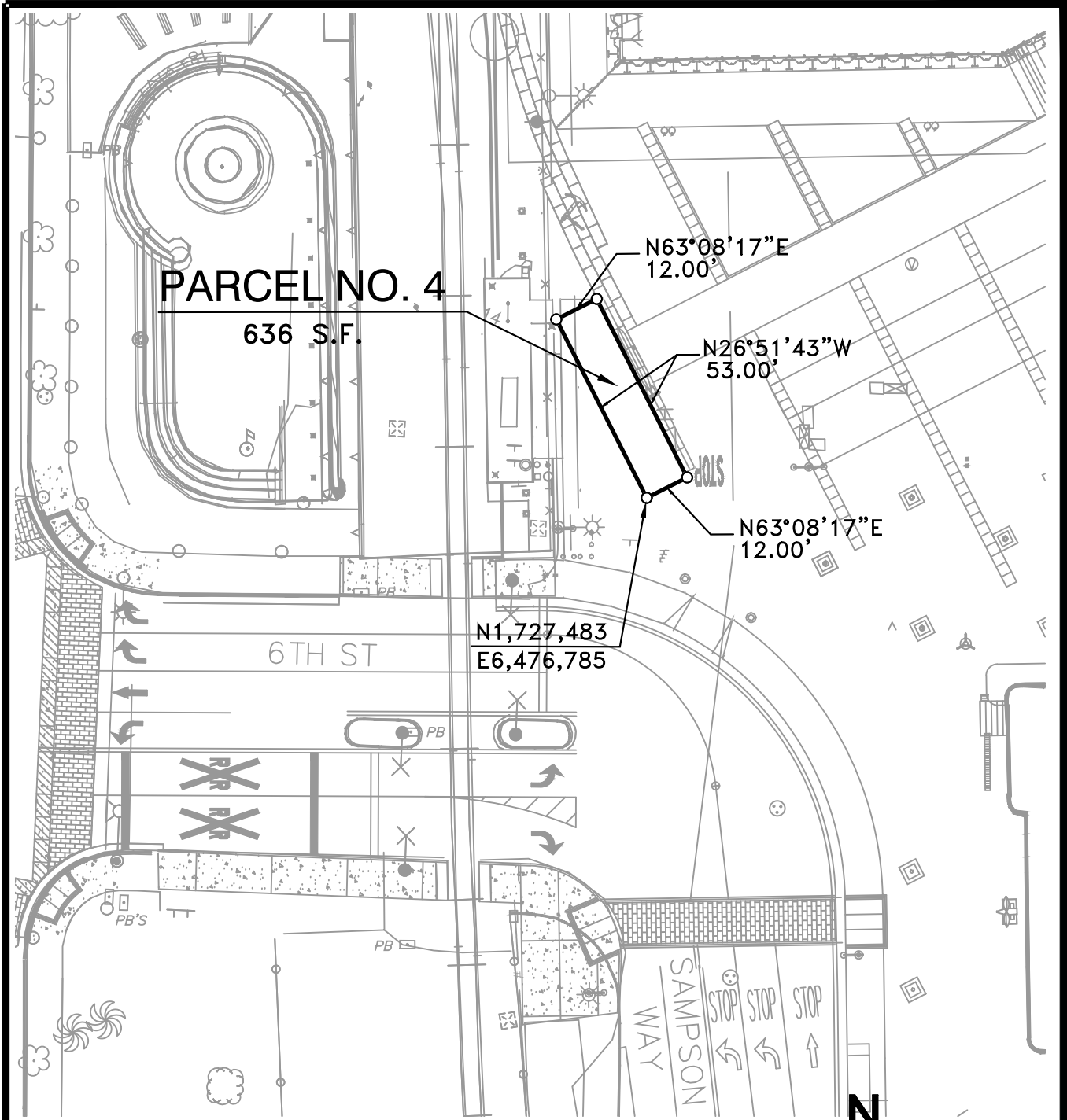


THE PORT OF LOS ANGELES
ENGINEERING DIVISION
 425 S. PALOS VERDES STREET SAN PEDRO CA 90731-3309

DRAWING NUMBER
5-7347-3

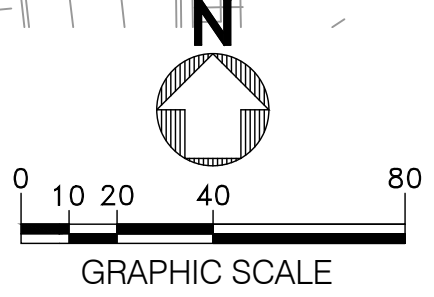
POLAPROS_VER.1_12/96
 5-7347.DWG

DRAFT



NOTE:

- 1) No substructures are shown on this drawing. Accurate substructure information must be obtained from lessees and L.A.H.D. engineering records.
- 2) Horizontal Datum is based on the North American Datum of 1983 (NAD 83), California Coordinate System, Zone 5, Feet.
- 3) All distances shown on this drawing are grid distances. To obtain a reasonable representation of the ground distance, divide the distance herein by the average scale factor of 1.000076.



SCALE: 1" = 40'	CHIEF OF DESIGN
DRAWN: C. VENTURA	ASSISTANT CHIEF OF HARBOR ENGINEER
CHECKED: D. RAASCH	
DESIGNED: C. VENTURA	
ENGR/ARCH	
	CHIEF HARBOR ENGINEER
	DATE

PERMIT MAP - AUTHORITY NO. TBD

METRO BIKE SHARE - DOWNTOWN HARBOR



THE PORT OF LOS ANGELES
ENGINEERING DIVISION
425 S. PALOS VERDES STREET SAN PEDRO CA 90731-3309

DRAWING NUMBER
5-7347-4

POLAPROS_VER.1_12/96
5-7347.DWG

DRAFT

PARCEL NO. 5

636 S.F.

$\frac{N1,722,696}{E6,476,368}$

N72°30'27"E
12.00'

N17°29'33"W
53.00'

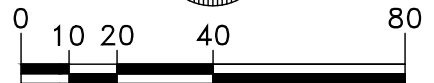
N72°30'27"E
12.00'

GBSS

22ND STREET

NOTE:

- 1) No substructures are shown on this drawing. Accurate substructure information must be obtained from lessees and L.A.H.D. engineering records.
- 2) Horizontal Datum is based on the North American Datum of 1983 (NAD 83), California Coordinate System, Zone 5, Feet.
- 3) All distances shown on this drawing are grid distances. To obtain a reasonable representation of the ground distance, divide the distance herein by the average scale factor of 1.000076.



GRAPHIC SCALE

SCALE: 1" = 40'	CHIEF OF DESIGN
DRAWN: C. VENTURA	ASSISTANT CHIEF OF HARBOR ENGINEER
CHECKED: D. RAASCH	
DESIGNED: C. VENTURA	
ENGR/ARCH	
	CHIEF HARBOR ENGINEER
	DATE

PERMIT MAP - AUTHORITY NO. TBD
METRO BIKE SHARE - CRAFTED AT THE PORT



THE PORT OF LOS ANGELES
ENGINEERING DIVISION
 425 S. PALOS VERDES STREET SAN PEDRO CA 90731-3309

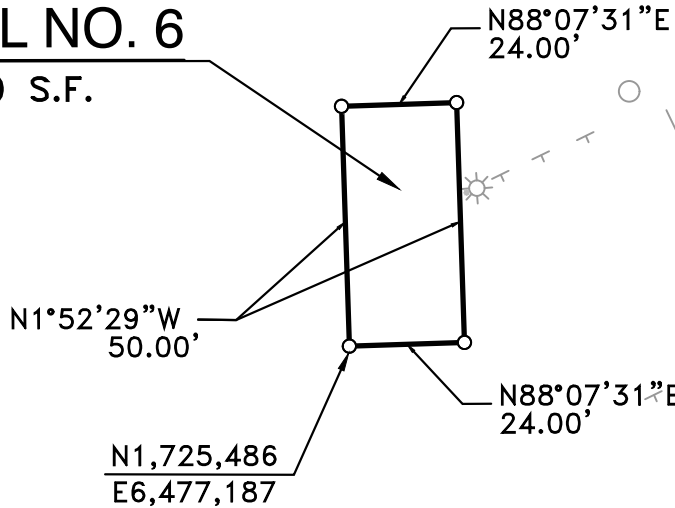
DRAWING NUMBER
5-7347-5

DRAFT

POLAPRO5_VER.1_12/96
 5-7347.DWG

PARCEL NO. 6

1,200 S.F.

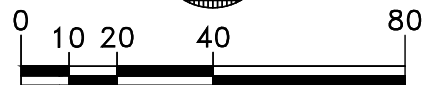


$\frac{N1,725,486}{E6,477,187}$

NAGOYA WY

NOTE:

- 1) No substructures are shown on this drawing. Accurate substructure information must be obtained from lessees and L.A.H.D. engineering records.
- 2) Horizontal Datum is based on the North American Datum of 1983 (NAD 83), California Coordinate System, Zone 5, Feet.
- 3) All distances shown on this drawing are grid distances. To obtain a reasonable representation of the ground distance, divide the distance herein by the average scale factor of 1.000076.



GRAPHIC SCALE

SCALE: 1" = 40'	CHIEF OF DESIGN
DRAWN: C. VENTURA	ASSISTANT CHIEF OF HARBOR ENGINEER
CHECKED: D. RAASCH	
DESIGNED: C. VENTURA	
ENGR/ARCH	
	CHIEF HARBOR ENGINEER
	DATE

PERMIT MAP - AUTHORITY NO. TBD
METRO BIKE SHARE - PORTS O'CALL

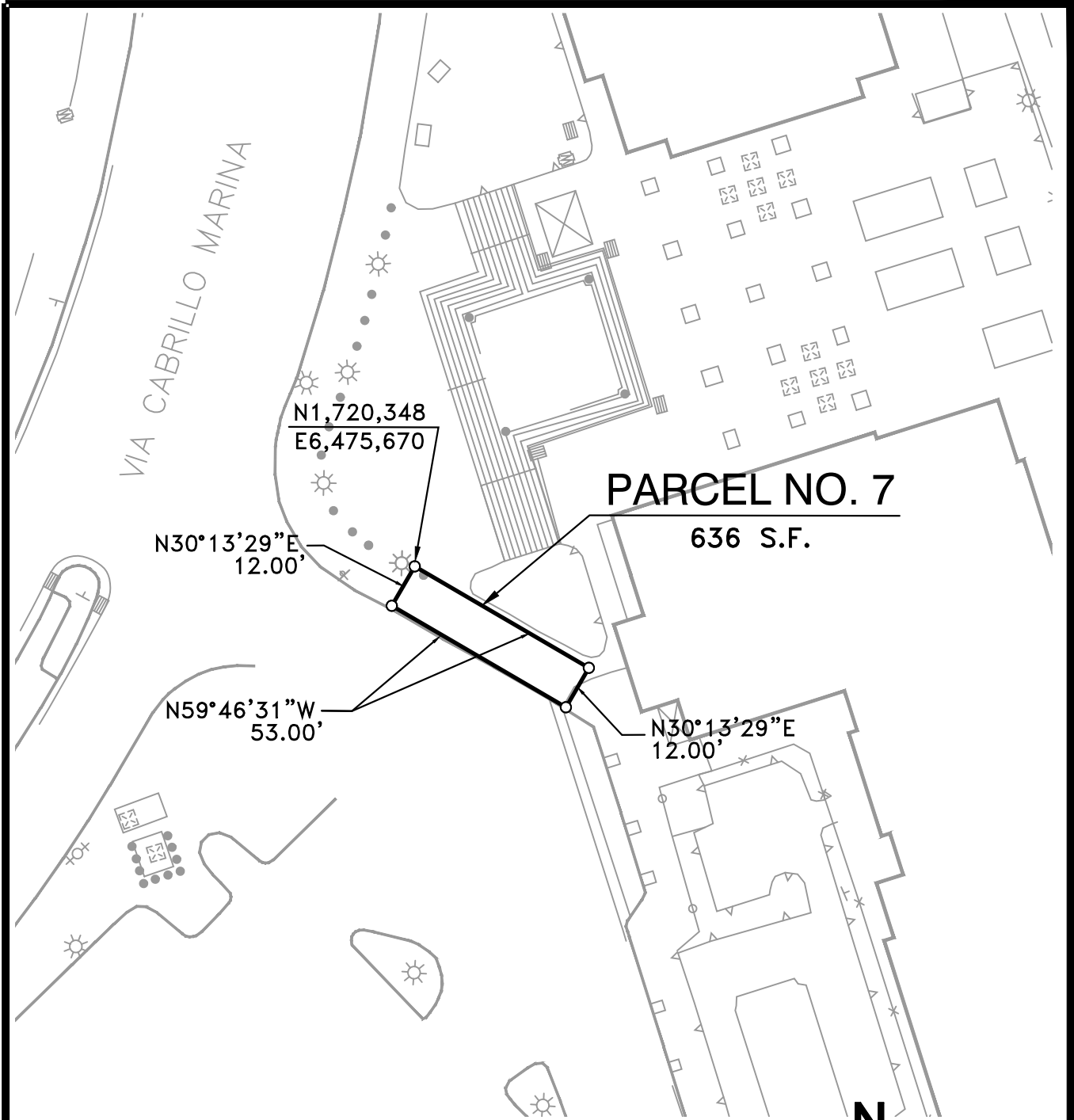


THE PORT OF LOS ANGELES
ENGINEERING DIVISION
 425 S. PALOS VERDES STREET SAN PEDRO CA 90731-3309

DRAWING NUMBER
5-7347-6

DRAFT

POLAPRO5_VER.1_12/96
5-7347.DWG



VIA CABRILLO MARINA

N1,720,348
E6,475,670

PARCEL NO. 7

636 S.F.

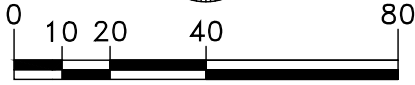
N30°13'29"E
12.00'

N59°46'31"W
53.00'

N30°13'29"E
12.00'

NOTE:

- 1) No substructures are shown on this drawing. Accurate substructure information must be obtained from lessees and L.A.H.D. engineering records.
- 2) Horizontal Datum is based on the North American Datum of 1983 (NAD 83), California Coordinate System, Zone 5, Feet.
- 3) All distances shown on this drawing are grid distances. To obtain a reasonable representation of the ground distance, divide the distance herein by the average scale factor of 1.000076.



GRAPHIC SCALE

SCALE: 1" = 40'	CHIEF OF DESIGN
DRAWN: C. VENTURA	ASSISTANT CHIEF OF HARBOR ENGINEER
CHECKED: D. RAASCH	
DESIGNED: C. VENTURA	
ENGR/ARCH	
	CHIEF HARBOR ENGINEER
	DATE

PERMIT MAP - AUTHORITY NO. TBD

METRO BIKE SHARE - CABRILLO WAY MARINA

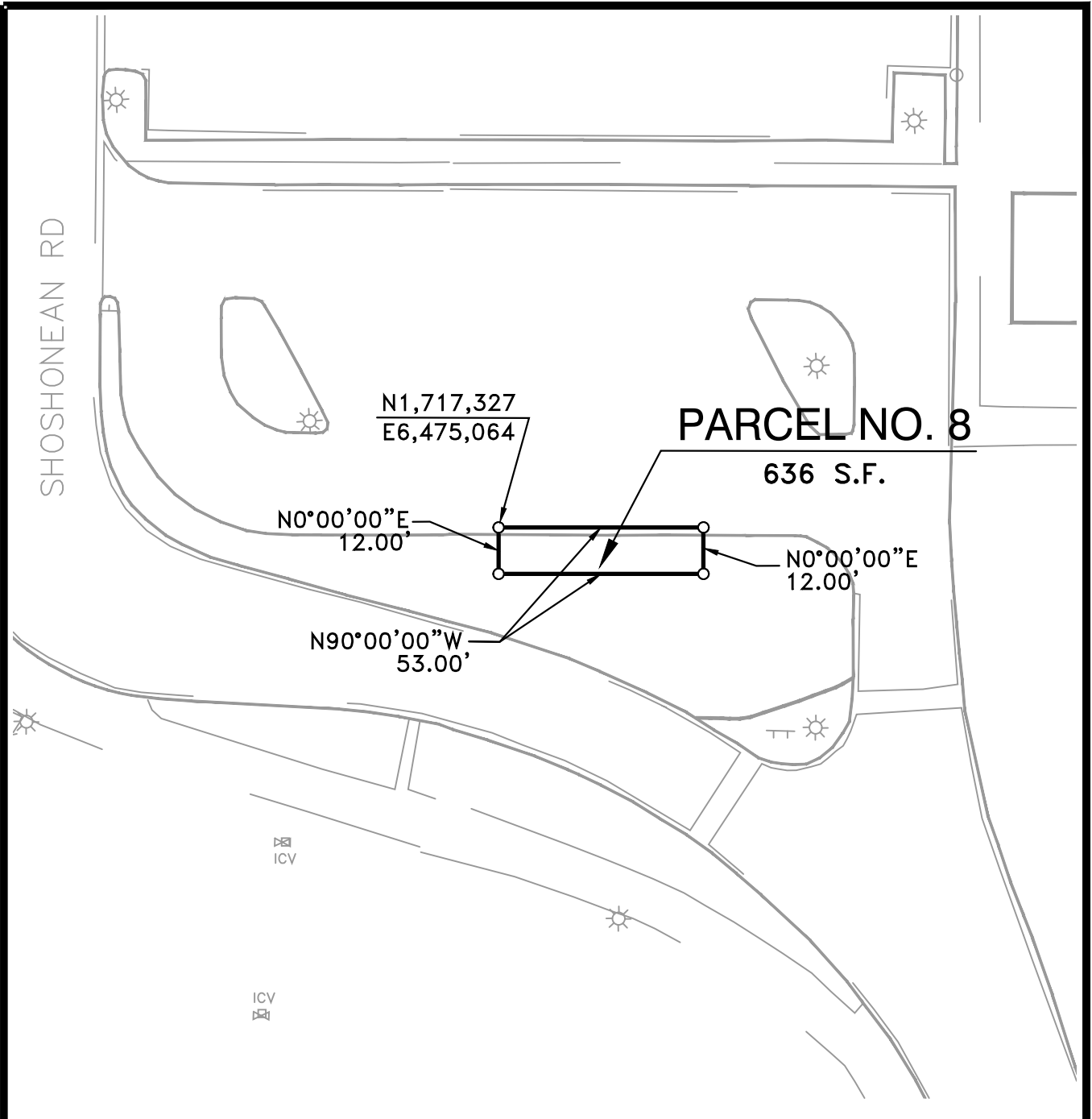


THE PORT OF LOS ANGELES
ENGINEERING DIVISION
425 S. PALOS VERDES STREET SAN PEDRO CA 90731-3309

DRAWING NUMBER
5-7347-7

POLAPROS_VER.1_12/96
5-7347.DWG

DRAFT



SHOSHONEAN RD

PARCEL NO. 8

636 S.F.

N1,717,327
E6,475,064

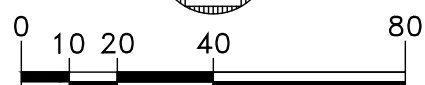
N0°00'00"E
12.00'

N0°00'00"E
12.00'

N90°00'00"W
53.00'

NOTE:

- 1) No substructures are shown on this drawing. Accurate substructure information must be obtained from lessees and L.A.H.D. engineering records.
- 2) Horizontal Datum is based on the North American Datum of 1983 (NAD 83), California Coordinate System, Zone 5, Feet.
- 3) All distances shown on this drawing are grid distances. To obtain a reasonable representation of the ground distance, divide the distance herein by the average scale factor of 1.000076.



GRAPHIC SCALE

SCALE: 1" = 40'	CHIEF OF DESIGN
DRAWN: C. VENTURA	ASSISTANT CHIEF OF HARBOR ENGINEER
CHECKED: D. RAASCH	
DESIGNED: C. VENTURA	
ENGR/ARCH	
CHIEF HARBOR ENGINEER	DATE

PERMIT MAP - AUTHORITY NO. TBD
METRO BIKE SHARE - CABRILLO BEACH

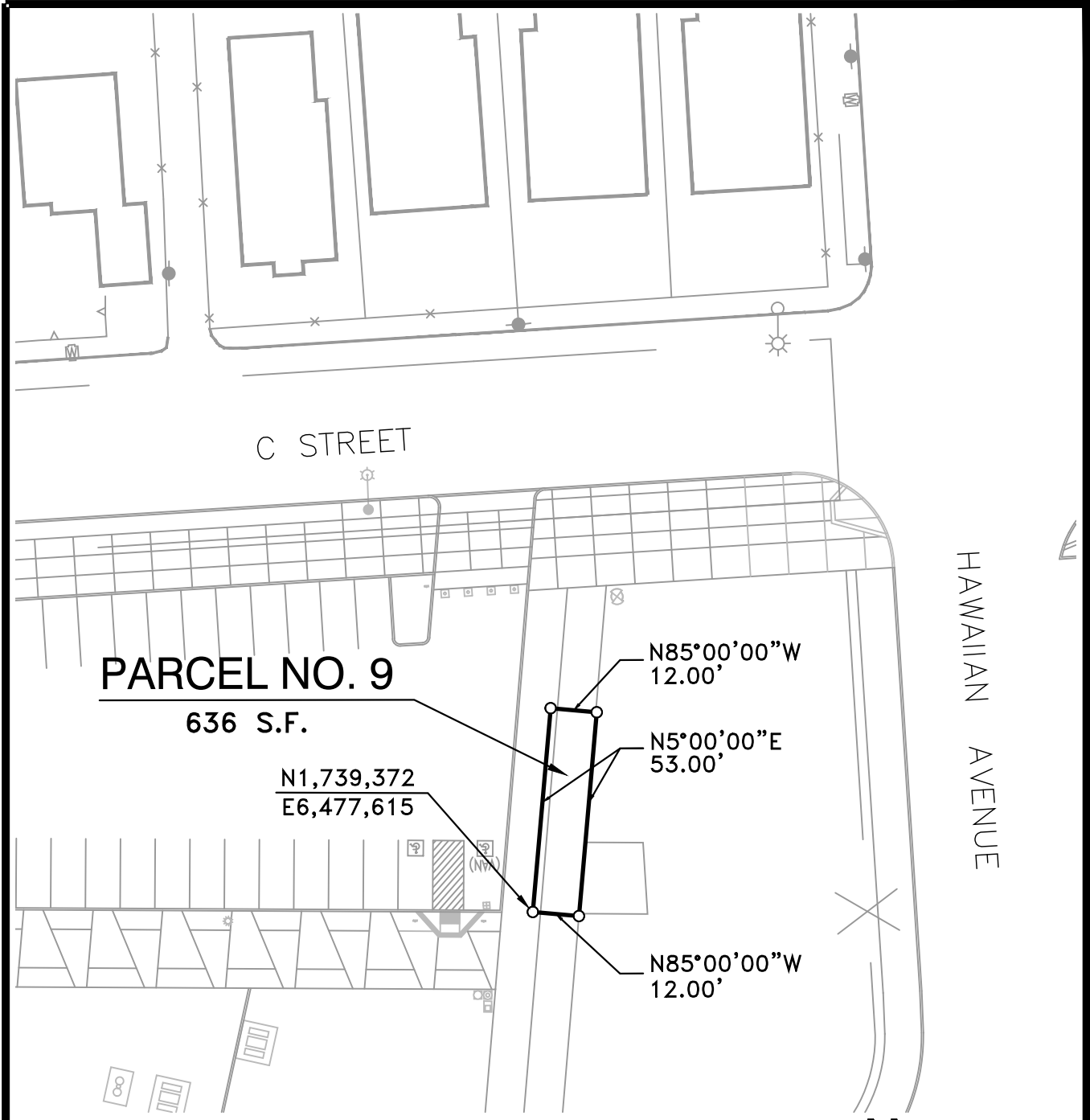


THE PORT OF LOS ANGELES
ENGINEERING DIVISION
 425 S. PALOS VERDES STREET SAN PEDRO CA 90731-3309

DRAWING NUMBER
5-7347-8

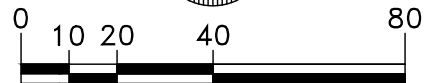
POLAPR05_VER.1_12/96
 5-7347.DWG

DRAFT



NOTE:

- 1) No substructures are shown on this drawing. Accurate substructure information must be obtained from lessees and L.A.H.D. engineering records.
- 2) Horizontal Datum is based on the North American Datum of 1983 (NAD 83), California Coordinate System, Zone 5, Feet.
- 3) All distances shown on this drawing are grid distances. To obtain a reasonable representation of the ground distance, divide the distance herein by the average scale factor of 1.000076.



GRAPHIC SCALE

SCALE: 1" = 40'	CHIEF OF DESIGN
DRAWN: C. VENTURA	ASSISTANT CHIEF OF HARBOR ENGINEER
CHECKED: D. RAASCH	
DESIGNED: C. VENTURA	
ENGR/ARCH	
	CHIEF HARBOR ENGINEER
	DATE

PERMIT MAP - AUTHORITY NO. TBD

METRO BIKE SHARE - WILMINGTON WATERFRONT PARK (WEST)

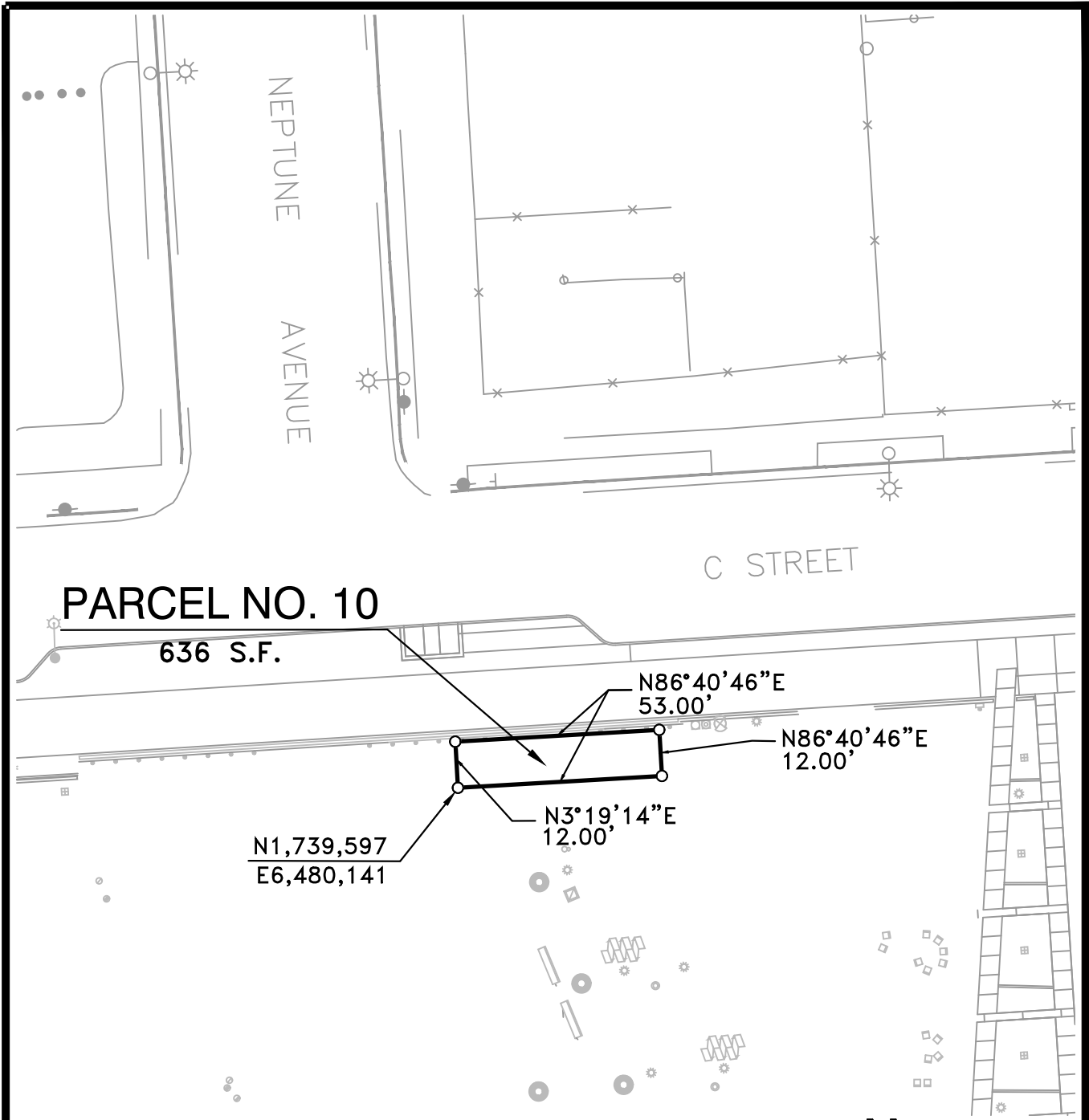


THE PORT OF LOS ANGELES
ENGINEERING DIVISION
425 S. PALOS VERDES STREET SAN PEDRO CA 90731-3309

DRAWING NUMBER
5-7347-9

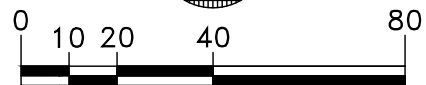
DRAFT

POLAPRO5_VER.1_12/96
5-7347.DWG



NOTE:

- 1) No substructures are shown on this drawing. Accurate substructure information must be obtained from lessees and L.A.H.D. engineering records.
- 2) Horizontal Datum is based on the North American Datum of 1983 (NAD 83), California Coordinate System, Zone 5, Feet.
- 3) All distances shown on this drawing are grid distances. To obtain a reasonable representation of the ground distance, divide the distance herein by the average scale factor of 1.000076.



GRAPHIC SCALE

SCALE: 1" = 40'	CHIEF OF DESIGN
DRAWN: C. VENTURA	ASSISTANT CHIEF OF HARBOR ENGINEER
CHECKED: D. RAASCH	
DESIGNED: C. VENTURA	
ENGR/ARCH	
	CHIEF HARBOR ENGINEER
	DATE

PERMIT MAP - AUTHORITY NO. TBD

METRO BIKE SHARE - WILMINGTON WATERFRONT PARK (EAST)



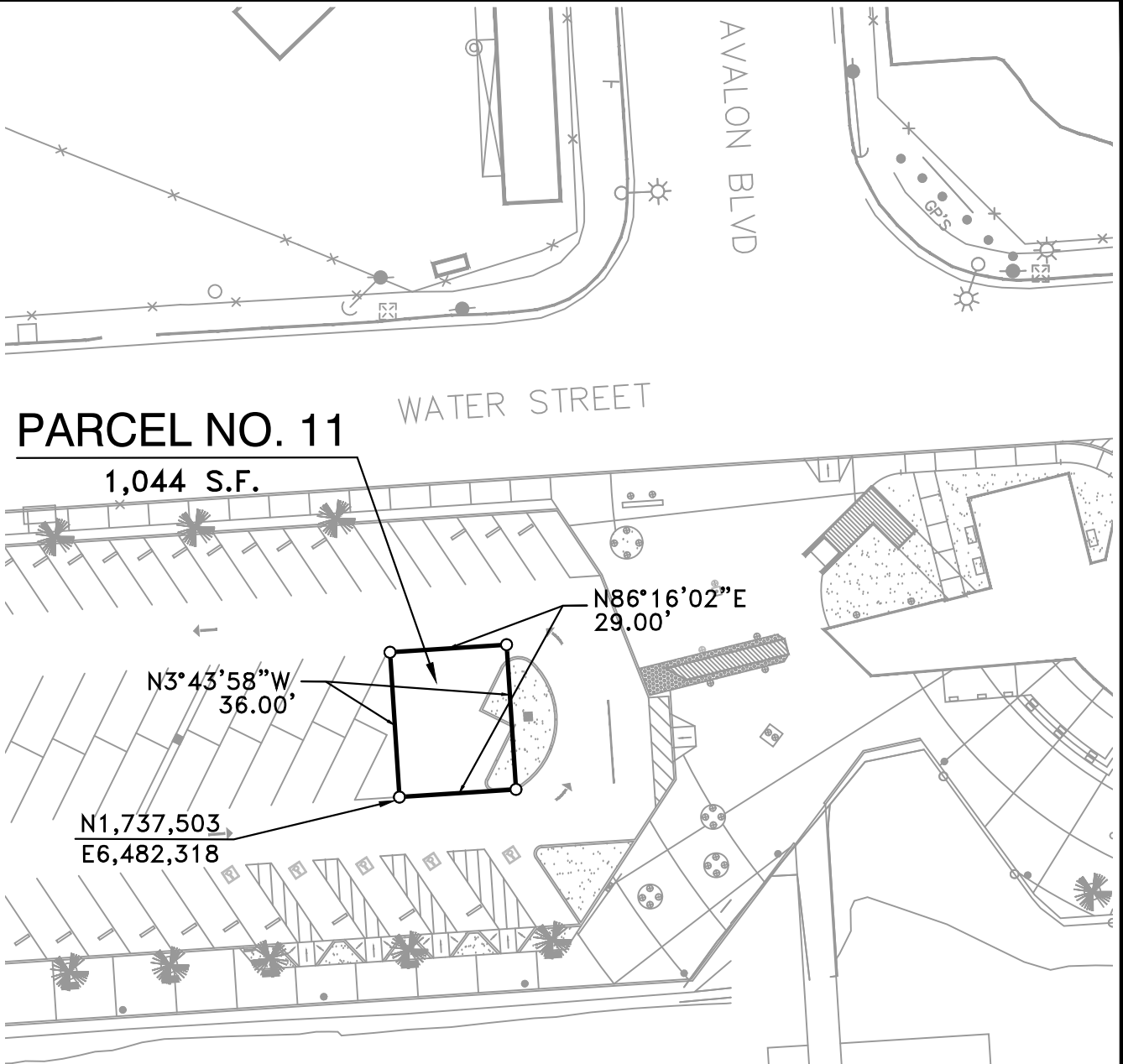
THE PORT OF LOS ANGELES
ENGINEERING DIVISION
425 S. PALOS VERDES STREET SAN PEDRO CA 90731-3309

DRAWING NUMBER

5-7347-10

DRAFT

POLAPROS_VER.1_12/96
5-7347.DWG



PARCEL NO. 11

1,044 S.F.

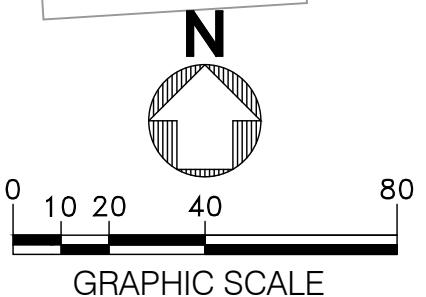
N3°43'58"W
36.00'

N86°16'02"E
29.00'

N1,737,503
E6,482,318

NOTE:

- 1) No substructures are shown on this drawing. Accurate substructure information must be obtained from lessees and L.A.H.D. engineering records.
- 2) Horizontal Datum is based on the North American Datum of 1983 (NAD 83), California Coordinate System, Zone 5, Feet.
- 3) All distances shown on this drawing are grid distances. To obtain a reasonable representation of the ground distance, divide the distance herein by the average scale factor of 1.000076.



SCALE: 1" = 40'	CHIEF OF DESIGN
DRAWN: C. VENTURA	ASSISTANT CHIEF OF HARBOR ENGINEER
CHECKED: D. RAASCH	
DESIGNED: C. VENTURA	
ENGR/ARCH	
	CHIEF HARBOR ENGINEER
	DATE

PERMIT MAP - AUTHORITY NO. TBD

METRO BIKE SHARE - BANNING'S LANDING



**THE PORT OF LOS ANGELES
ENGINEERING DIVISION**
425 S. PALOS VERDES STREET SAN PEDRO CA 90731-3309

DRAWING NUMBER
5-7347-11

POLAPRO5_VER.1_12/96
5-7347.DWG

DRAFT