

**Appendix B3**  
**Health Risk Assessment**

## Contents

1.0	Introduction .....	1
2.0	Emission Estimation Approach .....	3
2.1	Emissions Used for Cancer Risk.....	3
2.2	Emissions Used for Non-Cancer Hazard Indices.....	5
2.3	TAC Speciation.....	5
3.0	Receptors .....	9
4.0	Health Risk Calculation Approach .....	21
4.1	Model Selection .....	21
4.2	Toxicity Factors .....	21
4.3	Exposure Scenarios for Individual Cancer Risk .....	24
4.3.1	Population Cancer Burden Methodology.....	25
4.4	Exposure Scenarios for Non-Cancer Hazard Indices.....	26
5.0	Significance Criteria .....	27
6.0	Predicted Incremental Health Impacts.....	28
6.1	Revised Project .....	28
6.1.1	Individual Cancer Risk .....	33
6.1.2	Population Cancer Burden.....	36
6.1.3	Chronic and Acute Hazard Indices .....	36
6.2	FEIR Mitigated Scenario .....	36
6.2.1	Individual Cancer Risk .....	40
6.2.2	Population Cancer Burden.....	40
6.2.3	Chronic and Acute Hazard Indices .....	40
7.0	Risk Uncertainty .....	42
8.0	References .....	45

## List of Tables

Table B3-1.	PM <sub>10</sub> Speciation Profiles for the CEQA Baseline .....	6
Table B3-2.	PM <sub>10</sub> Speciation Profiles for the Project Scenarios .....	7
Table B3-3.	TOG Speciation Profiles .....	8
Table B3-4.	Sensitive Receptor Descriptions.....	13
Table B3-5.	Toxicity Factors Used In the HRA.....	22
Table B3-6.	Cancer Risk Exposure Assumptions by Receptor Type.....	24
Table B3-7.	Maximum Health Impacts Estimated for the Revised Project .....	28
Table B3-8.	Source Contributions to Cancer Risk at the Maximum Increment Receptors for the Revised Project .....	33

Table B3-9.	Maximum Health Impacts Estimated for the FEIR Mitigated Scenario.....	36
-------------	---	----

**List of Figures**

Figure B3-1.	HRA Modeled Receptor Locations (Far Field).....	10
Figure B3-2.	HRA Modeled Receptor Locations (Near Field).....	11
Figure B3-3.	HRA Modeled Sensitive Receptors.....	12
Figure B3-4.	Locations of Maximum Health Impacts Estimated for the Revised Project (far field) .....	29
Figure B3-5.	Locations of Maximum Health Impacts Estimated for the Revised Project (near field).....	30
Figure B3-6.	Isopleths of 30-Year Residential Cancer Risk for the Revised Project Minus Floating Future Baseline .....	34
Figure B3-7.	Locations of Maximum Health Impacts Estimated for the FEIR Mitigated Scenario (far field).....	37
Figure B3-8.	Locations of Maximum Health Impacts Estimated for the FEIR Mitigated Scenario (near field).....	38
Figure B3-9.	Isopleths of 30-Year Residential Cancer Risk for the FEIR Mitigated Scenario Minus Floating Future Baseline.....	40

# 1.0 Introduction

This appendix describes the methods and results of a health risk assessment (HRA) that evaluated potential public health effects from toxic air contaminant (TAC) emissions that would be generated during past and future operation of the China Shipping Container Terminal at Berths 97-109. TACs are compounds that are known or suspected to cause adverse health effects after short-term (acute) or long-term (chronic) exposure.

The following two scenarios were analyzed:

- **Revised Project:** this scenario is the proposed Project for which this Draft Revised Supplemental EIR (RSEIR) has been prepared. As described in Section 2 of the Draft RSEIR, the 2008 EIS/EIR for the China Shipping Container Terminal included a number of mitigation measures, some of which have yet to be fully implemented for various reasons. The Revised Project consists of continued future operation of the terminal under the new or modified mitigation measures described in Section 2.5.1 of the Draft RSEIR.
- **FEIR Mitigated Scenario:** this scenario represents operation of the terminal as it would have been and would be with timely implementation of all 2008 EIS/EIR mitigation measures. Analysis of the FEIR Mitigated Scenario is provided for informational purposes to compare to the Revised Project.

Health values associated with the two scenarios described above were analyzed relative to a 2008 Actual Baseline, which represents the actual emissions associated with China Shipping Terminal operation in 2008. As discussed in Section 3.1.4.2 of the RSEIR, the Terminal was in compliance with applicable 2008 EIS/EIR mitigation measures during the 2008 Baseline year. Because of their long exposure periods, individual cancer risk and population cancer burden were also analyzed relative to a Floating Future Baseline. The Floating Future Baseline assumes constant 2008 Terminal activity levels but uses emission factors that incorporate the post-2008 effects of current air quality regulations during the exposure periods.

For more details about the development of emissions for baselines and scenarios, see Section 2.0 in Appendix B1.

The HRA was prepared as a Tier 1 risk assessment in accordance with OEHHA's *Guidance Manual for Preparation of Health Risk Assessments* (OEHHA, 2015) and the SCAQMD's *Supplemental Guidelines for Preparing Risk Assessments for the Air Toxics "Hot Spots" Information and Assessment Act* (SCAQMD, 2020). The HRA includes an evaluation of four different types of health effects: individual incremental cancer risk, population cancer burden, chronic noncancer hazard index, and acute noncancer hazard index.

- Individual incremental cancer risk (referred to hereafter simply as "individual cancer risk") is the additional chance for a person to contract cancer after long-term exposure to Project TAC emissions. The exposure periods are 30 years for a resident or sensitive receptor and 25 years for an off-site worker.

- Population cancer burden is the expected number of additional cancer cases in the area where the individual lifetime (70-year) cancer risk from Project TAC emissions is greater than or equal to 1 in a million. It is the individual lifetime cancer risk multiplied by the population exposed to that level of risk, calculated at the census block level and summed over all modeled census blocks.
- The chronic hazard index (chronic HI) is a ratio of the annual average exposures to Project TAC emissions divided by chronic reference exposure levels. A chronic hazard index below 1.0 indicates that adverse noncancer health effects from long-term exposures are not expected.
- The acute hazard index (acute HI) is a ratio of maximum 1-hour average exposures to Project TAC emissions divided by acute reference exposure levels. An acute hazard index below 1.0 indicates that adverse noncancer health effects from short-term exposures are not expected.

The OEHHA HRA guidelines also provide a methodology for determining an 8-hour chronic hazard index, which evaluates repeated 8-hour exposures over a significant fraction of a lifetime (OEHHA, 2015). This health value is applicable primarily to off-site workers with work schedules that align with the emitting facility's operational schedule. Because the China Shipping Terminal operates 24 hours per day, the average 8-hour concentrations to which off-site workers would be exposed would be similar to the annual concentrations used to calculate the chronic hazard index. Moreover, the toxicity factors for the 8-hour chronic hazard index are less stringent and apply to fewer TACs than the toxicity factors for the chronic hazard index. As a result, the 8-hour chronic hazard indices associated with the scenarios would be less than the chronic hazard indices. Therefore, this HRA does not quantify 8-hour chronic hazard indices, and instead uses chronic hazard indices as a conservative health value for off-site workers.

The U.S. Environmental Protection Agency (USEPA) dispersion model AERMOD, version 24142 (USEPA, 2024), was used to predict ambient pollutant concentrations in the Project area. The Hotspots Analysis and Reporting Program (HARP) Air Dispersion Modeling and Risk Tool, version 22118 (CARB, 2022), was used to perform the health risk calculations based on output from the AERMOD dispersion model.

The HRA was developed using a five-step process to estimate incremental health impact results: (1) quantify Project and baseline emissions; (2) identify ground-level receptor locations that may be affected by emissions, including a regular receptor grid as well as specific sensitive receptor locations nearby such as schools, hospitals, elder care facilities, child care centers, and recreational areas; (3) perform dispersion modeling analyses to estimate ambient TAC concentrations at each receptor location; (4) characterize the potential health risks at each receptor location; and (5) evaluate incremental health risk values by comparing potential health risks posed by the scenarios relative to the Baseline. The following sections provide additional details on the methods used to complete the HRA.

## 2.0 Emission Estimation Approach

The following operational emission sources were included in the HRA:

- Container ships transiting between the SCAQMD overwater boundary and the Terminal (about 40 nautical miles), anchoring while waiting for an available berth, and hoteling while at berth. Ship emission sources include propulsion engines, auxiliary engines, and boilers.
- Tugboats used to assist ships while arriving and departing the Port. Tugboat emission sources include propulsion and auxiliary engines.
- Locomotives performing switching activities at the on-dock rail yard; and line-haul locomotives moving and idling at the on-dock rail yard and hauling trains to and from the yard. Locomotive emission sources include engine exhaust.
- Cargo handling equipment (CHE) working both on-terminal and handling China Shipping-related containers at the on-dock rail yard. CHE emission sources include engine exhaust.
- Trucks idling at the in-gate, out-gate, and on-terminal; driving on-terminal; and driving off-terminal along the primary truck routes. Truck emission sources include engine exhaust, tire wear, and brake wear.
- Worker vehicles driving both on- and off-terminal. Worker vehicle emission sources include engine exhaust, tire wear, and brake wear.

The TAC emissions used in this HRA were derived from the volatile organic compound (VOC) and particulate matter less than 10 micron (PM<sub>10</sub>) emissions estimated using the methodology and assumptions described in Section 3.1.4.1 and Appendix B1 of the RSEIR. VOC and PM<sub>10</sub> emissions were calculated for the 2008 Baseline year and the Project scenario analysis years 2012, 2014, 2018, 2019, 2020, 2021, 2022, 2023, 2026, 2036, and 2045.

Revised Project emissions from 2012 through 2023 represent actual emissions associated with China Shipping Terminal operations in those years. FEIR Mitigated Scenario emissions from 2012 through 2023 represent the emissions that would have occurred with timely implementation of all 2008 EIS/EIR mitigation measures. The Revised Project and FEIR Mitigated Scenario emissions in 2026, 2036, and 2045 account for the projected future growth in container throughput, the future reduction in emission factors for most equipment in response to existing regulations (i.e., phase-in of existing regulatory requirements and normal turnover of vehicles and equipment in which older vehicles and equipment are periodically replaced with newer, lower emitting models), and the mitigation measures applicable to each scenario.

### 2.1 Emissions Used for Cancer Risk

To estimate cancer risk impacts for the two scenarios, annual VOC and PM<sub>10</sub> emissions associated with Terminal operation were estimated for every year of several long-term exposure periods. The cancer risk exposure period durations were 30 years for residential and sensitive receptors, 25 years for occupational receptors, and 70 years for population cancer burden. For the two scenarios, this analysis assumed an initial year of 2019 for each exposure period. For example, the 30-year residential and sensitive receptor

exposure period was assumed to occur during the years 2019-2048. The 25-year occupational exposure period was assumed to occur during the years 2019-2043. The 70-year cancer burden exposure period was assumed to occur during the years 2019-2088.

Annual emissions between the RSEIR analysis years of 2023, 2026, 2036, and 2045 were calculated using linear interpolation. Because the 30-year and 70-year exposure periods would extend beyond the lease termination date of 2045, emissions after 2045 were conservatively assumed to remain at 2045 levels.

To better apprise the public and decision makers of the Project's environmental impacts, the predicted cancer risks for the scenarios were compared to the following two variations of the 2008 Baseline that use the same activity levels but different emission factors:

- The **Static Baseline** cancer risk calculation holds both the 2008 Terminal activity levels and the 2008 emission factors constant over the 25-, 30-, and 70-year exposure periods. In other words, the Static Baseline assumes the 2008 Actual Baseline emissions remain constant over the entire cancer risk exposure periods.
- The **Floating Future Baseline** cancer risk calculation holds the 2008 Terminal activity levels constant but allows the emission factors to change over the 25-, 30-, and 70-year exposure periods. The emission factors respond to the effects of current air quality regulations via phase-in of regulatory requirements and turnover of vehicles and equipment in which older vehicles and equipment are eventually replaced with newer, lower emitting models. The initial year of emission factors for each Floating Future Baseline exposure period was assumed to be 2008. For example, the 30-year residential and sensitive receptor exposure period for the Floating Future Baseline used emission factors associated with the years 2008-2037. The 25-year occupational exposure period used emission factors associated with the years 2008-2032. The 70-year cancer burden exposure period used emission factors associated with the years 2008-2077.

The Floating Future Baseline cancer risks are lower than the Static Baseline cancer risks because emission factors for port-related equipment generally decline over time in response to air quality regulations and assumptions regarding equipment fleet turnover. This declining trend in emission factors is accounted for in the Floating Future Baseline but not the Static Baseline. As a result, the Project cancer risk increments relative to the Floating Future Baseline are generally greater than the increments relative to the Static Baseline.

The use of both the Static Baseline and Floating Future Baseline for cancer risk helps to resolve the complication of evaluating the Terminal during a fixed point in time (i.e., 2008 Baseline conditions) for a health impact that is based on decades-long exposure periods. This complication does not exist for the chronic and acute hazard indices because they are based on modeled TAC concentrations of one year and one hour, respectively, both of which fit within the 2008 Baseline period. Therefore, the Floating Future Baseline was used only for cancer risk.

## 2.2 Emissions Used for Non-Cancer Hazard Indices

Chronic and acute noncancer hazard indices for the scenarios were based on the annual and peak hour operational emissions of VOC and PM<sub>10</sub> for the analysis years 2012, 2014, 2018, 2019, 2020, 2021, 2022, 2023, 2026, 2036, and 2045. Because prior Port projects have shown that the chronic and acute hazard indexes are unlikely to exceed the significance thresholds, a conservative screening approach was used where each AERMOD source was modeled with its maximum emissions from all analysis years even if the maximum emissions would not occur at the same time as other sources.

Chronic and acute noncancer hazard indices for the 2008 Baseline were based on the actual 2008 annual and peak hour VOC and PM<sub>10</sub> emissions. As explained in the previous section, calculation of a Floating Future Baseline was not necessary for the evaluation of chronic and acute hazard indices because the annual and peak hour averaging periods fit within the 2008 baseline period.

Appendix B1 of this RSEIR documents the overall emission calculation methodology and assumptions for the Project and Baseline scenarios.

## 2.3 TAC Speciation

Diesel internal combustion (IC) engines represent the biggest source of TAC emissions associated with Terminal operation. Diesel IC engine sources include container ship propulsion and auxiliary engines, tugboats, locomotives, diesel CHE, and diesel trucks. For the determination of cancer risk and chronic hazard indices, OEHHA and CARB use diesel particulate matter (DPM) from IC engines as representative of total diesel exhaust (CARB, 2025). In other words, the toxicity factors for DPM that were established by OEHHA and CARB account for the various toxic species contained in total diesel IC engine exhaust. Therefore, it was not necessary to speciate diesel IC engine exhaust into its chemical components for the determination of cancer risk and chronic noncancer hazard indices.

OEHHA and CARB have not established acute toxicity factors for DPM. Therefore, peak hour VOC and PM<sub>10</sub> emissions from diesel IC engine sources were speciated into their individual TAC components for the determination of acute hazard indices.

Sources other than diesel IC engines include container ship boilers, alternative-fueled CHE, LNG trucks, gasoline-fueled worker vehicles, and vehicle tire and brake wear. For these sources, VOC and PM<sub>10</sub> emissions were speciated into their individual TAC components for the determination of cancer risk, chronic hazard indices, and acute hazard indices.

The speciation profiles used in the HRA were developed by CARB (2024). Tables B3-1 and B3-2 present the speciation profiles that were used to convert PM<sub>10</sub> emissions into individual TACs for the CEQA baseline and Project scenarios, respectively. Table B3-3 presents the speciation profiles that were used to convert total organic gas (TOG) emissions into individual TACs. Prior to speciation, VOC emissions were converted to TOG using factors provided by CARB (2024).

The speciation profiles were selected after consultation with CARB (Wenli Yang, personal communication, February 27, 2025). The first three PM<sub>10</sub> profiles listed in each

of Tables B3-1 and B3-2, which are for diesel IC engine sources and therefore were used only for the acute HI, vary by year as statewide on-road and off-road diesel engine fleets respond to current regulations. Accordingly, for the CEQA baseline, the analysis used the profiles closest to the year 2008. Specifically, Profile 6099 is representative of 2009 off-road diesel vehicle exhaust, and Profiles 7101 and 7102 are representative of 2010 heavy duty diesel truck exhaust. For the Project scenarios, the analysis selected the profiles with the greatest acute HI toxicities over the range of analysis years (2012-2045). They include Profile 6299 (2029 off-road diesel vehicle exhaust), Profile 7212 (2021 heavy duty diesel trucks in cruise mode), and Profile 7451 (2045 heavy duty diesel trucks in idle mode).

The TOG speciation profiles in Table B3-3 do not vary by year and therefore were used for the CEQA Baseline and Project scenarios.

**Table B3-1. PM<sub>10</sub> Speciation Profiles for the CEQA Baseline**

Toxic Air Contaminant <sup>a</sup>	HARP TAC ID	Speciation Profile and TAC Weight Fraction								
		Profile 6099: 2009 off-road diesel vehicle exhaust <sup>b,c</sup>	Profile 7102: 2010 heavy duty diesel truck - cruise <sup>b,c</sup>	Profile 7101: 2010 heavy duty diesel truck - idle <sup>b,c</sup>	Profile 123: Stat. I.C. engine - gas	Profile 4251: Marine vessels - MGO (1% sulfur) <sup>b</sup>	Profile 112: Fuel combustion - distillate	Profile 400: Gasoline vehicles - catalyst	Profile 473: Brake wear	Profile 472: Tire wear
Arsenic	7440382	0.000002	0.00001	0.000003	0	0	0.005418	0	0.00001	0
Cadmium	7440439	0.000031	0.000022	0.000069	0	0	0.0005	0	0	0
Chlorine	7782505	0.000065	0.000016	0.000003	0.07	0	0	0.07	0.0015	0.0078
Chromium III <sup>d</sup>	16065831	0.0000057	0.0000238	0.0000114	0.000475	0	0.0051471	0.000475	0.00114	0.0000285
Chromium VI <sup>d</sup>	18540299	0.0000003	0.0000013	0.0000006	0.000025	0	0.0002709	0.000025	0.00006	0.0000015
Cobalt	7440484	0.000004	0.000008	0.000018	0.0005	0	0	0.0005	0	0
Copper	7440508	0.000058	0.000036	0.000117	0.0005	0	0	0.0005	0.011485	0.00049
Lead	7439921	0.000009	0.000005	0.000032	0	0	0.0055	0	0.00005	0.00016
Manganese	7439965	0.000061	0.000011	0.000019	0.0005	0	0	0.0005	0.0017	0.0001
Mercury	7439976	0.000006	0.000003	0.000054	0	0	0	0	0	0
Nickel	7440020	0.000008	0.000025	0.000033	0.0005	0	0.0005	0.0005	0.00066	0.00005
Selenium	7782492	0.000008	0.000002	0.00001	0	0	0.0005	0	0.00002	0.00002
Sulfates	9960	0.005266	0.023221	0.019745	0.45	0.08	0.25	0.45	0.0334	0.0025
Vanadium	7440622	0.000001	0.000006	0.000014	0	0	0	0	0.00066	0
Applicable sources:		Locomotives, CHE, harbor craft (acute HI only)	Diesel trucks driving (acute HI only)	Diesel trucks idling (acute HI only)	LNG trucks, LNG/ LPG/ CNG/ propane CHE	Ship main and auxiliary engines (acute HI only)	Ship boilers	Gasoline automobiles	Brake wear	Tire wear

Source: CARB, 2024.

Notes:

<sup>a</sup> Only TACs that have toxicity values from the CARB Consolidated Health Value Table (CARB, 2025) are shown in the table.

<sup>b</sup> Profiles No. 4251, 6099, 7101, and 7102 are associated with diesel IC engines and therefore were used only for the determination of the acute HI. For the determination of cancer risk and the chronic HI, the CARB Consolidated Health Value Table provides toxicity factors for diesel particulate matter (DPM) that are representative of diesel IC engine exhaust as a whole (CARB, 2025).

<sup>c</sup> Profiles No. 6099, 7101, and 7102 are representative of analysis years closest to the baseline year of 2008; therefore, they were used for baseline emissions.

<sup>d</sup> Hexavalent chromium (Chromium VI) is assumed to be 5 percent of total chromium, according to CARB's AB2588 Technical Support Document (CARB 1989), page 57. The remainder of total chromium (95 percent) is assumed to be Chromium III.

**Table B3-2. PM<sub>10</sub> Speciation Profiles for the Project Scenarios**

Toxic Air Contaminant <sup>a</sup>	HARP TAC ID	Speciation Profile and TAC Weight Fraction								
		Profile 6299: 2029 off-road diesel vehicle exhaust <sup>b,c</sup>	Profile 7212: 2021 heavy duty diesel truck - cruise <sup>b,c</sup>	Profile 7451: 2045 heavy duty diesel truck - idle <sup>b,c</sup>	Profile 123: Stat. I.C. engine - gas	Profile 4251: Marine vessels - MGO (1% sulfur) <sup>b</sup>	Profile 112: Fuel combustion - distillate	Profile 400: Gasoline vehicles - catalyst	Profile 473: Brake wear	Profile 472: Tire wear
Arsenic	7440382	0.000002	0.000005	0	0	0	0.005418	0	0.00001	0
Cadmium	7440439	0.000022	0.000005	0	0	0	0.0005	0	0	0
Chlorine	7782505	0.000048	0.000152	0.000387	0.07	0	0	0.07	0.0015	0.0078
Chromium III <sup>d</sup>	16065831	0.0001596	0.0004285	0.0002793	0.000475	0	0.0051471	0.000475	0.00114	0.0000285
Chromium VI <sup>d</sup>	18540299	0.0000084	0.0000226	0.0000147	0.000025	0	0.0002709	0.000025	0.00006	0.0000015
Cobalt	7440484	0.000004	0.000001	0	0.0005	0	0	0.0005	0	0
Copper	7440508	0.000139	0.000268	0.000142	0.0005	0	0	0.0005	0.011485	0.00049
Lead	7439921	0.000009	0.000004	0.000006	0	0	0.0055	0	0.00005	0.00016
Manganese	7439965	0.000042	0.000054	0.00013	0.0005	0	0	0.0005	0.0017	0.0001
Mercury	7439976	0.000007	0.000001	0.000001	0	0	0	0	0	0
Nickel	7440020	0.000008	0.000059	0.000123	0.0005	0	0.0005	0.0005	0.00066	0.00005
Selenium	7782492	0.000007	0.000005	0.000013	0	0	0.0005	0	0.00002	0.00002
Sulfates	9960	0.100739	0.248118	0.014446	0.45	0.08	0.25	0.45	0.0334	0.0025
Vanadium	7440622	0.000001	0.000005	0.000002	0	0	0	0	0.00066	0
Applicable sources:		Locomotives, CHE, harbor craft (acute HI only)	Diesel trucks driving (acute HI only)	Diesel trucks idling (acute HI only)	LNG trucks, LNG/ LPG/ CNG/ propane CHE	Ship main and auxiliary engines (acute HI only)	Ship boilers	Gasoline automobiles	Brake wear	Tire wear

Source: CARB, 2024.

Notes:

<sup>a</sup> Only TACs that have toxicity values from the CARB Consolidated Health Value Table (CARB, 2025) are shown in the table.

<sup>b</sup> Profiles No. 4251, 6299, 7212, and 7451 are associated with diesel IC engines and therefore were used only for the determination of the acute HI. For the determination of cancer risk and the chronic HI, the CARB Consolidated Health Value Table provides toxicity factors for diesel particulate matter (DPM) that are representative of diesel IC engine exhaust as a whole (CARB, 2025).

<sup>c</sup> Profiles No. 6299, 7212, and 7451 have the highest acute hazard index source strengths over the Revised Project analysis years (2012-2045), so these profiles were conservatively used for revised project emissions in all analysis years.

<sup>d</sup> Hexavalent chromium (Chromium VI) is assumed to be 5 percent of total chromium, according to CARB's AB2588 Technical Support Document (CARB 1989), page 57. The remainder of total chromium (95 percent) is assumed to be Chromium III.

**Table B3-3. TOG Speciation Profiles**

Toxic Air Contaminant <sup>c</sup>	HARP TAC ID	Speciation Profile and TAC Weight Fraction <sup>a</sup>			
		Profile 818: Diesel IC Engines <sup>b</sup>	Profile 504: Boilers	Profile 2303: Gasoline Automobiles	Profile 719: Natural Gas IC Engines
Acetaldehyde	75070	0.0735	0	0.009	0.0003
Acrolein	107028	0	0	0.000014	0
Benzene	71432	0.02	0.0216	0.0389	0.0011
1,3-Butadiene	106990	0.0019	0	0.0024	0
Chlorobenzene	108907	0	0.0005	0	0
Ethyl benzene	100414	0.0031	0.0007	0.0112	0.0001
Formaldehyde	50000	0.1471	0.001	0.0215	0.0081
Hexane	110543	0.0016	0.0159	0.00777615	0.0002
Isoprene	78795	0	0	0.00066677	0
Methanol	67561	0.0003	0	0.0002	0
Methyl ethyl ketone	78933	0.0148	0	0.0015	0
Methyl tert-butyl ether	1634044	0	0	0.00467993	0
Naphthalene	91203	0.0009	0.0007	0.0037	0
Propylene	115071	0.026	0.0456	0.022	0.0169
Styrene	100425	0.0006		0.0022	
Toluene	108883	0.0147	0.0215	0.0475	0.0004
Trimethylbenzenes	25551137	0.0084	0.0068	0.04562389	0.0004
Xylenes	1330207	0.0105	0.011	0.05073775	0.0004
Applicable sources:		Diesel trucks, locomotives, CHE, harbor craft, ship main and auxiliary engines (acute HI only)	Ship boilers	Gasoline automobiles	LNG trucks, LNG/ LPG/ CNG/ propane CHE

Source: CARB, 2024.

Notes:

<sup>a</sup> VOC emissions were converted to TOG by dividing by the following VOC/TOG ratios: 0.8794 for Profile 818; 0.946 for Profile 504; 0.6853 for Profile 2303; and 0.0931 for Profile 719 (CARB, 2024).

<sup>b</sup> Profile No. 818 is associated with diesel IC engines and therefore was used only for the determination of the acute hazard index. For the determination of cancer risk and the chronic hazard index, DPM emissions were used without speciation because CARB provides toxicity factors for DPM as a whole (CARB, 2025).

<sup>c</sup> Only TACs that have toxicity values from the CARB Consolidated Health Value Table (CARB, 2025) are shown in the table.

## 3.0 Receptors

The HRA modeled TAC concentrations and health effects at 2,149 locations (receptors) throughout the Project area, including the locations of potential exposure for residents, offsite workers, and sensitive members of the public. Sensitive receptor groups include children, the elderly, and the acutely and chronically ill. The locations of sensitive receptor groups include schools, child care centers, elder care facilities, and hospitals. For health risk assessment purposes, LAHD also treats recreational areas, such as parks, marinas, and public waterfront areas, as sensitive receptors.

Initial model runs were conducted with a 26 by 24 kilometer (km) coarse grid, with receptors placed 2,000 meters (m) apart, covering the Project vicinity. Embedded within this first grid was a second coarse grid, with receptors placed 1,000 m apart, covering an area 8 km x 11 km. Also embedded within these first two grids was a third grid, with receptors placed 250 m apart surrounding the modeled sources, within an area approximately 7 km x 10.5 km. Receptor points were also placed along the Terminal boundary at 50-meter intervals and directly on specific sensitive receptors, including schools, child care centers, elder care facilities, hospitals, and recreational areas. Multiple fine grids, with receptors positioned every 50 meters, were placed over the maximum coarse grid receptors to obtain HRA results to the nearest 50 meters.

Figures B3-1 and B3-2 show the full set of receptor points modeled in the HRA. Figure B3-3 shows only the sensitive receptors modeled in the HRA; the figure is paired with Table B3-4, which provides descriptions and street addresses of the sensitive receptors.

Maximally exposed individual (MEI) locations were selected from the modeled receptor grids for three different receptor types: residential, occupational, and sensitive. The selection methodology for the MEI locations was:

- The residential MEI was selected from all receptors in residential or residentially-zoned areas that are not located within modeled roadways or railways. Marinas where live-aboards may be present were treated as valid residential receptors.
- The occupational MEI was selected from all receptors on or outside the China Shipping Terminal boundary that are not located on water or within modeled roadways or railways.
- The sensitive MEI was selected from all modeled schools, child care centers, elder care facilities, hospitals, and recreational areas such as parks, marinas, and public waterfront areas.

Figure B3-1. HRA Modeled Receptor Locations (Far Field)

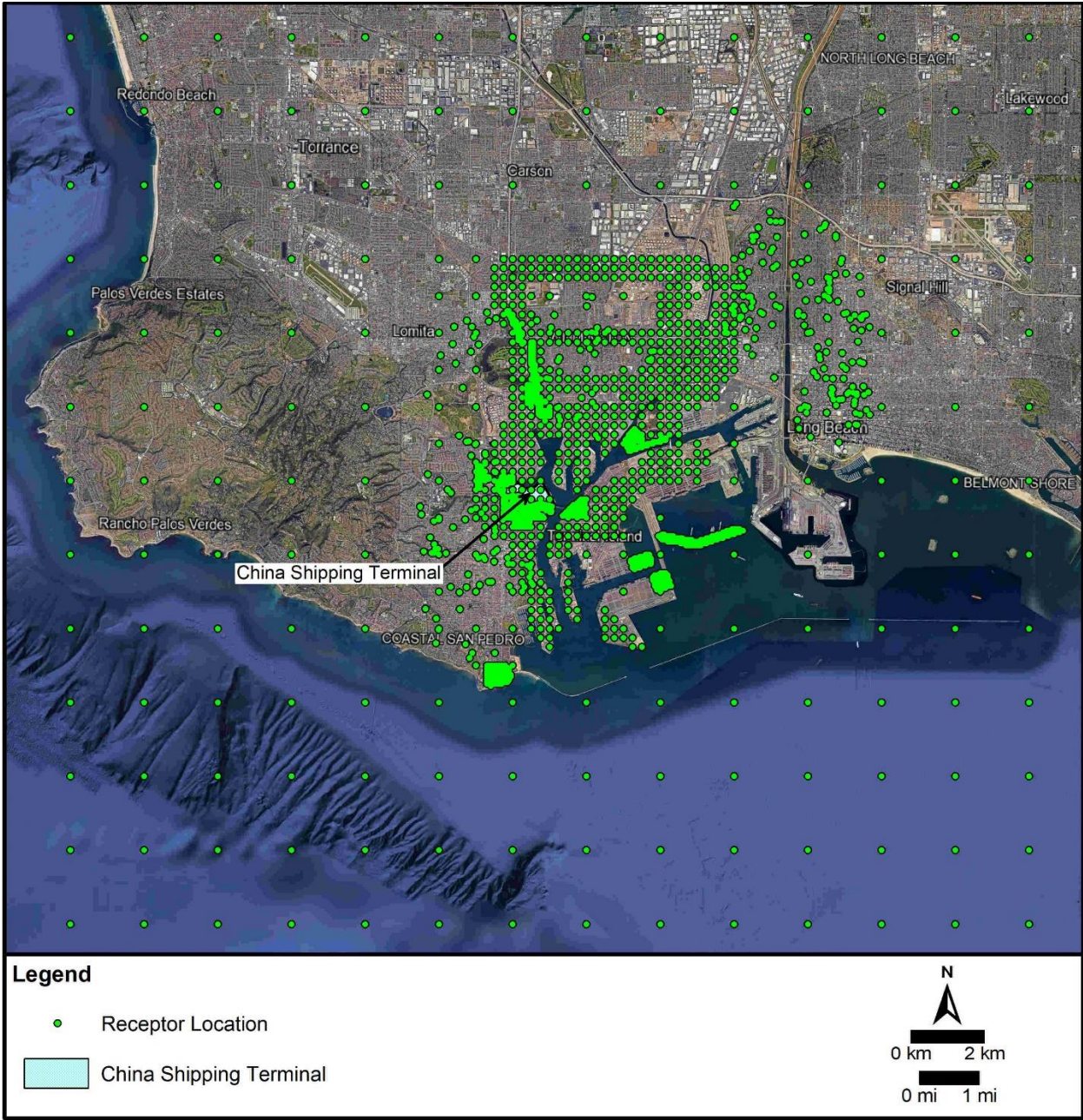


Figure B3-2. HRA Modeled Receptor Locations (Near Field)

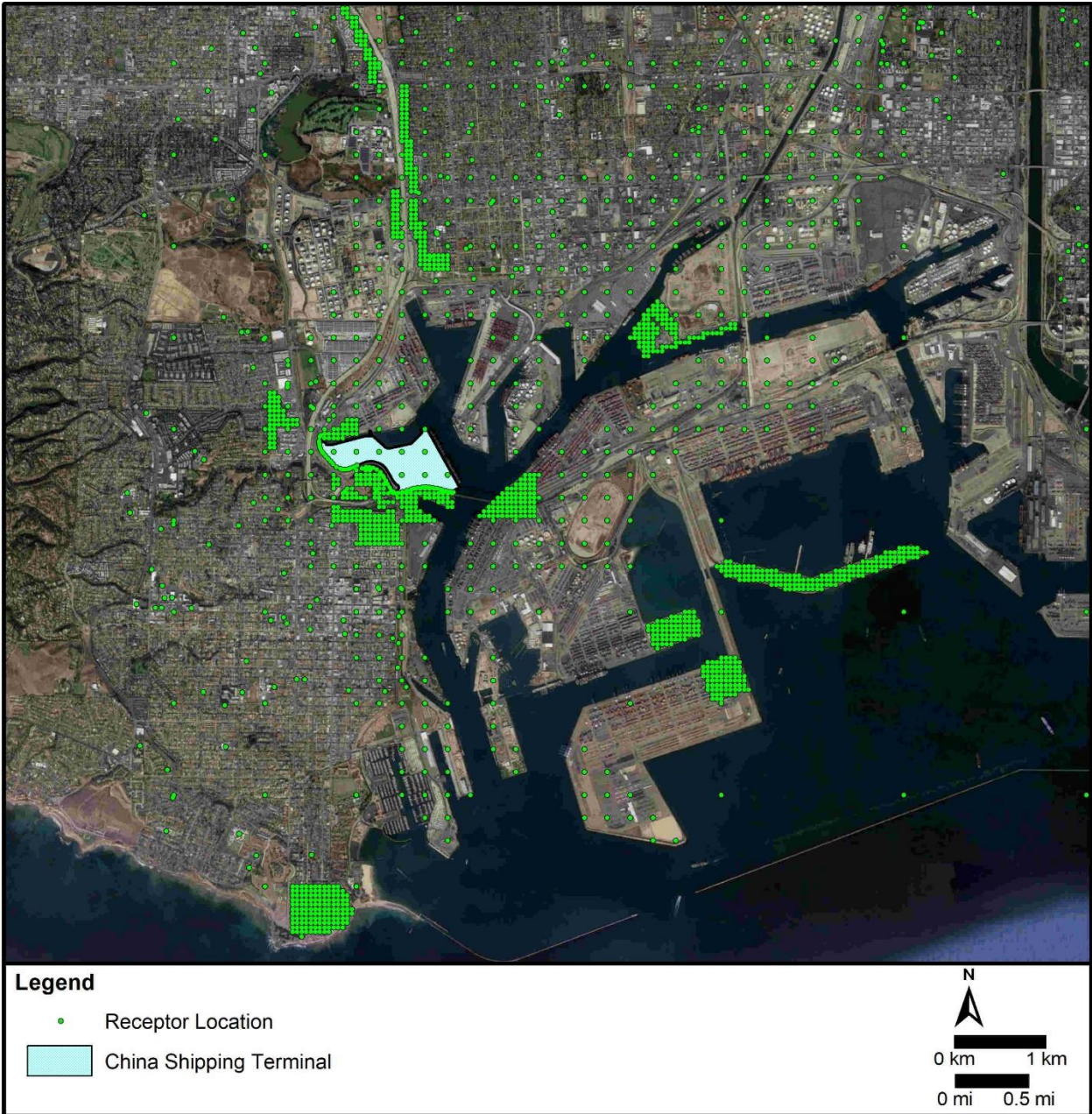
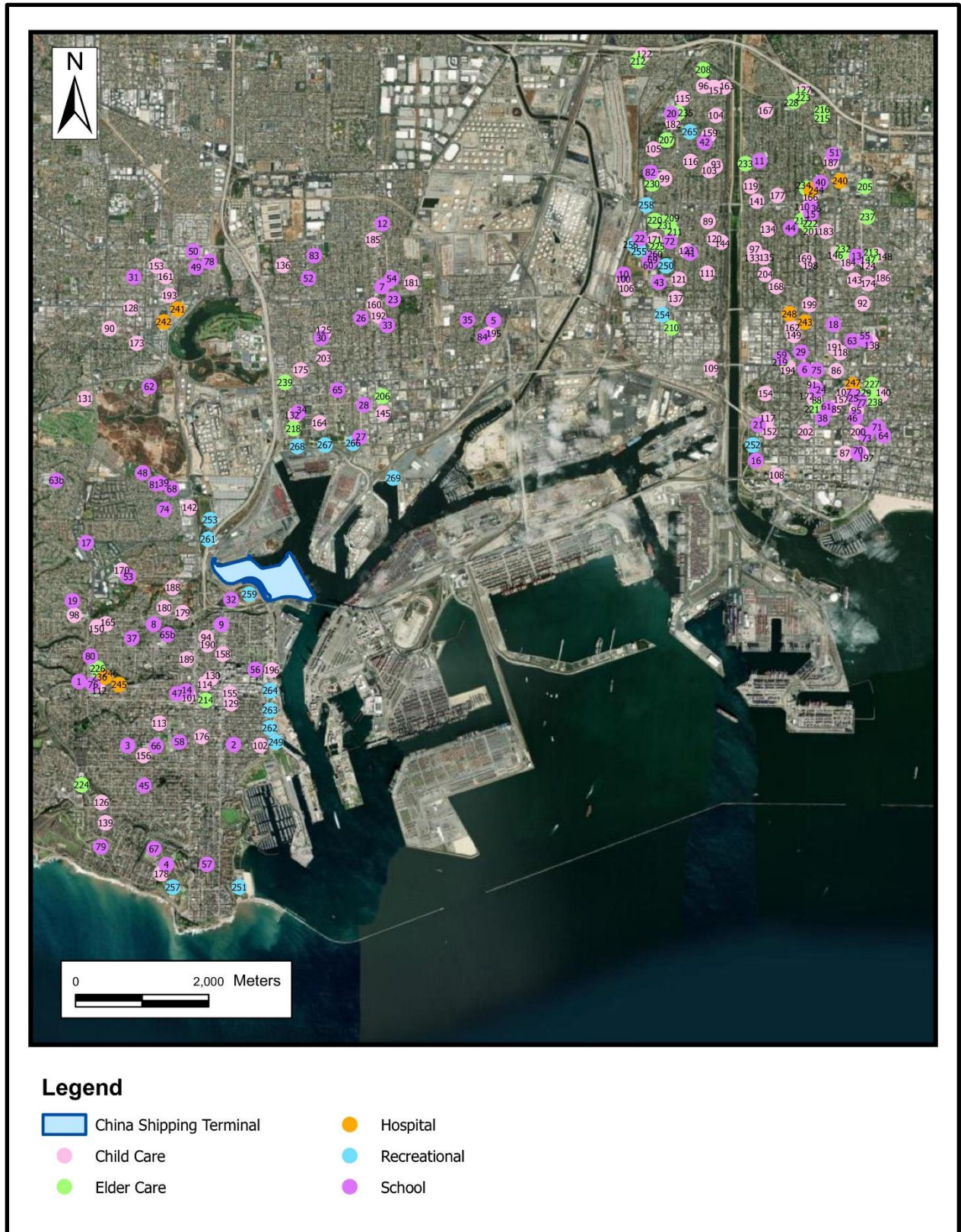


Figure B3-3. HRA Modeled Sensitive Receptors



**Table B3-4. Sensitive Receptor Descriptions**

No. <sup>a</sup>	Receptor Description	Street Address	City, State, Zip	Category
1	7th Street Elementary School	1570 W. 7th St	San Pedro, CA 90731	School
2	15th Street Elementary School	1527 Mesa St	San Pedro, CA 90731	School
3	Academy of the Two Hearts School	1540 S. Walker Ave	San Pedro, CA 90731	School
4	Angel's Gate High School	3607 S. Gaffey St	San Pedro, CA 90731	School
5	Apostolic Faith Center/Apostolic Faith Academy	1530 E Robidoux St	Wilmington, CA 90744	School
6	Artesia Well Preparatory Academy	1235 Pacific Ave	Long Beach, CA 90813	School
7	Avalon High School	1425 N Avalon Blvd	Wilmington, CA 90744	School
8	Bandini Street Elementary School	425 N. Bandini St	San Pedro, CA 90731	School
9	Barton Hill Elementary School	423 N. Pacific Ave	San Pedro, CA 90731	School
10	Bethune Mary School	2101 San Gabriel Ave	Long Beach, CA 90810	School
11	Birney Elementary School	710 W. Spring St	Long Beach, CA 90806	School
12	Broad Avenue Elementary School	24815 Broad Ave	Wilmington, CA 90744	School
13	Burnett Elementary	565 East Hill St.	Long Beach, CA 90806	School
14	Cabrillo Avenue Elementary School	732 S. Cabrillo Ave	San Pedro, CA 90731	School
15	Cambodian Christian	2474 Pacific Ave	Long Beach, CA 90806	School
16	Cesar Chavez Elementary	730 West Third St.	Long Beach, CA 90802	School
17	Christ Lutheran Elementary School	28850 S. Western Ave	Rancho Palos Verdes, CA 90275	School
18	Colegio New City	1637 Long Beach Blvd	Long Beach, CA 90813	School
19	Crestwood Street Elementary School	1946 W. Crestwood St	Rancho Palos Verdes, CA 90275	School
20	Daniel Webster Elementary School and Head Start	1755 W 32nd Way	Long Beach, CA 90810	School
21	Edison Elementary	625 Maine Ave.	Long Beach, CA 90802	School
22	Elizabeth Hudson Elementary School and Development Center Daycare	2335 Webster Ave	Long Beach, CA 90810	School
23	First Baptist Christian School	1360 Broad Ave	Wilmington, CA 90744	School
24	First Baptist Church School	1000 Pine Ave	Long Beach, CA 90813	School
25	First Lutheran Day Care, Preschool and Elementary School	946 Linden Ave	Long Beach, CA 90813	School
26	Fries Ave. Elementary School	1301 N Fries Ave	Wilmington, CA 90744	School
27	Wilmington Skills Center	217 Island Ave	Wilmington, CA 90744	School
28	George de la Torre Jr. Elementary School	500 Island Ave	Wilmington, CA 90744	School
29	George Washington Middle School	1450 Cedar Ave	Long Beach, CA 90813	School
30	Gulf Avenue Elementary School	828 W. L St	Wilmington, CA 90744	School
31	Harbor City Elementary School	1508 254th St	Harbor City, CA 90710	School
32	Harbor Occupational Center	740 N. Pacific Ave.	San Pedro, CA 90731	School
33	Harry Bridges Span School	1235 Broad Ave	Wilmington, CA 90744	School
34	Hawaiian Avenue Elementary School	540 Hawaiian Ave	Wilmington, CA 90744	School
35	Holy Family Preschool and Elementary School	1122 E Robidoux St	Wilmington, CA 90744	School

<b>No. <sup>a</sup></b>	<b>Receptor Description</b>	<b>Street Address</b>	<b>City, State, Zip</b>	<b>Category</b>
36	Holy Innocents Elementary School	2500 Pacific Ave	Long Beach, CA 90806	School
37	Holy Trinity Elementary School	1226 W. Santa Cruz St	San Pedro, CA 90732	School
38	International Elementary	700 Locust Ave	Long Beach, CA 90813	School
39	J F Cooper High School	2210 N. Taper Ave	San Pedro, CA 90731	School
40	Jackie Robinson Academy	2750 Pine Ave	Long Beach, CA 90806	School
41	James Garfield Elementary School / LBUSD Child Development Center	2240 Baltic Ave	Long Beach, CA 90810	School
42	John Muir Elementary School	3038 Delta Ave	Long Beach, CA 90810	School
43	Juan Rodriguez Cabrillo High School	2001 Santa Fe Ave	Long Beach, CA 90810	School
44	Lafayette Elementary School	2445 Chestnut Ave	Long Beach, CA 90806	School
45	Leland Street Elementary School	2120 S. Leland St	San Pedro, CA 90731	School
46	Long Beach Montessori School	525 E. 7th St	Long Beach, CA 90813	School
47	Mary Star of the Sea Elementary School	717 S. Cabrillo Ave	San Pedro, CA 90731	School
48	Mary Star of the Sea High School	810 W. 8th St	San Pedro, CA 90731	School
49	Normont Elementary School	1001 253rd St	Harbor City, CA 90710	School
50	Normont Terrace Childrens Center	25028 Petroleum Ave	Harbor City, CA 90710	School
51	Oakwood Academy	2951 Long Beach Blvd	Long Beach, CA 90806	School
52	Pacific Harbor Christian School	1530 N. Wilmington Blvd	Wilmington, CA 90744	School
53	Park Western Place Elementary School	1214 Park Western Place	San Pedro, CA 90732	School
54	Phineas Banning Senior High School	1527 Lakme Ave	Wilmington, CA 90744	School
55	Polytechnic High School	1600Atlantic Ave.	Long Beach, CA 90813	School
56	Port of Los Angeles High School	250 W 5th St	San Pedro, CA 90731	School
57	Pt. Fermin Elementary School	3333 Kerckhoff Ave	San Pedro, CA 90731	School
58	R H Dana Middle School	1501 S. Cabrillo	San Pedro, CA 90731	School
59	Regency High School	490 W. 14th Street	Long Beach, CA 90813	School
60	Reid Continuation High School	2153 W Hill St	Long Beach, CA 90810	School
61	Renaissance High School for the Arts	235 East Eighth St.	Long Beach, CA 90813	School
62	Rolling Hills Preparatory School	1 Rolling Hills Prep Way	San Pedro, CA 90732	School
63	Roosevelt Elementary	1574 Linden Ave.	Long Beach, CA 90813	School
63b	Rudecinda Sepulveda Dodson Middle School	28014 S Montereyna Dr.	Rancho Palos Verdes, CA 90275	School
64	Saint Anthony Preschool / Elementary	855 East Fifth St.	Long Beach, CA 90802	School
65	Saints Peter & Paul School	706 Bay View Ave	Wilmington, CA 90744	School
65b	San Pedro Adult Learning Center	950 W Santa Cruz St.	San Pedro, CA 90731	School
66	San Pedro High School	1001 W. 15th St	San Pedro, CA 90731	School
67	San Pedro High School Olguin Campus	3210 S Alma St	San Pedro, CA 90731	School
68	San Pedro MST Center	2201 Barrywood Ave	San Pedro, CA 90731	School
69	Savannah Academy	2152 W Hill St	Long Beach, CA 90810	School
70	Select Community Day School	5869 Atlantic Ave.	Long Beach, CA 90802	School

<b>No. <sup>a</sup></b>	<b>Receptor Description</b>	<b>Street Address</b>	<b>City, State, Zip</b>	<b>Category</b>
71	St. Anthony High School/Constellation Community Charter Middle	620 Olive Ave.	Long Beach, CA 90802	School
72	St. Lucy School	2320 Cota Ave	Long Beach, CA 90810	School
73	Stevenson Elementary; Stevenson Child Development Centers/Preschool	515 Lime Ave.	Long Beach, CA 90802	School
74	Taper Avenue Elementary School	1824 N. Taper Ave	San Pedro, CA 90731	School
75	The New City School	1230 Pine Ave	Long Beach, CA 90813	School
76	Trinity Luthern School	1450 W. 7th St	San Pedro, CA 90731	School
77	True Social Justice Academy	630 Magnolia Ave	Long Beach, CA 90802	School
78	Vermont Christian School	931 Frigate Ave	Wilmington, CA 90744	School
79	White Point Elementary School	1410 Silvius Ave	San Pedro, CA 90731	School
80	Willenberg Special Education	308 S. Weymouth Ave.	San Pedro, CA 90731	School
81	William J. Johnston Community Day School	2210 N Taper Ave	San Pedro, CA 90731	School
82	William Logan Stephens Middle School	1830 W Columbia St	Long Beach, CA 90810	School
83	Wilmington Middle School	1700 Gulf Ave	Wilmington, CA 90744	School
84	Wilmington Park Elementary School/Mahar House	1140 Mahar Ave	Wilmington, CA 90744	School
85	8th Street Early Head Start	820 Long Beach Blvd	Long Beach, CA 90813	Child Care
86	12th Street Head Start	1212 Long Beach Blvd	Long Beach, CA 90806	Child Care
87	A Love 4 Learning Academy	306 Elm Ave	Long Beach, CA 90802	Child Care
88	ABC 123 Long Beach Learning Center	909 Pine Ave	Long Beach, CA 90813	Child Care
89	Agu Family Child Care	4400 Boyar Ave	Long Beach, CA 90807	Child Care
90	Armstrong Academy	1682 Anaheim St	Harbor City, CA 90710	Child Care
91	Aspiranet Foster Family Agency	1043 Pine Ave	Long Beach, CA 90813	Child Care
92	Atlantic Headstart	1862 Atlantic Ave	Long Beach, CA 90806	Child Care
93	Babineaux Family Child Care	2881 Delta Ave	Long Beach, CA 90810	Child Care
94	Bances and Luque Family child care	650 W Santa Cruz St	San Pedro, CA 90731	Child Care
95	Benford Family Child Care	530 E 8th St	Long Beach, CA 90813	Child Care
96	Bobo Family Daycare	3532 Delta Ave	Long Beach, CA 90810	Child Care
97	Briggs Family Child Care	Golden Ave	Long Beach, CA 90806	Child Care
98	Brighter Days Montessori	1903 W. Summerland St	San Pedro, CA 90732	Child Care
99	Brown Family Child Care	1831 W Jeanette Pl	Long Beach, CA 90810	Child Care
100	Cabrillo Child Development Center	2205 San Gabriel Ave	Long Beach, CA 90810	Child Care
101	Cabrillo Early Education Center	741 W. 8th St	San Pedro, CA 90731	Child Care
102	Carmen's Cry Baby Care	1509 S. Palos Verdes St	San Pedro, CA 90731	Child Care
103	Carol Daycare	2842 Easy Ave	Long Beach, CA 90810	Child Care
104	Casian Family Child Care	3256 Fashion Ave	Long Beach, CA 90810	Child Care
105	Ceja Family Child Care	2030 W Spring St	Long Beach, CA 90810	Child Care
106	Century Villages at Cabrillo Homeless Housing Community	2001 River Ave	Long Beach, CA 90810	Child Care
107	Child Care Center At St Mary Medical Center	930 Elm Ave	Long Beach, CA 90813	Child Care

<b>No. <sup>a</sup></b>	<b>Receptor Description</b>	<b>Street Address</b>	<b>City, State, Zip</b>	<b>Category</b>
108	Childtime Learning Center	1 World Trade Ctr # 199	Long Beach, CA 90813	Child Care
109	City of Long Beach Multi-Service Center; The Play House	1301 W 12th St	Long Beach, CA 90813	Child Care
110	Comprehensive Child Development	2565 Pacific Ave.	Long Beach, CA 90806	Child Care
111	Costa Family Child Care	2085 Easy Ave	Long Beach, CA 90810	Child Care
112	Dahlquist Preschool	1420 W. 7th St	San Pedro, CA 90731	Child Care
113	Davis Family Child Care	957 W 12th St	San Pedro, CA 90731	Child Care
114	Day Star Early Learning Center	631 W. 6th St	San Pedro, CA 90731	Child Care
115	Delgado Family Child Care	3383 Adriatic Ave	Long Beach, CA 90810	Child Care
116	Duran, Ramona Family Day Care	2935 Baltic Ave	Long Beach, CA 90810	Child Care
117	Edison Child Development Center	640 W 7th St	Long Beach, CA 90813	Child Care
118	Elm Street Head Start	1425 & 1429 Elm Ave	Long Beach, CA 90806	Child Care
119	Fords Family Day Care	2726 San Francisco Ave	Long Beach, CA 90806	Child Care
120	Franklin Day Care Center	2333 Fashion Ave	Carson, CA 90810	Child Care
121	Gallegos Family Child Care	2024 Adriatic Ave	Long Beach, CA 90810	Child Care
122	Garcia Family Child Care	2145 Wardlow Rd	Long Beach, CA 90810	Child Care
123	Garfield Head Start	2240 Baltic Ave	Long Beach, CA 90810	Child Care
124	Garibay Family Child Care	2172 Lime Ave	Long Beach, CA 90806	Child Care
125	Gomez Family Child Care	1156 Ronan Ave	Wilmington, CA 90744	Child Care
126	Good Shepherd Preschool and Infant Center	1350 W 25th St	San Pedro, CA 90732	Child Care
127	Grace Lutheran Preschool	245 W Wardlow Rd	Long Beach, CA 90807	Child Care
128	Happy Tots Montessori School & Infant Center	1518 Pacific Coast Hwy	Harbor City, CA 90710	Child Care
129	Harbor Area YWCA	437 W 9th St	San Pedro, CA 90731	Child Care
130	Harbor Day Preschool	580 W 6th St	San Pedro, CA 90731	Child Care
131	Harbor Hills Early Education Center	1874 Palos Verdes Dr N	Lomita, CA 90717	Child Care
132	Hawaiian Avenue Early Education Center	501 Hawaiian Ave	Wilmington, CA 90744	Child Care
133	Hernandez Family Child Care (1 of 2)	2200 Golden Ave	Long Beach, CA 90806	Child Care
134	Hernandez Family Child Care (2 of 2)	5322 Elm Ave	Long Beach, CA 90805	Child Care
135	Herrera Family Child Care	737 W Hill St	Long Beach, CA 90806	Child Care
136	Jardin De Ninos Home Child Care	1319 W Lowen St	Wilmington, CA 90744	Child Care
137	Job Corps Head Start - Daycare and Nursery	1903 Santa Fe Ave	Long Beach, CA 90810	Child Care
138	Jones Family Child Care	2275 Baltic Ave	Long Beach, CA 90810	Child Care
139	Just Like Home	1346 W 27th St	San Pedro, CA 90731	Child Care
140	Kelly's Care	943 N Washington Pl	Long Beach, CA 90813	Child Care
141	Kelly's Kids Daycare Center	855 W Willow St	Long Beach, CA 90806	Child Care
142	Kidazzle Preschool, Little Sprouts Preschool	1921 N Gaffey St	San Pedro, CA 90731	Child Care
143	Kim Family Child Care	2035 Linden Ave	Long Beach, CA 90806	Child Care

<b>No. <sup>a</sup></b>	<b>Receptor Description</b>	<b>Street Address</b>	<b>City, State, Zip</b>	<b>Category</b>
144	Lara Family Day Care	1303 W 253rd St	Harbor City, CA 90710	Child Care
145	Lil Cowpoke Preschool	445 N Avalon Blvd	Wilmington, CA 90744	Child Care
146	Long Beach Blvd Head Start	2236 Long Beach Blvd	Long Beach, CA 90806	Child Care
147	Long Beach Center for Child Development	622 E. Hill St	Long Beach, CA 90806	Child Care
148	Long Beach Child Development Center	2222 Olive Ave	Long Beach, CA 90806	Child Care
149	Long Beach Day Nursery - West Branch	1548 Chestnut Ave	Long Beach, CA 90813	Child Care
150	Look Who's Learning Pre-School	1491 W O'Farrell St	San Pedro, CA 90732	Child Care
151	Lopez Family Child Care	3500 Fashion Ave	Long Beach, CA 90810	Child Care
152	Loves Family Child Care	527 Daisy Ave	Long Beach, CA 90802	Child Care
153	Loving Day Care	1303 253rd St	Harbor City, CA 90710	Child Care
154	Lucy's Baby Care	940 Maine Ave	Long Beach, CA 90813	Child Care
155	Merry Go Round Nursery School	446 W 8th St	San Pedro, CA 90731	Child Care
156	Mills Family Daycare	1061 W 17th St	San Pedro, CA 90731	Child Care
157	Montessori On Elm Preschool + Kindergarten	930 Elm Ave	Long Beach, CA 90813	Child Care
158	Morales & Medina Family Childcare	526 W 2nd St	San Pedro, CA 90731	Child Care
159	Muir Child Development Center	3105 Easy Ave	Long Beach, CA 90810	Child Care
160	Munchkin Center	1348 N Marine Ave	Wilmington, CA 90744	Child Care
161	My First School	25405 Normandie Ave	Harbor City, CA 90710	Child Care
162	N 2 Lil Folkz	1624 Chestnut Ave	Long Beach, CA 90813	Child Care
163	Nero-Morrison Family Child Care	3500 Gale Ave	Long Beach, CA 90810	Child Care
164	New Harbor Vista Child Development Center	909 W D St	Wilmington, CA 90744	Child Care
165	Nursery Rhymes Day Care	1410 W. Ofarrell St	San Pedro, CA 90732	Child Care
166	Oakwood Children's Center	2650 Pacific Ave	Long Beach, CA 90806	Child Care
167	Old King Cole Day Care	3300 Oregon Ave	Long Beach, CA 90806	Child Care
168	P.A.L. Family Day Care	1980 Daisy Ave	Long Beach, CA 90806	Child Care
169	Pacific Head Start	2179 Pacific Ave	Long Beach, CA 90806	Child Care
170	Park Western Place Children's Center	1220 Park Western Pl	San Pedro, CA 90732	Child Care
171	Patterson Family Child Care	2133 Canal Ave	Long Beach, CA 90810	Child Care
172	Pine Head Start	927 Pine Ave	Long Beach, CA 90813	Child Care
173	Pines Christian Preschool	1516 W Anaheim St	Harbor City, CA 90710	Child Care
174	Poole Family Child Care	2002 Lime Ave	Long Beach, CA 90806	Child Care
175	Reece Family Day Care	911 King Ave	Wilmington, CA 90744	Child Care
176	Robin's Nest Day Care	645 W. 14th St	San Pedro, CA 90731	Child Care
177	Ruiz Family Daycare	2670 Daisy Ave	Long Beach, CA 90806	Child Care
178	San Pedro - Wilmington Early Education Center	920 W. 36th St	San Pedro, CA 90731	Child Care
179	San Pedro Area Child Care Services	787 W Elberon Ave	San Pedro, CA 90731	Child Care
180	San Pedro Child Care	926 W Elberon Ave	San Pedro, CA 90731	Child Care
181	Sanchez Family Child Care	1443 Deepwater Ave	Wilmington, CA 90744	Child Care

<b>No. <sup>a</sup></b>	<b>Receptor Description</b>	<b>Street Address</b>	<b>City, State, Zip</b>	<b>Category</b>
182	Sanders Teeny Tiny Preschool	3211 Santa Fe Ave	Long Beach, CA 90810	Child Care
183	Sandford Family Child Care	215 E Burnett St	Long Beach, CA 90806	Child Care
184	Sar Family Child Care	2171 Pasadena Ave	Long Beach, CA 90806	Child Care
185	Small World Learning Center	1749 N Avalon Blvd	Wilmington, CA 90744	Child Care
186	Smart & Manageable	2054 Myrtle Ave	Long Beach, CA 90806	Child Care
187	Tender Child Care	211 E 29th St	Long Beach, CA 90806	Child Care
188	The Mama's and Papa's Daycare	864 S Herbert Ave	San Pedro, CA 90731	Child Care
189	Third Street - CPDC Child Development Center	769 W 3rd St	San Pedro, CA 90731	Child Care
190	Toberman Child Care Center	131 N. Grand Ave	San Pedro, CA 90731	Child Care
191	Un Mundo De Amigos Preschool	1480 Long Beach Blvd	Long Beach, CA 90813	Child Care
192	VOA/Cesar Chavez Head Start	1269 N. Avalon St	Wilmington, CA 90744	Child Care
193	Volunteers of America-Parent Child Center	1135 257th St	Harbor City, CA 90710	Child Care
194	West Anaheim Child Care Center	440 W. Anaheim St	Long Beach, CA 90813	Child Care
195	Wilmington Park Children's Center	1419 E Young St	Wilmington, CA 90744	Child Care
196	World Tots LA Day Care Center	100 W. 5th St	San Pedro, CA 90731	Child Care
197	YMCA GLB Fairfield 3rd Street Preschool	607 E. 3rd St	Long Beach, CA 90802	Child Care
198	YMCA Play & Learn Preschool	2179 Pacific Ave	Long Beach, CA 90806	Child Care
199	Young Horizons Child Development Center (1 of 3)	501 Atlantic Ave	Long Beach, CA 90802	Child Care
200	Young Horizons Child Development Center (2 of 3)	2418 Pacific Ave	Long Beach, CA 90806	Child Care
201	Young Horizons Child Development Center (3 of 3)	1840 Pacific Ave	Long Beach, CA 90806	Child Care
202	Young Horizons/El Jardin de la Felicidad	507 Pacific Ave	Long Beach, CA 90813	Child Care
203	Yvette's Daycare	815 W. Opp St	Wilmington, CA 90744	Child Care
204	Zarate Family Child Care	2496 Oregon Ave	Long Beach, CA 90806	Child Care
205	Akin's Post Acute Rehab Hospital; Atlantic Memorial Healthcare Center	2750 Atlantic Ave	Long Beach, CA 90806	Elder Care
206	American AAA Health Care Center	629 N Avalon Blvd	Wilmington, CA 90744	Elder Care
207	American Gold Star Manor Healthcare	3021 Gold Star Dr	Long Beach, CA 90810	Elder Care
208	Am's Residential Facility-2	3627 Delta Ave	Long Beach, CA 90810	Elder Care
209	Aquarius Home	1765 Aquarius St	Long Beach, CA 90810	Elder Care
210	Bay Breeze Care	1653 Santa Fe Ave	Long Beach, CA 90813	Elder Care
210	The Breakers of Long Beach	210 E Ocean Blvd	Long Beach, CA 90802	Elder Care
211	Burnett Home Care	1740 W Burnett St	Long Beach, CA 90810	Elder Care
212	Cameron Home	W Cameron St	Long Beach, CA 90810	Elder Care
213	Caruthers Royale Care	2204 Lime Ave	Long Beach, CA 90806	Elder Care
214	Crow Flora Boarding & Care Homes	624 W. 9th St	San Pedro, CA 90731	Elder Care
215	Deluxe Guest Home	3260 Pine Ave	Long Beach, CA 90807	Elder Care
216	Deluxe Guest Home II	3266 Pine Ave	Long Beach, CA 90806	Elder Care
217	The Garden	2485 Cedar Ave	Long Beach, CA 90806	Elder Care

<b>No. <sup>a</sup></b>	<b>Receptor Description</b>	<b>Street Address</b>	<b>City, State, Zip</b>	<b>Category</b>
218	Grandma's House	1218 W D St	Wilmington, CA 90744	Elder Care
219	Harbor View Rehabilitation Center	490 W. 14th Street	Long Beach, CA 90813	Elder Care
220	Hayes Home	2470 Hayes Ave	Long Beach, CA 90810	Elder Care
221	Healthview - Pine Villa Assisted Living	117 E 8th St	Long Beach, CA 90813	Elder Care
222	Heritage Board & Care #2	1509 E 4th St	Long Beach, CA 90802	Elder Care
223	Hillcrest Care Center	3401 Cedar Ave	Long Beach, CA 90807	Elder Care
224	Little Sisters of the Poor	2100 S. Western Ave.	San Pedro, CA 90732	Elder Care
225	Loram Manor	1925 Gemini St	Long Beach, CA 90810	Elder Care
226	Los Palos Convalescent Hospital	1430 W 6th St	San Pedro, CA 90731	Elder Care
227	Olive Tree Home	1035 Olive St	Long Beach, CA 90813	Elder Care
228	Pacific Care Nursing Center	3355 Pacific Place	Long Beach, CA 90806	Elder Care
229	Padua House	940 Atlantic Ave	Long Beach, CA 90813	Elder Care
230	Pioneer Homes Of California	2041 W Carolyn Pl	Long Beach, CA 90810	Elder Care
231	Reliable Residential Care	1840 Aquarius St	Long Beach, CA 90810	Elder Care
232	Right At Home	2245 Elm Ave	Long Beach, CA 90806	Elder Care
233	RMR Residential Care Facility, LLC	2900 De Forest Ave	Long Beach, CA 90806	Elder Care
234	Royal Care Skilled Nursing Center	2725 Pacific Avenue	Long Beach, CA 90806	Elder Care
235	Santa Fe Convalescent Hospital	3294 Santa Fe Ave	Long Beach, CA 90810	Elder Care
236	Seacrest Convalescent Hospital	1416 W 6th St	San Pedro, CA 90731	Elder Care
237	Serra Project Long Beach	1043 Elm Ave	Long Beach, CA 90813	Elder Care
238	Villa Maria Care Center	723 E 9th St	Long Beach, CA 90813	Elder Care
239	Wilmington Gardens	1311 W Anaheim St	Wilmington, CA 90744	Elder Care
240	Earl & Lorraine Miller Children's Hospital; Long Beach Memorial Medical Center and Hospital	2801 Atlantic Ave	Long Beach, CA 90806	Hospital
241	Kaiser Permanente Foundation Hospital	25825 S. Vermont Ave	Harbor City, CA 90710	Hospital
242	Kaiser Permanente South Bay Medical Center	25825 S Vermont Ave	Harbor City, CA 90710	Hospital
243	Long Beach Doctors Hospital	1725 Pacific Ave	Long Beach, CA 90813	Hospital
244	Pacific Hospital of Long Beach (Hospital and Convalescent/Nursing Home)	2776 Pacific Ave	Long Beach, CA 90806	Hospital
245	Providence Little Company of Mary Medical Center	1300 W. 7th St	San Pedro, CA 90732	Hospital
246	San Pedro Medical Center	1360 W 6th St	San Pedro, CA 90732	Hospital
247	St Mary Medical Center (Hospital and Convalescent/Nursing Home)	1050 Linden Ave	Long Beach, CA 90813	Hospital
248	Tom Redgate Memorial Hospital	1775 Chestnut Ave	Long Beach, CA 90813	Hospital
249	22nd Street Park	140 W 22nd Street	San Pedro, CA 90731	Recreational
250	Admiral Kidd Park	2125 Santa Fe Ave	Long Beach, CA 90810	Recreational
251	Cabrillo Beach & Cabrillo Aquarium	3720 Stephen M. White Drive	San Pedro, CA 90731	Recreational
252	Cesar Chavez Park	401 Golden Ave	Long Beach, CA 90802	Recreational
253	Field of Dreams	501 Westmont Drive	San Pedro, CA 90731	Recreational

<b>No. <sup>a</sup></b>	<b>Receptor Description</b>	<b>Street Address</b>	<b>City, State, Zip</b>	<b>Category</b>
254	Harbor Japanese Community Cultural Center	1766 Seabright Ave	Long Beach, CA 90813	Recreational
255	Hudson Park	2335 Webster Ave	Long Beach, CA 90810	Recreational
256	Hudson Park Community Garden	2335 Webster Ave	Long Beach, CA 90810	Recreational
257	Joan Milke Flores Park	3601 S Gaffey St	San Pedro, CA 90731	Recreational
258	Khemara Buddhikaram Cambodian Buddhist Temple	2100 W Willow Street	Long Beach, CA 90810	Recreational
259	Knoll Hill Baseball Fields	766 Eastview Little League Drive	San Pedro, CA 90731	Recreational
260	Pramuan Simsriwatna Place of Worship	2015 W Hill Street	Long Beach, CA 90810	Recreational
261	San Pedro Community Gardens	1400 N Gaffey Street	San Pedro, CA 90731	Recreational
262	San Pedro Plaza Park (1 of 3)	7000 S Beacon Street	San Pedro, CA 90731	Recreational
263	San Pedro Plaza Park (2 of 3)	7000 S Beacon Street	San Pedro, CA 90731	Recreational
264	San Pedro Plaza Park (3 of 3)	7000 S Beacon Street	San Pedro, CA 90731	Recreational
265	Silverado Park Community Center	1545 W 31st Street	Long Beach, CA 90810	Recreational
266	Wilmington Waterfront Park (1 of 3)	S. C Street	Wilmington, CA 90744	Recreational
267	Wilmington Waterfront Park (2 of 3)	S. C Street	Wilmington, CA 90744	Recreational
268	Wilmington Waterfront Park (3 of 3)	S. C Street	Wilmington, CA 90744	Recreational
269	Wilmington Waterfront Promenade	Water Street	Wilmington, CA 90744	Recreational

Note:

<sup>a</sup> The receptor numbers correspond to receptor labels in Figure B3-3.

## 4.0 Health Risk Calculation Approach

### 4.1 Model Selection

The air dispersion modeling was performed using the USEPA AERMOD dispersion model, version 24142 (USEPA, 2024), based on the *Guideline on Air Quality Models* (USEPA, 2024b). The emission source parameters, meteorological data, model options, and temporal distribution assumptions used in the HRA are the same as described in Sections 3.1.1 through 3.1.4 of Appendix B2. For compatibility with HARP, each source group in AERMOD was modeled with a 1 gram per second “unit” emission rate. The actual TAC emission rates for each source group were modeled in HARP.

The health risk calculations were performed using the HARP Air Dispersion Modeling and Risk Tool, version 22118 (CARB, 2022), based on the TAC unit concentrations predicted by AERMOD. HARP calculated values for individual cancer risk, chronic hazard index, and acute hazard index at each modeled receptor for the Project and Baseline scenarios. For each health value calculated by HARP, the HRA determined a Project increment by subtracting the Baseline health value from the Project health value at each modeled receptor. For each receptor type (residential, occupational, and sensitive), the modeled receptor with the highest increment was selected for reporting and comparison to the appropriate significance threshold.

### 4.2 Toxicity Factors

An inhalation cancer potency factor represents the probability that a person will contract cancer from the continuous inhalation of one milligram (mg) of a chemical per kilogram (kg) of body weight per day over a period of 70 years. Inhalation potency factors were used by HARP to calculate individual cancer risk using the risk assessment algorithms defined in OEHHA (2015).

To assess the potential for non-cancer health effects resulting from chronic and acute inhalation exposure, OEHHA established inhalation Reference Exposure Levels (RELs) (CARB, 2025). An inhalation REL is an estimate of the long-term (chronic) or short-term (acute) concentration in air to which the human population (including sensitive subgroups) may be exposed without appreciable risk of experiencing adverse non-cancer effects. A hazard quotient is a chemical’s predicted concentration divided by its REL. A hazard index is the sum of the chemical-specific hazard quotients affecting a particular human organ or system (“target organ”). A separate hazard index is calculated for each target organ affected by the TACs because not all TACs affect the same target organ. A hazard index below 1.0 for all affected target organs indicates that adverse non-cancer health effects are not expected.

In addition to the inhalation exposure pathway, several noninhalation exposure pathways were also evaluated in the HRA, including dermal adsorption, soil ingestion, home-grown produce ingestion, and mother’s milk ingestion (the latter two pathways were evaluated only for residential and the following sensitive receptors: schools, hospitals, child care, and elder care). The TACs evaluated for noninhalation pathways include arsenic, cadmium, chromium VI, lead, mercury, nickel, and selenium. For diesel IC engines, the inhalation toxicity factors for DPM already include the effects from exposure to whole diesel exhaust, so a separate evaluation of noninhalation pathways was not necessary.

The various exposure parameters and settings used in HARP for the noninhalation exposure pathways are consistent with OEHHA default recommendations (OEHHA, 2015). The results of this analysis show that the contributions of the noninhalation exposure pathways to the HRA results are small compared to the inhalation pathway.

Table B3-5 presents the toxicity factors and target organs used to assess health risks in this study.

**Table B3-5. Toxicity Factors Used In the HRA**

Toxic Air Contaminant <sup>a</sup>	HARP TAC ID	Inhalation Cancer Potency Factor (mg/kg-d) <sup>-1</sup>	Chronic Inhalation REL (µg/m <sup>3</sup> )	Target Organ for Chronic Exposure <sup>b</sup>	Acute Inhalation REL (µg/m <sup>3</sup> )	Target Organ for Acute Exposure <sup>b</sup>
Acetaldehyde	75070	0.01	140	H	470	D,H
Acrolein	107028	--	0.35	H	2.5	D,H
Arsenic	7440382	12	0.015	B,C,G,H,I	0.2	B,C,G
Benzene	71432	0.1	3	E	27	C,E,F
1,3-Butadiene	106990	0.6	2	C	660	C
Cadmium	7440439	15	0.02	H,L	--	--
Chlorine	7782505	--	0.2	H	210	D,H
Chlorobenzene	108907	--	1,000	A,C,L	--	--
Chromium III	16065831	--	0.06	H	0.48	H
Chromium VI	18540299	510	0.2	E,H	--	--
Cobalt	7440484	27	--	--	--	--
Copper	7440508	--	--	--	100	H
Diesel Particulate Matter (DPM)	9901	1.1	5	H	--	--
Ethyl benzene	100414	0.0087	2,000	A,C,K,L	--	--
Formaldehyde	50000	0.021	9	H	55	D
Hexane	110543	--	7,000	G	--	--
Isoprene	78795	0.019	--	--	--	--
Lead	7439921	0.042	--	--	--	--
Manganese	7439965	--	0.09	G	--	--
Mercury	7439976	--	0.03	C,G,L	0.6	C,G
Methanol	67561	--	4,000	C	28,000	G
Methyl ethyl ketone	78933	--	--	--	13,000	D,H
Methyl tert-butyl ether	1634044	0.0018	8,000	A,D,L	--	--
Naphthalene	91203	0.12	9	H	--	--
Nickel	7440020	0.91	0.014	C,E,H	0.2	F
Propylene	115071	--	3,000	H	--	--
Selenium	7782492	--	20	A,B,G	--	--
Styrene	100425	--	900	G	21,000	C,D,H
Sulfates	9960	--	--	--	120	H
Toluene	108883	--	420	D	5,000	D,G,H
Trimethylbenzenes	25551137	--	4	G	2,400	G
Vanadium	7440622	--	--	--	30	D,H
Xylenes	1330207	--	700	D,G,H	22,000	D,G,H

Notes:

<sup>a</sup> Arsenic, cadmium, chromium VI, lead, mercury, nickel, and selenium were also evaluated for noninhalation exposure pathways. For arsenic, the cancer risk oral slope factor is 1.5 (mg/kg/day)<sup>-1</sup>, and the noncancer chronic oral REL is 0.0000035 mg/kg/day. For cadmium, the noncancer chronic oral REL is 0.0005 mg/kg/day. For chromium VI, the cancer risk oral slope factor is 0.5 (mg/kg/day)<sup>-1</sup>, and the noncancer chronic oral REL is 0.02 mg/kg/day. For lead, the cancer risk oral slope factor is 0.0085 (mg/kg/day)<sup>-1</sup>. For mercury, the noncancer chronic oral REL is 0.00016 mg/kg/day. For nickel, the noncancer chronic oral REL is 0.011 mg/kg/day. For selenium, the noncancer chronic oral REL is 0.005 mg/kg/day. The deposition rate was assumed to be the HARP default of 0.02 meters per second (controlled sources).

<sup>b</sup> Key to non-cancer acute and chronic exposure target organs:

- |                                      |                       |
|--------------------------------------|-----------------------|
| A. Gastrointestinal System/Liver     | H. Respiratory System |
| B. Cardiovascular System             | I. Skin               |
| C. Reproductive/Developmental System | J. Bone/Teeth         |
| D. Eye                               | K. Endocrine System   |
| E. Hematologic System                | L. Kidney             |
| F. Immune System                     |                       |
| G. Nervous System                    |                       |

Source: CARB, 2025b.

## 4.3 Exposure Scenarios for Individual Cancer Risk

According to OEHHA (2015), individual cancer risk is directly proportional to the frequency and duration of exposure to TACs, modified by age sensitivity factors. The age sensitivity factors multiply the risk by 10 for 3<sup>rd</sup>-trimester fetuses to age 2 (labeled by OEHHA as “3TM < 2”); by 3 for children from age 2 to 16 (“2 < 16”), and by 1 for persons age 16 and older (“≥ 16”).

Table B3-6 summarizes the primary exposure assumptions used in this HRA to calculate individual cancer risks by receptor type. The exposure assumptions for residential and occupational receptors were obtained from OEHHA (2015) and SCAQMD (2020). The exposure assumptions for sensitive receptors are not explicitly provided by OEHHA (2015) and SCAQMD (2020). Therefore, LAHD conservatively evaluated schools, hospitals, elder care facilities, and child care centers with 30-year residential exposure assumptions, and recreational receptors with reasonable worst case exposure assumptions of 250 days/year, 2 hr/day, for 30 years.

Because the Revised Project, FEIR Mitigated Scenario, and Floating Future Baseline would have emissions that change over time in the HRA, it was necessary to subdivide the exposure durations listed in Table B3-6 into smaller time periods (sub-periods) and run HARP separately for each sub-period. These sub-periods correspond to the years when the modeled receptor’s age falls within the ranges defined by the age sensitivity factors (3TM < 2, 2 < 16, and ≥ 16).

For each receptor type, the youngest expected age range was modeled in the HRA to produce the most conservative (highest) risk result. For example, the calculation of 30-year residential cancer risk assumed that the exposed person would be in the 3<sup>rd</sup> trimester before birth at the beginning of the 30-year exposure period. This assumption maximizes the use of the childhood age sensitivity factors in the cancer risk calculation. Moreover, the calculated cancer risk is increased even further by HARP during childhood years by using higher breathing rates per body weight than adults.

For each sub-period modeled in HARP, the average annual Project or Baseline emissions that would occur during that sub-period were used by HARP. The HARP cancer risk results for each sub-period were then summed to obtain the cancer risk for the entire exposure duration. For example, the 30-year residential cancer risk for the Revised Project was determined by running HARP once for each of three sub-periods. The first sub-period represents a receptor age of 3TM < 2, assumes an exposure duration of 2.25 years, and uses Revised Project emissions averaged over the time period 2019-2020. The second sub-period represents a receptor age of 2 < 16, assumes an exposure duration of 14 years, and uses Revised Project emissions averaged over the time period 2021-2034. The third sub-period represents a receptor age of 16 < 30, assumes an exposure duration of 14 years, and uses Revised Project emissions averaged over the time period 2035-2048. The cancer risks calculated by HARP for these three sub-periods were then summed to obtain the total cancer risks for the entire 30-year exposure duration.

Other HARP assumptions for the calculation of cancer risk include: residential and sensitive receptors except recreational were evaluated with inhalation, soil ingestion, dermal contact, mother’s milk ingestion, and homegrown garden ingestion pathways. Occupational and recreational receptors were evaluated with inhalation, soil ingestion,

and dermal contact pathways. A deposition settling velocity of 0.02 meters per second was assumed in HARP for all noninhalation exposure pathways (SCAQMD, 2020).

**Table B3-6. Cancer Risk Exposure Assumptions by Receptor Type**

Receptor Type <sup>1</sup>	Exposure Duration			Cancer Risk Calculation Approach	Exposed Person's Age Range <sup>6</sup>
	Days per Year	Hours per Day	Years		
<b>Residential</b>					
Individual Cancer Risk	350	24	30	RMP Using the Derived Method <sup>2</sup>	3TM <sup>5</sup> < 30
Population Cancer Burden	350	24	70	RMP Using the Derived Method	3TM < 70
Occupational	250	8	25	OEHHA Derived Method <sup>3</sup>	≥ 16
<b>Sensitive</b>					
Schools, Hospitals, Elder Care, Child Care	350	24	30	RMP Using the Derived Method	3TM < 30
Recreational <sup>4</sup>	250	2	30	OEHHA Derived Method	0 < 30

Notes:

1. The exposure assumptions for residential and occupational receptors were obtained from OEHHA (2015) and SCAQMD (2020). The exposure assumptions for sensitive receptors are not explicitly provided by OEHHA (2015) and SCAQMD (2020). Therefore, LAHD conservatively evaluated schools, hospitals, elder care, and child care with 30-year residential exposure assumptions, and recreational receptors with reasonable worst case exposure assumptions.
2. The "RMP Using the Derived Method" uses CARB's Risk Management Policy (RMP) and is recommended by the SCAQMD (2020) for residential receptors. It uses high end breathing rates (95<sup>th</sup> percentile) for children from the 3<sup>rd</sup> trimester through age 2, and 80<sup>th</sup> percentile breathing rates for all other ages.
3. The "OEHHA Derived Method" is recommended by the SCAQMD (2020) for occupational receptors. For cancer risk, it uses high end (95<sup>th</sup> percentile) exposure parameters for the top two exposure pathways (one of which is nearly always inhalation) and mean (65<sup>th</sup> percentile) exposure parameters for the remaining pathways.
4. Recreational receptors were modeled in HARP with occupational exposure assumptions, which reflect 8 hours per day of pollutant exposure. Therefore, the HARP-calculated risk values for recreational receptors were scaled by 2 hr/8 hr to reflect 2 hours per day of pollutant exposure.
5. 3TM = third trimester (prior to birth).
6. The exposed person's age ranges were conservatively selected to maximize the cancer risk (i.e., the youngest expected age range).

### 4.3.1 Population Cancer Burden Methodology

Population cancer burden is defined by OEHHA as an estimate of the number of cancer cases expected in an exposed population from a 70-year exposure to emissions (OEHHA, 2015). Whereas individual cancer risk represents the probability of a single exposed person to develop cancer, population cancer burden estimates the number of individuals that would be expected to contract cancer by multiplying the cancer risk by the exposed population. The exposed population is defined as the number of persons living within a facility's zone of impact, which is defined by the LAHD and SCAQMD as the area within the Project's one in a million cancer risk isopleth based on 70-year lifetime residential exposure. Population cancer burden was calculated using census block population data contained in HARP, which are based on the 2020 U.S. Census.

## 4.4 Exposure Scenarios for Non-Cancer Hazard Indices

Chronic hazard indices were calculated in HARP using the “OEHHA Derived” method, which evaluates inhalation exposure, the two most dominant noninhalation exposure pathways using high-end (95<sup>th</sup> percentile) intake rates, and the remaining noninhalation exposure pathways using mean (65<sup>th</sup> percentile) intake rates (SCAQMD, 2020). All receptors were conservatively evaluated with inhalation, soil ingestion, dermal contact, mother’s milk ingestion, and homegrown garden ingestion pathways. A deposition settling velocity of 0.02 meters per second was assumed in HARP for all noninhalation exposure pathways (SCAQMD, 2020).

Acute hazard indices were calculated in HARP using the conservative “simple” approach, whereby the highest pollutant concentrations generated by each modeled source group in AERMOD are summed, even if they would not occur at the same time. Although this approach can produce a substantial overstatement of the acute hazard index, it is sufficient to use as a screening approach to demonstrate that the significance threshold would not be exceeded. In accordance with OEHHA guidance (OEHHA, 2015), HARP evaluates only the inhalation exposure pathway for the acute hazard index.

## 5.0 Significance Criteria

The LAHD has adopted a significance threshold of 10 in a million for individual cancer risk (project increment). Based on this threshold, the Revised Project or FEIR Mitigated Scenario would produce less than significant cancer risk impacts if the maximum cancer risk due to the Project is less than 10 in a million ( $10 \times 10^{-6}$ ) relative to the Static Baseline and the Floating Future Baseline. The LAHD has also adopted the air quality significance threshold for cancer burden of 0.5 excess cancer cases in areas with Project-attributable individual lifetime cancer risk above one in a million ( $1 \times 10^{-6}$ ) (SCAQMD, 2023). In addition, the LAHD has adopted the significance threshold of 1.0 for chronic and acute non-cancer hazard indices; the Revised Project or FEIR Mitigated Scenario would produce less than significant non-cancer impacts if the chronic and acute hazard indices would be less than 1.0 (SCAQMD, 2023).

## 6.0 Predicted Incremental Health Impacts

### 6.1 Revised Project

Table B3-7 presents the maximum predicted health impacts of the Revised Project relative to the Baseline. The table includes estimates of individual cancer risk, chronic noncancer hazard index, and acute noncancer hazard index at the maximally exposed residential, occupational, and sensitive receptors. Results are presented for the Revised Project (before subtracting baseline), Static Baseline, Revised Project Minus Static Baseline increment, Floating Future Baseline, and the Revised Project Minus Floating Future Baseline increment (the latter two categories are applicable only to cancer risk). The table also presents the population cancer burden for the Revised Project relative to the Static Baseline and Floating Future Baseline.

Figure B3-4 shows the locations of the maximum predicted individual cancer risk, chronic hazard index, and acute hazard index increments for the Revised Project relative to the Static Baseline and Floating Future Baseline. Figure B3-5 shows a close-up of the maximum receptors nearest to the China Shipping Terminal.

**Table B3-7. Maximum Health Impacts Estimated for the Revised Project**

Health Impact	Receptor Type	Revised Project <sup>b</sup>	Static Baseline	Revised Project Minus Static Baseline <sup>c,d</sup>	Floating Future Baseline <sup>e</sup>	Revised Project Minus Floating Future Baseline <sup>c</sup>	Significance Threshold	Threshold Exceeded? <sup>a</sup>
Individual Cancer Risk	Residential	46.9 × 10 <sup>-6</sup> 46.9 in a million	240.6 × 10 <sup>-6</sup> 240.6 in a million	< 0	115.8 × 10 <sup>-6</sup> 115.8 in a million	0.2 × 10 <sup>-6</sup> 0.2 in a million	10 × 10 <sup>-6</sup> 10 in a million	No
	Occupational	24.1 × 10 <sup>-6</sup> 24.1 in a million	33.3 × 10 <sup>-6</sup> 33.3 in a million	< 0	11.7 × 10 <sup>-6</sup> 11.7 in a million	<b>12.5 × 10<sup>-6</sup></b> <b>12.5 in a million</b>		Yes
	Sensitive	34.4 × 10 <sup>-6</sup> 34.4 in a million	78.6 × 10 <sup>-6</sup> 78.6 in a million	< 0	41.8 × 10 <sup>-6</sup> 41.8 in a million	4.3 × 10 <sup>-6</sup> 4.3 in a million		No
Chronic Hazard Index	Residential	0.30	0.17	0.16	n/a	n/a	1.0	No
	Occupational	1.04	0.54	0.70	n/a	n/a		No
	Sensitive	0.83	0.39	0.44	n/a	n/a		No
Acute Hazard Index	Residential	0.41	0.07	0.35	n/a	n/a	1.0	No
	Occupational	0.86	0.10	0.78	n/a	n/a		No
	Sensitive	0.67	0.07	0.61	n/a	n/a		No
Population Cancer Burden			<b>Revised Project Minus Static Baseline</b>		<b>Revised Project Minus Floating Future Baseline</b>		0.5	No
			0 <sup>f</sup>		0.00005			

Notes:

<sup>a</sup> The significance thresholds apply only to the two Project increments: “Revised Project Minus Static Baseline” and, for cancer risk and cancer burden, “Revised Project Minus Floating Future Baseline”. Exceedances of the thresholds are indicated in **bold**.

<sup>b</sup> The “Revised Project” column represents the maximum Revised Project health values prior to subtracting baseline.

<sup>c</sup> The displayed maximum health values for the “Revised Project” and “Static Baseline” may not necessarily subtract to equal the displayed maximum health value for the “Revised Project Minus Static Baseline” because the three values may not correspond to the same receptor. The same is true for the “Revised Project”, “Floating Future Baseline”, and “Revised Project Minus Floating Future Baseline” values. The example given in the text provides more explanation on the determination of maximum health values.

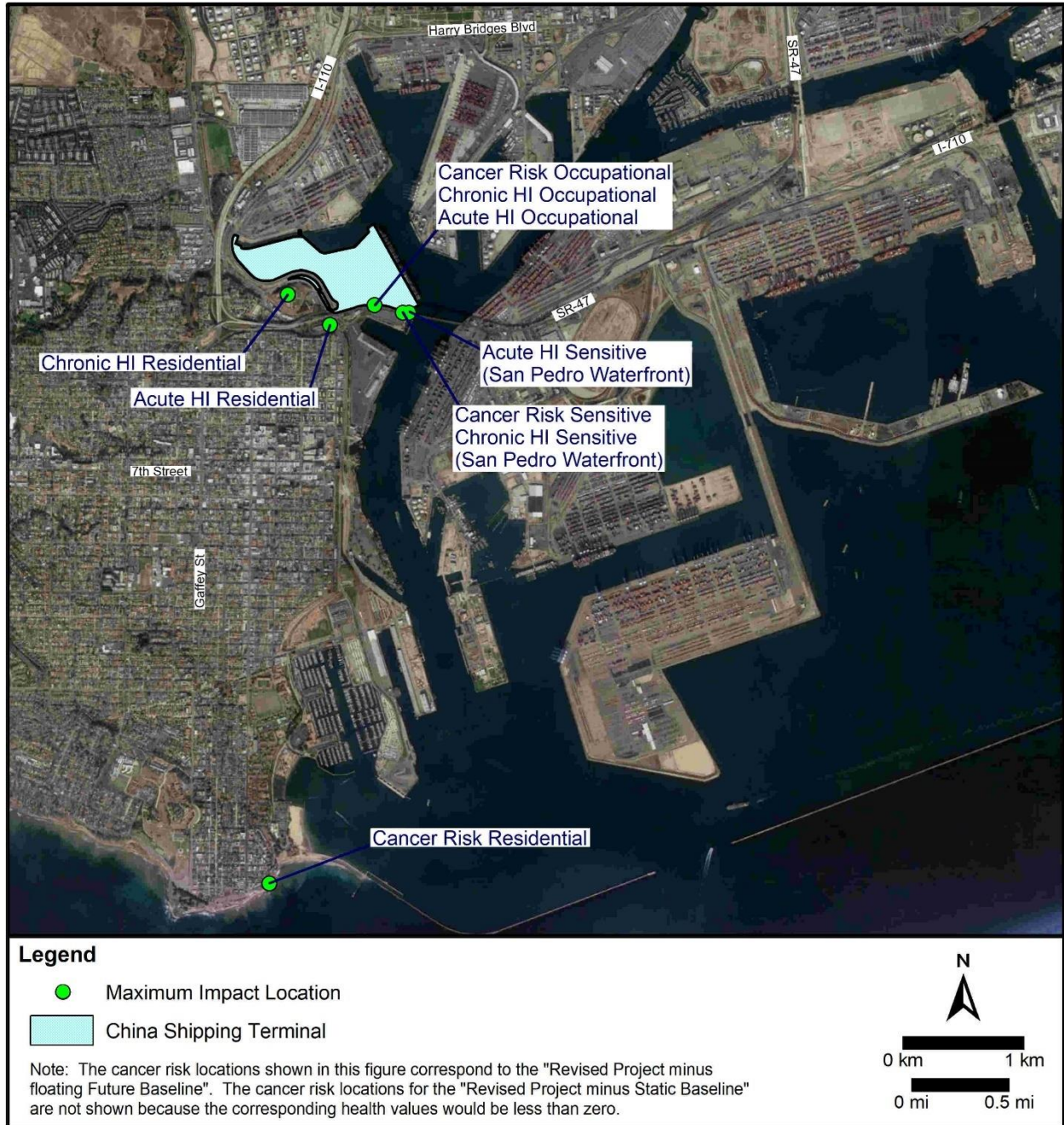
<sup>d</sup> A maximum health value increment less than zero means that the Project health value would be less than the Baseline health value at every modeled receptor.

<sup>e</sup> Floating Future Baseline health values are not applicable to chronic and acute hazard indices, as explained in Section 2.1.

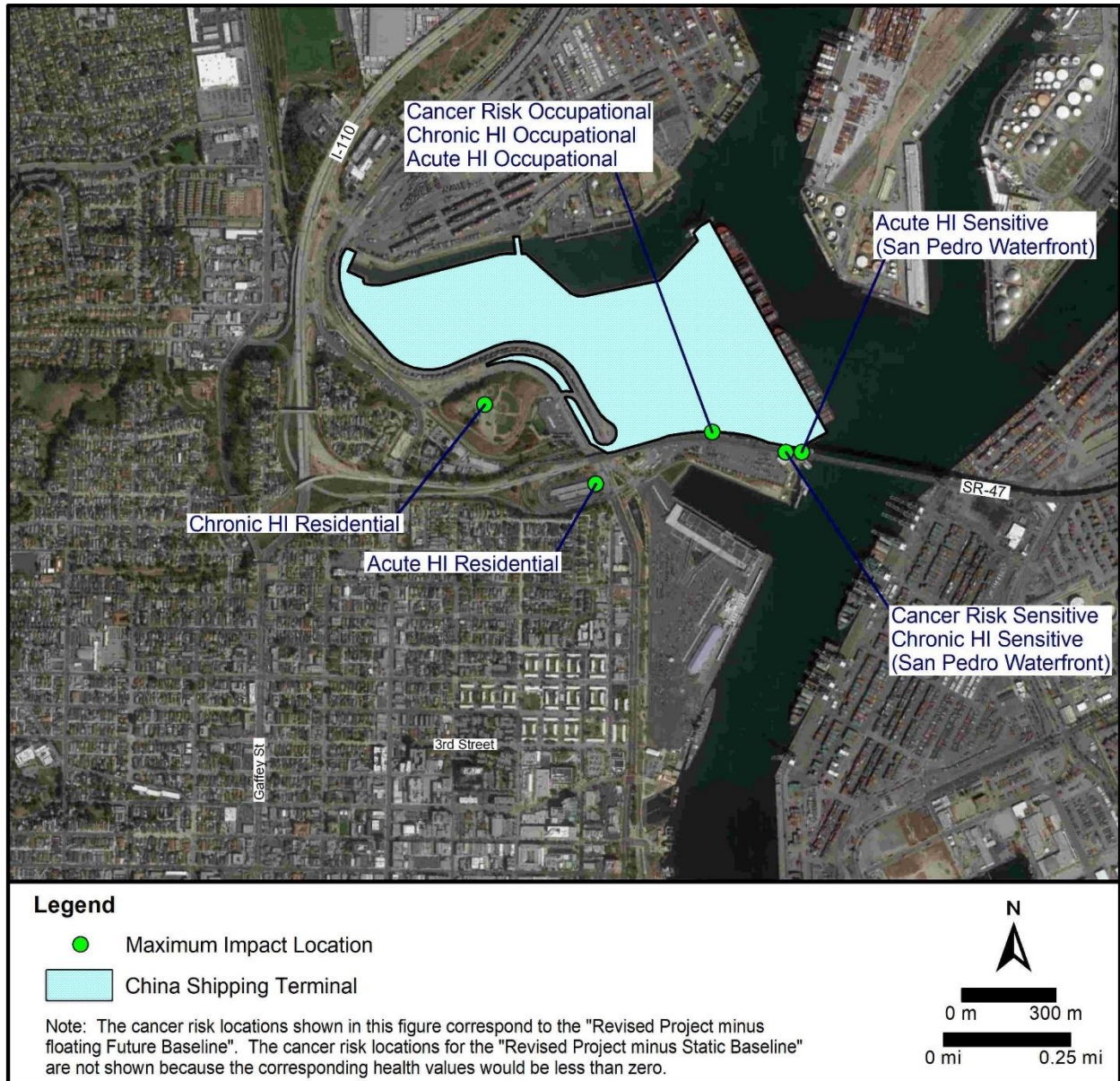
<sup>f</sup> No census block population would have a 70-year cancer risk increment greater than 1 in a million, so the cancer burden would be zero by definition.

<sup>g</sup> Each positive result shown in the table for cancer risk, chronic hazard index, and acute hazard index represents the receptor location with the maximum modeled health value. The health values at all other modeled receptors would be less than the values shown in the table.

**Figure B3-4. Locations of Maximum Health Impacts Estimated for the Revised Project (far field)**



**Figure B3-5. Locations of Maximum Health Impacts Estimated for the Revised Project (near field)**



The maximum health values for the absolute Revised Project (before subtracting baseline), Baselines, and Revised Project increments (Revised Project Minus Static Baseline and Revised Project Minus Floating Future Baseline) in Table B3-7 do not always occur at the same receptor location. This means that the displayed Revised Project increments are not necessarily equal to the displayed absolute Revised Project results minus the displayed Baseline results, although all displayed values are correct. Instead, an increment must be calculated at each of the hundreds of modeled receptors, and the receptor with the highest increment is presented in the table. The following example shows how the maximum “Revised Project Minus Floating Future Baseline” increment for cancer risk at a residential receptor, shown in the first row of results in Table B3-7, was determined. The value of 0.2 in a million is predicted to occur at modeled Receptor No. 1556, in San Pedro, in a residential area between Point Fermin Park and Cabrillo Beach.

- Example—Determine “Revised Project Minus Floating Future Baseline” cancer risk increment at Receptor No. 1556:
  - The “Revised Project” cancer risk at Receptor No. 1556 would be 1.8 in a million. This value is not shown in Table B3-7 because Receptor No. 1556 is not the location of the maximum Revised Project cancer risk (before subtracting baseline).
  - The “Floating Future Baseline” cancer risk at Receptor No. 1556 is 1.6 in a million. This value is not shown in Table B3-7 because Receptor No. 1556 is not the location of the maximum Floating Future Baseline cancer risk.
  - The “Revised Project Minus Floating Future Baseline” increment at Receptor No. 1556 would be  $1.8 - 1.6 = 0.2$  in a million. This value is shown in Table B3-7 because it would be the maximum cancer risk increment.

After performing an increment calculation similar to the above example at every modeled receptor, it was determined that Receptor No. 1556 would have the highest Revised Project minus Floating Future Baseline increment of any residential receptor. Therefore, its value of 0.2 in a million is presented in Table B3-7.

In the above example, Receptor No. 1556 is *not* the maximum residential receptor for the absolute “Revised Project” (before subtracting baseline); its maximum of 46.9 in a million (shown in the table) would occur at Receptor No. 1132, in San Pedro, on Knoll Hill, west of Front Street, southwest of the China Shipping Terminal boundary. However, the Revised Project minus Floating Future Baseline increment at Receptor No. 1132 would be  $46.9 - 52.2 = -5.3$  in a million, a net reduction in cancer risk and less than the overall maximum risk of 0.2 in a million.

Similarly, Receptor No. 1556 is *not* the maximum residential receptor for the “Floating Future Baseline”; its maximum of 115.8 in a million (shown in the table) occurs at Receptor No. 1196, in San Pedro, west of Harbor Blvd., near the Samoan Sea Apartments. However, the Revised Project minus Floating Future Baseline increment at Receptor No. 1196 would be  $35.5 - 115.8 = -80.4$  in a million (rounded), a net reduction in cancer risk and less than the overall maximum risk of 0.2 in a million.

Although the above example shows the cancer risk increment calculation at just one modeled receptor, the complete determination of the maximum increment involved this same type of calculation at 2,149 modeled receptors prior to selection of the maximum receptor. All increments for individual cancer risk, chronic hazard index, and acute hazard index for the Revised Project and FEIR Mitigated Scenario were determined similarly.

Table B3-7 shows that the Revised Project would produce the following health risk impacts relative to the Static Baseline and Floating Future Baseline:

## 6.1.1 Individual Cancer Risk

In relation to the Static Baseline, the individual cancer risk increment associated with the Revised Project is predicted to be less than zero at all residential, occupational, and sensitive receptors. This means that the risk associated with the Revised Project (before subtracting baseline) would be less than the risk associated with the Static Baseline at all modeled receptors.

In relation to the Floating Future Baseline, the individual cancer risk increment associated with the Revised Project is predicted to be 12.5 in a million at the maximally exposed occupational receptor. This occupational risk increment would be greater than the significance threshold of 10 in a million. Figure B3-5 shows that the maximum occupational receptor is located along the southern China Shipping Terminal boundary. As discussed in the above example, the maximum cancer risk increment of 0.2 in a million at a residential receptor is predicted to occur in San Pedro, in a residential area between Point Fermin Park and Cabrillo Beach. The maximum cancer risk increment of 4.3 in a million at a sensitive receptor is predicted to occur in a recreational area, on the San Pedro waterfront, just south of the Terminal boundary. The residential and sensitive cancer risk increments would be less than the significance threshold.

Table B3-8 shows the emission source contributions to cancer risk from the Revised Project at the residential, occupational, and sensitive receptor locations with the highest predicted cancer risk increments relative to the Floating Future Baseline. The highest source contributor at the maximum residential receptor would be ocean-going vessels, which would contribute approximately 63 percent of the risk (from transit, berth, and anchorage combined). CHE would contribute approximately 26 percent of the risk at the maximum residential receptor. The highest source contributor at the maximum occupational and sensitive receptors would be CHE, which would contribute more than 90 percent of the cancer risk at both locations.

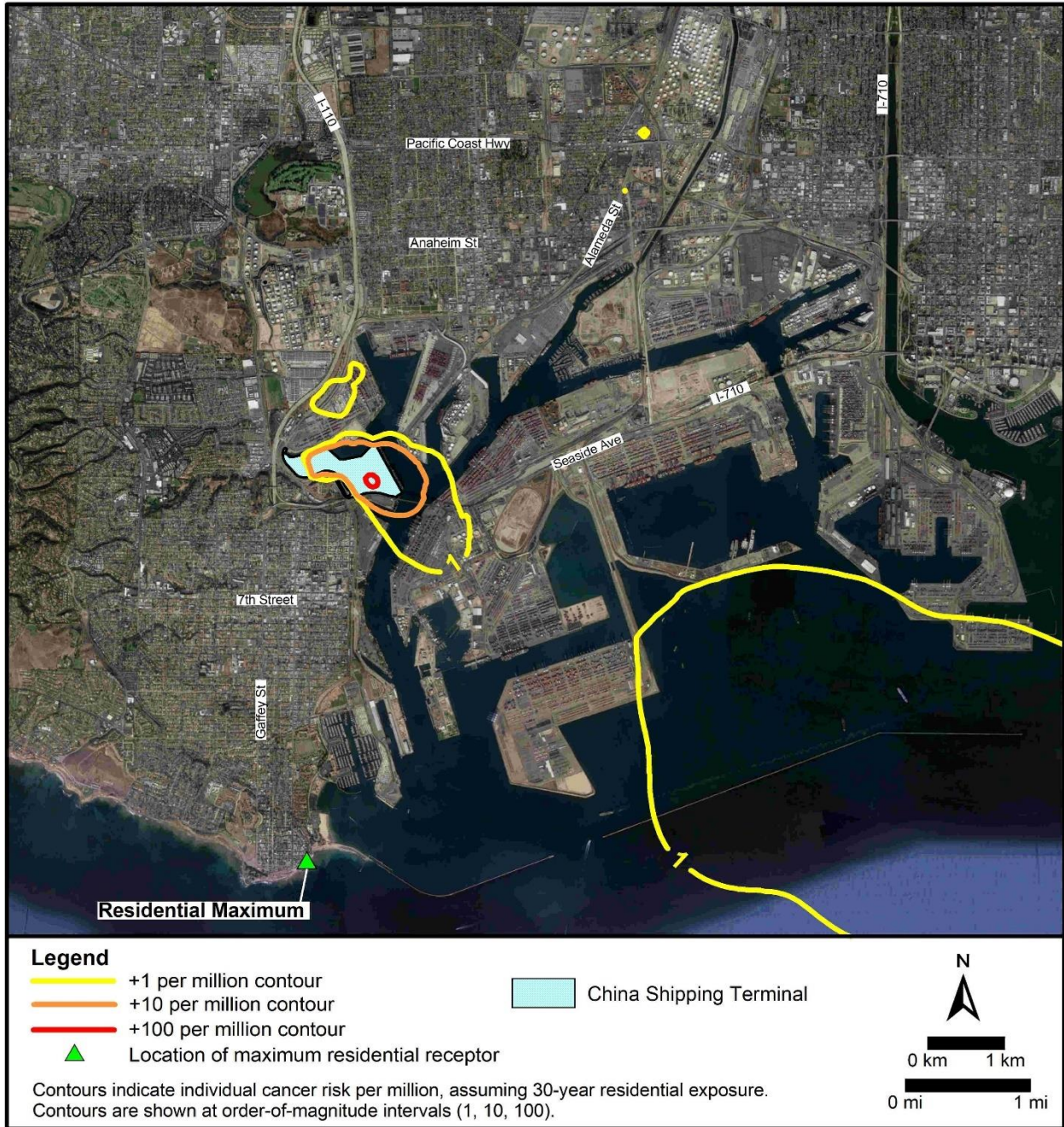
**Table B3-8. Source Contributions to Cancer Risk at the Maximum Increment Receptors for the Revised Project**

Source Category	Contribution at Receptor Location <sup>a</sup>		
	Maximum Residential Receptor	Maximum Occupational Receptor	Maximum Sensitive Receptor
Ships in Transit	39.67%	0.43%	0.66%
Ships at Berth	13.38%	0.55%	1.77%
Ships at Anchorage	9.59%	0.09%	0.22%
Tugboats	2.84%	0.17%	0.60%
Trucks at Gates and On-Terminal	0.69%	1.97%	2.20%
Trucks Driving Off-Terminal	4.55%	0.73%	1.15%
Switch Locomotives	0.24%	0.18%	0.13%
Line Haul Locomotives	3.02%	0.25%	0.42%
Cargo Handling Equipment	25.95%	95.57%	92.81%
Worker Vehicles	0.06%	0.05%	0.03%

<sup>a</sup> Contributions are from the Revised Project sources prior to subtracting baseline.

Figure B3-6 shows individual cancer risk contours of the Revised Project Minus Floating Future Baseline, assuming 30-year residential exposure assumptions. The risk contours are shown at order-of-magnitude intervals of 1 in a million, 10 in a million (which is the significance threshold), and 100 in a million risk. The figure shows that the 10 in a million risk contour does not extend over any residences. The location of the residential receptor with the highest individual cancer risk increment of 0.2 in a million is also shown in the figure.

**Figure B3-6. Isopleths of 30-Year Residential Cancer Risk for the Revised Project Minus Floating Future Baseline**



## 6.1.2 Population Cancer Burden

The population cancer burden for the Revised Project was predicted to be zero additional cancer cases relative to the Static Baseline and 0.00005 additional cancer cases relative to the Floating Future Baseline. Both results would be less than the significance threshold of 0.5.

## 6.1.3 Chronic and Acute Hazard Indices

The maximum chronic and acute hazard index increments associated with the Revised Project relative to the Static Baseline are predicted to be less than the significance threshold of 1.0 for all receptor types.

## 6.2 FEIR Mitigated Scenario

Table B3-9 presents the maximum predicted health impacts of the FEIR Mitigated Scenario relative to the Baseline. The table includes estimates of individual cancer risk, chronic noncancer hazard index, and acute noncancer hazard index at the maximally exposed residential, occupational, and sensitive receptors. Results are presented for the FEIR Mitigated Scenario (before subtracting baseline), Static Baseline, FEIR Mitigated Scenario Minus Static Baseline increment, Floating Future Baseline, and the FEIR Mitigated Scenario Minus Floating Future Baseline increment (the latter two categories are applicable only to cancer risk). The table also presents the population cancer burden for the FEIR Mitigated Scenario relative to the Static Baseline and Floating Future Baseline.

Figure B3-7 shows the locations of the maximum predicted individual cancer risk, chronic hazard index, and acute hazard index increments for the FEIR Mitigated Scenario relative to the Static Baseline and Floating Future Baseline. Figure B3-8 shows a close-up of the maximum receptors nearest to the China Shipping Terminal.

**Table B3-9. Maximum Health Impacts Estimated for the FEIR Mitigated Scenario**

Health Impact	Receptor Type	FEIR Mitigated Scenario <sup>b</sup>	Static Baseline	FEIR Mitigated Scenario Minus Static Baseline <sup>c,d</sup>	Floating Future Baseline <sup>e</sup>	FEIR Mitigated Scenario Minus Floating Future Baseline <sup>c,d</sup>	Significance Threshold	Threshold Exceeded? <sup>a</sup>
Individual Cancer Risk	Residential	34.0 × 10 <sup>-6</sup> 34.0 in a million	240.6 × 10 <sup>-6</sup> 240.6 in a million	< 0	115.8 × 10 <sup>-6</sup> 115.8 in a million	< 0	10 × 10 <sup>-6</sup> 10 in a million	No
	Occupational	15.0 × 10 <sup>-6</sup> 15.0 in a million	33.3 × 10 <sup>-6</sup> 33.3 in a million	< 0	11.7 × 10 <sup>-6</sup> 11.7 in a million	4.5 × 10 <sup>-6</sup> 4.5 in a million		No
	Sensitive	23.7 × 10 <sup>-6</sup> 23.7 in a million	78.6 × 10 <sup>-6</sup> 78.6 in a million	< 0	41.8 × 10 <sup>-6</sup> 41.8 in a million	< 0		No
Chronic Hazard Index	Residential	0.28	0.17	0.15	n/a	n/a	1.0	No
	Occupational	0.80	0.54	0.62	n/a	n/a		No
	Sensitive	0.69	0.39	0.30	n/a	n/a		No
Acute Hazard Index	Residential	0.24	0.07	0.17	n/a	n/a	1.0	No
	Occupational	0.45	0.10	0.37	n/a	n/a		No
	Sensitive	0.41	0.07	0.34	n/a	n/a		No
Population Cancer Burden			<b>FEIR Mitigated Scenario Minus Static Baseline</b>		<b>FEIR Mitigated Scenario Minus Floating Future Baseline</b>		0.5	No
			0 <sup>f</sup>		0 <sup>f</sup>			

Notes:

<sup>a</sup> The significance thresholds apply only to the two Project increments: “FEIR Mitigated Scenario Minus Static Baseline” and, for cancer risk and cancer burden, “FEIR Mitigated Scenario Minus Floating Future Baseline”.

<sup>b</sup> The “FEIR Mitigated Scenario” column represents the maximum FEIR Mitigated Scenario health values prior to subtracting baseline.

<sup>c</sup> The displayed maximum health values for the “FEIR Mitigated Scenario” and “Static Baseline” may not necessarily subtract to equal the displayed maximum health value for the “FEIR Mitigated Scenario Minus Static Baseline” because the three values may not correspond to the same receptor. The same is true for the “FEIR Mitigated Scenario”, “Floating Future Baseline”, and “FEIR Mitigated Scenario Minus Floating Future Baseline” values. The example given in the text provides more explanation on the determination of maximum health values.

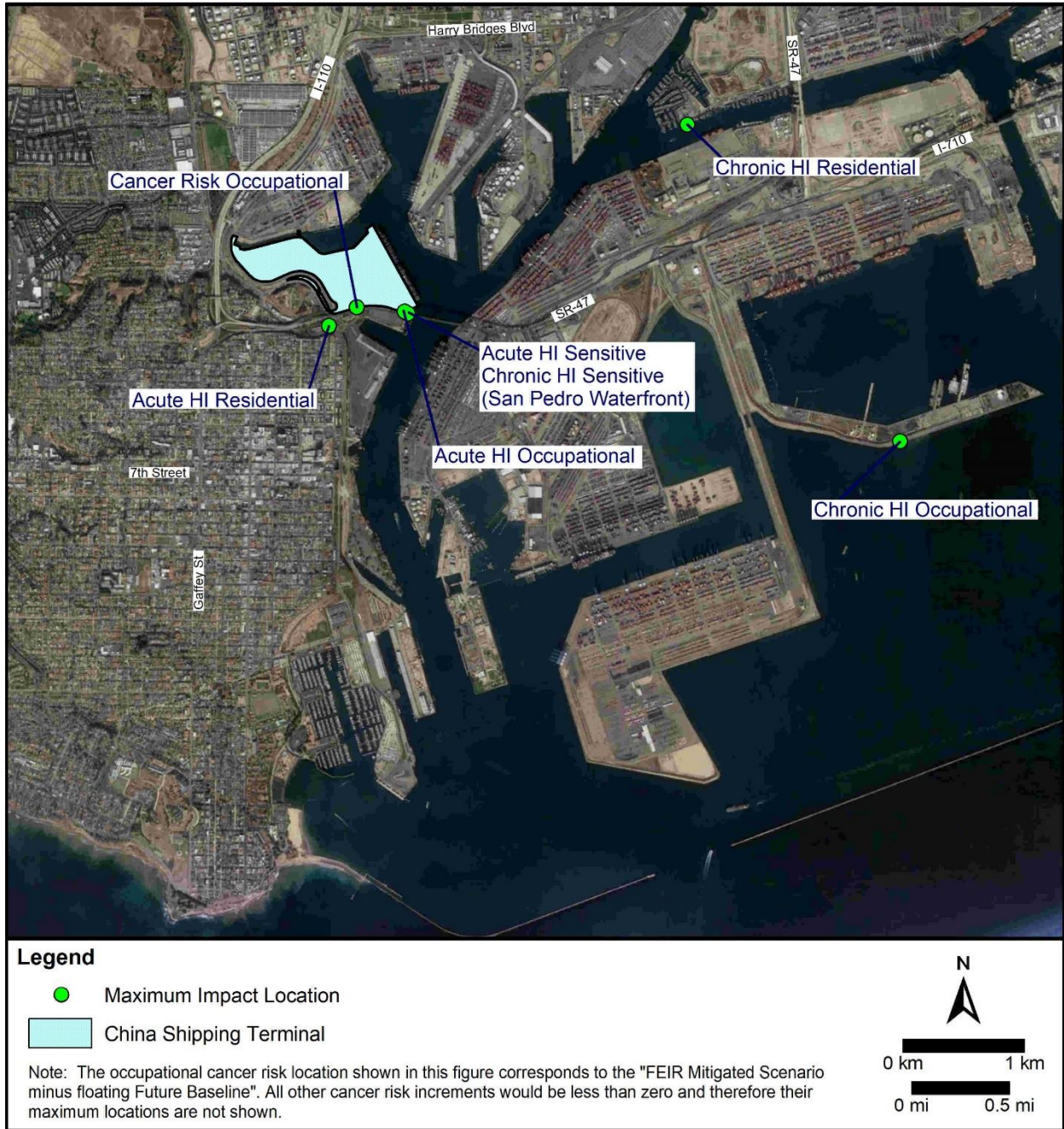
<sup>d</sup> A maximum health value increment less than zero means that the Project health value would be less than the Baseline health value at every modeled receptor.

<sup>e</sup> Floating Future Baseline health values are not applicable to chronic and acute hazard indices, as explained in Section 2.1.

<sup>f</sup> No census block population would have a 70-year cancer risk increment greater than 1 in a million, so the cancer burden would be zero by definition.

<sup>g</sup> Each positive result shown in the table for cancer risk, chronic hazard index, and acute hazard index represents the receptor location with the maximum modeled health value. The health values at all other modeled receptors would be less than the values shown in the table.

**Figure B3-7. Locations of Maximum Health Impacts Estimated for the FEIR Mitigated Scenario (far field)**



**Figure B3-8. Locations of Maximum Health Impacts Estimated for the FEIR Mitigated Scenario (near field)**

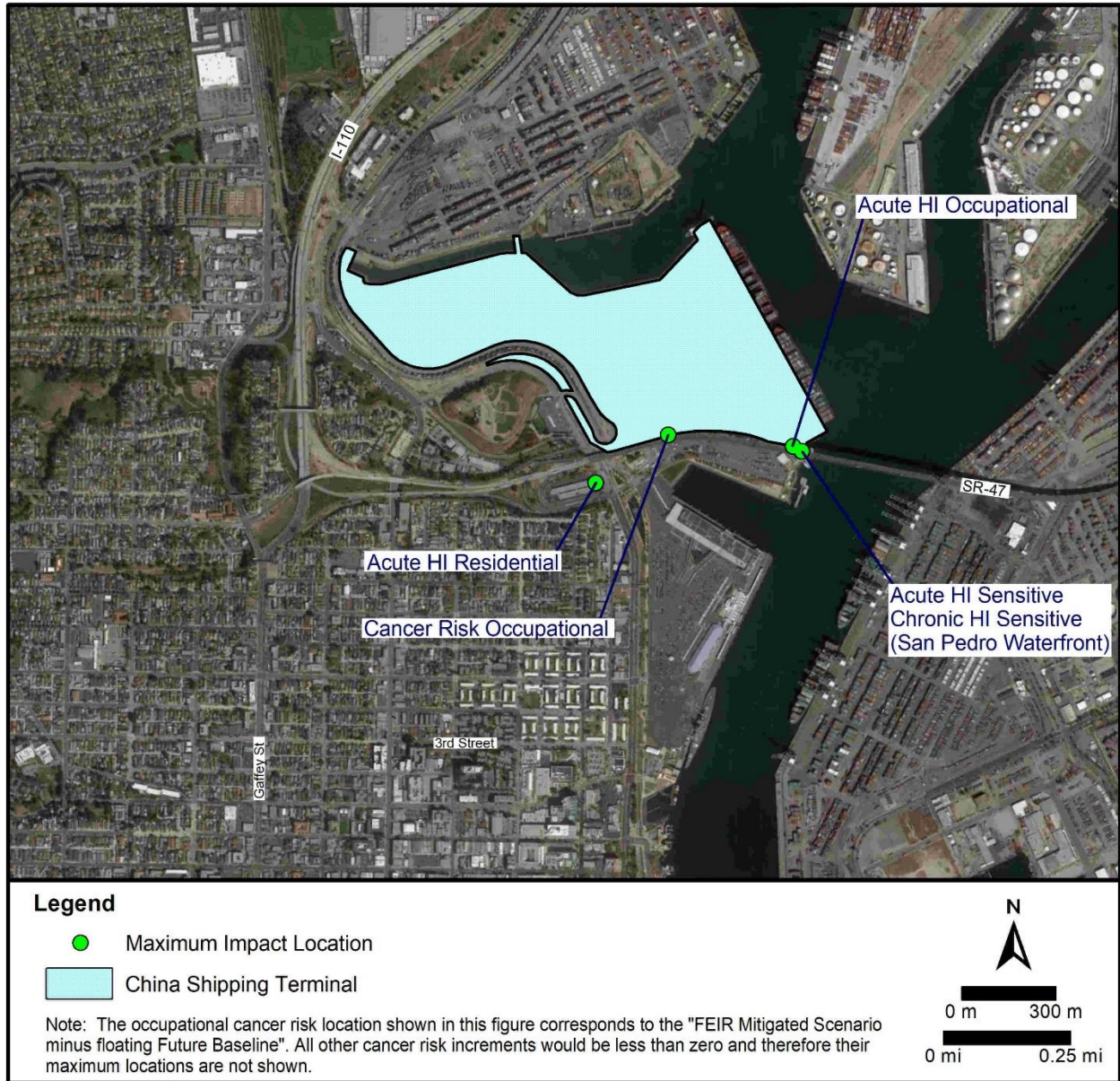


Table B3-9 shows that the FEIR Mitigated Scenario would produce the following health risk impacts relative to the Static Baseline and Floating Future Baseline:

## **6.2.1 Individual Cancer Risk**

The maximum individual cancer risk increments for the FEIR Mitigated Scenario are predicted to be less than the significance threshold for all receptor types, relative to both the Static Baseline and Floating Future Baseline.

Figure B3-9 shows the 1 in a million individual cancer risk contour of the FEIR Mitigated Scenario Minus Floating Future Baseline, assuming 30-year residential exposure assumptions. There would be no receptors with residential cancer risk increments of 10 in a million or greater; hence, the 10 in a million and 100 in a million risk contours are not shown.

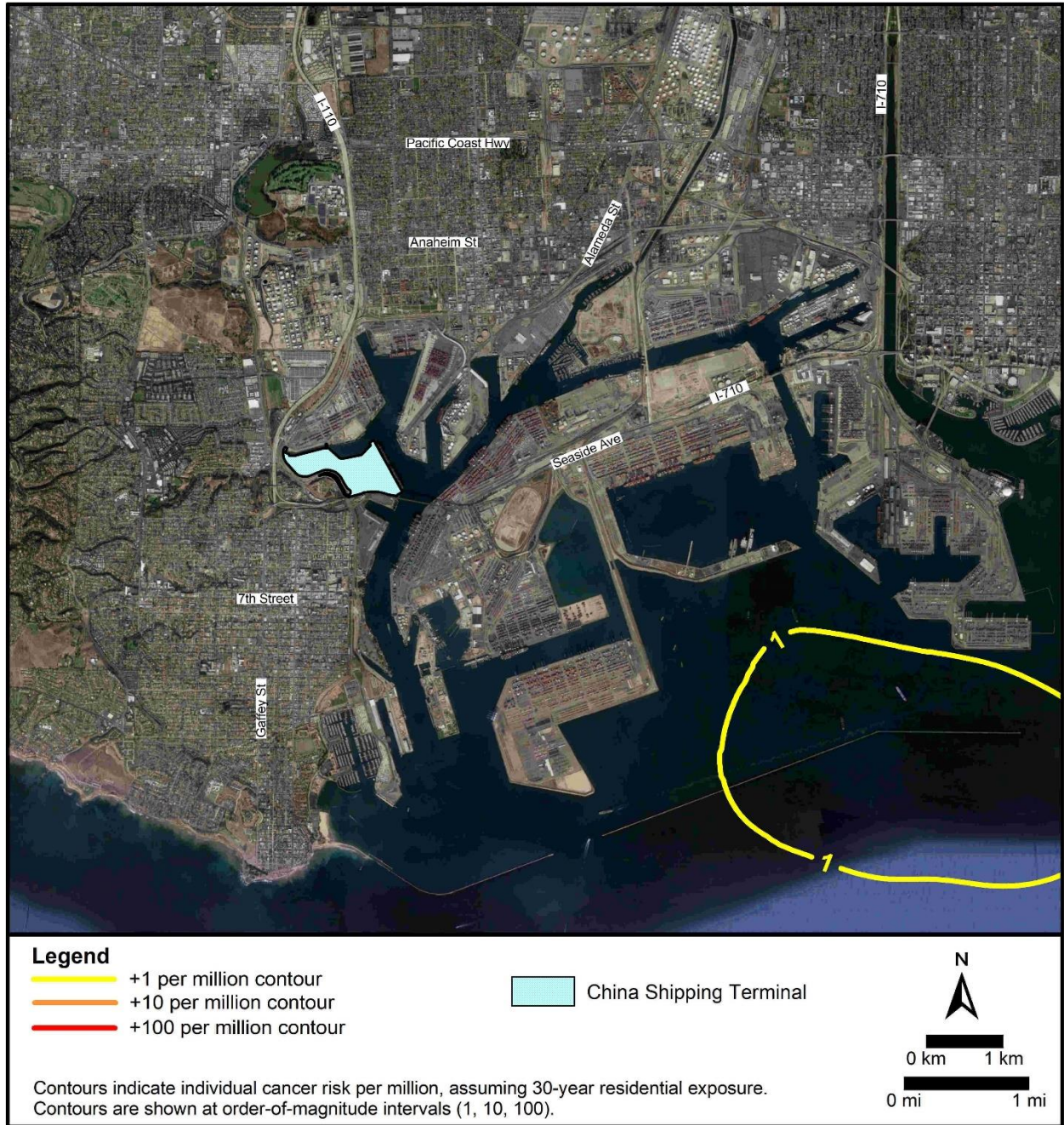
## **6.2.2 Population Cancer Burden**

The population cancer burden for the FEIR Mitigated Scenario was predicted to be zero additional cancer cases relative to both the Static Baseline and Floating Future Baseline.

## **6.2.3 Chronic and Acute Hazard Indices**

The maximum chronic and acute hazard index increments associated with the FEIR Mitigated Scenario are predicted to be less than the significance threshold for all receptor types.

**Figure B3-9. Isopleths of 30-Year Residential Cancer Risk for the FEIR Mitigated Scenario Minus Floating Future Baseline**



## 7.0 Risk Uncertainty

Health risk assessments such as the one presented in this appendix are not intended to provide estimates of the absolute health risk or expected incidence of disease in a population, but instead are conducted to allow comparisons of the potential health impacts of different alternatives to each other and to significance criteria. Consistent with agency guidelines and standard approaches to regulatory risk assessment, this risk assessment used health-protective (conservative) assumptions to provide a margin of safety with respect to human health. OEHHA has provided a discussion of risk uncertainty, which is reiterated here (OEHHA 2015):

*OEHHA has striven to use the best science available in developing these risk assessment guidelines. However, there is a great deal of uncertainty associated with the process of risk assessment. The uncertainty arises from lack of data in many areas necessitating the use of assumptions. The assumptions used in these guidelines are designed to err on the side of health protection in order to avoid underestimation of risk to the public. Sources of uncertainty, which may overestimate or underestimate risk, include: 1) extrapolation of toxicity data in animals to humans, 2) uncertainty in the estimation of emissions, 3) uncertainty in the air dispersion models, and 4) uncertainty in the exposure estimates. In addition to uncertainty, there is a natural range or variability in measured parameters defining the exposure scenario. Scientific studies with representative sampling and large enough sample sizes can characterize this variability. In the specific context of a Hot Spots risk assessment, the source of variability with the greatest quantitative impact is variation among the human population in such properties as height, weight, food consumption, breathing rates, and susceptibility to chemical toxicants. OEHHA captures at least some of the variability in exposure by developing data driven distributions of intake rates, where feasible, in the [Technical Support Document (TSD)] for Exposure Assessment (OEHHA, 2012).*

*Interactive effects of exposure to more than one carcinogen or toxicant are addressed in the risk assessment with default assumptions of additivity. Cancer risks from all carcinogens addressed in the HRA are added. Similarly, non-cancer hazard quotients for substances impacting the same target organ/system are added to determine the hazard index (HI). Although such effects of multiple chemicals are assumed to be additive by default, several examples of synergism (interactive effects greater than additive) are known. For substances that act synergistically, the HRA could underestimate the risks. Some substances may have antagonistic effects (lessen the toxic effects produced by another substance). For substances that act antagonistically, the HRA could overestimate the risks.*

*Other sources of uncertainty, which may underestimate or overestimate risk, can be found in exposure estimates where little or no data are available (e.g., soil half-life and dermal penetration of some substances from a soil matrix).*

*The differences among species and within human populations usually cannot be easily quantified and incorporated into risk assessments. Factors including metabolism, target site sensitivity, diet, immunological responses, and genetics may influence the response to toxicants. The human population is much more diverse both genetically and culturally (e.g., lifestyle, diet) than inbred experimental animals. The intraspecies variability among humans is expected to be much greater than in laboratory animals. In most cases, cancer*

*potency values have been estimated only for the single most affected tumor site. This represents a source of uncertainty in the cancer risk assessment. Adjustment for tumors at multiple sites induced by some carcinogens may result in a higher potency. Some recent assessments of carcinogens include such adjustments. Other uncertainties arise 1) in the assumptions underlying the dose-response model used, and 2) in extrapolating from large experimental doses, where other toxic effects may compromise the assessment of carcinogenic potential, to usually much smaller environmental doses.*

*When occupational epidemiological data are used to generate a carcinogenic potency or a health protective level for a non-carcinogen, less uncertainty is involved in the extrapolation from workplace exposures to environmental exposures. When using human data, no interspecies extrapolation is necessary, eliminating a significant source of uncertainty. However, children are a subpopulation whose hematological, nervous, endocrine, and immune systems, for example, are still developing and who may be more sensitive to the effects of toxicants on their developing systems. The worker population and risk estimates based on occupational epidemiological data are more uncertain for children than adults. Current risk assessment guidelines include procedures designed to address the possibly greater sensitivity of infants and children, but there are only a few compounds for which these effects have actually been measured experimentally. In most cases, the adjustment relies on default assumptions which may either underestimate or overestimate the true risks faced by infants and children exposed to toxic substances or carcinogens.*

*Risk estimates generated by an HRA should not be interpreted as the expected rates of disease in the exposed population but rather as estimates of potential for disease, based on current knowledge and a number of assumptions.*

*In the Hot Spots program, cancer risk is often expressed as the maximum number of new cases of cancer projected to occur in a population of one million people due to exposure to the cancer-causing substance over a 30-year residential period. However, there is uncertainty associated with the cancer risk estimate. An individual's risk of contracting cancer from exposure to facility emissions may be less or more than the risk calculated in the risk assessment. An individual's risk not only depends on the individual's exposure to a specific chemical but also on his or her genetic background, health, diet, lifestyle choices and other environmental and workplace exposures. OEHHA uses health-protective exposure assumptions to avoid underestimating risk. For example, the risk estimate for airborne exposure to chemical emissions uses the health protective assumption that the individual has a high breathing rate and exposure began early in life when cancer risk is highest.*

*A Reference Exposure Level (REL) is the concentration level at or below which no adverse non-cancer health effects are anticipated for the specified exposure duration. RELs are based on the most sensitive, relevant, adverse health effect reported in the medical and toxicological literature. RELs are designed to protect the most sensitive individuals in the population by the inclusion of factors that account for uncertainties as well as individual differences in human susceptibility to chemical exposures. The factors used in the calculation of RELs are meant to err on the side of public health protection in order to avoid underestimation of non-cancer hazards. Exceeding the REL does not automatically indicate an adverse health impact. However, increasing concentrations above the REL value increases the likelihood that the health effect will occur.*

*Risk assessments under the Hot Spots program are often used to compare one source with another and to prioritize concerns. Consistent approaches to risk assessment are necessary to fulfill this function.*

## 8.0 References

- CARB 1989. *Technical Guidance Document for the Emission Inventory Criteria and Guidelines Regulation for AB 2588*. Technical Support Division. August.
- CARB, 2022. HARP Air Dispersion Modeling and Risk Tool. Version 22118. April 28. Available: <https://ww2.arb.ca.gov/resources/documents/harp-air-dispersion-modeling-and-risk-tool>. Accessed April 2025.
- CARB, 2024. Speciation Profiles Used in CARB Modeling. September. Available: <https://ww2.arb.ca.gov/speciation-profiles-used-carb-modeling>. Accessed February 2025.
- CARB, 2025. Consolidated Table of OEHHA/ARB Approved Risk Assessment Health Values. January 7. Available: <https://ww2.arb.ca.gov/sites/default/files/classic/toxics/healthval/contable01072025v2.pdf>. Accessed February 2025.
- CARB, 2025b. HARP Air Dispersion Modeling and Risk Tool. Health Database. Version 25003. January 3. Available: <https://ww2.arb.ca.gov/resources/documents/harp-air-dispersion-modeling-and-risk-tool>. Accessed April 2025.
- OEHHA, 2012. *Air Toxics Hot Spots Program Risk Assessment Guidelines. Technical Support Document for Exposure Assessment and Stochastic Analysis*. August. Available: <https://oehha.ca.gov/media/downloads/crn/exposureassessment2012sd.pdf>. Accessed May 2025.
- OEHHA, 2015. *Air Toxics Hot Spots Program Risk Assessment Guidelines. Guidance Manual for Preparation of Health Risk Assessments*. February. Available: <https://oehha.ca.gov/sites/default/files/media/downloads/crn/2015guidancemanual.pdf>. Accessed April 2025.
- SCAQMD, 2020. *AB 2588 and Rule 1402 Supplemental Guidelines (Supplemental Guidelines for Preparing Risk Assessments for the Air Toxics “Hot Spots” Information and Assessment Act)*. October. Available: <https://www.aqmd.gov/docs/default-source/planning/risk-assessment/forms-and-guidelines/ab-2588-supplemental-guidelines.pdf?sfvrsn=19>. Accessed August 2024.
- SCAQMD, 2023. South Coast AQMD Air Quality Significance Thresholds. March. Available: <https://www.aqmd.gov/docs/default-source/ceqa/handbook/south-coast-aqmd-air-quality-significance-thresholds.pdf?sfvrsn=25>. Accessed April 2025.
- USEPA, 2024. AERMOD Modeling System. Version 24142. November 20. Support Center for Regulatory Atmospheric Modeling (SCRAM). Air Quality Dispersion Modeling - Preferred and Recommended Models. Available: <https://www.epa.gov/scram/air-quality-dispersion-modeling-preferred-and-recommended-models#aermod>. Accessed April 2025.
- USEPA, 2024b. *Guideline on Air Quality Models*. November 29. 40 CFR Part 51, Appendix W. Available: [https://www.epa.gov/system/files/documents/2024-11/appendix\\_w-2024.pdf](https://www.epa.gov/system/files/documents/2024-11/appendix_w-2024.pdf). Accessed April 2025.