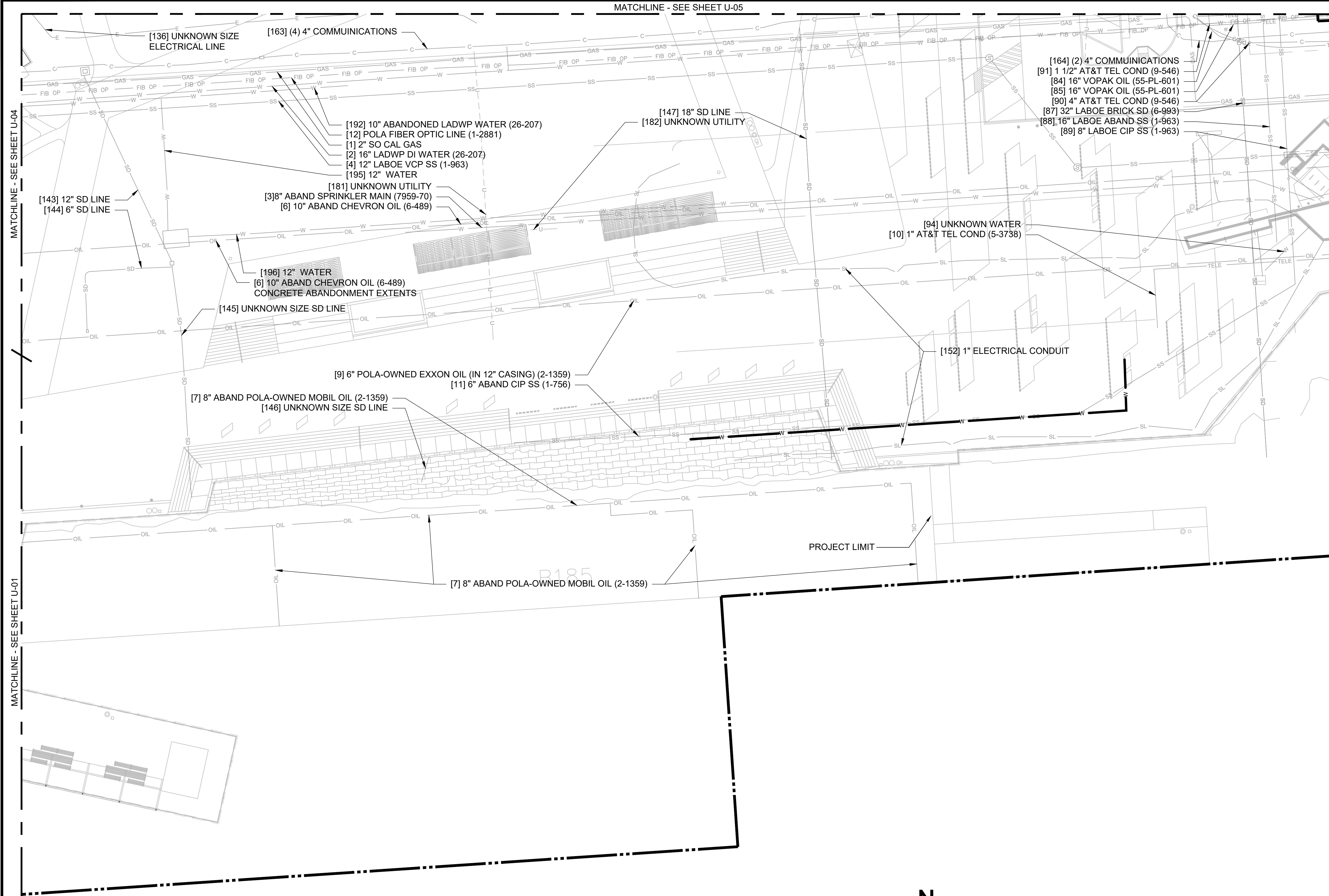


MATCHLINE - SEE SHEET U-05



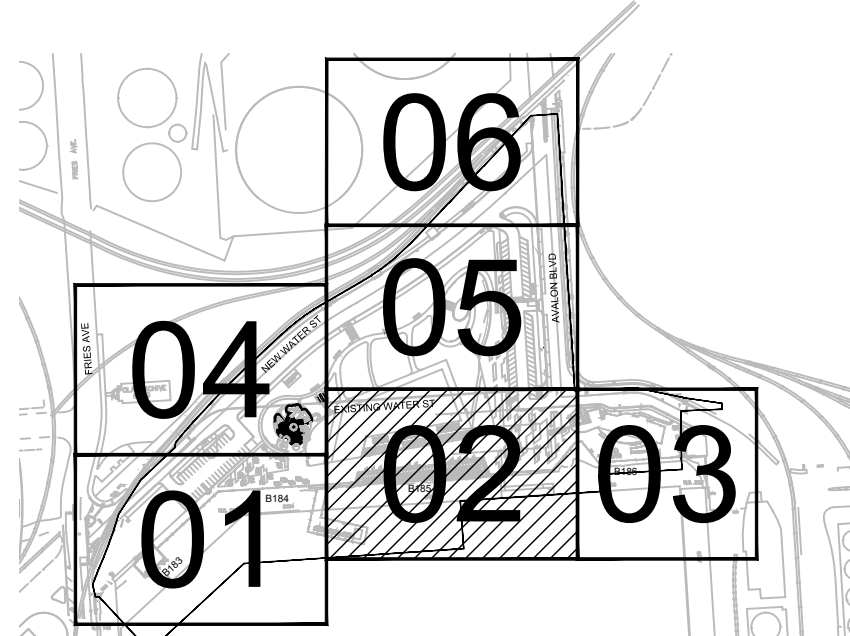
MATCHLINE - SEE SHEET U-04

MATCHLINE - SEE SHEET U-01

MATCHLINE - SEE SHEET U-03

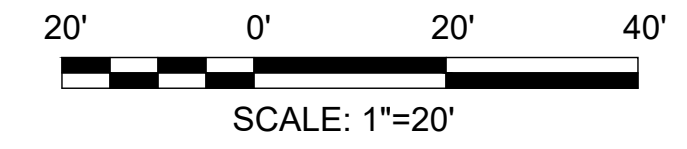
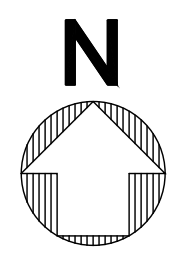
PROJECT LIMIT

LEGEND:
PROJECT LIMIT



KEY MAP
SCALE: 1" = 400'

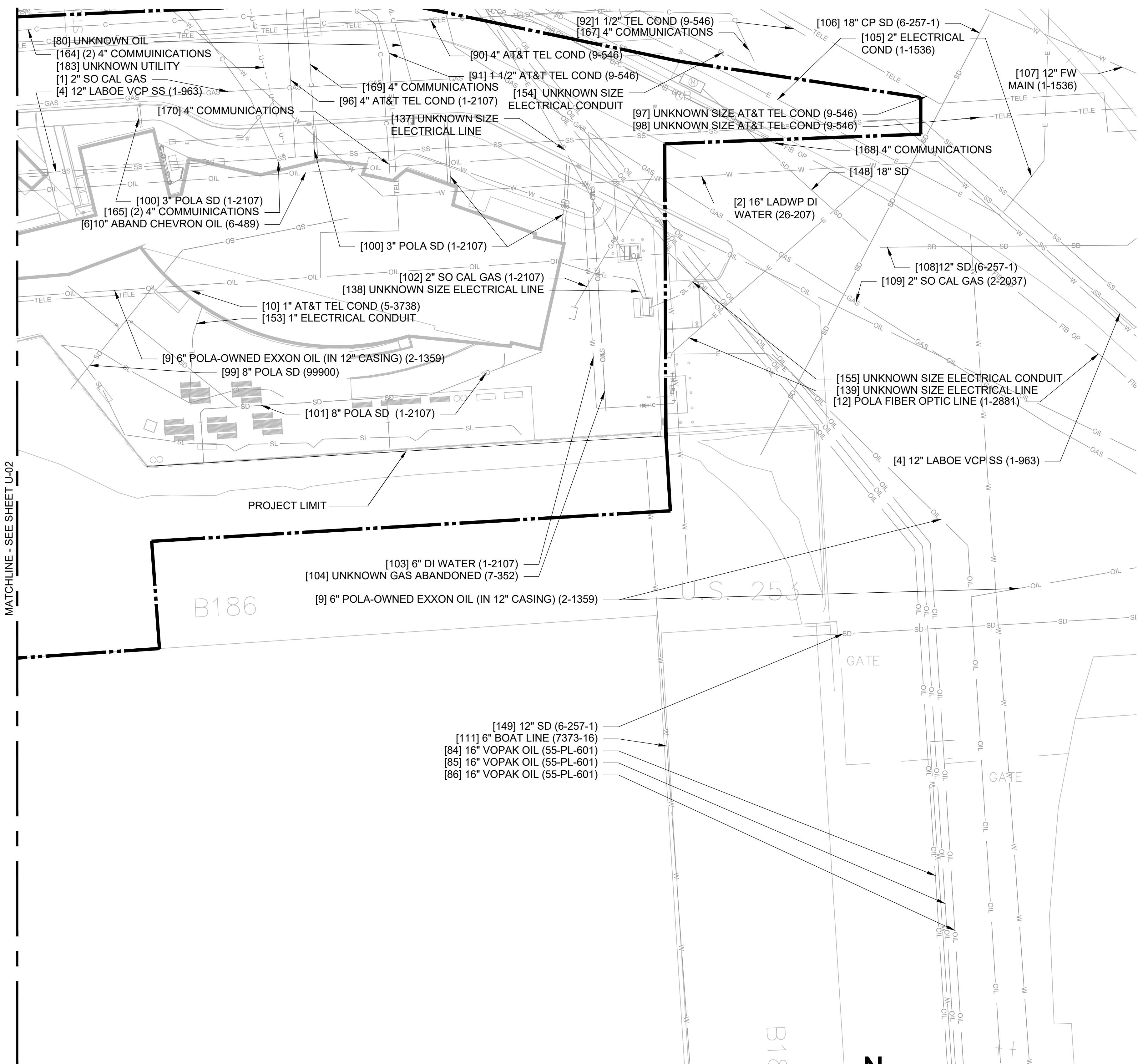
1U-02 EXISTING UTILITY PLAN - AREA 2
U-02 SCALE: 1" = 20'



100% CONSTRUCTION DOCUMENTS 6-14-2018

NO. DATE DRAWN REVISIONS -				CHKD	APPD	NO. DATE DRAWN REVISIONS -				CHKD	APPD	SCALE: AS SHOWN		CHIEF OF DESIGN		WILMINGTON WATERFRONT PROMENADE	
												DRAWN: C. CASTRO		ASSISTANT CHIEF HARBOR ENGINEER		EXISTING UTILITY PLAN - AREA 2	
												CHECKED: D. SAMARO		CHIEF HARBOR ENGINEER		THE PORT OF LOS ANGELES	
												DESIGNED: C. CASTRO		DATE		ENGINEERING DIVISION	
												ENGINEER / ARCHITECT				425 S. PALOS VERDES STREET SAN PEDRO CA 90731-3309	
																DRAWING NUMBER SHEET NUMBER	
																1-3192 U-02	
1	2	3	4	5	6	7	8	9	10	11	12	13	14				

DWG: N:\cad\project\1-3192 Wilmington Waterfront Promenade\Production\U-02 TO U-07.dwg USER: castro
 DATE: Jun 13, 2018 5:35pm XREFS: 1-3192 SUBMITTAL STAMP 1-3192 KP-XREF 1-3192 LS-XREF 1-3192 LW-XREF 1-3192 TOPO 1-3192 SUBS 1-3192 U-XREF IMAGES\ELE\00060_50 GXY944000-w17_50 M1070P_25



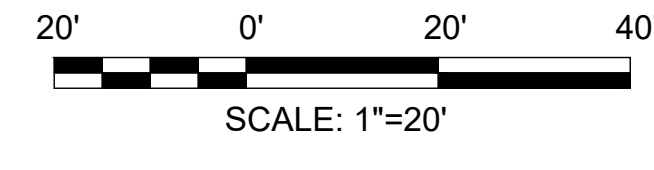
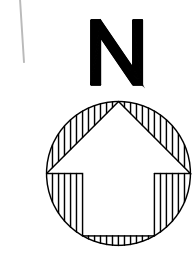
MATCHLINE - SEE SHEET U-02

B186

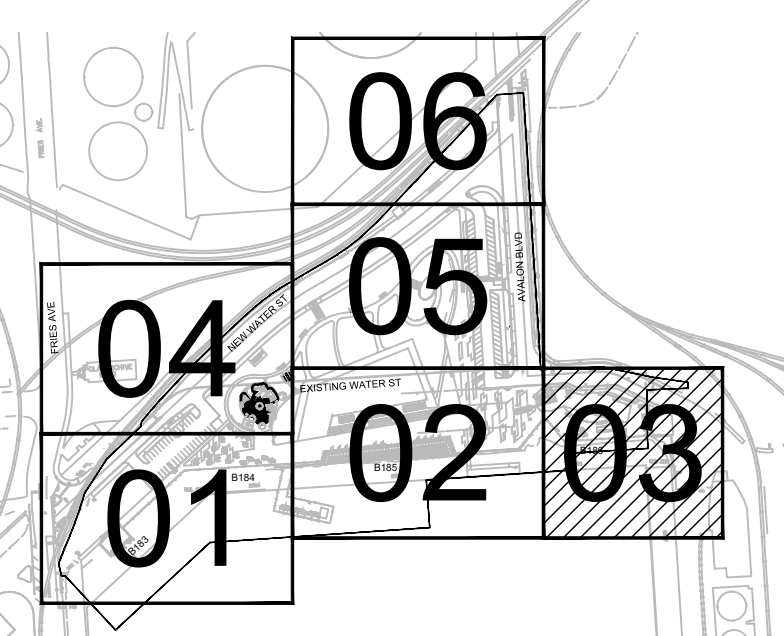
U.S. 253

B18

1U-03
U-03 **EXISTING UTILITY PLAN - AREA 3**
SCALE: 1" = 20'



LEGEND:
PROJECT LIMIT



KEY MAP
SCALE: 1" = 400'

100% CONSTRUCTION DOCUMENTS 6-14-2018

NO. DATE DRAWN REVISIONS				CHKD	APPD	NO. DATE DRAWN REVISIONS				CHKD	APPD	SCALE: AS SHOWN		CHIEF OF DESIGN		WILMINGTON WATERFRONT PROMENADE	
												DRAWN: C. CASTRO		ASSISTANT CHIEF HARBOR ENGINEER		EXISTING UTILITY PLAN - AREA 3	
												CHECKED: D. SAMARO		CHIEF HARBOR ENGINEER		THE PORT OF LOS ANGELES	
												DESIGNED: C. CASTRO		DATE		ENGINEERING DIVISION	
												ENGINEER / ARCHITECT				425 S. PALMS VERDES STREET SAN PEDRO CA 90731-3309	
																DRAWING NUMBER SHEET NUMBER	
																1-3192 U-03	

DWG: N:\cad\project\1-3192 Wilmington Waterfront Promenade\Production\U-03 TO U-07.dwg USER: castro DATE: Jun 13, 2018 5:35pm XREFS: 1-3192 SUBMITTAL STAMP 1-3192 KP-XREF 1-3192 LS-XREF 1-3192 LW-XREF 1-3192 TOPO 1-3192 TOPO 1-3192 SUBS 1-3192 U-XREF IMAGES\ELE\00060_50.GXD\4000-w17_50.M1070P_25

MATCHLINE - SEE SHEET U-06

- [70] 24" LABOE ABAND SS (6-1014)
- [47] 12" SHELL OIL (6-1187)
- [48] 18" SHELL OIL (6-1187)
- [49] 18" SHELL OIL (6-1187)
- [50] 12" PHILLIPS 66 OIL (6-1187)

- [41] 10" PARAMOUNT 160 OIL (GX150)
- [42] 12" PARAMOUNT 150 OIL (GX150)
- [43] 12" PARAMOUNT 140 OIL (GX150)
- [201] UNKNOWN OWNER OIL

- [157] 1 1/2" ELECTRICAL CONDUIT (32242)
- [156] 1" ELECTRICAL CONDUIT (32242)
- [188] UNKNOWN UTILITY
- [198] 6" ABANDONED WATER (26-207)

- [39] 12" VALERO OIL (826-A)
- [77] UNKNOWN OIL
- [71] 6" UNKNOWN OWNER OIL (7-325)
- [78] 4" UNKNOWN OWNER OIL (7-325)
- [136] UNKNOWN SIZE ELECTRICAL LINE

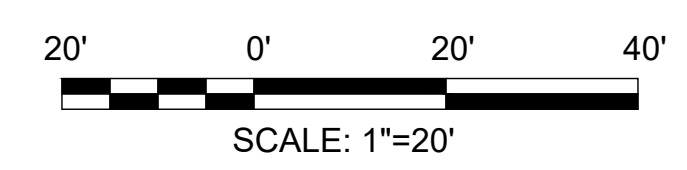
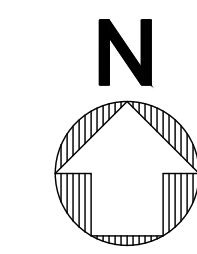
[187] UNKNOWN UTILITY

- [186] UNKNOWN UTILITY
- [166] UNKNOWN SIZE COMMUNICATIONS
- [163] (4) 4" COMMUNICATIONS
- [185] UNKNOWN UTILITY
- [91] 1 1/2" AT&T TEL COND (9-546)
- [83] 8" LADWP WATER (26-207)
- [84] 16" VOPAK OIL (55-PL-601)
- [90] 4" AT&T TEL COND (9-546)
- [92] 1 1/2" TEL COND (9-546)
- [85] 16" VOPAK OIL (55-PL-601)
- [184] UNKNOWN UTILITY
- [86] 16" VOPAK OIL (55-PL-601)
- [87] 32" LABOE BRICK SD (6-993)
- [88] 16" LABOE ABAND SS (1-963)
- [89] 8" LABOE CIP SS (1-963)
- [93] 15" SD
- [164] (2) 4" COMMUNICATIONS
- [163] (4) 4" COMMUNICATIONS

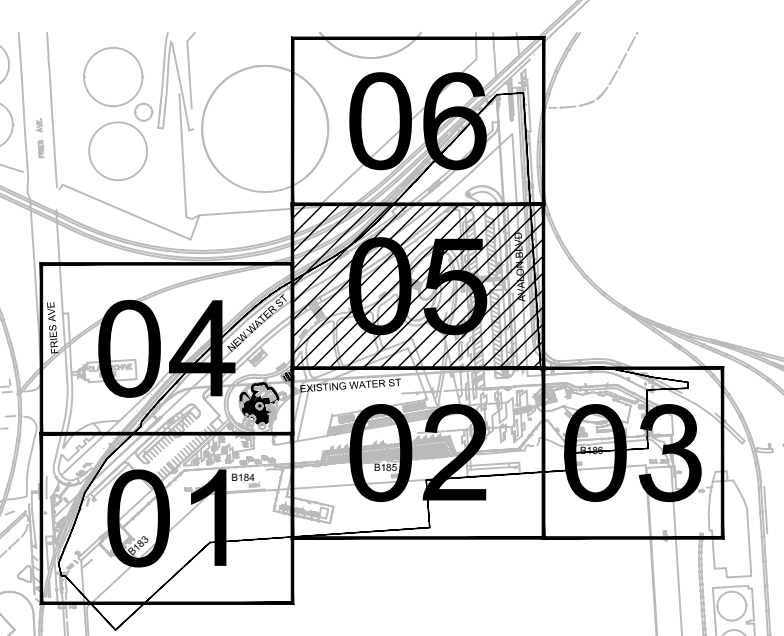
[165] (2) 4" COMMUNICATIONS

MATCHLINE - SEE SHEET U-02

1U-05 EXISTING UTILITY PLAN - AREA 5
SCALE: 1" = 20'



LEGEND:
PROJECT LIMIT



KEY MAP
SCALE: 1" = 400'

100% CONSTRUCTION DOCUMENTS 6-14-2018

NO.	DATE	DRAWN	REVISIONS	CHKD	APPD	NO.	DATE	DRAWN	REVISIONS	CHKD	APPD

SCALE: AS SHOWN	CHIEF OF DESIGN
DRAWN: C. CASTRO	ASSISTANT CHIEF HARBOR ENGINEER
CHECKED: D. SAMARO	
DESIGNED: C. CASTRO	
ENGINEER / ARCHITECT	
	CHIEF HARBOR ENGINEER
	DATE

WILMINGTON WATERFRONT PROMENADE

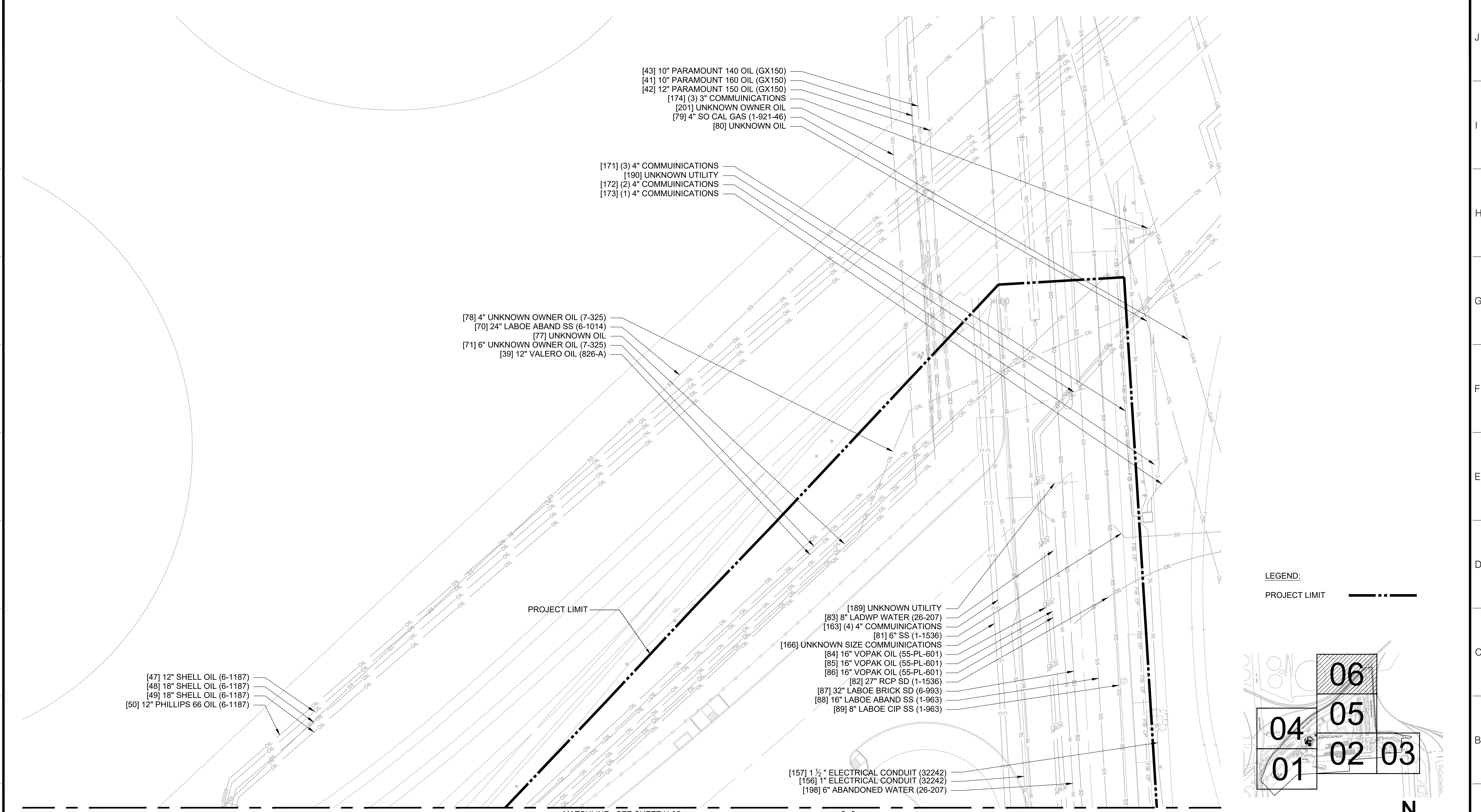
EXISTING UTILITY PLAN - AREA 5

THE PORT OF LOS ANGELES
ENGINEERING DIVISION
 425 S. PALMS VERDES STREET SAN PEDRO CA 90731-3309

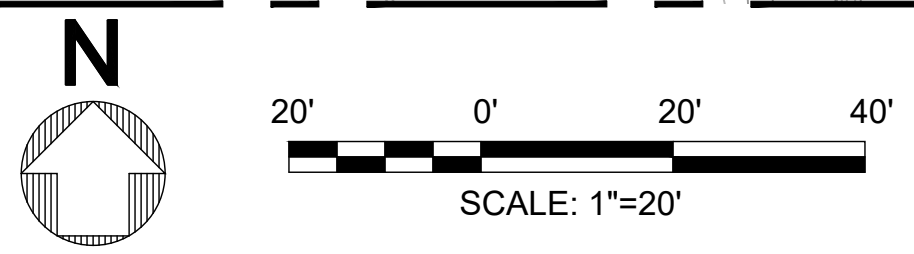
DRAWING NUMBER: 1-3192 U-05 SHEET NUMBER: U-05

DWG: N:\cad\project\1-3192 Wilmington Waterfront Promenade\Production\U-05 TO U-07.dwg USER: castro
 DATE: Jun 13, 2018 5:36pm XREFS: 1-3192 SUBS 1-3192 TOPO 1-3192 U-XREF IMAGES\ELE\00060_50.GXD\4000x17_50.M1070P_25

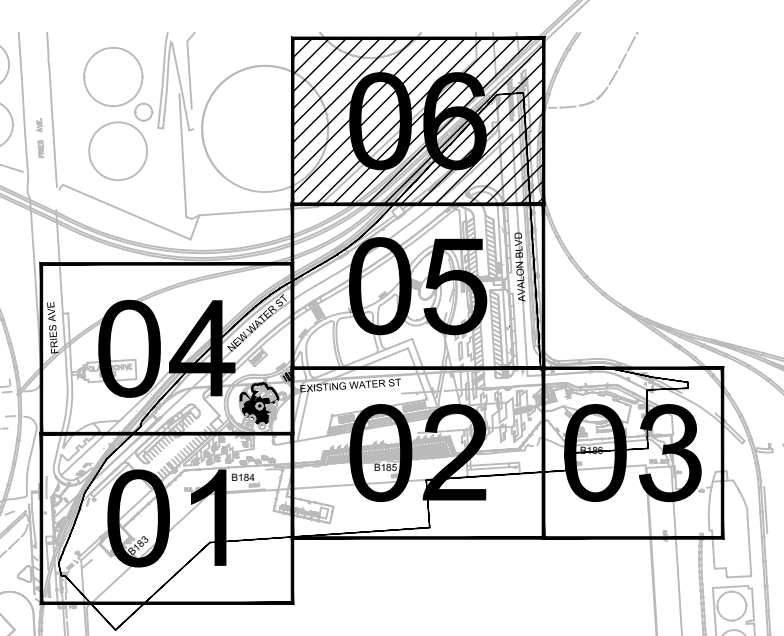
DWG: N:\cad\project\1-3192 Wilmington Waterfront Promenade\Production\U-06 TO U-07.dwg USER: castro
 DATE: Jun 13, 2018 5:35pm XREFS: 1-3192 SUBS 1-3192 U-XREF IMAGES\ELE\00060_50.GXD\4000-w17_50.M1070P_25
 P:\CAD\PROJ_192012.RB



1U-06 EXISTING UTILITY PLAN - AREA 6
 U-06 SCALE: 1" = 20'



LEGEND:
 PROJECT LIMIT



KEY MAP
 SCALE: 1" = 400'

100% CONSTRUCTION DOCUMENTS 6-14-2018

NO. DATE DRAWN REVISIONS -				CHKD	APPD	NO. DATE DRAWN REVISIONS -				CHKD	APPD	SCALE: AS SHOWN		CHIEF OF DESIGN		WILMINGTON WATERFRONT PROMENADE			
												DRAWN: C. CASTRO		ASSISTANT CHIEF HARBOR ENGINEER		EXISTING UTILITY PLAN - AREA 6			
												CHECKED: D. SAMARO		ENGINEER / ARCHITECT		THE PORT OF LOS ANGELES ENGINEERING DIVISION 425 S. PALMS VERDES STREET SAN PEDRO CA 90731-3309			
												DESIGNED: C. CASTRO		CHIEF HARBOR ENGINEER		DRAWING NUMBER		SHEET NUMBER	
														DATE		1-3192		U-06	