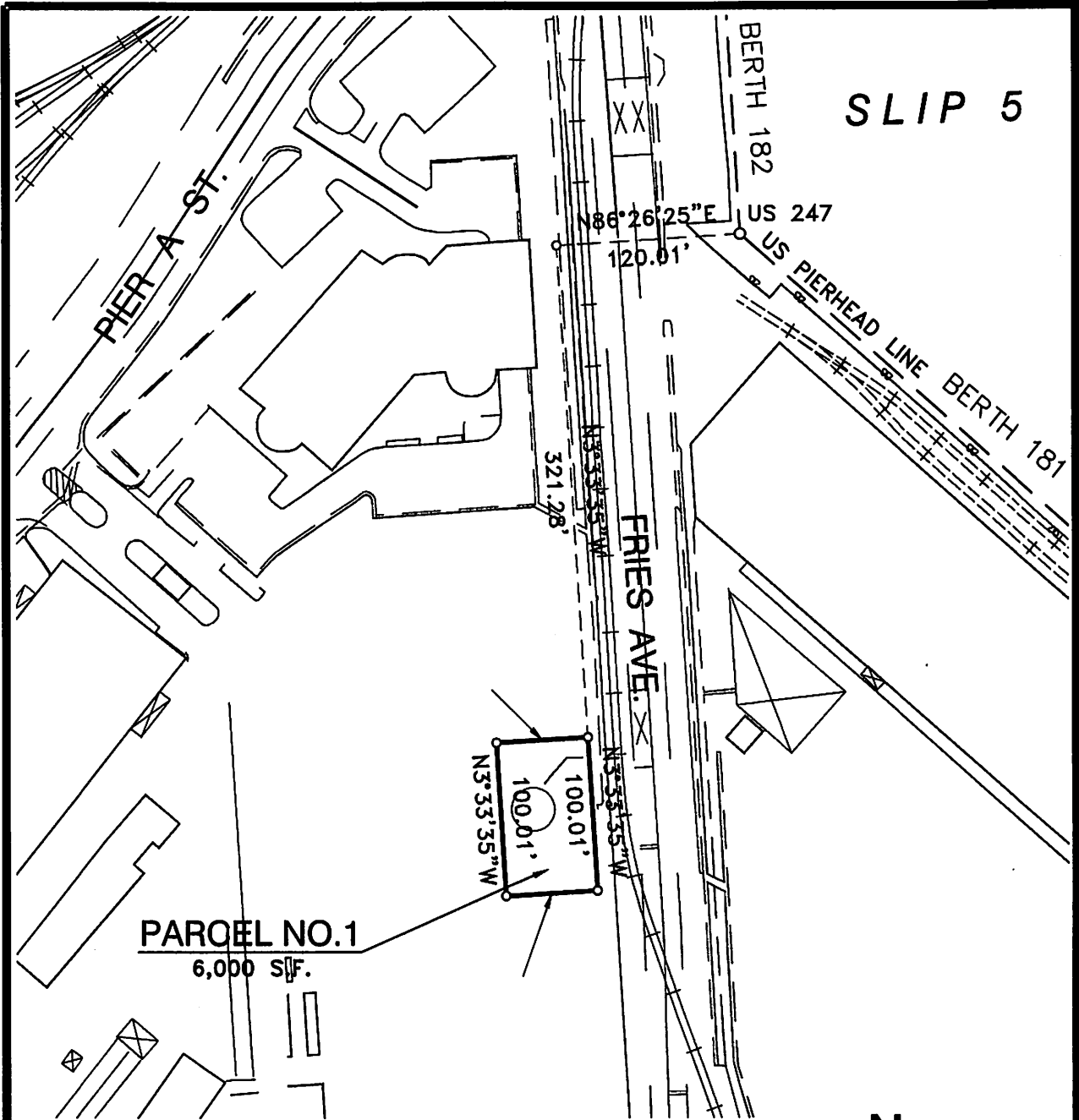


POLAPROS_VER.1_12/96
 5-4225-1

SCALE: 1"=80'		DATE:		RECOMMENDED FOR APPROVAL		PERMIT MAP - AUTHORITY NO. P353	
DRAWN: PSOMAS		DATE: 7/7/83		 CHIEF OF DESIGN		LOS ANGELES CITY, GENERAL SERVICES DEPARTMENT	
CHECKED: PSOMAS		DATE: 7/1/83					
DESIGNED: PSOMAS		DATE: 3/2/83		 ASSISTANT CHIEF HARBOR ENGINEER		THE PORT OF LOS ANGELES <small>DIVISION OF PORTS AND MARINE SERVICES, CALIFORNIA DEPARTMENT OF TRANSPORTATION</small>	
OWNER/ARCH:							
 CHIEF HARBOR ENGINEER						DRAWING NUMBER 5-4225-1	

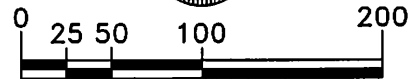
SLIP 5



PARCEL NO. 1
6,000 S.F.


NOTE:

- 1) No substructures are shown on this drawing. Accurate substructure information must be obtained from lessees and L.A.H.D. engineering records.
- 2) Horizontal Datum is based on the North American Datum of 1983 (NAD 83), California Coordinate System, Zone 5, Feet.
- 3) All distances shown on this drawing are grid distances. To obtain a reasonable representation of the ground distance, divide the distance herein by the average scale factor of 1.000076.

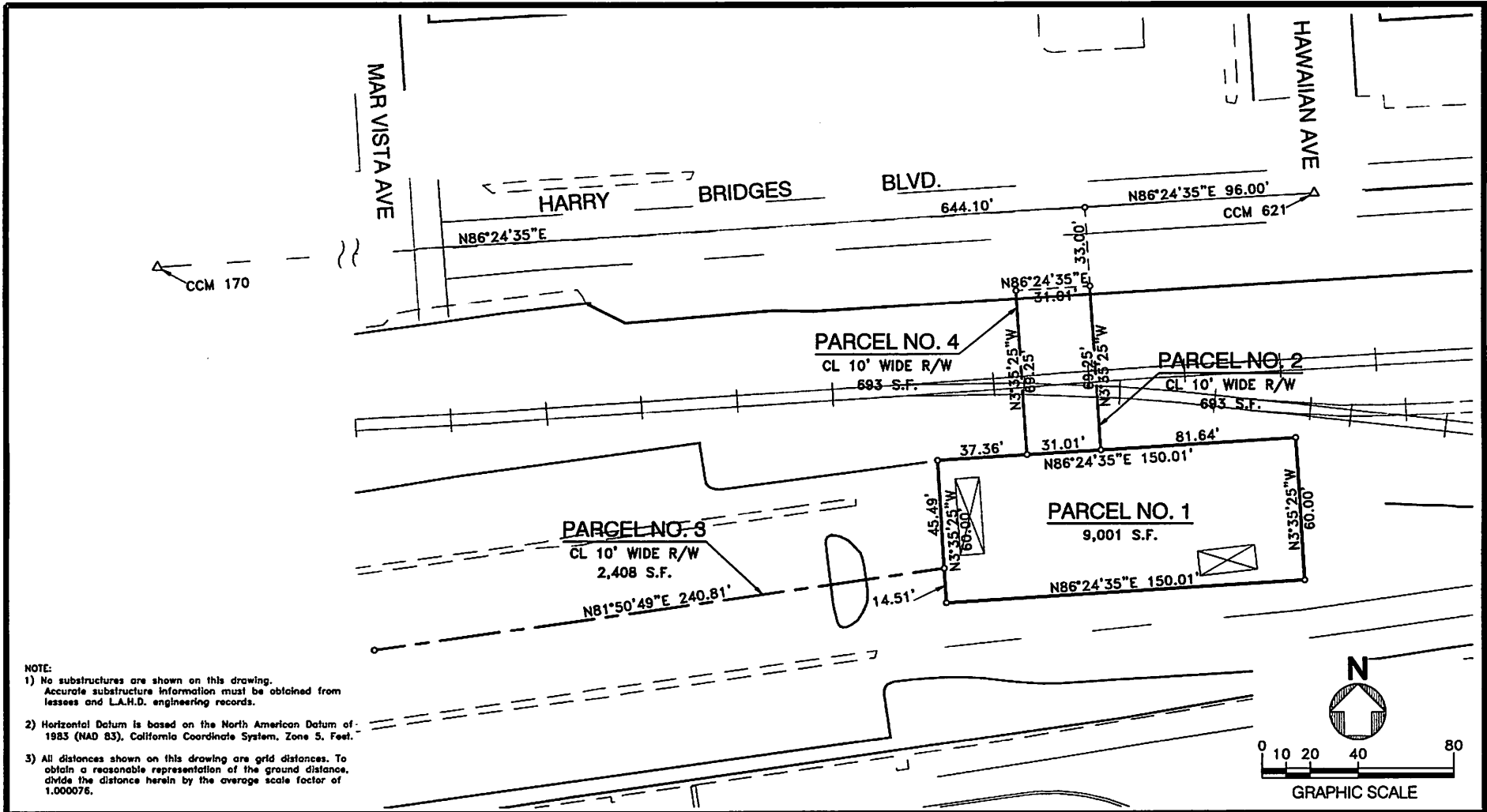



GRAPHIC SCALE

REV. NO. 1 - CHANGED AUTHORITY NUMBER (05/14) *ARR ml*

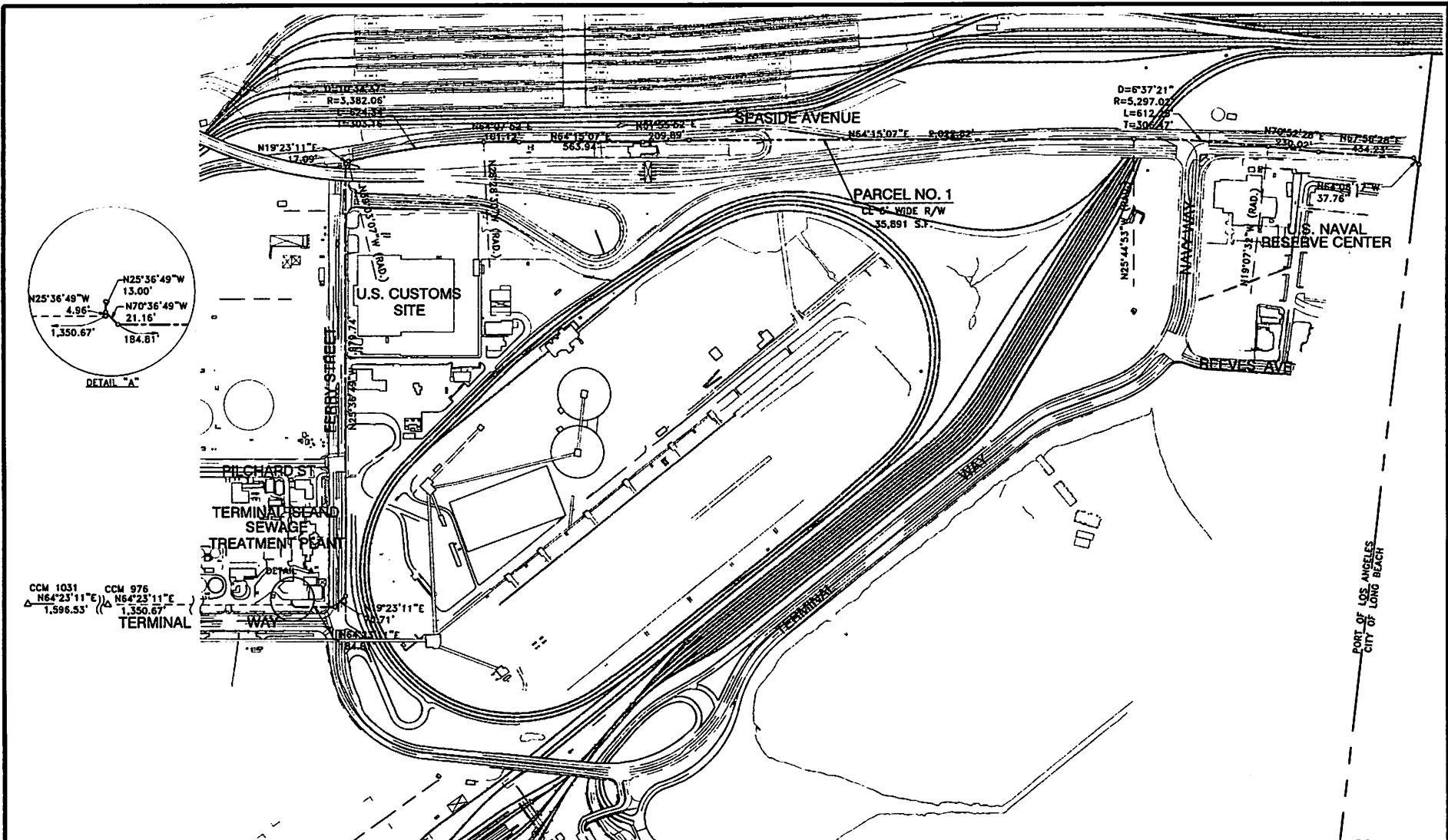
SCALE: 1" = 100'		DATE:		RECOMMENDED FOR APPROVAL		PERMIT MAP - AUTHORITY NO. P353	
DRAWN: PSOMAS		4/03		CHIEF OF DESIGN		LOS ANGELES CITY, PUBLIC WORKS	
CHECKED: PSOMAS		4/03		<i>[Signature]</i>			
DESIGNED: PSOMAS				<i>[Signature]</i>			
ENGR/ARCH		ASSISTANT CHIEF HARBOR ENGINEER		APPROVED		 THE PORT OF LOS ANGELES <small>ENGINEERING DIVISION P.O. BOX 131 644 PIEDRO, CA 92704-0131</small>	
<i>[Signature]</i>		<i>[Signature]</i>		<i>[Signature]</i>			
						DRAWING NUMBER 5-1839-2	

POLA0505_VER.1_12/96
5-1839-2 REV 1

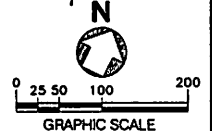


NO.	DATE	DRAWN	REVISIONS -	CH'KD	APP'D	SCALE: 1"=40'	RECOMMENDED FOR APPROVAL	PERMIT MAP - AUTHORITY NO. P353	
1	05/14	DRR	CHANGED AUTHORITY NO. FROM 03469 TO P353	DRR	DRR	DRAWN: PSOMAS 4/03 CHECKED: PSOMAS 4/03 DESIGNED: PSOMAS 4/03 ENGR/ARCH	CHIEF OF DESIGN <i>[Signature]</i> ASSISTANT CHIEF HARBOR ENGINEER <i>[Signature]</i>	APPROVED <i>Stacey S Jones</i> CHIEF HARBOR ENGINEER	LOS ANGELES CITY, PUBLIC WORKS  THE PORT OF LOS ANGELES <small>ENGINEERING DIVISION 720 BOX 61 SAN PEDRO, CA 90730</small>
									DRAWING NUMBER 45486-1

POLARON_VCR_1_12/14
 45486-1 REV 1



NOTE:
 1) No substructure are shown on this drawing. Accurate substructure information must be obtained from boring and L.A.N.D. engineering records.
 2) Horizontal Datum is based on the North American Datum of 1983 (NAD 83), California Coordinate System, Zone 5, Feet.
 3) All distances shown on this drawing are grid distances. To obtain a reasonable representation of the ground distance, divide the distance herein by the average scale factor of 1.000018.



NO.	DATE	DRAWN	REVISIONS -	CHK'D	APP'D	SCALE:	CHIEF OF DESK	PERMIT MAP - AUTHORITY NO. P353
1	05/14	DRR	CHANGED AUTHORITY NO. FROM 02480 TO P333	DRR	<i>[Signature]</i>	1"=300'	<i>[Signature]</i>	LOS ANGELES CITY, PUBLIC WORKS
							ASSISTANT CHIEF HARBOR ENGINEER	
							<i>[Signature]</i>	
							ENGR/ARCH	
							<i>[Signature]</i>	
							CHIEF HARBOR ENGINEER	
							<i>[Signature]</i>	
							DATE	

THE PORT OF LOS ANGELES
 ENGINEERING DIVISION P.O. BOX 181 SAN PEDRO, CA 90720-0181

DRAWING NUMBER
2-2451