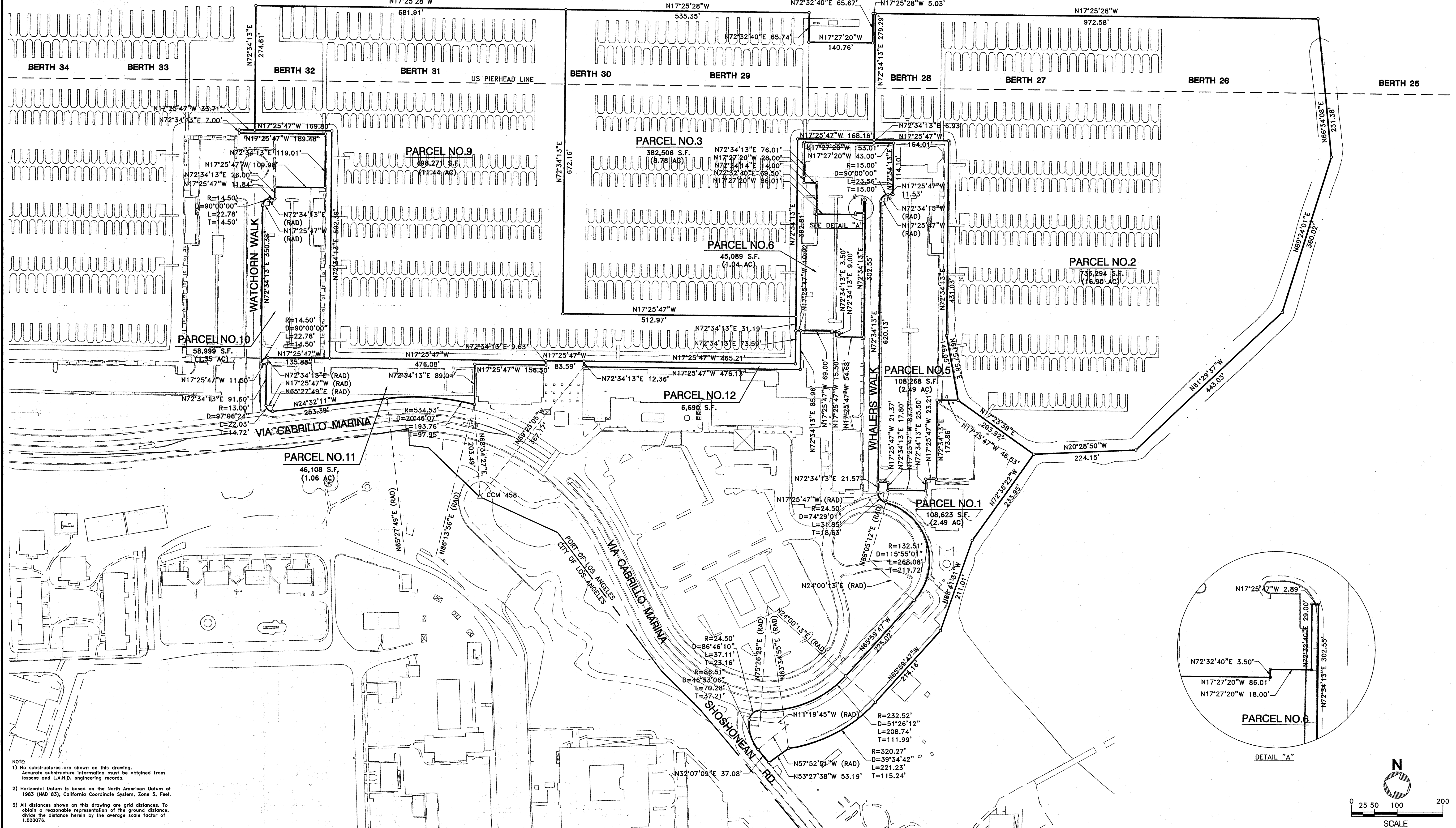
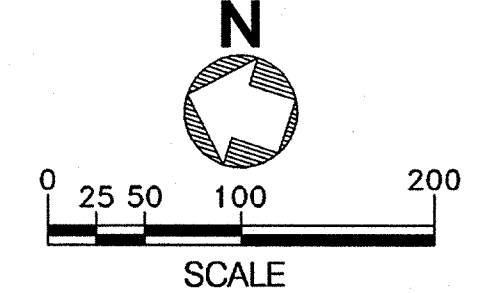


WEST CHANNEL



NOTE:
 1) No substructures are shown on this drawing. Accurate substructure information must be obtained from lessors and L.A.H.D. engineering records.
 2) Horizontal Datum is based on the North American Datum of 1983 (NAD 83), California Coordinate System, Zone 5, Feet.
 3) All distances shown on this drawing are grid distances. To obtain a reasonable representation of the ground distance, divide the distance herein by the average scale factor of 1.000076.



NO. DATE DRAWN REVISIONS -				APP'D NO. DATE DRAWN RE				APP'D SCALE: 1"=100'				PERMIT MAP - AUTHORITY NO. CA791			
								DRAWN: PSOMAS 6/03/2012				CALIFORNIA YACHT MARINA-CABRILLO LLC			
								CHECKED: PSOMAS 6/03/2012				THE PORT OF LOS ANGELES			
								DESIGNED: PSOMAS 6/03/2012				ENGINEERING DIVISION P.O. BOX 151 SAN PEDRO, CA 90733-0151			
								ENGR/ARCH				DRAWING NUMBER			
								Engr. R. Rasmussen				1-2195-1			
								John J. [Signature]							
								DATE							

TRANSMITTAL 2

1-2195-1