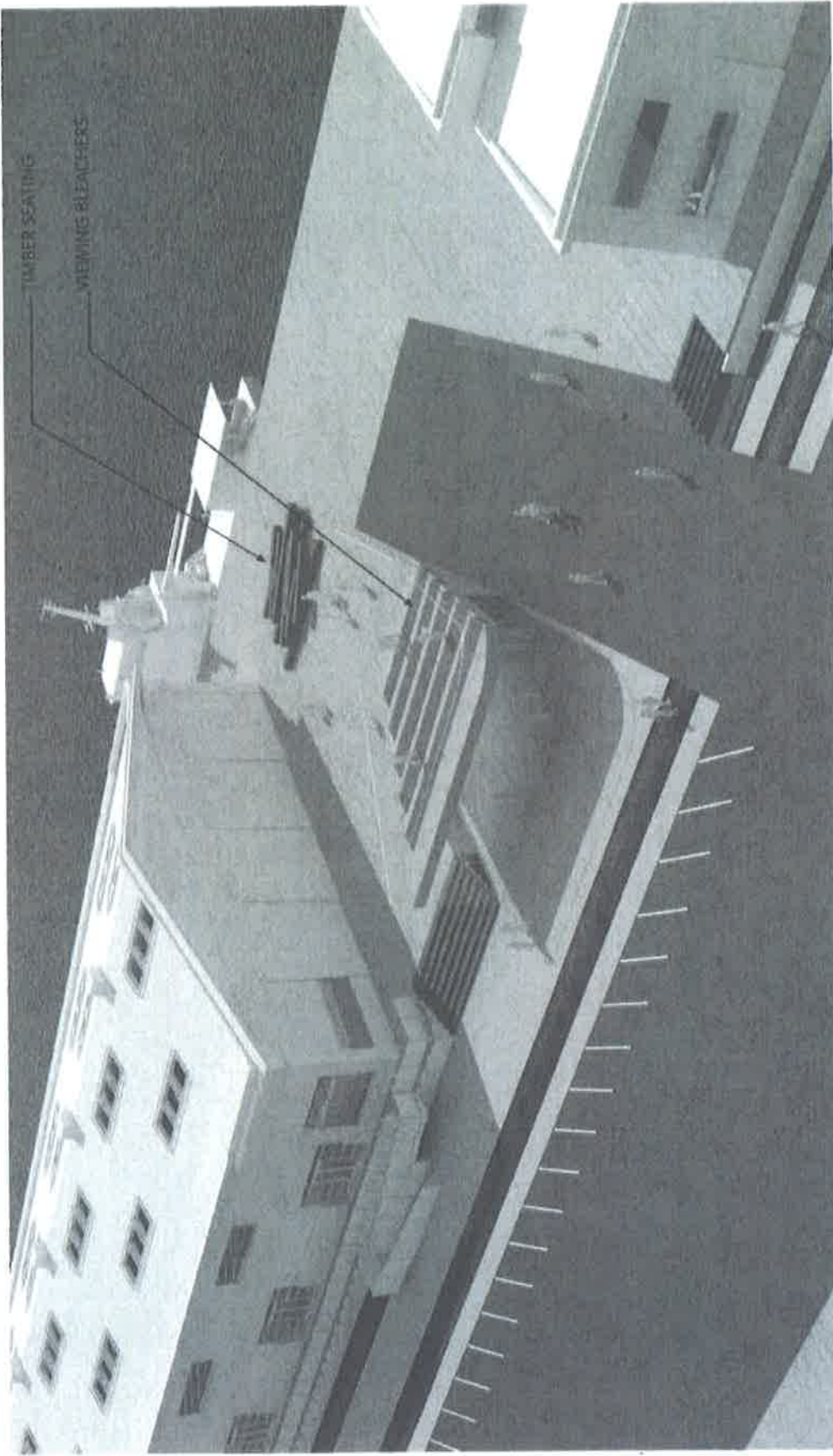


**03 LAUNCH PLAZA W/ PAVILION**  
NORTH-EAST AERIAL VIEW

Phase  
1A  
2016/17



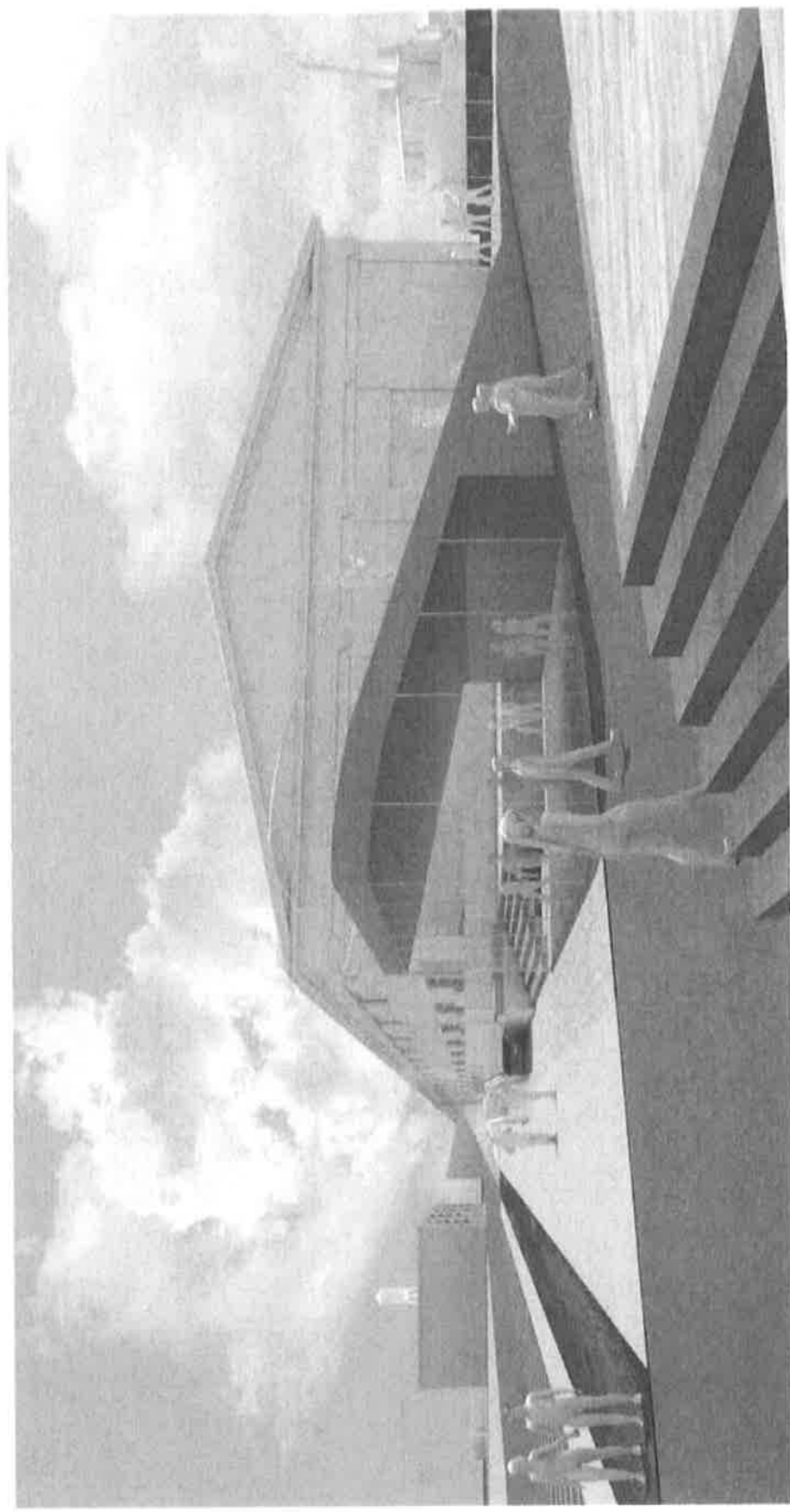
DISCLAIMER: Recommended phasing proposal is subject to successful lease agreement, execution, fundraising, adoption of supplemental EIR and associated permitting and final Alameda Board and Port of Los Angeles approvals.

10000th Ave. + Gensler  
Engineering + Architecture

Phase  
1A  
2016/17

# 03 LAUNCH PLAZA W/ PAVILION

PAVILION ALONG LINEAR PARK CAN HOST COFFEE BAR, INFORMATION ON ALTASEA AND THE SURROUNDING BUSINESS AND EDUCATION PROGRAMS



DISCLAIMER: Recommended analysis prepared is subject to success of local stakeholder association, fundraising, adoption of supplemental EIR and associated permitting and final AltaSea Design and Port of Los Angeles approvals

# 02 WHARF RETRO-FIT

STRUCTURAL UPGRADE AT LAUNCH PLAZA BERTH 57.5

EXTENT OF PROPOSED WHARF UPGRADE ZONE.  
EXISTING WHARF CAPACITY  
= 100 LBS/SQFT  
PROPOSED WHARF CAPACITY  
= 500 LBS/SQFT

SIGNAL STREET

LINEAR PARK

BERTH 57

EXISTING WHARF CAPACITY  
AT BERTH 57  
1,500 LBS/ SQ-FT  
500 LBS/ SQ-FT

BERTH 58

EXISTING WHARF CAPACITY AT BERTH 58 - 60  
1,500 LBS/ SQ-FT  
100 LBS/ SQ-FT



- 15'-0"

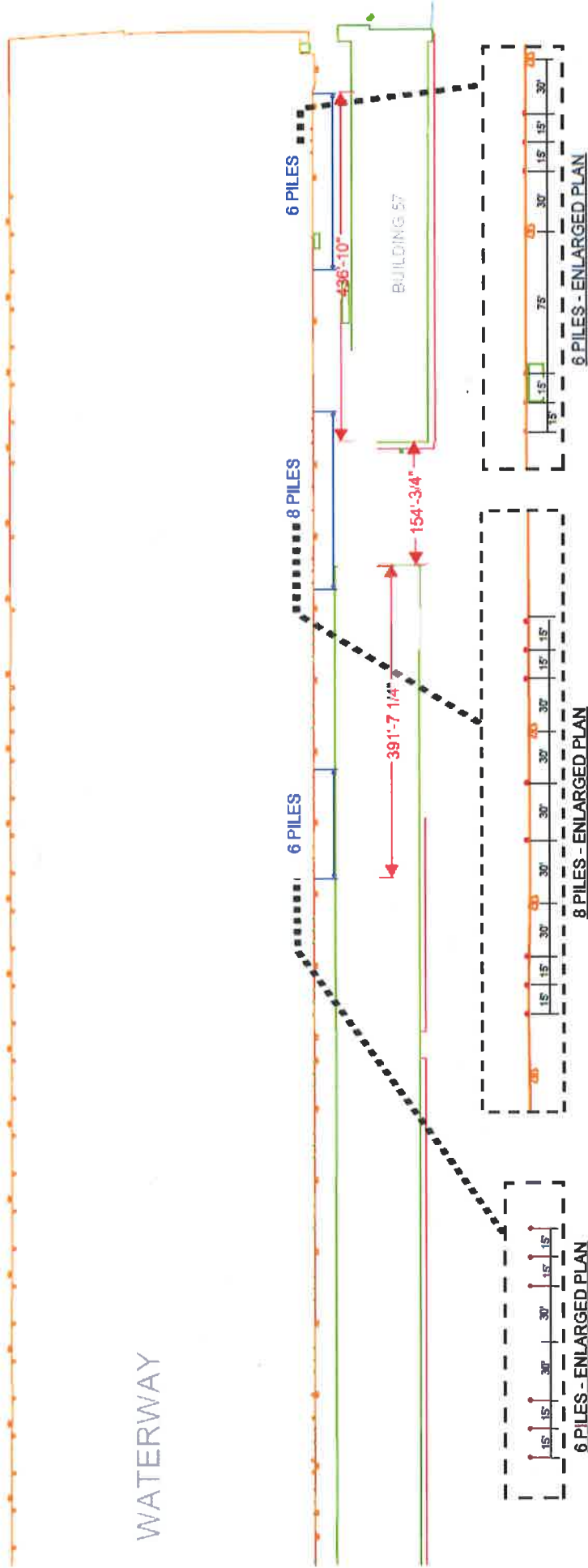
LAUNCH PLAZA/BERTH 57.5  
~ 117'-0"

REVISED 01/23/16 - GENSLER

ALTASEA | Budget: Presentation to the Board | 10.22.2015

# 02 WHARF PLAZA RETRO-FIT: VESSEL FENDERING

WATERWAY



**NOTES:**

- 1) TOTAL PILES REQUIRED: 20
- 2) MAXIMUM LOAD PER PILE DELIVERED TO WHARF DECK: 11.51 KIPS
- 3) DESIGN WIND SPEED: 60 MPH 3-SEC GUST (52.4 MPH 30-SEC GUST)
- 4) DIMENSIONS FOR TIMBER PILES GIVEN ARE APPROXIMATE. PILE LOCATIONS TO BE FIELD COORDINATED.
- 5) PILES SHALL BE COATED WITH CREOSOTE PRIOR TO INSTALLATION
- 6) PILES SHALL BE WRAPPED IN PLASTIC AFTER INSTALLATION.

**FENDER PILE REQUIREMENTS:**

- MIN. PILE BUTT DIAMETER - 13 INCHES
- MIN. PILE TIP DIAMETER - 8 INCHES
- MIN. PILE LENGTH - 62 FEET
- SPECIES - PACIFIC COAST DOUGLAS FIR



400 OCEANGATE, SUITE 500  
LONG BEACH, CA 90802  
(562) 437-9100