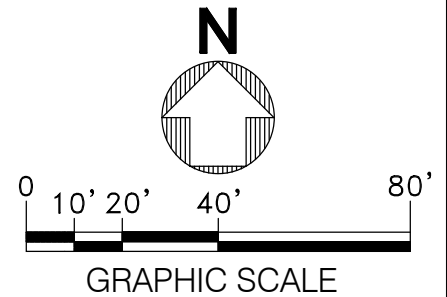


NOTE:

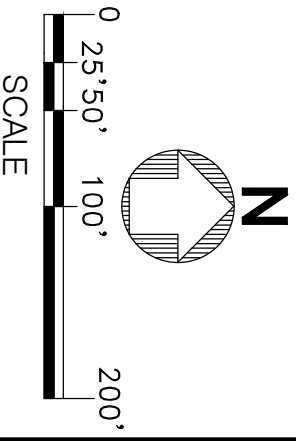
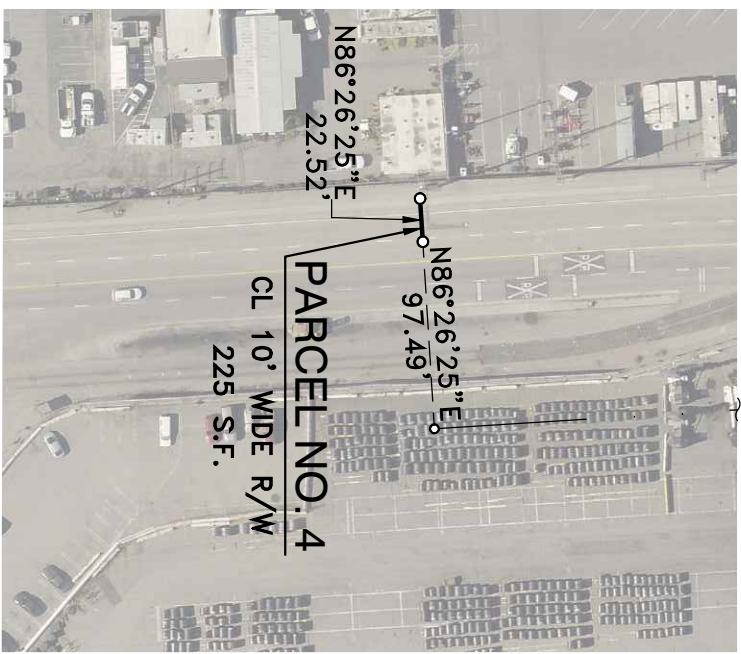
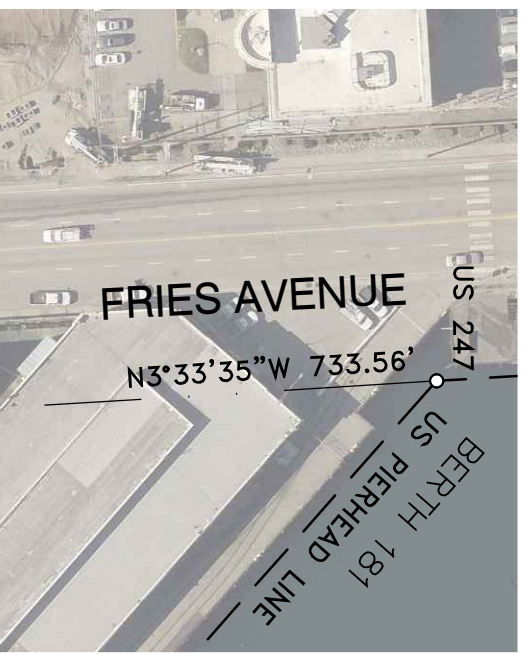
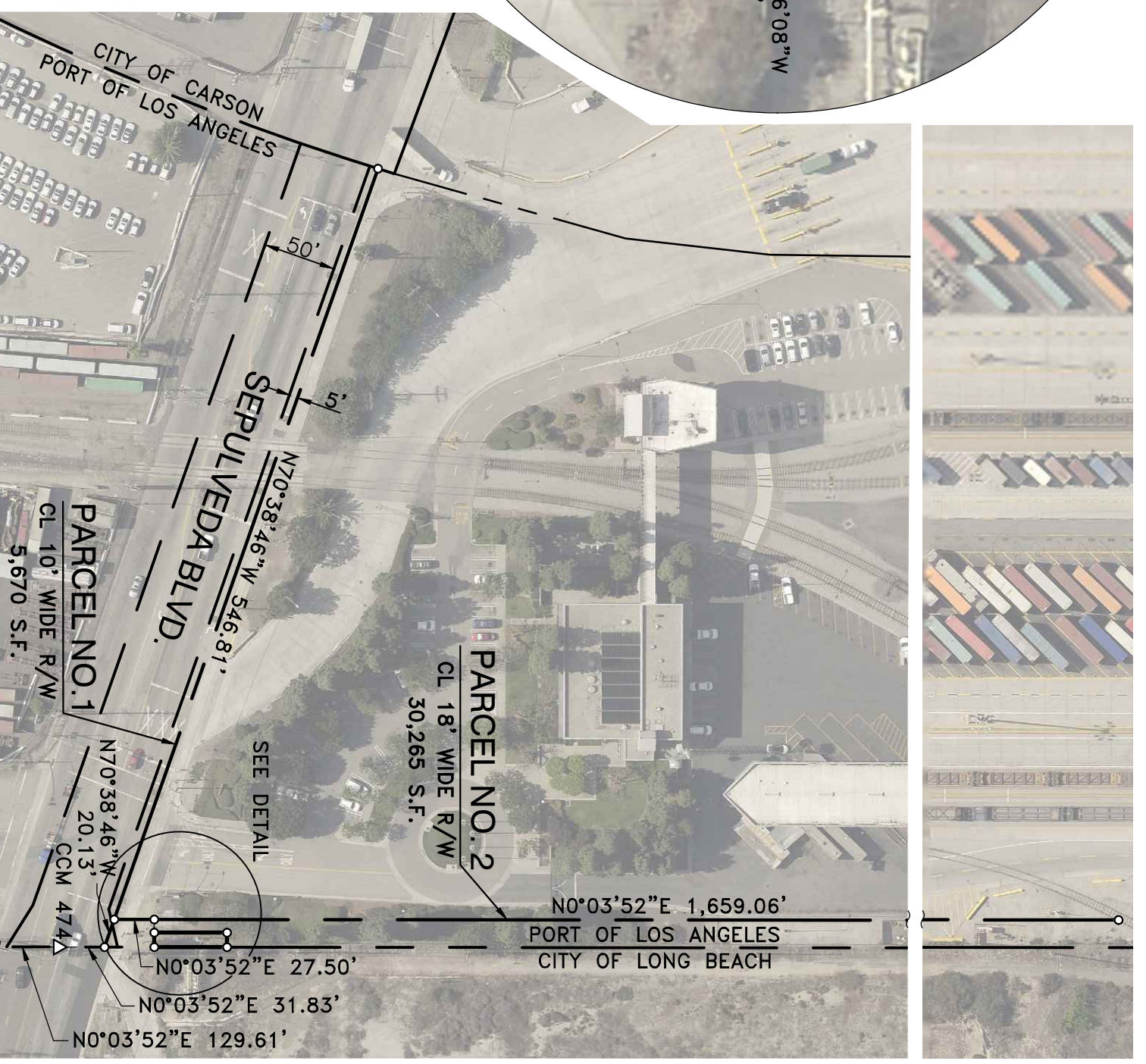
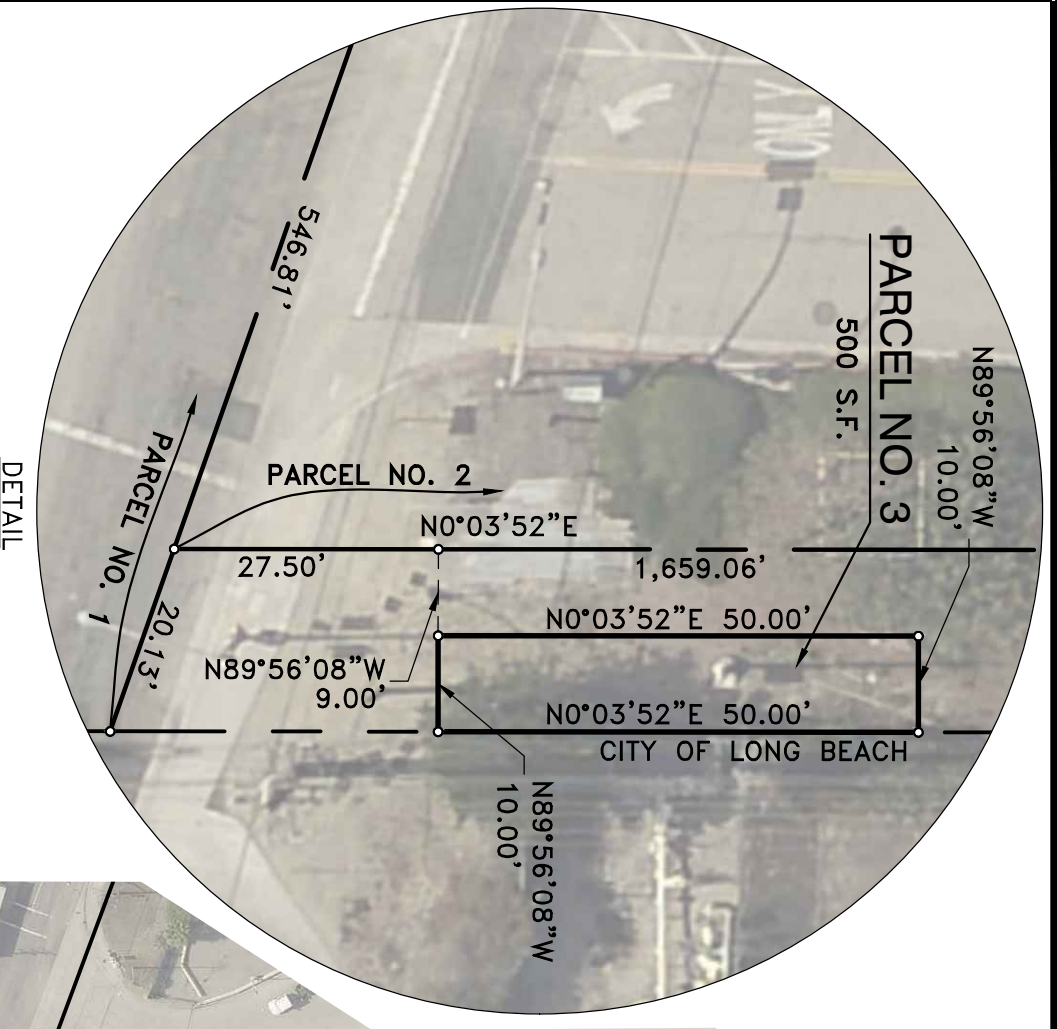
- 1) No substructures are shown on this drawing. Accurate substructure information must be obtained from lessees and L.A.H.D. engineering records.
- 2) Horizontal Datum is based on the North American Datum of 1983 (NAD 83), California Coordinate System, Zone 5, Feet.
- 3) All distances shown on this drawing are grid distances. To obtain a reasonable representation of the ground distance, divide the distance herein by the average scale factor of 1.000076.



DWG: N:\cadd\pola\B.O.W\LEAS\Signed Drawings\5-7349.dwg USER: RAASCHD
 DATE: Nov 08, 2017 2:24pm XREFS\BDRY-POLA_BDRY-CITY IMAGES\L4_6487_1746a
 POLAPR05_VER.1_11/12/96
 5-7349.DWG

SCALE: 1" = 40' DRAWN: DRR 10/17 CHECKED: PH 10/17 DESIGNED: D. RAASCH ENGR/ARCH <i>Daryl R. Raasch</i>	CHIEF OF DESIGN <i>Monte Lough</i> ASSISTANT CHIEF OF HARBOR ENGINEER <i>Stuart L. Fricks</i> CHIEF HARBOR ENGINEER <i>D. M. Wall</i>	PERMIT MAP - AUTHORITY NO. P923 EQUILON ENTERPRISES LLC dba SHELL OIL PRODUCT US THE PORT OF LOS ANGELES ENGINEERING DIVISION 425 S. PALOS VERDES STREET SAN PEDRO CA 90731-3309	DRAWING NUMBER 5-7349
---	--	---	---------------------------------

TRANSMITTAL 2



NOTE:
 1) No substructures are shown on this drawing. Accurate substructure information must be obtained from lessees and L.A.H.D. engineering records.
 2) Horizontal Datum is based on the North American Datum of 1983 (NAD 83), California Coordinate System, Zone 5, Feet.
 3) All distances shown on this drawing are grid distances. To obtain a reasonable representation of the ground distance, divide the distance herein by the average scale factor of 1.000076.

NO.	DATE	DRAWN	REVISIONS
1	10/17	DRR	REVISED & RENUMBERED PARCELS. CHANGED TENANT NAME & AUTHORITY NO.

CHK'D	APP'D
<i>DRR</i>	<i>ME</i>

SCALE: 1" = 100'
DRAWN: PSOMAS 4/03
CHECKED: PSOMAS 4/03
DESIGNED: PSOMAS 4/03
ENGR/ARCH
<i>David R. Raab</i>
<i>Adam J. Abraham</i>

RECOMMENDED FOR APPROVAL
CHIEF OF DESIGN
7/1/03
ASSISTANT CHIEF HARBOR ENGINEER
<i>Paul D. ...</i>

APPROVED
WILLIAM S. Mc ...
CHIEF HARBOR ENGINEER

PERMIT MAP - AUTHORITY NO. P923
 EQUILON ENTERPRISES LLC dba SHELL OIL PRODUCT US



THE PORT OF LOS ANGELES
 ENGINEERING DIVISION P.O. BOX 151 SAN PEDRO, CA 90729-0151

DRAWING NUMBER
 45262-1