

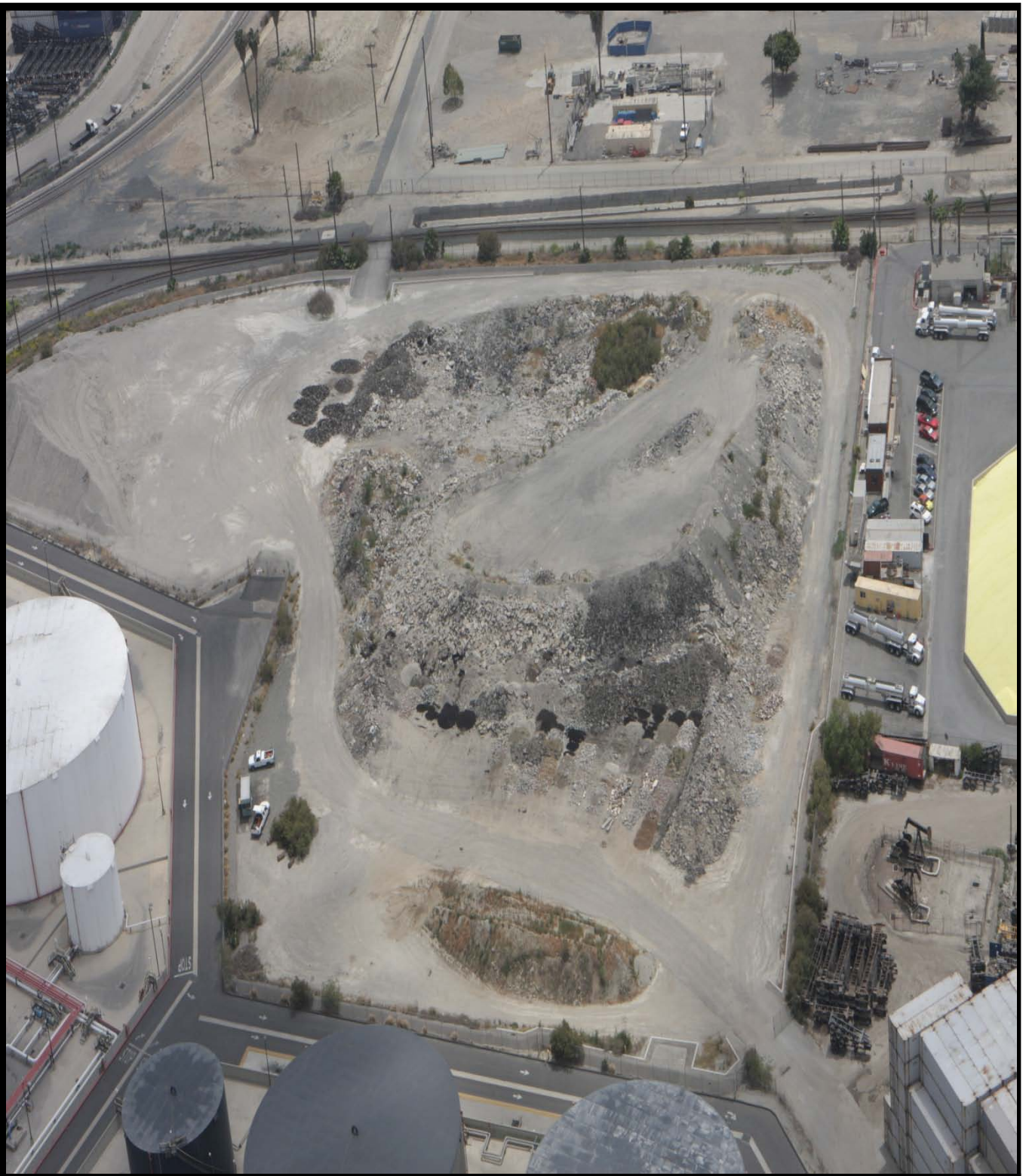
**Project Site**


SCALE	RECOMMENDED FOR APPROVAL
AS SHOWN	
DRAWN:	CHIEF OF DESIGN
CHECKED:	
DESIGNED:	
ENGR/ARCH	ASSISTANT HARBOR CHIEF ENGINEER

**Asphalt / Concrete Recycling Program 2012 - 2014**

**TRANSMITTAL 3: AERIAL & PROJECT SITE MAPS**

APPROVED	 <b>PORT OF LOS ANGELES</b> CONSTRUCTION DIVISION P.O. BOX 151 SAN PEDRO, CA 90733-0151	<b>SPEC No. 2751</b>
CHIEF HARBOR ENGINEER		



SCALE AS SHOWN	RECOMMENDED FOR APPROVAL	<b>Asphalt / Concrete Recycling Program 2012 - 2014</b>	
DRAWN:	CHIEF OF DESIGN	<b>TRANSMITTAL 3: AERIAL &amp; PROJECT SITE MAPS</b>	
CHECKED:			
DESIGNED:			
ENGR/ARCH	ASSISTANT HARBOR CHIEF ENGINEER	APPROVED	 <b>PORT OF LOS ANGELES</b> CONSTRUCTION DIVISION P.O. BOX 151 SAN PEDRO, CA 90733-0151
		CHIEF HARBOR ENGINEER	