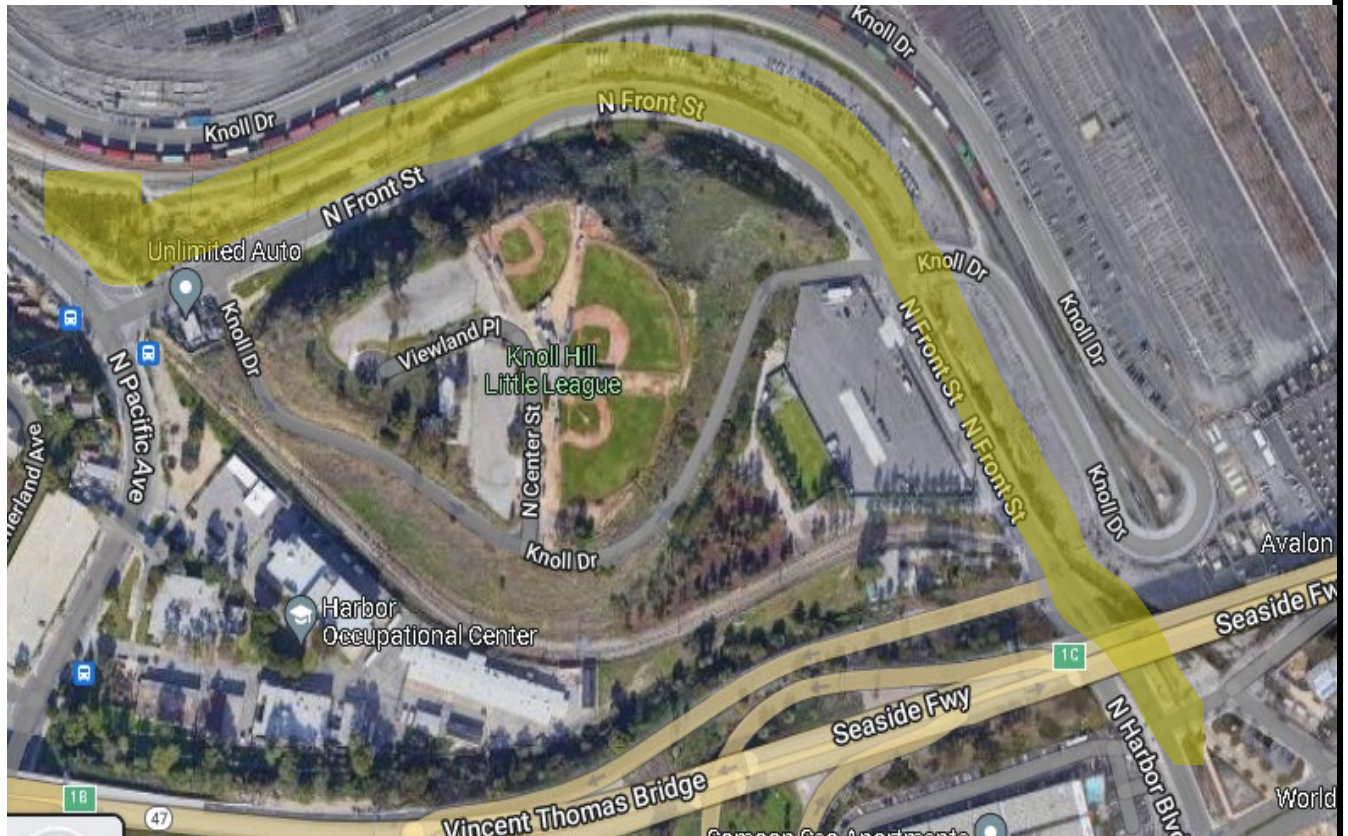





**Project
Location**

SCALE AS SHOWN	RECOMMENDED FOR APPROVAL	Front Street Beautification	
DRAWN: CHECKED: DESIGNED:	CHIEF OF DESIGN		Site Map
ENGR/ARCH			
	ASSISTANT HARBOR CHIEF ENGINEER	APPROVED CHIEF HARBOR ENGINEER	<div data-bbox="721 1792 802 1870"> </div> <div data-bbox="811 1792 1145 1874"> PORT OF LOS ANGELES CONSTRUCTION DIVISION P.O. BOX 151 SAN PEDRO, CA 90733-0151 </div> <div data-bbox="1173 1818 1356 1852">Spec No. 2761A</div>

TRANSMITTAL 1




SCALE AS SHOWN	RECOMMENDED FOR APPROVAL	Front Street Beautification		
DRAWN:	CHIEF OF DESIGN	<h1>Aerial View of Pedestrian Pathway</h1>		
CHECKED:				
DESIGNED:				
ENGR/ARCH	ASSISTANT HARBOR CHIEF ENGINEER	APPROVED	 PORT OF LOS ANGELES CONSTRUCTION DIVISION P.O. BOX 151 SAN PEDRO, CA 90733-0151	Spec No. 2761A
		CHIEF HARBOR ENGINEER		



GATEWAY PLAZA PERSPECTIVE



SCALE AS SHOWN	RECOMMENDED FOR APPROVAL	Front Street Beautification		
DRAWN:	CHIEF OF DESIGN	Project Renderings		
CHECKED:				
DESIGNED:				
ENGR/ARCH	ASSISTANT HARBOR CHIEF ENGINEER	APPROVED	 PORT OF LOS ANGELES CONSTRUCTION DIVISION P.O. BOX 151 SAN PEDRO, CA 90733-0151	Spec No. 2761A
		CHIEF HARBOR ENGINEER		