



THE PORT
OF LOS ANGELES 

A M E R I C A ' S P O R T ®

WEST HARBOR MODIFICATION PROJECT FINAL SUBSEQUENT ENVIRONMENTAL IMPACT REPORT (SEIR)

Presented by:

Nicole Enciso
Marine Environmental Supervisor

Presented to:

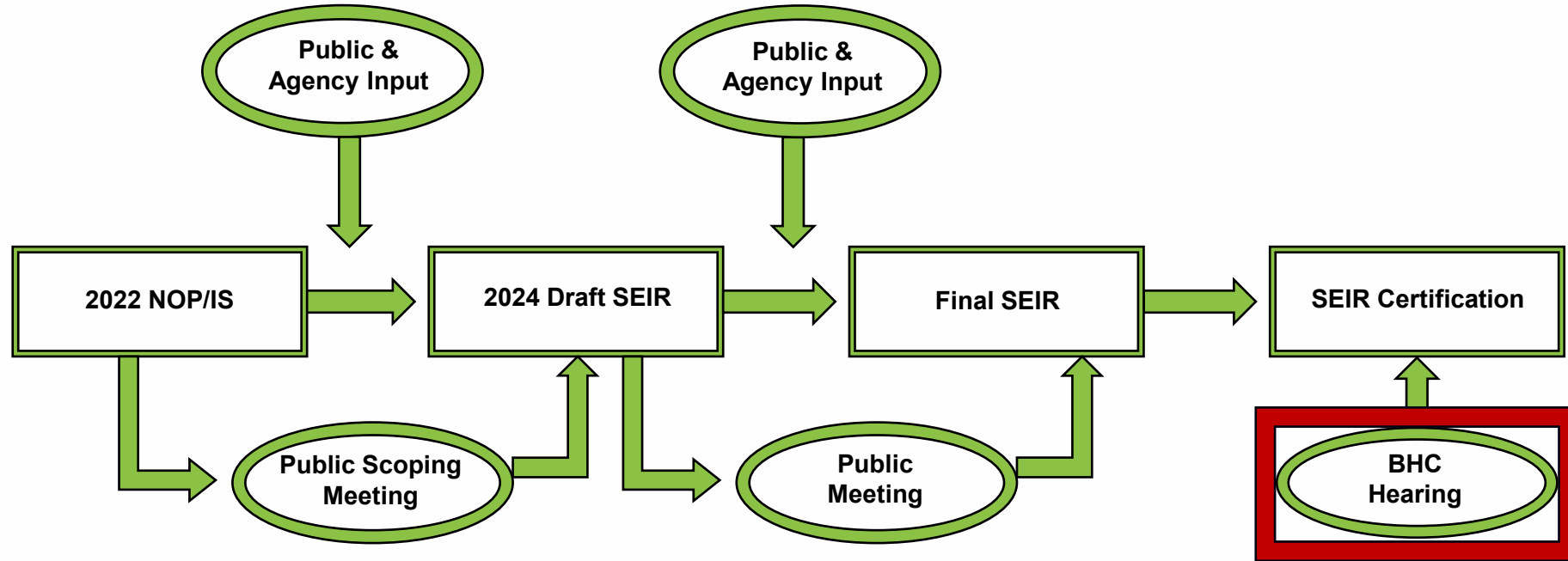
Board of Harbor
Commissioners

June 26, 2025

PROPOSED PROJECT BACKGROUND

- Final Environmental Impact Statement (EIS)/Environmental Impact Report (EIR) for the San Pedro Waterfront (SPW) Project (2009)
- 2016 Addendum to the 2009 SPW EIS/EIR for the SPPM Project (2016 SPPM Addendum)
- 2019 Addendum to the 2009 SPW EIS/EIR for the SPPM Project (2019 SPPM Addendum)

CEQA PROCESS

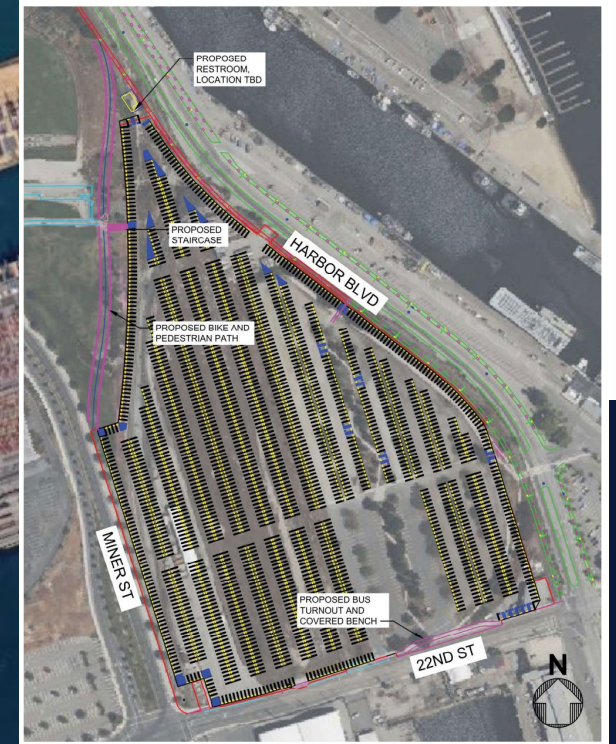


NOP/IS – Notice of Preparation/Initial Study

SEIR – Subsequent Environmental Impact Report

BHC – Board of Harbor Commissioners

PROJECT LOCATION

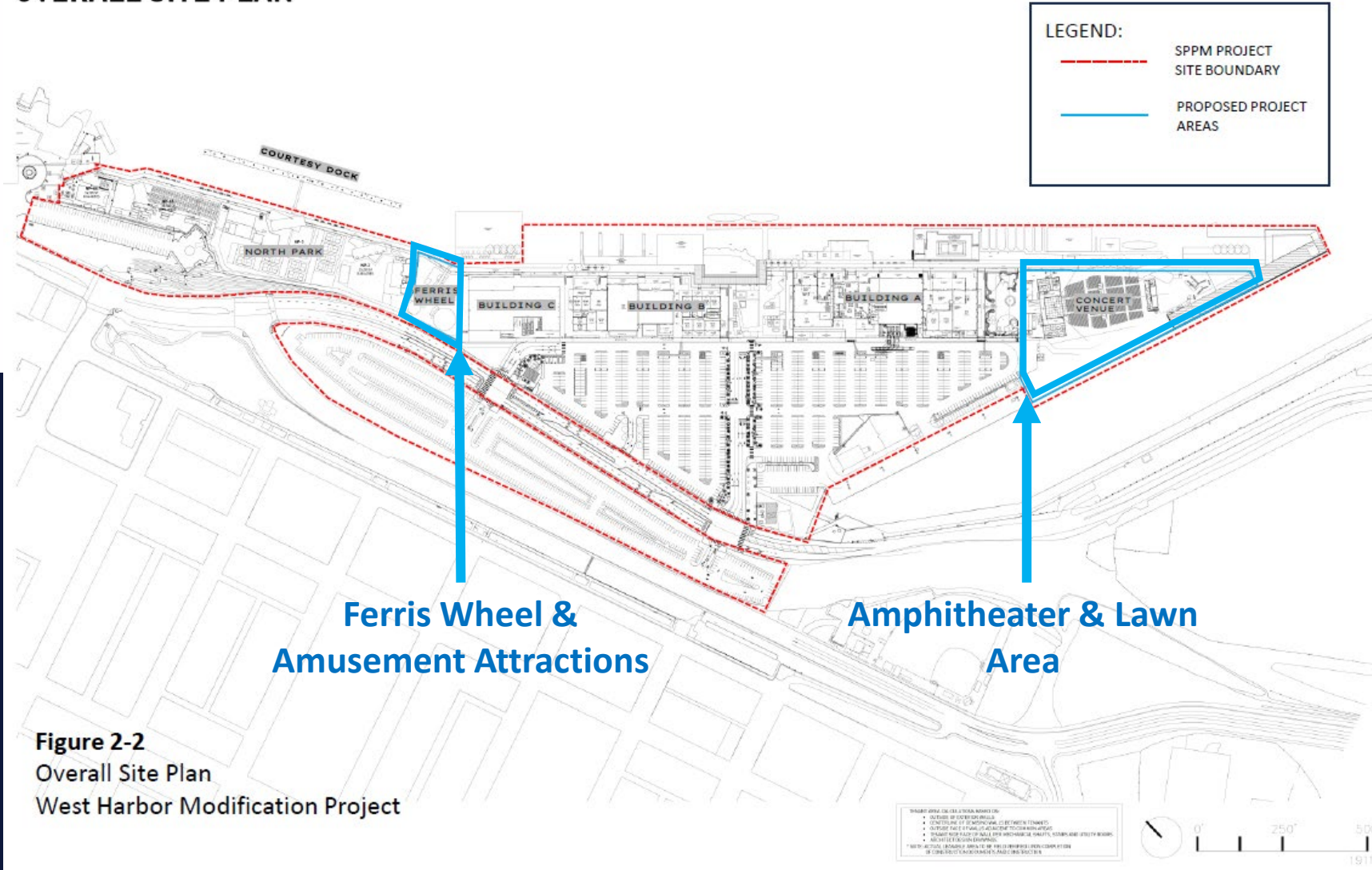


PROPOSED PROJECT ELEMENTS



PROPOSED PROJECT ELEMENTS

OVERALL SITE PLAN



Document
Release

Nov. 6, 2024

Public
Hearing

Nov. 14, 2024

Review
Period Close

Jan. 10, 2025

SUMMARY OF PUBLIC COMMENTS

- 232 comment letters
 - 174 in support
- 23 verbal comments
- Areas of environmental concern:
 - Noise impacts from Concerts and Fireworks
 - Air Quality impacts from Fireworks
 - Traffic Congestion during events
 - Impacts to local biological resources
 - Impacts from Artificial Turf

ENVIRONMENTAL ISSUES IN THE DRAFT SEIR

Significant and Unavoidable Impacts

- Air Quality
- Biological Resources
- Greenhouse Gas Emissions
- **Noise**
- **Transportation**

Less-than-Significant Impacts

- Aesthetics
- Cultural Resources*
- Hazards and Hazardous Materials*
- Public Services*
- Tribal Cultural Resources*

The **green** impacts represent new significant impacts * Indicates impact determination with mitigation incorporated

NOISE – SIGNIFICANT AND UNAVOIDABLE

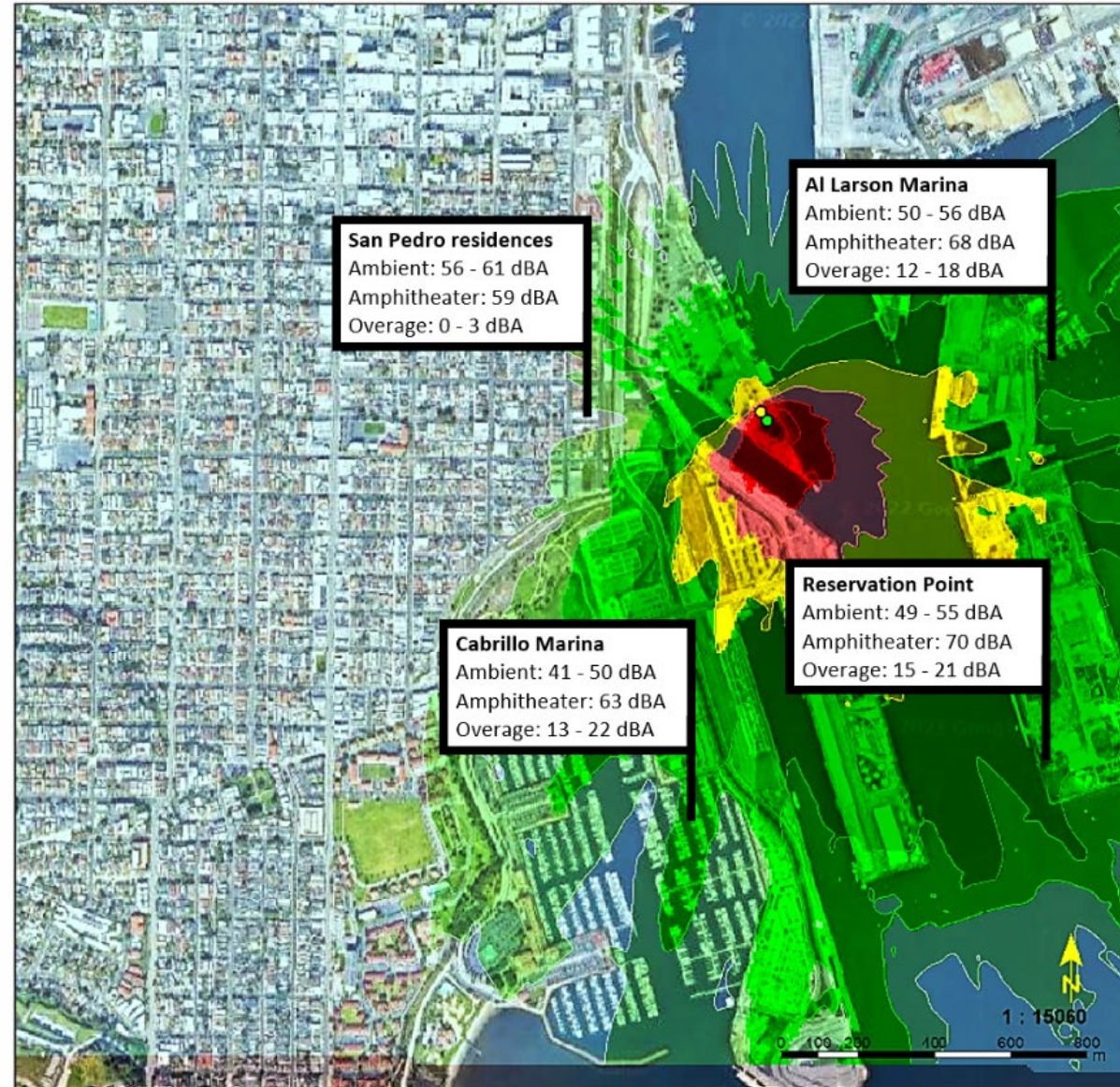


San Pedro Amphitheater
 Spectrum: Live bands
 SPL at reference point: 100.0 dB(A)

**UNFAVORABLE
 WEATHER
 CONDITIONS**

Signs and symbols	Levels in dB(A)
● Stage origin	> 110
● Reference point	104 - 110
	98 - 104
	92 - 98
	86 - 92
Syst Config. 3	80 - 86
Front: ~100 dBA	74 - 80
FOH: ~100 dBA	68 - 74
Back: ~96 dBA	62 - 68
Array Tilt	56 - 62
Lower Max SPL	< 56
Moderate Processing	
Unfavorable Weather	
Wind towards homes	
Temp. rise with elev.	
Elevation: 5.5ft	

NOISE – SIGNIFICANT AND UNAVOIDABLE



San Pedro Amphitheater
 Spectrum: Live bands
 SPL at reference point: 100.0 dB(A)

**FAVORABLE
 WEATHER
 CONDITIONS**

Signs and symbols	Levels in dB(A)
● Stage origin	> 110
● Reference point	104 - 110
	98 - 104
	92 - 98
	86 - 92
	80 - 86
	74 - 80
	68 - 74
	62 - 68
	56 - 62
	< 56

Syst Config. 3
 Front: ~100 dBA
 FOH: ~100 dBA
 Back: ~96 dBA
 Array Tilt
 Lower Max SPL
 Moderate Processing

Favorable Weather
 Wind away from homes
 Temp. drop with elev.

Elevation: 5.5ft

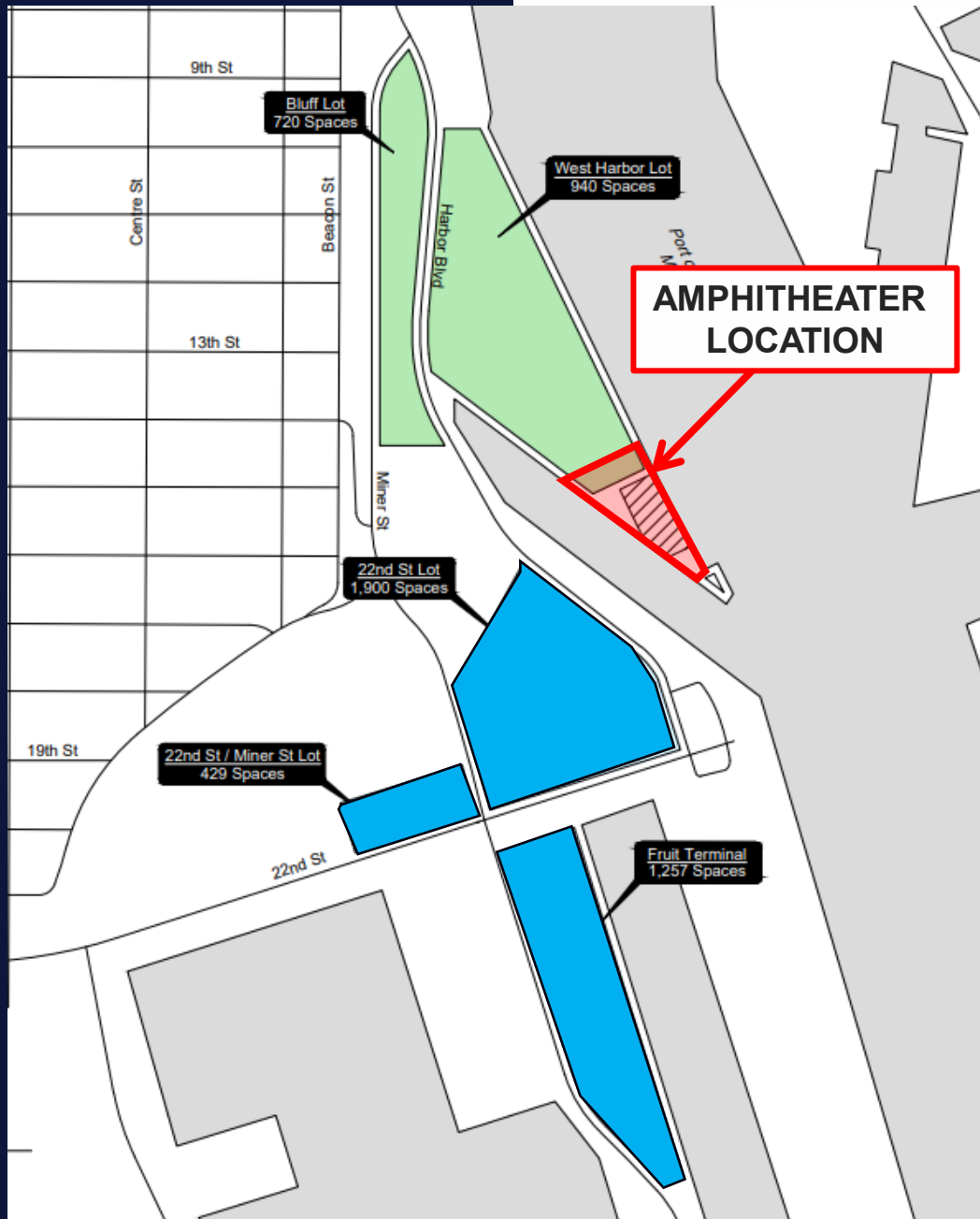
TRANSPORTATION – *SIGNIFICANT AND UNAVOIDABLE*

Analysis considered:

- Event patron vehicle-miles traveled

MM-TRAN-1: Transportation Demand Management (TDM) Strategies

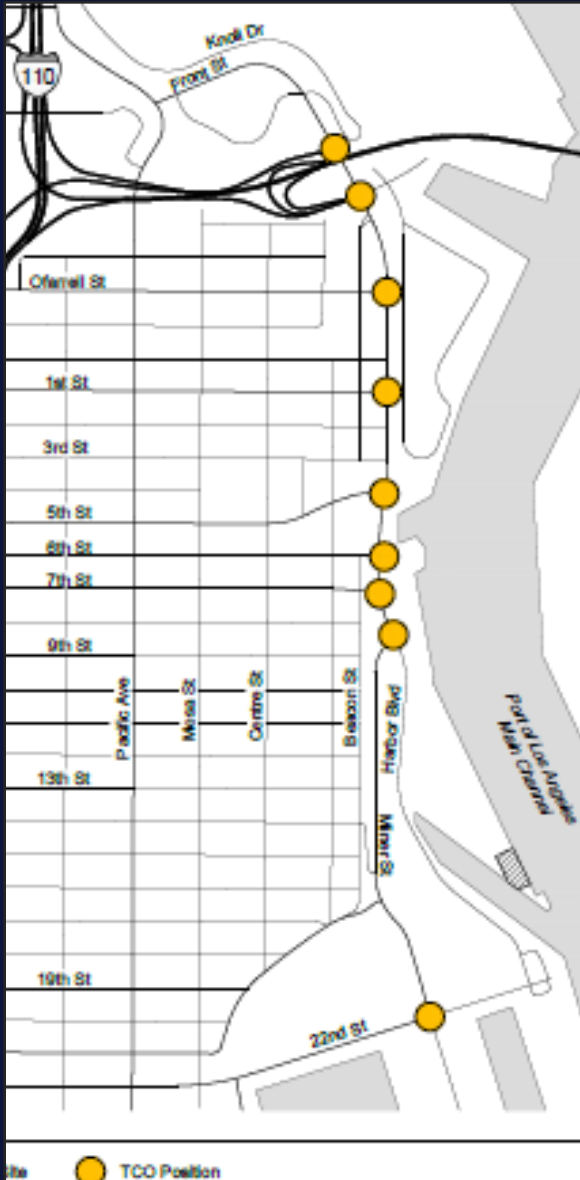
- Event-Specific
 - Expanded Public Transit
 - Education and Outreach
 - Ticket Packaging
 - Transportation Communication
 - Satellite Shuttle Service
- Carpooling
 - Patron Application Coordination
 - Employee Incentive Program
- Provide End-of-Trip Bicycle Facilities
- Traveler Information and Wayfinding
- Priority Parking Spaces for Electric and Clean Air Vehicles



PARKING PLAN

- **Parking**
 - Green lots - Premium
 - 1,660 spaces
 - Blue lots – General
 - 3,586 spaces
 - shuttle service available
- **Advance Parking Purchase**

TRAFFIC CONTROL MEASURES



Traffic Control Officers (TCO)

Pedestrian Control & Crossing Guards

- Key intersections for ped & vehicular safety

Portable Changeable Message Signs (CMS)

- Arterial & freeway; real-time info on traffic routing & parking

Potential POLA cameras (use by LADOT & Port Police)

Potential Harbor Bl. Temporary Lane Control (max. attendance events)

- SB (arrivals) - SR47 Ramps to 3rd St & NB (departures) - 7th St. to SR47
- Subject to LADOT approval

KEY RECOMMENDED ACTIONS

- Certify the Final Subsequent Environmental Impact Report to the San Pedro Waterfront Environmental Impact Report for the West Harbor Modification Project;
- Adopt the Findings of Fact and Statement of Overriding Considerations;
- Adopt the Mitigation Monitoring and Reporting Program; and
- Approve the Proposed Project including all feasible mitigation measures and project features.



A M E R I C A ' S P O R T ®

THANK YOU



portoflosangeles.org

@PortofLA

AIR QUALITY – SIGNIFICANT AND UNAVOIDABLE

Remains Significant and Unavoidable per the 2009 SPW EIR but this project does not exceed thresholds

The following mitigation will be applied:

- **MM-AQ-3:** Fleet Modernization for On-Road Trucks During Construction
- **MM-AQ-4:** Fleet Modernization for Construction Equipment
- **MM-AQ-5:** Fugitive Dust
- **MM-AQ-6:** Best Management Practices (BMPs)
- **MM-AQ-7:** General Mitigation Measures During Construction
- **MM-AQ-8:** Special Precautions Near Sensitive Sites
- **MM-AQ-31:** Zero-Emission Shuttle Buses

BIOLOGICAL RESOURCES – *SIGNIFICANT AND UNAVOIDABLE*

Analysis considered:

- Marine mammals and birds – noise and light tolerance
- Potential for trash and debris entering water

The following mitigation will be applied:

- **PF-BIO-1:** Compliance with Local Regulations
- **MM-BIO-7:** Trash Management and Post-Event Cleanup
- **MM-BIO-8:** Marine Mammal Monitoring During Firework Events
- **MM-BIO-9:** California Least Tern Nesting Colony Monitoring During Firework Events
- **MM-BIO-10:** Biodegradable Venue Products

NOISE – *SIGNIFICANT AND UNAVOIDABLE*

Analysis considered:

- Amphitheater operations and fireworks

These impacts will be reduced by Project Feature NOI-1 and Mitigation Measures 1-14.

- Baseline ambient noise levels were recorded for comparison
- Noise modeling performed for favorable and unfavorable conditions, with and without mitigation applied
- Impacts will affect residential areas at Reservation Point, Al Larson Marina, and Cabrillo Marina.

NOISE – *MITIGATION MEASURES*

- **PF-NOI-1:** Incorporate Sound-Focusing Design into the Amphitheater Sound System
- **MM-NOI-1:** Construct temporary noise barriers, muffle and maintain construction equipment, prohibit idling, locate equipment, use quiet construction equipment, and notify residents
- **MM-NOI-2:** Construction Hours
- **MM-NOI-3:** Limit Noise Levels within the Amphitheater during all Tier 1 Events
- **MM-NOI-4:** Require all Tier 1 Events to Utilize the House Public Address/Sound Reinforcement System
- **MM-NOI-5:** Monitor Amphitheater Noise for all Tier 1 Events
- **MM-NOI-6:** Noise Reporting Requirements Following Amphitheater Events
- **MM-NOI-7:** Establish a Noise-Complaint Hotline and/or Website
- **MM-NOI-8:** Enforce a Curfew and Restrict the Hours of Use and Duration for the Amphitheater’s Amplified Sound System
- **MM-NOI-9:** Fines for Non-Compliance
- **MM-NOI-10:** Restrict the Total Number of Tier 1 Event Performance Days to 100 per Year
- **MM-NOI-11:** Restrict the Total Number of Firework Displays to 13 per Year
- **MM-NOI-12:** Limit the Duration of All Firework Displays
- **MM-NOI-13:** Eliminate the Use of “Salute” Fireworks
- **MM-NOI-14:** Replace Fireworks Displays with Drone Displays