

# E.1

## EXISTING MARINE RESOURCE CONDITION ALONG WATERFRONT AND FUTURE PROMENADE

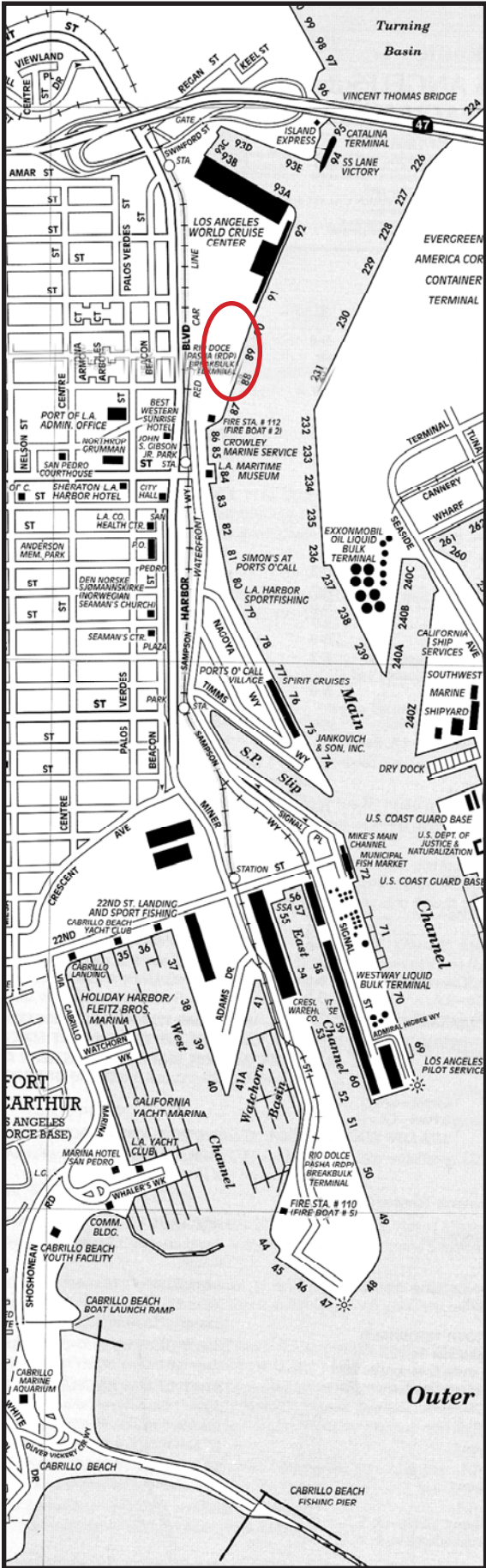


# **San Pedro Waterfront**

## **Existing Marine Resource Condition Along Waterfront and Future Promenade**



# San Pedro Waterfront - Berth 87-90 - North Harbor Cut



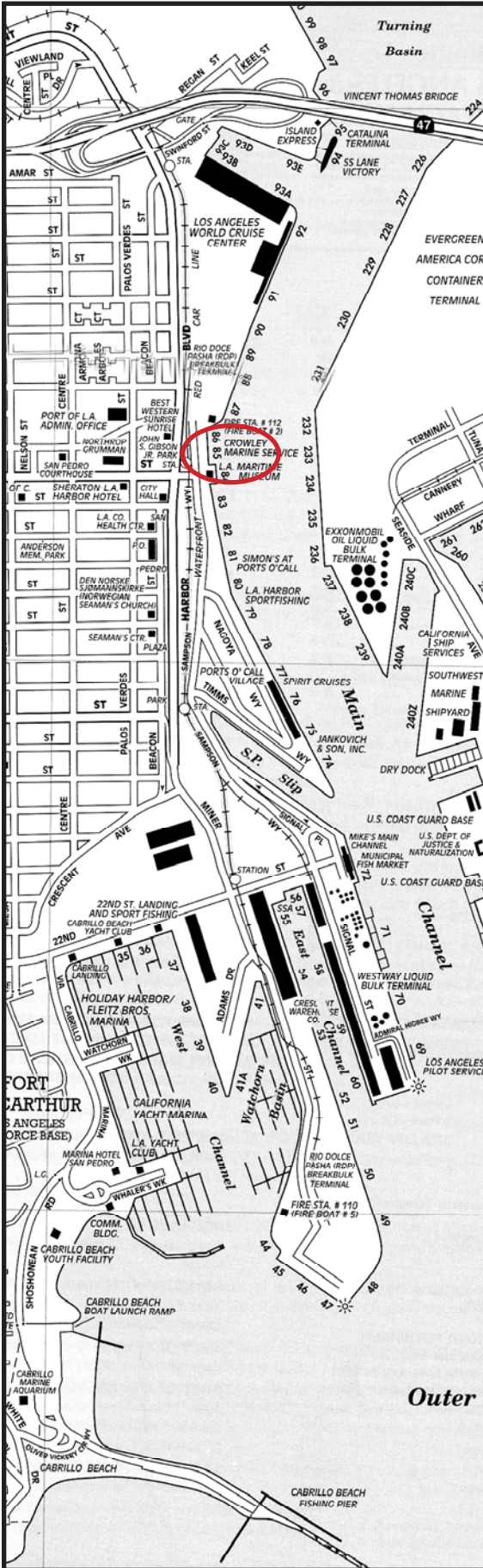


# San Pedro Waterfront - Ports O' Call





# San Pedro Waterfront - Berth 84-86 - Crowley/Maritime Museum



Sargassum

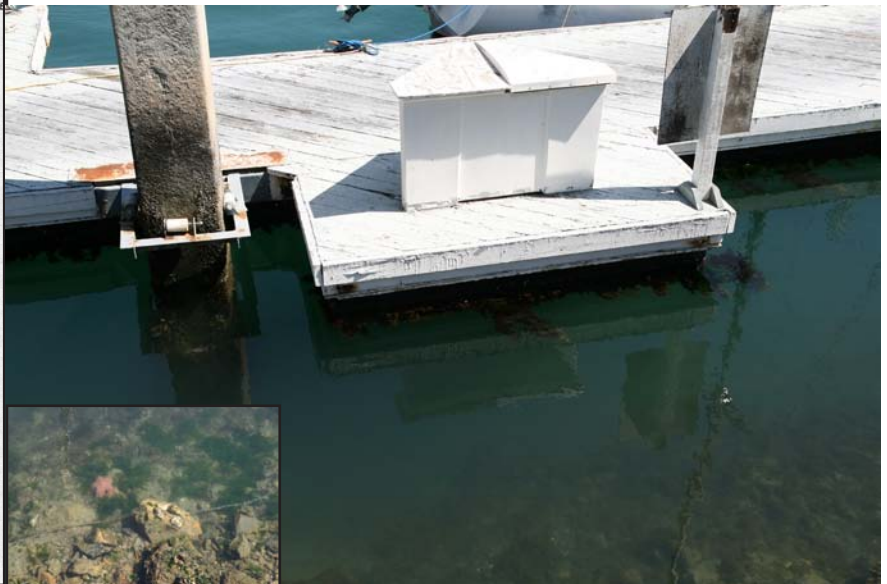
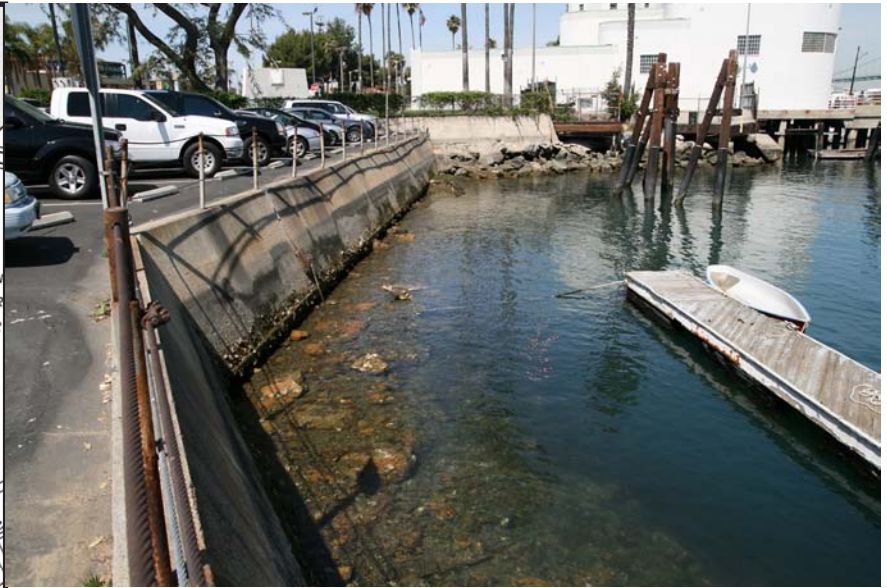
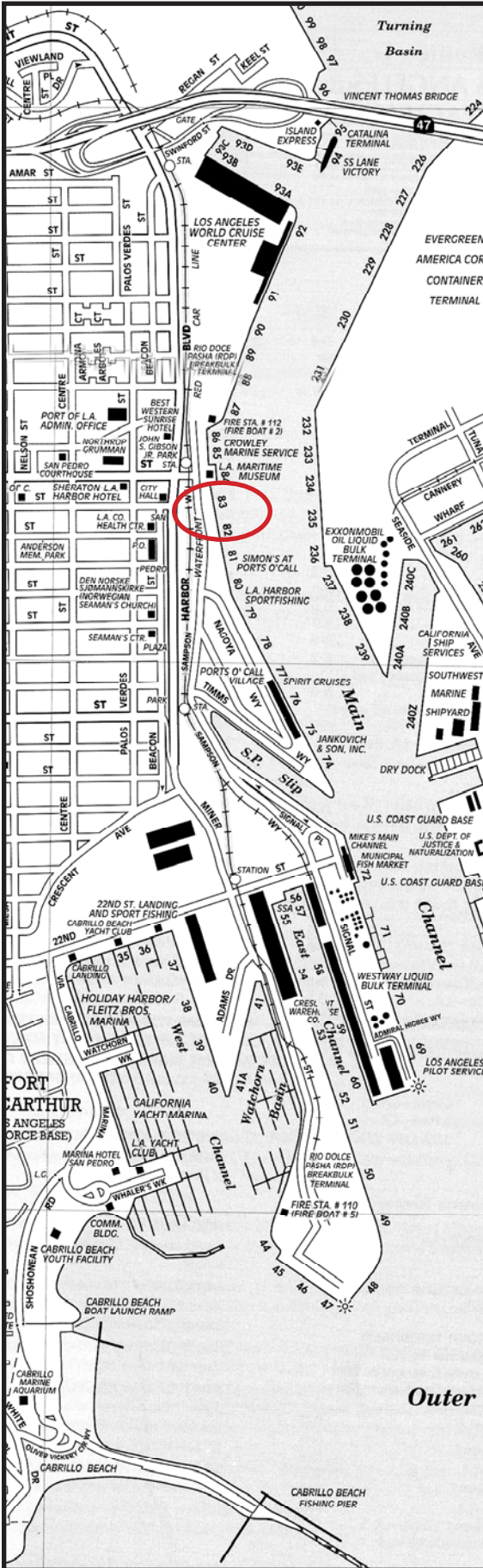


Maritime Museum

Outer



# San Pedro Waterfront - Berth 83-81 - Acapulco/Simons





# San Pedro Waterfront - Berth 81-77 - POC



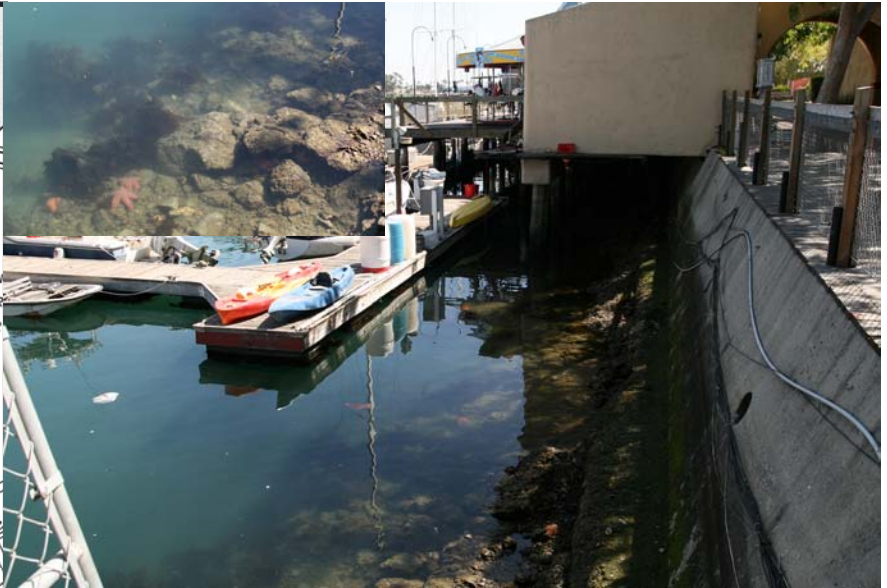
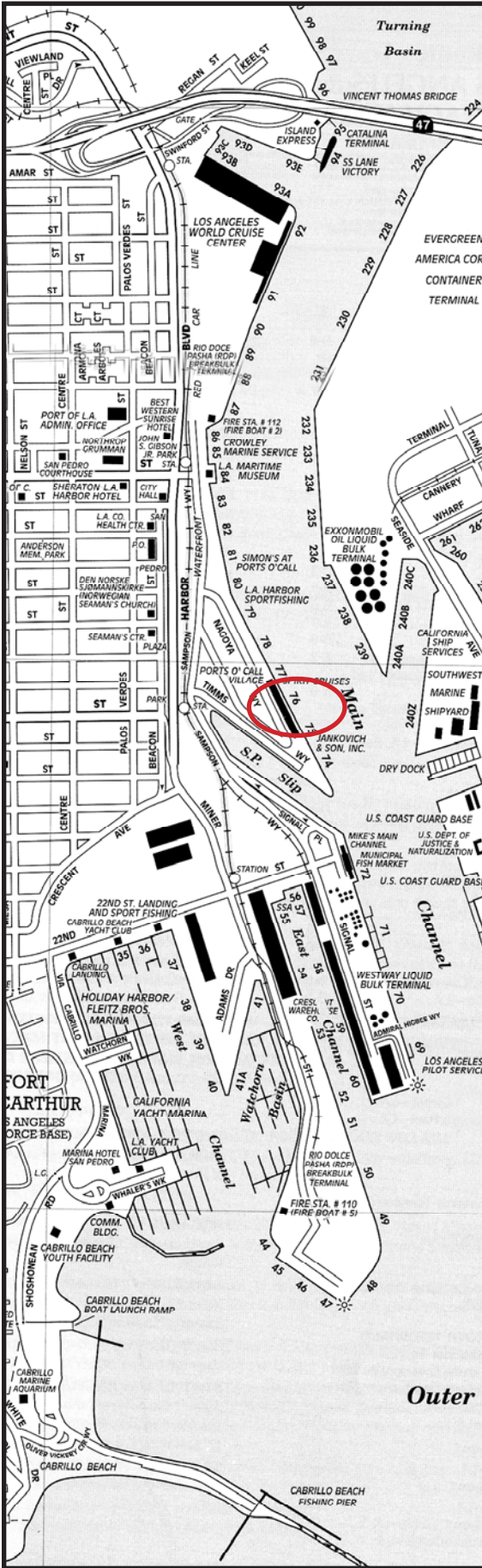


# San Pedro Waterfront - Berth 78 - Mudflat Area





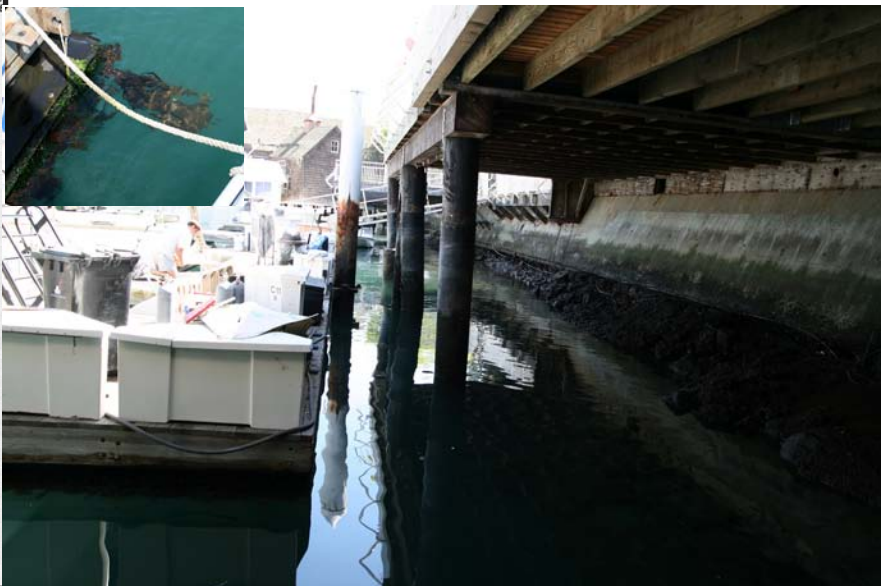
# San Pedro Waterfront - Berth 77-76 - POC



Outer

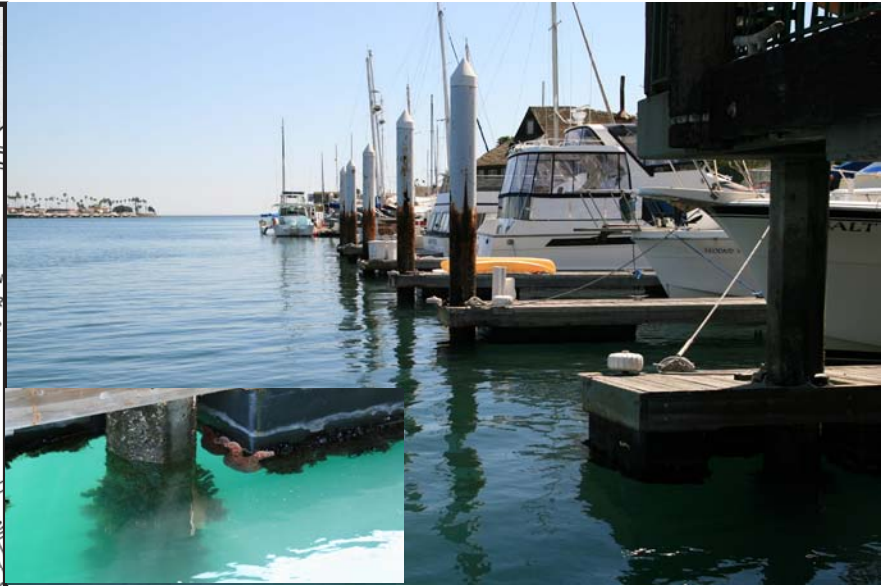


# San Pedro Waterfront - Berth 76 - Ports O Call Restaurant





# San Pedro Waterfront - Berth 75-74 - POC & Jankoich



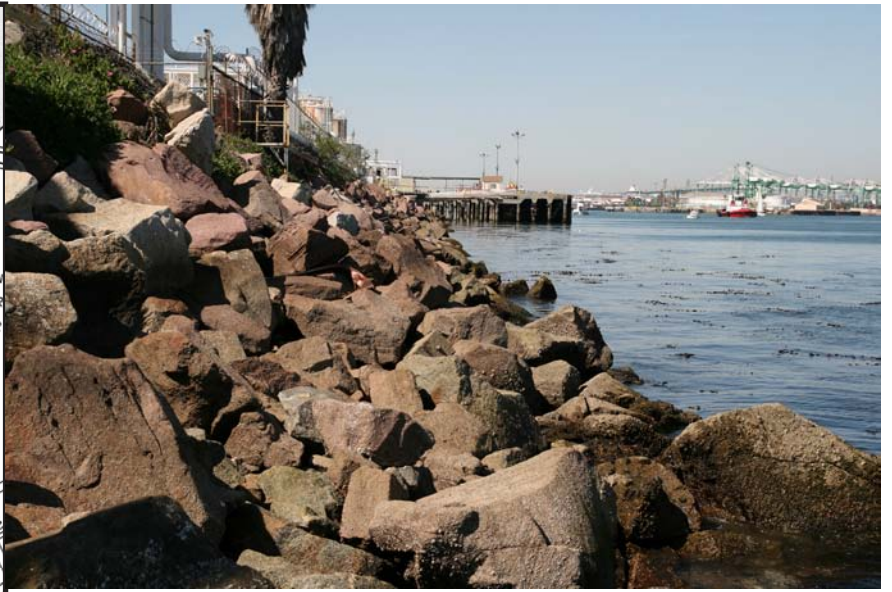
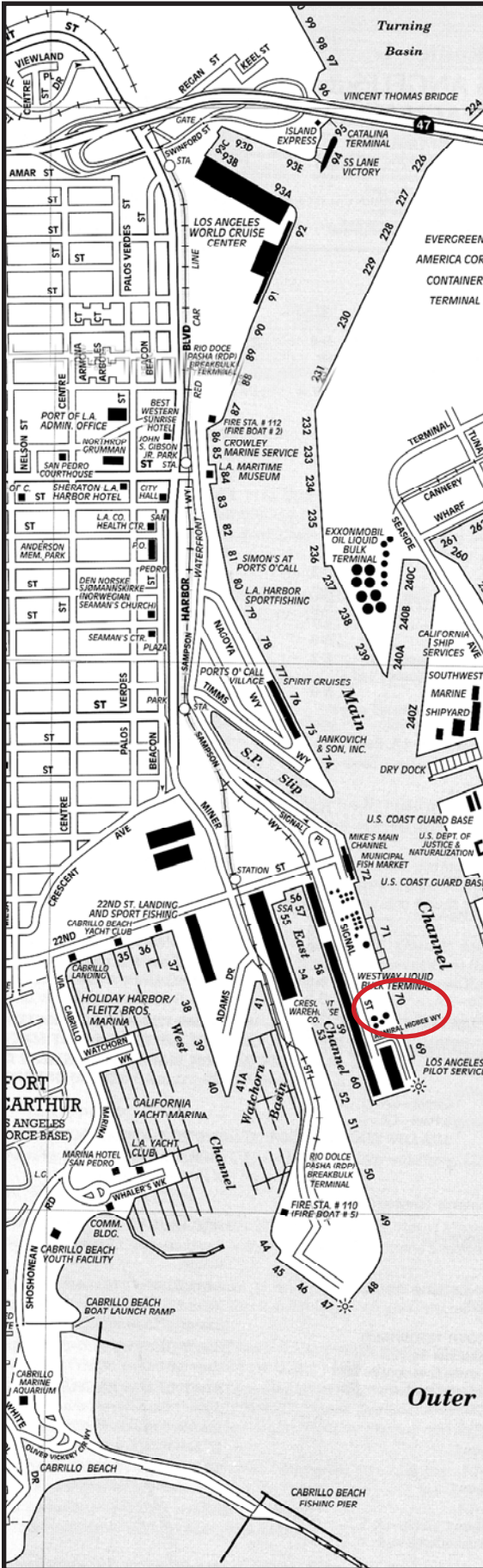


# San Pedro Waterfront - SP Slip



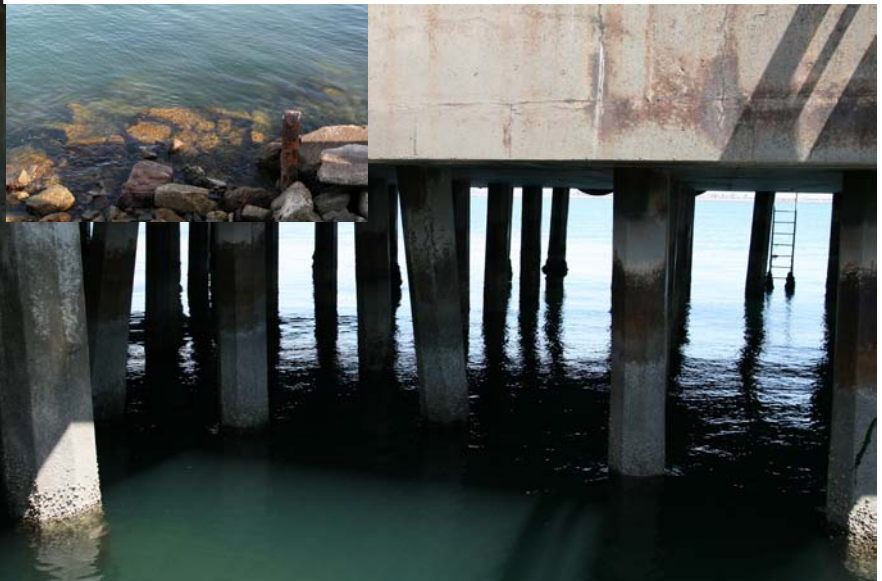
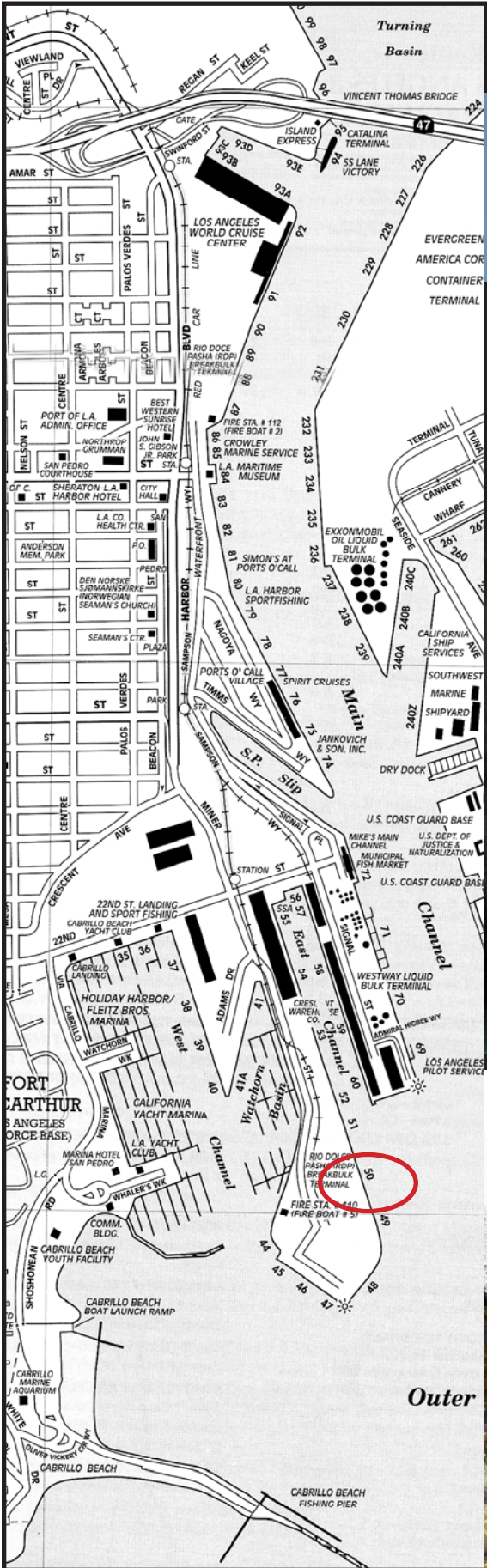


# San Pedro Waterfront - Berth 71-69 - Westways/Pilot Station



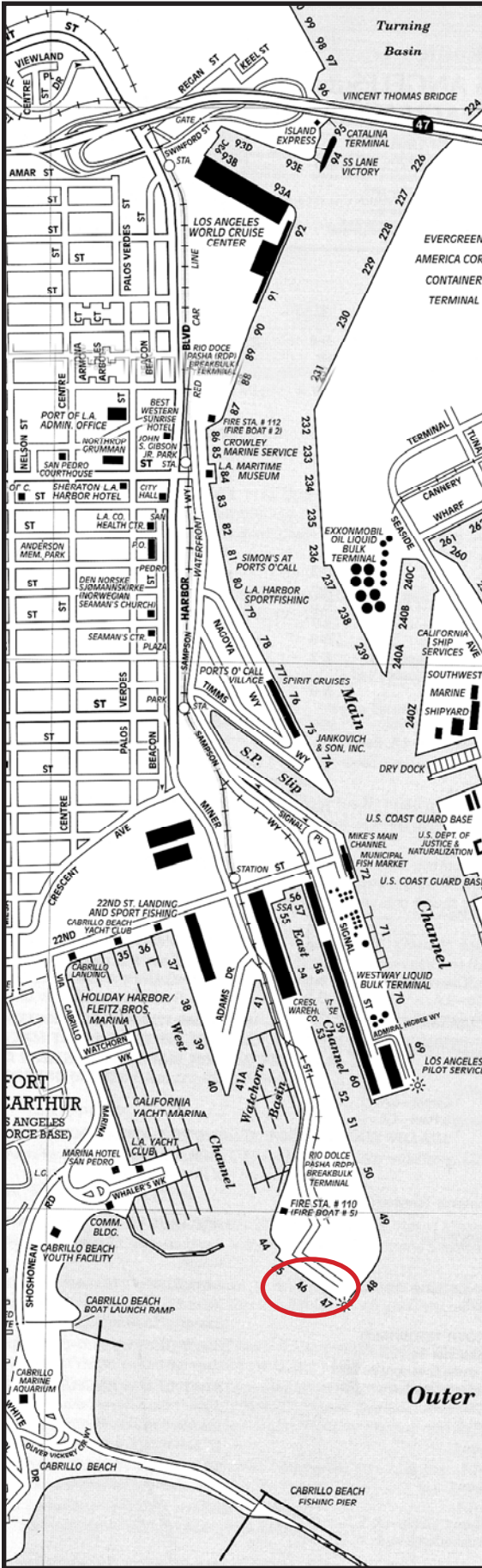


# San Pedro Waterfront - Berth 49-52 - Outer Harbor Cruise Terminal



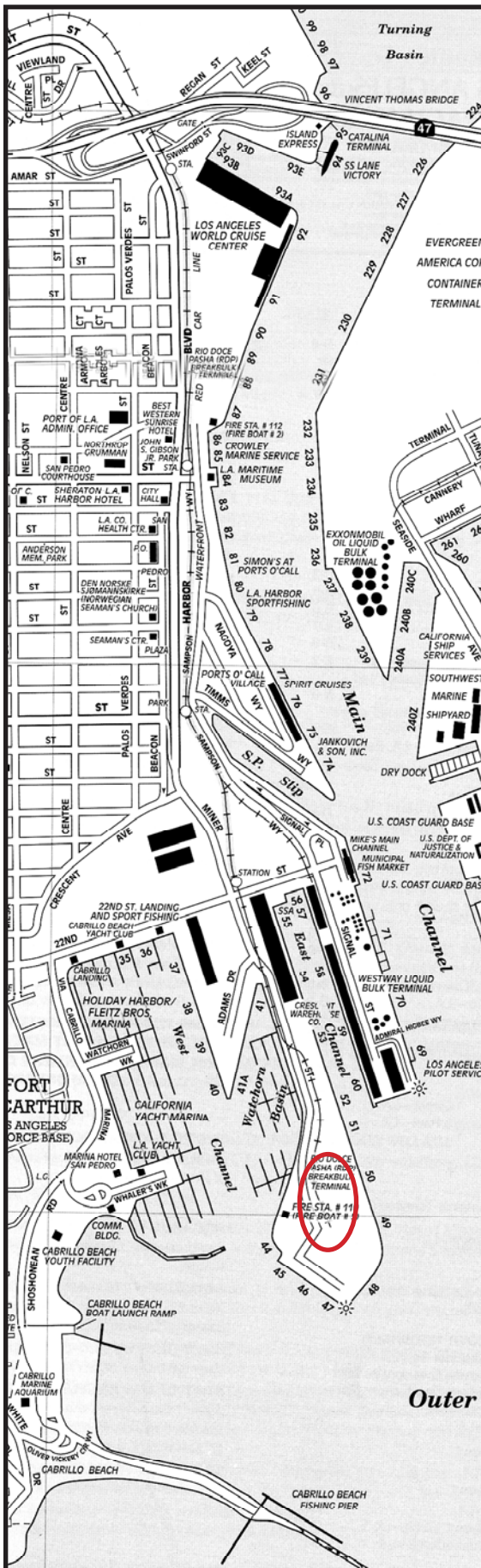


# San Pedro Waterfront - Berth 44-47 - Outer Harbor Cruise Terminal





# San Pedro Waterfront - Rear Berth 52-49 - Outer Harbor Cruise Terminal



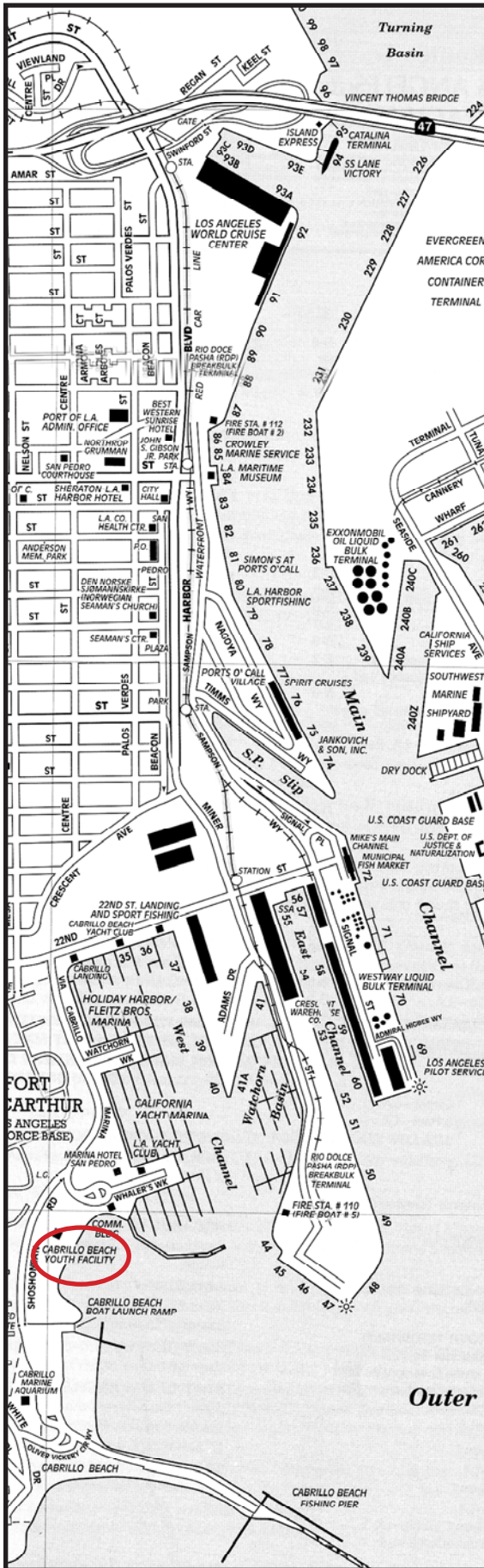


# San Pedro Waterfront - 22nd Street Area



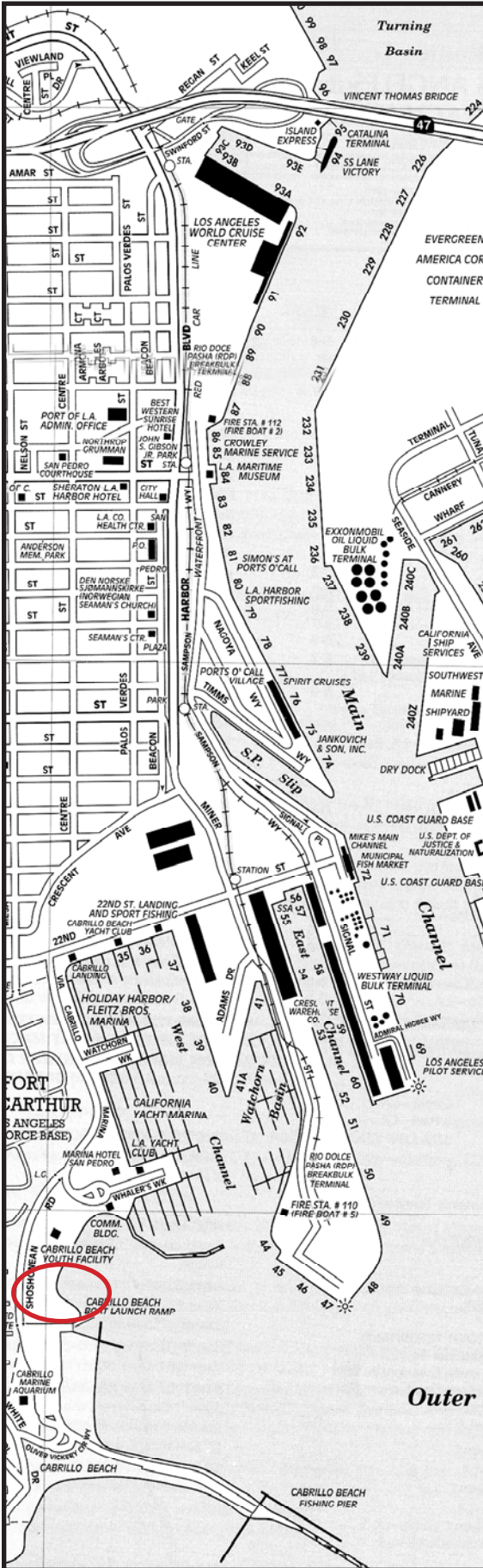


# San Pedro Waterfront - Youth/Scout Facility & Salt Marsh





# San Pedro Waterfront - Salt Marsh



Shoshonean Rd.

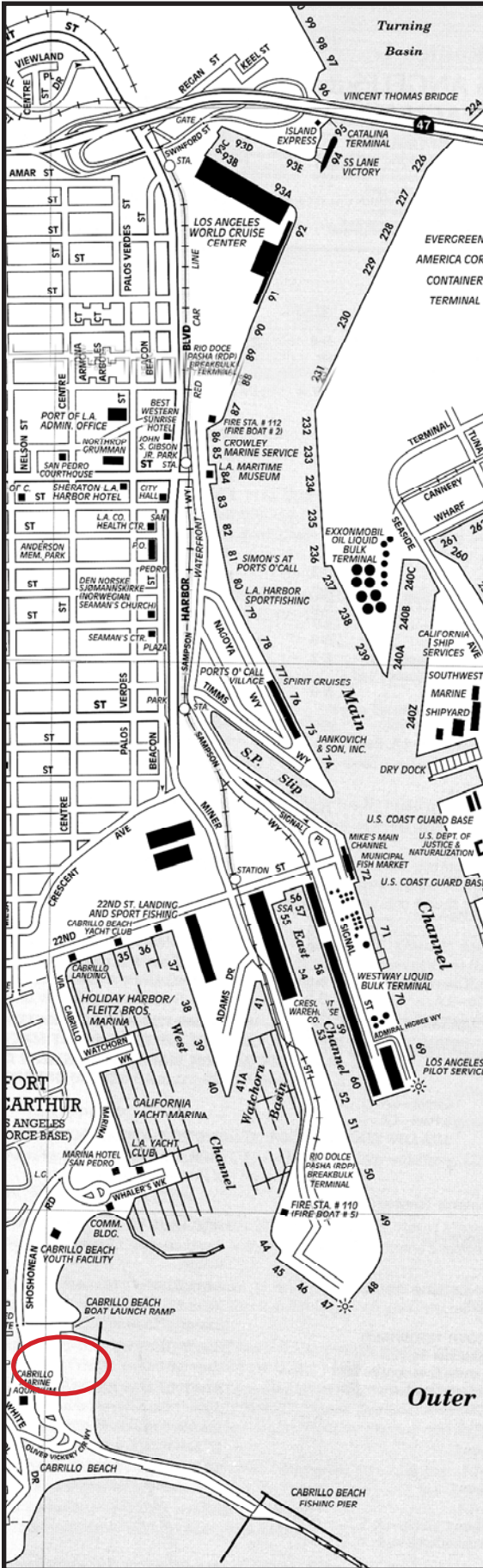


Cord Grass

Outer



# San Pedro Waterfront - Cabrillo Beach





# San Pedro Waterfront - Macroalga

