

Port of Los Angeles – Tariff No. 4 2023 General Rate Increase

Eric Caris, Director of Marketing

July 20, 2023

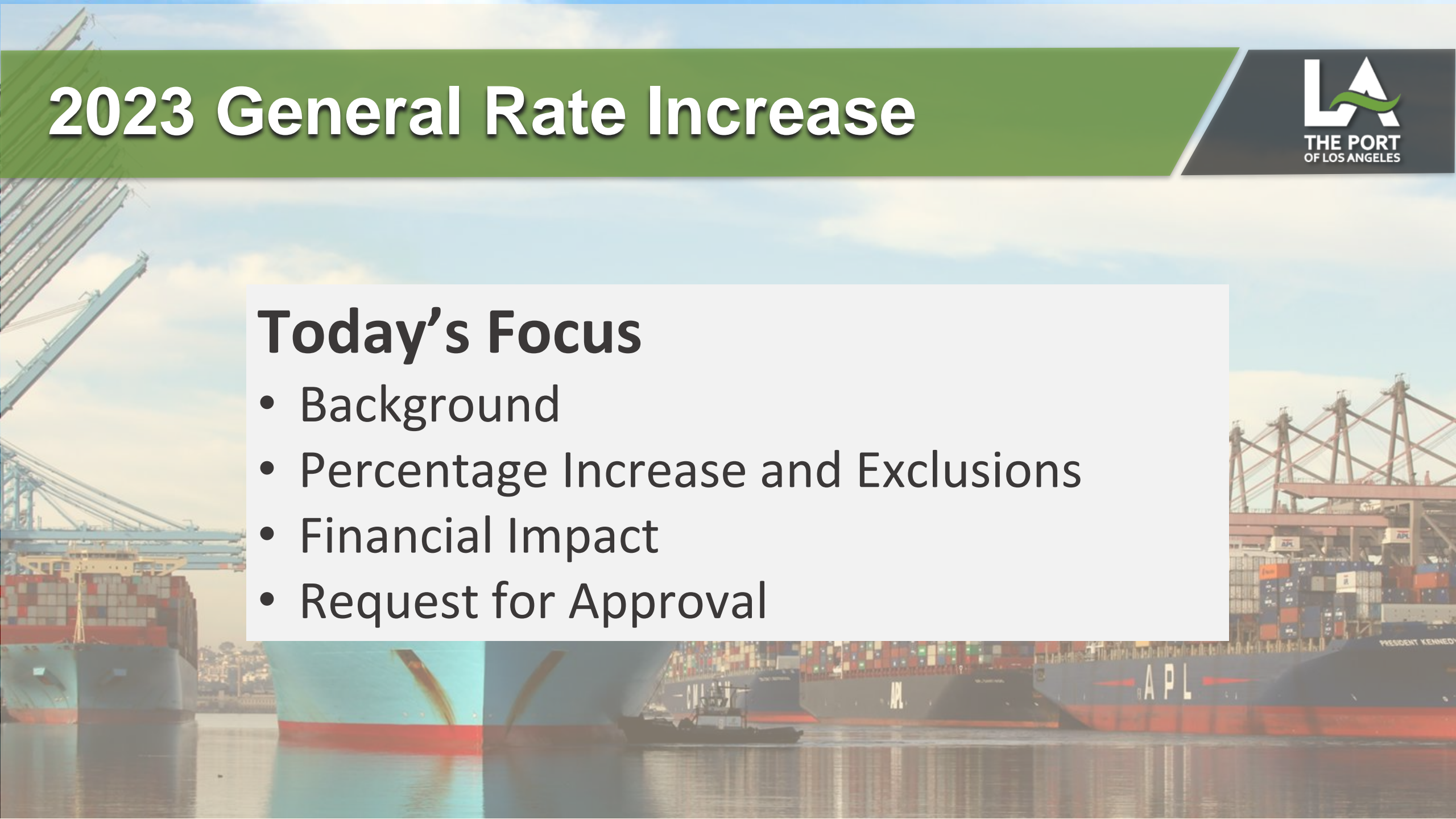


2023 General Rate Increase



Today's Focus

- Background
- Percentage Increase and Exclusions
- Financial Impact
- Request for Approval



Background

- Port of Los Angeles Tariff No. 4 describes the rates, charges, rules and regulations of the Port of Los Angeles
- Rated tariff items are periodically reviewed and amended pending market conditions and/or to keep up with inflation
- The last General Rate Increase (GRI): August 1, 2022 (~7.04%)
- Prior to the 2022 GRI no GRI took place since 2005
- Method – The California Ports Authority (CAPA) provides guidance using the year-over-year change in the Western Region CPI-U as of December

Percentage Increase & Exclusions

- 6.2 percent GRI effective September 1, 2023, except the following tariff items:
 - Pilotage
 - Cruise Passenger & AMP Fees
 - Cruise Emergency Lay-up rate schedule
 - Space Assignments
 - Parking Charges
 - Clean Air Action Plan Clean Truck Program fees
 - Incentives Programs
- Exempted items will be amended separately from the GRI process.

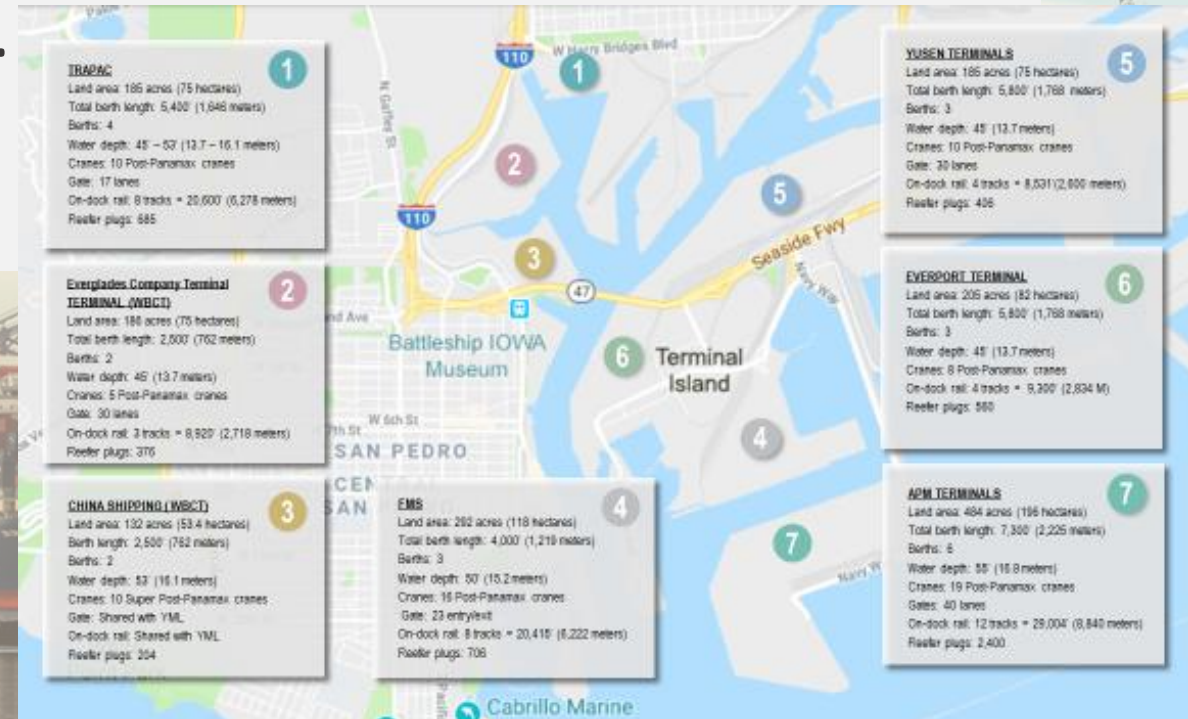
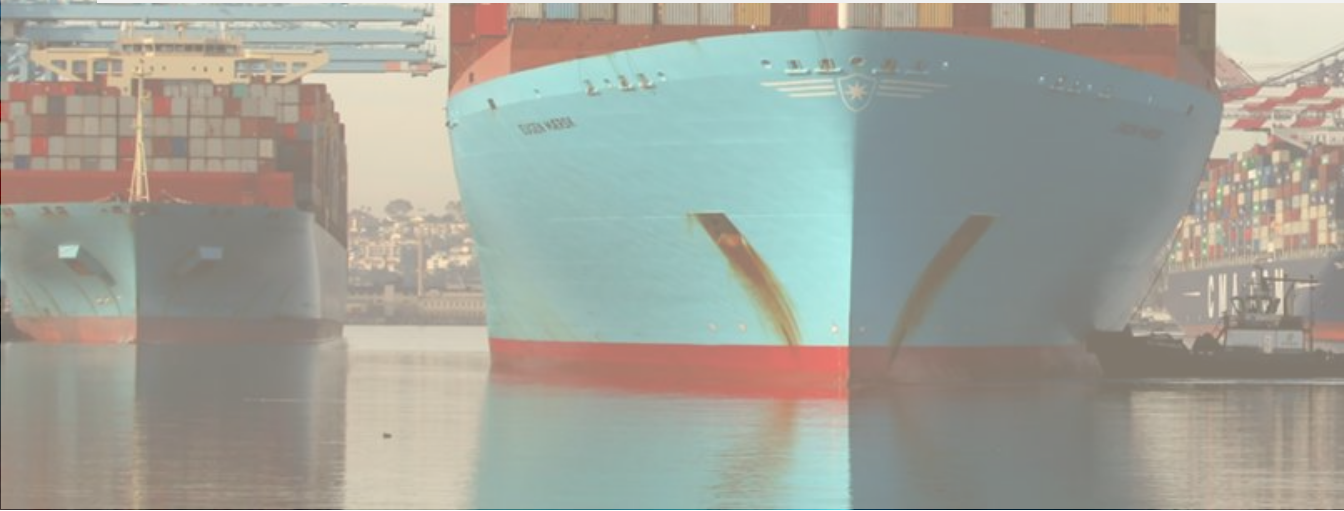
Percentage Increase & Exclusions

(Continued)



Container Terminals affected by the 6.2% increase:

- APM Terminals Pacific, LTD
- China Shipping Holding Company, LTD
- Everglades Company Terminal, Inc.
- Everport Terminal Services, Inc.
- Yusen Terminals, Inc.



Financial Impact

Summary of \$ Increase	Sep 1 - Dec 2023	For Calendar Year 2024	Total
Container Terminals – incur 90% of increase	\$2,355,795	\$10,787,412	\$13,143,207
Non-Container Terminals	\$285,943	\$883,889	\$1,169,832
Total	\$2,641,738	\$11,671,301	\$14,313,039

Sep – Dec 2023 = average approximately .27 per TEU
Calendar Year 2024 = average approximately \$1.19 per TEU

Request for Approval



- Request Approval of a 6.2 % General Rate Increase effective September 1, 2023

PORT OF LOS ANGELES – TARIFF NO. 4

Original Title Page

BOARD OF HARBOR COMMISSIONERS
CITY OF LOS ANGELES
PORT OF LOS ANGELES
TARIFF NO. 4

NAMING
RATES, CHARGES, RULES AND REGULATIONS
AT
LOS ANGELES HARBOR
FOR
Pilotage, Dockage, Wharfage, Passengers, Free Time,
Wharf Demurrage, Wharf Storage,
Space Assignments, Cranes,
And other operational rules and regulations

Order No. 5837 Ordinance No. 165789	Adopted July 12, 1989 Adopted April 10, 1990	EFFECTIVE: July 1, 1990
----------------------------------------	-------------------------------------------------	-------------------------

THANK YOU

@PortofLA



portoflosangeles.org



THE PORT
OF LOS ANGELES