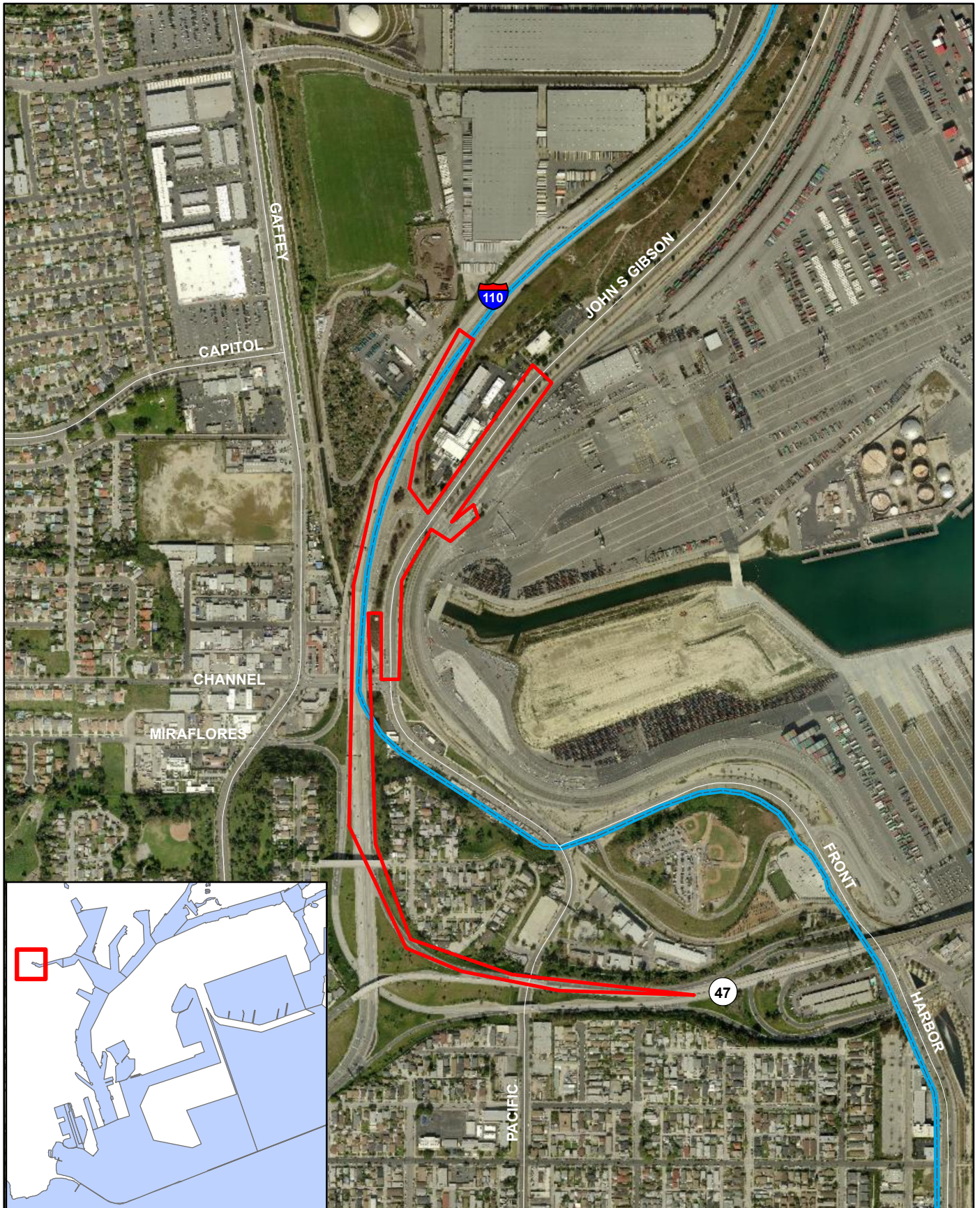


CDP No. 13-12 - JOHN S. GIBSON BOULEVARD SR-47/ I-110 CONNECTOR IMPROVEMENTS PROJECT



Transmittal 1

Legend:
— Project Area
— Coastal Zone

Scale: 0 190 380 760 1,140 Feet

**Harbor Department
Planning & Economic Development
Map Produced 9/2013**

**THE PORT
OF LOS ANGELES**