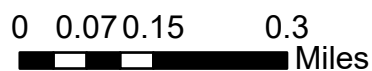


Revocable License # 2025-14



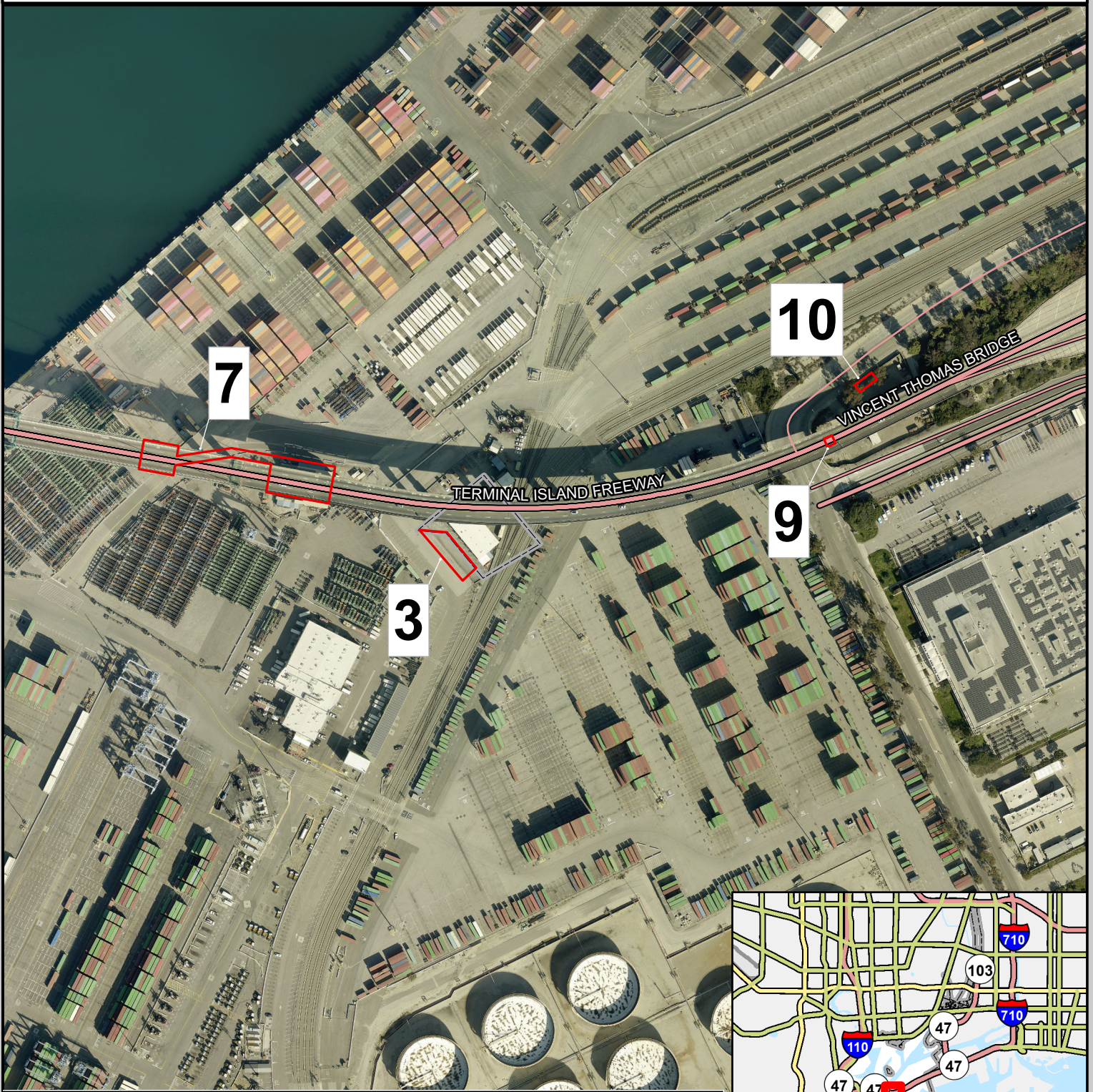
Transmittal 1



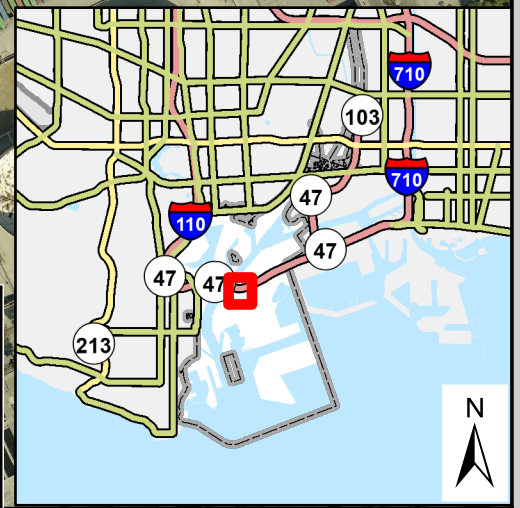
JULY 2025



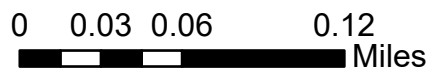
Revocable License # 2025-14 East Approach



Parcel Number	Square Feet	Use	Term
Parcel 3	5,520	Parking and access to elevator for construction personell	01/05/26 - 02/28/29
Parcel 7	21,968	Electrical work for seismic sensors	07/08/27 - 03/01/28
Parcel 9	400	Stair tower (East approach) for Caltrans' construction personnel to access bridge.	01/05/26 - 02/28/29
Parcel 10	960	Four parking spaces for access to the stair tower	01/05/26 - 02/28/29



Transmittal 1

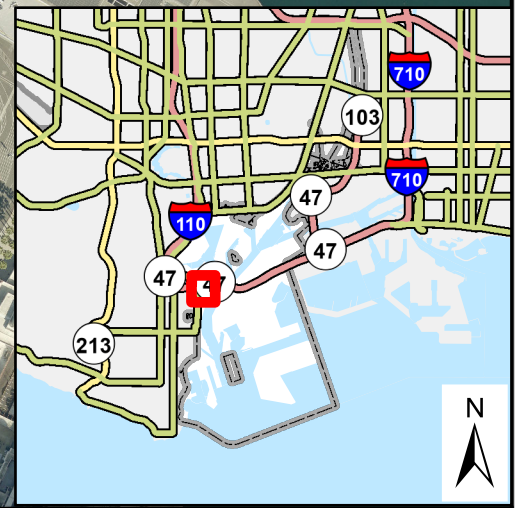


Site Map

JULY 2025

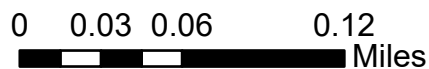


Revocable License # 2025-14 West Approach



Parcel Number	Square Feet	Use	Term
Parcel 1	7,676	Elevator for access to bridge and parking	01/05/26 - 02/28/29
Parcel 2	3,911	Crane and material deliveries for installation/removal of elevator	Install: 2 weeks between late January 2026 and February 2026 Remove: 2 weeks between January 2029 and late February 2029
Parcel 4	10,141	500-ton crane for access and material deliveries	07/08/27 - 03/01/28
Parcel 6	39,136	Electrical work for seismic sensors	02/01/28 - 04/30/28
Parcel 5	9,249	500-ton crane for access and material deliveries	01/05/27 - 07/30/27
Parcel 8	1,360	Stair tower (west approach) for Caltrans' construction personnel to access bridge and 4 parking spaces.	01/05/26 - 02/28/29

Transmittal 1



Site Map

JULY 2025

