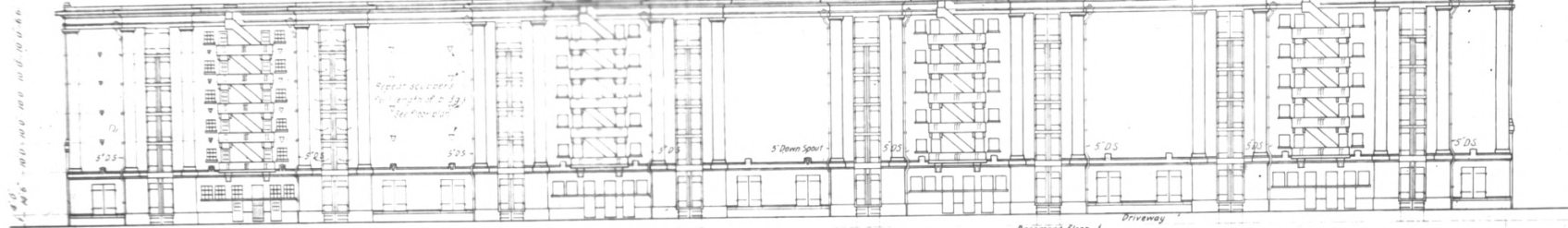
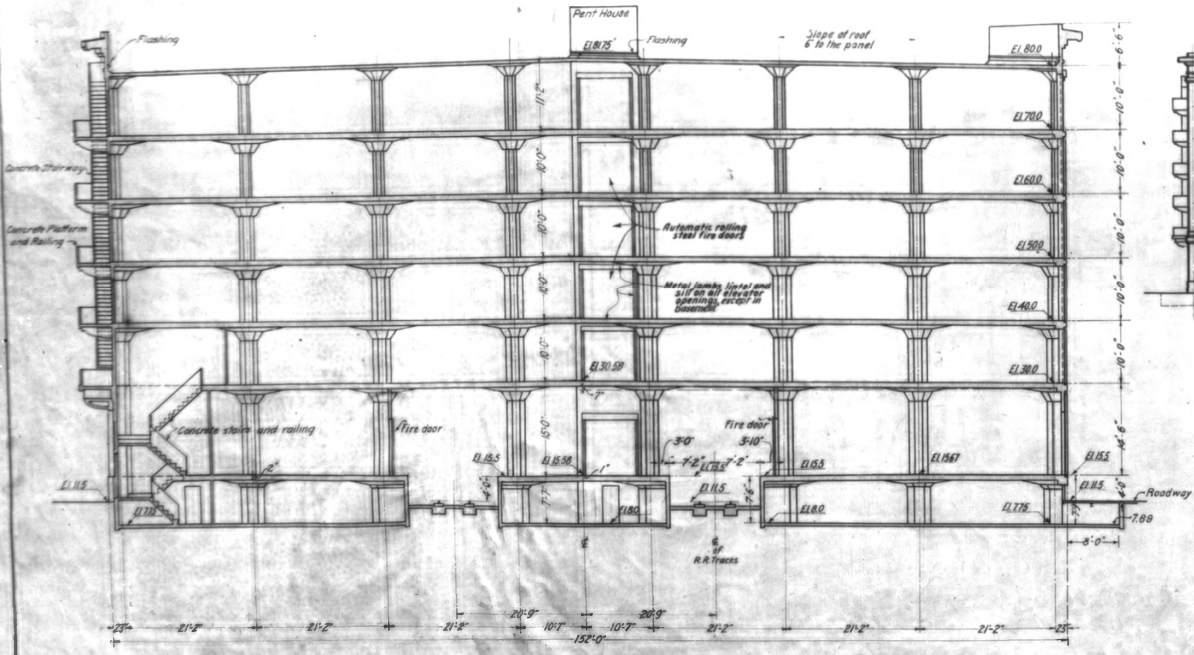


451 3-1916

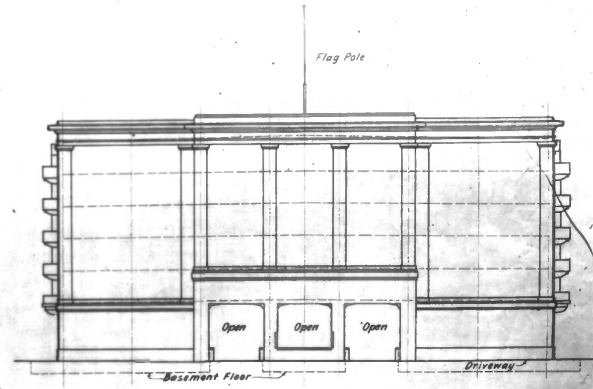
CITY OF LOS ANGELES
HARBOR DEPARTMENT
WAREHOUSE NO. 1 MUNICIPAL DOCK NO. 1



480'-0"
WEST SIDE ELEVATION
 Scale 1/8"=1'-0"
 East Side Elevation opposite hand



TRANSVERSE SECTION A-A
 Scale 1/8"=1'-0"



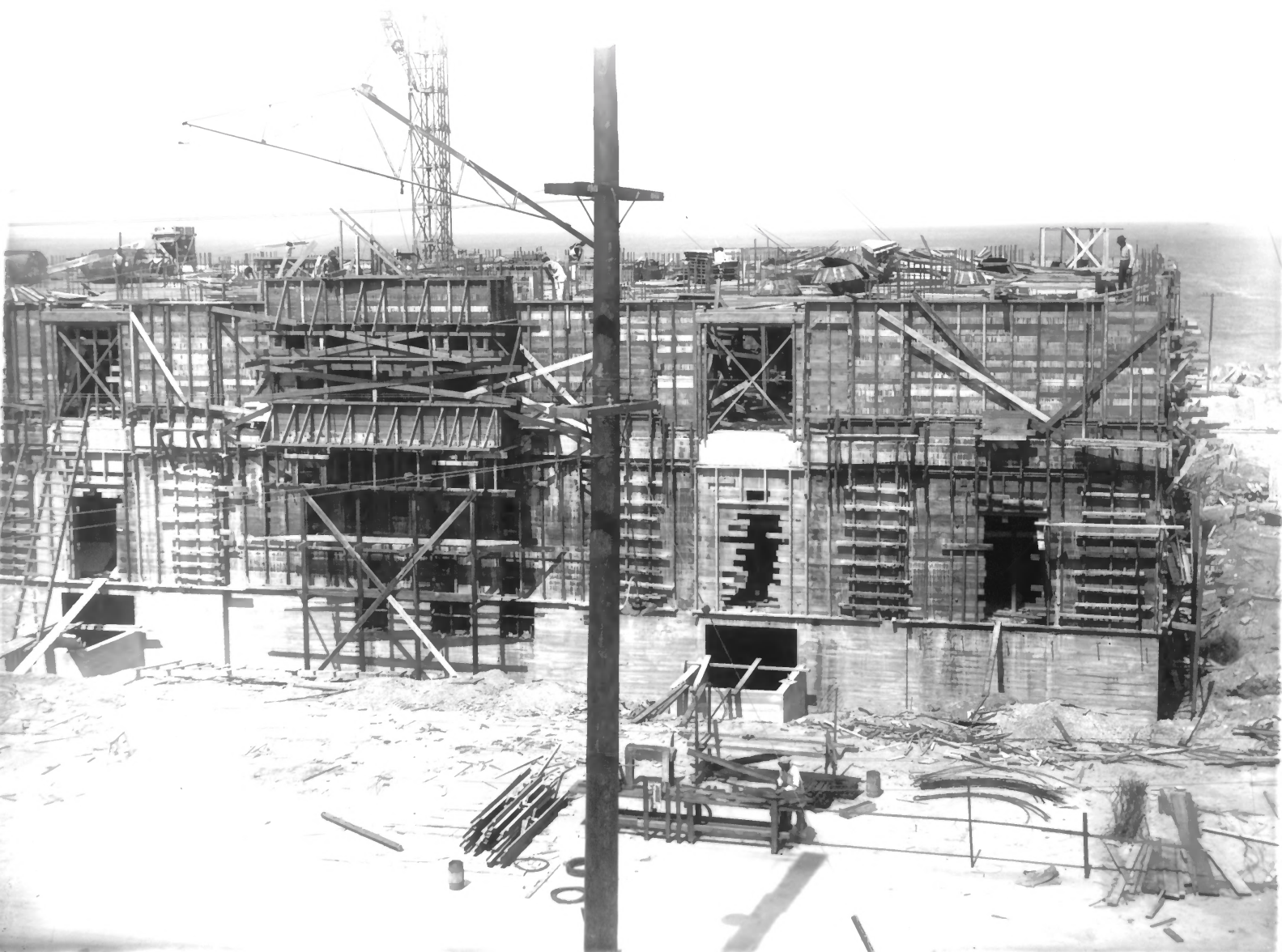
NORTH AND SOUTH ELEVATION
 Scale 1/8"=1'-0"

City of Los Angeles
HARBOR DEPARTMENT
 Homer Hopkins, Harbor Engineer
M.D. NO. 1 WAREHOUSE NO. 1
ELEVATIONS & TRANSVERSE SECTION
 Scale as noted Sept. 10, 1915 (11)
 Drawn - J.P.
 Traced - C.P.
 Checked - S.A. [Signature]
 Assistant Harbor Engineer
 Revised 8-4-16 R.H.
 1424

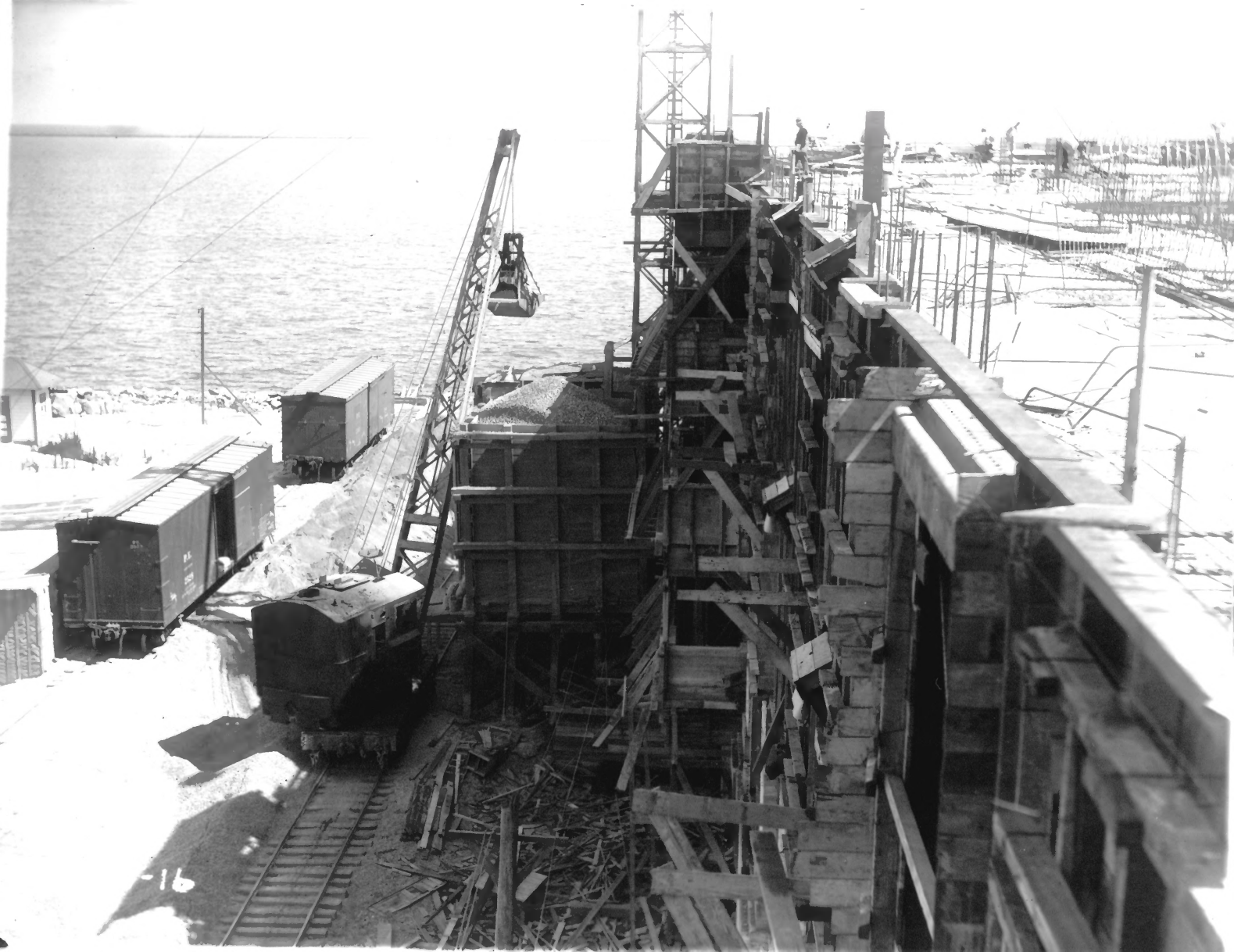




413 2-1-16











534-9-1-16



484 7-7-16





598-3-4



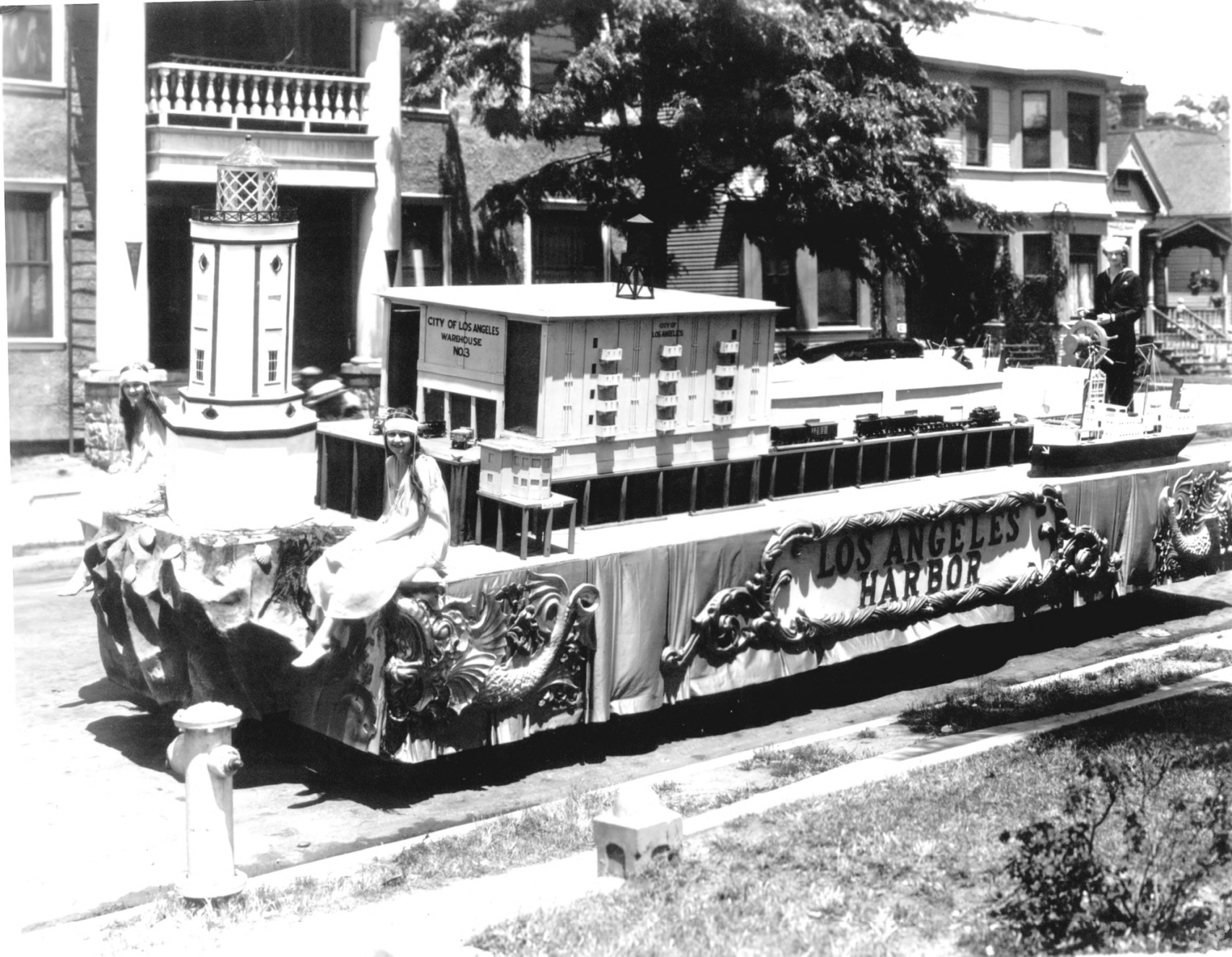
CITY OF
LOS ANGELES

WAREHOUSE
NO. 1

611-3-27-17



WAREHOUSE
NO. 1
CITY OF LOS ANGELES
BUILT BY THE
LOS ANGELES
SEWER & WATER
DEPARTMENT
1911



CITY OF LOS ANGELES
WAREHOUSE
NO. 3

CITY OF
LOS ANGELES

LOS ANGELES
HARBOR



Welcome to Los Angeles
Buenos Dias

CITY OF
LOS ANGELES
PORT
OF
LOS ANGELES

WAREHOUSE
NO. 1

FEDERAL BUREAU OF INVESTIGATION
CUSTOMS AND BORDER PROTECTION
STANDARD OPERATING PROCEDURES

PORT SIGNAL



Welcome Welcome
Benvenuti Benvenuti

PORT
OF
LOS ANGELES

WAREHOUSE
NO. 1

FPA
CUSTOMS BONDERS
STORAGE

2500 SIGNAL

WAREHOUSE
NO. 1

2500 SIGNAL

101A

101B







Bienven

POLICE

81054



Welcome to Riensville

FARMER SERVICE CENTER

POLICE



















SH

CLOSE
DOORS





C

405

405

5 H

405