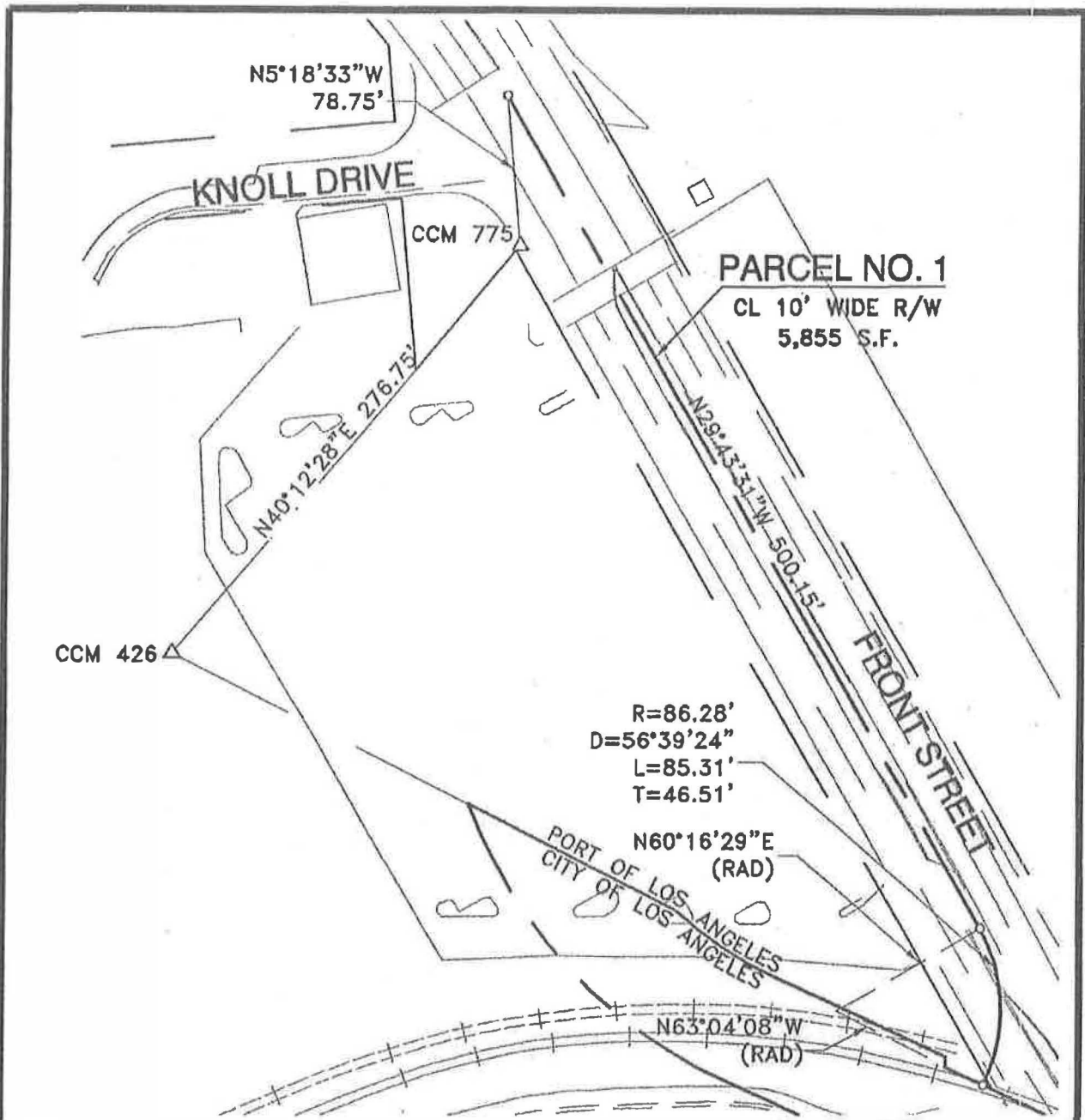


- NOTE:
- 1) No structures are shown on this drawing. Accurate subsurface information must be obtained from reliable and L.A.C.D. engineering records.
  - 2) Horizontal Datum is based on the North American Datum of 1983 (NAD 83), California Coordinate System, Zone 5, Feet.
  - 3) All distances shown on this drawing are grid distances. To obtain a measurable representation of the ground distance, divide the distance shown by the average scale factor of 1.000076.

NO.	DATE	DRAWN	REVISIONS	CHK'D	APP'D	SCALE: 1"=200'	CHIEF DESIGNER <i>[Signature]</i> ASSISTANT CHIEF ENGINEER <i>[Signature]</i> DESIGNER <i>[Signature]</i> EXAMINER <i>[Signature]</i>	PERMIT MAP - AUTHORITY P353 <b>LA CITY, GENERAL SERVICES DEPT.</b> THE PORT OF LOS ANGELES ENGINEERING DIVISION P.O. BOX 121 SAN PEDRO, CA 90724-0121	DRAWING NUMBER <b>2-2123-1</b>



**NOTE:**

- 1) No substructures are shown on this drawing. Accurate substructure information must be obtained from lessees and L.A.H.D. engineering records.
- 2) Horizontal Datum is based on the North American Datum of 1983 (NAD 83), California Coordinate System, Zone 5, Feet.
- 3) All distances shown on this drawing are grid distances. To obtain a reasonable representation of the ground distance, divide the distance herein by the average scale factor of 1.000076.



GRAPHIC SCALE

SCALE: 1"=80'	DATE: 5/7/83	RECOMMENDED FOR APPROVAL: <i>[Signature]</i>
DRAWN: PSOMAS	CHECKED: PSOMAS	DESIGNED: PSOMAS
ENGR/ARCH: <i>[Signature]</i>	ASSISTANT CHIEF DESIGNER ENGINEER: <i>[Signature]</i>	CHIEF HARBOR ENGINEER: <i>[Signature]</i>

PERMIT MAP - AUTHORITY NO. P353

LOS ANGELES CITY, GENERAL SERVICES DEPARTMENT

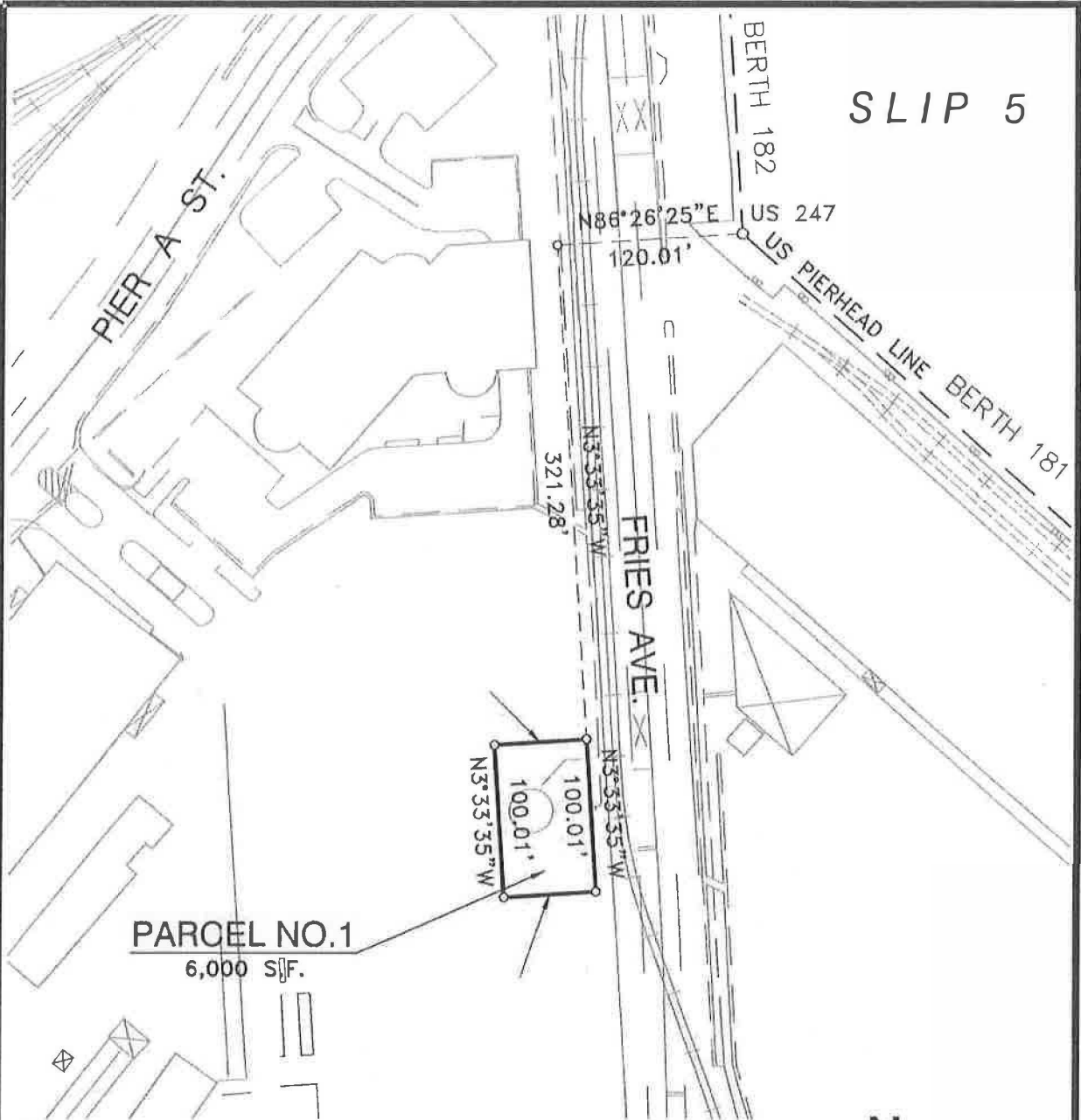


THE PORT OF LOS ANGELES  
 ENGINEERING DIVISION  
 1201 SOUTH MAIN STREET, LOS ANGELES, CA 90001

DRAWING NUMBER  
**5-4225-1**

POLARPROS\_VBL1\_12/86  
5-4225-1

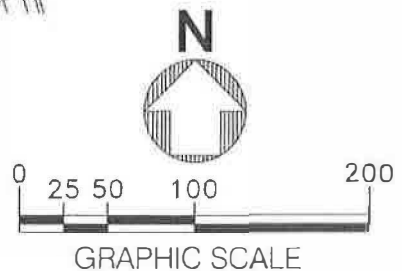
SLIP 5



PARCEL NO. 1  
6,000 S.F.

NOTE:

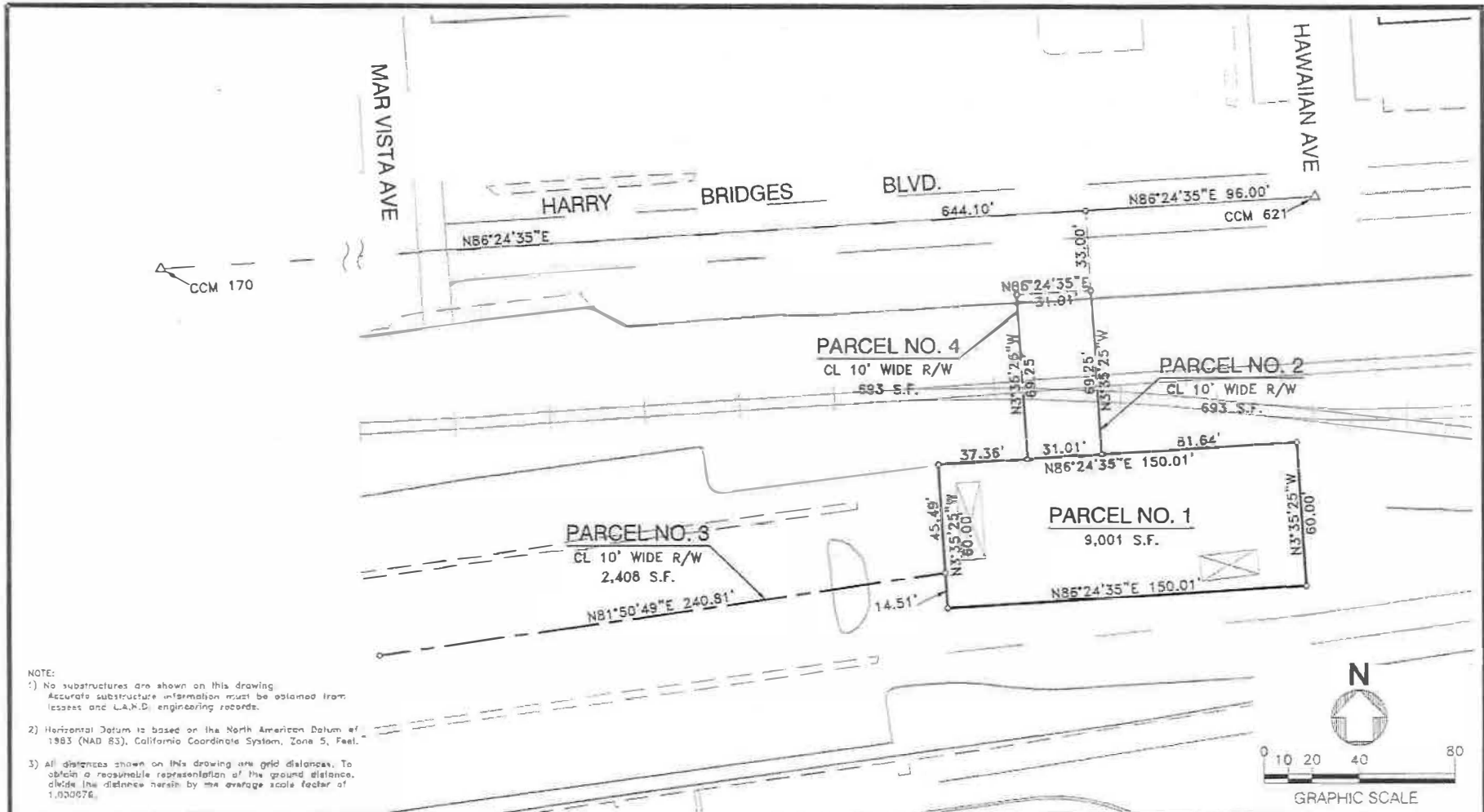
- 1) No substructures are shown on this drawing. Accurate substructure information must be obtained from lessees and L.A.H.D. engineering records.
- 2) Horizontal Datum is based on the North American Datum of 1983 (NAD 83), California Coordinate System, Zone 5, Feet.
- 3) All distances shown on this drawing are grid distances. To obtain a reasonable representation of the ground distance, divide the distance herein by the average scale factor of 1.000076.




REV. NO. 1 - CHANGED AUTHORITY NUMBER (05/14) *DRR ml*

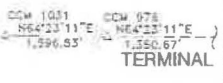
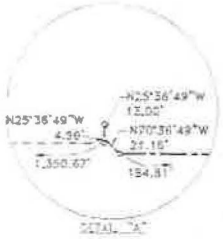
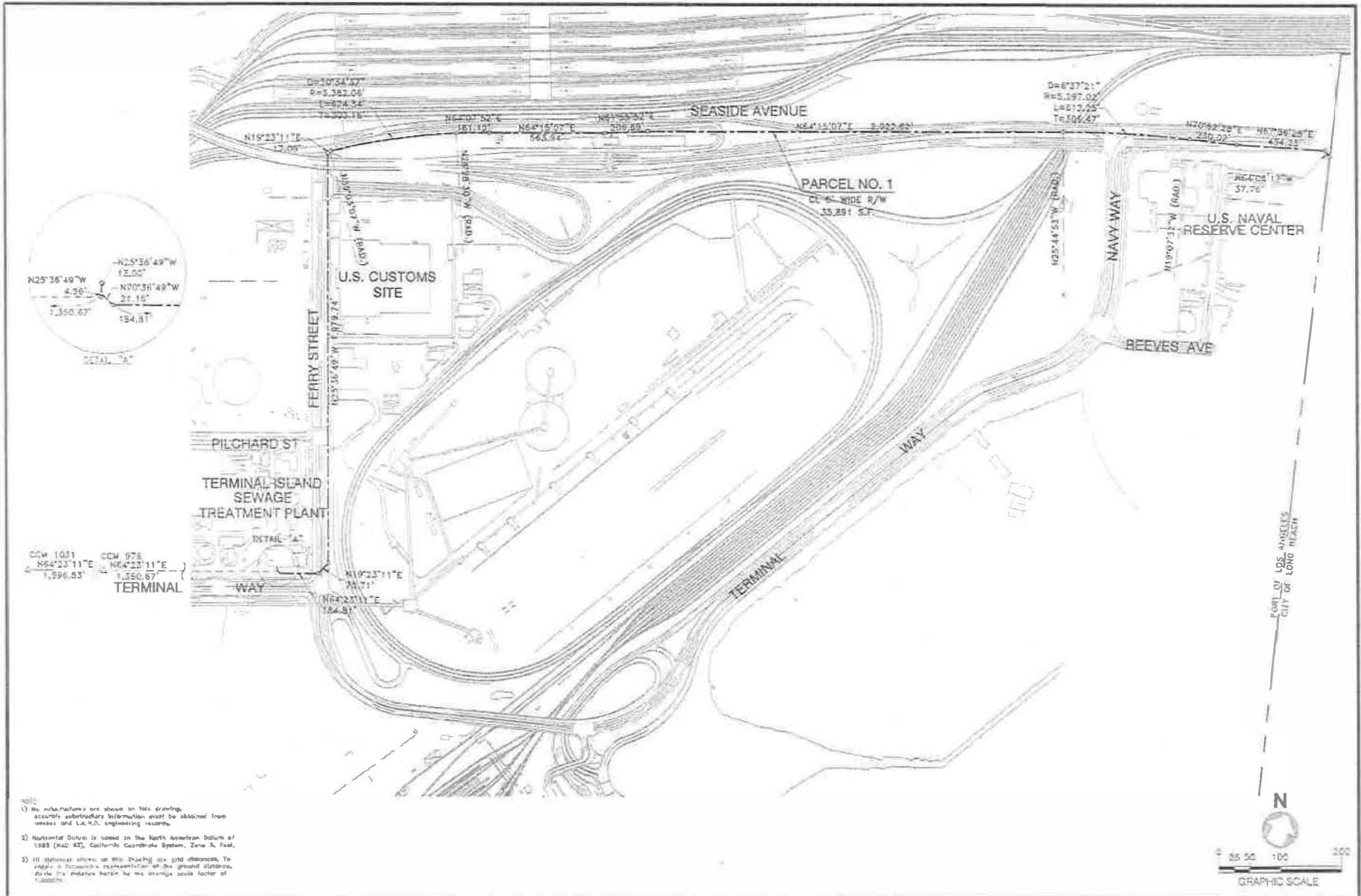
SCALE: 1"=100'		RECOMMENDED FOR APPROVAL		<b>PERMIT MAP - AUTHORITY NO. P353</b>	
DRAWN: PSOMAS	DATE: 4/03	CHIEF OF DESIGN <i>[Signature]</i>		<b>LOS ANGELES CITY, PUBLIC WORKS</b>	
CHECKED: PSOMAS	DATE: 4/03	ENGR/ARCH <i>[Signature]</i>		<b>THE PORT OF LOS ANGELES</b> <small>(ENGINEERING DEPARTMENT, BOX 151 SAN PEDRO, CA 90721-0151)</small>	
DESIGNED: PSOMAS		APPROVED <i>[Signature]</i> CHIEF HARBOR ENGINEER			

POLAROS\_VER.1\_12/96  
5-1839-2 REV 1



NO	DATE	DRAWN	REVISIONS -	CH'KD	APP'D	SCALE: 1"=40'	RECOMMENDED FOR APPROVAL	PERMIT MAP - AUTHORITY NO. P353		
1	05/14	DRR	CHANGED AUTHORITY NO. FROM 03469 TO P353	DRR	<i>[Signature]</i>	DRAWN: PSOMAS 4/03 CHECKED: PSOMAS 4/03 DESIGNED: PSOMAS 4/03 ENGR/ARCH	<i>[Signature]</i> CHIEF OF DESIGN	<b>LOS ANGELES CITY, PUBLIC WORKS</b>		
						<i>[Signature]</i> Daniel R. Rensch <i>[Signature]</i> John D. Marabone	ASSISTANT CHIEF HARBOR ENGINEER <i>[Signature]</i>	APPROVED <i>[Signature]</i> Stacey S. Jones CHIEF HARBOR ENGINEER	 <b>THE PORT OF LOS ANGELES</b> <small>INCORPORATED BY ACT OF THE LEGISLATURE OF CALIFORNIA, 1852</small>	DRAWING NUMBER 45486-1

PSOMAS 4/03 12/29  
 45486-1 REV. 1



- NOTES:
- 1) No infrastructure are shown on this drawing. accurate infrastructure information must be obtained from records and L.A.P.D. engineering records.
  - 2) Horizontal Datum is based on the North American Datum of 1983 (NAD 83), California Geodetic System, Zone 10, East.
  - 3) All distances shown on this drawing are grid distances. To enter a horizontal representation of the ground distance, divide the distance herein by the average scale factor of 1.00000.

NO.	DATE	ISSUED	REVISIONS	BY	APP'D	SCALE	1"=300'	PROJECT NO.	PERMIT MAP - AUTHORITY NO. P353	
1	03/14/24	000	NO CHANGE TO PERMIT MAP - AUTHORITY NO. P353	BR	BR	SCALE	1"=300'	PROJECT NO.	LOS ANGELES CITY, PUBLIC WORKS	
							DESIGNED: P353/AS 4/23	 REGISTERED PROFESSIONAL ENGINEER CIVIL No. 10000 State of California	 <b>THE PORT OF LOS ANGELES</b> ENGINEERING DIVISION, P.O. BOX 151 SAN PEDRO, CA 90721-0151	
							DRAWN: P353/AS 4/23			 REGISTERED PROFESSIONAL ENGINEER CIVIL No. 10000 State of California
							CHECKED: P353/AS 4/23	 REGISTERED PROFESSIONAL ENGINEER CIVIL No. 10000 State of California	 REGISTERED PROFESSIONAL ENGINEER CIVIL No. 10000 State of California	PROJECT NO. 2-2451