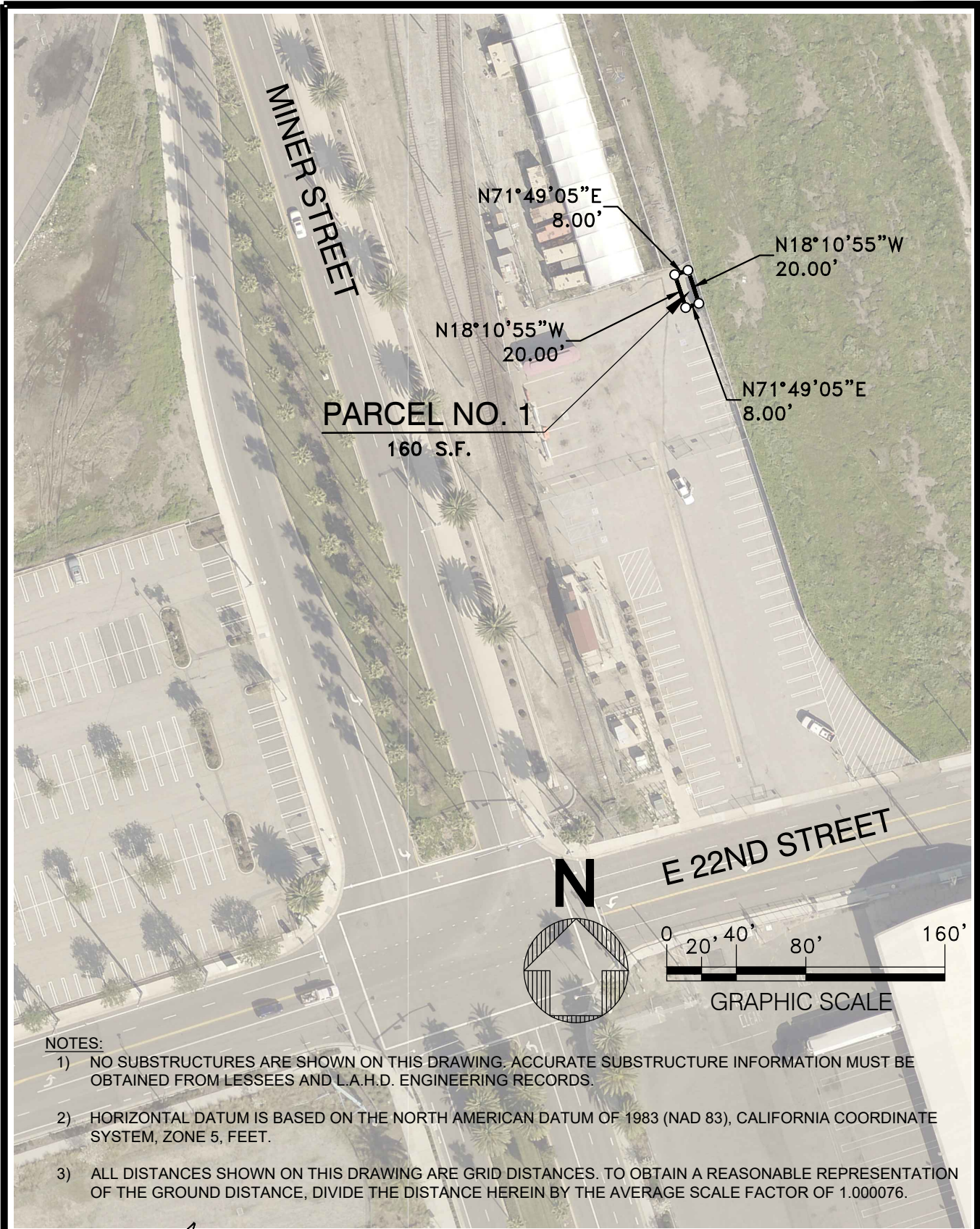


DWG: N:\cadd\project\R.O.W. LEASES\Signed Drawings\5-7393.dwg USER: hoangp
 DATE: Jan 27, 2021 10:54am XREFS BDRY-PIER IMAGES\5_6471_17206 LS_6471_17206 LS_6477_17206 LS_6477_17206
 POLAPROJ_VER_1_12/96



NOTES:

- 1) NO SUBSTRUCTURES ARE SHOWN ON THIS DRAWING. ACCURATE SUBSTRUCTURE INFORMATION MUST BE OBTAINED FROM LESSEES AND L.A.H.D. ENGINEERING RECORDS.
- 2) HORIZONTAL DATUM IS BASED ON THE NORTH AMERICAN DATUM OF 1983 (NAD 83), CALIFORNIA COORDINATE SYSTEM, ZONE 5, FEET.
- 3) ALL DISTANCES SHOWN ON THIS DRAWING ARE GRID DISTANCES. TO OBTAIN A REASONABLE REPRESENTATION OF THE GROUND DISTANCE, DIVIDE THE DISTANCE HEREIN BY THE AVERAGE SCALE FACTOR OF 1.000076.

SCALE: AS SHOWN		<p style="text-align: center;">PERMIT MAP - AUTHORITY NO. RP20-21</p> <p style="text-align: center;">LITTLE ITALY OF LOS ANGELES ASSOCIATION</p>	
DRAWN: P. HOANG			
CHECKED: C. BROWN		<p style="text-align: center;">THE PORT OF LOS ANGELES</p> <p style="text-align: center;">ENGINEERING DIVISION</p> <p style="text-align: center;">425 S. PALOS VERDES STREET SAN PEDRO CA 90731-3309</p>	
DESIGNED: P. HOANG			
ENGR/ARCH			
<p style="text-align: center;"><i>Phoek Hoang</i></p> <p style="text-align: center;">CHIEF HARBOR ENGINEER</p>		<p style="text-align: center;">DRAWING NUMBER</p> <p style="text-align: center;">5-7393</p>	
<p style="text-align: center;"><i>Stuart L. Fricke</i></p> <p style="text-align: center;">ASSISTANT CHIEF OF HARBOR ENGINEER</p>		<p style="text-align: center;">LA</p>	
<p style="text-align: center;"><i>William Wall</i></p> <p style="text-align: center;">DATE</p>		<p style="text-align: center;">1-26-21</p>	

TRANSMITTAL 1