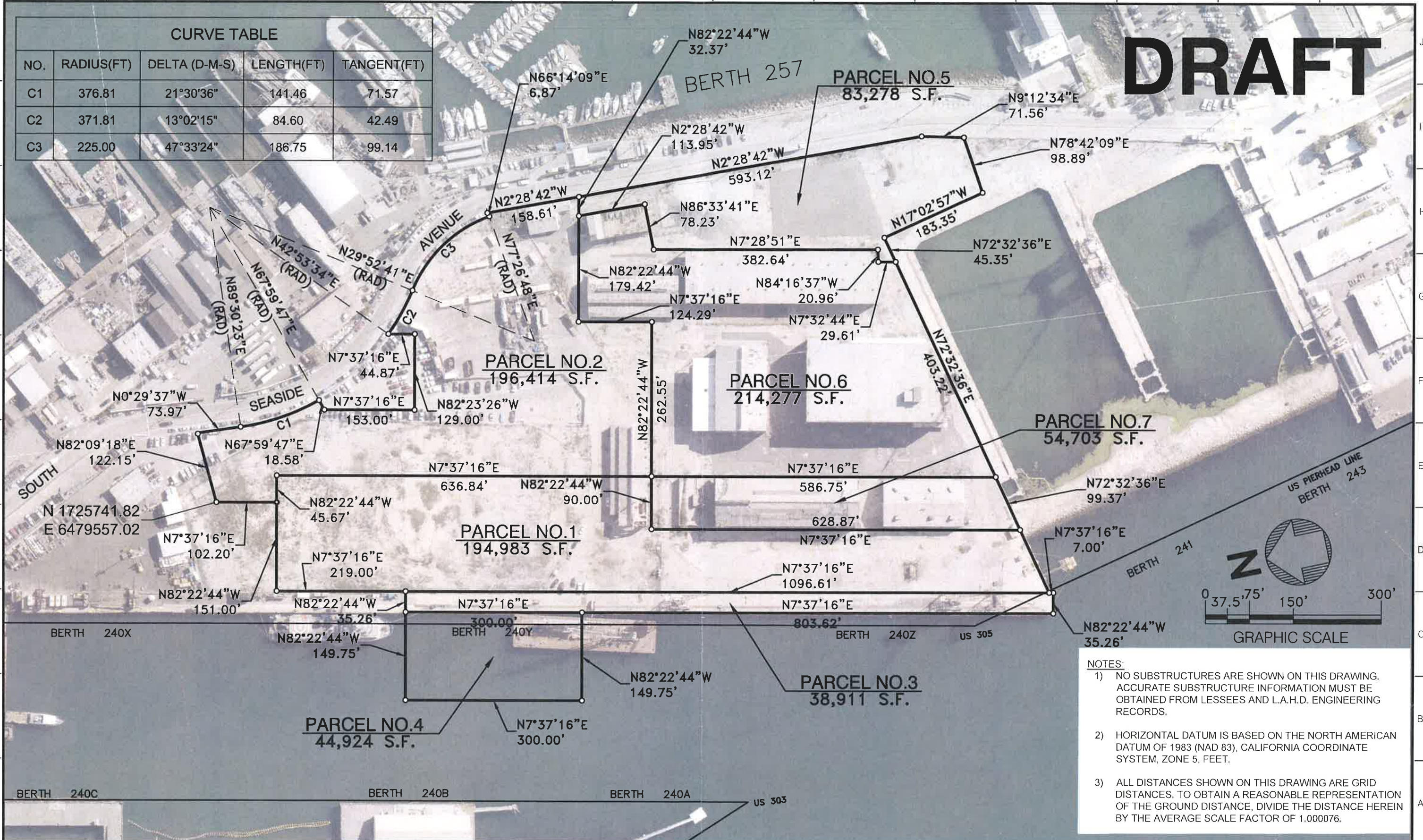


# DRAFT

CURVE TABLE				
NO.	RADIUS(FT)	DELTA (D-M-S)	LENGTH(FT)	TANGENT(FT)
C1	376.81	21°30'36"	141.46	71.57
C2	371.81	13°02'15"	84.60	42.49
C3	225.00	47°33'24"	186.75	99.14



- NOTES:**
- 1) NO SUBSTRUCTURES ARE SHOWN ON THIS DRAWING. ACCURATE SUBSTRUCTURE INFORMATION MUST BE OBTAINED FROM LESSEES AND L.A.H.D. ENGINEERING RECORDS.
  - 2) HORIZONTAL DATUM IS BASED ON THE NORTH AMERICAN DATUM OF 1983 (NAD 83), CALIFORNIA COORDINATE SYSTEM, ZONE 5, FEET.
  - 3) ALL DISTANCES SHOWN ON THIS DRAWING ARE GRID DISTANCES. TO OBTAIN A REASONABLE REPRESENTATION OF THE GROUND DISTANCE, DIVIDE THE DISTANCE HEREIN BY THE AVERAGE SCALE FACTOR OF 1.000076.

SDWG: I:\projects\45686\DWG\45686.dwg (1/11/2018 11:52am) P:\FILES\DWG\45686.dwg (1/11/2018 11:52am) USER: BAACCHD  
 DATE: MAY 28 2018 11:52am P:\FILES\DWG\45686.dwg (1/11/2018 11:52am) USER: BAACCHD

NO.	DATE	DRAWN	REVISIONS -	CHKD	APP'D	NO.	DATE	DRAWN	REVISIONS -	CHKD	APP'D	SCALE: 1" = 100'		CHIEF OF DESIGN		PERMIT MAP - AUTHORITY NO.	

**SPACE EXPLORATION TECHNOLOGIES CORP.**  
 THE PORT OF LOS ANGELES  
**ENGINEERING DIVISION**  
 425 S. PALMS VERDES STREET SAN PEDRO CA 90731-3309  
 SHEET NUMBER: 45686