

# **Southern California International Gateway Project (SCIG)**

**Recirculated Draft EIR  
Public Hearing**

**October 18, 2012 6:00PM  
Banning's Landing Community Center**

**Environmental Management Division, Port of Los Angeles**



# SCIG Recirculated Draft EIR

## *Introduction*

### Welcome

- Chris Cannon, Director of Environmental Management, Port of Los Angeles

### Introduction

- Presentation on the Southern California International Gateway (SCIG) Project Recirculated Draft Environmental Impact Report (EIR)
- Public Comments on the Recirculated Draft EIR

# **SCIG Recirculated Draft EIR**

## ***Meeting Format***

- This is a public hearing on the Recirculated Draft EIR for the SCIG Project.
- Public comments on the Recirculated Draft EIR accepted via:
  - Comment card (please fill out card at entrance)
  - Oral comments limited to 3 minutes each (please fill out a speaker card)
  - Oral comments at comment table (no time limit)
  - Written comments sent by mail or email
- All public comments will be included and responded to in the Final EIR.
- All correspondences will be recorded.

# SCIG Recirculated Draft EIR

## *Milestones*

- The Supplemental Notice of Preparation (NOP) for SCIG was released on October 31, 2005
- The Draft EIR was released for public comment/review from September 23, 2011 to February 1, 2012
- Two public meetings were held in November 2011
- 143 comment letters and 329 oral and written comments were received during the public comment/review period
- Based on public comments and reanalysis, a decision was made to recirculate the Draft EIR
- The Recirculated Draft EIR was released on September 27, 2012 for a 45-day public comment/review period ending on November 9, 2012

# SCIG Recirculated Draft EIR

## *Summary of Key Changes to the Analysis*

- CEQA baseline is now 2010 instead of 2005
- Operations period changed from 30 to 50 years (2016-2066)
- Throughput based on most current 2009 San Pedro Bay Ports cargo demand forecast
- Maximum capacity or buildout occurs in 2035 instead of 2023
- Updated data and air quality models
- Floating baseline for Health Risk Assessment
- Comparison of the Project to the No Project Alternative for air quality (information only)

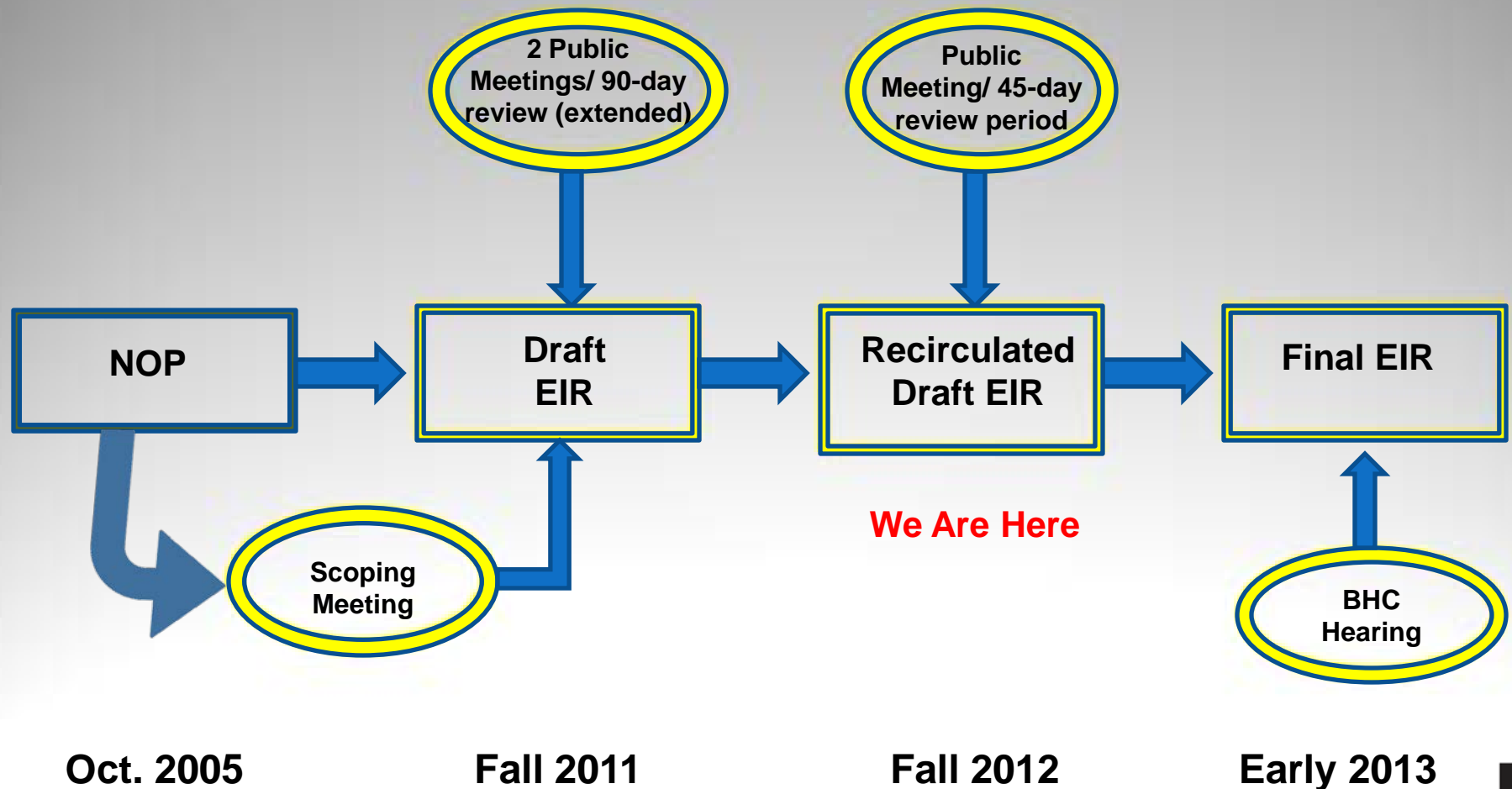
# SCIG Recirculated Draft EIR

## *List of Revised Chapters/Sections/Appendices*

- Executive Summary
- Chapter 1 Introduction
- Chapter 2 Project Description
- Chapter 3 Environmental Analysis
- Section 3.2 Air Quality and Meteorology
- Section 3.6 Greenhouse Gas Emissions/Climate Change
- Section 3.7 Hazards and Hazardous Materials
- Section 3.8 Land Use
- Section 3.9 Noise
- Section 3.10 Transportation/Circulation
- Chapter 4 Cumulative Analysis
- Chapter 5 Alternatives
- Chapter 6 Environmental Justice
- Chapter 7 Socioeconomics and Environmental Quality
- Chapter 10 References
- Chapter 12 Acronyms
- Appendix C1 through C3 (Air Quality)
- Appendix F1 SCIG Noise Technical Study
- Appendix G1 SCIG Transportation Appendix
- Appendix G2 SCIG Rail Simulation Modeling Study
- Appendix G4 Intermodal Rail Analysis
- Appendix H Summary of Changes

# SCIG Recirculated Draft EIR

## Environmental Review Process



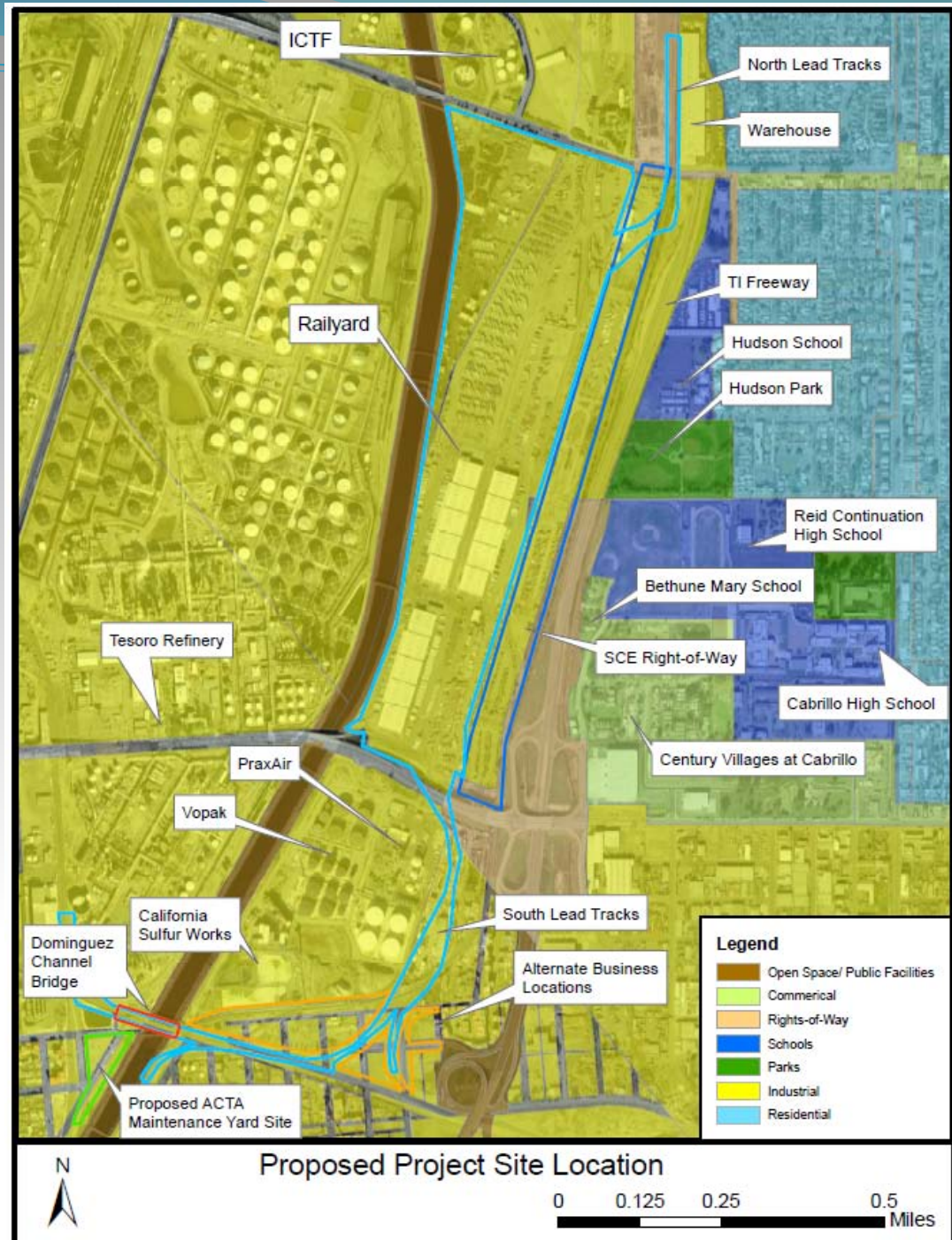
# SCIG Recirculated Draft EIR

## *Project Objectives*

- (1) Provide an additional near-dock intermodal rail facility that would help meet anticipated intermodal demand.
- (2) Reduce truck miles traveled associated with moving containerized cargo by providing a near-dock intermodal facility utilizing the Alameda Corridor.
- (3) Provide shippers carriers, and terminal operators with comparable options for near-dock intermodal rail facilities.
- (4) Construct a near-dock intermodal rail facility to provide maximum intermodal capacity for the transfer of marine containers between truck and rail.
- (5) Provide infrastructure improvements consistent with the California Goods Movement Action Plan.

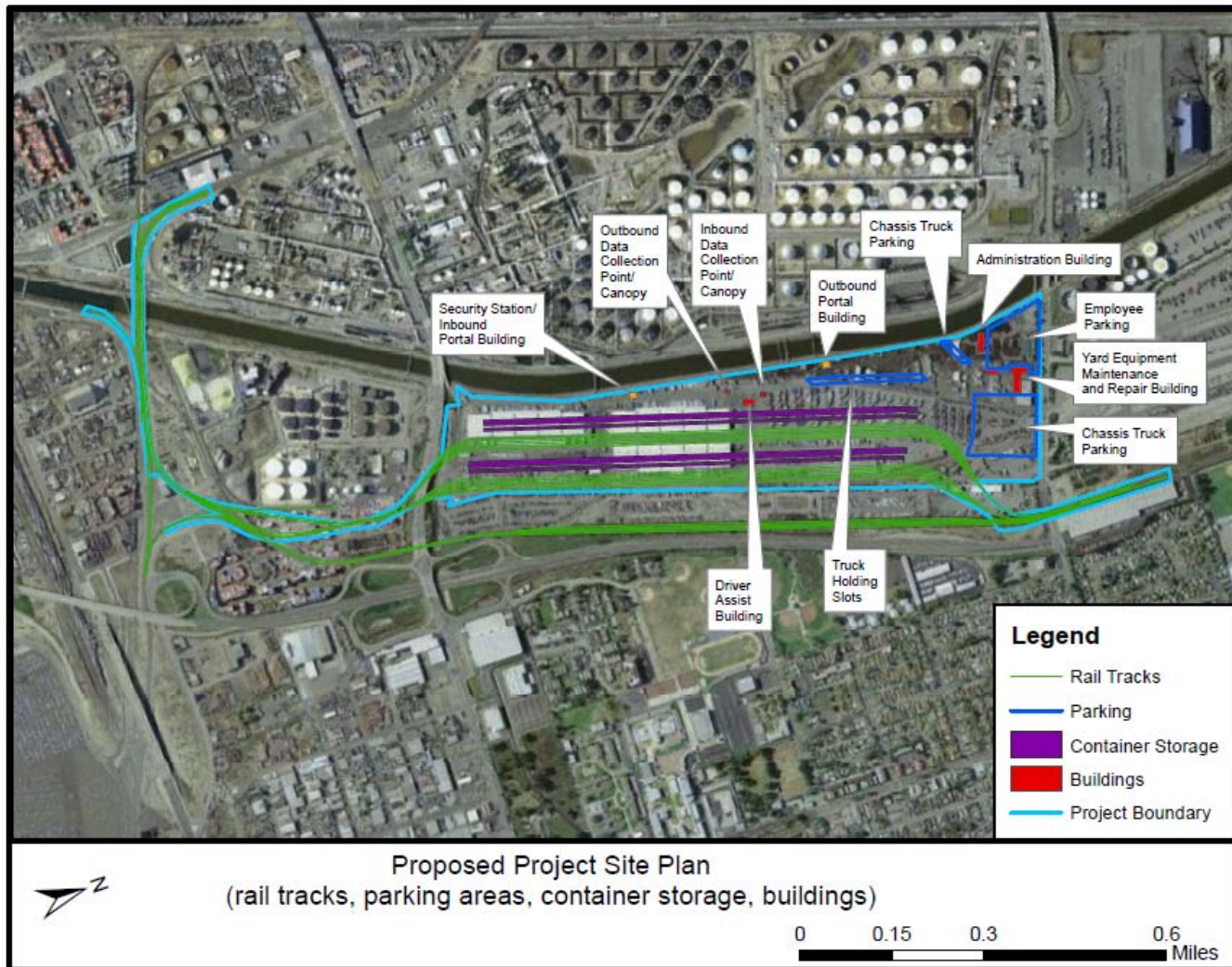


# SCIG Recirculated Draft EIR Proposed Project Site



# SCIG Recirculated Draft EIR

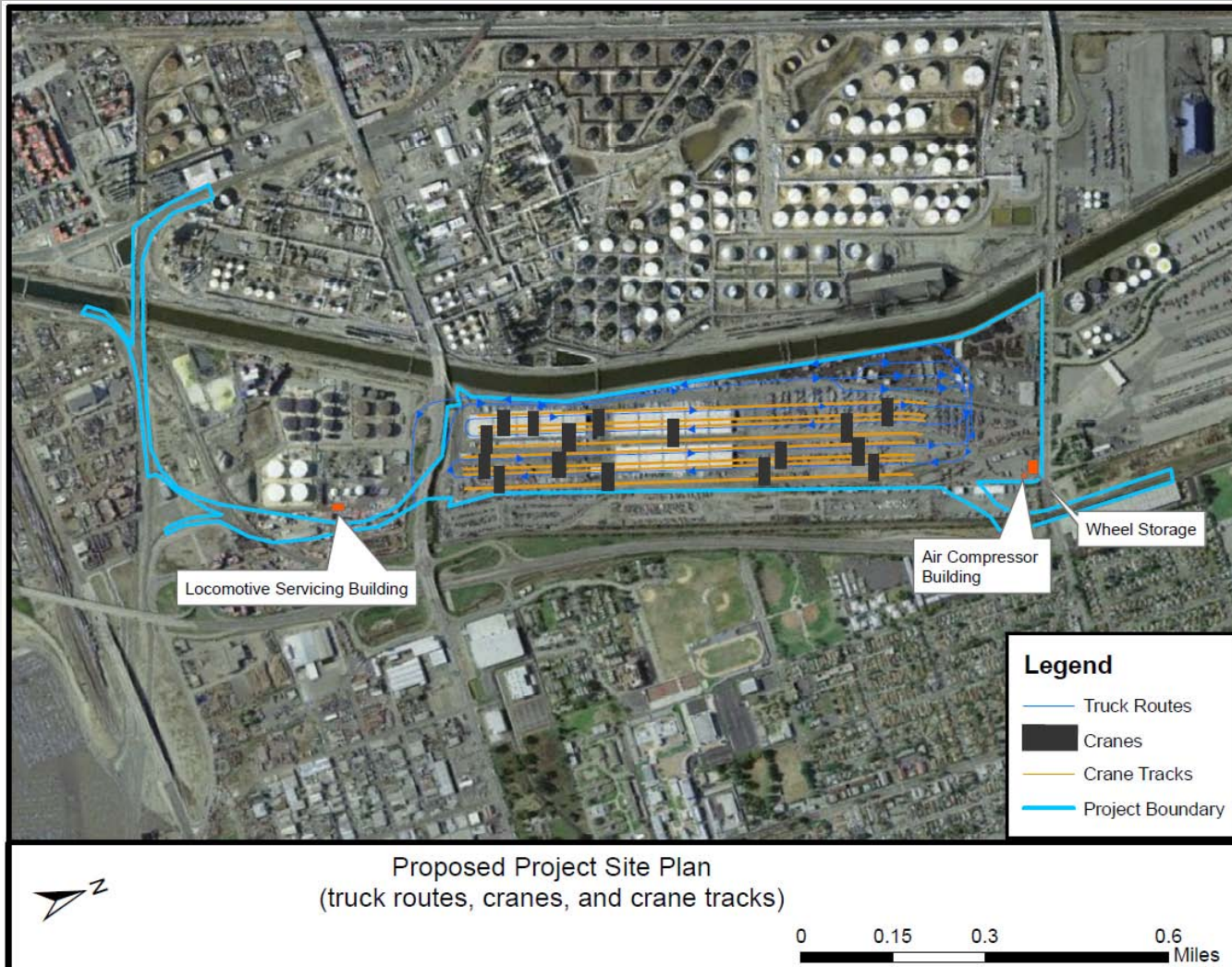
## Proposed Project Site Plan





# SCIG Recirculated Draft EIR

## Proposed Project Site Plan



# SCIG Recirculated Draft EIR

## *Proposed Project – Key Elements (no change)*

- Electric-powered rail-mounted gantry cranes
- 10 liquefied natural gas (LNG)-fueled yard hostlers
- New LEED-certified administration building
- High mast lighting with automation and energy efficient/directional shielding
- New automatic truck entry gate to reduce on-road queuing
- Dedicated truck routes using GPS guidance systems
- On-road trucks meeting 2007 EPA on-road standards and 2010 CAAP
- Ultra-low-emitting switching locomotive engines
- Soundwall along east side of Terminal Island Freeway (as mitigation)

# SCIG Recirculated Draft EIR

## *Proposed Project Site – Project Concept*





# **SCIG Recirculated Draft EIR**

## ***Proposed Project Site – PCH Grade Separation***



# SCIG Recirculated Draft EIR

## *Proposed Project Site – Dominguez Channel Bridge*





# SCIG Recirculated Draft EIR

## Proposed Project Throughput and Alternatives Analyzed

- Proposed Project
- No Project Alternative
- Reduced Project Alternative

	Proposed Project	Alt 1: No Project	Alt 2: Reduced Project
<b>Annual TEUs</b>	570,808 annually in 2016 2.8 million annually by 2035	2.8 million annually by 2035	570,808 in 2016 1.85 million by 2035
<b>Trucks (annual one-way trips)</b>	0.4 million in 2016 2.0 million by 2035 (to/from SCIG)	0.9 million in 2010 3.1 million by 2035 (to/from Hobart)	0.4 million in 2016 1.33 million by 2035 (to/from SCIG)
<b>Trains (round trips/day)</b>	2 trips in 2016 8 trips by 2035	0	2 trips in 2016 6 trips by 2035



# **SCIG Recirculated Draft EIR**

## ***Proposed Project Impacts***

### ***Significant and Unavoidable Impacts***

#### ***No change to:***

- Aesthetics (historic resources)
- Air Quality and Meteorology (construction and operation, criteria pollutants)
- Cultural Resources (removal of historic rail bridge)
- Greenhouse Gas Emissions and Climate Change (construction and operation)
- Land Use (secondary impacts)
- Noise (nighttime operations)

# **SCIG Recirculated Draft EIR**

## ***Proposed Project Impacts***

### ***Impacts that are Less than Significant after Mitigation***

#### ***New change:***

- Air Quality and Meteorology (health risk from exposure to toxic air contaminants)

#### ***No change to:***

- Biological Resources (construction)
- Cultural Resources (construction)
- Noise (construction)
- Utilities and Public Services (solid waste)
- Water Resources (construction within the Dominguez Channel)

# **SCIG Recirculated Draft EIR**

## ***Proposed Project Impacts***

### ***Less than Significant Impacts***

#### ***No change to:***

- Aesthetics (lighting/glare)
- Air Quality and Meteorology (operation emissions and odors)
- Geology (construction and operation)
- Hazards and Hazardous Materials (construction and operation)
- Land Use (use designation and zoning)
- Transportation/Circulation (construction and operation)
- Utilities and Public Services (construction and operation)
- Water Resources (construction and operation)

# **SCIG Recirculated Draft EIR**

## ***Proposed Project Impacts***

### ***Cumulative Impacts After Mitigation***

#### ***No change to:***

- Aesthetics (historic resources)
- Air Quality and Meteorology (construction and operation, criteria pollutants) except for health risk (new change)
- Cultural Resources (historic resources)
- Greenhouse Gas Emissions and Climate Change (construction and operation)
- Land Use (secondary impacts)
- Noise (construction and operation)
- Utilities and Public Services (solid waste)

# **SCIG Recirculated Draft EIR**

## ***Select Mitigations and Project Conditions***

### **Mitigation Measures:**

- MM AQ-8: Low-Emission Drayage Trucks
- MM AQ-9: Periodic Review of New Technology and Regulations
- MM AQ-10: Substitution of New Technology

### **Project Conditions:**

- PC AES-1: Intensive Landscaping on West Side of Terminal Island Freeway
- PC AQ-11: Zero Emission Technologies Demonstration Program
- PC AQ-12: San Pedro Bay Ports CAAP Measure RL-3

# **SCIG Recirculated Draft EIR**

## ***Document Availability***

### **CDs and Executive Summaries**

- (310) 732-3675

### **Website**

- Full Document & Public Notice: <http://www.portoflosangeles.org>
- Under the Environment/CEQA Tab

### **Hard Copies available for review**

- Port of Los Angeles, Environmental Management Division
- Libraries:
  - L.A. Public Library, Central Branch
  - L.A. Public Library, San Pedro Branch
  - L.A. Public Library, Wilmington Branch
  - Carson Regional Library
  - Martin Luther King Library
  - Long Beach Public Library
  - Bret Harte Neighborhood Library

# **SCIG Recirculated Draft EIR**

## ***Providing Public Comment***

**Public comment should be limited to revised chapters or portions of the Recirculated Draft EIR.**

### **At Tonight's Meeting**

- If you wish to provide comments, please fill out a Speakers Card and return to the front desk
- Speakers will be limited to 3 minutes
- Oral comments at comment table (no time limit)

### **After Tonight's Meeting**

- Comments will be accepted until November 9, 2012
- Comments must be sent to (address next slide):

# **SCIG Recirculated Draft EIR**

## ***Providing Public Comment***

### **POLA**

Chris Cannon

Port of Los Angeles, EMD

425 South Palos Verdes Street

San Pedro, CA 90731

### **Email**

[ceqacomment@portla.org](mailto:ceqacomment@portla.org)

***More Information: (310) 732-3675***



# **Public Comments**

## **Mary McCormick**

### **Facilitator**