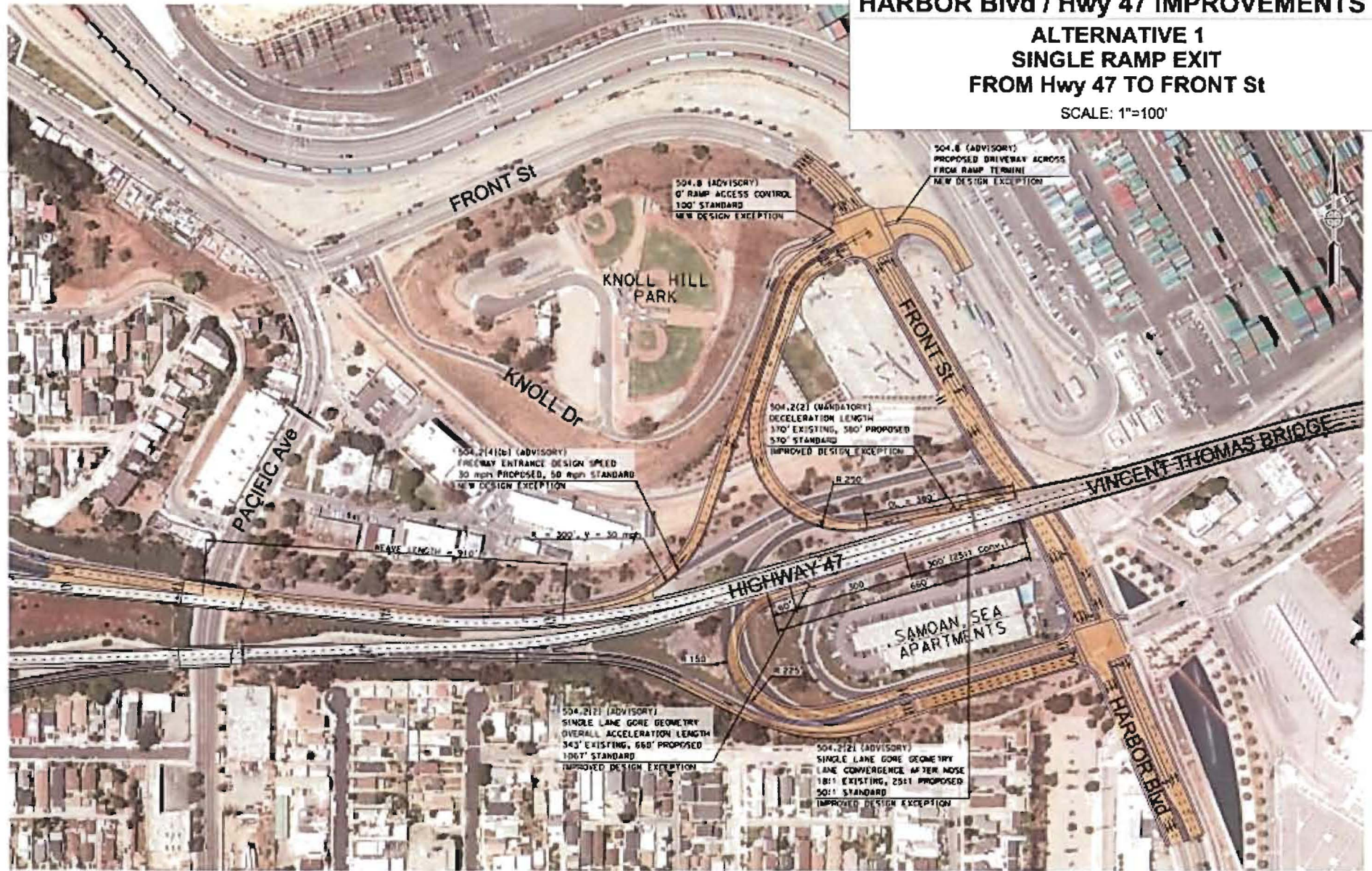


TRANSMITTAL #1  
PRELIMINARY PROJECT LAYOUT

HARBOR Blvd / Hwy 47 IMPROVEMENTS

ALTERNATIVE 1  
SINGLE RAMP EXIT  
FROM Hwy 47 TO FRONT St

SCALE: 1"=100'



PRELIMINARY PROJECT DRAFT - SUBJECT TO CHANGE