
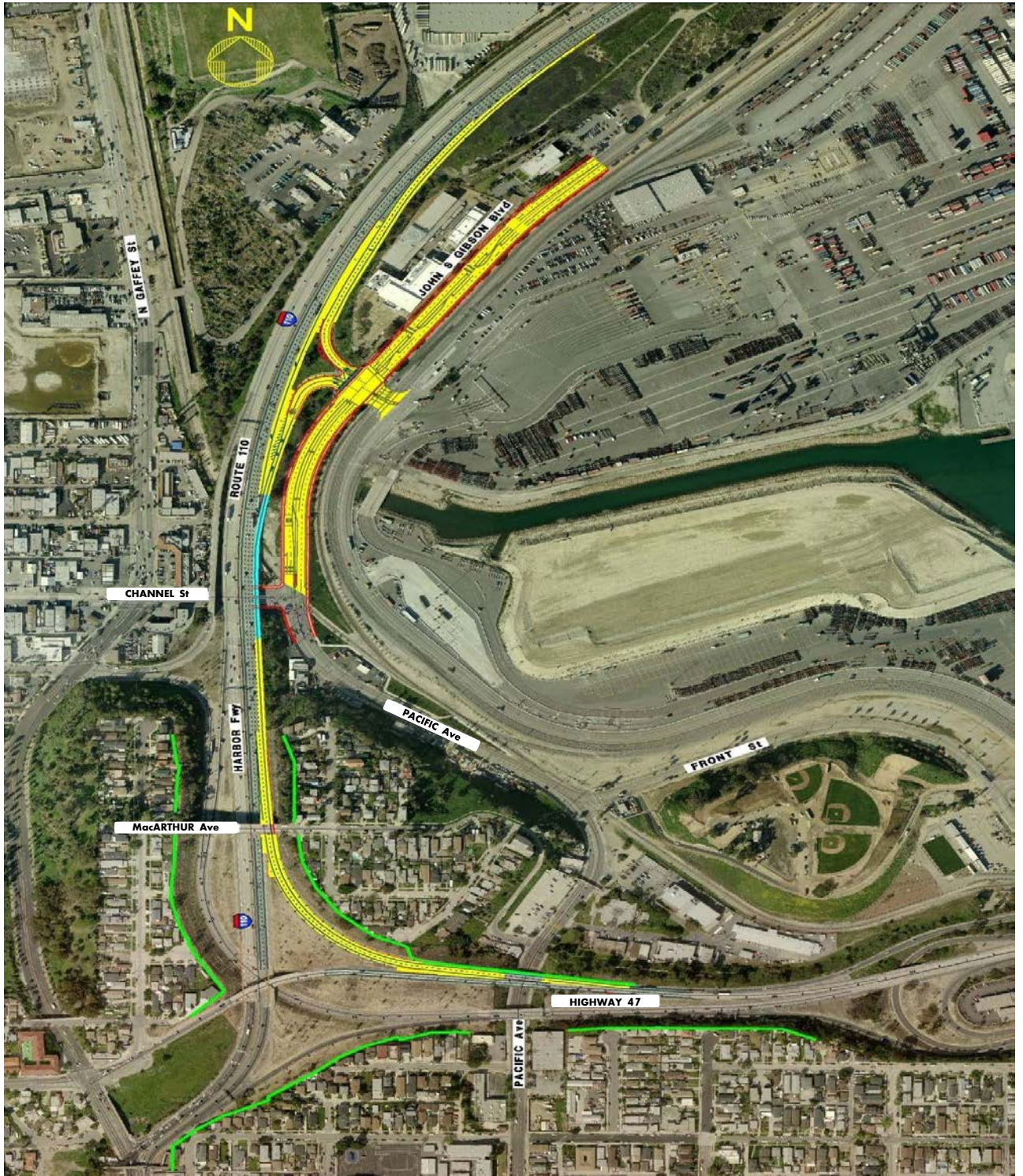




**Project Location**


|                          |                                    |   |  |
|--------------------------|------------------------------------|---|--|
| SCALE<br><b>AS SHOWN</b> | RECOMMENDED FOR APPROVAL           | <b>John S. Gibson Blvd/I-110 Freeway Access Ramp Improvements and<br/>SR-47/I-110 Northbound Connector Widening</b> |  |
| DRAWN:                   | CHIEF OF DESIGN                    | <b>LOCATION KEY MAP</b>   |  |
| CHECKED:                 |                                    |   |  |
| DESIGNED:                |                                    |   |  |
| ENGR/ARCH                | ASSISTANT HARBOR<br>CHIEF ENGINEER | APPROVED  |  <b>PORT OF LOS ANGELES</b><br>CONSTRUCTION DIVISION P.O. BOX 151<br>SAN PEDRO, CA 90733-0151 |
|                          |                                    | CHIEF HARBOR ENGINEER   |  |



|           |                                    |
|-----------|------------------------------------|
| SCALE     | RECOMMENDED FOR APPROVAL           |
| AS SHOWN  |                                    |
| DRAWN:    | CHIEF OF DESIGN                    |
| CHECKED:  |                                    |
| DESIGNED: |                                    |
| ENGR/ARCH | ASSISTANT HARBOR<br>CHIEF ENGINEER |
|           |                                    |
|           |                                    |

**John S. Gibson Blvd/I-110 Freeway Access Ramp Improvements and  
SR-47/I-110 Northbound Connector Widening**

**Aerial View**

|                       |  |               |
|-----------------------|--|---------------|
| APPROVED              |  <b>PORT OF LOS ANGELES</b><br><small>CONSTRUCTION DIVISION P.O. BOX 151<br/>SAN PEDRO, CA 90733-0151</small> | SPEC No. 2734 |
| CHIEF HARBOR ENGINEER |  |               |