



THE PORT LA
OF LOS ANGELES

AMERICA'S PORT®

Gateway Water Management Authority

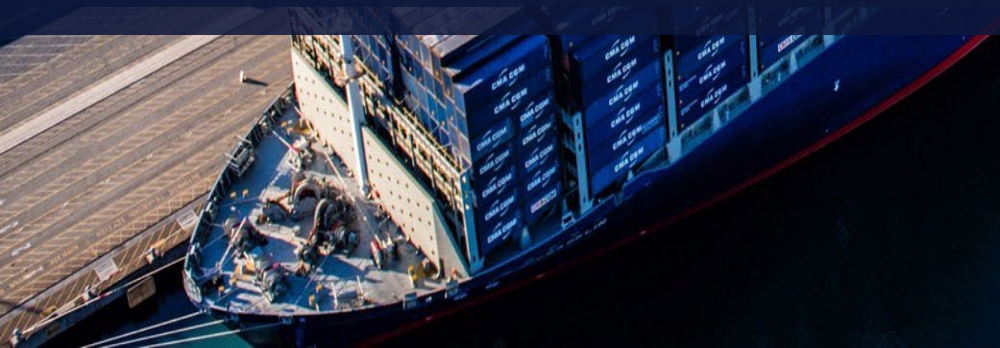
MOU to Perform Required Clean Water Act Monitoring

Presented by:

Kat Prickett
Supervisor, Water Group
Environmental
Management

Presented to:

Board of Harbor
Commissioners

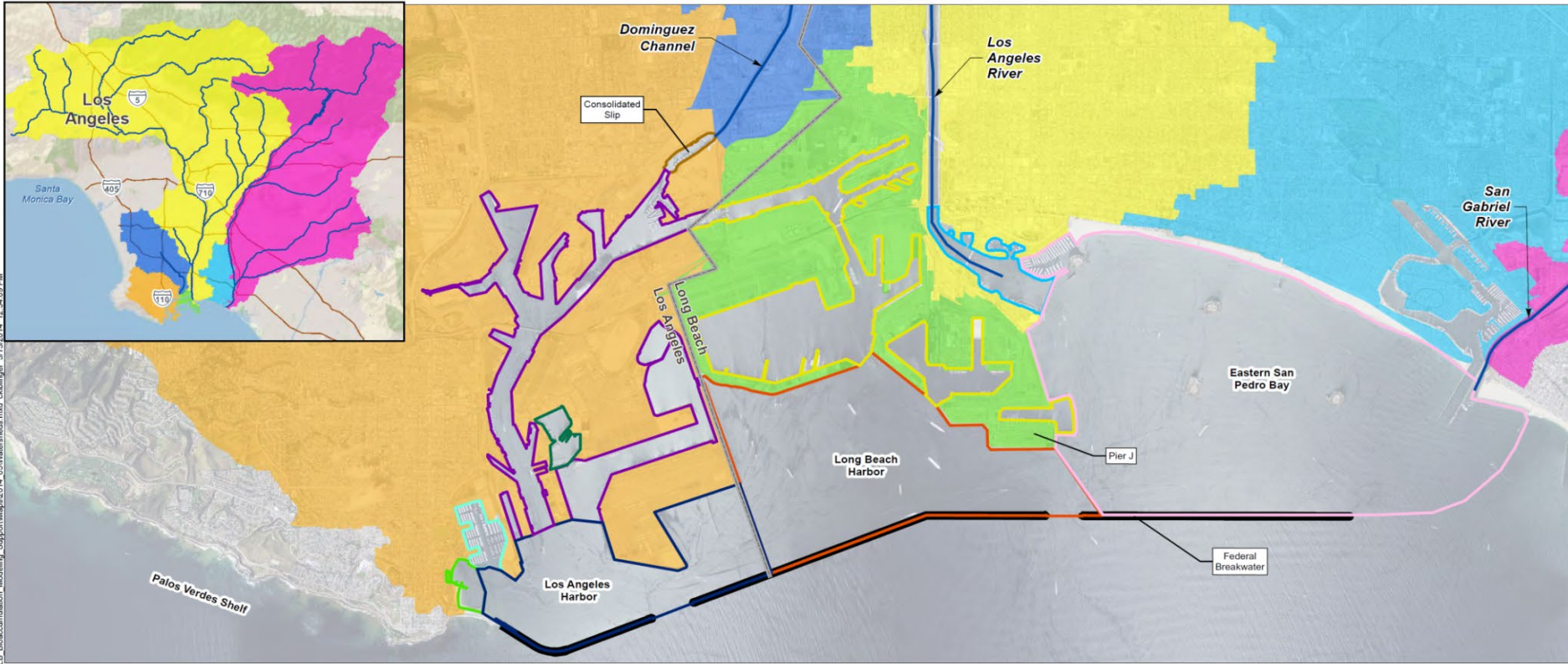


BACKGROUND

- Dominguez Channel, Los Angeles Harbor and Long Beach Harbor have listed impairments due to multiple chemical constituents (metals, organics) in sediment and fish, as well as benthic health impairments
- Dominguez Channel and Greater Los Angeles/Long Beach Harbor Waters Toxics Total Maximum Daily Load (TMDL) established by Los Angeles Regional Water Quality Control Board, approved by the United States Environmental Protection Agency in March 2012
- TMDL is being revised by regulators

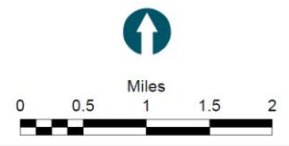


Los Angeles Harbor TMDL Waterbodies



Q:\Judas\120711-01.01_Port_of_Los_Angeles\POLA_POLB_Bioaccumulation_Modeling_Support\Maps\2014_05\Watersheds.mxd cklanger 5/12/2014 12:34:09 PM

Dominguez Channel Watershed	Federal Breakwater	TMDL Waterbodies	Los Angeles Outer Harbor (inside breakwater)
Los Angeles River Watershed	Jurisdictional Boundary	Fish Harbor	Los Angeles River Estuary (Queensway Bay)
POLA Watershed		Los Angeles Harbor - Cabrillo Marina	Long Beach Inner Harbor
POLB Watershed		Los Angeles Harbor - Consolidated Slip	Long Beach Outer Harbor (inside breakwater)
San Pedro Bay Watershed		Los Angeles Harbor - Inner Cabrillo Beach Area	Eastern San Pedro Bay
San Gabriel River Watershed		Los Angeles Inner Harbor	



REQUIRED TMDL MONITORING

- Annual
 - Wet and dry weather receiving water monitoring and chemistry
 - Annual reporting and assessment

- Twice Every Five Years
 - Sediment chemistry and toxicity
 - Benthic community
 - Benthic health: Sediment Quality Objective (SQO)
 - Fish tissue chemistry

REGIONAL MONITORING COALITION (RMC)

- Harbor Toxics TMDL names responsible parties, which are individually responsible for monitoring; however, coordination is encouraged
- Port of Los Angeles/Port of Long Beach convened several cities, Los Angeles County, and Los Angeles County Flood Control District to form the RMC
- RMC selected Los Angeles Gateway Region Integrated Regional Water Management Joint Powers Authority (GWMA) in 2014 to provide fiduciary, contracting and administrative duties
- Monitoring has been conducted successfully for ten years under this arrangement
- The proposed MOU with GWMA is an amendment to extend the MOU by five years

MOU COST SHARE

- Twelve cities and public agencies are members of the RMC
- Total cost of the five-year program is \$3,234,020
- The Harbor Department's share is \$547,820, which is a substantially lower cost than conducting individual monitoring

Staff recommends:

Approval of First Amendment to MOU No.19-3653 with the Los Angeles Gateway Region Integrated Regional Water Management Joint Powers Authority and Harbor Toxics Total Maximum Daily Load responsible parties for the reimbursement to cover the City of Los Angeles Harbor Department's cost share obligation of \$547,820 over a five-year period



AMERICA'S PORT®

THANK YOU



portoflosangeles.org

@PortofLA