



August 18, 2020

Los Angeles Harbor Department  
Purchasing Office  
1st Floor  
500 Pier Street  
Wilmington, CA 90744  
Attn: Leticia Caldera

Reference BID F-1091 for a Multibeam Sonar, Seafloor Systems herewith submits the attached Name Brand quote(s).

1. SeaBat T50-R with Mounting bracket and fairing, including Flex Mode, MultiDetect, and Normalized Backscatter licenses, AML Micro X Sound Velocity Sensor, Integrated Teledyne INS Type-30 Applanix OceanMaster, Applanix POSPac, and 3 days onsite installation, integration, and training all inclusive
2. SeaBat T20-R with Mounting bracket and fairing, including Flex Mode, MultiDetect, and Normalized Backscatter licenses, AML Micro X Sound Velocity Sensor, Integrated Teledyne INS Type-30 Applanix OceanMaster, Applanix POSPac, and 3 days onsite installation, integration, and training all inclusive

Seafloor Systems specializes in delivering a broad range of Hydrographic Survey equipment solutions, scaled to fit customers budget, level of expertise, and performance requirements. We provide sales and installation support for small survey vessels, large survey vessels, and solutions based on our own Unmanned Survey Vessels (USV's).

We are a California-based, Small Veteran Owned Business, with a Global presence

Seafloor Systems, Inc.  
4415 Commodity Way  
Shingle Springs, CA 95682

**Josh Grava**  
Vice President  
(O) +1 530-677-1019

(M) +1 805 570 1728

E-mail: [josh.grava@seafloorsystems.com](mailto:josh.grava@seafloorsystems.com)

Cage Code: 1KRZ9  
DUNS Number: 059124052  
FEIN : 93-1262374  
NAICS Code: 334519

Seafloor has over 20 years' experience in the Hydrographic Multibeam community. Our expertise is complete turnkey, integrated Multibeam and Single Beam solutions, and applying these systems both to manned survey boats and to our EchoBoat and HydroCat Unmanned Surface Vessels.



I was personally with RESON for 19 years before joining Seafloor Systems 4 years ago. At that juncture, Seafloor Systems became an official, and leading distributor of Teledyne Marine SeaBat products.

Seafloor are official support and sales distributors for Teledyne Marine (SeaBats, Odom, Blueview), Applanix, AML, HYPACK, QPS, CARIS, Valeport, Klein, Carlson Merlin LIDAR, Velodyne, etc.

We maintain a lease/demo/support pool of 6 x SeaBat systems, 4 x Applanix Systems, AML SV sensors and profilers, all of which are available for support if needed. We can offer same day delivery if needed, from our California facilities.

Seafloor Systems is offering Name Brand exact model, SeaBat T50-R. We maintain the price submitted last time, as that was already a discounted offer. However, we herewith also extend a discount off the INS 30 and included the optional licenses at no additional cost (\$30,000 purchase value). The total discounted offer on this T50-R package is over \$50,000.

This quote, and price, is representative of what the best shallow water multibeam system costs. POLA Hydrographic Branch has been wanting the SeaBat T50, specified in the previous two RFP's. It costs what it costs.

#### SeaBat T50-R with INS Type30

- 190-420kHz broadband
- 1m to 550m depth range
- 6mm range resolution
- 10-1024 user selectable beams
- 0.5 x 1.0 degree beams at 400kHz
- 10-165 degree swath coverage
- Reliable 7x Water Depth swath coverage in shallow water (1m to 25m depths)
- Sidescan, snippets backscatter, and water column (full bandwidth and compressed) included
- Option for Normalized backscatter (included in this offer)
- Option for MultiDetect (included in this offer)
- Option for Flex Mode
- Option FM X-Range
- Adaptive and fixed gates (Adaptive gates stick like glue to all bottom types and features)
- Tacker/Auto-Pilot feature that works very well compared to the SeaBat 7000 series version
- Mature visual displays/GUI
- Integrated Applanix Oceanmaster simplifies installation, eliminates the additional Applanix topside and associated cabling.

#### T-50-R, with integrated INS Type30 (OceanMaster)





However, if the Port's procurement system requires lowest cost, then we have an alternative similar equivalent solution, also at a discounted price, which does not compromise performance, high resolution, high efficiency, options, and support. For all intents and purposes, we offer the SeaBat T20-R with INS Type 30 as a lower-cost alternative with the same exact, proven equivalent, overall performance.

#### **T-20-R, with integrated INS Type30 (OceanMaster)**



Based on the same new technology platform, the SeaBat T20 is exactly the same as the T50 in every way, (same exact topside processor, same exact INS Type 30, same cables, same connectors, same projector). SeaBat T20-R has the same user interface, software and license options/capabilities, same swath coverage, same depth capability, same 1024 maximum beams, same 165 degree swath, same ultra clean data quality, same filtering, same low noise electronics, etc. The only difference is the receiver array is half the size, with 1.0 x 1.0 degree beams at 400kHz instead of 0.5 x 1.0 degree beams. In Shallow water, the resolution, swath coverage, and data quality will extremely comparable. For dredge applications, the operators will not see any difference in data quality, performance, or resolution. Both Teledyne Marine SeaBat T20 and T50 systems are top performers, best in class, current cutting-edge technology, backed by the same warranty and customer support

#### **SeaBat T20-R with INS Type30**

- 190-420kHz broadband
- 1m to 550m depth range
- 6mm range resolution
- 1.0 x 1.0 degree beams at 400kHz
- 10-1024 user selectable beams
- 10-165 degree swath coverage
- Reliable 7x Water Depth swath coverage in shallow water (1m to 25m depths)
- Sidescan, snippets backscatter, and water column (full bandwidth and compressed) included
- Option for Normalized backscatter (included in this offer)
- Option for MultiDetect (included in this offer)
- Option for Flex Mode (included in this offer)
- Option FM X-Range
- Adaptive and fixed gates (Adaptive gates stick like glue to all bottom types and features)
- Tacker/Auto-Pilot feature that works very well compared to the SeaBat 7000 series version
- Mature visual displays/GUI
- Integrated Applanix Oceanmaster simplifies installation, eliminates the additional Applanix topside and associated cabling.



If shopping for the lowest price that will not only get the job done, but exceed all expectations in terms of offering best performance available on the market, the SeaBat T20-R is a significant consideration. It shares the same design architecture, same acoustics, and the same exact cutting edge new technology platform. The SeaBat T-series systems are modular, future-proof, swappable, and upgradeable between T20 and T50 configurations. Future plug-and-play upgrade is an option by simply adding a SeaBat T50 receiver.

Attached for your reference are:

- Seafloor Systems Letter Head Quote OPTION 1 (SeaBat T50-R-INS30)
- Seafloor Systems Letter Head Quote OPTION 2 (SeaBat T20-R-INS30)
- Bid Packet Singed OPTION 1 (SeaBat T50-R-INS30)
- Bid Packet Singed OPTION 2 (SeaBat T20-R-INS30)
- SeaBat T50-R Product Data Sheet which includes specifications of the INS Type 30
- SeaBat T20-R Product Data Sheet which includes specifications of the INS Type 30
- Applanix POSPac Data Sheet
- AML Data sheet
- Teledyne Authorized Reseller Letter
- Seafloor Systems W-9

Again, as a local California based small business, we can offer you direct, immediate support, with personnel and physical same-equipment resources available in our Shingle Springs facility for backups. Seafloor Systems has been in this business for many years; we understand first-hand how critical it is for immediate attention and support in the Hydrographic, Channel maintenance, and Dredging communities. We are positioned well to deliver all of this to Port of Los Angeles.

We look forward to the opportunity to work with you on this purchase, installation, and future support thereof. If you have any questions or require anything else from us, please let me know.

Sincerely yours

A handwritten signature in black ink, appearing to read "Josh Grava".

Josh Grava  
Vice President, Seafloor Systems

TO: HARBOR DEPARTMENT PURCHASING OFFICE  
500 Pier "A" Street  
Berth 161  
Wilmington, CA 90744

BID NO. F-1091 Page 1

Show this number on envelope

Contract No. 39933

Option 2  
T20-R

1. COMPLETE CONTRACT

This entire Bid Request shall become the contract upon its execution by the Executive Director on behalf of the Harbor Department of the City of Los Angeles. The complete contract shall consist of the entire Bid (including Specifications), this page, terms and conditions, any addendums, and when required, CONTRACTOR'S BOND. Contractor will be provided with a copy of the executed contract.

2. GOODS AND SERVICES TO BE PROVIDED BY THE CONTRACTOR

The Contractor agrees, upon acceptance of this offer by the City, to furnish the goods and services herein specified according to the terms and conditions as set forth herein.

3. AMOUNT TO BE PAID

The City agrees to pay the contractor for the goods or services in the manner described in the paragraph entitled "PAYMENTS" on the reverse side of this form. Unless otherwise indicated by the Bidder, remittance by the City for goods or services will be made to the address below.

4 CHOICE OF ALTERNATIVE PROVISIONS; OPTIONS; NOTIFICATION

When alternative provisions are requested, or options are offered, the contractor will be notified as to which provision, or option, is Being accepted when notification is sent that the Contractor is the successful bidder.

5. DECLARATION OF NON-COLLUSION

The undersigned certifies (or declares) under penalty of perjury that this bid is genuine and not sham or collusive, or made in the interest or on behalf of any person, firm, or corporation not herein named; that the bidder has not directly or indirectly induced or solicited any other bidder to put up a sham bid, or any other person, firm or corporation to refrain from bidding, and that the bidder has not in any manner sought by collusion to secure any advantage over other bidders.

6. LEGAL JUSTIFICATION

This agreement shall be deemed entered into in Los Angeles, California, and shall be governed and construed in accordance with the laws of the State of California.

EXECUTED AT: Ventura, CA ON THE 18 DAY OF August, 2020  
City, State Date Month Year

BIDDER MUST COMPLETE AND SIGN BELOW:

Firm Name Seafloor Systems, Inc.  
Phone (530) 677-1019 Fax \_\_\_\_\_  
Address 4415 Commodity Way, Shingle Springs, CA 95682  
Street City State Zip  
Signature [Signature] Printed Name Josh Grava Printed Title Vice President  
Signature [Signature] Printed Name John Tamplin Printed Title President, CFO

(AFFIX CORPORATE SEAL HERE)

a) **Two signatures:** One by Chairman of Board of Directors, President, or a Vice-President **AND** one by Secretary, Assistant Secretary, Chief Financial Officer or an Assistant Treasurer.

b) **One signature:** By corporate designated individual together with properly attested resolution of Board of Directors authorizing person to sign.

NOTARIZATION: Bids executed outside the State of California must be sworn to and notarized below.

County of \_\_\_\_\_  
State of \_\_\_\_\_ S.S.  
Subscribed and sworn this date \_\_\_\_\_, 201\_\_

In witness whereof the Board of Harbor Commissioners of the City of Los Angeles has caused this contract to be executed by the Executive Director of the Harbor Department of said City and said Contractor has executed this contract the day and year written below.

By \_\_\_\_\_  
Executive Director Harbor Department

Approved as to form and legality

10/13, 2020

City Attorney

BY \_\_\_\_\_ Deputy

Notary Seal

Signature

Date

TO: HARBOR DEPARTMENT PURCHASING OFFICE  
500 Pier "A" Street  
Berth 161  
Wilmington, CA 90744

Option 2  
T20-R

BID NO. F-1091 Page 1

Show this number on envelope

Contract No. 39933

1. COMPLETE CONTRACT

This entire Bid Request shall become the contract upon its execution by the Executive Director on behalf of the Harbor Department of the City of Los Angeles. The complete contract shall consist of the entire Bid (including Specifications), this page, terms and conditions, any addendums, and when required, CONTRACTOR'S BOND. Contractor will be provided with a copy of the executed contract.

2. GOODS AND SERVICES TO BE PROVIDED BY THE CONTRACTOR

The Contractor agrees, upon acceptance of this offer by the City, to furnish the goods and services herein specified according to the terms and conditions as set forth herein.

3. AMOUNT TO BE PAID

The City agrees to pay the contractor for the goods or services in the manner described in the paragraph entitled "PAYMENTS" on the reverse side of this form. Unless otherwise indicated by the Bidder, remittance by the City for goods or services will be made to the address below.

4. CHOICE OF ALTERNATIVE PROVISIONS; OPTIONS; NOTIFICATION

When alternative provisions are requested, or options are offered, the contractor will be notified as to which provision, or option, is Being accepted when notification is sent that the Contractor is the successful bidder.

5. DECLARATION OF NON-COLLUSION

The undersigned certifies (or declares) under penalty of perjury that this bid is genuine and not sham or collusive, or made in the interest or on behalf of any person, firm, or corporation not herein named; that the bidder has not directly or indirectly induced or solicited any other bidder to put up a sham bid, or any other person, firm or corporation to refrain from bidding, and that the bidder has not in any manner sought by collusion to secure any advantage over other bidders.

EXECUTED AT: Ventura, CA ON THE 18 DAY OF August, 2020  
City, State Date Month Year

BIDDER MUST COMPLETE AND SIGN BELOW:

Firm Name Seafloor Systems, Inc.

Phone (530)677-1019

Fax

Address 4415 Commodity Way Shingle Springs, CA 95682

City State Zip

Signature [Signature] Printed Name Josh Grava Printed Title Vice President

Signature [Signature] Printed Name John Tamplin Printed Title President, CFO

Signature Printed Name Printed Title

(Approved Corporate Signature Methods)



(AFFIX CORPORATE SEAL HERE)

a) **Two signatures:** One by Chairman of Board of Directors, President, or a Vice-President **AND** one by Secretary, Assistant Secretary, Chief Financial Officer or an Assistant Treasurer.

b) **One signature:** By corporate designated individual together with properly attested resolution of Board of Directors authorizing person to sign.

NOTARIZATION: Bids executed outside the State of California must be sworn to and notarized below.

County of \_\_\_\_\_

State of \_\_\_\_\_ S.S.

Subscribed and sworn this date

In witness whereof the Board of Harbor Commissioners of the City of Los Angeles has caused this contract to be executed by the Executive Director of the Harbor Department of said City and said Contractor has executed this contract the day and year written below.

Approved as to form and legality

\_\_\_\_\_, 201\_\_

City Attorney

# FORMAL REQUEST FOR BID

CITY OF LOS ANGELES  
HARBOR DEPARTMENT

BID NO. F-1091

**SUBMIT BID TO:**

Los Angeles Harbor Department  
Purchasing Office, 1st Floor  
500 Pier A Street  
Wilmington, CA 90744

**OFFICE HOURS:**

7:30 a.m. – 4:30 p.m.  
Monday through Friday (excluding Holidays)

**BID DUE BEFORE  
2:00 P.M.  
AUGUST 20, 2020**

**Buyer:** Leticia Caldera, Management Analyst (310) 732-3890

**BIDS WILL BE PUBLICLY  
OPENED**

ALL ITEMS REQUESTED MAY BE QUOTED AS "OR EQUAL".

AFFIRMATIVE ACTION – AN APPROVED AA PLAN OR CERTIFICATION, IF NOT ON FILE, WILL BE REQUIRED PRIOR TO AWARD OF CONTRACT.

QUANTITY AND UNIT	ITEMS and DESCRIPTION	UNIT PRICE QUOTED	EXTENSION
-------------------	-----------------------	----------------------	-----------

**MULTI-BEAM SONAR**

The Los Angeles Harbor Department seeks the purchase of an **ULTRA HIGH RESOLUTION MULTI-BEAM ECHOSOUNDER WITH FULLY INTEGRATED INERTIAL NAVIGATION SYSTEMS (INS)**.

**REFERENCE DRAWING:**

- Port of Los Angeles Construction Division Survey Section  
"Double Hull Catamaran Boat  
Existing Hull Mounting Details"  
(one page)

PRICES TO INCLUDE ALL CHARGES AND FEES EXCLUDING SALES TAX. "CHARGES AND FEES" INCLUDE BUT ARE NOT LIMITED TO DELIVERY, FREIGHT, SHIPPING, HANDLING, ETC.

REQ. NO.: I-2021-124/  
65483  
NOTIFY: L. Banh

STATE TIME OF DELIVERY: \_\_\_\_\_ DAYS AFTER RECEIPT OF ORDER TERMS  
DISCOUNT FOR PAYMENT WITHIN \_\_\_\_\_ DAYS. BIDDER MUST SIGN THIS  
BID ON PAGE 1

# FORMAL REQUEST FOR BID

CITY OF LOS ANGELES  
HARBOR DEPARTMENT

**BID NO. F-1091**  
(SHOW THIS NUMBER ON ENVELOPE)

1. PLEASE SELECT ONE PRODUCT BELOW:

A. 1 EA Each \$ 88,555.00

☒ **TELEDYNE RESON T50 MULTI-BEAM ECHOSOUNDER WITH FULLY INTEGRATED INERTIAL NAVIGATION SYSTEMS AND A 3-YEAR WARRANTY**

- A. AML Sea Surface Micro X Probe package (Surface Velocity Probe), 6000m
- B. Fairing add-on mounting bracket for sonar, and custom fabricated hardware for existing fixed pole mounting
- C. Flexmode software license
- D. Multi-detect software license
- E. Normalized backscatter software license

State Make and Model:

SeaBat T20-R

B. 1 EA Each \$ \_\_\_\_\_

☐ **R2SONIC 2024 WITH ULTRA HIGH DENSITY FEATURE MULTI-BEAM ECHOSOUNDER WITH FULLY INTEGRATED INERTIAL NAVIGATION SYSTEMS AND A 3-YEAR WARRANTY**

- A. AML Sea Surface Micro X Probe package (Surface Velocity Probe), 6000m
- B. Fairing add-on mounting bracket for sonar, and custom fabricated hardware for existing fixed pole mounting
- C. Pipeline mode software license
- D. Ultra High Density software license
- E. Truepix software license

State Make and Model:

# FORMAL REQUEST FOR BID

CITY OF LOS ANGELES  
HARBOR DEPARTMENT

**BID NO. F-1091**  
(SHOW THIS NUMBER ON ENVELOPE)

LINES 2 THROUGH 4 APPLY TO BOTH PRODUCTS ABOVE.

2. 1 EA Each \$ 76,500.00  
**INTEGRATED INERTIAL NAVIGATION SYSTEMS (APPLANIX REAL TIME KINETIC  
POS MV OCEANMASTER)**

- Inertial Measurement Unit installed dry/top side, cables included
- Global Navigation Satellite System antenna and cables

State Make and Model:

Teledyne integrated INS Type 30 (Applanix Oceanmaster)

3. 1 EA Each \$ 12,218.00  
**TRIMBLE-APPLANIX POSPAC MOBILE MAPPING SUITE SMARTBASE SOFTWARE  
LICENSE AND ONE (1) YEAR LICENSE MAINTENANCE**

State Make and Model:

Applanix POSPac SmartBase

4. 1 LOT Lot \$ 6,500.00  
**LABOR, HARDWARE AND SOFTWARE INSTALLATION AND TRAINING, INCLUDING  
ENGINEER EXPENSES**

## BIDDER INSTRUCTIONS

**REQUEST FOR QUOTATION BIDDER RESPONSIVENESS.** In order to be responsive, bidders shall complete and return all Quotation documents requested by the Port, including addenda, specifications, drawings and all forms.

It shall be the bidder's responsibility to provide one (1) original and one (1) copy of the completed Quotation documents. The original and all copies shall include all quotation documents requested by the Port, including addenda, specifications, drawings and all forms.

The Purchasing Agent may deem a bidder non-responsive if the bidder fails to provide all Quotation documents requested by the Port at the Quotation closing date and time.

**ADDENDA.** From time to time, the Harbor Department may deem it necessary to issue an addendum(a) to modify or cancel a Bid Request. Such addendum(a) will be available on the Port of Los Angeles internet website – [www.portoflosangeles.org](http://www.portoflosangeles.org) and the Los Angeles Business Assistance Virtual Network website – [www.labavn.org](http://www.labavn.org). It is the responsibility of the bidder to be aware of and respond to any such addendum(a)

## FORMAL REQUEST FOR BID

CITY OF LOS ANGELES  
HARBOR DEPARTMENT

BID NO. F-1091  
(SHOW THIS NUMBER ON ENVELOPE)

before the deadline of the applicable bid request. Failure to do so may deem the bid non-responsive.

**BID SUBMITTAL TIMELINESS.** Bidders solely are responsible for the timeliness of their submittals. As such, bidders are cautioned to budget adequate time to ensure that their bids are delivered at the location designated at or before the deadline set forth above. Bidders are cautioned that matters including, but not limited to, traffic congestion, security measures and/or events in or around the Harbor Department, may lengthen the amount of time necessary to deliver the bid, whether the bid is submitted in person or by mail.

**AWARD.** The Harbor Department reserves the right to reject any or all Bids, award Bid as a whole, split award or delete line items as it may deem necessary, unless otherwise stated herein.

### **SUPPLIER CONTACT INFORMATION**

Contact Person: Josh Grava

Title: Vice President

Telephone No.: 805-570-1728

Fax No.: \_\_\_\_\_

E-Mail Address: josh.grava@seafloorsystems.com

24 Hour Contact No.: 805-570-1728

### **CONTRACTUAL TERMS**

**AUTHORIZED DISTRIBUTOR/DEALER.** Bidder must indicate if it is an authorized factory distributor/dealer for the manufacturer being quoted (please initial).

Yes: YES  No: \_\_\_\_\_

If bidder is not an authorized distributor/dealer, the bidder shall submit with its Quotation a formal Letter of Certification from the manufacturer, stating that the manufacturer will honor any warranty claims by the City for equipment, parts, and/or materials provided by the bidder.

The manufacturer will be responsible for any default of the supplier that is not corrected by the supplier in a timely and efficient manner. This responsibility includes replacing incorrect or defective parts, trouble shooting, and correcting problems that are traceable to the manufacturer.

**ADDITIONAL QUANTITIES.** The Harbor Department requests the option to purchase additional quantities of above item(s) at the same prices, terms and conditions, providing that the total of any of the additional quantities does not exceed the total for that item, and providing that the Harbor Department

# FORMAL REQUEST FOR BID

CITY OF LOS ANGELES  
HARBOR DEPARTMENT

BID NO. F-1091  
(SHOW THIS NUMBER ON ENVELOPE)

exercise the option before: Dec 31, 2020.

**NEW AND UNUSED.** The equipment furnished shall be new and unused, current model.

**WARRANTY.** Terms of warranty on equipment offered. Free PARTS & SERVICE (LABOR) for defective parts and workmanship for the following period after equipment has been accepted:  
3 years

## MATERIAL, EQUIPMENT, SERVICE

**MAKES, MODELS & BRAND NAMES.** Makes, Models & Brand Names referenced are for illustrative or descriptive purposes only, and are not intended to be restrictive to any particular product. If bidder proposes to furnish another product equal in quality and purpose, such bids will be considered as long as they materially comply with the specifications. Alternate Make, Model, Brand Names, and/or Catalog Number(s) must be indicated opposite each item in the space provided.

The specified Make, Model, and Brand Name must be furnished unless otherwise specified by bidder.

**ILLUSTRATIVE AND TECHNICAL DATA.** When quoting other than the specified brand or when no brand is indicated, Bidder must submit with bid, complete illustrative and technical data on materials or equipment proposed to be furnished. Failure to furnish such data may void bid.

**SPECIFICATION CHANGES.** If provisions of the Specifications preclude bidder from submitting bid, the bidder may request in writing that the specifications be modified. Such request must be received by the Purchasing Officer at least five (5) working days before bid opening date. All bidders will be notified by Addendum of any approved changes in the specifications.

**DEVIATION FROM SPECIFICATIONS.** Specifications contained herein are to describe the construction, design, size, and quality of the desired product and are not intended to be restrictive to any particular product. If bidder proposes to furnish another product equal in quality and purpose, such bids will be considered as long as they materially comply with the specifications. Each deviation from the specifications must be stated in a letter, attached to bidder's submittal. Failure to do so may void bid.

## INSURANCE REQUIREMENTS

### Indemnification

Except for the sole negligence or willful misconduct of the City, or any of its Boards, Officers, Agents, Employees, Assigns and Successors in Interest, Vendor undertakes and agrees to defend, indemnify and hold harmless the City and any of its Boards, Officers, Agents, Employees, Assigns, and Successors in Interest from and against all suits and causes of action, claims, losses, demands and expenses, including, but not limited to, attorney's fees (both in house and outside counsel) and cost of litigation (including all actual litigation costs incurred by the City, including but not limited to, costs of

# FORMAL REQUEST FOR BID

**CITY OF LOS ANGELES  
HARBOR DEPARTMENT**

**BID NO. F-1091**

(SHOW THIS NUMBER ON ENVELOPE)

experts and consultants), damages or liability of any nature whatsoever, for death or injury to any person, including Vendor's employees and agents, or damage or destruction of any property of either party hereto or of third parties, arising in any manner by reason of the negligent acts, errors, omissions or willful misconduct incident to the performance of this Purchase Order by Vendor or its subcontractors of any tier. Rights and remedies available to the City under this provision are cumulative of those provided for elsewhere in this Purchase Order and those allowed under the laws of the United States, the State of California, and the City.

## Acceptable Evidence and Approval of Insurance

Electronic submission is the required method of submitting Vendor's insurance documents. KwikComply is the City's online insurance compliance system, designed to be used primarily by insurance brokers and agents as they submit client insurance certificates directly to the City. It uses the standard insurance industry form known as the ACORD 25 Certificate of Liability Insurance in electronic format. The advantages of KwikComply include standardized, universally accepted forms, paperless approval transactions (24 hours, 7 days per week), and security checks and balances. Vendor's insurance broker or agent shall obtain access to KwikComply at <https://kwikcomply.org/> and follow the instructions to register and submit the appropriate proof of insurance on Vendor's behalf.

## Policy Copies

Upon request by City, Vendor must furnish copy of binder of insurance and/or full certified policy of any insurance policy required herein. Such request may occur outside of termination and/or expiration date of this contract.

## PRIMARY COVERAGE

The coverages submitted must be primary with respect to any insurance or self insurance of the City of Los Angeles Harbor Department. The City of Los Angeles Harbor Department's program shall be excess of this insurance and non-contributing.

If the Vendor maintains higher limits than the minimums shown below, the City requires and shall be entitled to coverage for the higher limits maintained by the Vendor. Any available insurance proceeds in excess of the specified minimum limits of insurance and coverage shall be available to the City.

## ADDITIONAL INSURED

The City of Los Angeles Harbor Department, its officers, agents, and employees must be included as additional insureds in applicable liability policies to cover the City of Los Angeles Harbor Department's vicarious liability for the acts or omissions of the named insured. Such coverage is not expected to respond to the active negligence of the City of Los Angeles Harbor Department.

## NOTICE OF CANCELLATION

By terms of the contract, the contracting company agrees to maintain all required insurance in full force for the duration of the contractor's business with the City of Los Angeles Harbor Department. Each contractually required insurance policy shall provide that it will not be canceled or reduced in coverage until after the Board of Harbor Commissioners, Attention: Risk Manager and the City Attorney of the City of Los Angeles Harbor Department have been given thirty (30) days' prior notice (or 10 days notice of non

## FORMAL REQUEST FOR BID

CITY OF LOS ANGELES  
HARBOR DEPARTMENT

BID NO. F-1091

(SHOW THIS NUMBER ON ENVELOPE)

payment of premium) by registered mail addressed to 425 S. Palos Verdes Street, San Pedro, California 90731.

### RENEWAL

When an existing policy is timely renewed, you are encouraged to submit your renewal policy as soon as it is available to KwlkComply. All renewals must continue to meet the policy conditions listed above. As a courtesy, Risk Management sends notifications of expiring or expired insurance. However, it is the responsibility of the contracting company to ensure evidence of insurance remains effective for the duration of the contract.

For further clarification on Insurance procedures, coverage information and documentation please go to <http://www.portoflosangeles.org/business/risk.asp>.

Vendor will be required to furnish, at its own expense and within TEN (10) days of notification of pending award, proof of insurance, in accordance with the types and in the minimum limits shown below:

### NOTE

**FAILURE TO SUBMIT PROOF OF INSURANCE WITHIN (10) DAYS UPON RECEIPT OF NOTICE OF INTENT TO AWARD WILL DEEM THE BIDDER NON- RESPONSIVE AND THE PROSPECTIVE AWARD MAY BE CANCELLED.**

### General Liability Insurance

Vendor shall procure and maintain in effect throughout the term of this Purchase Order, without requiring additional compensation from the City, commercial general liability insurance covering personal and advertising injury, bodily injury, and property damage providing contractual liability, independent contractors, products and completed operations, and premises/operations coverage written by an insurance company authorized to do business in the State of California rated VII, A- or better in Best's Insurance Guide (or an alternate guide acceptable to City if Best's is not available) within Vendor's normal limits of liability but not less than ONE MILLION Dollars (\$1,000,000.00) combined single limit for injury or claim. Said limits shall provide first dollar coverage except that Executive Director may permit a self-insured retention or self-insurance in those cases where, in his or her judgment, such retention or self-insurance is justified by the net worth of Vendor. The retention or self-insurance provided shall provide that any other insurance maintained by the Harbor Department shall be excess of Vendor's insurance and shall not contribute to it. In all cases, regardless of any deductible or retention, said insurance shall contain a defense of suits provision and a severability of interest clause. Additionally, each policy shall include an additional insured endorsement (CG 2010 or equivalent) naming the City of Los Angeles Harbor Department, its officers, agents and employees as Primary additional insureds, a 10-days notice of cancellation for nonpayment of premium, and a 30-days notice of cancellation for any other reasons.

### Auto Liability Insurance

Vendor shall procure and maintain at its expense and keep in force at all times during the term of this Purchase Order, automobile liability insurance written by an insurance company authorized to do business in the State of California rated VII, A- or better in Best's Insurance Guide (or an alternate guide acceptable to City if Best's is not available) within Consultant's normal limits of liability but not less than

## FORMAL REQUEST FOR BID

CITY OF LOS ANGELES  
HARBOR DEPARTMENT

BID NO. F-1091  
(SHOW THIS NUMBER ON ENVELOPE)

ONE MILLION Dollars (\$1,000,000.00) covering damages, injuries or death resulting from each accident or claim arising out of any one claim or accident. Said insurance shall protect against claims arising from actions or operations of the insured, or by its employees. Coverage shall contain a defense of suits provision and a severability of interest clause. Additionally, each policy shall include an additional insured endorsement (CG 2010 or equivalent) naming the City of Los Angeles Harbor Department, its officers, agents and employees as Primary additional insureds, a 10- days notice of cancellation for nonpayment of premium, and a 30-days notice of cancellation for any other reasons.

### Workers' Compensation and Employer's Liability

Vendor shall certify that it is aware of the provisions of Section 3700 of the California Labor code which requires every employer to be insured against liability for Workers' Compensation or to undertake self-insurance in accordance with the provisions of that Code, and that Vendor shall comply with such provisions before commencing the performance of the tasks under this Purchase Order. Coverage for claims under U.S. Longshore and Harbor Workers' Compensation Act, if required under applicable law, shall be included. Vendor shall submit Workers' Compensation policies whether underwritten by the state insurance fund or private carrier, which provide that the public or private carrier waives its right of subrogation against the City in any circumstance in which it is alleged that actions or omissions of the City contributed to the accident. Such Worker's Compensation and occupational disease requirements shall include coverage for all employees of Vendor, and for all employees of any subcontractor or other vendor retained by Vendor.

 **INITIAL HERE ACKNOWLEDGING INSURANCE REQUIREMENTS:**

(initial)

Upon approval of insurance, contractor will receive written authorization to proceed.

### NO WORK MAY BE PERFORMED WITHOUT SUCH WRITTEN AUTHORIZATION TO PROCEED

**SAFETY AND HEALTH REQUIREMENTS.** All equipment, materials, procedures and services furnished and/or used by the Contractor shall comply with applicable current requirements of OSHA and CAL-OSHA. Contractor agrees to indemnify and hold harmless Los Angeles City, The Harbor Department, and agents, officers and employees thereof, for all damages assessed against them as a result of Contractor's failure to comply with said safety and health requirements.

**SAFETY APPROVAL.** Electrical items listed herein shall have UNDERWRITER'S LABORATORY OR LOS ANGELES CITY ELECTRICAL TESTING LABORATORY approval and meet all current OSHA and CAL-OSHA requirements, where applicable.

**CARE AND CUSTODY.** The contractor accepts full responsibility for the security against loss or damage to the equipment involved while in his\her possession or the possession of any of his\her agents. Contractor shall reimburse the Harbor Department for any loss or damage to Harbor Department equipment in his\her possession or the possession of any of his\her agents.

**INSPECTION RESPONSIBILITY.** Bidder submittal constitutes acknowledgment of inspection of the work

# FORMAL REQUEST FOR BID

CITY OF LOS ANGELES  
HARBOR DEPARTMENT

BID NO. F-1091  
(SHOW THIS NUMBER ON ENVELOPE)

site to bidder's satisfaction, including, but not limited to site conditions and specification requirements.

**REMOVAL, CLEANUP, AND DEMOBILIZATION.** Upon completion of the Contracted Work, the CONTRACTOR shall remove all of its tools, materials and other articles from the property of the CITY. Should the CONTRACTOR fail to take prompt action to this end, the CITY, at its option and without waiver of such other rights as it may have, upon thirty (30) calendar days' notice, may treat such items as abandoned property. The CONTRACTOR shall also sweep all floors broom clean, clean all exterior and interior surfaces and windows and remove all rubbish and debris resulting from the Contracted Work and shall maintain the Jobsite in a clean, orderly and safe condition at all times until completion of the physical.

Throughout all phases of construction, including suspension of work, and until the Final Acceptance, the CONTRACTOR shall keep the site clean and free from rubbish and debris. The CONTRACTOR shall also abate dust nuisance by cleaning, sweeping and sprinkling with water, or other means as necessary. The use of water resulting in mud on public streets will not be permitted as a substitute for sweeping or other methods.

Materials and equipment shall be removed from the site as soon as they are no longer necessary. Before the final inspection, the site shall be cleared of equipment, unused materials and rubbish so as to present a satisfactory clean and neat appearance. All cleanup costs shall be included in the CONTRACTOR'S Bid.

Failure of the CONTRACTOR to comply with the City of Los Angeles Harbor Department Project Manager (PM) cleanup orders may result in an order to suspend work until the condition is corrected. No additional compensation will be allowed as a result of such suspension.

## DELIVERY

**DELIVERY.** Delivery and installation is requested within thirty (30) days after vendor receives order. If this time cannot be met, show in the space provided on the Bid Sheet the best delivery time you can guarantee. The Harbor Department reserves the right to make award based on delivery time quoted.

**NOTIFICATION.** The vendor shall notify Jamil Fernandez, Los Angeles Harbor Department Construction Division, at (310) 732-3530, not less than three (3) days in advance that the material/equipment is ready for delivery.

**DELIVERY POINT.** Prices to include all delivery charges, F.O.B. Port of Los Angeles, Port Pilots Station, Berth 68, Admiral Higby Way, San Pedro, CA 90733.

## FINANCIAL TERMS

**BILLING DISCOUNT TERMS.** Billing Discount terms offering 20 days or more will be considered in making evaluation for award.

## FORMAL REQUEST FOR BID

CITY OF LOS ANGELES  
HARBOR DEPARTMENT

BID NO. F-1091  
(SHOW THIS NUMBER ON ENVELOPE)

**SALES TAXES.** Do not include Sales Taxes in your Bid. Sales Taxes will be added at time of order.

**SALES TAX PERMIT.** Vendor's California State Board of Equalization Permit No. required to collect California State Sales Tax. Permit Number: \_\_\_\_\_.

**FEDERAL EXCISE TAX.** The City of Los Angeles Harbor Department is exempt from payment of Federal Excise Taxes, and will furnish vendor with a Tax Exemption Certificate. **PRICING NOT TO INCLUDE ANY FEDERAL EXCISE TAX.**

**VENDOR PAYMENT.** Please note: Vendor name and address must be submitted exactly as it will appear on the invoice. If invoice remit to (remittance) name and address are different from the bid name and address, please indicate:

REMIT TO: NAME: Seafloor Systems  
ADDRESS: 4415 Commodity Way, Shingle Springs, CA 95682

Invoices submitted for payment where the invoice name and address does not match the name as it appears on the purchase order or as indicated in the space above, will not be processed and will be returned to the vendor.

**TIME AND MATERIALS WITH NO FIXED FEE.** All invoices with payments for time and materials must be supported by time sheets.

**NOTE:** Those invoices with fixed fee rates do not require time sheets.

**BUSINESS TAX REGISTRATION CERTIFICATE (BTRC).** In accordance with the City of Los Angeles Municipal Code, a Business Tax Registration Certificate may be required of persons engaged in business activity within the City. The Office of Finance, Tax and Permit Division, (844) 663-4411, has sole authority in determining a firm's tax requirements and in issuing Business Tax Registration Certificates or Business Tax Exemption Numbers. Accordingly, firm's current Business Tax Registration Certificate or Business Tax Exemption Number must be clearly shown on all invoices submitted for payment. Bidder, in submitting this bid, acknowledges and accepts the above requirements and recognizes that no invoice will be processed for payment without inclusion of the Business Tax Registration Certificate or Business Tax Exemption Number. BTRC/BTRC Exemption Number: \_\_\_\_\_.

**TAXPAYER IDENTIFICATION NUMBER.** Contractor declares that it has an authorized Taxpayer Identification Number (TIN), which must be indicated on all invoices. No payments will be made under this agreement without a valid TIN number.

SELECTED BIDDER SHALL PROVIDE A COPY OF THE COMPANY'S W-9 FORM.

### GENERAL RULES AND REGULATIONS

**LOCAL BUSINESS PREFERENCE PROGRAM.** The Harbor Department is committed to maximizing opportunities for local and regional businesses, as well as encouraging local and regional businesses to locate and operate within the Southern California region. It is the policy of the Harbor Department to

# FORMAL REQUEST FOR BID

CITY OF LOS ANGELES  
HARBOR DEPARTMENT

BID NO. F-1091  
(SHOW THIS NUMBER ON ENVELOPE)

support an increase in local and regional jobs. The Harbor Department's Local Business Preference Program (LBPP) aims to benefit the Southern California region by increasing jobs and expenditures within the local and regional private sector.

Vendors who qualify as a Local Business Enterprise (LBE) will receive an 8% preference on any bid for goods, materials, supplies, and related services valued in excess of \$150,000. The preference will be applied by calculating the bidder's price at 8% less than the quoted price. The Harbor Department will use the applied preference for bid tabulation only. Actual amount paid to the lowest bidder will be the price quoted by the lowest bidder meeting specifications.

The Harbor Department defines a LBE as:

- (a) A business headquartered within Los Angeles, Orange, Riverside, San Bernardino, or Ventura Counties. Headquartered shall mean that the business physically conducts and manages all of its operations from a location in the above-named counties; or
- (b) A business that has at least 50 full-time employees, or 25 full-time employees for specialty marine contracting firms, working in Los Angeles, Orange, Riverside, San Bernardino, or Ventura Counties.

In order for Harbor Department staff to determine the appropriate LBE preference, Bidder shall complete, sign, notarize and submit the attached Affidavit and Bidder Description Form. The Affidavit and Bidder Description Form will signify the LBE status of the Bidder and subcontractors.

In the event of Bidder's noncompliance during the performance of the Contract, Bidder shall be considered in material breach of contract. In addition to any other remedy available to City under this Contract or by operation of law, the City may withhold invoice payments to Bidder until noncompliance is corrected, and assess the costs of City's audit of books and records of Bidder and its subcontractors. In the event the Bidder falsifies or misrepresents information contained in any form or other willful noncompliance as determined by City, City may disqualify the Bidder from participation in City contracts for a period of up to five (5) years.

**MINORITY, WOMEN, AND OTHER BUSINESS ENTERPRISE (MBE/WBE/OBE).** It is the policy of the Los Angeles Harbor Department to provide minority (MBE), women (WBE) and all other (OBE) business enterprises an equal opportunity to participate in the performance of all Harbor Department contracts. Such opportunities have resulted in combined M/WBE participation of over 20%. Bidders are encouraged to continue assisting the Department in implementing this policy by taking all reasonable steps to ensure that all available business enterprises have an equal opportunity to compete for and participate in Department contracts. All bidders are encouraged to reach out to M/W/OBEs when opportunities are available.

**EQUAL BENEFITS POLICY.** The Board of Harbor Commissioner of the City of Los Angeles adopted Resolution No. 6328 on January 12, 2005, agreeing to adopt the provisions of Los Angeles City Ordinance 172,908, as amended, relating to Equal Benefits (Section 10.8.2 et seq. of the Los Angeles Administrative Code) as a policy of the Harbor Department. Bidder shall comply with the policy whenever applicable. Violation of the policy shall entitle the City to terminate any agreement with Bidder and pursue any or all other legal remedies that may be available.

# FORMAL REQUEST FOR BID

CITY OF LOS ANGELES  
HARBOR DEPARTMENT

BID NO. F-1091  
(SHOW THIS NUMBER ON ENVELOPE)

**STORM WATER POLLUTION PREVENTION PLAN, SWPPP.** All work performed under any resulting contract within the Port of Los Angeles, as applicable, must be in accordance with the California Storm Water Best Management Practices (BMP) Handbooks. These practices prohibit the placement of any waste material resulting from the contractor's performance of work into the storm drain system as required by the City of Los Angeles Storm Water Pollution Prevention Plan (SWPPP) for Public Agency Activities.

A copy of the BMP Handbooks for 1) Construction 2) Industrial/Commercial and 3) Municipal Activities are available for review in the office of the Director of Environmental Management, 222 W. Sixth Street, 9<sup>th</sup> Floor, Topaz Building, San Pedro, California 90731.

## **ENVIRONMENTAL MANAGEMENT SYSTEM**

The Los Angeles Harbor Department (Port) is committed to managing resources and conducting Port development and operations in both an environmentally and fiscally responsible manner. The Port will strive to improve the quality of life and minimize the impacts of its development and operations on the environment and surrounding communities through the continuous improvement of its environmental performance and the implementation of pollution prevention measures, in a feasible and cost effective manner that is consistent with the Port's overall mission and goals, as well as with those of its customers and the community. To ensure this policy is successfully implemented the Port will develop an environmental management program that will:

1. Ensure this environmental policy is communicated to Port staff, its customers, and the community;
2. Ensure compliance with all applicable environmental laws and regulations;
3. Ensure environmental considerations are included in planning, property, financial, developmental, and operational decisions, including feasible and cost effective options for exceeding applicable requirements;
4. Define and establish environmental objectives, targets, and best management practices and monitor performance;
5. Ensure the Port maintains a Customer Outreach Program to address common environmental issues; and
6. Fulfill the responsibilities of each generation as trustee of the environment for succeeding generations through environmental awareness and communication with employees, customers, regulatory agencies, and neighboring communities.

The Port is committed to the spirit and intent of this policy and the laws, rules and regulations, which give it foundation.

**COMPLIANCE WITH LAWS.** Vendor shall comply with all applicable Ordinances, laws, Rules and Regulations of the City and of any County, State or Federal Government, or subdivision thereof. This applies even though such requirements may not be specifically mentioned in the Specifications or shown on the Plans.

**DEFAULT BY SUPPLIER.** In case of default by Vendor, the City reserves the right to procure the articles or services from other sources and to hold the vendor responsible for any excess costs occasioned to the City thereby.

## FORMAL REQUEST FOR BID

CITY OF LOS ANGELES  
HARBOR DEPARTMENT

BID NO. F-1091  
(SHOW THIS NUMBER ON ENVELOPE)

**TECHNICAL CORRECTIONS.** The Executive Director or designee is authorized to make minor technical corrections or clarifications in order to effectuate the intent of this contract/bid.

**SPECIAL NOTE.** If you are not bidding, please state reason for not bidding and return bid to the Purchasing Office:

---

---

# FORMAL REQUEST FOR BID

CITY OF LOS ANGELES  
HARBOR DEPARTMENT

BID NO. F-1091  
(SHOW THIS NUMBER ON ENVELOPE)

## GENERAL CONDITIONS READ CAREFULLY

1. **FORM OF BID AND SIGNATURE.** The Bid must be made on this form only, and is limited to the Terms and Conditions contained herein, unless expressly agreed otherwise in writing by the City. No telephonic, facsimile, or electronic bid is acceptable, unless otherwise indicated. Bid should be enclosed in a sealed envelope, showing the Bid No. in the lower left corner, and addressed to the Port of Los Angeles Contracts and Purchasing Division, 500 Pier "A" Street, Wilmington, CA 90744. Bids must be signed with the firm's corporate name or DBA and by a responsible officer or authorized employee. In case of error in extension of prices, unit price will govern. All prices must be firm unless the specification provides for adjustment.
2. **TAXES:** Do not include any Sales or Federal Excise Tax in prices unless the specifications specifically require that they be included. Sales tax will be added by the City at time of award. The City will furnish Federal Excise Tax Exemption Certificate to Supplier. Any other taxes must be included in bid prices.
3. **SPECIFICATION CHANGES.** Vendor may request in writing that specifications be modified if its provisions restrict vendor from bidding. Such request must be received by the Director of Purchasing at least five (5) working days before bid opening date. All vendors will be notified by Addendum of any approved changes in the specifications.
4. **BRAND NAMES AND SPECIFICATIONS.** The detailed specifications and/or brand name references are descriptive and indicate quality, design, and construction of items required. Offers will be considered to supply articles substantially the same as those described therein but with minor variations. Vendor must describe variations in their Bid.
5. **AWARD OF CONTRACT.** Bid shall be subject to acceptance by the City for a period of three (3) months unless a lesser period is prescribed in the quotation by the vendor. The City may make combined award of all items complete to one vendor or may award separate items to various vendors. Vendors may submit alternate prices, a lump sum or a discount conditional on receiving an award for two or more items. The right is reserved to reject any, or all, bids and to waive informality in bids.
6. **PURCHASE AGREEMENT.** A copy of the Bid, Specifications and General Conditions will remain on file in the Purchasing Office. All material or services supplied by the Contractor shall conform to the applicable requirements of the City Charter, City Ordinances, and all applicable State and Federal Laws, as well as conforming to the Specifications, Terms and Conditions contained herein.
7. **PRICE GUARANTEE.** If during the term of any agreement awarded pursuant to this Bid, the supplier sells the same materials or services under similar quantity and delivery conditions, at prices below those stated herein, such lower prices are to immediately be extended to the City.
8. **DEFAULT BY SUPPLIER.** In case of default by supplier, the City reserves the right to procure the articles or services from other sources and to hold the supplier responsible for any excess costs incurred by the City.
9. **DELIVERY:** If delivery of the commodity or service cannot be made exactly as specified and at the price shown, notify the Director of Contracts and Purchasing immediately. Do not make delivery without his approval. Any correspondence, other than invoices, relating to this order must be sent to the Director of Contracts and Purchasing.
10. **INSPECTION:** All materials furnished on this order will be subject to test and inspection and, if rejected, will be held subject to order of shipper and subject to accrued charges.
11. **INVOICING:** The point of free delivery, terms, contract number, name and address of department must appear on all invoices.

All materials must be marked and tagged with the Contract number and be accompanied by packing list in detail. Material must be packed and shipped in conformity with tariff or classification requirements.

Prices on the contract include delivery to the division within building unless otherwise specified on the contract.

Prepaid charges for transportation must be accompanied by original expense bill marked paid and is not subject to transportation tax, due to the exemption permitted municipalities as indicated.

Materials shall be listed separately on invoices covering repairs or installation service.

The Harbor Department will not be responsible for services, materials, or supplies furnished without prior authorization from the Director of Contracts and Purchasing.

This contract must not be assigned or transferred to anyone without the written approval of the Director of Contracts and Purchasing.

Discount period to be computed from date of receipt of invoice, or complete acceptance of goods or services, whichever is the later date.

In case of delay of payment beyond 30 days after acceptance of goods or services or date of invoice, whichever is later, please write the Harbor Department Accounting Section giving the contract number, stating to which division and on what date delivery was made.

Harbor Department may pay on partial deliveries, but right is reserved by the Director of Contracts and Purchasing to require complete delivery before payment.

12. **TIME AND MATERIALS WITH NO FIXED FEES:** ALL INVOICES WITH PAYMENTS FOR TIME AND MATERIALS MUST BE SUPPORTED / BACKED UP BY TIME SHEETS.  
  
NOTE: THOSE INVOICES WITH FIXED FEE RATES DO NOT REQUIRE TIME SHEETS.
13. **CITY OF LOS ANGELES MUNICIPAL CODE:** All items must meet the requirements of the City of Los Angeles Municipal Code.
14. **PAYMENTS.** Payment terms are NET 30 days unless vendor quotes otherwise. Cash discounts allowing less than 20 days or 20th Proxima will not be considered by the City when evaluating Bids. All Cash Discounts are computed from the date of delivery in full or completion and acceptance of the work or material, or from date of receipt of invoice, whichever is latest. Partial payments may be made by the City on delivery and acceptance of goods and on receipt of vendor's invoice. Invoices must be submitted as specified on the Purchase Order or Notice to Proceed.
15. **ASSIGNMENT.** The supplier shall not assign or transfer by operation of law any obligation without the prior written consent of the Director of Contracts and Purchasing.
16. **NONDISCRIMINATION.** During the performance of this contract, the contractor shall not discriminate in employment practices against any employee or applicant for employment because of the employee's race, religion, national origin, ancestry, sex, sexual orientation, age, disability, marital status, domestic partner status or medical condition, in accordance with L.A. Admin. Code Sections 10.8 to 10.13, whose provisions are incorporated herein. All subcontracts awarded under any such contract shall contain a like nondiscrimination provision.
17. **SAFETY APPROVAL.** Articles supplied under this contract will not be accepted unless they comply with current safety regulations of the City Department of Building and Safety, U.L., the Safety Orders of the California Division of Occupation Safety and Health (CalOSHA) and OSHA requirements.
18. **PREVAILING WAGES.** Where labor is required for public work as a part of this contract, pursuant to the provisions of the Labor Code of the State of California, contractor shall pay no less than the general prevailing wages for the area as determined by the Director of the Department of Industrial Relations, State of California. Copy of wage schedule is obtainable from the Office of the Board of Public Works, City Hall, Los Angeles.
19. **CONTRACTOR'S LIABILITY.** The contractor agrees to, at all times, relieve, protect, save harmless, and fully indemnify the City of Los Angeles, its officers, agents and employees from any and all liability whatsoever that may arise or be claimed by reason of any acts of said contractor, contractor's employees and agents, in connection with the work to be performed under the contract.
20. **PATENT RIGHTS.** The person, firm, or corporation, upon whom this order is drawn, does, in case the materials or supplies to be furnished are covered wholly or in part by U.S. Letters Patent, by the acceptance of this order agrees to indemnify and hold the

# FORMAL REQUEST FOR BID

**CITY OF LOS ANGELES  
HARBOR DEPARTMENT**

**BID NO. F-1091**  
(SHOW THIS NUMBER ON ENVELOPE)

City of Los Angeles harmless from any and all injuries or damage which the City may sustain by reason of the sale to or use by it of such materials or supplies and arising out of the alleged or actual infringement of said letters patent.

21. **LEGAL JUSTIFICATION.** This agreement shall be deemed entered into in Los Angeles, California, and shall be governed and construed in accordance with the laws of the State of California.
22. **TERMINATION FOR NON-APPROPRIATION.** The Harbor Department of the City of Los Angeles' (City's) obligation to pay any amount hereunder, for any City fiscal year purpose. The City's fiscal year ends on June 30<sup>th</sup> of each calendar year. Accordingly, anything to the contrary notwithstanding, the City may terminate this contract and future monetary obligations hereunder as of the end of any fiscal year.
23. **CANCELLATION.** The contract may be terminated in whole or in part by the Harbor Department of the City of Los Angeles (City) for its convenience, without penalty, provided that the Vendor is given not less than 30 days written notice (delivered by certified mail, return receipt requested) of the intent to terminate. The City will pay for that portion of the orders fulfilled or work performed. The City has the right to cancel the contract for cause at any time.

THE END

No. 285 Rev. 07/15-116



# Quotation # 002420-200818- Q05336-SeaBat T20-INS30R

**SUBMITTED TO:**

Port of Los Angeles - Harbor Department  
Leticia Caldera

Purchasing Office, 1st Floor  
500 Pier Street  
Wilmington  
CA, 90744

Date: 08-18-2020

**SUBMITTED BY:**

Seafloor Systems, Inc.  
Josh Grava

4415 Commodity Way  
Shingle Springs, CA 95682  
805-570-1728

josh.grava@seafloorsystems.com

ItemNumber	Description	ListPrice	ItemPrice	Quantity	Total
SeaBat T20-R	SeaBat T20-R broadband multibeam echosounder, 190-420kHz, 1.0 deg beams at 400kHz, 165deg swath, 10-1024 beams, 2u standard 19inch rack-mount processor, 10m cables, 3 Year Warranty	\$ 83,000.00	\$ 83,000.00	1	\$ 83,000.00
Micro X	AML Sea surface Micro X Probe package, 6000m, 10m cable, with mounting bracket for SeaBat	\$ 4,885.00	\$ 4,885.00	1	\$ 4,885.00
EM7219/TC2181	T20 Fairing (Fairing Add-on, Mounting Bracket Standard, T20,EM7219/TC2181)	\$ 670.00	\$ 670.00	1	\$ 670.00
Mounting Bracket	Standard SeaBat T20-R Mounting bracket	\$ 0.00	\$ 0.00	1	\$ 0.00
Flex Mode	SeaBat- License - Flex Mode	\$ 0.00	\$ 0.00	1	\$ 0.00
MultiDetect	SeaBat- License - MultiDetect	\$ 0.00	\$ 0.00	1	\$ 0.00
Normalized Backscatter	SeaBat- License - Normalized Backscatter	\$ 0.00	\$ 0.00	1	\$ 0.00
Integrated INS Type-30	Integrated INS Type-30 (Applanix RTK Oceamaster for SeaBat T50-R/T20-R. Topside PCS board-set is integrated in the SeaBat processor, GNSS cables plug directly into the processor. IP68 IMU housing mounts on SeaBat sonar head. 25m IMU cable, 2 x 40m GNSS cables. Pitch and Roll: 0.02° DGPS / 0.01° RTK Heave: 5cm or 5% / 2cm or 2% with True heave Heading: 0.02° (2m baseline) / 0.01° (4m baseline)	\$ 76,500.00	\$ 76,500.00	1	\$ 76,500.00
PPSMTB1M	Applanix POSPac MMS 8 SmartBase GNSS Aided Inertial Processing Tools for generation of post-processed GNSS-Aided Inertial Navigation Solution for installation on PC under Windows 7, 8 or 10 (Floating License). Includes First Year Maintenance	\$ 12,218.00	\$ 12,218.00	1	\$ 12,218.00
Training	3 day onsite installation, integration, and training course. Includes travel days and expenses.	\$ 6,500.00	\$ 6,500.00	1	\$ 6,500.00
Shipping	Included	\$ 0.00	\$ 0.00	1	\$ 0.00

Sub Total: \$ 183,773.00

Tax: \$ 0.00

**Total: \$ 183,773.00**

This is a quotation on the goods named, subject to the conditions noted below:

1. All prices are in US Dollars
2. Unless otherwise stated, Seafloor Systems Standard Terms and Conditions apply – <http://seafloorsystems.com/support/forms>
3. Seafloor Systems products carry a 12-month Limited Factory Warranty covering any defects in material or workmanship under normal use. Damages occurring from mishandling or misuse are the customer's responsibility.
4. 3<sup>rd</sup> Party Equipment – individual Manufacturer's standard warranty terms apply
5. Any additional costs incurred by Seafloor Systems that are the responsibility of the purchaser will be invoiced at Cost plus 20%
6. Delivery Within: 30 Days ARO
7. FOB: Destination
8. Payment Terms: Net 30
9. Quote Valid For: 30 days
10. Terms can be found at <https://www.seafloorsystems.com/terms-and-conditions>

**Thank you for your business!**

**Notes:**



Teledyne RESON

# SeaBat<sup>®</sup> T20-R

High resolution Multibeam Echosounder with fully integrated Inertial Navigation System



## Superior acoustic quality engineered for the demanding marine environment

The SeaBat T20-R is a new addition to the leading SeaBat product range engineered from the ground up to evolve with your business. Combined with a Rack-mounted Sonar Processor (RSP), SeaBat T20-R provides uncompromised survey data in a highly compact package designed for small vessel use.

The solution includes a range of powerful software features at an attractive price, with the option for future feature expansions to grow with your needs.

The Rack-mounted Sonar Processor comes with an optional industry leading fully integrated Inertial Navigation System for accurate sensor time tagging and motion stabilization.

The SeaBat T20-R is designed for very fast mobilization on any type of survey vessels, securing minimal interfacing and low space requirements.

## SeaBat T20-R Standard configuration

### Rack-mounted Sonar Processor (RSP)

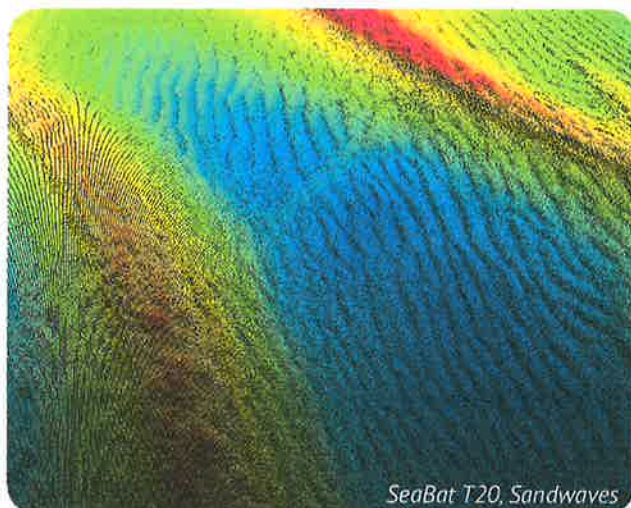
- Single point for all cable connections – for fast mobilization
- Accurate sensor time-tagging and motion stabilization from the optional integrated INS
- 10m cable configuration
- 2U form factor in standard 19" rack

### SeaBat T20 sonar head assembly

- 190 – 420kHz wide-band sonar arrays
- Lightweight sonar bracket
- Robust titanium housing
- Less than 8kg in water

### 3 years warranty

Our hardware is quality-tested to meet the most demanding standards. Backed by the full support of our comprehensive after-sales program and 3 years of warranty, you can be sure that the SeaBat T20-R won't let you down.



## PRODUCT BENEFITS

- All-in-one, fully flexible and fully integrated survey system
- The compact system allows for fast mobilization, minimal interfacing and extremely low space requirements
- Impressively clean and high data quality for faster operational surveys and reduced processing time
- Fully frequency agile from 190 to 420 kHz, allowing for improved swath performance and reduced survey time under challenging conditions
- The new compressed water column data significantly reduces data volume while maintaining the required information



## SEABAT T20-R SYSTEM SPECIFICATIONS

Input voltage	100-230VAC 50/60Hz
Transducer cable length	10m (standard) Optional: 25m, 50m or 100m
Temperature (operational / storage)	Rack-mounted Sonar Processor: -5°C to +45°C / -30°C to +70°C Sonar-wet-end: -2°C to +36°C / -30°C to +70°C

	Height [mm]	width [mm]	depth [mm]	weight [kg/air]	weight [kg/water]
T20 Rx (EM7219)	102.0	254.0	123.0	5.0	4.2
T20 Tx (TC2181)	86.6	93.1	280	5.4	3.4
Rack-mounted Sonar Processor * Standard 19" rack-mount	88 (2U)	478*	462	12.3-13.8	N/A
Teledyne Type 20/30 IMU	123	118	95.6	3.0	1.6

T20 Acoustic performance	400kHz	200kHz
Across-track receiver beam width <sup>1</sup>	1° (center)	2° (center)
Along-track beam width <sup>1</sup>	1°	2°
Number of beams	10 - 512	
Swath coverage (up to)	10°-140° Equi distance, 10°-165° Equi Angle	
Typical Depth (CW <sup>2</sup> )	0.5-150 meters	0.5-375 meters
Max Depth (CW <sup>3</sup> )	250 meters	550 meters
Typical Depth (FM <sup>2</sup> )	0.5-180 meters	0.5-450 meters
Max Depth (FM <sup>3</sup> )	300 meters	575 meters
Ping rate (range dependent)	Up to 50 pings/s	
Pulse length (CW)	15 – 300µs	
Pulse length (FM)	300µs – 10ms	
Depth resolution	6mm	
Depth rating (sonar head)	50 meters	

Teledyne INS Type -20	Roll/Pitch 0.02°	Heading <sup>4</sup> 0.015°	Heave <sup>4</sup> 5cm/5%	TrueHeave 2cm/2%	Optional postprocessing with POSPac MMS.
Teledyne INS Type -30	Roll/Pitch 0.01°	Heading <sup>4</sup> 0.010°	Heave <sup>4</sup> 5cm/5%	TrueHeave 2cm/2%	Optional Fugro MarineStar®.

For relevant tolerances for dimensions above and detailed outlined drawings see Product Description

1 Nominal values

2 This is a depth range within which the system is normally operated, from the minimum depth to a depth value corresponding to the max. swath -50%.

3 This is the single value corresponding to the depth at which the swath is reduced to 10% of its max. value. For actual swath performance refer to Product Description.

4 With 4m GPS base line. Heave 5cm/5% whichever is greater for periods +/- 20sec

5 An extinction coverage of  $\pm 20^\circ$  is observed at about 530 meter water.

## T20-R Scope of supply

## Optional extra features

# POSPAC MMS 8

NOW WITH POST-PROCESSED CENTERPOINT® RTX SERVICE!

POSPac MMS™ (Mobile Mapping Suite) 8 is Applanix' next generation of industry leading GNSS-Aided Inertial post-processing software for georeferencing data collected from cameras, LIDARs, multi-beam sonars and other sensors on mobile platforms.

## NOW WITH TRIMBLE RTX TECHNOLOGY!

Using Trimble® RTX™ technology, POSPac MMS 8 delivers significant new benefits for mobile mapping from land, air, marine and UAV platforms:

- ▶ Achieve centimeter-level accuracy within minutes after data collection with just an internet connection – no need to set up base stations, no need to wait for delivery of public-domain ephemeris data
- ▶ Map inaccessible regions that have no existing Continuously Operating Reference Stations (CORS) without the cost of deploying local base stations
- ▶ Attain more uptime and reliability using Trimble's professionally managed, highly maintained private network
- ▶ Automatically survey in dedicated base stations direct from POSPac - streamline map production workflow

## INDUSTRY LEADING SOFTWARE

"Applanix has a solid track record of delivering new and innovative solutions to its customers to solve their business needs. By integrating the Trimble RTX technology into POSPac MMS we are able to continue this tradition and offer our customers something that is truly unique and promises a whole new level of accuracy and efficiency."

- Joe Hutton, Director of Inertial Technology and Airborne Products at Applanix Corporation.

## ABOUT TRIMBLE RTX

Trimble RTX is a proprietary GPS, GLONASS, BeiDou and QZSS enabled technology that provides high-accuracy GNSS positioning worldwide without the use of traditional local base stations or a VRS network. By combining real-time data from a global reference station infrastructure with innovative positioning and compression algorithms, Trimble RTX technology computes centimeter-level positions based on satellite orbit and clock information.

## POSPAC 8 IMPLEMENTATION

POSPac 8 includes a post-processed implementation of Trimble's premier CenterPoint® RTX service, integrated with Applanix' industry leading IN-Fusion™ GNSS-Aided Inertial processing to provide robust, centimeter level position and orientation information worldwide and without reference stations. The Post-Processed CenterPoint RTX service is available for purchase as a 6 or 12 month subscription.

## YOUR BENEFITS

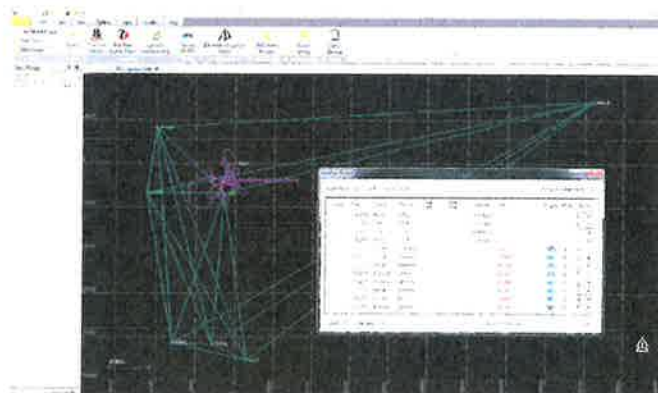
- ▶ Reduced acquisition costs
- ▶ Reduced re-work costs with "know before you go" in field quality control
- ▶ Faster production
- ▶ Better accuracy
- ▶ Increased utilization

## Key Features

- ▶ Post-Processed Trimble CenterPoint RTX trajectory processing (PP-RTX)
- ▶ Automatic base station survey using static PP-RTX
- ▶ "Know before you go" Quality Control licenses for checking GNSS data in the field, ensuring accuracy specifications are met before leaving the project area
- ▶ New floating license support – share a single license across a network or between computers
- ▶ New User Interface
- ▶ 64-bit processing for faster throughput
- ▶ Windows 10 support
- ▶ RTCM 3.2 support
- ▶ SmartBase database update

POSPac MMS 8 is now available worldwide through Applanix sales channels. For more information or to purchase POSPac 8, go to: <http://www.applanix.com/products/pospac-mms.htm>

**POSPac MMS 8**  
CenterPoint RTX Post Processing



# X•Series

Multi-Model Family of Sensor-Exchangeable Instruments

X•Series is a family of sensor-Exchangeable oceanographic instruments that allows you to change an instrument's sensor load in the field and on-demand.

With an X•Series instrument and Xchange™ field-swappable sensor heads, your CTD can become an SVTP, shallow range instruments can be made to go deep, and temperature range can be extended or tightened as needed.

All X•Series instruments share a common architecture, so any sensor head can be attached to nearly any instrument, regardless of size or type: real-time probe, vertical profiler, or in-situ logger.

Total flexibility – of instrument model, of sensor type, and of sensor range – ensures that the right instrument is always available.



## Key Benefits

- **Greater return on investment:** Each instrument can multi-task as CTD, SVTP, and many other configurations at multiple pressure ranges.
- **Reduced downtime:** Recalibrated sensors sent to the instrument means the instrument never leaves the field for recalibration.
- **Right instrument always ready:** Calibrated sensors are shared amongst all X•Series instruments, ensuring that the right instrument is always field-ready.
- **Greater system redundancy:** Mobility of sensor-heads and modularity of instruments minimizes the risk of downtime on the vessel.

Sound Velocity / CTD / Multiparameter  
Biofouling Control / Deployment Systems



		<i>Typical Applications</i>	No. of Ports	Sensor Configuration	Size (dia. x length, mm)	Communications	Internal Logging	Input Voltage (v)	Optional Analog Inputs	Materials	Max Depth (m)	Weight in Air (kg) <sup>6</sup>	Weight in Water (kg) <sup>6</sup>
REAL-TIME	MICRO•X	Sea chest or transducer mount	1	P1, S1	33 x 240 <sup>1</sup>	RS-232, RS-485	N	8-26	n/a	Acetal <sup>5</sup>	500	0.24	0.09
										Titanium	6000	0.39	0.25
	SMART•X	AUV, glider or other vehicle	3	P1S2, P0S3	70 x 420	RS-232, RS-485	N	8-26	n/a	Acetal	500	0.73	0.14
										Titanium	6000	1.86	1.27
	METREC•X	Multi-parameter in-situ or ROV use	5	P2S2, P1S4	100 x 482	RS-232, RS-485	N	8-36 <sup>3</sup>	4	Acetal	500	3.30	1.20
INTERNAL POWER										7075 Alum	6000	5.20	3.10
	METREC•XL	Multi-parameter in-situ or ROV use	9	custom	127 x 541	RS-232, RS-485	N	8-36 <sup>3</sup>	4	Acetal	500	5.20	1.60
	bathy-METREC•X	High accuracy bathymetry with Digiquartz®	5	P2S2, P1S4	100 x 495	RS-232, RS-485	N	8-36 <sup>3</sup>	2	7075 Alum	6000	5.00	3.00
	BASE•X <sub>2</sub>	Shallow water vertical profiling	2	P1S1	69 x 390	WiFi, RS-232, RS-485	Y	9-28 <sup>4</sup>	n/a	Acetal	100 500	1.17	0.49
	MINOS•X	Vertical profiling	3	P1S2, P2S1 P2S1	76 x 597	RS-232, RS-485, WiFi <sup>2</sup>	Y	8-26 <sup>4</sup>	2	Acetal	1000	2.23	0.73
										Titanium	6000 11000	4.67	3.14
	PLUS•X	Multi-parameter vertical profiling or in-situ	5	P2S2, P1S4	100 x 881	RS-232, RS-485, WiFi <sup>2</sup>	Y	8-26 <sup>4</sup>	4	Acetal	500	5.90	2.20
										6061 Alum	5000	7.70	3.40
										7075 Alum	6000	7.70	3.40

## Sensor Configurations

"P" type port is compatible with SV, C, and CT•Xchange™ sensors

"S" type port is compatible with T, P, and Tu•Xchange™ sensors

Numeric value is the quantity of ports of that type

Example: P1S2 = 1 "P" type port and 2 "S" type ports

Standard configurations listed. Inquire for additional options.

## Notes

<sup>1</sup> Overall length varies depending on Xchange™ sensor installed.

<sup>2</sup> When Data•Xchange is attached

<sup>3</sup> 15-36V with select altimeter options

<sup>4</sup> Internally powered via battery with external power capability

<sup>5</sup> Acetal, 500 m Micro•X available in S1 configuration only

<sup>6</sup> Overall weight varies depending on Xchange™ sensors installed.

T +1-250-656-0771

E sales@AMLOceanographic.com

T +1-800-663-8721 (NA)

W www.AMLOceanographic.com

F +1-250-655-3655

2071 Malaview Avenue Sidney, British Columbia Canada, V8L 5X6

800A Unit 6C Windmill Road Dartmouth, Nova Scotia Canada, B3B 1L1





**TELEDYNE MARINE**  
Everywhere you look™

June 20, 2019

**Seafloor Systems**

Teledyne Reson, Inc. is pleased to confirm that Seafloor Systems operates as a Value-added Reseller and authorized distributor for Teledyne Imaging products.

As an authorized distributor, Seafloor Systems may resell products under the terms of their Reseller Agreement.

Please do not hesitate to contact us if you have any questions.

Best regards,

**Scott A. Walters**

Sales Manager – Civil Engineering and Marine Construction

Mobile: +1 832.312.4876

[Scott.walters@Teledyne.com](mailto:Scott.walters@Teledyne.com)

Teledyne Marine

1026 N. Williamson Blvd.

Daytona Beach, FL 32114

[www.teledynemarine.com](http://www.teledynemarine.com)

## Request for Taxpayer Identification Number and Certification

Give Form to the  
requester. Do not  
send to the IRS.

► Go to [www.irs.gov/FormW9](http://www.irs.gov/FormW9) for instructions and the latest information.

1 Name (as shown on your income tax return). Name is required on this line; do not leave this line blank.

Seafloor Systems, Inc.

2 Business name/disregarded entity name, if different from above

3 Check appropriate box for federal tax classification of the person whose name is entered on line 1. Check only one of the following seven boxes.

☐ Individual/sole proprietor or single-member LLC

☐ C Corporation

☒ S Corporation

☐ Partnership

☐ Trust/estate

☐ Limited liability company. Enter the tax classification (C=C corporation, S=S corporation, P=Partnership) ►

Note: Check the appropriate box in the line above for the tax classification of the single-member owner. Do not check LLC if the LLC is classified as a single-member LLC that is disregarded from the owner unless the owner of the LLC is another LLC that is not disregarded from the owner for U.S. federal tax purposes. Otherwise, a single-member LLC that is disregarded from the owner should check the appropriate box for the tax classification of its owner.

☐ Other (see instructions) ►

4 Exemptions (codes apply only to certain entities, not individuals; see instructions on page 3):

Exempt payee code (if any) \_\_\_\_\_

Exemption from FATCA reporting code (if any) \_\_\_\_\_

(Applies to accounts maintained outside the U.S.)

5 Address (number, street, and apt. or suite no.) See instructions.

4415 Commodity Way

6 City, state, and ZIP code

Shingle Springs, CA 95682

7 List account number(s) here (optional)

Requester's name and address (optional)

Print or type.  
See Specific Instructions on page 3.

### Part I Taxpayer Identification Number (TIN)

Enter your TIN in the appropriate box. The TIN provided must match the name given on line 1 to avoid backup withholding. For individuals, this is generally your social security number (SSN). However, for a resident alien, sole proprietor, or disregarded entity, see the instructions for Part I, later. For other entities, it is your employer identification number (EIN). If you do not have a number, see *How to get a TIN*, later.

Note: If the account is in more than one name, see the instructions for line 1. Also see *What Name and Number To Give the Requester* for guidelines on whose number to enter.

Social security number

\_\_\_\_ - \_\_\_\_ - \_\_\_\_

or

Employer identification number

9 3 - 1 2 6 2 3 7 4

### Part II Certification

Under penalties of perjury, I certify that:

1. The number shown on this form is my correct taxpayer identification number (or I am waiting for a number to be issued to me); and
2. I am not subject to backup withholding because: (a) I am exempt from backup withholding, or (b) I have not been notified by the Internal Revenue Service (IRS) that I am subject to backup withholding as a result of a failure to report all interest or dividends, or (c) the IRS has notified me that I am no longer subject to backup withholding; and
3. I am a U.S. citizen or other U.S. person (defined below); and
4. The FATCA code(s) entered on this form (if any) indicating that I am exempt from FATCA reporting is correct.

**Certification instructions.** You must cross out item 2 above if you have been notified by the IRS that you are currently subject to backup withholding because you have failed to report all interest and dividends on your tax return. For real estate transactions, item 2 does not apply. For mortgage interest paid, acquisition or abandonment of secured property, cancellation of debt, contributions to an individual retirement arrangement (IRA), and generally, payments other than interest and dividends, you are not required to sign the certification, but you must provide your correct TIN. See the instructions for Part II, later.

Sign  
Here

Signature of  
U.S. person ►

Date ►

4/5/19

## General Instructions

Section references are to the Internal Revenue Code unless otherwise noted.

**Future developments.** For the latest information about developments related to Form W-9 and its instructions, such as legislation enacted after they were published, go to [www.irs.gov/FormW9](http://www.irs.gov/FormW9).

## Purpose of Form

An individual or entity (Form W-9 requester) who is required to file an information return with the IRS must obtain your correct taxpayer identification number (TIN) which may be your social security number (SSN), individual taxpayer identification number (ITIN), adoption taxpayer identification number (ATIN), or employer identification number (EIN), to report on an information return the amount paid to you, or other amount reportable on an information return. Examples of information returns include, but are not limited to, the following.

- Form 1099-INT (interest earned or paid)

- Form 1099-DIV (dividends, including those from stocks or mutual funds)
- Form 1099-MISC (various types of income, prizes, awards, or gross proceeds)
- Form 1099-B (stock or mutual fund sales and certain other transactions by brokers)
- Form 1099-S (proceeds from real estate transactions)
- Form 1099-K (merchant card and third party network transactions)
- Form 1098 (home mortgage interest), 1098-E (student loan interest), 1098-T (tuition)
- Form 1099-C (canceled debt)
- Form 1099-A (acquisition or abandonment of secured property)

Use Form W-9 only if you are a U.S. person (including a resident alien), to provide your correct TIN.

If you do not return Form W-9 to the requester with a TIN, you might be subject to backup withholding. See What is backup withholding, later.

Prohibited Contributors  
(Bidders)

This form must be completed in its entirety and submitted with your bid or proposal to the City department that is awarding the contract. Failure to submit a completed form may affect your bid or proposal. If you have questions about this form, please contact the Ethics Commission at (213) 978-1960.

☒ Original Filing

☐ Amendment: Date of Signed Original \_\_\_\_\_ Date of Last Amendment \_\_\_\_\_

Reference Number (Bid, Contract, or BAVN): Bid F-1091 Date Bid Submitted: 8/18/20

Contract Description (Title of the RFP or City contract solicitation and description of the services to be provided):

Multi-Beam Sonar

Awarding Authority (Department awarding the contract): Port of Los Angeles - Harbor Dept.

Bidder Name: Seafloor Systems Inc.

Bidder Address: 4415 Commodity Way Shingee Springs CA 95682

Bidder Email Address: josh.grava@seafloorsystems.com Bidder Phone Number: 530-677-1019

## Schedule Summary

Please complete all three of the following:

**1. SCHEDULE A — Bidder's Principals** (check one)

The bidder has one or more **PRINCIPALS**, as defined in LAMC § 49.7.35(A)(6).  
At least one principal is required for entities. (If you check "Yes", Schedule A is required.)

Yes



No


**2. SCHEDULE B — Subcontractors and Their Principals** (check one)

The bidder has one or more **SUBCONTRACTORS** on this bid or proposal with subcontracts worth \$100,000 or more. (If you check "Yes", Schedule B is required.)

Yes



No


**3. TOTAL NUMBER OF PAGES SUBMITTED** (including this cover page): 2

## Certification

I certify the following under penalty of perjury under the laws of the City of Los Angeles and the state of California:

A) I understand, will comply with, and have notified my principals and subcontractors of the requirements and restrictions in Los Angeles City Charter § 470(c)(12) and any related ordinances; B) I understand that I must amend this form within ten business days if any information changes; C) I am the bidder named above or I am authorized to represent the bidder named above, and my name appears below; and D) The information provided in this form is true and complete to the best of my knowledge and belief.

Josh Grava

Name

Vice President

Title

Signature

8/18/20

Date

# Prohibited Contributors (Bidders)

## Schedule A - Bidder's Principals

Please identify the names and titles of all the bidder's principals (attach additional sheets if necessary). Principals include a bidder's board chair, president, chief executive officer, chief operating officer, and individuals who serve in the functional equivalent of one or more of those positions. Principals also include individuals who hold an ownership interest in the bidder of at least 20 percent and employees of the bidder who are authorized by the bid or proposal to represent the bidder before the City.

Name: John Tamplin Title: CEO, President  
Address: 4415 Commodity Way, Shingle Springs CA 95682

Name: \_\_\_\_\_ Title: \_\_\_\_\_  
Address: \_\_\_\_\_

Name: \_\_\_\_\_ Title: \_\_\_\_\_  
Address: \_\_\_\_\_

Name: \_\_\_\_\_ Title: \_\_\_\_\_  
Address: \_\_\_\_\_

Name: \_\_\_\_\_ Title: \_\_\_\_\_  
Address: \_\_\_\_\_

Name: \_\_\_\_\_ Title: \_\_\_\_\_  
Address: \_\_\_\_\_

Name: \_\_\_\_\_ Title: \_\_\_\_\_  
Address: \_\_\_\_\_

Name: \_\_\_\_\_ Title: \_\_\_\_\_  
Address: \_\_\_\_\_

Name: \_\_\_\_\_ Title: \_\_\_\_\_  
Address: \_\_\_\_\_

☐ Check this box if additional Schedule A pages are attached.

## **LOCAL BUSINESS PREFERENCE PROGRAM**

The Harbor Department is committed to maximizing opportunities for local and regional businesses, as well as encouraging local and regional businesses to locate and operate within the Southern California region. It is the policy of the Harbor Department to support an increase in local and regional jobs. The Harbor Department's Local Business Preference Program (LBPP) aims to benefit the Southern California region by increasing jobs and expenditures within the local and regional private sector.

Contractors who qualify as a Local Business Enterprise (LBE) will receive an 8% preference on any bid for goods, materials, supplies, and related services valued in excess of \$150,000. The preference will be applied by calculating the bidder's price at 8% less than the quoted price. The Harbor Department will use the applied preference for bid tabulation only. The actual amount paid to the lowest bidder will be the price quoted by the lowest bidder meeting specifications.

Contractors who do not qualify as a LBE may receive a maximum 5% preference for identifying and utilizing LBE subcontractors. Contractors may receive 1% preference, up to a maximum of 5%, for every 10% of or portion thereof, of work that is subcontracted to a LBE.

The Harbor Department defines a LBE as:

- (a) A business headquartered within Los Angeles, Orange, Riverside, San Bernardino, or Ventura Counties. Headquartered shall mean that the business physically conducts and manages all of its operations from a location in the above-named counties; or
- (b) A business that has at least 50 full-time employees, or 25 full-time employees for specialty marine contracting firms, working in Los Angeles, Orange, Riverside, San Bernardino, or Ventura Counties.

In order for Harbor Department staff to determine the appropriate LBE preference, Vendor shall complete, sign, notarize and submit the attached Affidavit and Contractor Description Form. The Affidavit and Contractor Description Form will signify the LBE status of the Contractor and any subcontractors.

In the event of Contractor's noncompliance during the performance of the Contract, Contractor shall be considered in material breach of contract. In addition to any other remedy available to City under this Contract or by operation of law, the City may withhold invoice payments to Contractor until noncompliance is corrected, and assess the costs of City's audit of books and records of Contractor. In the event the Contractor falsifies or misrepresents information contained in any form or other willful noncompliance as determined by City, City may disqualify the Contractor from participation in City contracts for a period of up to five (5) years.

## AFFIDAVIT OF COMPANY STATUS

"The undersigned declares under penalty of perjury pursuant to the laws of the State of California that the following information is true and correct and includes all material information necessary to identify and explain the operations of

Seafloor Systems Inc.

Name of Firm

as well as the ownership and location thereof. Further, the undersigned agrees to provide complete and accurate information regarding ownership in the named firm, any proposed changes of the ownership and to permit the audit and examination of firm ownership documents in association with this contract."

**Local Business Preference Program:** Please indicate the Local Business Enterprise status of your company. Only one box must be checked:

☐ LBE    ☒ Non-LBE

- A Local Business Enterprise (LBE) is: (a) a business headquartered within Los Angeles, Orange, Riverside, San Bernardino, or Ventura Counties; or (b) a business that has at least 50 full-time employees, or 25 full-time employees for specialty marine contracting firms, working in Los Angeles, Orange, Riverside, San Bernardino, or Ventura Counties. "Headquartered" shall mean that the business physically conducts and manages all of its operations from a location in the above-named counties.
- A Non-LBE is any business that does not meet the definition of a LBE.

Signature: \_\_\_\_\_

Printed Name: \_\_\_\_\_

Josh Grava

Title: \_\_\_\_\_

Date Signed: \_\_\_\_\_

Vice President

8/18/20

## Contractor Description Form

### PRIME CONTRACTOR:

Contract Title: \_\_\_\_\_  
Business Name: \_\_\_\_\_ Award Total: \$ \_\_\_\_\_  
Local Business Enterprise: YES \_\_\_\_\_ NO \_\_\_\_\_ (Check only one)  
Address: \_\_\_\_\_  
City/State/Zip: \_\_\_\_\_  
County: \_\_\_\_\_  
Telephone: (     ) \_\_\_\_\_ FAX: (     ) \_\_\_\_\_  
Contact Person/Title: \_\_\_\_\_  
Email Address: \_\_\_\_\_

### SUBCONTRACTOR:

Business Name: \_\_\_\_\_ Award Total: \$ \_\_\_\_\_  
Services to be provided: \_\_\_\_\_  
Local Business Enterprise: YES \_\_\_\_\_ NO \_\_\_\_\_ (Check only one)  
Address: \_\_\_\_\_  
City/State/Zip: \_\_\_\_\_  
County: \_\_\_\_\_  
Telephone: (     ) \_\_\_\_\_ FAX: (     ) \_\_\_\_\_  
Contact Person/Title: \_\_\_\_\_  
Email Address: \_\_\_\_\_

### SUBCONTRACTOR:

Business Name: \_\_\_\_\_ Award Total: \$ \_\_\_\_\_  
Services to be provided: \_\_\_\_\_  
Local Business Enterprise: YES \_\_\_\_\_ NO \_\_\_\_\_ (Check only one)  
Address: \_\_\_\_\_  
City/State/Zip: \_\_\_\_\_  
County: \_\_\_\_\_  
Telephone: (     ) \_\_\_\_\_ FAX: (     ) \_\_\_\_\_  
Contact Person/Title: \_\_\_\_\_  
Email Address: \_\_\_\_\_

### SUBCONTRACTOR:

Business Name: \_\_\_\_\_ Award Total: \$ \_\_\_\_\_  
Services to be provided: \_\_\_\_\_  
Local Business Enterprise: YES \_\_\_\_\_ NO \_\_\_\_\_ (Check only one)  
Address: \_\_\_\_\_  
City/State/Zip: \_\_\_\_\_  
County: \_\_\_\_\_  
Telephone: (     ) \_\_\_\_\_ FAX: (     ) \_\_\_\_\_  
Contact Person/Title: \_\_\_\_\_  
Email Address: \_\_\_\_\_

### SUBCONTRACTOR:

Business Name: \_\_\_\_\_ Award Total: \$ \_\_\_\_\_  
Services to be provided: \_\_\_\_\_  
Local Business Enterprise: YES \_\_\_\_\_ NO \_\_\_\_\_ (Check only one)  
Address: \_\_\_\_\_  
City/State/Zip: \_\_\_\_\_  
County: \_\_\_\_\_  
Telephone: (     ) \_\_\_\_\_ FAX: (     ) \_\_\_\_\_  
Contact Person/Title: \_\_\_\_\_  
Email Address: \_\_\_\_\_

## ACKNOWLEDGMENT

A notary public or other officer completing this certificate verifies only the identity of the Individual who signed the document to which this certificate is attached, and not the truthfulness, accuracy, or validity of that document.

State of California

County of \_\_\_\_\_ )

On \_\_\_\_\_ before me, \_\_\_\_\_  
(Insert name and title of the officer)

personally appeared \_\_\_\_\_,  
who proved to me on the basis of satisfactory evidence to be the person(s) whose name(s) is/are  
subscribed to the within instrument and acknowledged to me that he/she/they executed the same in  
his/her/their authorized capacity(ies), and that by his/her/their signature(s) on the instrument the  
person(s), or the entity upon behalf of which the person(s) acted, executed the instrument.

I certify under PENALTY OF PERJURY under the laws of the State of California that the foregoing  
paragraph is true and correct.

WITNESS my hand and official seal.

Signature \_\_\_\_\_ (Seal)