
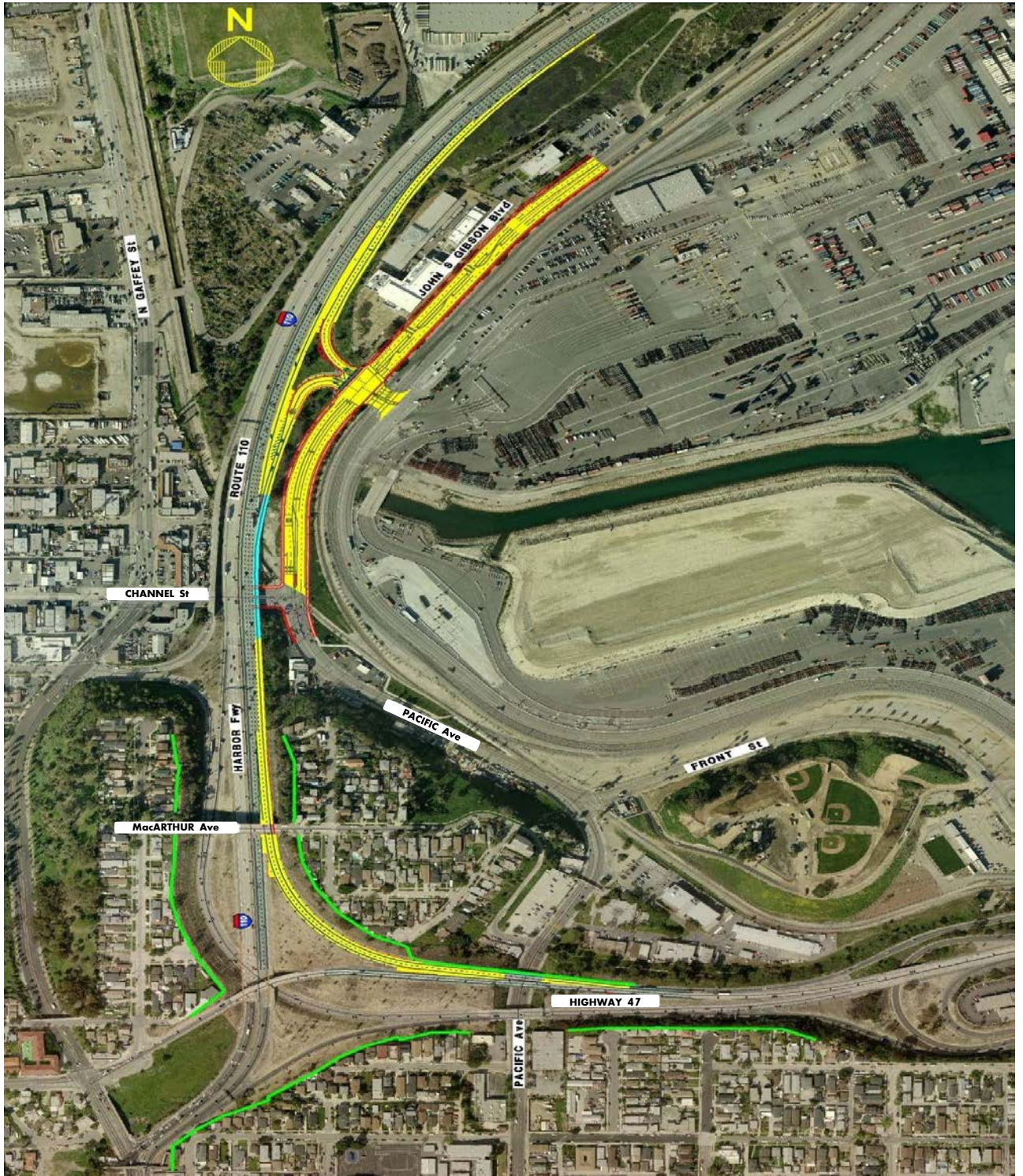




Project Location


SCALE AS SHOWN	RECOMMENDED FOR APPROVAL	John S. Gibson Blvd/I-110 Freeway Access Ramp Improvements and SR-47/I-110 Northbound Connector Widening	
DRAWN:	CHIEF OF DESIGN	LOCATION KEY MAP	
CHECKED:			
DESIGNED:			
ENGR/ARCH	ASSISTANT HARBOR CHIEF ENGINEER	APPROVED	 PORT OF LOS ANGELES <small>CONSTRUCTION DIVISION P.O. BOX 151 SAN PEDRO, CA 90733-0151</small>
		CHIEF HARBOR ENGINEER	



SCALE	RECOMMENDED FOR APPROVAL
AS SHOWN	
DRAWN:	CHIEF OF DESIGN
CHECKED:	
DESIGNED:	
ENGR/ARCH	ASSISTANT HARBOR CHIEF ENGINEER

**John S. Gibson Blvd/I-110 Freeway Access Ramp Improvements and
SR-47/I-110 Northbound Connector Widening**

Aerial View

APPROVED	 PORT OF LOS ANGELES <small>CONSTRUCTION DIVISION P.O. BOX 151 SAN PEDRO, CA 90733-0151</small>
CHIEF HARBOR ENGINEER	