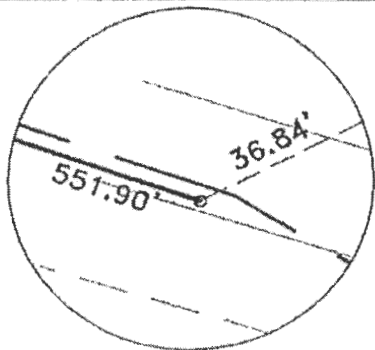
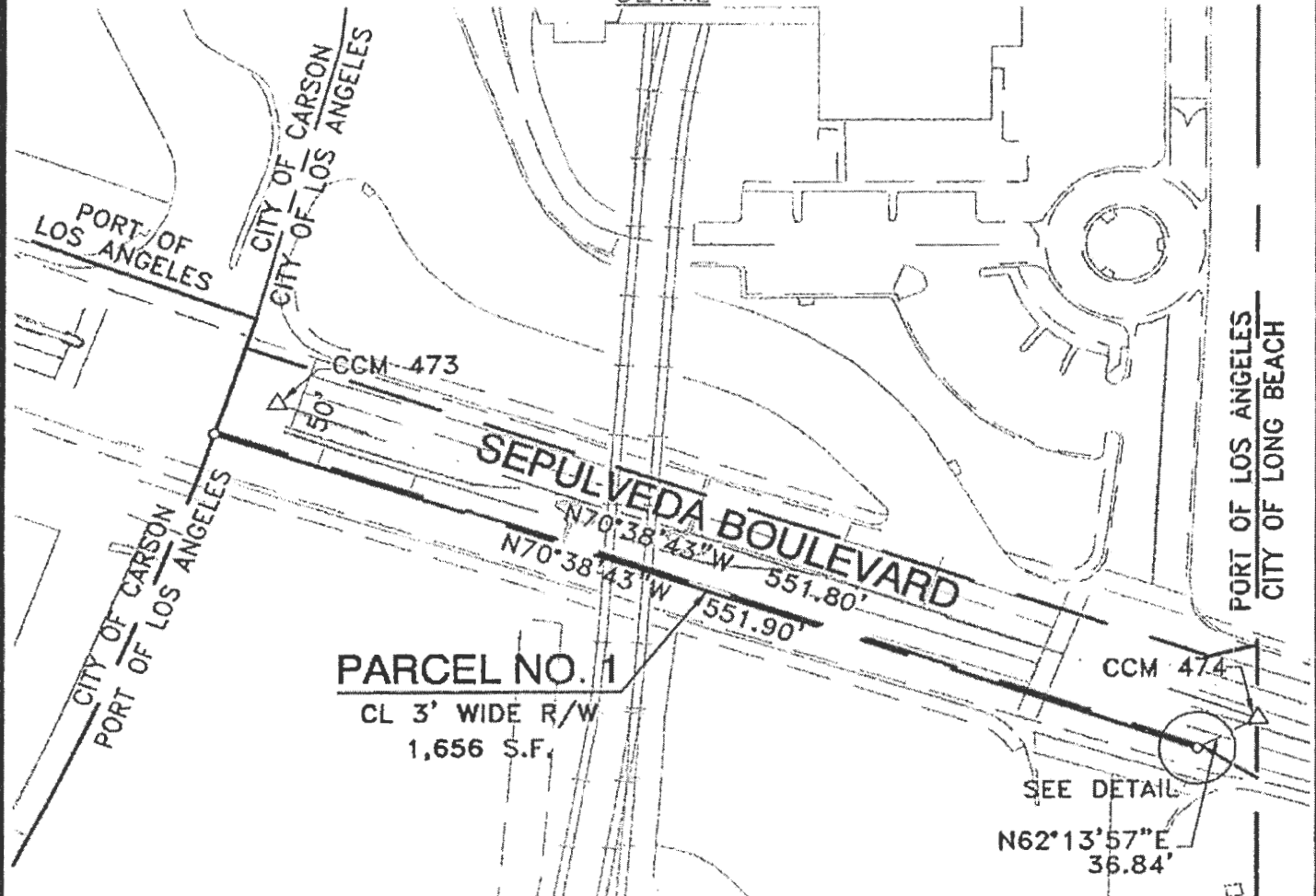


NO.	DATE	DRAWN	REVISIONS -	CH'KD	APP'D	SCALE: 1"=100'	RECOMMENDED FOR APPROVAL	PERMIT MAP - AUTHORITY NO. P415	
						DRAWN: PSOMAS 4/03 <i>ML</i>	CHIEF OF DESIGN	SOUTHERN CALIFORNIA GAS CO.	
						CHECKED: PSOMAS 4/03 <i>ML</i>	<i>[Signature]</i>		
						DESIGNED: PSOMAS 4/03 <i>ECO</i>	ASSISTANT CHIEF HARBOR ENGINEER	APPROVED	THE PORT OF LOS ANGELES <small>DEPARTMENT OF PUBLIC WORKS & UTILITIES, CITY OF LOS ANGELES, CALIFORNIA</small>
						ENGR/ARCH	<i>[Signature]</i>	<i>[Signature]</i> CHIEF HARBOR ENGINEER	
						<i>Daryl B. Basack</i> <i>John O. Osherson</i>			44786-2

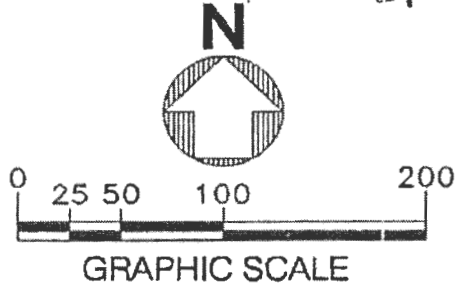


DETAIL



PARCEL NO. 1
CL 3' WIDE R/W
1,656 S.F.

- NOTE:
- 1) No substructures are shown on this drawing. Accurate substructure information must be obtained from lessees and L.A.H.D. engineering records.
 - 2) Horizontal Datum is based on the North American Datum of 1983 (NAD 83), California Coordinate System, Zone 5, Feet.
 - 3) All distances shown on this drawing are grid distances. To obtain a reasonable representation of the ground distance, divide the distance herein by the average scale factor of 1.000076.



SCALE: 1"=100'	DATE: 4/03	RECOMMENDED FOR APPROVAL	PERMIT MAP - AUTHORITY NO. P415	
DRAWN: P.SOMAS	CHECKED: P.SOMAS	DESIGNED: P.SOMAS	SOUTHERN CALIFORNIA GAS CO	
ENGR/ARCH	ASSISTANT CHIEF HARBOR ENGINEER	APPROVED	THE PORT OF LOS ANGELES ENGINEERING DIVISION, P.O. BOX 19, SAN PEDRO, CA 90732	
<i>Paul B. Rapp</i>	<i>Gerald</i>	<i>Wacey Jones</i>	DRAWING NUMBER 5-4767-1	