
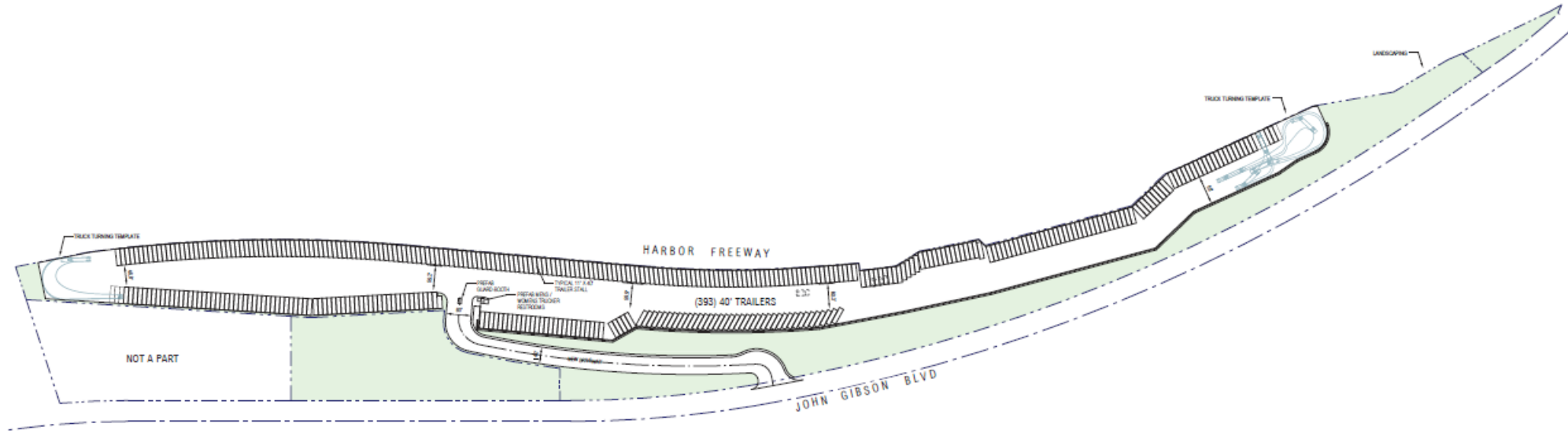


Para escuchar en español,
por favor haga clic en el
ícono de Interpretación 


Notice of
Preparation of
Draft
Environmental
Impact Report
&
Initial Study



John S. Gibson Truck & Chassis Parking Lot
Project
Public Scoping Meeting


Nov. 14, 2023
4:00 pm PST


Agenda

Para escuchar en español,
por favor haga clic en el
ícono de Interpretación 


- Lead Agency Role and CEQA Process
- Presentation of the Proposed Project
- NOP/IS determinations
- Public Comments
- Closing Remarks

Meeting Format

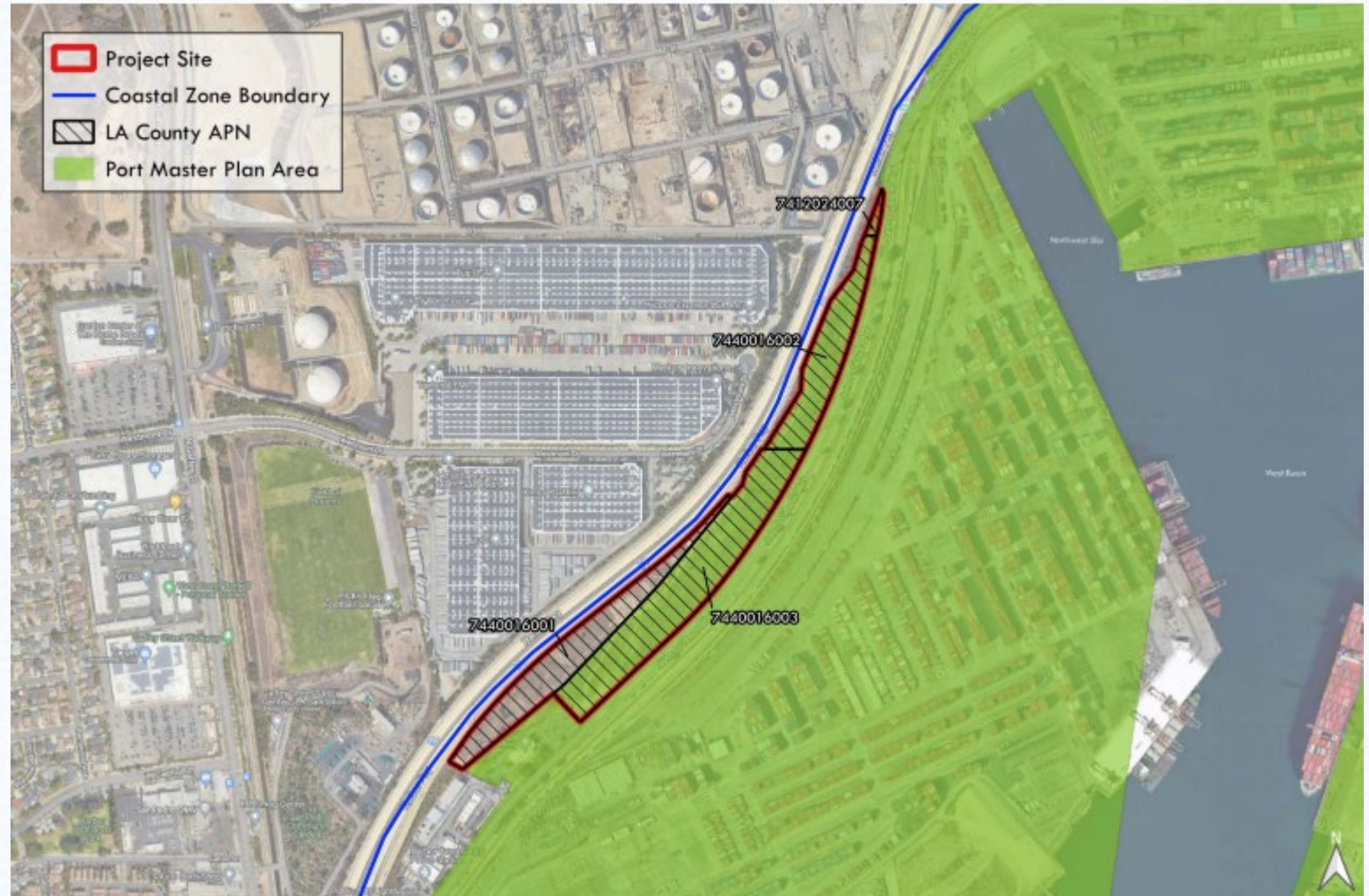
Para escuchar en español,
por favor haga clic en el
ícono de Interpretación 

- This is a public scoping meeting for the John S. Gibson Truck & Chassis Parking Lot Project
- Oral comments limited to 3 minutes each
 - Spanish interpreter is available
 - Para escuchar en español, por favor haga clic en el ícono de Interpretación 
- Written public comments on the NOP/IS will be accepted via mail or email until December 11th, 2023
 - Comments should be limited to the NOP/IS


Lead Agency Role

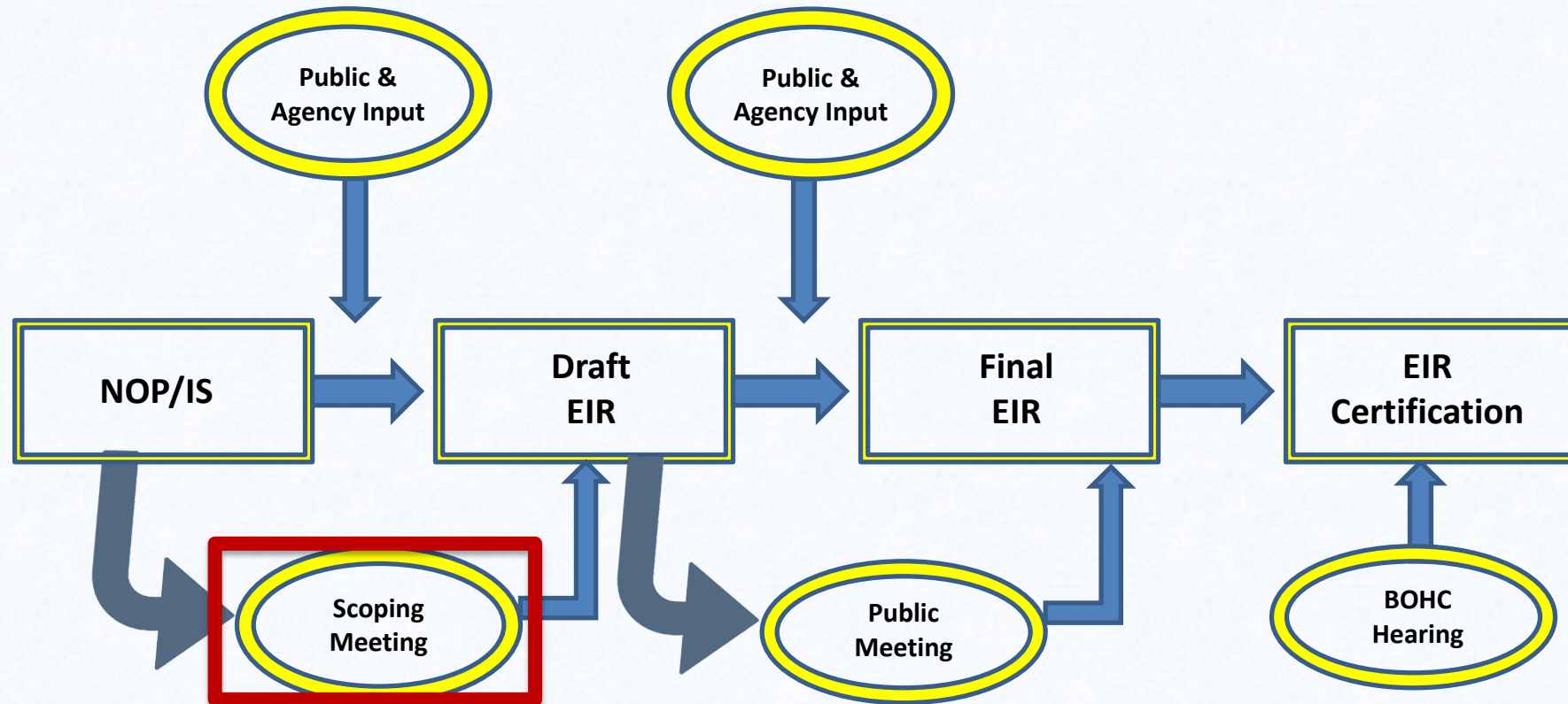
Para escuchar en español,
por favor haga clic en el
ícono de Interpretación 

- Property is not on Port-owned property
- Site is within the Coastal Zone and requires a Coastal Development Permit (CDP)
- Portion of site remains within the Port Master Plan (PMP) Area of the Coastal Zone
- LAHD is responsible for issuing a PMP amendment and a CDP and is therefore the Lead Agency under CEQA
 - City of Los Angeles will also rely on this document when they issue their CDP




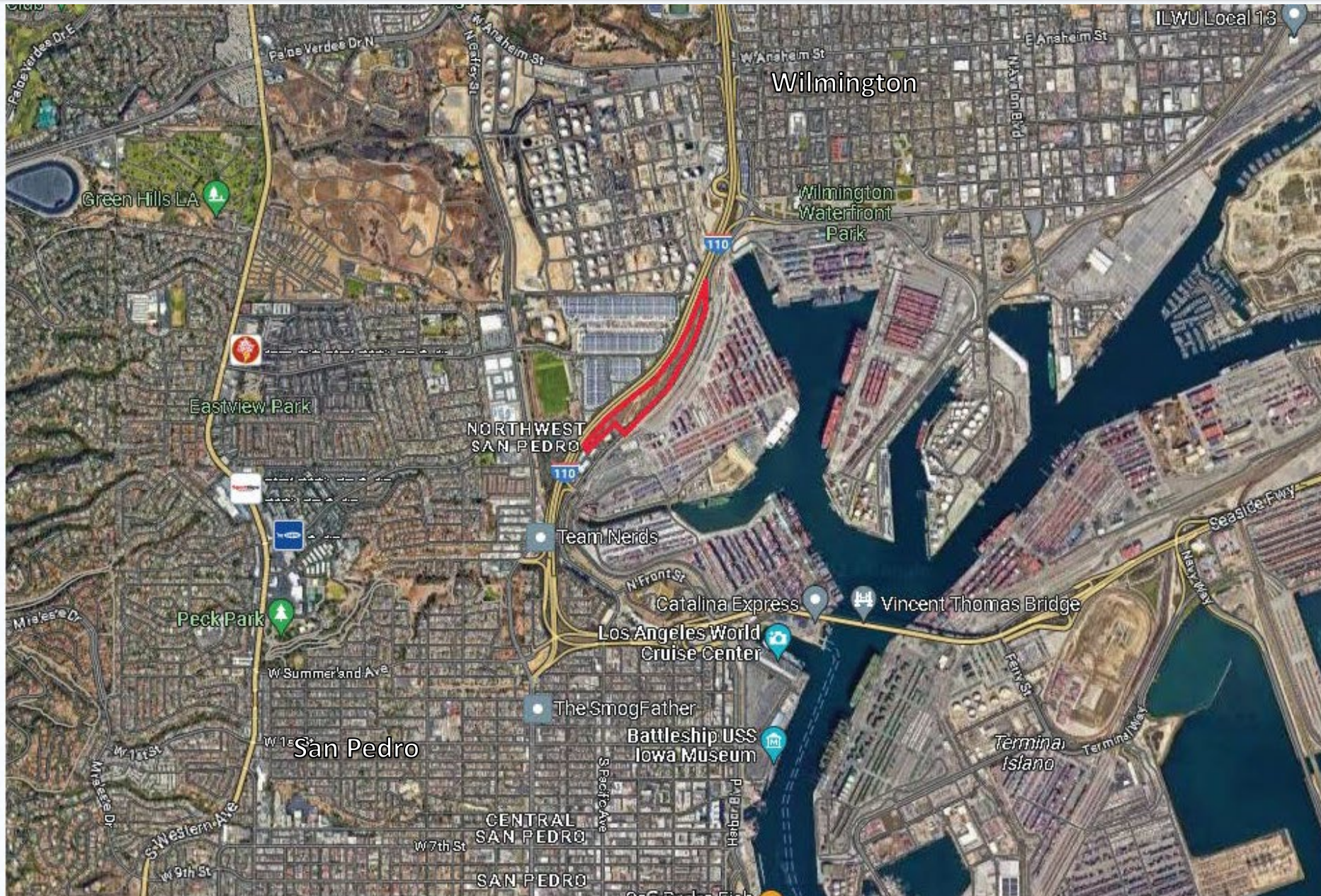
CEQA Process

Para escuchar en español,
por favor haga clic en el
ícono de Interpretación 




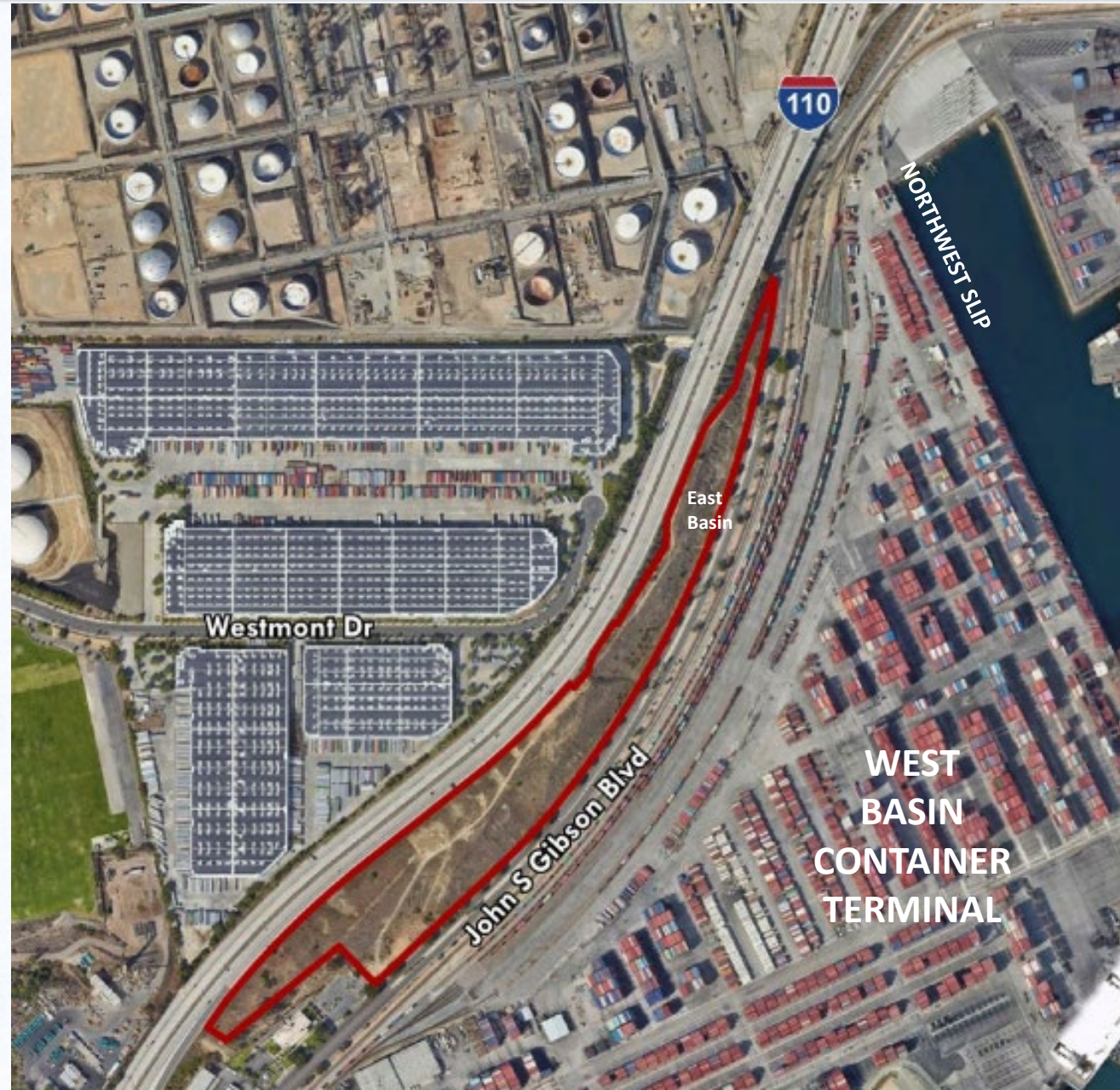
Proposed Project Site Location

Para escuchar en español,
por favor haga clic en el
ícono de Interpretación 




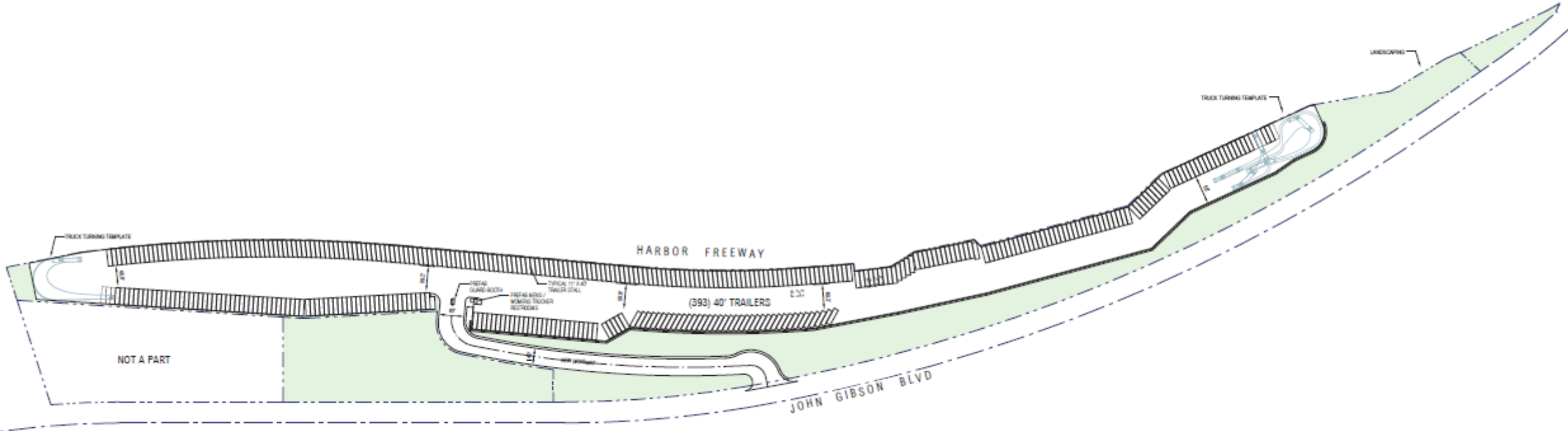
Proposed Project Site

Para escuchar en español,
por favor haga clic en el
ícono de Interpretación 



Conceptual Site Plan

Para escuchar en español,
por favor haga clic en el
ícono de Interpretación 






Project Overview

- This project proposes to construct and operate a truck and chassis parking lot located at 1599 John S. Gibson Boulevard
 - Short-term parking - not exceeding 24 hours.
 - Approximately 9.3 acres of the 18.63 acre site will be paved and striped with approximately 393 truck and chassis stalls.
 - Construction on site would also include retaining walls, a guard shack and restroom, a driveway, utilities, and an approximately 7.2 acres of landscaped area with native and drought-tolerant plants.

Project Objectives

Para escuchar en español,
por favor haga clic en el
ícono de Interpretación 

- Increase efficiency of goods movement in the POLA by providing off-terminal maritime support to help meet the demands of current and anticipated cargo from the various San Pedro Bay port marine terminals
- Provide a facility that increases the efficiency of terminal operations by providing storage and staging of trucks and chassis in the POLA
- Provide a facility that alleviates truck traffic congestion and illegal parking by providing trailer parking
- Develop an underutilized property conveniently located in the vicinity of the I-110 with access to available infrastructure, including roads and utilities to accommodate the growing need for goods movement in Southern California

- Parking and storage of trucks and chassis with and without containers, up to 40-feet-long
 - No stacking
- Charging for electric on-site equipment
 - One zero-emission utility tractor rig and two small zero-emission forklifts
- Operation of a guard booth and restrooms for use by employees and truck drivers
 - Approximately 6 employees per day
- Approximately 1,794 one-way truck trips per day



CEQA Issues with Less than Significant Impacts

An Initial Study was performed using the CEQA Checklist to determine the scope of the EIR that will be prepared. The following resource areas were analyzed and found to have **No Impacts** or **Less than Significant Impacts** from the proposed Project:

- Agriculture and Forestry Resources
- Hydrology and Water Quality
- Mineral Resources
- Population and Housing
- Public Services
- Recreation
- Tribal and Cultural Resources
- Utilities and Services Systems
- Wildfires

These areas will not be considered in the Draft EIR.




CEQA issues to be analyzed further in the Draft EIR

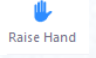

The following resource areas were analyzed and found to have **Potentially Significant Impacts** for at least one of the significant criteria in the CEQA Checklist:

- Aesthetics
- Air Quality
- Biological Resources
- Cultural Resources
- Energy
- Geology and Soils
- Greenhouse Gas Emissions
- Hazards and Hazardous Materials
- Land Use and Planning
- Noise
- Transportation


These areas will be studied in more depth in the Draft EIR that will be prepared once the public comment period has ended.

Open Floor – Public Comments

Para escuchar en español,
por favor haga clic en el
ícono de Interpretación 

- **Speakers will be given 3 minutes to speak**
- **If you wish to speak**, press the “Raise Hand” button to provide verbal comments ().
 - Once your name is called, it will be stated that you have been unmuted to speak.
 - Please state your first and last name clearly and spell your name for the record.
- **If you have joined by dialing in and wish to speak**, please raise your hand by pressing *9.
 - Once it is your turn to speak, you will hear the prompt “you have been unmuted.” Please unmute yourself by pressing *6, then state your first and last name, and spell your name for the record.
- **Interprete disponible** – Para escuchar en español, por favor haga clic en el ícono de Interpretación 

Closing Remarks

Para escuchar en español,
por favor haga clic en el
ícono de Interpretación 

Providing Comments After Tonight's Meeting

- Comments will be accepted until December 11th, 2023
- Written Comments must be sent via mail or email to:
Director of Environmental Management
City of Los Angeles Harbor Department
425 S. Palos Verdes Street
San Pedro, CA 90731
 - Email: ceqacomment@portla.org
- Please include the project title in the subject line:
John S. Gibson Truck & Chassis Parking Lot Project