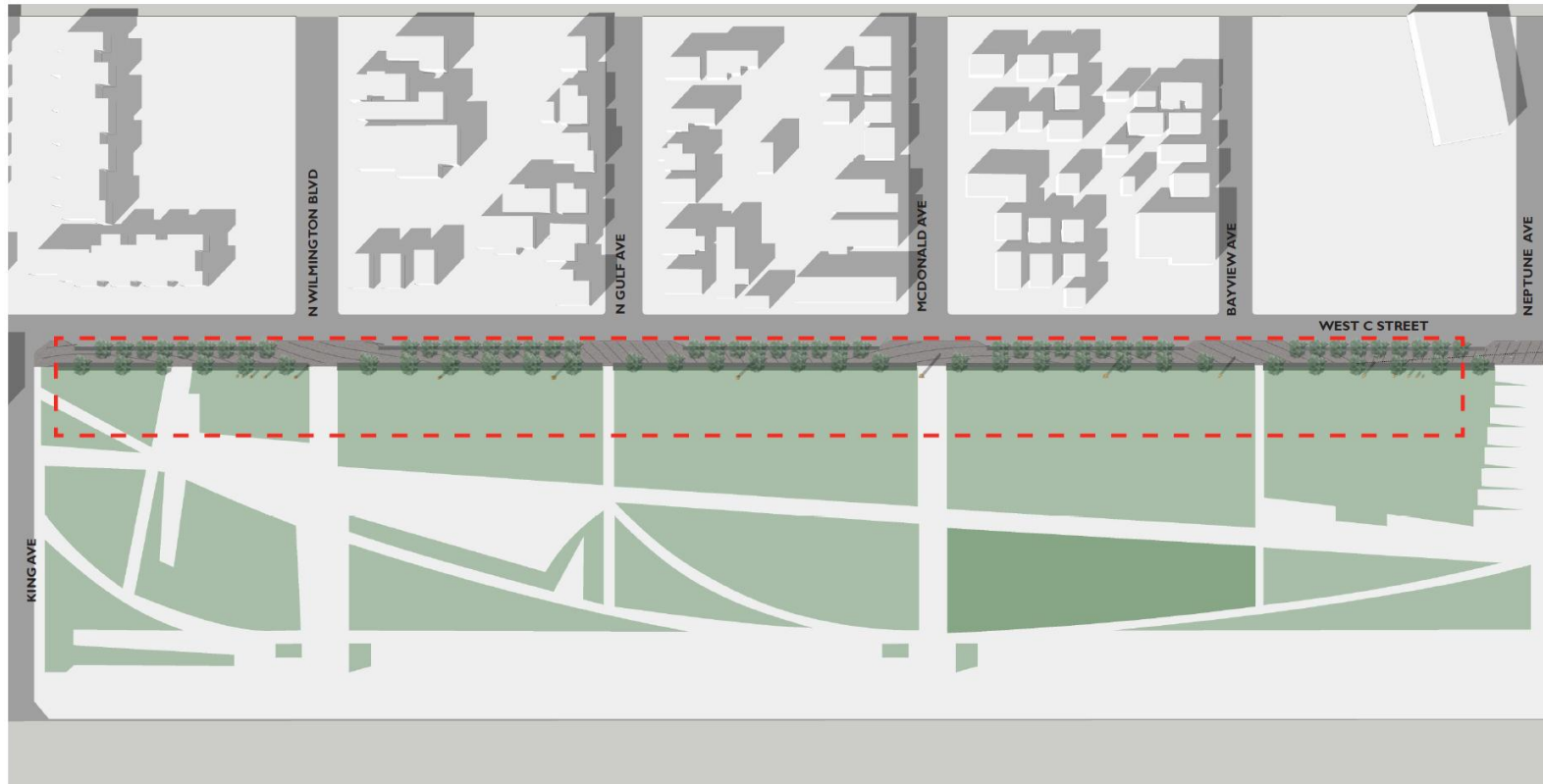


“Coastline” Exhibit



Installation location, south of the walkway along C Street

Project Elements:

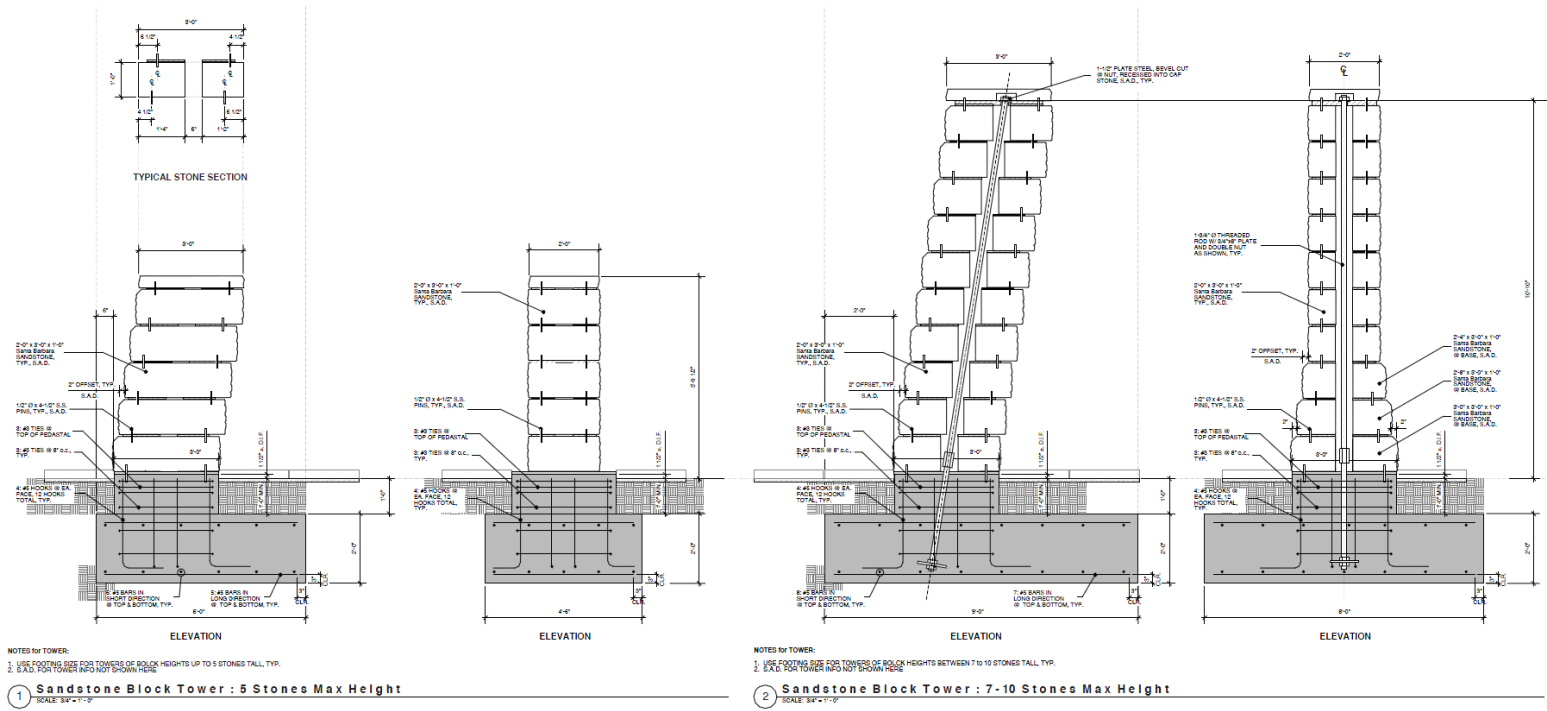
- 18 sandstone columns constructed south of the West C Street sidewalk, recalling the nearby coastal bluffs
- At each end, columns are 1' high, increasing to a maximum of 14' high for the central 4 columns
- Spacing of the columns similarly increases from 1' at each end to a maximum of 280' in the center



View looking east along West C Street – sandstone columns begin with low height (0') and close spacing (1')



View from center of installation – sandstone columns reach maximum height (14') and spacing (240')



Typical column details