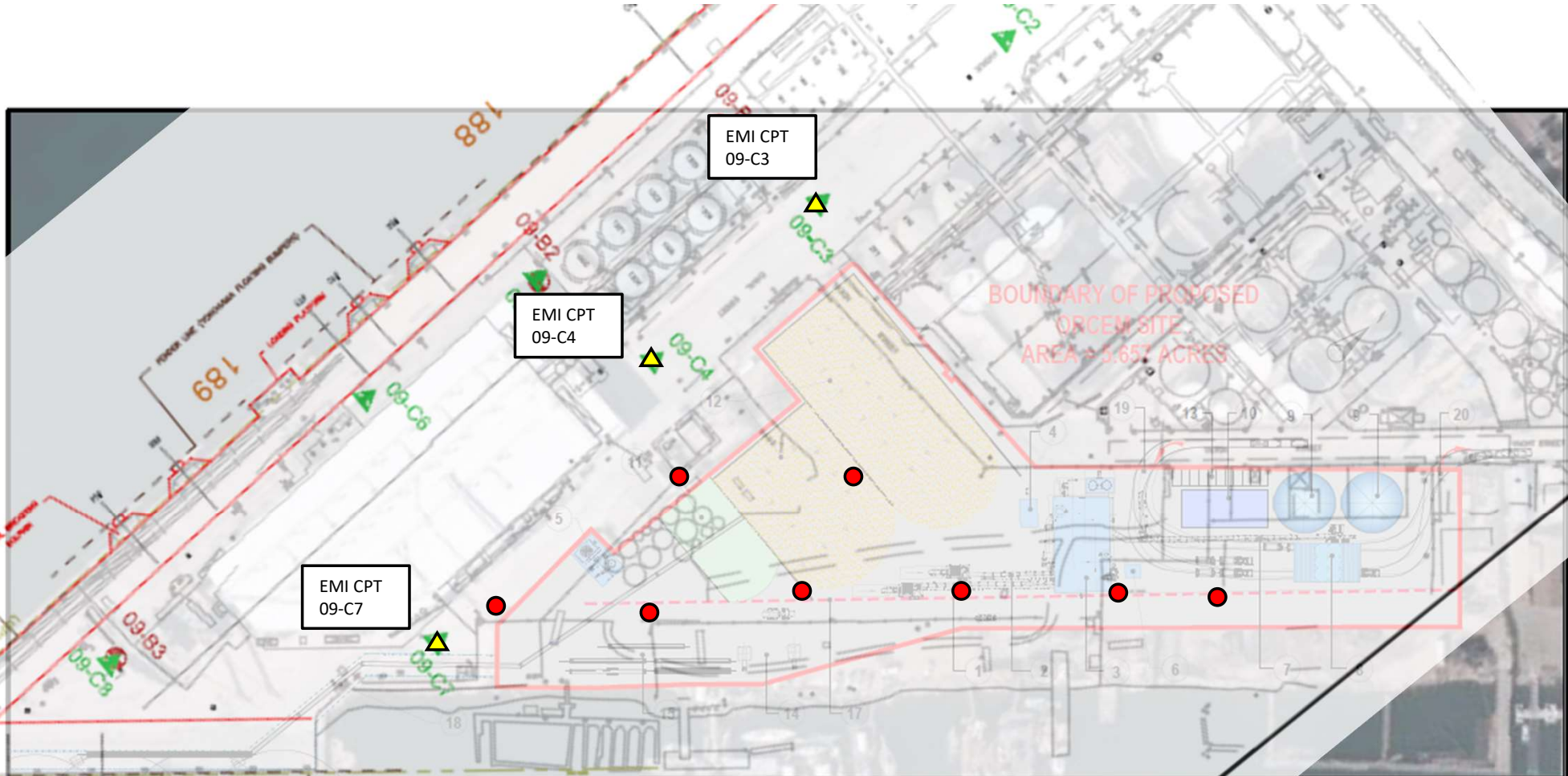


Proposed Locations of Subsurface Explorations



BOUNDARY OF PROPOSED
ECOCEM SITE
AREA = 5.657 ACRES

EMI CPT
09-C3

EMI CPT
09-C4

EMI CPT
09-C7

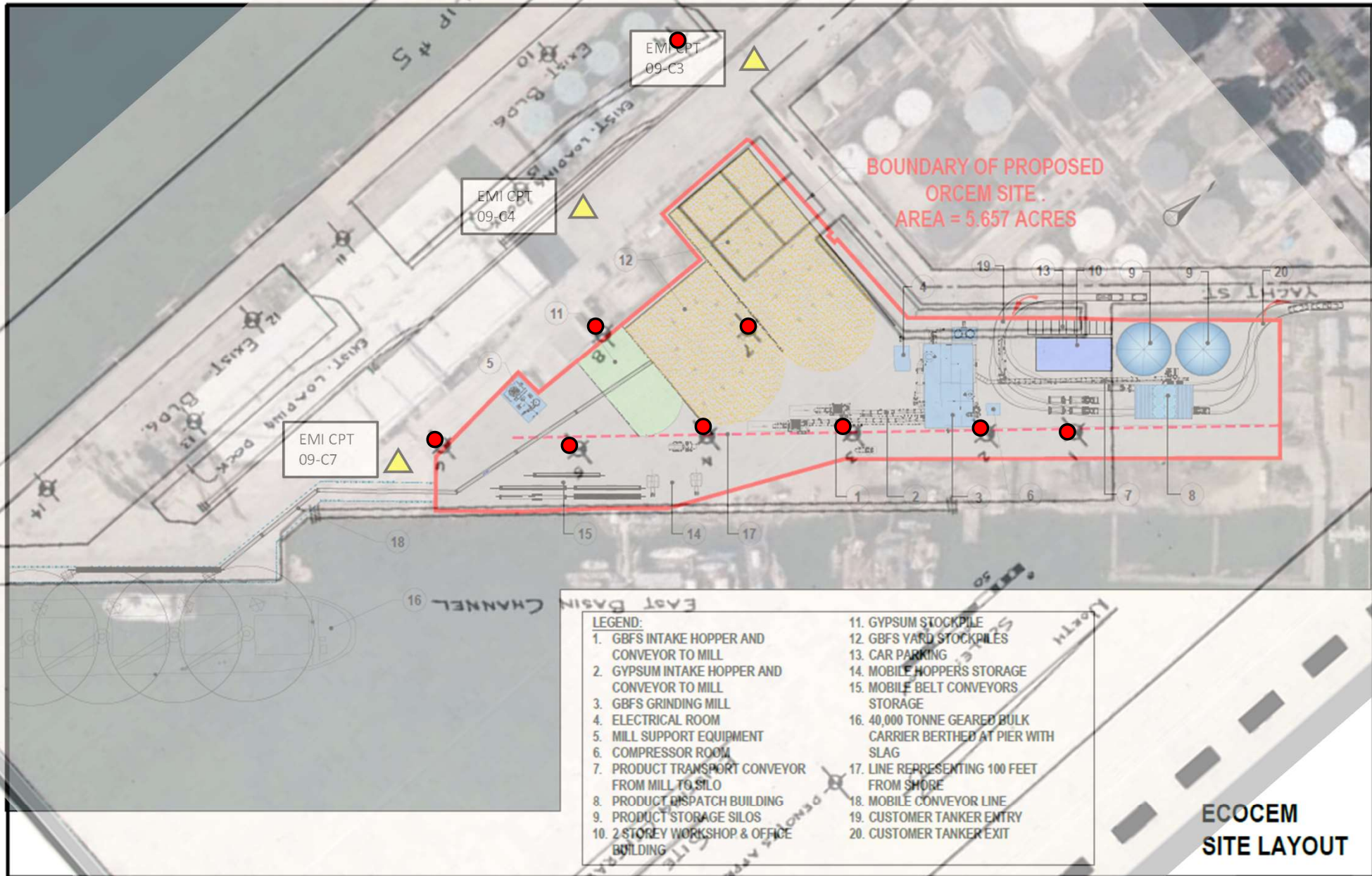
LEGEND:

- | | |
|---|---|
| 1. GBFS INTAKE HOPPER AND CONVEYOR TO MILL | 11. GYPSUM STOCKPILE |
| 2. GYPSUM INTAKE HOPPER AND CONVEYOR TO MILL | 12. GBFS YARD STOCKPILES |
| 3. GBFS GRINDING MILL | 13. CAR PARKING |
| 4. ELECTRICAL ROOM | 14. MOBILE HOPPERS STORAGE |
| 5. MILL SUPPORT EQUIPMENT | 15. MOBILE BELT CONVEYORS STORAGE |
| 6. COMPRESSOR ROOM | 16. 40,000 TONNE GEARED BULK CARRIER BERTHED AT PIER WITH |
| 7. PRODUCT TRANSPORT CONVEYOR FROM MILL TO SILO | 17. LINE REPRESENTING 100 FEET FROM SHORE |
| 8. PRODUCT DISPATCH BUILDING | 18. MOBILE CONVEYOR LINE |
| 9. PRODUCT STORAGE SILOS | 19. CUSTOMER TANKER ENTRY |
| 10. 2 STOREY WORKSHOP & OFFICE BUILDING | 20. CUSTOMER TANKER EXIT |

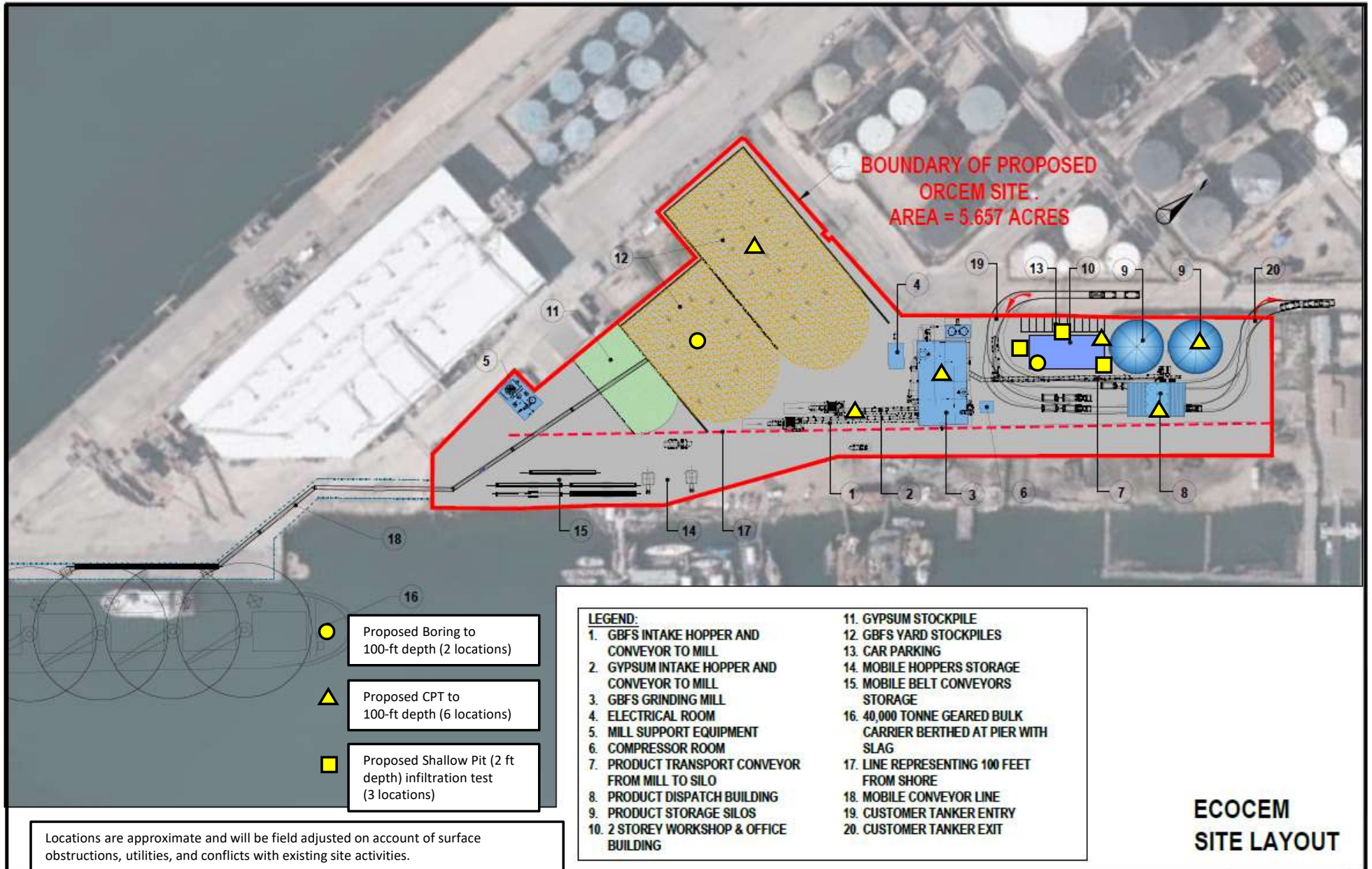
Legend
 + 09-B1 Current EMI Soil Both
 ▲ 09-C1 Current EMI CPT Sr



**ECOCEM
SITE LAYOUT**



**ECOCEM
SITE LAYOUT**



Proposed Locations of Subsurface Explorations
Proposed Bulk Handling and Processing Facility - Berths 191 through 194