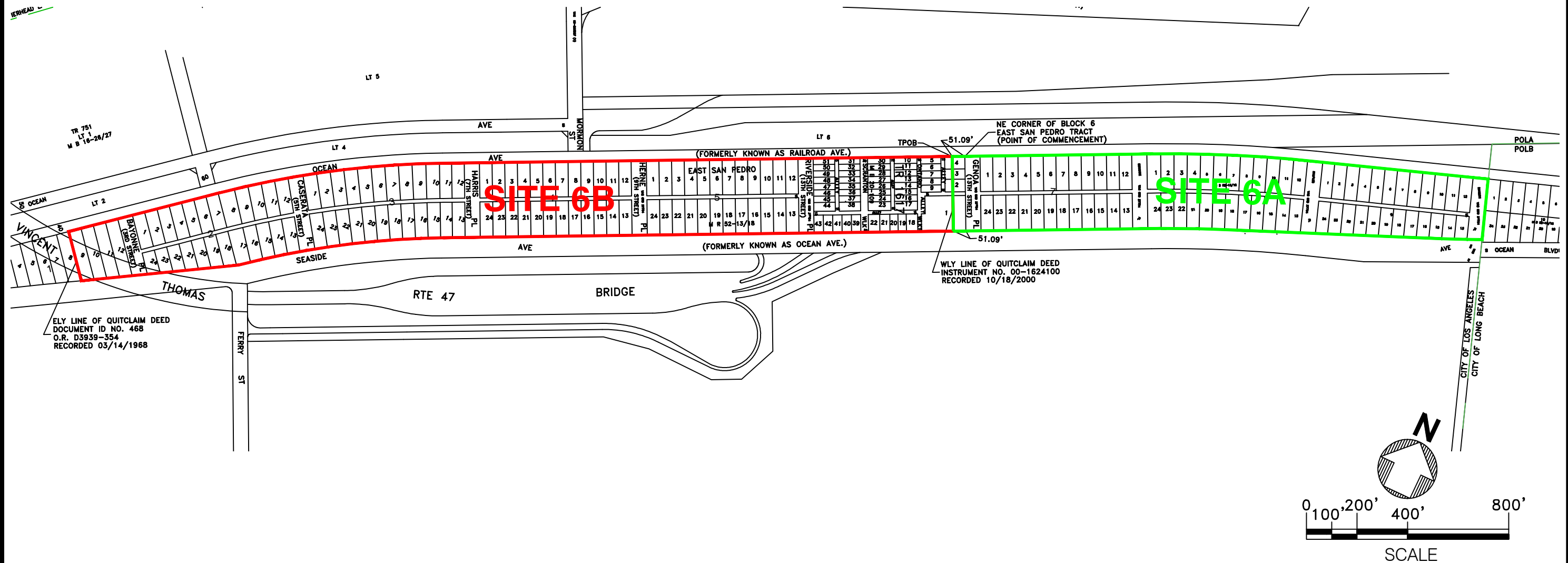



PORTION OF EAST SAN PEDRO PER MAP
 RECORDED IN BOOK 52, PAGES 13 - 18,
 INCLUSIVE OF MISCELLANEOUS RECORDS,
 COUNTY OF LOS ANGELES



NO.	DATE	DRAWN	REVISIONS -	CH'KD	APP'D	SCALE: 1" = 400'	RECOMMENDED FOR APPROVAL	FORMER UNITED STATES NAVY LAND	
						DRAWN: D. RAASCH	CHIEF OF DESIGN	SITE 6A & SITE 6B	
						CHECKED: E. GILBERTSEN			
						DESIGNED: D. RAASCH	ASSISTANT CHIEF HARBOR ENGINEER	APPROVED	DRAWING NUMBER
						ENGR/ARCH		CHIEF HARBOR ENGINEER	SKETCH
								 THE PORT OF LOS ANGELES ENGINEERING DIVISION 425 S. PALOS VERDES STREET SAN PEDRO CA 90731-3309	

DWG: N:\easped\proj\chir.O\W\LEASE\SITE 6A\6B.dwg USER: raaschd
 DATE: Aug 19 2014 2:10pm XREFS:BDRYPIER.BDRY;POLA.IMAGES;
 POLAPRO4_VER.1_12/96 ka