

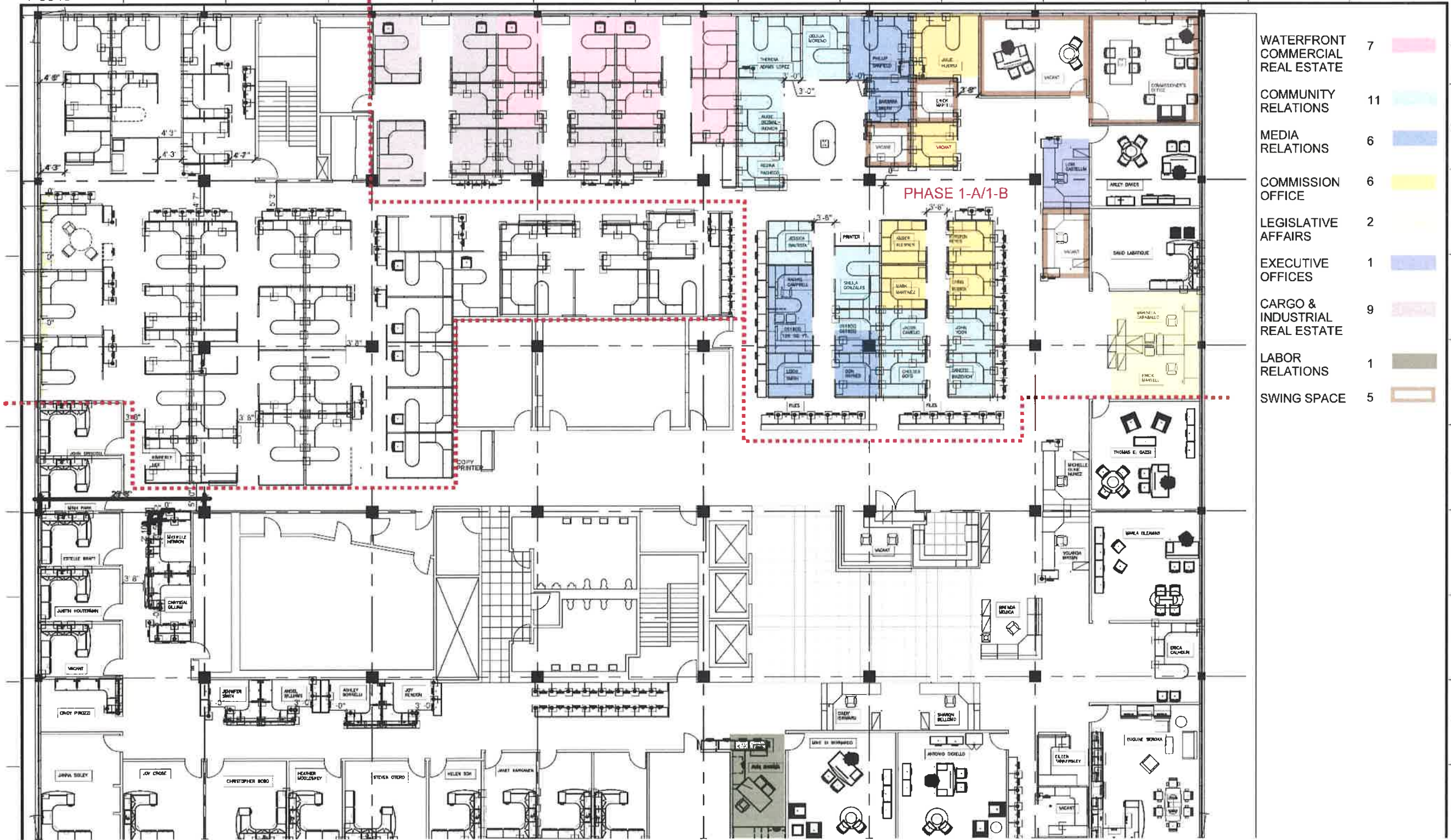
HAB 5th Floor Phase 1: Moving Out Plan



WEST

EAST

1-3345



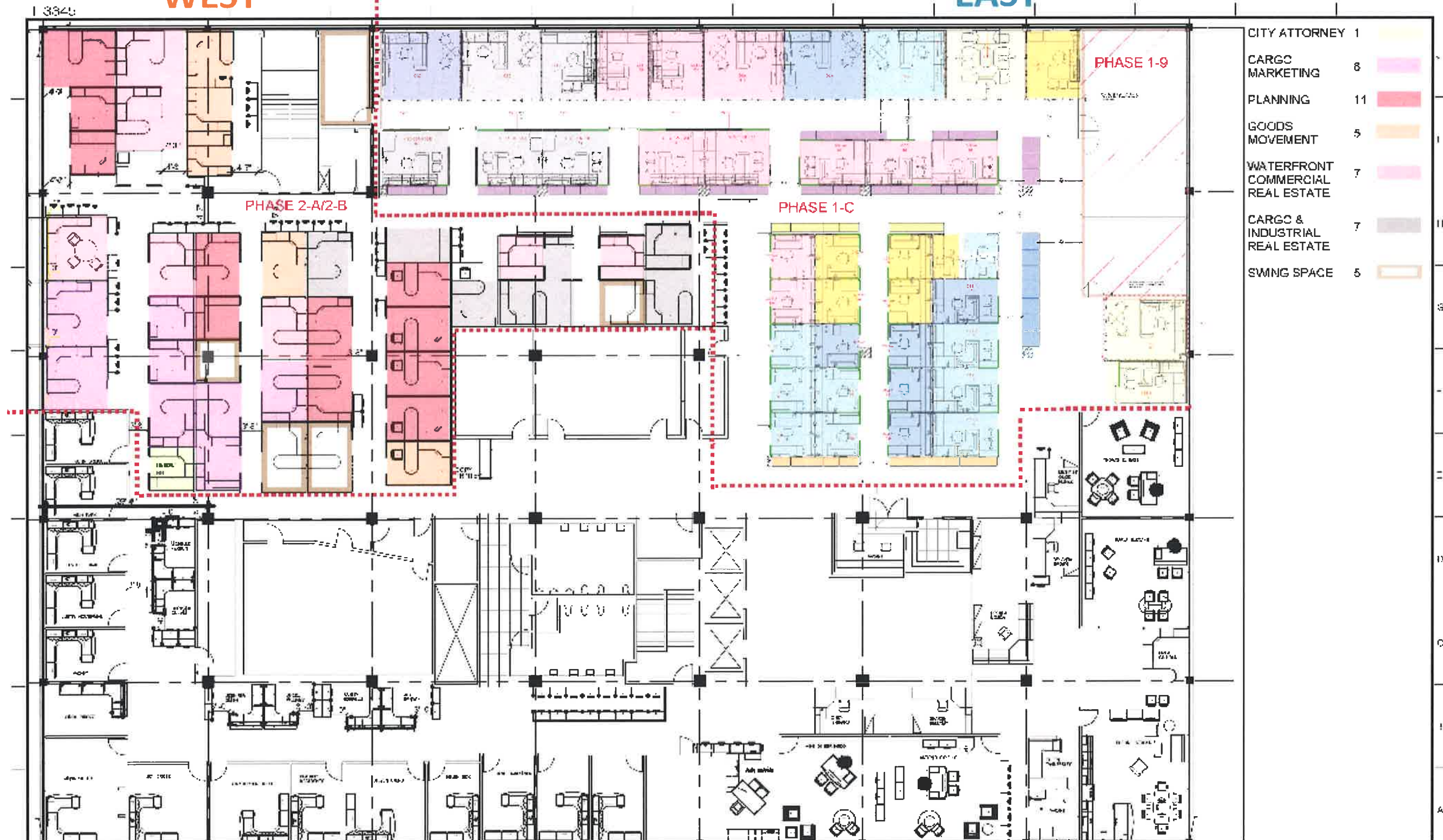
WATERFRONT COMMERCIAL REAL ESTATE	7	[Pink]	J
COMMUNITY RELATIONS	11	[Light Blue]	
MEDIA RELATIONS	6	[Blue]	
COMMISSION OFFICE	6	[Yellow]	
LEGISLATIVE AFFAIRS	2	[Light Yellow]	H
EXECUTIVE OFFICES	1	[Dark Blue]	G
CARGO & INDUSTRIAL REAL ESTATE	9	[Light Pink]	F
LABOR RELATIONS	1	[Brown]	E
SWING SPACE	5	[Orange]	D

HAB 5th Floor **Phase 1**: Moving in & **Phase 2**: Moving Out Plan



WEST

EAST



HAB 5th Floor Phase 2: Moving In Plan



THE RESOURCE GROUP
 HAYWARD, CALIFORNIA
 (754) 475 2000
 (754) 475 8922
 PICO RIVERA, CALIFORNIA
 (754) 946 1111
 (754) 946 7110
 WOODLAND HILLS, CA
 (818) 286 3640
 (818) 286 2646

Rev.	Description	Date

**PORT OF LA
5TH FLOOR
FURNITURE LAYOUT**

Project: PORT OF LA
5TH FLOOR
FURNITURE LAYOUT

Address:
426 S. PALO VERDES ST
SAN PEDRO, CA 90731

Client Approval:
Name: _____
Date: _____

Drawn: EM	Scale: 1/8" = 1'-0"	SHEET 2
Checked: EM	Date: 12.21.2018	

HAB 4th Floor **Phase 4**: Moving in & **Phase 5**: Build Out Plan



HAB 4th Floor Phase 6: Moving Out Plan



HAB 4th Floor **Phase 6**: Moving in & **Phase 7**: Moving Out Plan



UTISOURCE SOLUTIONS

HAYWARD, CALIFORNIA
(925) 475-2000
(925) 475-9922

PICO RIVERA, CALIFORNIA
(760) 948-1111
(760) 948-7110

WOODLAND HILLS, CA
(760) 285-0842
(760) 285-0845

Rev. No.	Description	Date

PORT OF LA
4TH FLOOR
FURNITURE LAYOUT

Project: PORT OF LA
4TH FLOOR
FURNITURE LAYOUT

Address: 428 S. PALO VERDE BL.,
SAN PEDRO, CA 90731

Client Approval:
Name: _____
Date: _____

Date: 12.28.2016 **Scale:** 1/8" = 1'-0"

Drawn: PMJ/AM **Designed:** EM

File Path: _____

SHEET
1
Sheet 1 of 2

ID	Task Name	Duration	Start	Finish	Qtr 1, 2017			Qtr 2, 2017			Qtr 3, 2017			Qtr 4, 2017			Qtr 1, 2018			Qtr 2, 2018			Qtr 3, 2018			Qtr 4, 2018			Qtr 1, 2019			Qtr 2, 2019			Qtr 3, 2019			Qtr 4, 2019		
					Jul	Aug	Sep	Oct	Nov	Dec	Jan	Feb	Mar	Apr	May	Jun	Jul	Aug	Sep	Oct	Nov	Dec	Jan	Feb	Mar	Apr	May	Jun	Jul	Aug	Sep	Oct	Nov	Dec	Jan	Feb	Mar	Apr	May	Jun
1	HAB 4th & 5th Floor Workspace Schedu	750 days	Mon 7/3/17	Fri 5/15/20	[Gantt bar spanning from Mon 7/3/17 to Fri 5/15/20]																																			
2	Planning	132 days	Mon 7/3/17	Tue 1/2/18	[Gantt bar from Mon 7/3/17 to Tue 1/2/18]																																			
13	Environmental	11 days	Wed 8/23/17	Wed 9/6/17	[Gantt bar from Wed 8/23/17 to Wed 9/6/17]																																			
17	Design	285 days	Wed 1/3/18	Tue 2/5/19	[Gantt bar from Wed 1/3/18 to Tue 2/5/19]																																			
93	Bid & Award	72 days	Wed 2/6/19	Thu 5/16/19	[Gantt bar from Wed 2/6/19 to Thu 5/16/19]																																			
98	Construction	231 days	Fri 6/28/19	Fri 5/15/20	[Gantt bar from Fri 6/28/19 to Fri 5/15/20]																																			
99	Phase 1	33 days	Fri 6/28/19	Tue 8/13/19	[Gantt bar from Fri 6/28/19 to Tue 8/13/19]																																			
110	Phase 2	33 days	Wed 8/14/19	Fri 9/27/19	[Gantt bar from Wed 8/14/19 to Fri 9/27/19]																																			
121	Phase 3	33 days	Mon 9/30/19	Wed 11/13/19	[Gantt bar from Mon 9/30/19 to Wed 11/13/19]																																			
132	Phase 4	33 days	Thu 11/14/19	Mon 12/30/19	[Gantt bar from Thu 11/14/19 to Mon 12/30/19]																																			
143	Phase 5	33 days	Tue 12/31/19	Thu 2/13/20	[Gantt bar from Tue 12/31/19 to Thu 2/13/20]																																			
154	Phase 6	33 days	Fri 2/14/20	Tue 3/31/20	[Gantt bar from Fri 2/14/20 to Tue 3/31/20]																																			
165	Phase 7	33 days	Wed 4/1/20	Fri 5/15/20	[Gantt bar from Wed 4/1/20 to Fri 5/15/20]																																			
176	Project Closeout	150 days	Mon 5/18/20	Fri 12/11/20	[Gantt bar from Mon 5/18/20 to Fri 12/11/20]																																			

Project: Schedule Date: Tue 5/14/19	Task		Project Summary		Inactive Milestone		Manual Summary Rollup		Deadline	
	Split		External Tasks		Inactive Summary		Manual Summary		Critical	
	Milestone		External Milestone		Manual Task		Start-only		Critical Split	
	Summary		Inactive Task		Duration-only		Finish-only		Progress	