



PUBLIC HEARING

on Draft Environmental Document

Tuesday, November 1, 2011
from 6:00 p.m. to 8:00 p.m.
at the John Mendez Youth Center,
707 W. C Street, Wilmington CA, 90744

I-110/C STREET INTERCHANGE PROJECT





Welcome Message

Karl Price, Caltrans
Christopher Cannon,
Port of Los Angeles





Introduction to Public Hearing

Laura Masterson,
Port of Los Angeles





Presentation Agenda

1. Introduction

- Meeting Format
- Environmental Review Process

2. Project Information

- Project Purpose
- Project Features
- Schedule
- Summary of Environmental Findings

3. Public Comments

- Availability of Draft Environmental Document
- Your Role



Meeting Format

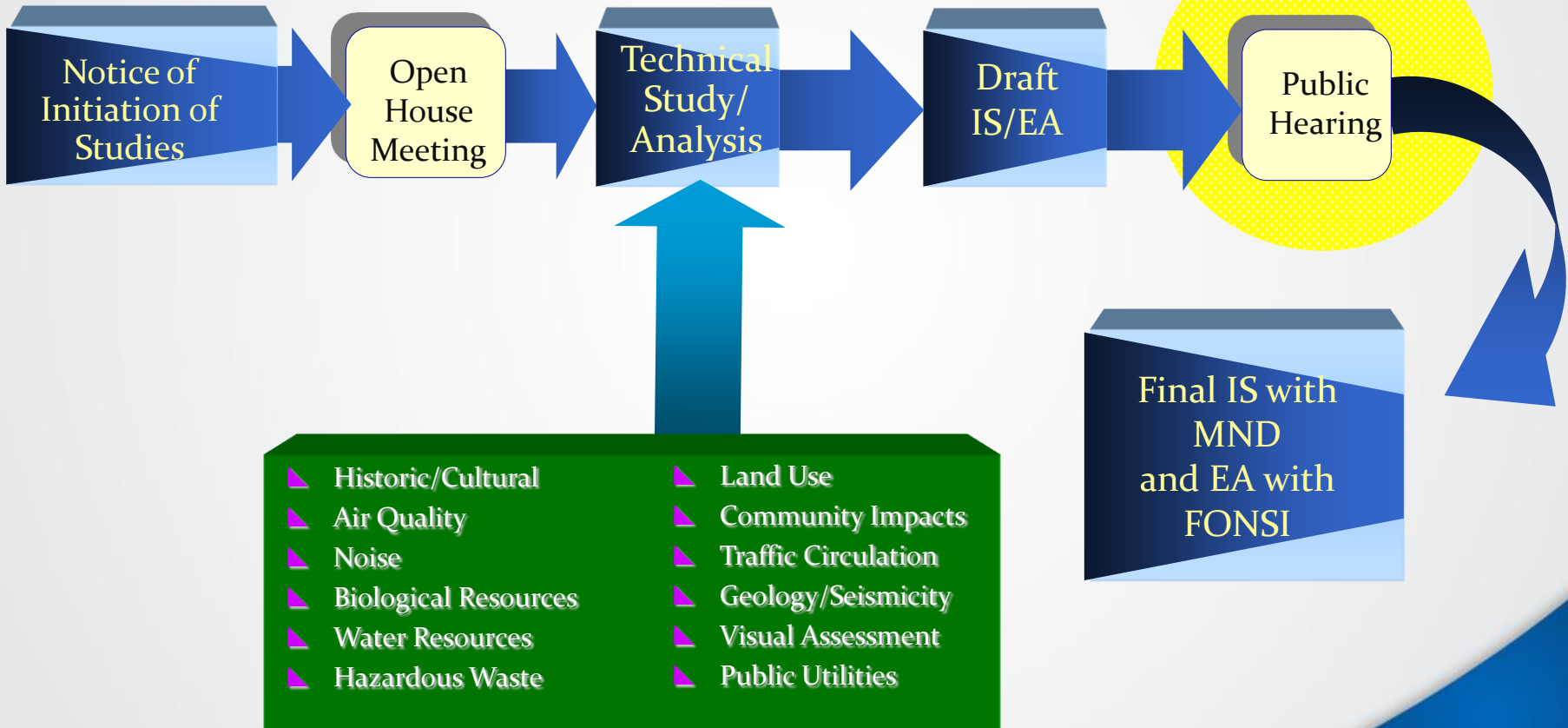
- This is a public hearing for the Draft Environmental Document (Draft IS/EA)
- Written comments on Draft IS/EA accepted via comment card
- Oral comments on Draft IS/EA limited to 3 minutes each (please fill in the speaker card)
- All public comments will be considered and included in the Final IS/EA



Environmental Review Process

We Are Here

Jan 7, 2009



- Historic/Cultural
- Air Quality
- Noise
- Biological Resources
- Water Resources
- Hazardous Waste
- Land Use
- Community Impacts
- Traffic Circulation
- Geology/Seismicity
- Visual Assessment
- Public Utilities



Project Information

Steve Leathers,
HDR Engineering





Project Purpose

- Direct Port traffic away from the Wilmington community
- Reduce queuing of trucks on Figueroa Street
- Eliminate cut through traffic on C Street
- Improve safety for all roadway users
- Reduce existing and anticipated future traffic congestion

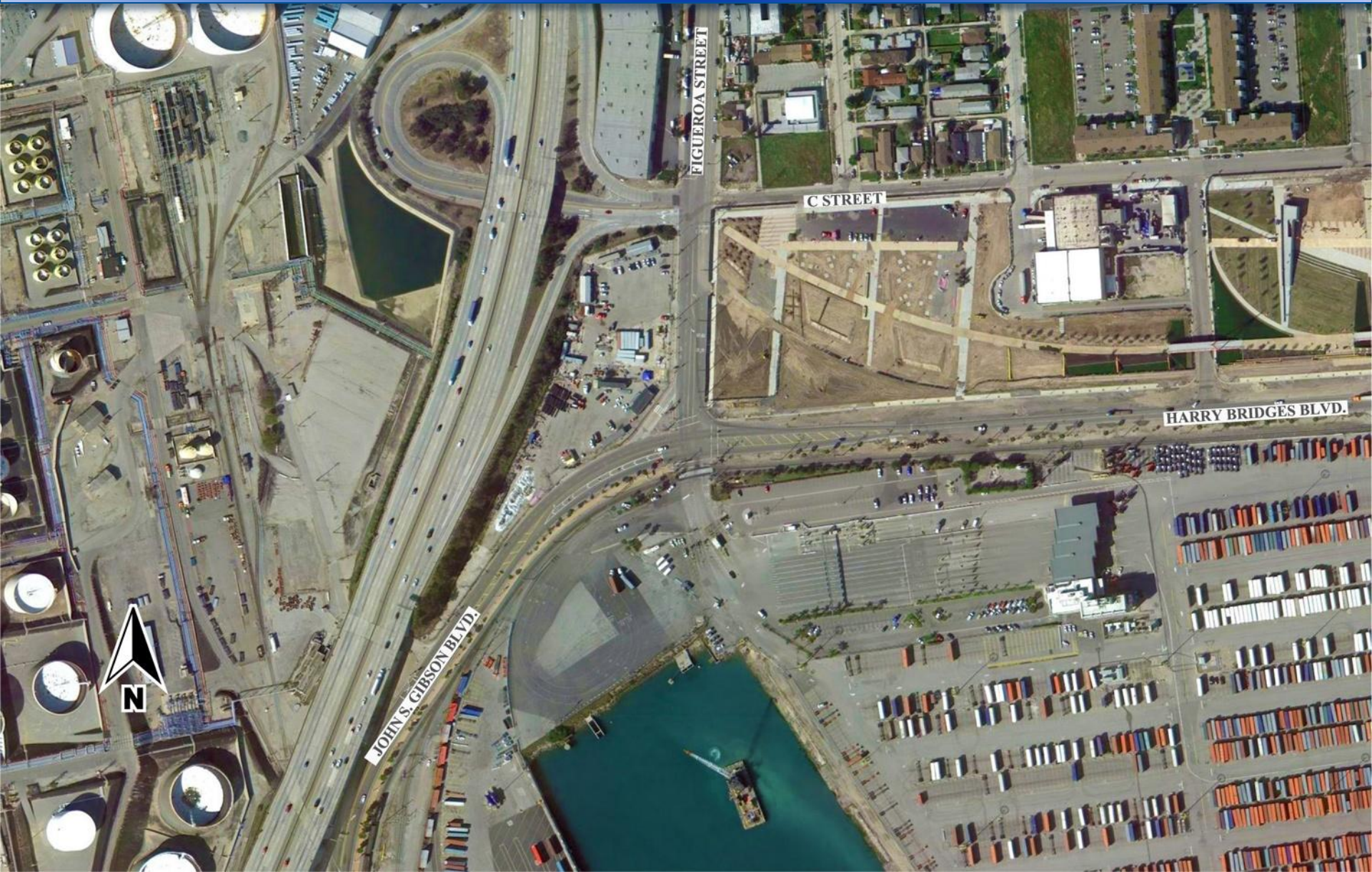
Project Vicinity

**I-110/C Street
Interchange Project**

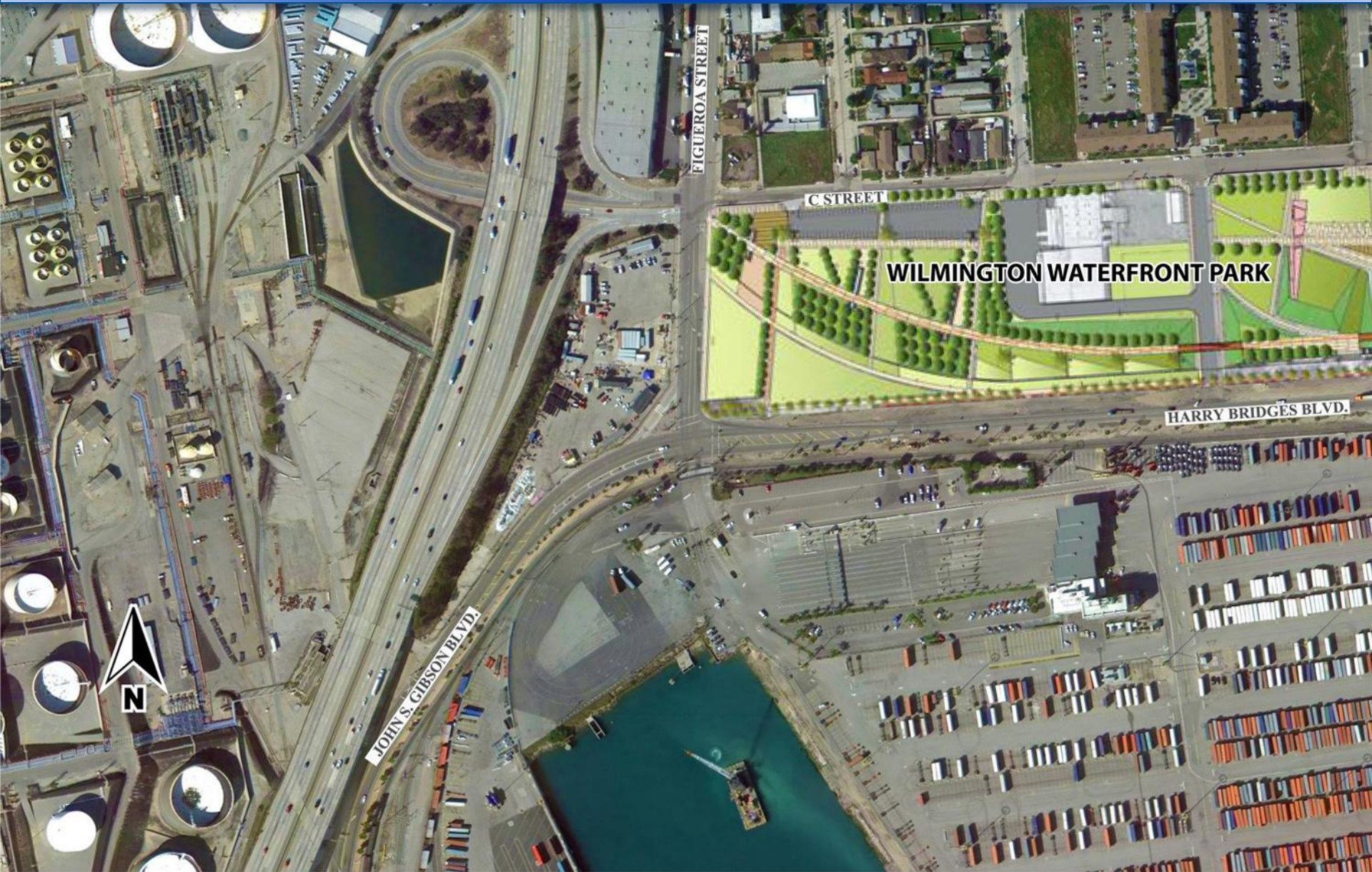
**John S. Gibson Project
Related Project
Hearing was August 18, 2011**



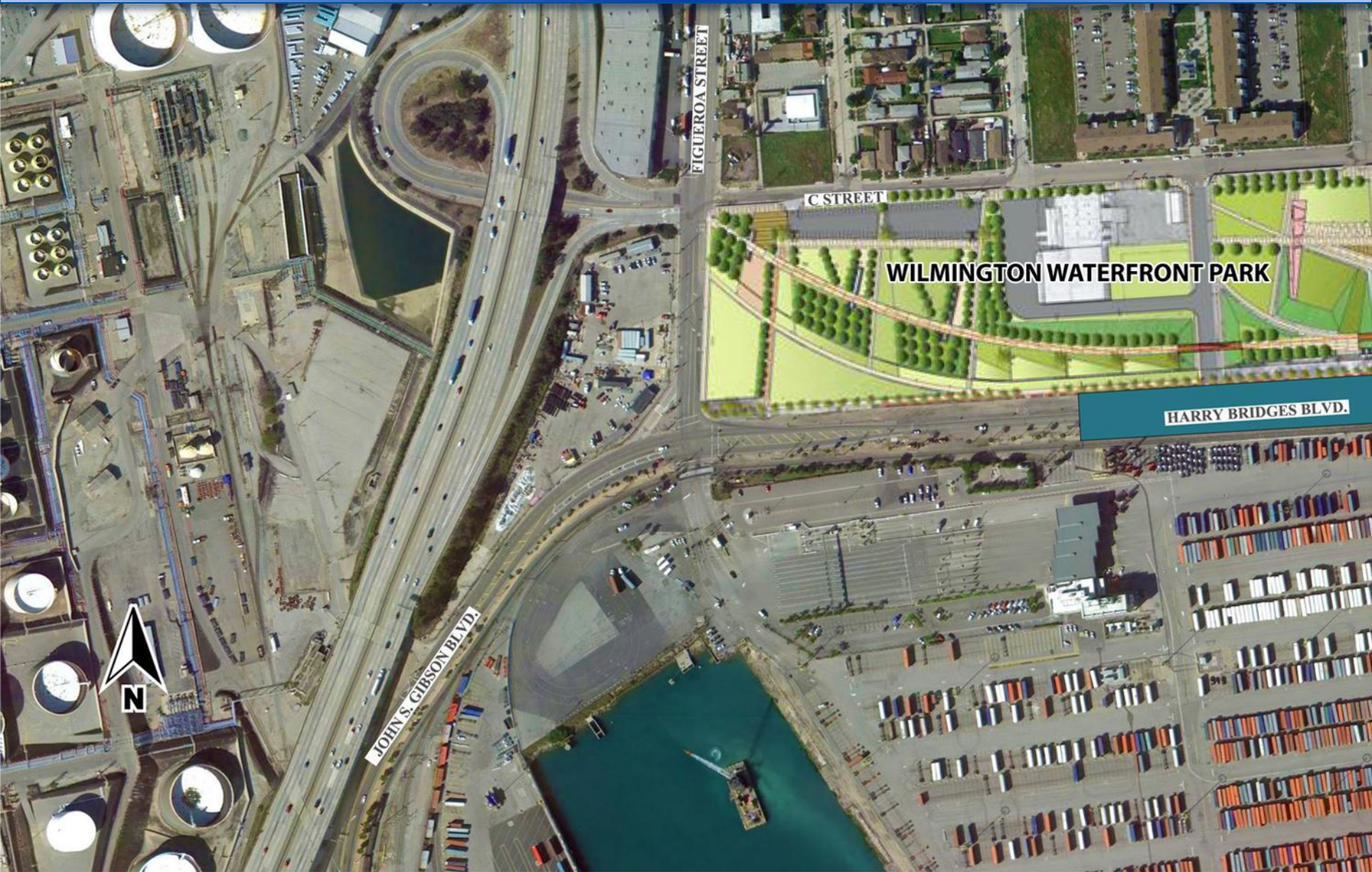
Integration With Other Projects



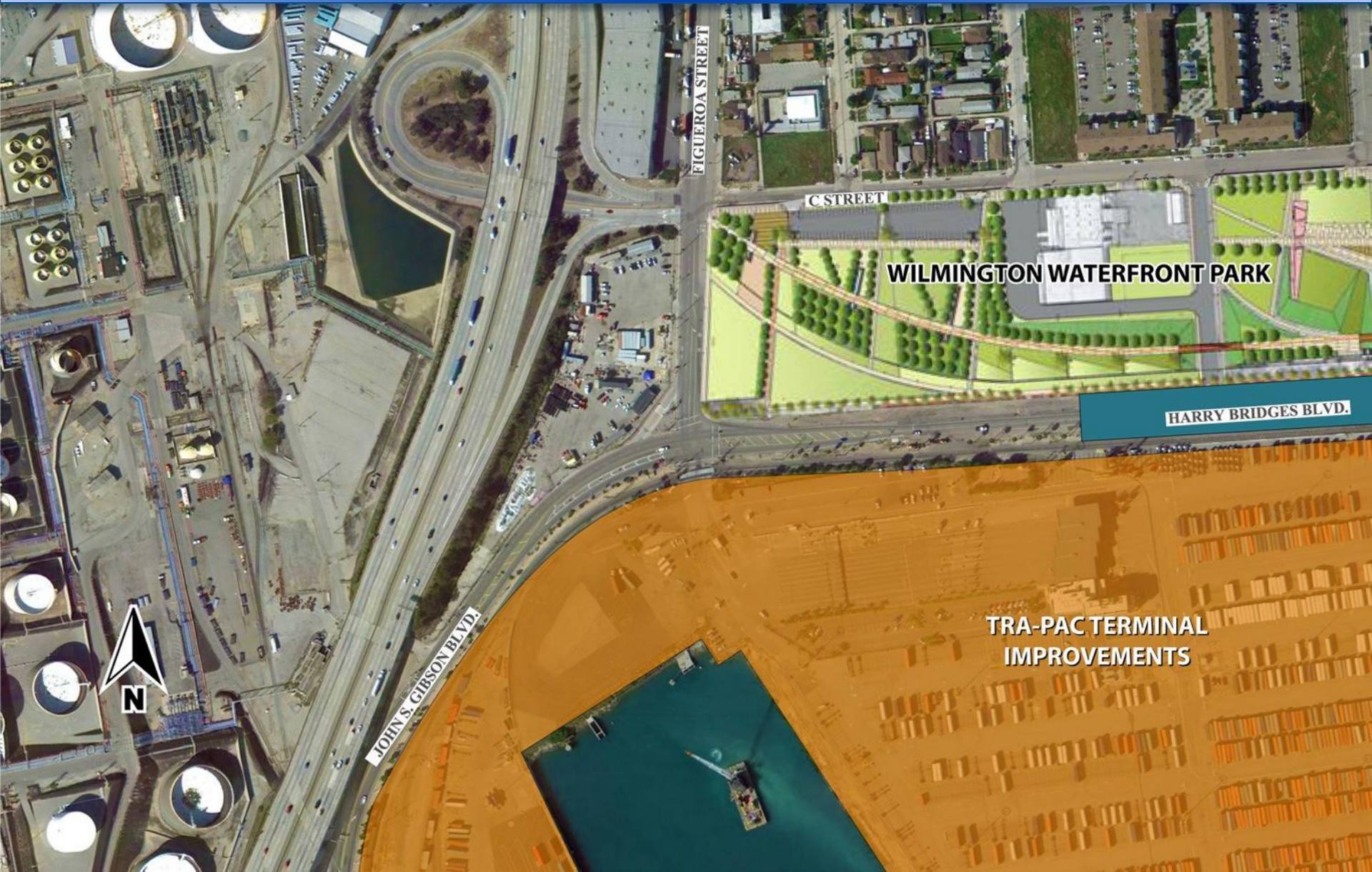
Integration With Other Projects



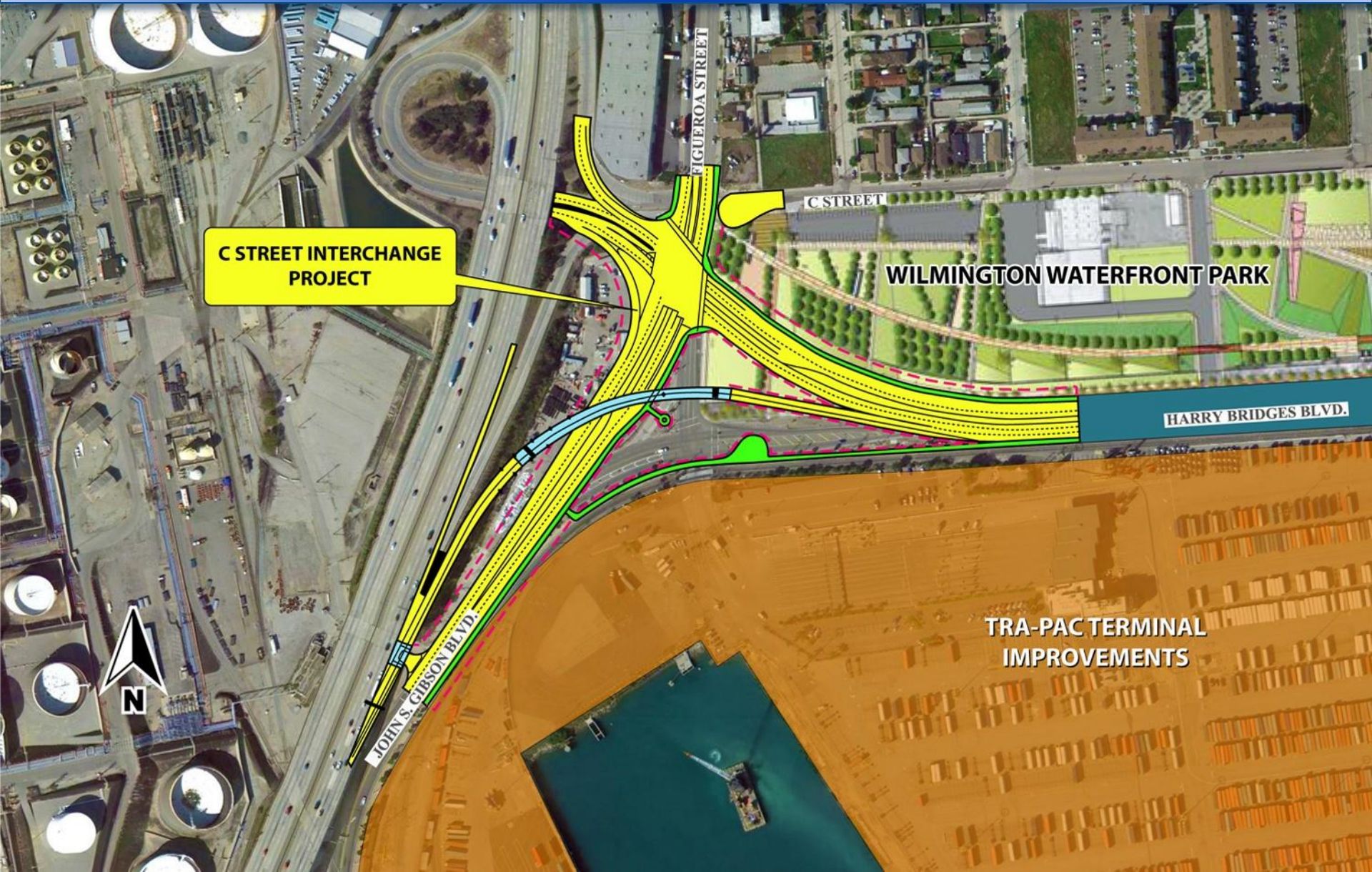
Integration With Other Projects



Integration With Other Projects



Integration With Other Projects



Project Features



Combine
John S Gibson Blvd/
Harry Bridges Blvd
and C Street/Figueroa St.
intersection

Cul de Sac
at C Street

Realign Harry
Bridges Blvd

Northbound
Off-ramp
Structure

W Harry Bridges Blvd

John S Gibson Blvd

Figueroa Street



Proposed Project



John S Gibson Blvd

Figueroa Street

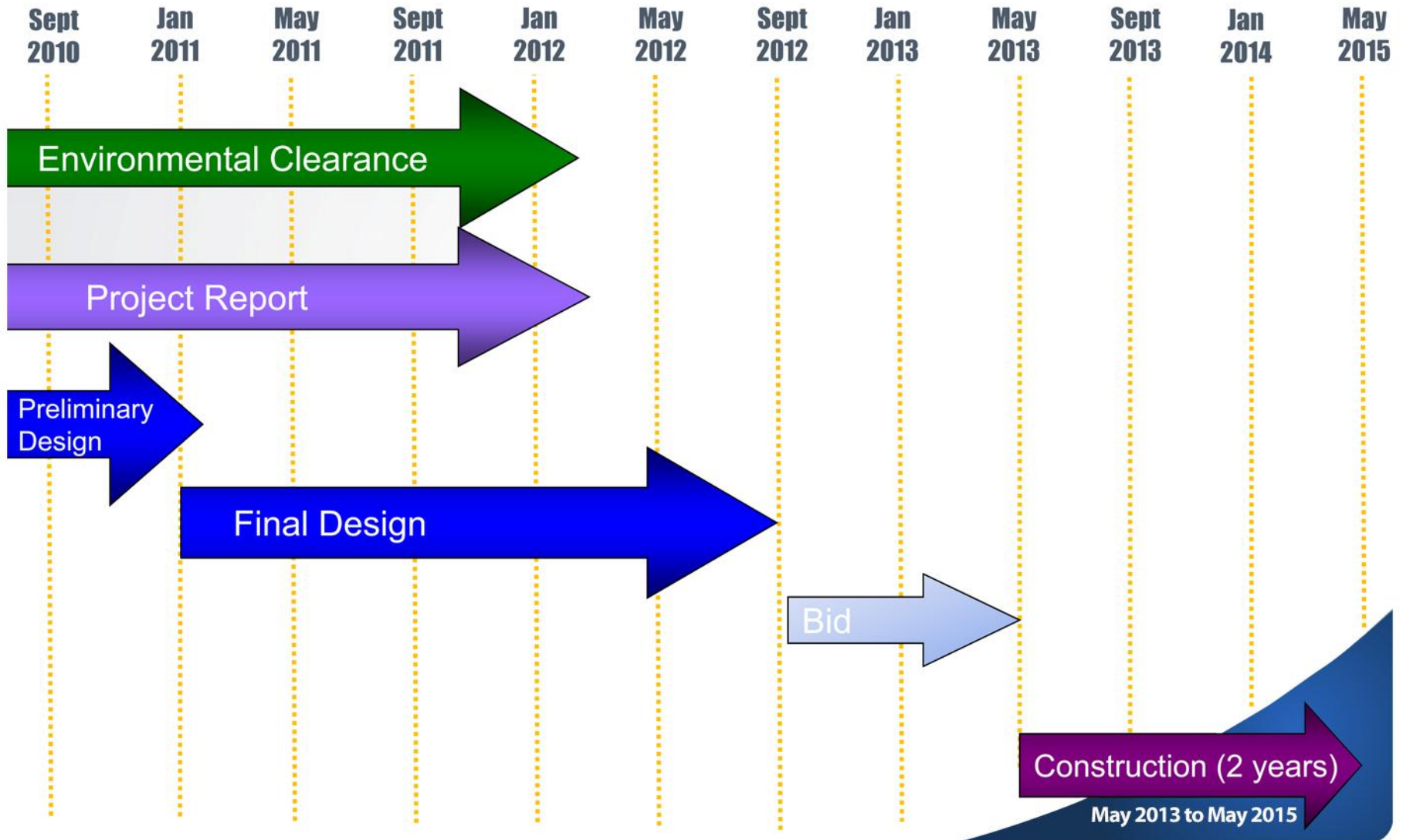
C Street

Harry Bridges Blvd





I-110/C STREET INTERCHANGE PROJECT



PROJECT SCHEDULE



Environmental Analysis Findings

Shilpa Trisal,
ICF International





Temporary Impacts During Construction

- Temporary impacts on traffic, air, water quality, noise & utilities
- Potential for discovery of unknown archaeological or paleontological resources from site excavation
- Disturbance of hazardous materials during demolition and excavation



Temporary Impacts During Construction

- Site clearing and ground disturbance could affect nesting birds
- Invasive plant species may be spread in and out of construction area



Mitigation Measures During Construction

- Develop and implement Traffic Management Plan
- Implement Caltrans noise control measures
- Implement POLA Sustainable Construction Guidelines for Reducing Air Emissions
- Continue public outreach to keep area businesses and residents informed of construction activities and progress



Mitigation Measures During Construction

- Develop and implement paleontology mitigation plan
- Implement hazardous materials management plan during construction
- Clean construction equipment to prevent spreading of invasive plant species
- Implement surveys for nesting birds
- Landscape and revegetate disturbed areas to the greatest extent feasible



Long-Term Impacts

- Minor impact to aesthetics from new I-110 to Harry Bridges Boulevard Undercrossing



Mitigation Measures for Long-Term Impacts

- Develop context-sensitive solutions for landscape treatments based on Caltrans aesthetics and landscape guidance



Availability of Document

Laura Masterson,
Port of Los Angeles





Availability of Draft IS/EA

- **Local Libraries**
 - San Pedro City Library
 - Wilmington City Library
- **Websites**
 - Port Website at <http://www.portoflosangeles.org/>
 - Caltrans website at <http://www.dot.ca.dist07/resources/envdocs/>
- **POLA /Caltrans Offices**
 - POLA - Engineering Division (425 S. Palos Verdes St., San Pedro)
 - Caltrans District 7 (100 S. Main St., Los Angeles)





Your Role

- Review Draft IS/EA
- Express your comments verbally or in writing today
- Send in your comments by November 14, 2011

Christopher Cannon, Director
Environmental Management Division
Port of Los Angeles
425 S. Palos Verdes St.
San Pedro, CA 90731
Email: ceqacomments@portla.org





10-Minute Break Display Boards Viewing





Public Comments

Laura Masterson,
Port of Los Angeles





Public Comments

Comment cards and speaker cards are available at the front table.

Oral comments are limited to 3 minutes per person.



Thank You!





Availability of Draft IS/EA

- **Local Libraries**
 - San Pedro City Library
 - Wilmington City Library
- **Websites**
 - Port Website at <http://www.portoflosangeles.org/>
 - Caltrans website at <http://www.dot.ca.dist07/resources/envdocs/>
- **POLA /Caltrans Offices**
 - POLA - Engineering Division (425 S. Palos Verdes St., San Pedro)
 - Caltrans District 7 (100 S. Main St., Los Angeles)

