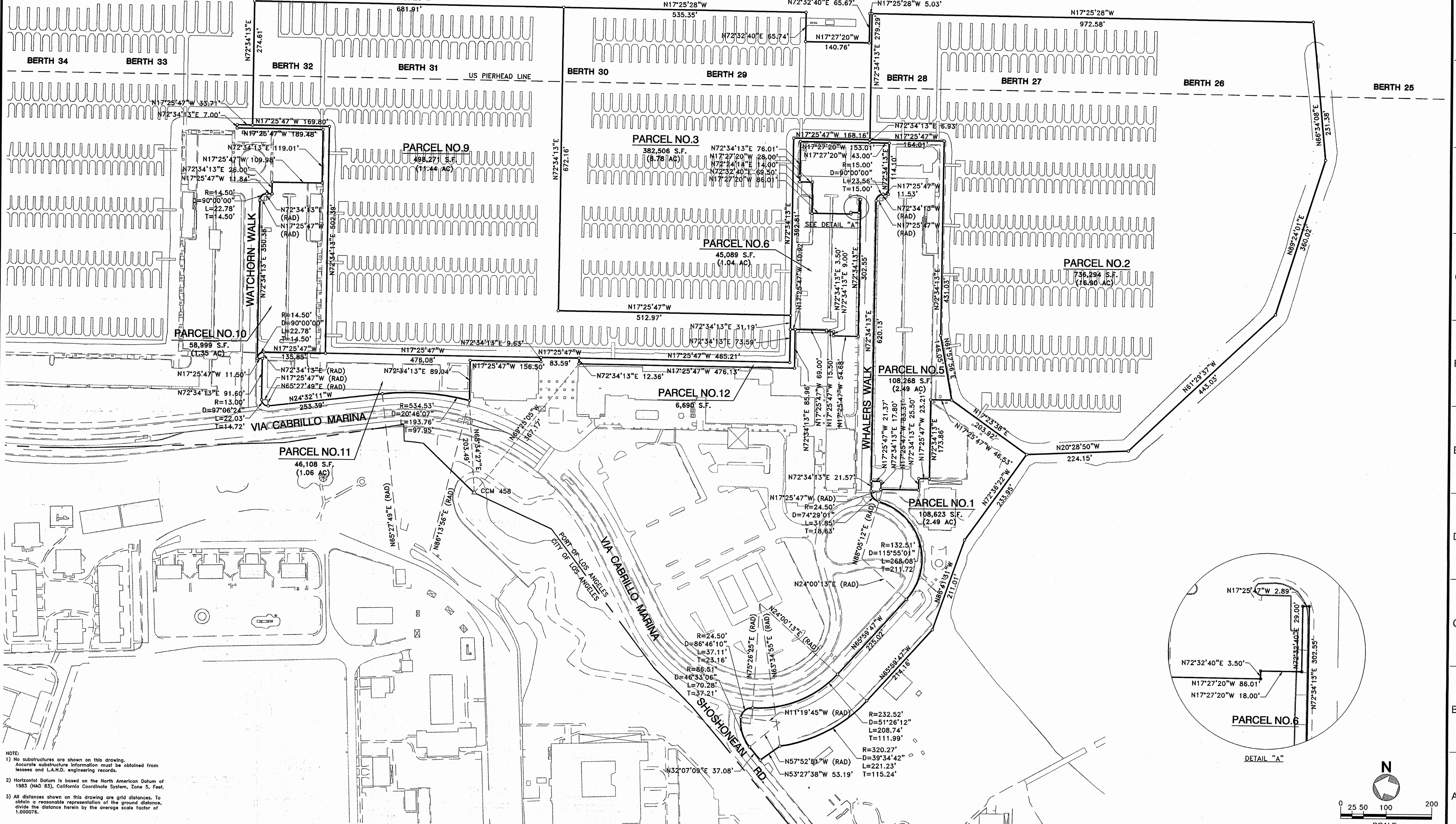


WEST CHANNEL



NOTE:
 1) No substructures are shown on this drawing. Accurate substructure information must be obtained from leases and L.A.H.D. engineering records.
 2) Horizontal Datum is based on the North American Datum of 1983 (NAD 83), California Coordinate System, Zone 5, Feet.
 3) All distances shown on this drawing are grid distances. To obtain a reasonable representation of the ground distances, divide the distance herein by the average scale factor of 1.000078.

NO.	DATE	DRAWN	REVISIONS	APP'D	NO.	DATE	DRAWN	REVISIONS	APP'D	SCALE:	1"=100'	CHIEF OF DESIGN	PERMIT MAP - AUTHORITY NO. CA791	CALIFORNIA YACHT MARINA-CABRILLO LLC	THE PORT OF LOS ANGELES	DRAWING NUMBER
1					2											1-2195-1
3					4											
5					6											
8					9											
10					11											
12					13											
14					15											