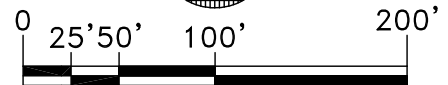


NOTE:

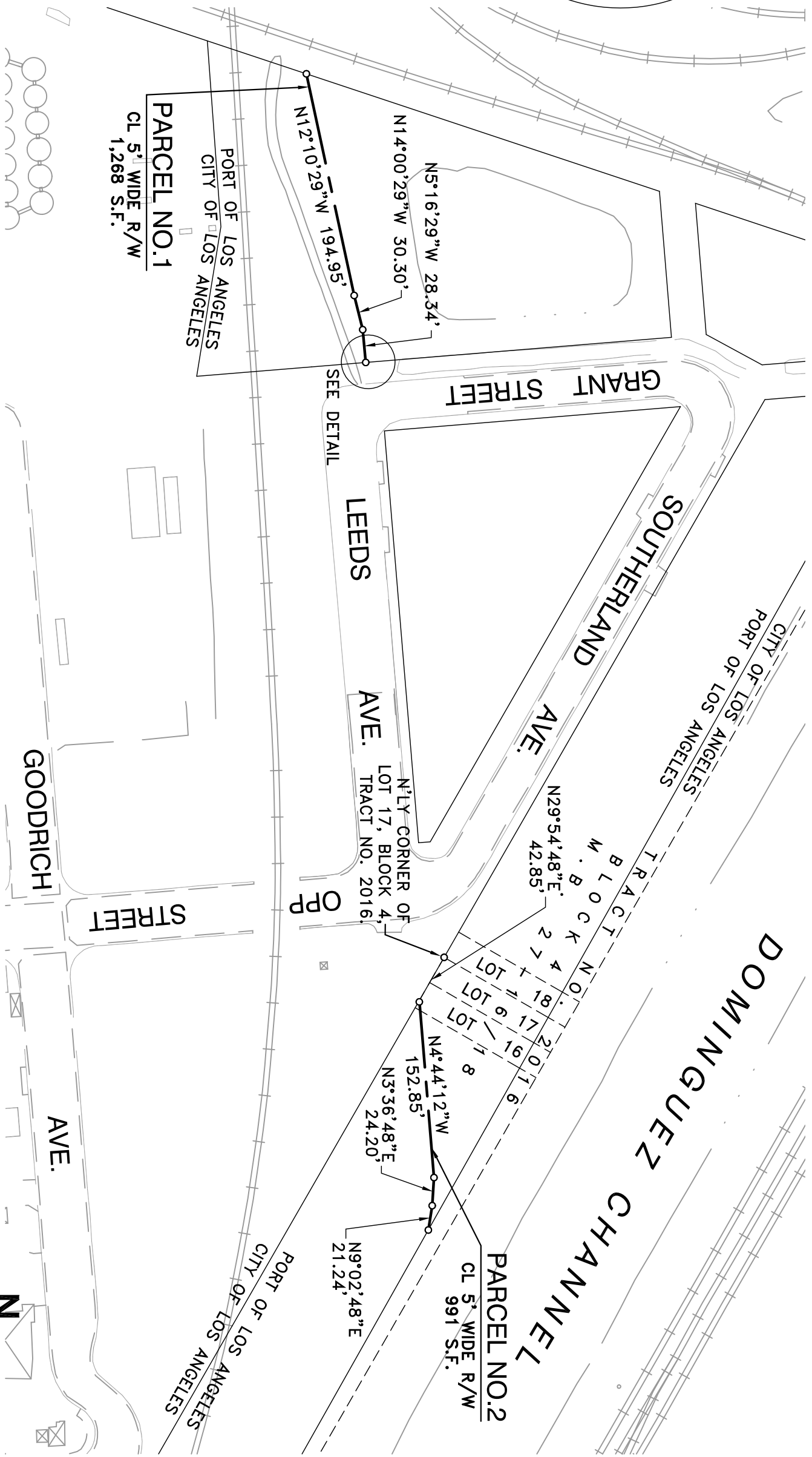
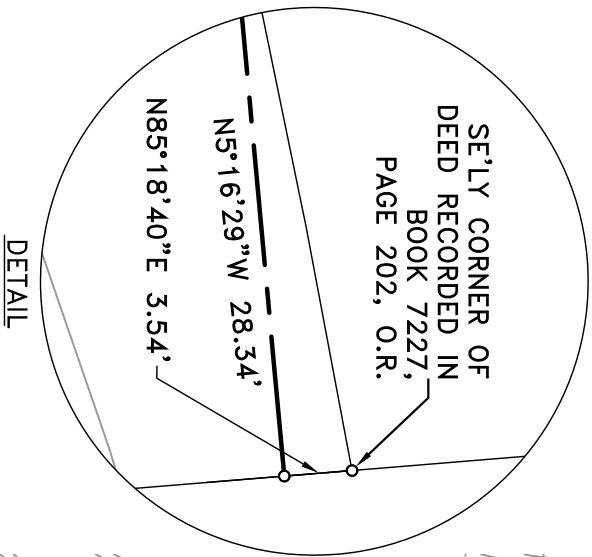
- 1) No substructures are shown on this drawing. Accurate substructure information must be obtained from lessees and L.A.H.D. engineering records.
- 2) Horizontal Datum is based on the North American Datum of 1983 (NAD 83), California Coordinate System, Zone 5, Feet.
- 3) All distances shown on this drawing are grid distances. To obtain a reasonable representation of the ground distance, divide the distance herein by the average scale factor of 1.000076.



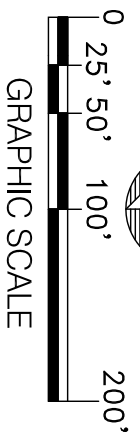
GRAPHIC SCALE

DWG: N:\cadd\project\RO.M\LEASE\Signed Drawings\5-4864-2.dwg USER: HAYASHIR
 DATE: Jul 12, 2018 1:41pm XREFS: 45 146 BDRY-CITY BDRY-POLA BDRY-PIER IMAGES:
 POLAPRO5_VER.1_12/96

SCALE: AS-SHOWN	DATE:	RECOMMENDED FOR APPROVAL	PERMIT MAP - AUTHORITY NO. P934	
DRAWN: DRR	06/18	CHIEF OF DESIGN	CARDINAL PIPELINE LP	
CHECKED: PH	06/18	<i>muir Raach</i>	THE PORT OF LOS ANGELES ENGINEERING DIVISION 425 S. PALOS VERDES STREET SAN PEDRO CA 90731-3309	
DESIGNED: D. RAASCH		ASSISTANT CHIEF HARBOR ENGINEER <i>Stuart L. Frick</i>		
ENGR/ARCH		APPROVED	7-02-18	DRAWING NUMBER
<i>Daryl R. Raasch</i>		<i>Debra M. Wald</i>	CHIEF HARBOR ENGINEER	5-4864-2



- NOTE:
- 1) No substructures are shown on this drawing. Accurate substructure information must be obtained from lessees and L.A.H.D. engineering records.
 - 2) Horizontal Datum is based on the North American Datum of 1983 (NAD 83), California Coordinate System, Zone 5, Feet.
 - 3) All distances shown on this drawing are grid distances. To obtain a reasonable representation of the ground distance, divide the distance herein by the average scale factor of 1.000076.



NO.	DATE	DRAWN	REVISIONS	CHK'D	APP'D	SCALE:	1" = 100'	RECOMMENDED FOR APPROVAL	APPROVED	PERMIT MAP - AUTHORITY NO. P934	CARDINAL PIPELINE LP	DRAWING NUMBER
						1" = 100'		CHIEF OF DESIGN <i>Marc Roubel</i>	APPROVED <i>William Wulfsberg</i>			45241-2
								ASSISTANT CHIEF HARBOR ENGINEER <i>Stewart L. Truick</i>	CHIEF HARBOR ENGINEER			
								DESIGNED: D. RAASCH ENGR/ARCH				
								CHECKED: PH 6/18				
								DRAWN: DRR 6/18				
								<i>David R. Raasch</i> ENGR/ARCH				

PARCEL NO.1
CL 5' WIDE R/W
1,268 S.F.

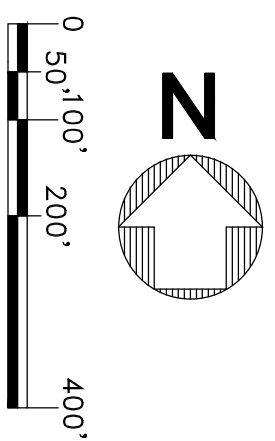
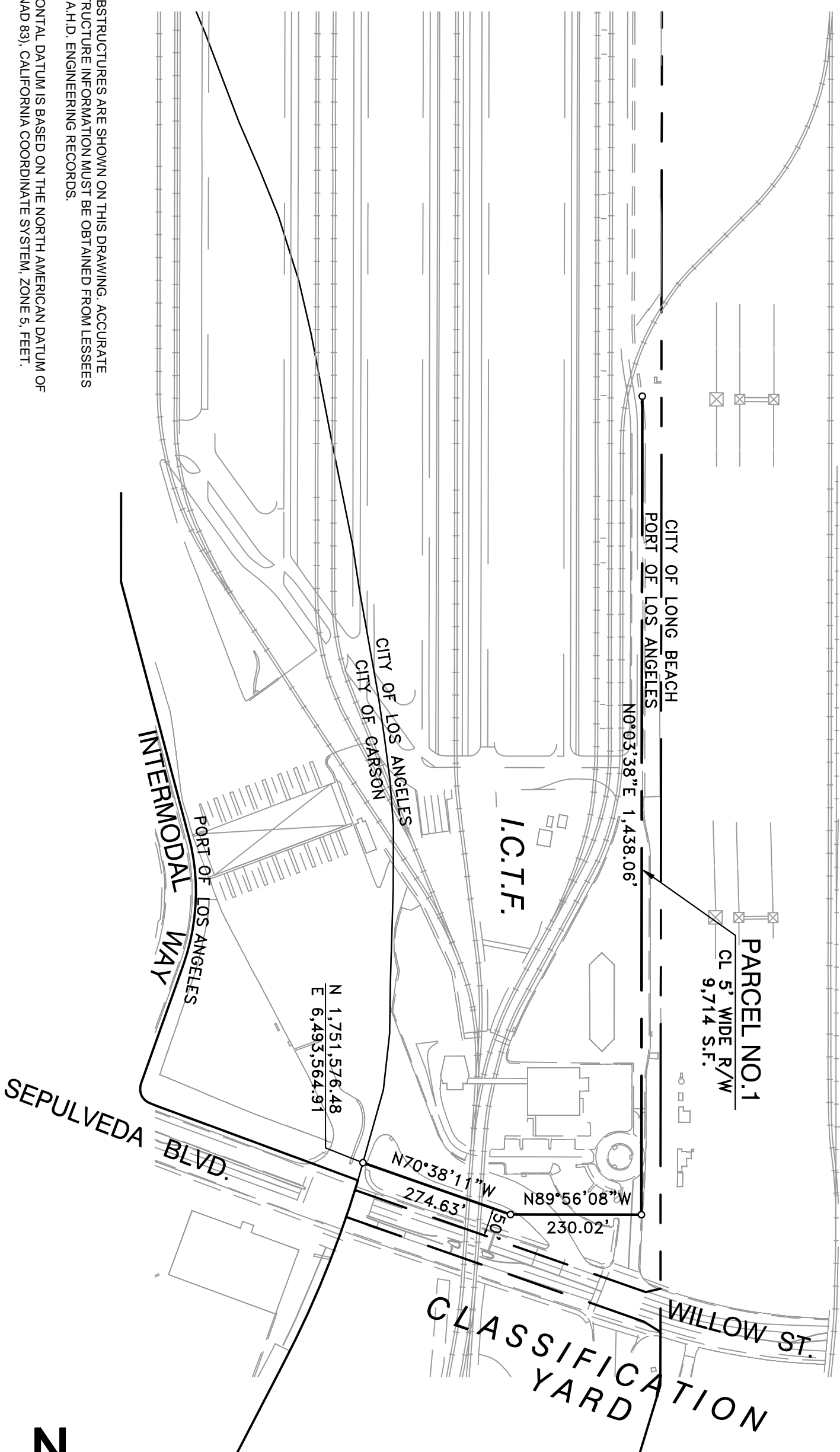
PARCEL NO.2
CL 5' WIDE R/W
991 S.F.

PERMIT MAP - AUTHORITY NO. P934
CARDINAL PIPELINE LP



DRAWING NUMBER
45241-2

- NOTES:
- 1) NO SUBSTRUCTURES ARE SHOWN ON THIS DRAWING. ACCURATE SUBSTRUCTURE INFORMATION MUST BE OBTAINED FROM LESSEES AND L.A.H.D. ENGINEERING RECORDS.
 - 2) HORIZONTAL DATUM IS BASED ON THE NORTH AMERICAN DATUM OF 1983 (NAD 83), CALIFORNIA COORDINATE SYSTEM, ZONE 5, FEET.
 - 3) ALL DISTANCES SHOWN ON THIS DRAWING ARE GRID DISTANCES. TO OBTAIN A REASONABLE REPRESENTATION OF THE GROUND DISTANCE, DIVIDE THE DISTANCE HEREIN BY THE AVERAGE SCALE FACTOR OF 1.000076.



NO.	DATE	DRAWN	REVISIONS	CHK'D	APP'D	NO.	DATE	DRAWN	REVISIONS	CHK'D	APP'D
1						2					
3						4					
5						6					
7						8					
9						10					
11						12					
13						14					

SCALE: 1"=200'	CHIEF OF DESIGN
DRAWN: RH	<i>Paula Cook</i>
CHECKED: D. HOANG	ASSISTANT CHIEF HARBOR ENGINEER
DESIGNED: D. BAASCH	<i>Shawn Frank</i>
ENGINEER/ARCHITECT	CHIEF HARBOR ENGINEER
<i>Raymond R. Rowland</i>	

PERMIT MAP - AUTHORITY NO. P934	
CARDINAL PIPELINE LP	
THE PORT OF LOS ANGELES ENGINEERING DIVISION 423 S. PALMS TRENDERS STREET SAN PEDRO CA 90731-3009	
DRAWING NUMBER	45688
SHEET NUMBER	