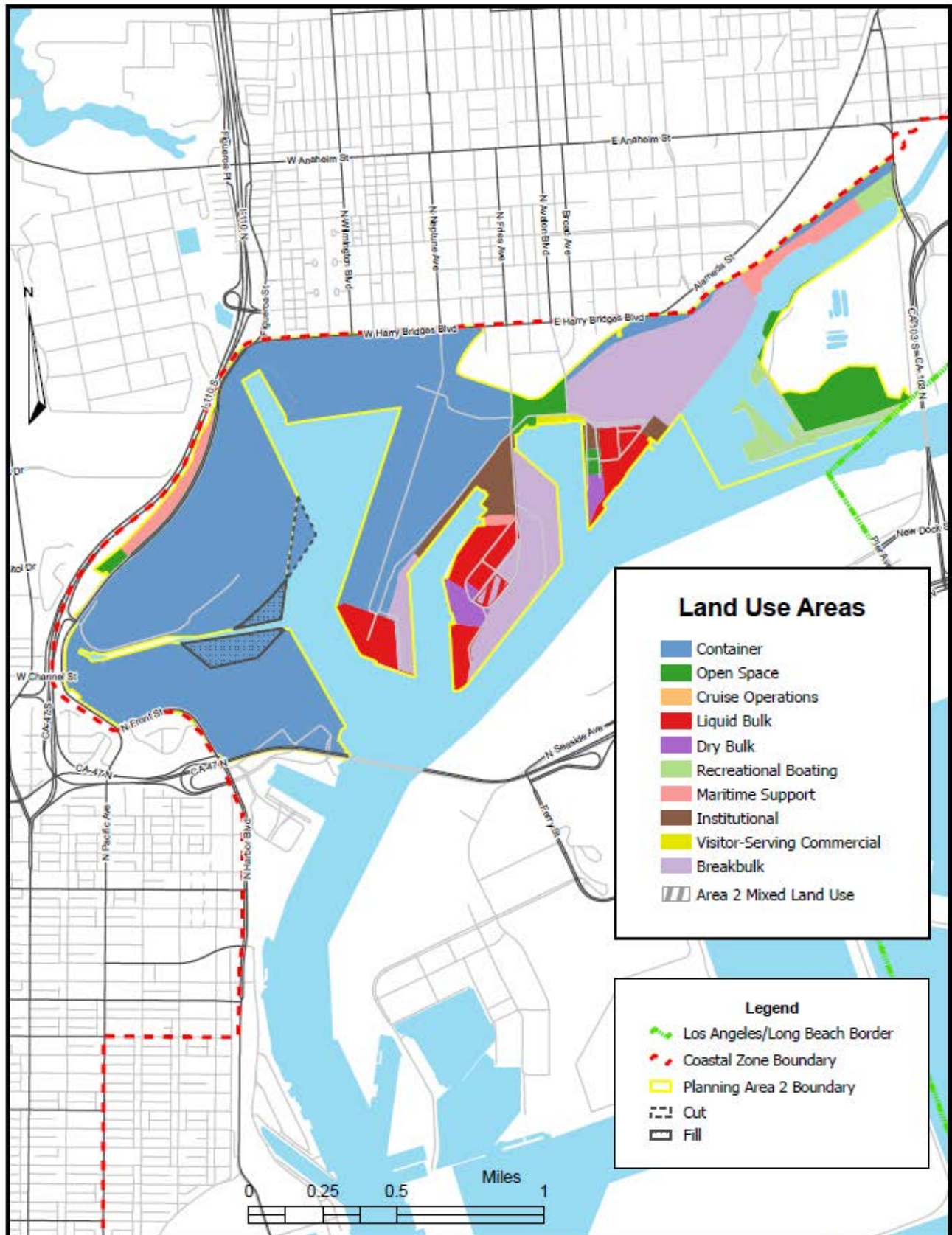


Figure 6. Planning Area 2



5.4 Planning Area 2 – West Basin/Wilmington

5.4.1 General Overview

Planning Area 2 encompasses the West Basin and Wilmington areas, and includes Berths 96-204. The West Basin consists of container terminals, while the remaining Wilmington areas consist of a variety of uses ranging from liquid bulk at Berths 148-150, and liquid and dry bulk uses on Mormon Island, to recreational boating and open space along Anchorage Road. The Wilmington Waterfront land uses provide public access to the waterfront at Berths 183-186. Future projects will continue to accommodate recreational and visitor-serving commercial opportunities near Banning’s Landing and along the Avalon Corridor. Additional recreational and open space opportunities near the Wilmington marinas will become available with the redevelopment of the former Anchorage Road Soil Storage Site.

5.4.2 Planning Framework

The planning framework for Planning Area 2 is based on the Wilmington Waterfront Plan, Berths 97-109 (China Shipping) Container Terminal Project, Berths 136-147 (TraPac) Container Terminal Project, and the Wilmington Marinas Planning Study. The Wilmington Waterfront Plan was approved by the Board in June 2009, and provides public access to Slip 5 near Banning’s Landing. The Wilmington Marinas Planning Study details future open space areas and continued recreational boating opportunities near the East Basin and an Anchorage Road Soil Storage Site Concept Plan. Table 10 below summarizes total acreage for each land use category for Planning Area 2.

Table 10. Planning Area 2 Acreages

| Land Use Type ⁽¹⁾ | Acres |
|---|--------------|
| Container | 682 |
| Liquid Bulk | 67 |
| Dry Bulk | 15 |
| Commercial Fishing | |
| Recreational Boating | 29 |
| Maritime Support | 33 17 |
| Institutional | 30 |
| Visitor-Serving Commercial | 3 |
| Breakbulk | 175 |
| Open Space | 60 76 |
| Cruise Operations | |
| Mixed Land Use: [B173] Liquid Bulk/Breakbulk ⁽²⁾ | 4 |
| SUM ⁽³⁾ | 1,098 |

(1) Area calculated for individual land use types within each Planning Area.

(2) Mixed (Potential Acreage) land use for selected properties.

(3) Summed differences are due to rounding to whole integers.