




2/13/24 - Miscellaneous Concrete and Asphalt Debris Removal at Berth 178, Bents 20-23. Sizes vary from 1.5'x2'x6" to 8'x3'x3'



2/14/24 - Miscellaneous Debris Removal at Berth 178, Bents 21-23. Misc. 6" pipe, Concrete and Asphalt sizes vary from 1.5'x1.5'x6" to 3'x10'x8"


SCALE AS SHOWN	RECOMMENDED FOR APPROVAL	Berths 177-182 Marine Improvements Project	
DRAWN:	CHIEF OF DESIGN	DEBRIS PHOTOS	
CHECKED:			
DESIGNED:			
ENGR/ARCH	ASSISTANT HARBOR CHIEF ENGINEER	APPROVED	 PORT OF LOS ANGELES CONSTRUCTION DIVISION P.O. BOX 151 SAN PEDRO, CA 90733-0151
		CHIEF HARBOR ENGINEER	
			Spec No. 2799

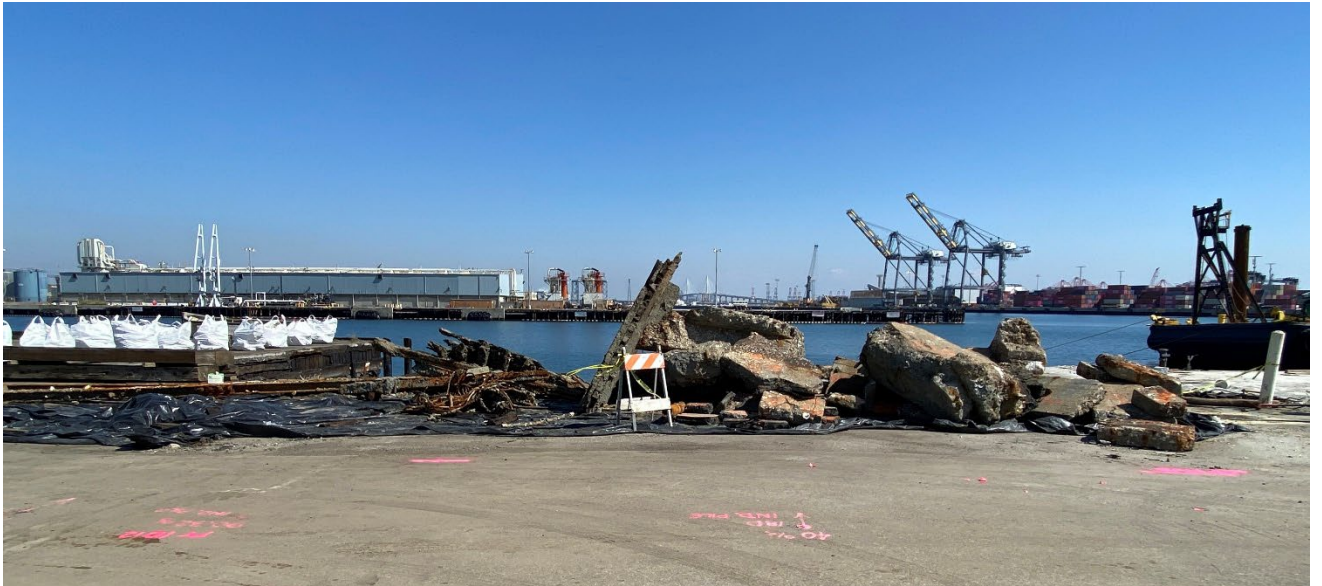


2/21/24 - Fallen Timber/Asphalt Deck Panel at Berth 178, Bents 17-18. Size is 12'x12'x9"

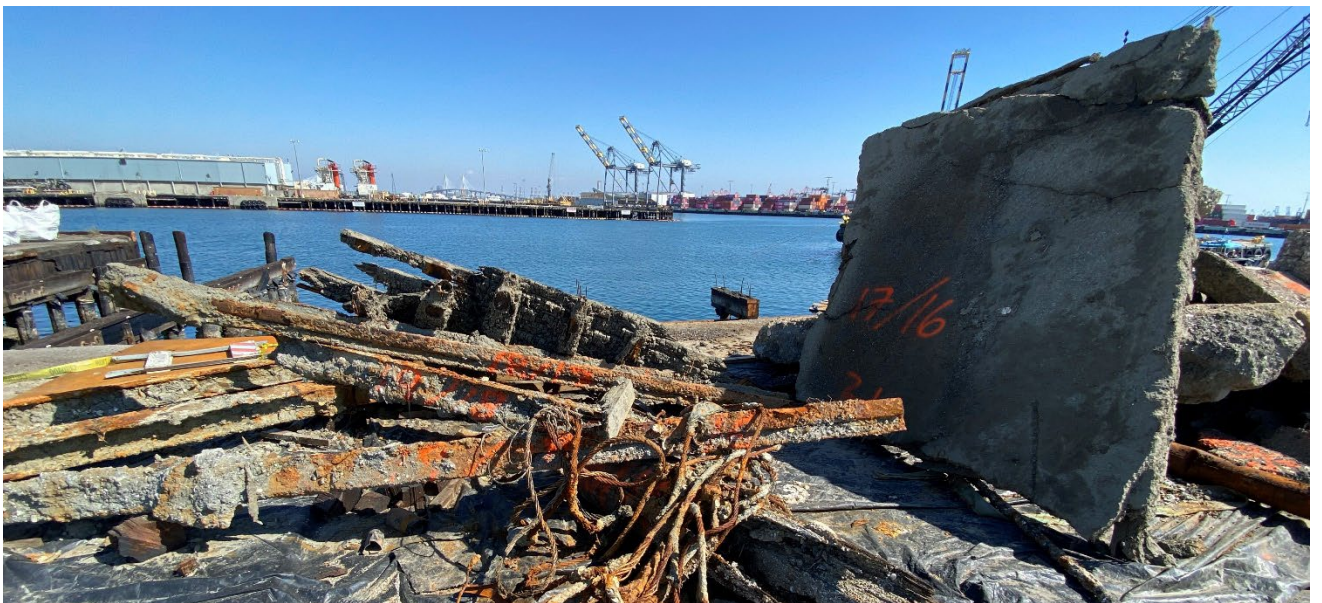


2/26/24 - Total Concrete & AC Debris Removal at Berth 178, Bents 19-23


SCALE AS SHOWN	RECOMMENDED FOR APPROVAL	Berths 177-182 Marine Improvements Project	
DRAWN:	CHIEF OF DESIGN	DEBRIS PHOTOS	
CHECKED:			
DESIGNED:			
ENGR/ARCH	ASSISTANT HARBOR CHIEF ENGINEER	APPROVED	 PORT OF LOS ANGELES CONSTRUCTION DIVISION P.O. BOX 151 SAN PEDRO, CA 90733-0151
		CHIEF HARBOR ENGINEER	Spec No. 2799



**Miscellaneous Debris Removed from Berth 178,
Bents 1-23.**



**Miscellaneous Metals Removed from Berth 178, Bents
1-23.**

SCALE AS SHOWN	RECOMMENDED FOR APPROVAL	Berths 177-182 Marine Improvements Project	
DRAWN:	CHIEF OF DESIGN		
CHECKED:		DEBRIS PHOTOS	
DESIGNED:			
ENGR/ARCH	ASSISTANT HARBOR CHIEF ENGINEER	APPROVED	 PORT OF LOS ANGELES CONSTRUCTION DIVISION P.O. BOX 151 SAN PEDRO, CA 90733-0151
		CHIEF HARBOR ENGINEER	